

Electronic - PC Board and Small Dimension Fuses & Accessories



Section Contents

| | Page |
|---|-------------|
| 5 x 15mm ferrule fuses | 86 |
| 5 x 20mm European (IEC) ferrule fuses | 87-88 |
| 5 x 20mm North American (UL) ferrule fuses | 89 |
| 1/4" Dia. x 5/8" to 1" length ferrule fuses | 90 |
| 1/4" Dia. x 1 1/4" length fast-acting ferrule fuses | 91 |
| 1/4" Dia. x 1 1/4" length time-delay ferrule fuses | 92 |
| PCB mount fuse holders | 93-94 |
| PCB fuseclips for 5mm dia. fuses | 95 |
| PCB fuseclips for 1/4" dia. fuses | 96-97 |
| PCB fuseclips for 1/4", 5/32", 13/32" & 1/2" fuses | 98 |



Scan this tag to get the
latest product information for
Electronic Fuses and Accessories.

5 x 15mm Ferrule Fuses

C515 (axial leads)

C519

Specifications
Description:
Time-delay fuse.

Dimensions:
5 x 15mm
(0.197" X 0.591").

Construction:
Glass tube.

Ratings:

- Volts — 125Vac (3.5-7A)
- 250Vac (125mA-3A)
- 32Vdc (Self Certified)
- Amps — 125mA-7A
- IR — 25A (350mA @ 600Vac)
- 35A (125mA-1A @ 250Vac)
- 100A (1.25-3A @ 250Vac)
- 400A (3.5-7A @ 125Vac)
- 10kA (125mA-3A @ 125Vac)

Agency Information: CE, UL Listed File E19180, Guide JDYX 125mA-250mA and 375mA-3A, UL Recognized, File E19180, Guide JDYX2, 350mA and 3.5A-7A, CSA Certification File 53787, Class 1422-01, 125mA-250mA and 375mA-3A.

Features and Benefits

- Time-delay for closer sizing on inductive circuits.

Typical Application

- Electronic Circuits
- Printed Circuit Boards

Catalog Numbers (Amps)

With Axial Leads

| | | |
|------------|-------------|------------|
| C515-125-R | C515-800-R | C515-2.5-R |
| C515-250-R | C515-1-R | C515-3-R |
| C515-350-R | C515-1.25-R | C515-3.5-R |
| C515-375-R | C515-1.5-R | C515-4-R |
| C515-500-R | C515-1.6-R | C515-5-R |
| C515-600-R | C515-2-R | C515-6-R |
| C515-750-R | C515-2.25-R | C515-7-R |

Without Axial Leads

| | | |
|------------|-------------|-------------|
| C519-125-R | C519-750-R | C519-2.25-R |
| C519-250-R | C519-1-R | C519-2.5-R |
| C519-350-R | C519-1.25-R | C519-3-R |
| C519-375-R | C519-1.5-R | C519-3.5-R |
| C519-500-R | C519-1.6-R | C519-4-R |
| C519-600-R | C519-2-R | C519-5-R |



C518 (axial leads)

C520

Specifications
Description:
Fast-acting fuse.

Dimensions:
5 x 15mm
(0.197" X 0.591").

Construction:
Glass tube.

Ratings:

- Volts — 250Vac
- 32Vdc (Self Certified)
- Amps — 100mA-5A
- IR — 35A (100mA-750mA @ 250Vac)
- 10kA (100mA-5A @ 125Vac)
- 100A (1.5-3.5A @ 250Vac)
- 200A (4-5A @ 250Vac)

Agency Information: CE, UL Recognized File E19180, Guide JDYX2CSA Certification File 53787, Class 1422-01.

Features and Benefits

- Small footprint saves space in equipment.
- Fast-acting for maximum component protection.
- Available in ferrule and axial leaded configurations

Typical Applications

- Electronic Circuits
- Printed Circuit Boards

Catalog Numbers (Amps)

With Axial Leads

| | | |
|------------|------------|----------|
| C518-100-R | C518-750-R | C518-4-R |
| C518-125-R | C518-2-R | C518-5-R |
| C518-250-R | C518-2.5-R | |
| C518-375-R | C518-3-R | |
| C518-500-R | C518-3.5-R | |

Without Axial Leads

| | | |
|------------|------------|------------|
| C520-100-R | C520-750-R | C520-3.5-R |
| C520-125-R | C520-1.5-R | C520-4-R |
| C520-250-R | C520-2-R | C520-5-R |
| C520-375-R | C520-2.5-R | |
| C520-500-R | C520-3-R | |



C517 (axial leads)

Specifications

Description: Fast-acting fuse.

Construction: Glass tube.

Ratings:

- Volts — 350Vac*
- 32Vdc (Self Certified)
- Amps — 3A
- IR — 100A @ 350Vac
- 100A @ 250Vac
- 10kA @ 125Vac

*350Vac/100A IR is UL Recognized

Agency Information: CE, UL Listing File E19180, Guide JDYX, CSA Certification File 53787, Class 1422-01, UL Recognized, File E19180, Guide JDYX2.

- Small footprint saves space in equipment.
- Fast-acting for maximum component protection.
- 350Vac rating for 277V ballast circuit protection.

Typical Applications

- Electronic Circuits
- Printed Circuit Boards
- Electronic Ballast Protection

Catalog Number (Amps)

With Axial Leads

C517-3-R



5 x 20mm European (IEC) Ferrule Fuses

Electronic Fuses

S500-V (GDB-V)* (axial leads)

S500 (GDB)*

Specifications

Description: Fast-acting, low-breaking capacity fuse.

Construction:

Glass tube, nickel-plated brass endcaps (silver-plated endcaps, 32-125mA).

Ratings:

- Volts — 250Vac (or less)
- 32Vdc (Self Certified)
- Amps — 32mA-10A
- IR — See catalog table



Agency Information: CE, cURus, SEMKO, VDE, BSI, IMQ, CCC. See data sheet for complete agency information. Not all approvals apply to all ratings.

Features and Benefits

- Fast-acting for maximum protection, conforms to IEC 60127-2 (160mA-10A).

Typical Applications

- Electronic Circuits

Catalog Numbers (Amps)

| Catalog Numbers | IR (Amps) | I ² t | Max Voltage Drop (mV) |
|-----------------|-----------|------------------|-----------------------|
| S500-32-R | 35 | 0.000047 | 3200 |
| S500-40-R | 35 | 0.00011 | 2500 |
| S500-50-R | 35 | 0.00020 | 2400 |
| S500-63-R | 35 | 0.00057 | 2000 |
| S500-80-R | 35 | 0.0012 | 1200 |
| S500-100-R | 35 | 0.003 | 1100 |
| S500-125-R | 35 | 0.005 | 1000 |
| S500-160-R | 35 | 0.008 | 2000 |
| S500-200-R | 35 | 0.016 | 1700 |
| S500-250-R | 35 | 0.028 | 1400 |
| S500-315-R | 35 | 0.058 | 1300 |
| S500-400-R | 35 | 0.018 | 1100 |
| S500-500-R | 35 | 0.018 | 220 |
| S500-630-R | 35 | 0.035 | 220 |
| S500-800-R | 35 | 0.067 | 190 |
| S500-1-R | 35 | 0.60 | 200 |
| S500-1.25-R | 35 | 0.84 | 200 |
| S500-1.6-R | 35 | 1.6 | 190 |
| S500-2-R | 35 | 4.2 | 150 |
| S500-2.5-R | 35 | 6.1 | 150 |
| S500-3.15-R | 35 | 13 | 130 |
| S500-4-R | 40 | 22 | 130 |
| S500-5-R | 50 | 42 | 120 |
| S500-6.3-R | 63 | 69 | 120 |
| S500-8-R | 80 | - | 120 |
| S500-10-R | 100 | - | 120 |

Options

Axial leads, put "V" in P/N,
*When ordering GDB version, do not add "-R" suffix to part number.

Data Sheet: 2052 (S500), 2015 (GDB)

S501-V (GDA-V)* (axial leads)

S501 (GDA)*

Specifications

Description: Fast-acting, high-breaking capacity fuse.

Construction:

Ceramic tube, nickel-plated brass endcaps (silver-plated endcaps 50mA-400mA).

Ratings:

- Volts — 250Vac (or less)
- 32Vdc (Self Certified)
- Amps — 50mA-10A**
- IR — 1500A @ 250Vac



Agency Information: CE, cURus, SEMKO, VDE, IMQ, CCC, CSA, BSI. See data sheet for complete agency information. Not all approvals apply to all ratings.

Features and Benefits

- Fast-acting for maximum protection.
- High break capacity for use in higher fault energy electronic circuitry.
- Conforming to IEC standards.

Typical Applications

- Electronic Circuits

Catalog Numbers (Amps)

| Catalog Numbers | I ² t | Typical Voltage Drop (mV) |
|-----------------|------------------|---------------------------|
| S501-50-R | 0.0017 | 9000 |
| S501-63-R | 0.0005 | 3300 |
| S501-80-R | 0.0011 | 2600 |
| S501-100-R | 0.0018 | 2300 |
| S501-125-R | 0.0037 | 1900 |
| S501-160-R | 0.008 | 1600 |
| S501-200-R | 0.020 | 1350 |
| S501-250-R | 0.027 | 1300 |
| S501-315-R | 0.010 | 1400 |
| S501-400-R | 0.018 | 1200 |
| S501-500-R | 0.038 | 1050 |
| S501-630-R | 0.064 | 1200 |
| S501-800-R | 0.097 | 490 |
| S501-1-R | 0.146 | 330 |
| S501-1.25-R | 0.313 | 297 |
| S501-1.6-R | 0.748 | 239 |
| S501-2-R | 2.0 | 205 |
| S501-2.5-R | 3.9 | 190 |
| S501-3.15-R | 8.1 | 160 |
| S501-4-R | 14 | 160 |
| S501-5-R | 25 | 155 |
| S501-6.3-R | 48 | 150 |
| S501-8-R | N/A | N/A |
| S501-10-R | N/A | N/A |

Options

Axial leads, put "V" in P/N.
*When ordering GDA version, do not add "-R" suffix to part number.
**GDA is not available above 6.3A.

Data Sheet: 2051 (S501), 2014 (GDA)

S505-V (axial leads)

S505

Specifications

Description: Time-delay, high-breaking capacity fuse.

Construction:

Ceramic tube, silver-plated brass endcaps.

Ratings:

- Volts — 250Vac (or less)
- 32Vdc (Self Certified)
- Amps — 500mA-12A
- IR — 1500A @ 250Vac



Agency Information: UL, CSA, SEMKO, VDE, BSI, IMQ, PSE/JET, CCC, EK, FIMKO.

See data sheet for complete agency information. Not all approvals apply to all ratings.

Features and Benefits

- Time-delay performance ideal for inductive circuits.
- Conforming to IEC standards.

Typical Applications

- Electronic Circuits

Catalog Numbers (Amps)

| Catalog Numbers | Typical I ² t | Max Voltage Drop (mV) |
|-----------------|--------------------------|-----------------------|
| S505-500-R | 0.188* | 295 |
| S505-800-R | 0.632* | 189 |
| S505-1-R | 1.28 | 152.5 |
| S505-1.25-R | 2.22 | 150 |
| S505-1.6-R | 6.78 | 125 |
| S505-2-R | 9.60 | 118.5 |
| S505-2.5-R | 16.60 | 115 |
| S505-3.15-R | 36.60 | 102.5 |
| S505-4-R | 38.45* | 86.5 |
| S505-5-R | 71.30* | 77.5 |
| S505-6.3-R | 197 | 75 |
| S505-8-R | 311 | 75 |
| S505-10-R | 397 | 72 |
| S505-12-R | 713.7* | 77 |

*The typical I²t value was measured at 10 times of rated current under DC.

Options

Axial leads, put "V" in P/N.

Data Sheet: 2037

5 x 20mm European (IEC) Ferrule Fuses

S505H (S505H-V)* (axial leads)

Specifications

Description: Time-delay, high-breaking capacity fuse.

Construction:

Ceramic tube, nickel-plated brass endcaps.

Ratings:

- Volts — 600Vac/400Vdc
- 500mA-5A
- 6.3A-10A
- 500Vac/400Vdc

Amps — 500mm-10A

IR — 35A @ 250Vac

Agency Information: cURus, CCC, CQC, TUV, PSE/JET.

See data sheet for complete agency information. Not all approvals apply to all ratings.

Features and Benefits

- Time-delay, high breaking capacity
- Conforming to IEC standards

Typical Applications

- Power supplies - adapters
- Desktops/notebooks

Catalog Numbers (Amps)

| Catalog Numbers | Typical I^2t (A ² s) ¹ | Max Voltage Drop (mV) ³ |
|-----------------|--|------------------------------------|
| S505H-500-R | 0.188 | 295 |
| S505H-800-R | 0.632 | 189 |
| S505H-1-R | 1.28 | 153 |
| S505H-1.25-R | 2.22 | 150 |
| S505H-1.6-R | 6.78 | 125 |
| S505H-2-R | 11.44 | 128 |
| S505H-2.5-R | 24.23 | 126 |
| S505H-3.15-R | 43.55 | 121 |
| S505H-4-R | 38.45 | 90 |
| S505H-5-R | 71.3 | 89 |
| S505H-6.3-R | 111.4 | 80 |
| S505H-8-R | 228.2 | 76 |
| S505H-10-R | 349.5 | 72 |

1. Typical Pre-Arc I²t: Measured at 10I_n DC.
 2. - Breaking Capacity of 250VAC/1500A is tested by all agency approvals, test condition is 250Vac, PF: 0.7-0.8.
 - Breaking Capacity of Max. voltage is tested by UL, PF:1.
 - Breaking Capacity Test of DC is tested by UL under Capacitor Bank 4800mF (for 400V, 1500A) 2400mF (for 400V, 500A).
 3. Typical Voltage Drop: Voltage drop is measured under ambient 20°C with rated current.

Options

Axial leads, put "V" in P/N.



S506-V (GDC-V)* (axial leads)

S506 (GDC)*

Specifications

Description: Time-delay, low-breaking capacity fuse.

Construction: Glass tube, nickel-plated brass endcaps.

Ratings:

- Volts — 250Vac (or less)
- 32Vdc (Self Certified)
- Amps — 32mA-15A**
- IR — 35A @ 250Vac

Agency Information: UR, CSA, cURus, SEMKO, VDE, BSI, IMQ, PSE/JET, CCC.

See data sheet for complete agency information. Not all approvals apply to all ratings.

Features and Benefits

- Time-delay compatibility for inductive circuits
- Conforming to IEC standards

Typical Applications

- Electronic Circuits

Catalog Numbers (Amps)

| Catalog Numbers | Typical I^2t | Max Voltage Drop (mV) |
|-----------------|----------------|-----------------------|
| S506-32-R | 0.0051 | 1050 |
| S506-40-R | 0.0072 | 920 |
| S506-50-R | 0.0095 | 800 |
| S506-63-R | 0.021 | 760 |
| S506-80-R | 0.038 | 580 |
| S506-100-R | 0.045 | 490 |
| S506-125-R | 0.063 | 390 |
| S506-160-R | 0.093 | 320 |
| S506-200-R | 0.114 | 340 |
| S506-250-R | 0.265 | 270 |
| S506-315-R | 0.621 | 250 |
| S506-400-R | 0.872 | 210 |
| S506-500-R | 0.827 | 140 |
| S506-630-R | 1.33 | 150 |
| S506-800-R | 2.78 | 75 |
| S506-1-R | 6.45 | 87.5 |
| S506-1.25-R | 10.05 | 86 |
| S506-1.6-R | 21.7 | 82 |
| S506-2-R | 31.6 | 77 |
| S506-2.5-R | 59.4 | 72.5 |
| S506-3.15-R | 96.4 | 68.5 |
| S506-4-R | 71.8 | 67 |
| S506-5-R | 142.5 | 60.5 |
| S506-6.3-R | 237.6 | 54 |
| S506-8-R | 255.8 | 55 |
| S506-10-R | 450 | 54 |
| S506-12.5-R | 1019.5 | 45 |
| S506-15-R | 1091.7 | 65.5 |

Options

Axial leads, put "V" in P/N.

*When ordering GDC version, do not add "-R" suffix to part number.

**GDC series is not available above 6.3A.



Data Sheet: 4406

Data Sheet: 2016 (GDC), 4332 (S506)

5 x 20mm North American (UL) Ferrule Fuses

GMA-V (axial leads)

GMA

Specifications

Description:

Fast-acting fuse.

Dimensions:

5 x 20mm
(0.197" x 0.788").

Construction:

Glass tube,
nickel-plated brass
endcaps.



Ratings:

- Volts — 250Vac (63mA-2.5A)
- 125Vac (3.15-15A)
- 32Vdc (Self Certified)
- Amps — 63mA-15A
- IR — 35A (63mA- 1A @ 250Vac,
p.f. = 0.7-0.8)
- 10kA (63mA-6A @ 125Vac,
p.f. = 0.7-0.8)
- 100A (1.25-2.5A @ 250Vac,
p.f. = 0.7-0.8)
- 200A (7-8A @ 125Vac, p.f. = 1.0)
- 150A (10-15A @ 125Vac,
p.f. = 1.0)

Agency Information: CE, Std. 248-14, UL Listed Guide JDYX, File E19180, 0-6A, UL Recognized, Guide JDYX2, File E19180, 7-15A, CSA Certified, Class 1422-01, File 53787, 0-6.

Features and Benefits

- Fast-acting for maximum protection.

Typical Applications

- Electronic Circuits

Catalog Numbers (Amps)

With Axial Leads

| | | |
|-------------|--------------|------------|
| GMA-V-63-R | GMA-V-800-R | GMA-V-4-R |
| GMA-V-100-R | GMA-V-1-R | GMA-V-5-R |
| GMA-V-125-R | GMA-V-1.25-R | GMA-V-6-R |
| GMA-V-200-R | GMA-V-1.5-R | GMA-V-7-R |
| GMA-V-250-R | GMA-V-1.6-R | GMA-V-8-R |
| GMA-V-300-R | GMA-V-2-R | GMA-V-10-R |
| GMA-V-500-R | GMA-V-2.5-R | GMA-V-15-R |
| GMA-V-600-R | GMA-V-3.15-R | |
| GMA-V-750-R | GMA-V-3.5-R | |

Without Axial Leads

| | | |
|-----------|------------|----------|
| GMA-63-R | GMA-800-R | GMA-4-R |
| GMA-100-R | GMA-1-R | GMA-5-R |
| GMA-125-R | GMA-1.25-R | GMA-6-R |
| GMA-200-R | GMA-1.5-R | GMA-7-R |
| GMA-250-R | GMA-1.6-R | GMA-8-R |
| GMA-300-R | GMA-2-R | GMA-10-R |
| GMA-500-R | GMA-2.5-R | GMA-15-R |
| GMA-600-R | GMA-3.15-R | |
| GMA-750-R | GMA-3.5-R | |

Data Sheet: 2017

GMC-V (axial leads)

GMC

Specifications

Description: Medium time-delay fuse.

Dimensions: 5 x 20mm
(0.197" x 0.788").

Construction: Glass tube, nickel-plated brass endcaps.

Ratings:

- Volts — 250Vac (63mA-3.15A)
- 125Vac (3.5-10A)
- 32Vdc (Self Certified)
- Amps — 63mA-10A
- IR — 35A (63mA- 1A @ 250Vac,
p.f. = 0.7-0.8)
- 10kA (63mA-6A @ 125Vac, p.f. = 0.7-0.8)
- 100A (1.25-3.15A @ 250Vac,
p.f. = 0.7-0.8)
- 200A (6.3-10A @ 125Vac, p.f. = 1.0)

Agency Information: CE, Std. 248-14, UL Listed Guide JDYX, File E19180, 0-6.3A, UL Recognized, Guide JDYX2, File E19180, 7-8A, CSA Certified, Class 1422-01, File 53787, 0-6.3A.

Features and Benefits

- Conforming to UL standards.

Typical Applications

- Electronic Circuits

Catalog Numbers (Amps)

With Axial Leads

| | | |
|-------------|--------------|------------|
| GMC-V-63-R | GMC-V-500-R | GMC-V-2.5 |
| GMC-V-80-R | GMC-V-600-R | GMC-V-3.15 |
| GMC-V-100-R | GMC-V-630-R | GMC-V-3.5 |
| GMC-V-125-R | GMC-V-750-R | GMC-V-4 |
| GMC-V-150-R | GMC-V-800-R | GMC-V-5 |
| GMC-V-200-R | GMC-V-1-R | GMC-V-6 |
| GMC-V-250-R | GMC-V-1.25-R | GMC-V-6.3 |
| GMC-V-300-R | GMC-V-1.5-R | GMC-V-7 |
| GMC-V-315-R | GMC-V-1.6-R | GMC-V-8 |
| GMC-V-400-R | GMC-V-2-R | GMC-V-10 |

Without Axial Leads

| | | |
|-----------|------------|------------|
| GMC-63mA | GMC-500-R | GMC-2.5-R |
| GMC-80mA | GMC-600-R | GMC-3.15-R |
| GMC-100mA | GMC-630-R | GMC-3.5-R |
| GMC-125mA | GMC-750-R | GMC-4-R |
| GMC-150mA | GMC-800-R | GMC-5-R |
| GMC-200mA | GMC-1-R | GMC-6-R |
| GMC-250mA | GMC-1.25-R | GMC-6.3-R |
| GMC-300mA | GMC-1.5-R | GMC-7-R |
| GMC-315mA | GMC-1.6-R | GMC-8-R |
| GMC-400mA | GMC-2-R | GMC-10-R |

Data Sheet: 4395



GMD-V (axial leads)

GMD

Specifications

Description: Time-delay fuse.

Dimensions:

5 x 20mm
(0.197" x 0.788").

Construction:

Glass tube, nickel-plated brass endcaps.



Ratings:

- Volts — 250Vac
- 32Vdc (Self Certified)
- Amps — 125mA-4A
- IR — 10kA (125mA-3A @ 125Vac,
p.f. = 0.7-0.8)
- 10kA (4A @ 125Vac,
p.f. = 1.0)
- 35A (125mA-1A @ 250Vac,
p.f. = 0.7-0.8)
- 100A (1.2A-3.A @ 250Vac,
p.f. = 0.7-0.8)
- 200A (4A @ 250Vac,
p.f. = 1.0)

Agency Information: CE, UL Listed Guide JDYX, File E19180, 125mA-3A, UL Recognized, Guide JDYX2, File E19180, 4A, CSA Certified, Class 1422-01, File 53787, 0-4A, PSE/JET. File 1641-31003-1001, 1.2A-4A.

Features and Benefits

- Time-delay compatibility for inductive circuits.
- Conforming to UL standards.

Typical Applications

- Electronic Circuits

Catalog Numbers (Amps)

With Axial Leads

| | | |
|-------------|--------------|-------------|
| GMD-V-125-R | GMD-V-500-R | GMD-V-1.5-R |
| GMD-V-150-R | GMD-V-600-R | GMD-V-1.6-R |
| GMD-V-200-R | GMD-V-630-R | GMD-V-2-R |
| GMD-V-250-R | GMD-V-750-R | GMD-V-2.5-R |
| GMD-V-300-R | GMD-V-800-R | GMD-V-3-R |
| GMD-V-315-R | GMD-V-1-R | GMD-V-4-R |
| GMD-V-375-R | GMD-V-1.2-R | |
| GMD-V-400-R | GMD-V-1.25-R | |

Without Axial Leads

| | | |
|-----------|------------|-----------|
| GMD-125-R | GMD-500-R | GMD-1.5-R |
| GMD-150-R | GMD-600-R | GMD-1.6-R |
| GMD-200-R | GMD-630-R | GMD-2-R |
| GMD-250-R | GMD-750-R | GMD-2.5-R |
| GMD-300-R | GMD-800-R | GMD-3-R |
| GMD-315-R | GMD-1-R | GMD-4-R |
| GMD-375-R | GMD-1.2-R | |
| GMD-400-R | GMD-1.25-R | |

Data Sheet: 2019

1/4" Dia. x 5/8" to 1" Length Ferrule Fuses

AGA

Specifications

Description: Fast-acting fuse.

Dimensions:

1/4" x 5/8"
(6.4 x 15.9mm).

Construction: Glass tube.

Ratings:

Volts — 125Vac (or less)
— 32Vdc (Self Certified)

Amps — 1-30A

IR — 10kA (1-1 1/2A @ 125Vac)
— 200A (2-5A @ 125Vac)
— 1000A (6-30A @ 32Vac)

Agency Information: CE, Std. 248-14, UL File E19180, UL Listed, Guide JDYX 0-3 1/2A UL Recognized, Guide JDYX2 12-30A.

Features and Benefits

- Fast-acting for maximum protection.
- Size rejects insertion of other fuse types.

Typical Applications

- Electronic Circuits

Catalog Numbers (Amps)

| | | |
|-----------|-----------|--------|
| AGA-1 | AGA-5 | AGA-15 |
| AGA-1-1/2 | AGA-6 | AGA-20 |
| AGA-2 | AGA-7 | AGA-25 |
| AGA-2-1/2 | AGA-7-1/2 | AGA-30 |
| AGA-3 | AGA-10 | |



AGW

Specifications

Description: Fast-acting fuse.

Dimensions: 1/4" x 7/8"
(6.4 x 22.2mm).

Construction: Glass tube.

Ratings:

Volts — 32Vac
— 32Vdc (Self Certified)

Amps — 1-30A

Features and Benefits

- Fast-acting for maximum protection.

Typical Applications

- Electronic Circuits

Catalog Numbers (Amps)

| | | |
|-----------|-----------|--------|
| AGW-1 | AGW-4 | AGW-15 |
| AGW-1-1/2 | AGW-5 | AGW-20 |
| AGW-2 | AGW-6 | AGW-25 |
| AGW-2-1/2 | AGW-7-1/2 | AGW-30 |
| AGW-3 | AGW-10 | |



AGX

Specifications

Description: Fast-acting fuse.

Dimensions: 1/4" x 1"
(6.4 x 25.4mm).

Construction: Glass tube.

Ratings:

Volts — 250Vac (1/6-20A)
— 125Vac (25-30A)
— 32Vdc (1/6-30A)

Amps — 1/6-30A

IR — 35A (1/6-1A @ 250Vac)
— 10kA (1/6-10A @ 125Vac)
— 200A (15-20A @ 125Vac)
— 100A (25-30A @ 125Vac)
— 1000A (8-30A @ 32Vac)

Agency Information: cULus: AGX 0-10A (Guide JDYX, File E 19180 and Guide JDYX7, File E19180), UL Recognized Card: AGX 15-30A (Guide JDYX2, File E19180), CSA Component Acceptance Card : AGX 15-30A (Class No. 1422-01, File 53787)

Features and Benefits

- Size rejects insertion of other fuse types.

Typical Applications

- Electronic Circuits

Catalog Numbers (Amps)

| | | |
|-----------|-----------|--------|
| AGX-1/4 | AGX-1-1/2 | AGX-8 |
| AGX-3/16 | AGX-2 | AGX-10 |
| AGX-3/8 | AGX-2-1/2 | AGX-15 |
| AGX-1/2 | AGX-3 | AGX-20 |
| AGX-5/8 | AGX-4 | AGX-25 |
| AGX-3/4 | AGX-5 | AGX-30 |
| AGX-1 | AGX-6 | |
| AGX-1-1/4 | AGX-7 | |



1/4" Dia. x 1 1/4" Length Fast-acting Ferrule Fuses

AGC (AGC-V axial leads)

Specifications

Description:

Fast-acting fuse.

Dimensions: 1/4" x 1 1/4"
(6.4 x 31.7mm).

Construction: Glass tube with nickel-plated brass endcaps.

Ratings:

- Volts — 250Vac (1/20-10A)
- 32Vac (12-30A)
- 32Vdc (Self Certified)
- Amps — 1/20-30A
- IR — 35A (1/20-1A @ 250Vac)
- 100A (1 1/4-3A @ 250Vac)
- 200A (4-10A @ 250Vac)
- 10kA (1/20-10A @ 125Vac)
- 1000A (12-30A @ 32Vac)



RoHS

Agency Information: CE, UL Listed, Guide JDYX, File E19180, 0-10A UL Recognized, Guide JDYX2, File E19180, 12-30A CSA Certification, Class 1422-01, File 053787, 1/20-30A.

Features and Benefits

- Original electronic glass tube fuse.
- Fast-acting for maximum protection.
- Wide amp/volt ratings allow versatility of protecting electronic circuits.

Typical Applications

- Electronic Circuits

Catalog Numbers (Amps)

With Axial Leads

| | | |
|--------------|---------------|------------|
| AGC-V-1/20-R | AGC-V-1-1/4-R | AGC-V-8-R |
| AGC-V-1/10-R | AGC-V-1-1/2-R | AGC-V-9-R |
| AGC-V-1/6-R | AGC-V-2-R | AGC-V-10-R |
| AGC-V-3/10-R | AGC-V-2-1/4-R | AGC-V-12-R |
| AGC-V-1/5-R | AGC-V-2-1/2-R | AGC-V-14-R |
| AGC-V-3/4-R | AGC-V-3-R | AGC-V-15-R |
| AGC-V-3/10-R | AGC-V-4-R | AGC-V-20-R |
| AGC-V-3/6-R | AGC-V-5-R | AGC-V-25-R |
| AGC-V-1/2-R | AGC-V-6-R | AGC-V-30-R |
| AGC-V-3/4-R | AGC-V-7-R | |
| AGC-V-1-R | AGC-V-7-1/2-R | |

Without Axial Leads

| | | |
|------------|-------------|----------|
| AGC-1/20-R | AGC-1-1/4-R | AGC-8-R |
| AGC-1/10-R | AGC-1-1/2-R | AGC-9-R |
| AGC-1/6-R | AGC-2-R | AGC-10-R |
| AGC-1/5-R | AGC-2-1/4-R | AGC-12-R |
| AGC-3/10-R | AGC-2-1/2-R | AGC-14-R |
| AGC-3/4-R | AGC-3-R | AGC-15-R |
| AGC-3/10-R | AGC-4-R | AGC-20-R |
| AGC-3/6-R | AGC-5-R | AGC-25-R |
| AGC-1/2-R | AGC-6-R | AGC-30-R |
| AGC-3/4-R | AGC-7-R | |
| AGC-1-R | AGC-7-1/2-R | |

Data Sheet: 2001

ABC (ABC-V axial leads)

Specifications

Description:

Fast-acting fuse.

Dimensions: 1/4" x 1 1/4"
(6.4 x 31.7mm).

Construction: Ceramic tube with nickel-plated brass endcaps.

Ratings:

- Volts — 250Vac/125Vdc (1/4-15A, 20-30A)*
- 250Vac (18A)
- 32Vdc (Self Certified)
- Amps — 1/4-30A
- IR** — 35A (1/4-1A @ 250Vac)
- 100A (1 1/4-3A @ 250Vac)
- 200A (4-10A @ 250Vac)
- 750A (12-15A @ 250Vac)
- 400A (18-20A @ 250Vac)
- 10kA (1/4-15A @ 125Vac)
- 1kA (18-30A @ 125Vac)
- 10kA (1/4-15, 20A @ 125Vdc)
- 400A (25-30A @ 125Vdc)
- 200A (25-30A @ 250Vac)



RoHS

*CSA approvals for 25A and 30A are at 125Vac - IR 1000A and Vdc - IR 400A (IR 1000A at 75Vdc)

**Interrupting ratings measured at 70% - 80% power factor on AC. The interrupting ratings for 18A and 20A were measured at 85%-95% power factor on AC. The interrupting ratings for 25A and 30A were measured at 89% power factor on AC.

Agency Information: CE, Std. 248-14 UL Listed, Guide JDYX File E19180, 1/4-15A; UL Recognized, Guide JDYX2, File E19180, 18-30A; CSA Certification, Class 1422-01 & 1422-30, File 53787, 1/4-30A.

Features and Benefits

- Ceramic body allows for higher amp/volt rating combinations.

Typical Applications

- Electronic Circuits

Catalog Numbers (Amps)

With Axial Leads

| | | |
|---------------|------------|------------|
| ABC-V-1/4-R | ABC-V-3-R | ABC-V-12-R |
| ABC-V-1/2-R | ABC-V-4-R | ABC-V-15-R |
| ABC-V-3/4-R | ABC-V-5-R | ABC-V-18-R |
| ABC-V-1-R | ABC-V-6-R | ABC-V-20-R |
| ABC-V-1-1/2-R | ABC-V-7-R | ABC-V-25-R |
| ABC-V-2-R | ABC-V-8-R | ABC-V-30-R |
| ABC-V-2-1/2-R | ABC-V-10-R | |

Without Axial Leads

| | | |
|-------------|----------|----------|
| ABC-1/4-R | ABC-3-R | ABC-12-R |
| ABC-1/2-R | ABC-4-R | ABC-15-R |
| ABC-3/4-R | ABC-5-R | ABC-18-R |
| ABC-1-R | ABC-6-R | ABC-20-R |
| ABC-1-1/2-R | ABC-7-R | ABC-25-R |
| ABC-2-R | ABC-8-R | ABC-30-R |
| ABC-2-1/2-R | ABC-10-R | |

Data Sheet: 2000

GBB (GBB-V axial leads)

Specifications

Description:

Very fast-acting fuse.

Dimensions: 1/4" x 1 1/4"
(6.4 x 31.7mm).

Construction: Ceramic cartridge with nickel-plated brass endcaps.

Ratings:

- Volts — 250Vac/125Vdc
- Amps — 1-30A
- IR — 200A @ 250Vac
- 200A (20-30A @ 125Vac/dc)
- 10,000A (1A -15A @ 125Vac/dc)



RoHS

Agency Information:

CE, Std. 248-14, UL Recognized, 1-30, 125Vdc/250Vac, File E56412, Guide JFHR2, CSA Accepted, 1-30, 125Vdc/250Vac, File 53787, Class 1422-30.

Features and Benefits

- Very fast-acting performance allows protection of highly sensitive electronic circuitry.

Typical Applications

- Electronic Circuits

Catalog Numbers (Amps)

With Axial Leads

| | | |
|---------------|------------|------------|
| GBB-V-1-R | GBB-V-6-R | GBB-V-15-R |
| GBB-V-1-1/4-R | GBB-V-7-R | GBB-V-20-R |
| GBB-V-2-R | GBB-V-8-R | GBB-V-25-R |
| GBB-V-3-R | GBB-V-9-R | GBB-V-30-R |
| GBB-V-4-R | GBB-V-10-R | |
| GBB-V-5-R | GBB-V-12-R | |

Without Axial Leads

| | | |
|-------------|----------|----------|
| GBB-1-R | GBB-6-R | GBB-15-R |
| GBB-1-1/4-R | GBB-7-R | GBB-20-R |
| GBB-2-R | GBB-8-R | GBB-25-R |
| GBB-3-R | GBB-9-R | GBB-30-R |
| GBB-4-R | GBB-10-R | |
| GBB-5-R | GBB-12-R | |

Data Sheet: 2013

1/4" Dia. x 1 1/4" Length Time-delay Ferrule Fuses

MDL-V (axial leads)

MDL

Specifications

Description:

Time-delay fuse.

Dimensions: 1/4" x 1 1/4"
(6.4 x 31.7mm).

Construction: Glass tube with nickel-plated brass endcaps.

Ratings:

- Volts — 250Vac (1/6-8A)
- 32Vac (9-30A)
- 32Vdc (Self Certified)
- Amps — 1/6-30A
- IR* — 35A (1/6-1A @ 250Vac)
- 100A (1 1/4-3A @ 250Vac)
- 200A (4-8A @ 250Vac)
- 10000A (1/6-8A @ 125Vac)
- 1000A (9-30A @ 32Vac)



RoHS

*Interrupting ratings were measured at 70% – 80% power factor on AC, and at a time constant described in UL 198L.

Agency Information: CE, UL Listed, Guide JDYX, File E19180, 1/6-8A; CSA Certification Class 1422-01, 1/6-8A; UL Recognized, Guide JDYX2, File E19180, 9-30A; CSA Component Acceptance, Class 142230, 9-30A.

Features and Benefits

- Time-delay allows close sizing on inductive circuits.

Typical Applications

- Electronic Circuits

Catalog Numbers (Amps)

With Axial Leads

| | | |
|--------------|---------------|------------|
| MDL-V-1/6-R | MDL-V-1-R | MDL-V-7-R |
| MDL-V-1/10-R | MDL-V-1-1/4-R | MDL-V-8-R |
| MDL-V-1/8-R | MDL-V-1-1/2-R | MDL-V-9-R |
| MDL-V-3/16-R | MDL-V-2-R | MDL-V-10-R |
| MDL-V-1/4-R | MDL-V-2-1/2-R | MDL-V-12-R |
| MDL-V-3/8-R | MDL-V-2-1/2-R | MDL-V-15-R |
| MDL-V-1/2-R | MDL-V-3-R | MDL-V-20-R |
| MDL-V-5/8-R | MDL-V-4-R | MDL-V-25* |
| MDL-V-1-R | MDL-V-5-R | MDL-V-30* |
| MDL-V-3/4-R | MDL-V-6-R | |

Without Axial Leads

| | | |
|------------|-------------|----------|
| MDL-1/6-R | MDL-1-R | MDL-7-R |
| MDL-1/10-R | MDL-1-1/4-R | MDL-8-R |
| MDL-1/8-R | MDL-1-1/2-R | MDL-9-R |
| MDL-3/16-R | MDL-2-R | MDL-10-R |
| MDL-1/4-R | MDL-2-1/2-R | MDL-12-R |
| MDL-3/8-R | MDL-2-1/2-R | MDL-15-R |
| MDL-1/2-R | MDL-3-R | MDL-20-R |
| MDL-5/8-R | MDL-4-R | MDL-25* |
| MDL-1-R | MDL-5-R | MDL-30* |

*MDL-25 & MDL-30 are not available in RoHS compliant construction.

Data Sheet:2004

MDQ-V (axial leads)

MDQ

Specifications

Description:

Dual-element, time-delay fuse.

Dimensions: 1/4" x 1 1/4"
(6.4 x 31.7mm).

Construction: Glass tube with nickel-plated brass endcaps.

Ratings:

- Volts — 250Vac (1/100-7A)
- 32Vac (7 1/2-15A)
- 32Vdc (Self Certified)
- Amps — 1/100-15A
- IR — 35A (1/100-1A @ 250Vac)
- 100A (1 1/4-3A @ 250Vac)
- 200A (4-7A @ 250Vac)
- 1000A (7 1/2-12A @ 32Vac)



Agency Information: Std. 248-14, UL Listed, File E19180; Guide JDYX, 1/6-7A CSA Certification, File 47233, Class 1422-01, 1/6-7A, UL Recognized, Guide JDYX2, File E19180, 7.1-30A.

Features and Benefits

- Dual-element design allows closer sizing to inductive circuits than any other fuses.

Typical Applications

- Electronic Relay and Control Circuits

Catalog Numbers (Amps)

With Axial Leads

| | | | |
|-------------|-------------|-------------|-------------|
| MDQ-V-1/100 | MDQ-V-1/50 | MDQ-V-1-1/2 | MDQ-V-5 |
| MDQ-V-1/50 | MDQ-V-1/25 | MDQ-V-1-3/4 | MDQ-V-6 |
| MDQ-V-1/25 | MDQ-V-1/10 | MDQ-V-1-3/4 | MDQ-V-6-1/2 |
| MDQ-V-1/10 | MDQ-V-1/5 | MDQ-V-2 | MDQ-V-7 |
| MDQ-V-1/5 | MDQ-V-1/2 | MDQ-V-2-1/4 | MDQ-V-7-1/2 |
| MDQ-V-1/2 | MDQ-V-1/2 | MDQ-V-2-1/2 | MDQ-V-8 |
| MDQ-V-1/2 | MDQ-V-1/2 | MDQ-V-2-1/2 | MDQ-V-9 |
| MDQ-V-3/16 | MDQ-V-1 | MDQ-V-3 | MDQ-V-10 |
| MDQ-V-1/4 | MDQ-V-1-1/4 | MDQ-V-3-3/4 | MDQ-V-12 |
| MDQ-V-1/2 | MDQ-V-1-1/2 | MDQ-V-4 | MDQ-15 |

Without Axial Leads

| | | | |
|-----------|-----------|-----------|-----------|
| MDQ-1/100 | MDQ-1/50 | MDQ-1-1/2 | MDQ-5 |
| MDQ-1/50 | MDQ-1/25 | MDQ-1-3/4 | MDQ-6 |
| MDQ-1/25 | MDQ-1/10 | MDQ-1-3/4 | MDQ-6-1/2 |
| MDQ-1/10 | MDQ-1/5 | MDQ-2 | MDQ-7 |
| MDQ-1/5 | MDQ-1/2 | MDQ-2-1/4 | MDQ-7-1/2 |
| MDQ-1/2 | MDQ-1/2 | MDQ-2-1/2 | MDQ-8 |
| MDQ-1/2 | MDQ-1/2 | MDQ-2-1/2 | MDQ-9 |
| MDQ-3/16 | MDQ-1 | MDQ-3 | MDQ-10 |
| MDQ-1/4 | MDQ-1-1/4 | MDQ-3-3/4 | MDQ-12 |
| MDQ-1/2 | MDQ-1-1/2 | MDQ-4 | MDQ-15 |

Data Sheet: 2044

MDA-V (axial leads)

MDA

Specifications

Description:

Time-delay fuse.

Dimensions: 1/4" x 1 1/4" (6.35 x 31.75mm).

Construction: Ceramic tube with nickel-plated brass endcaps.

Ratings:

- Volts — 250Vac (or less)
- 125Vdc (20A- 30A)
- 32Vdc (Self Certified)
- Amps — 1/4-30A
- IR** — 35A (1/4-1A @ 250Vac)
- 100A (1 1/2-2A @ 250Vac)
- 200A (2 1/2-10A @ 250Vac)
- 750A (12-15A @ 250Vac)
- 1500A (20-30A @ 250Vac)
- 10kA (1/4-30A @ 125Vac)
- 10kA (20-30A @ 125Vdc)



RoHS

**Interrupting ratings were measured at 70% – 80% power factor on AC, and at a time constant described in UL 248.

Agency Information: CE, Std. 248-14, UL Listed, Guide JDYX, File E19180, 0-20A CSA Certification, Class 1422-01, File 53787, 0-20A. UL Recognized, Guide JDYX2, File E19180, 25-30A, CSA Component Acceptance, Class 1422-30, 25-30A

Features and Benefits

- Ceramic body allows for higher amp/volt rating combinations.
- Inventory consolidation by replacing MDL fuses allows for reduced SKU investment and minimizing potential for misapplying fuse.

Typical Applications

- Electronic Circuits

Catalog Numbers (Amps)

With Axial Leads

| | | |
|---------------|------------|------------|
| MDA-V-1/4-R | MDA-V-3-R | MDA-V-12-R |
| MDA-V-1/2-R | MDA-V-4-R | MDA-V-15-R |
| MDA-V-3/4-R | MDA-V-5-R | MDA-V-20-R |
| MDA-V-1-R | MDA-V-6-R | MDA-V-25-R |
| MDA-V-1-1/2-R | MDA-V-7-R | MDA-V-30-R |
| MDA-V-2-R | MDA-V-8-R | |
| MDA-V-2-1/2-R | MDA-V-10-R | |

Without Axial Leads

| | | |
|-------------|----------|-----------|
| MDA-1/4-R | MDA-3-R | MDA-12-R |
| MDA-1/2-R | MDA-4-R | MDA-15-R |
| MDA-3/4-R | MDA-5-R | MDA-20-R |
| MDA-1-R | MDA-6-R | MDA-25A-R |
| MDA-1-1/2-R | MDA-7-R | MDA-30A-R |
| MDA-2-R | MDA-8-R | |
| MDA-2-1/2-R | MDA-10-R | |

Data Sheet: 2002

PC Board Mount Fuse Holders

HTC-45M



PCB Vertical Mount

Specifications

Description: PCB vertical mount bayonet cap and fuse holder.

Dimensions: See Dimensions illustration.

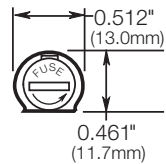
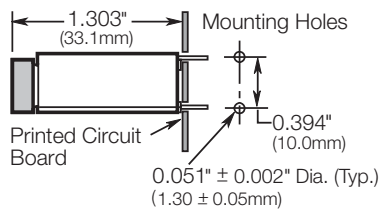
Ratings:

See Specifications table.

Agency Information:

See Specifications table notes 1, 2, 5.

Dimensions - in (mm)



Data Sheet 2110

HTC-50M



PCB Horizontal Mount

Specifications

Description: PCB horizontal mount bayonet cap and fuse holder.

Dimensions: See Dimensions illustration.

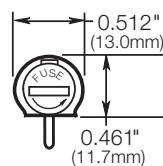
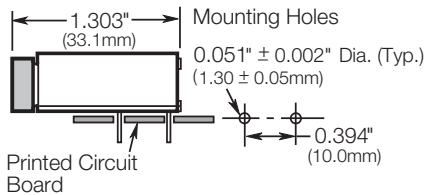
Ratings:

See Specifications table.

Agency Information:

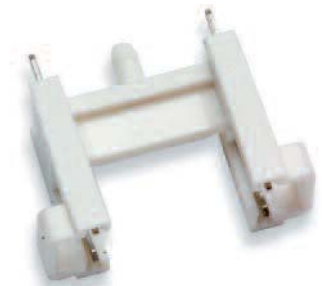
See Specifications table notes 1, 2.

Dimensions - in (mm)



Data Sheet 2110

HTC-60M



PCB Stand-Off Mount

Specifications

Description: Four-leg PCB stand-off fuse holder.

Dimensions: See Dimensions illustration.

Ratings:

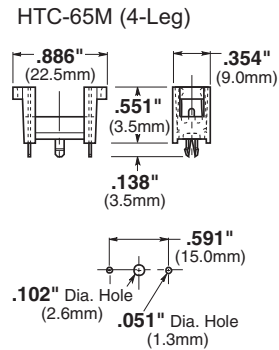
Volts: — 250V

Amps: — 6.3A

Agency Information:

See Specifications table notes 1, 4.

Dimensions - in (mm)



Data Sheet 2110

Specifications

Terminals — Tin-plated brass with 3mm (HTC-35M, -55M) and 4.8mm (HTC-70M).

Molded Materials — High temperature thermoplastic that meets the flammability ratings of UL 94VO; Glow Wire Test: 960°C per IEC 695-2-1.

Solderability — In accordance with IEC 68-2-20.

Electrical — Contact Resistance: ≤10mW; Insulation Resistance: ≥10MW; Dielectric Strength ≥2000Vac.

Shock Safety — PC2 (fuse holders).

Agency Information:

- 1) cURus: Guide 1ZLT2 & IZLT8, File E14853
- 2) VDE: 40004457
- 3) VDE: 40004458
- 4) VDE: 40004459
- 5) VDE: 40004463

PC Board Mount Fuse Holders

HBH-I (for 1/4" x 1 1/4" fuses)

HBH-M (for 5 x 20mm fuses)

PCB Horizontal Mount

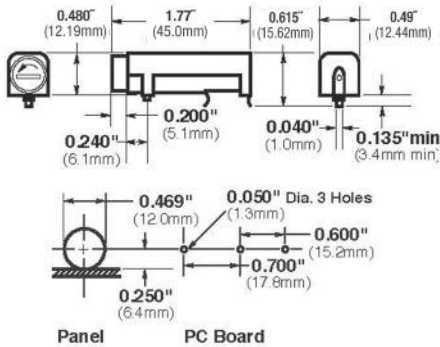
Specifications

Description: PCB horizontal mount fuse holder.

Dimensions: See Dimensions illustration.

Ratings: See Specifications table.

Dimensions - in (mm)



Data Sheet: 2118

HBV-I (for 1/4" x 1 1/4" fuses)

HBV-M (for 5 x 20mm fuses)

PCB Vertical Mount with Stability Pins

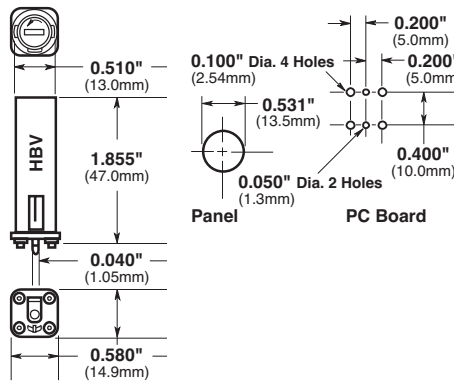
Specifications

Description: PCB vertical mount fuse holder with stability pins.

Dimensions: See Dimensions illustration.

Ratings: See Specifications table.

Dimensions - in (mm)



Data Sheet: 2118

HBW-I (for 1/4" x 1 1/4" fuses)

HBW-M (for 5 x 20mm fuses)

PCB Vertical Mount without Stability Pins

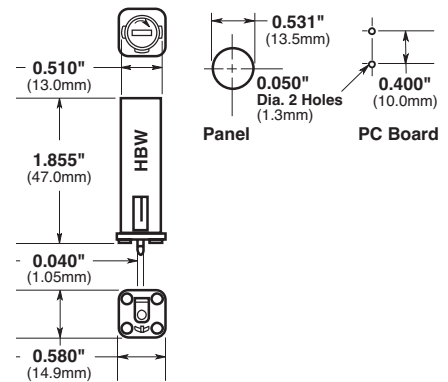
Specifications

Description: PCB vertical mount fuse holder without stability pins.

Dimensions: See Dimensions illustration.

Ratings: See Specifications table.

Dimensions - in (mm)



Data Sheet: 2118



FBI



FBM

Fuse Holder Caps (Fit all three shown above)

Specifications

Electrical Ratings: UL — 16A @ 250V; CSA — 12A @ 250V; VDE — 6.3A @ 250V; SEMKO — 10A @ 250V
Insulation resistance — 10 megohm at 500Vdc. **Contact resistance** — less than 0.005 ohms @ 200mV. **Dielectric strength** — over 200V/mil.

Molded Material: High dielectric molded phenolic with a UL 94V0 flammability rating.

Fuse Carrier & Knob: Spring-loaded, bayonet-type. Tin plated brass. Screwdriver slotted.

Mounting: "Kicked" terminals (all models) and stabilizer pins on HBV & HBW models for increased stability.

Temperature Rating (RTI): Body: 150°C, Knob: 130°C

Agency Information: CE, UL Recognized — Guide IZLT2, File EI4853;
 CSA Certified — Class 6225-01, File 47235
 VDE — 4009241 (HBV, HBW)
 SEMKO — 800444

PC Board Fuseclips for 5mm Diameter Fuses

HTC-15M, HTC-140M

PCB Mounted Fuse Holder & Snap-On Cover

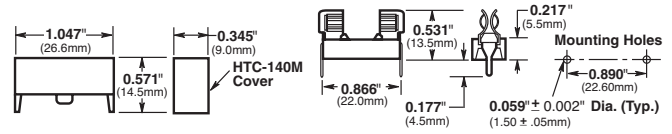
Voltage Rating: 250V, 6.3A, 1.6W

HTC-15M (fuse holder), HTC-140M (natural cover),
HTC-150M* (transparent cover)



Agency Information: See Specifications table notes 1, 3
on bottom of page 65

*Available in bulk only. Use this format: BK/HTC-150M
Data Sheet: 2110



HTC-200M

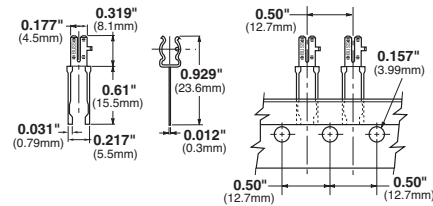
PCB Mounted Fuseclip

Construction: Tin-plated bronze

Tape and Fan Fold packed

Ammo Pack (AP/HTC-200M) 1000 pieces per box

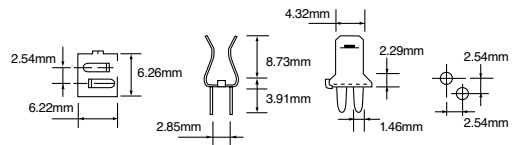
Data Sheet: 2110



HTC-210M

PCB Mounted Fuseclip with End Stops

Data Sheet: 2110



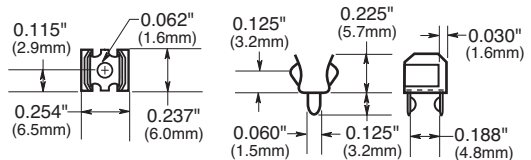
1A3399 Series

PCB Fuseclips with End Stops & Straight Leads

| Catalog Numbers | Clip Material* | Finish |
|-----------------|-------------------|------------|
| 1A3399-01 | Beryllium copper* | Silver |
| 1A3399-04-R | Beryllium copper* | Bright tin |
| 1A3399-10-R | Spring bronze | Bright tin |

*Beryllium copper recommended for amps higher than 15 amps.

Data Sheet: 2131



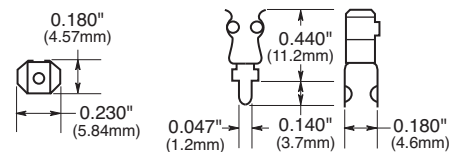
1A5018 Series

PCB High Profile Fuseclips with End Stops & Straight Leads

| Catalog Numbers | Clip Material* | Finish |
|-----------------|----------------|------------|
| 1A5018-7 | Spring bronze | Silver |
| 1A5018-10-R | Spring bronze | Bright tin |

*Beryllium copper recommended for amps higher than 15 amps.

Data Sheet: 2131

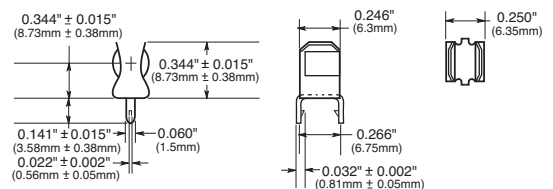


1A5601 Series

PCB Fuseclips (0-7A)

| Catalog Number | Clip Material | Finish |
|----------------|-----------------|------------|
| 1A5601 | Cartridge brass | Bright tin |

Data Sheet: 2131

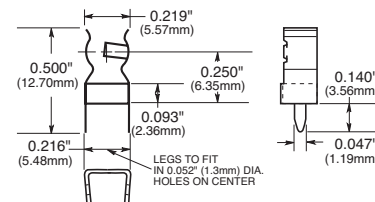


1A5602 Series

PCB Fuseclips (0-7A)

| Catalog Number | Clip Material | Finish |
|----------------|-----------------|------------|
| 1A5602 | Cartridge brass | Bright tin |

Data Sheet: 2131

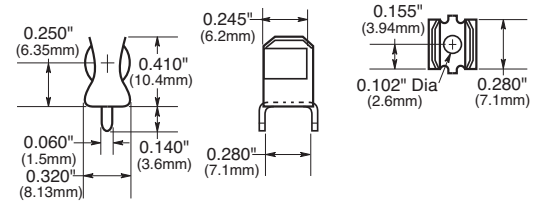


PC Board Fuseclips for 1/4" Diameter Fuses

1A3398 Series

PCB Fuseclips without End Stops with Straight Leads

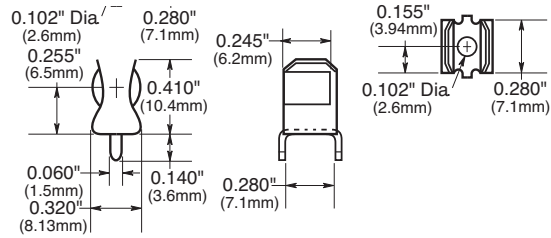
| Catalog Numbers | Clip Material | Finish |
|-----------------|-----------------|------------|
| 1A3398-07-R | Cartridge brass | Bright tin |



1A1907 Series

PCB Fuseclips with End Stops & Straight Leads

| Catalog Numbers | Clip Material* | Finish |
|-----------------|--------------------------|--------------------|
| 1A1907-02 | Cartridge brass | None/bright dipped |
| 1A1907-03-R | High Performance Copper* | Bright tin |
| 1A1907-05 | High Performance Copper* | Silver |
| 1A1907-06-R | Cartridge brass | Bright tin |

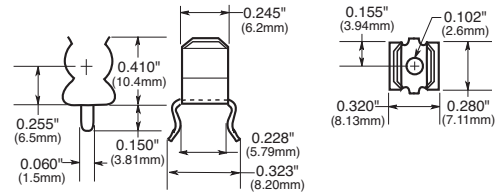


*High Performance Copper recommended for amps higher than 15A.
Data Sheet: 2131

1A4533 Series

PCB Fuseclips without End Stops or Angled Out Leads

| Catalog Numbers | Clip Material* | Finish |
|-----------------|--------------------------|------------|
| 1A4533-01-R | High Performance Copper* | Bright tin |
| 1A4533-06-R | Cartridge brass | Bright tin |

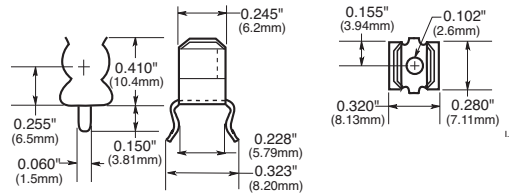


*High Performance Copper recommended for amps higher than 15A.
Data Sheet: 2131

1A4534 Series

PCB Fuseclips with End Stops & Angled Out Leads

| Catalog Numbers | Clip Material* | Finish |
|-----------------|--------------------------|------------|
| 1A4534-01-R | High Performance Copper* | Bright tin |
| 1A4534-06-R | Cartridge brass | Bright tin |

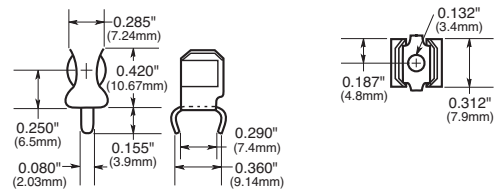


*High Performance Copper recommended for amps higher than 15A.
Data Sheet: 2131

1A1119 Series

Fuseclips with End Stops & Angled In Leads

| Catalog Numbers | Clip Material* | Finish |
|-----------------|--------------------------|------------|
| 1A1119-04-R | High Performance Copper* | Bright tin |
| 1A1119-05 | High Performance Copper* | Silver |
| 1A1119-10-R | Cartridge brass | Bright tin |

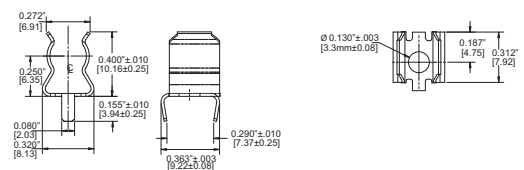


*High Performance Copper recommended for amps higher than 15A.
Data Sheet: 2131

1A1120 Series

PCB Fuseclips without End Stops or Angled In Leads

| Catalog Numbers | Clip Material* | Finish |
|-----------------|--------------------------|--------------------|
| 1A1120-02 | Cartridge brass | None/bright dipped |
| 1A1120-05 | High Performance Copper* | Silver |
| 1A1120-06-R | High Performance Copper* | Bright tin |
| 1A1120-09-R | Cartridge brass | Bright tin |



*High Performance Copper recommended for amps higher than 15A.
Data Sheet: 2131

PC Board Fuseclips for 1/4" Diameter Fuses

5681 & 5682 Series

PCB Fuseclips with Mounting Holes For 1/4" Diameter Fuses

| Catalog Number | End Stop | Clip Mat.** | Finish | Dimensions (Inches) | | | | | Hole Dia. | Ref. |
|----------------|----------|-------------|------------|---------------------|-------------|------------|-----------|-------|-----------|------|
| | | | | B (To End Stop) | C (Contact) | D (Height) | E (Width) | | | |
| 5681-01 | No | BeCu | Silver | † | 0.265 | 0.41 | 0.32 | 0.132 | Fig. 2 | |
| 5681-08 | | Spg. Br. | Nickel | | | | | | | |
| 5681-15-R | | Spg. Br. | Bright Tin | | | | | | | |
| 5682-01 | Yes | BeCu | Silver | 0.108 | 0.262 | 0.41 | 0.32 | 0.132 | Fig. 1 | |
| 5682-02 | | BeCu | Silver | | | | | | | |
| 5682-11-R | | BeCu | Bright Tin | 0.131 | | | | | | |
| 5682-41-R | | Spg. Br. | Bright Tin | 0.106 | | | | | | |
| 5682-44-R | | Spg. Br. | Bright Tin | 0.132 | | | | | | |

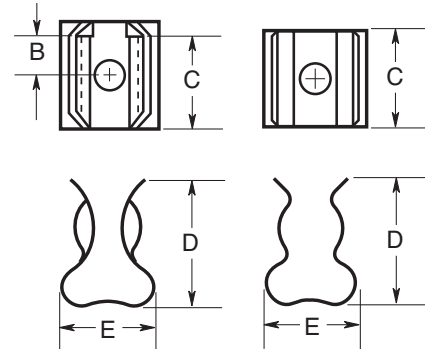


Figure 1

Figure 2

PC Board Fuseclips for 1/32", 13/32" and 1/16" Diameter Fuses

5672 & 5674 Series

PCB Fuseclips with Mounting Holes For 1/32" Diameter Fuses

| Catalog Number | End Stop | Clip Mat.** | Finish | Dimensions (Inches) | | | | | Ref. |
|----------------|----------|-------------|------------|---------------------|-------------|------------|-----------|-----------|--------|
| | | | | B (To End Stop) | C (Contact) | D (Height) | E (Width) | Hole Dia. | |
| 5672-11 | No | Spg. Br. | Bright Tin | † | 0.362 | 0.52 | 0.38 | 0.172 | Fig. 2 |
| 5674-01 | Yes | BeCu | Silver | 0.168 | 0.356 | 0.52 | 0.38 | 0.172 | Fig. 1 |
| 5674-10 | | BeCu | Bright Tin | | | | | | |
| 5674-41 | | Spg. Br. | Bright Tin | | | | | | |

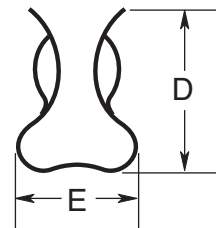
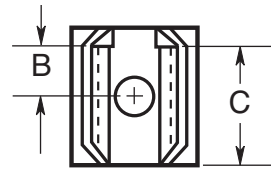


Figure 1

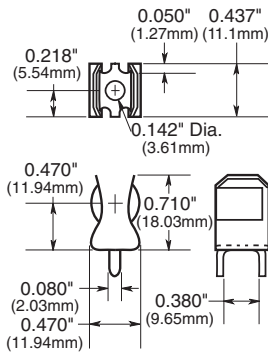
1A3400 Series***

For 13/32" Diameter Fuses

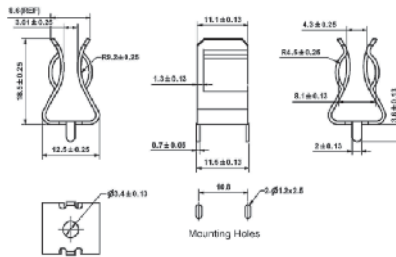
With End Stops & Straight Leads



Dimensional Data



1A3400-09 & 1A3400-10



1A3400-12

Specifications:

| Catalog Number | Clip Material | Finish | Amp Rating |
|----------------|------------------|------------|------------|
| 1A3400-09 | Spring Bronze | Bright Tin | 20A Max. |
| 1A3400-10 | Beryllium Copper | Silver | 30A Max. |
| 1A3400-12 | Spring Brass | Bright Tin | 15A Max. |

***For RoHS compliant version add "-R" option code suffix to part number.

5956 & 5960 Series

PCB Fuseclips with Mounting Holes For 1/32" Diameter Fuses

| Catalog Number | End Stop | Clip Mat.** | Finish | Dimensions (Inches) | | | | | Ref. | |
|----------------|----------|-------------|-------------|---------------------|-------------|------------|-----------|-----------|--------|-------|
| | | | | B (To End Stop) | C (Contact) | D (Height) | E (Width) | Hole Dia. | | |
| 5956-16 | No | Spg. Br. | Bright Tin | † | 0.312 | 0.71 | 0.47 | 0.172 | Fig. 2 | |
| 5960-07 | Yes | BeCu | Silver | 0.168 | 0.387 | 0.71 | 0.47 | 0.196 | Fig. 1 | |
| 5960-09 | | BeCu | Silver | | | | | | | 0.20 |
| 5960-44 | | Spg. Br. | Nickel | | | | | | | 0.20 |
| 5960-51 | | Spg. Br. | Bright Dip* | | | | | | | 0.168 |
| 5960-53 | | Spg. Br. | Bright Dip* | | | | | | | 0.20 |
| 5960-61-R | | Spg. Br. | Bright Tin | | | | | | | 0.168 |
| 5960-62-R | | Spg. Br. | Bright Tin | | | | | | | 0.168 |
| 5960-63-R | | Spg. Br. | Bright Tin | | | | | | | 0.20 |
| 5960-64-R | | Spr. Br. | Bright Tin | | | | | | | 0.20 |

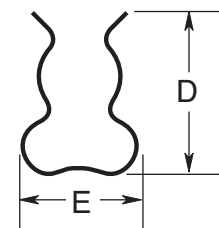
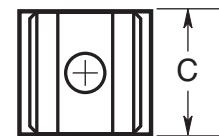


Figure 2

5591 & 5592 Series

PCB Fuseclips with Mounting Holes For 1/16" Diameter Fuses

| Catalog Number | End Stop | Clip Mat.** | Finish | Dimensions (Inches) | | | | | Ref. |
|----------------|----------|-------------|-------------|---------------------|-------------|------------|-----------|-----------|--------|
| | | | | B (To End Stop) | C (Contact) | D (Height) | E (Width) | Hole Dia. | |
| 5591-42 | Yes | Spg. Br. | Bright Dip* | 0.26 | 0.51 | 0.89 | 0.60 | 0.172 | Fig. 1 |
| 5591-52-R | | Spg. Br. | Bright Tin | | | | | | |
| 5592-01 | No | BeCu | Silver | 0.252 | 0.56 | 0.875 | 0.60 | 0.20 | Fig. 2 |



* Bright Dip is actually treated bare metal with no plating.
 ** Spg. Br. — Spring Bronze; BeCu — Beryllium Copper.
 † Hole in center of both clip and contact area.