

Regulator for 2 MPa

Series ARX20

2.0 MPa compatible, piston type regulator



- Compatible with inlet supply pressure of 2.0 MPa
- Employs a handle shape for easy operation
- Compact type (face to face dimensions 35 mm, overall length 80 mm)
- Ideal for discharge pressure adjustment on a small compressor
- Piston type
- Ideal for pressure adjustment of air blowing applications
- 3 out ports for convenient use

ARJ

AR425
to 935

AMR

ARM

ARP

IR

IRV

VEX1□

SRH

SRP

SRF

ARX20

VCHR

ITV

IC

PVQ

VEF
VEP

VER

VEA

VY2

VBA
VBAT

AP100

Regulator for 2 MPa

Series ARX20

How to Order

ARX2 **0** — **01** **Option**

Regulator for 2 MPa

Regulating pressure range

0	0.05 to 0.85 MPa
1 Note 1)	0.05 to 0.30 MPa

Thread type

Nil	Rc
N	NPT
F	G

Port size

01	1/8
02	1/4

Option

Nil	None		
B	Bracket	1348112	
G	Pressure gauge Note 2)	ARX20- Nil F <input type="checkbox"/>	G36-10-01
			G46-10-02
		ARX21- Nil F <input type="checkbox"/>	G36-4-01
			G46-4-02
		ARX20-N <input type="checkbox"/>	G36-P10-N01
			G46-P10-N02
P	Panel nut	ARX21-N <input type="checkbox"/>	G36-P4-N01
			G46-P4-N02
		1348110A	

Option combination numbers

B	BG	* Panel nut is also included with B.
G	GP	
P		

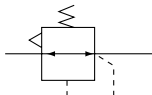
Note 1) Compared with ARX20, ARX21 is the product which adjusting spring has only been changed.
It is not the product, which does not allow the pressure more than 0.3 MPa.

Note 2) Pressure gauges are shipped together, (but not assembled).

Specifications



JIS Symbol

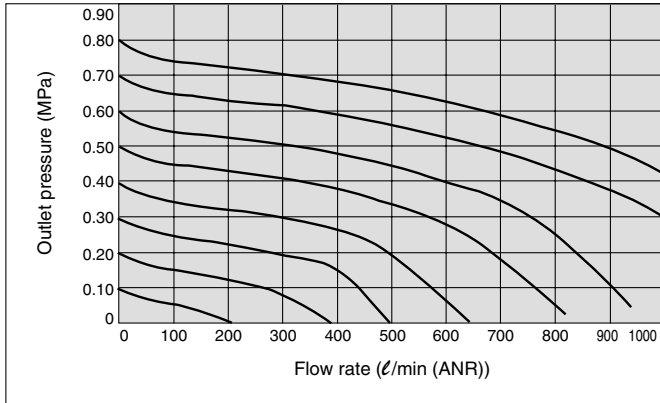


Model	ARX20	
Regulator construction	Piston type regulator	
Relief mechanism	Relieving type	
Port size	Rc 1/8, 1/4	
Pressure gauge port size	Rc 1/8, 1/4	
Proof pressure	3.0 MPa	
Maximum operating pressure	2.0 MPa	
Regulating pressure range	Standard type	0.05 to 0.85 MPa
	Low pressure type	0.05 to 0.3 MPa
Fluid	Air	
Ambient and fluid temperature	-5 to 60°C (No freezing)	
Mass	110 g	

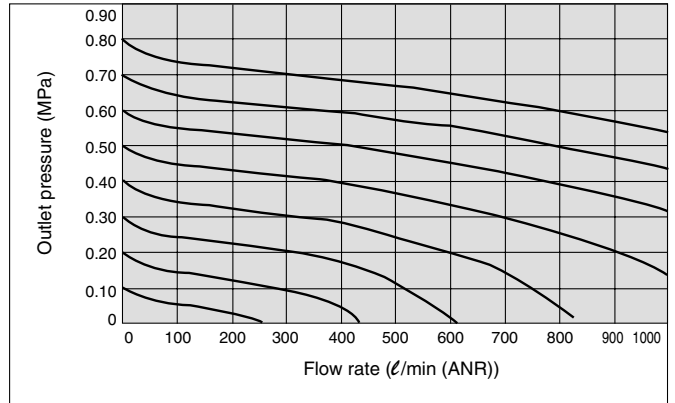
Flow Characteristics (Representative Value)

Inlet pressure: 2.0 MPa

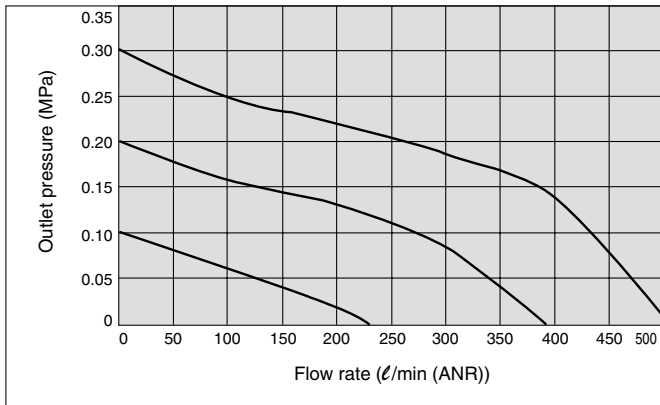
ARX20-01



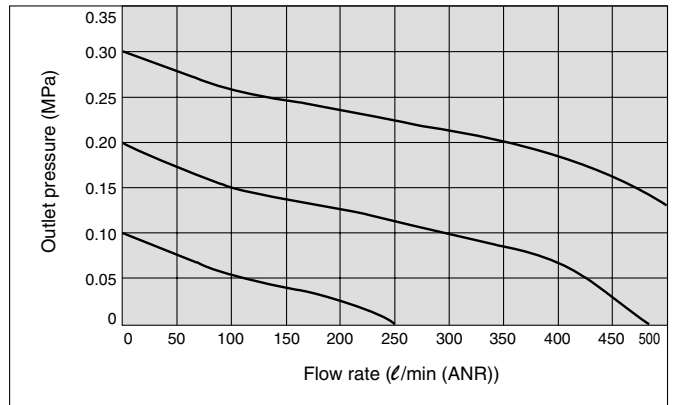
ARX20-02



ARX21-01



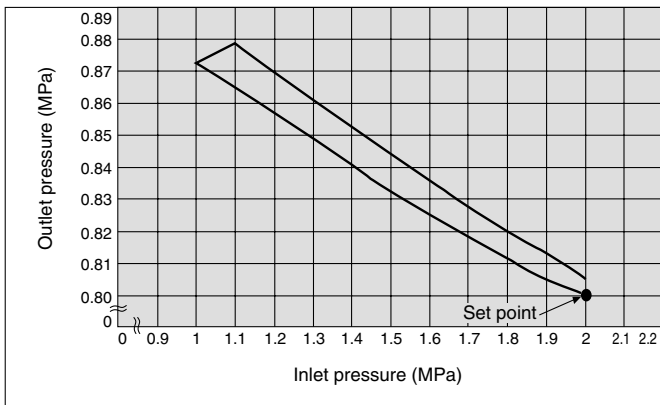
ARX21-02



Flow Characteristics (Representative Value)

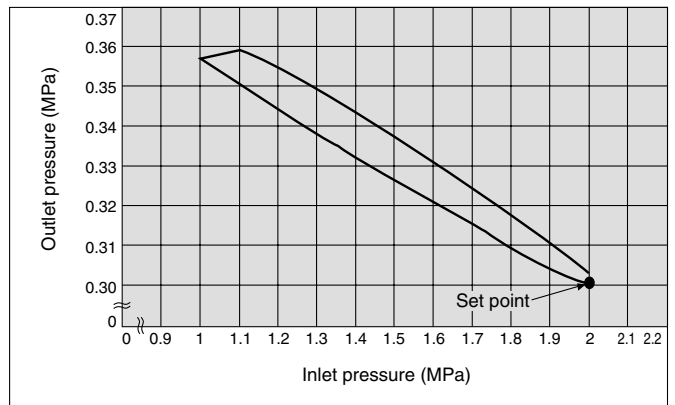
Inlet pressure: 2.0 MPa
Outlet pressure: 0.8 MPa
Flow rate: 60 ℓ/min (ANR)

ARX20



Inlet pressure: 2.0 MPa
Outlet pressure: 0.3 MPa
Flow rate: 60 ℓ/min (ANR)

ARX21



ARJ

AR425 to 935

AMR

ARM

ARP

IR

IRV

VEX1□

SRH

SRP

SRF

ARX20

VCHR

ITV

IC

PVQ

VEF
VEP

VER

VEA

VY2

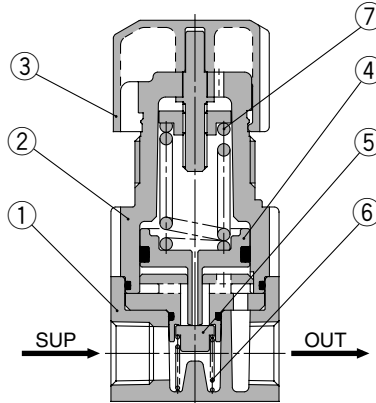
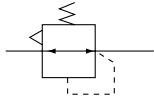
VBA
VBAT

AP100

Series ARX20

Construction

JIS Symbol



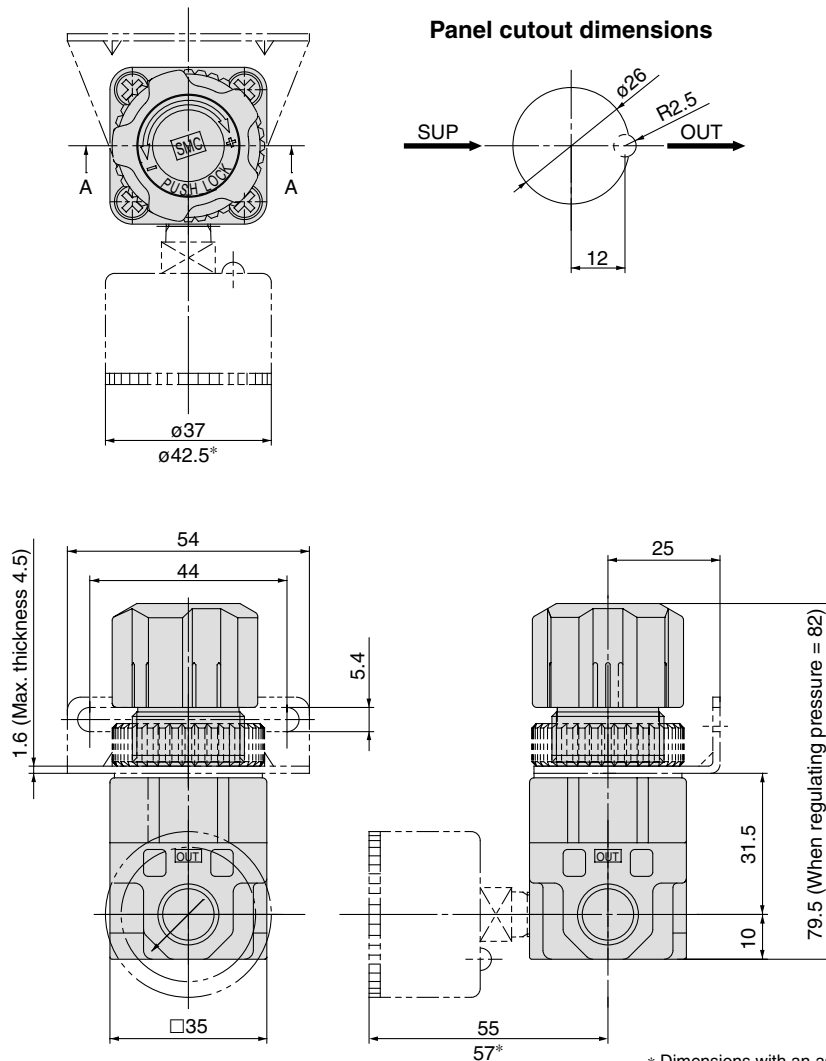
Component Parts

No.	Description	Material	Note
1	Body	ADC	Chromate treated
2	Bonnet	POM	

Replacement Parts

No.	Description	Material	Part no.
3	Handle	POM	1348102#1
4	Piston assembly	POM, NBR	1348104A
5	Valve	Brass, NBR	1348114#1
6	Valve spring	Stainless steel	1348109
7	Adjusting spring	Steel wire	1348108 (For 0.85 MPa)
			1348108-1 (For 0.3 MPa)

Dimensions



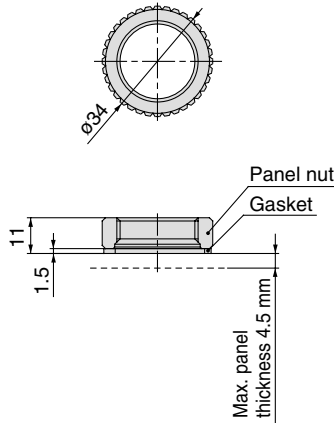
* Dimensions with an asterisk (*) are for the pressure gauge G46.

Option

Panel Nut

Part no.	1348110A
Material	POM, NBR (Gasket)

Dimensions

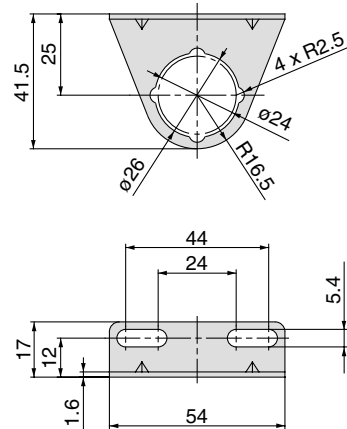


* Install the gasket underneath the panel and bracket (bonnet side).
Tighten the panel nut by hand without the use of tools.

Bracket

Part no.	1348112
Material	SPCC (Electrophoretic coating)

Dimensions



⚠ Precautions

- Be sure to read before handling.
- Refer to front matters 42 and 43 for Safety Precautions and pages 287 to 291 for Precautions on every series.

Design and Selection

⚠ Warning

- 1. Confirm the set pressure range.**
Be sure to install safety devices in locations where output pressure above the set pressure range could lead to damage or malfunction of equipment in the outlet side.
- 2. Residual pressure relief without inlet pressure.**
When the inlet pressure is relieved with the outlet pressure in a low pressure setting state, it may not be possible to eliminate the outlet pressure (residual pressure relief). Provide a residual pressure relief circuit when reliable elimination of the outlet pressure must be performed.

Mounting

⚠ Caution

- 1. To set the correct pressure**
 - 1) Set the pressure by increasing from a lower pressure to the desired setting, and lock the handle after the pressure is set.
 - 2) Make connections after confirming the "SUP" mark which indicates the air inlet. Reversed connections will cause malfunction.

ARJ

AR425
to 935

AMR

ARM

ARP

IR

IRV

VEX1□

SRH

SRP

SRF

ARX20

VCHR

ITV

IC

PVQ

VEF
VEP

VER

VEA

VY2

VBA
VBAT

AP100