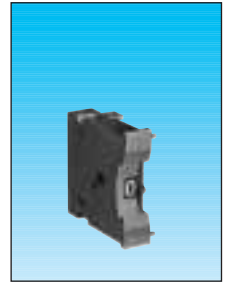


Thumbwheel switches



Electrical characteristics

Assigned working voltage	0.1 → 50 V _~
	0.1 → 50 V ₌₌
Nominal load current	0.1 → 100 mA
Max. non-switchable current	1 A
Max. internal resistance	200 m Ω
Min. insulation resistance	10 ⁵ M Ω
- between tracks	600 V _~
- between tracks and grounds	2500 V _~

Mechanical characteristics

Electrical durability (operations)	10 ⁶
Vibration resistance	2000/10
according to NFC 20616	

Environmental characteristics

Ambient operating temperature	- 25 + 70°C
Ambient storage temperature	- 40 + 85°C

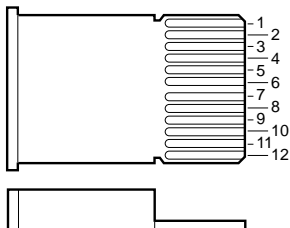
Standard codes

		M01										
Type of tracks		C	0	1	2	3	4	5	6	7	8	9
A	M01*	1	11	10	9	8	7	6	5	4	3	2
	M01	12	11	10	9	8	7	6	5	4	3	2
B	0	●										
	1	●	●									
	2	●		●								
	3	●			●							
	4	●				●						
	5	●					●					
	6	●						●				
	7	●							●			
	8	●								●		
	9	●									●	

		M02							
Type of tracks		C	1	2	4	8			
A	M02*	1	9	7	5	3			
	M02	9	8	7	6	5			
B	0	●							
	1	●							
	2	●	●						
	3	●		●					
	4	●			●				
	5	●				●			
	6	●					●		
	7	●						●	
	8	●							●
	9	●							

Output layout

A - Position on printed circuit
 B - Dial setting
 * For 84 214 only



Features

Compatible with display module	—
Front mounting	●

Types

Standard 10-position module	84 210 0
-----------------------------	-----------------

Standard codes

Decimal	M 01	●
BCD	M 02	●

Circuits

Short	C	●
-------	----------	---

Case

Grey	G	Black	N	●
------	----------	-------	----------	---

Connections

For soldering or for connector	S	●
--------------------------------	----------	---

Mounting accessories

Pair of end caps (with clips)			
	Grey	JE/G	79 211 709
	Grey	MI/G	79 211 738
Separator module (with clips)			
	Grey	MS/G	79 211 752

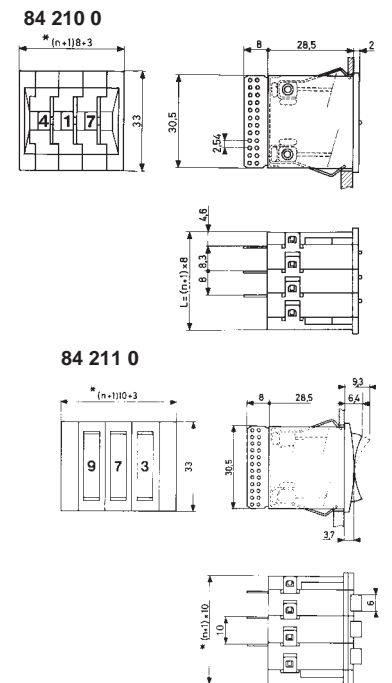
Connectors

Solder terminals	W2	25 625 493
Wire-wrap terminals with lugs	X2	25 625 494
Wire-wrap terminals without lugs	X2	25 625 492
For soldering to printed circuit	X3	25 625 495

Mechanical characteristics

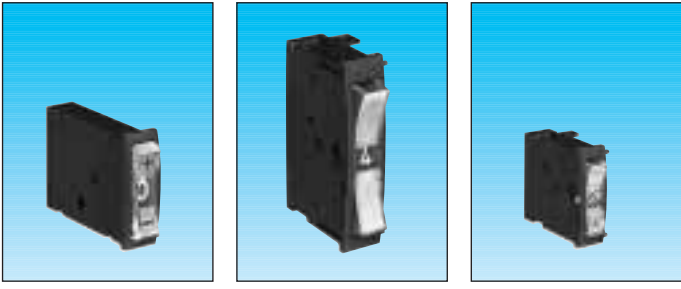
Operating force	N	3
Digit dimensions (H x L)	mm	4.5 x 2.8
Weight	g	5.5

Dimensions



Other information

For other versions, codes, colours, cases, wheels : please consult us.



Miniature rocker Large rocker Subminiature rocker

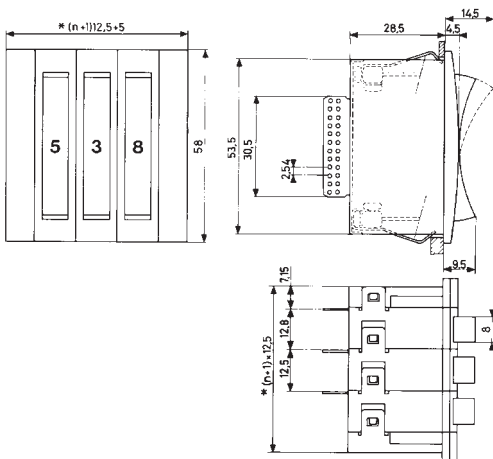
84 217 — —

84 211 0 84 212 0 84 214 0

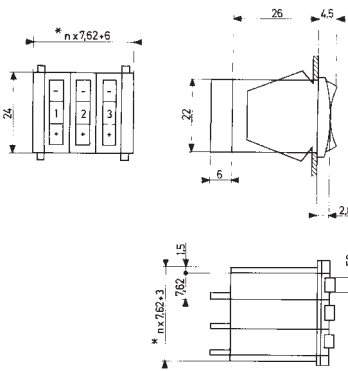
79 211 823	79 211 923	79 214 282
79 211 814	79 211 914	79 214 219
79 211 824	79 211 924	
25 625 493	25 625 493	
25 625 494	25 625 494	
25 625 492	25 625 492	
25 625 495	25 625 495	

5	4	5
4.5 x 2.8	6 x 3.75	4 x 2.5
7.5	14	3.5 → 4

84 212 0



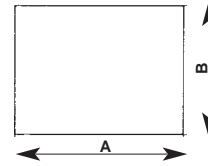
84 214 0



Output
Pitch 2 for decimal
Pitch 5 for BCD

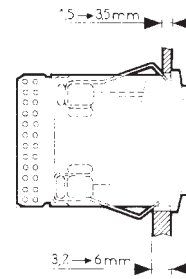
* n = number of modules
J = clearance : 1 mm for 1 ≤ n ≤ 10
1.5 mm for 11 ≤ n ≤ 20

Panel cut-out



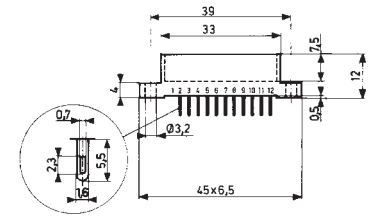
	A	B
84 210	(n+1) 8 + J	31
84 211	(n+1) 10 + J	31
84 212	(n+1) 12.5 + J	54
84 214	(nx7.62) + 35	22.5

Panel thickness

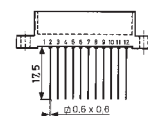


Connector dimensions

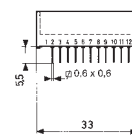
25 625 493



25 625 492 25 625 494



25 625 495



To order, specify :

- | | |
|----------------------|----------------------|
| 1 Type | 2 Code |
| 3 Connections | 4 Accessories |
| | 5 Connectors |

Standard products,
non stocked

Example : Selector switch 84 210 0 M 01 C G N S - accessories 79 211 709 - connector 25 625 494