

## VARIOSUB RJ45/IP67 Plug Connector

---

VARIOSUB-RJ45 was developed for using RJ45 plug connectors in harsh industrial environment. With it, devices for Industrial Ethernet can also utilize the standard plug connectors of the IT world.

The VARIOSUB-RJ45/IP67 plug connector is suitable for use on devices, infrastructural components and control cabinets. It satisfies the requirements of IEC 60332-1 for use in heavy duty areas and is suitable for Fast Ethernet transmission at 100 Mbit/s in acc. with Cat 5. Female inserts with sockets on both sides and with cable connection as well as a mounting frame are available for the equipment side, while there is a hood and a male insert for the conductor side. The female and male inserts are completely shielded to allow reliable data transmission where electro-magnetic interference is present.

In addition, commercially available male inserts can still be used. In this case, there is no need for adapter cables or other special solutions during startup and service.

The hood with its Push-Pull locking system safeguards the connection against mechanical stress, shocks and vibration. Also, it makes it possible to use cables with a diameter from 5 to 8.5 mm and a core cross section from AWG 24 to AWG 26 as solid or stranded conductors.

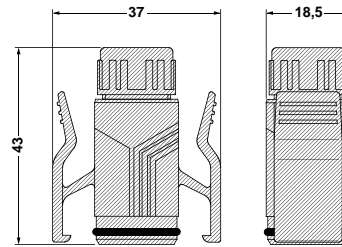
This locking method saves space and provides ease of accessibility. It can be operated without tools and, when locked, provides the IP 67 degree of protection.



# VARIOSUB RJ45/IP67 Hood



Description	Type	Order No.	Pcs./Pkt.
<b>Plastic housing,</b> with Push-Pull-locking to the mounting frame	<b>VS-8-T-RJ45/IP67</b>	<b>16 88 69 6</b>	<b>5</b>
<b>Technical data</b>			
<b>Temperature rang</b>	[°C]	-10 to +85	
<b>Material</b>		PA	
<b>Cable diameter</b>	[mm]	5 – 8.5	
<b>Inflammability class in acc. with UL 94</b>		V0	



Dimensional drawing: VS-8-T-RJ45/IP67

# VARIOSUB RJ45 Male Insert



Description	Type	Order No.	Pcs./Pkt.
<b>Male insert RJ45,</b> 8 pos., with IDC connection technology	<b>VS-8-ST-RJ45</b>	<b>16 88 57 3</b>	<b>5</b>
<b>Accessories</b>			
<b>Crimping tool,</b> without die suitable die for VARIOSUB RJ45 male insert	<b>CRIMPFOX-LC</b> <b>CRIMPFOX-LC-RJ 45 S</b>	<b>12 06 69 6</b> <b>12 07 42 0</b>	<b>1</b>
<b>Technical data</b>			
<b>No. of pos.</b>		8	
<b>Nominal voltage/ Nominal current</b>	[V] / [A]	60 / 1	
<b>Transmission rate</b>	[Mbit/s]	100	
<b>Surge voltage category</b>		II	
<b>Contamination class</b>		2	
<b>Core cross section</b>	[mm <sup>2</sup> ] / AWG	0.14 - 0.25 / 24 - 22	
<b>Core diameter</b>	[mm]	≤ 1	
<b>Inflammability class in acc. with UL 94</b>		V0	

# VARIOSUB RJ45

## Female inserts



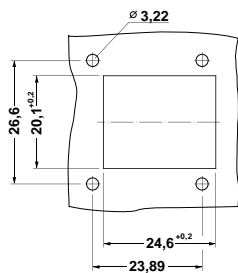
Description		Type	Order No.	Pcs./Pkt.
Female insert RJ45, 8 pos.	socket on socket socket on cable	VS-8-BU-RJ45/BU VS-8-BU-RJ45/KA	16 89 06 4 16 89 07 7	5
<b>Technical data</b>				
No. of pos.			8	
Nominal voltage/ Nominal current	[V] / [A]		60 / 1	
Transmission rate	[Mbit/s]		100	
Surge voltage category			II	
Contamination class			2	
Core cross section	[mm <sup>2</sup> ] / AWG		0.14 - 0.25 / 24 - 22	
Core diameter	[mm]		≤ 1	
Cable diameter	[mm]		5 - 6.5	
Inflammability class in acc. with UL 94			V0	

# VARIOSUB RJ45/IP 67

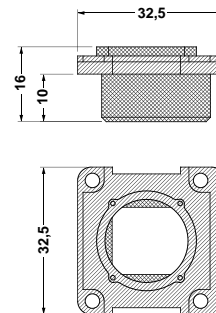
## Mounting frame



Description		Type	Order No.	Pcs./Pkt.
Mounting frame RJ45, without fixing screws for modular female inserts	1 slot	VS-8-A-RJ45/MOD-1-IP67	16 89 08 0	5
<b>Technical data</b>				
Material			PA	
Temperature range	[°C]		-10 to +85	
Inflammability class in acc. with UL 94			V0	



Panel cutout: VS-8-A-RJ45/MOD-1-IP 67



Dimensional drawing: VS-8-A-RJ45/MOD-1-IP 67

<http://www.phoenixcontact.com>

TNR:5125443-00

© Phoenix Contact 30.10.01