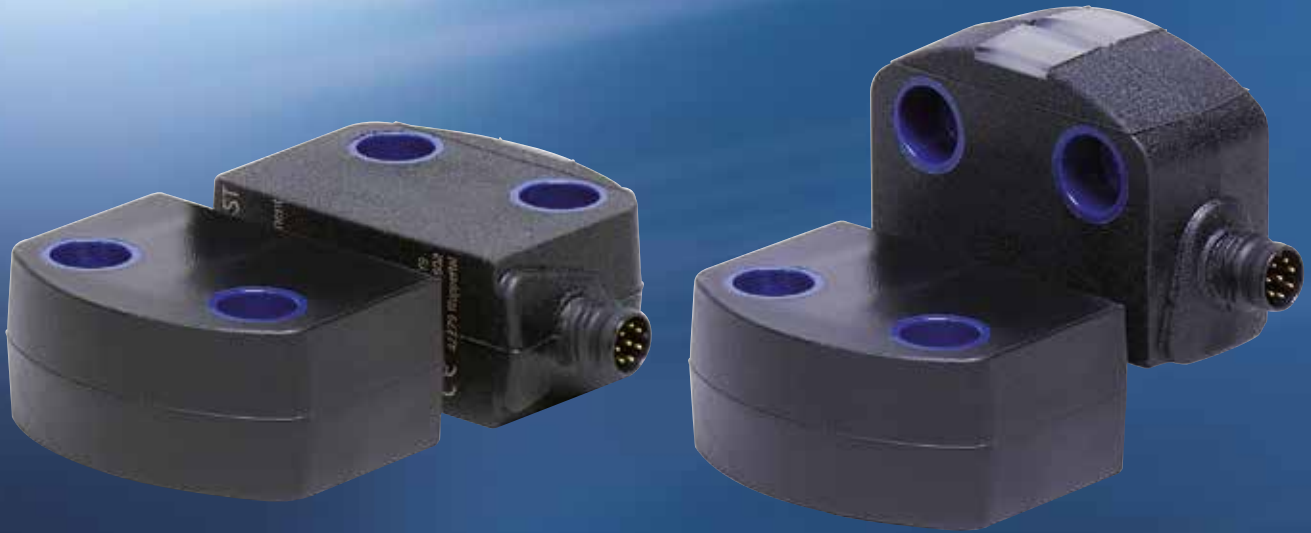


RFID - safety - sensor

RSS260



 **SCHMERSAL**
Safe solutions for your industry



Versatility in a compact design

The RFID safety sensor RSS260 is designed for applications in safety circuits and is used for monitoring the position of movable separating safety guards. In addition to its compact design and high protection against tampering, it is convincing by its universal suitability for removable, rotatable and sliding protection equipment.

The advantages at a glance:

- High protection against tampering through RFID technology
- Compact design and subtle, elegant design
- Easy installation without additional angles
- Universal application through different targets for typical installation situations
- Repeated universal or individual coding
- Preservation of safety levels and diagnostic capability even when connected in series
- Future with integrated AS interface


Remain flexible - because alternative target designs are available, the RSS260 is suitable for both installations on aluminium profiles, as well as for use on many different door sizes like the frequently used Plexiglas doors and panels. You can choose the appropriate sensor-target combination for your application, depending on the door and the door direction of movement. Even with the coding you have all the freedom you need and you can use the teach function as often as you want or code individually. Thanks to RFID technology, a high tamper protection is ensured despite the flexibility.

The RSS260 is compatible with the following targets:

RST260-1: Swivel door with frame, no interfering contour of the door cutout

RST16-1: Plexiglas door: flat design, discreet appearance

RST-U-2: Sliding door: Smallest size, embedded in Plexiglas

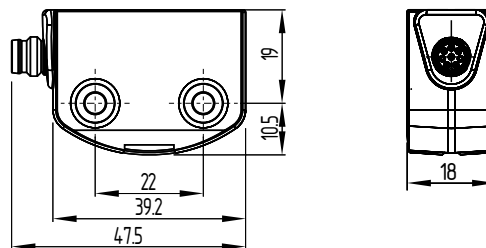
Technical data	
Standards:	IEC 60947-5-3; IEC 61508; EN ISO 13849-1
Switching distance:	12 mm
Housing material:	thermoplastic
Serial diagnostic:	Yes
Number of inputs:	2
Number of outputs:	2 x OSSD, 1 x Diagnostic
Electrical characteristics	
Operating voltage:	24 VDC (PELV)
Power consumption:	0.6 A
max. switching capacity V/I:	24 VDC / 250 mA
Mechanical data	
Connection:	Connector
Cable section:	0.14 mm ²
Ambient conditions	
Ambient temperature:	-25 °C ... +65 °C
Protection class:	IP65 / IP67
Dimensions H x W x D:	40 x 18 x 29.5 mm
Safety classification	
PL:	e
SIL:	3
Approvals:	

Ordering code:

Dimensional drawing Safety sensor

RSS260-①-②-ST

No.	Option	Description
①		Standard coding
	I1	Individual coding
	I2	Individual coding, re-teaching enabled
②	D	With diagnostic output
	SD	With serial diagnostic function



RSS260

Actuator diversity in typical installation situations



RST260-1

Swivel door with frame,
no interfering contour of the door cutout



RST16-1

Plexiglas door: flat design, discreet appearance



RST-U-2

Sliding door: Smallest size, embedded in
Plexiglas



The Schmersal Group

For many years the privately owned Schmersal Group has been developing and manufacturing products to enhance occupational safety. What started out with the development and manufacture of a very wide variety of mechanical and non-contact switchgear has now become the world's largest range of safety systems and solutions for the protection of man and machine. Over 1,500 employees in more than 50 countries around the world are developing safety technology solutions in close cooperation with our customers, thus contributing to a safer world.

Motivated by the vision of a safe working environment, the Schmersal Group's engineers are constantly working on the development of new devices and systems for every imaginable application and requirement of the different industries. New safety concepts require new solutions and it is necessary to integrate new detection principles and to discover new paths for the transmission and evaluation of the information provided by these principles. Furthermore, the set of ever more complex standards, regulations and directives relating to machinery safety also requires a change in thinking from the manufacturers and users of machines.

These are the challenges which the Schmersal Group, in partnership with machinery manufacturers, is tackling and will continue to tackle in the future.

Product ranges



Safe switching and monitoring

- Guard door monitoring safety switches
- Command devices with safety function
- Tactile safety devices
- Optoelectronic safety devices

Safe signal processing

- Safety monitoring modules
- Safety controllers
- Safety bus systems

Automation

- Position detection
- Command and signalling devices

Industries



- Elevators and escalators
- Packaging
- Food
- Machine tools
- Heavy industry

Services



- Application advice
- CE conformity assessment
- Risk assessment in accordance with the Machinery Directive
- Stop time measurements
- Training courses

Competences



- Machine safety
- Automation
- Explosion protection
- Hygienic design

Precautions have been taken to assure accuracy of the information in this catalogue. Typographic or pictorial errors that are brought to our attention will be corrected in subsequent issues.

www.schmersal.com



 **SCHMERSAL**
Safe solutions for your industry



3.000 / L+W / 11.2013 / Teile-Nr. 103006103 / Ausgabe 01

Courtesy of Steven Engineering, Inc. - (800) 258-9200 - sales@steveneng.com - www.stevenengineering.com