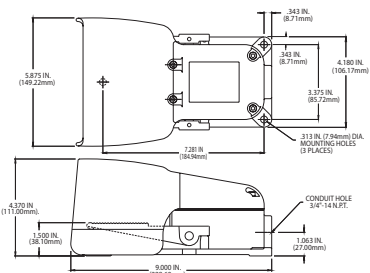


## FULL SHIELD

CATALOG NUMBER: 534-Z24

- Cast Aluminum Alloy construction
- Resistant to impact
- Opening designed to easily accommodate most footwear
- Standard color is high visibility alert orange
- Special variations available in production quantities
- Entire foot switch is covered
- Accepts wide range of foot switch models

Size (HxWxD):	4.33 x 5.91 x 8.72 In.
Weight:	2 lb.

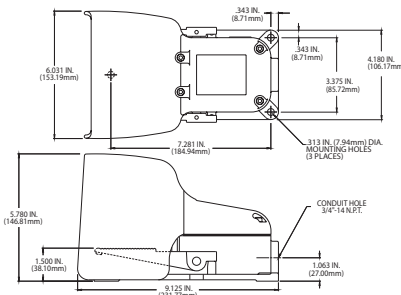


## "O" SHIELD

CATALOG NUMBER: 534-A25

- Cast Aluminum Alloy construction
- Resistant to impact
- Opening designed to easily accommodate most footwear
- Standard color is high visibility alert orange
- Special variations available in production quantities
- Entire foot switch is covered
- Accepts wide range of foot switch models

Size (HxWxD):	4.97 x 5.91 x 8.72 In.
Weight:	2.25 lb.

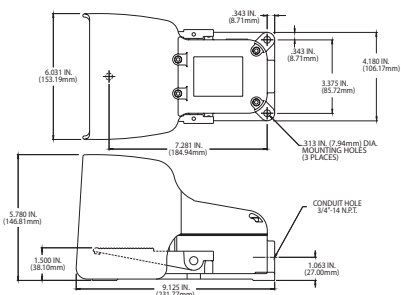


## "OX" SHIELD

CATALOG NUMBER: 534-B25

- Cast Aluminum Alloy construction
- Resistant to impact
- Opening designed to easily accommodate most footwear
- Standard color is high visibility alert orange
- Special variations available in production quantities
- Entire foot switch is covered
- Accepts wide range of foot switch models

Size (HxWxD):	5.78 x 5.91 x 8.72 In.
Weight:	2.50 lb.



# Accessories - Awareness Cover

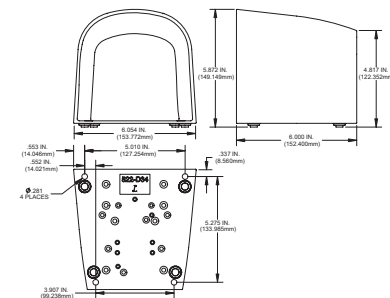
## AWARENESS COVER

CATALOG NUMBER: N/A



- Alerts you to the location of the foot switch
- Watch for tripping hazards
- Accepts wide range of foot switch models
- Resistant to impact
- Ergonomic design to accommodate most footwear
- Non-corrosive material
- Exceptional value and quality
- Standard color is high visibility alert orange
- Special variations available in production quantities
- Complete with non-skid feet
- Opening is large and easy to access
- Versatile and Lightweight
- Entire foot switch is covered

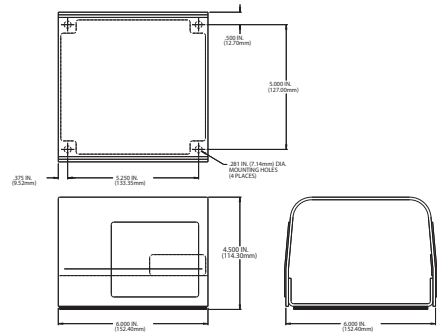
Size (HxWxD):	5.72 x 6.05 x 5.28 In.
Weight:	8.5 oz.





## FULL GUARD CATALOG NUMBER: 522-B14

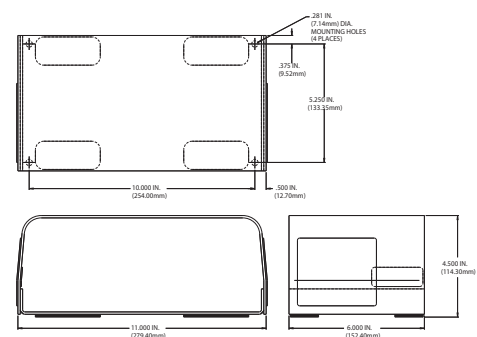
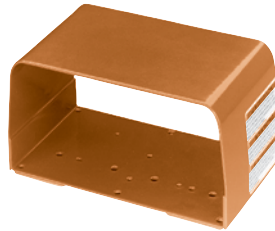
- Heavy gage rolled steel and welded construction
- Resistant to impact
- Opening designed to easily accommodate most footwear
- Standard color is high visibility alert orange
- Special variations available in production quantities
- Complete with non-skid feet
- Entire foot switch is covered
- Accepts wide range of foot switch models



Size (HxWxD):	4.5 x 6.0 x 6.0 In.
Weight:	4 lbs.

## FULL TWIN GUARD CATALOG NUMBER: 522-B12

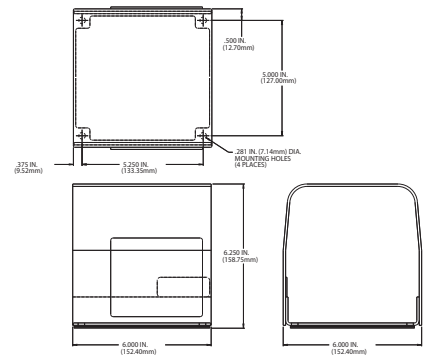
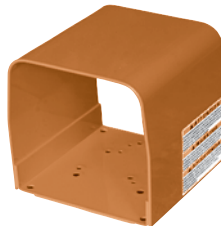
- Heavy gage rolled steel and welded construction
- Resistant to impact
- Opening designed to easily accommodate most footwear
- Standard color is high visibility alert orange
- Special variations available in production quantities
- Complete with non-skid feet
- Entire foot switch is covered
- Accepts wide range of foot switch models



Size (HxWxD):	4.5 x 11.0 x 6.0 In.
Weight:	7 lbs.

## SINGLE OVERSIZED GUARD CATALOG NUMBER: 522-F28

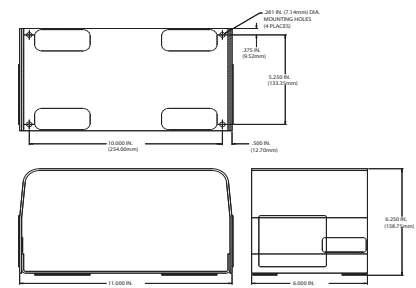
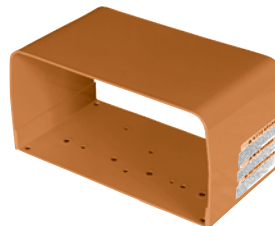
- Heavy gage rolled steel and welded construction
- Resistant to impact
- Opening designed to easily accommodate protective footwear
- Standard color is high visibility alert orange
- Special variations available in production quantities
- Complete with non-skid feet
- Entire foot switch is covered
- Accepts wide range of foot switch models



Size (HxWxD):	6.25 x 6.0 x 6.0 In.
Weight:	5 lbs.

## OVERSIZED TWIN GUARD CATALOG NUMBER: : 522-D28

- Heavy gage rolled steel and welded construction
- Resistant to impact
- Opening designed to easily accommodate protective footwear
- Standard color is high visibility alert orange
- Special variations available in production quantities
- Complete with non-skid feet
- Entire foot switch is covered



Size (HxWxD):	6.25 x 11.0 x 6.0 In.
Weight:	7 lbs.



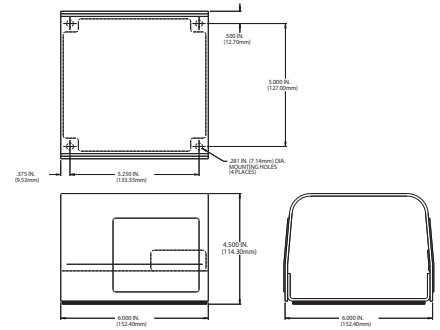
# Accessories - Guards

## FULL GUARD STAINLESS STEEL

CATALOG NUMBER: 522 - K26



- Heavy gage Brushed Stainless Steel and welded construction
- Resistant to impact
- Opening designed to easily accommodate protective footwear
- Special variations available in production quantities
- Complete with non-skid feet
- Entire foot switch is covered
- Accepts wide range of foot switch models



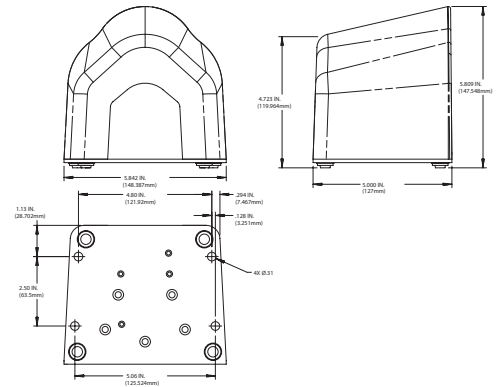
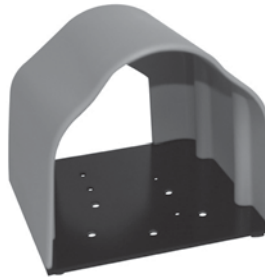
Size (HxWxD):	4.5 x 6.0 x 6.0 In.
Weight:	4 lbs.

## MEDICAL GUARD

CATALOG NUMBER: 997-Z26



- Cast Aluminum Housing with steel base plate construction
- Resistant to impact
- Opening designed to easily accommodate protective footwear
- Special variations available in production quantities
- Complete with non-skid feet
- Entire foot switch is covered
- Accepts wide range of foot switch models



Size (HxWxD):	5.5 x 5.0 x 5.85 In.
Weight:	3 lbs.



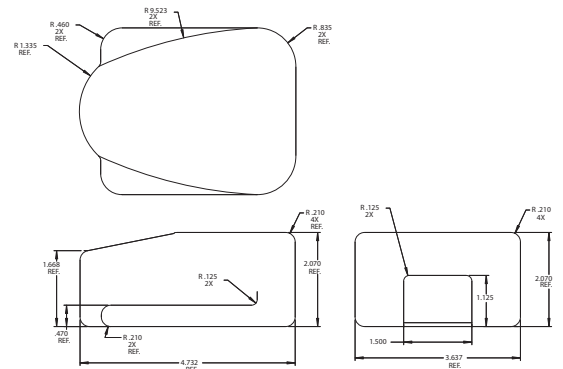
# Accessories - Protective Boot

## PROTECTIVE BOOT

CATALOG NUMBER: 522-N30



- Plastisol PVC material in bright orange
- Easy to apply over Clipper & Clipper 88 foot switches.
- No special tools required
- Prevents materials in wet or dirty environments from entering the housing
- Not available for wide-treadle models.
- Note: Requires Modification when used with Full Guard. Please contact factory for details.



Size (HxWxD):	2.07 x 4.74 x 3.64 In.
Weight:	3.1 oz.