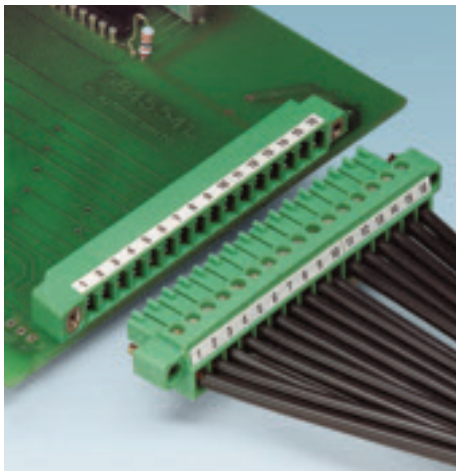


# COMBICON control

## MINI COMBICON connectors, pitches 3.5 or 3.81 and 5.08 mm

### Connector with a screw connection



- Flat design of the MC 1,5 connector range
- Generously dimensioned wiring space
- Plug-in direction parallel to the conductor axis
- Versions with and without a screw flange
- Individual position keying by removing the keying tab and by connecting the keying profile to the header
- Versions with a pull-out aid can be provided; cables can be fixed to the pull-out aid using cable binders
- Higher numbers of positions up to 20 positions can be found at: [www.phoenixcontact.net/searchassistants](http://www.phoenixcontact.net/searchassistants)

#### Note:

In compliance with DIN EN 61984, COMBICON connectors come without switching capacity. During designated use, they must not be plugged in or disconnected when carrying voltage or under load.

#### Dimension b:

3 to 4-pos. = 9.9 mm  
5 to 7-pos. = 17.2 mm  
8 to 9-pos. = 27.9 mm  
≥ 10-pos. = 34.7 mm

\*) Please observe the derating curves. Derating curves of further combination options on request.

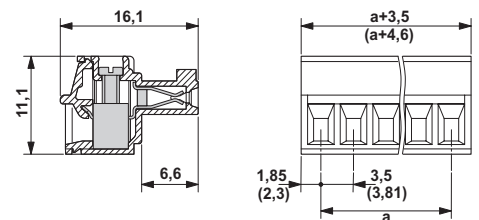


## MC 1,5/...-ST-...

Plugs,  
plug-in direction parallel to the conductor axis



### Dimensional drawing



### Derating curve informations

Derating curves, determined as per  
DIN EN 61984 (VDE 0627):2002-09  
Representation based on DIN EN 60512-5-2:2003-01  
Connected conductor cross-section = 1.5 mm<sup>2</sup>  
Reduction factor = 0.8  
Number of positions = see diagram

Accessories		
For all types	Type	Page
	Marker cards SK 3,5/2,8 or SK 3,81/2,8	487
	Screwdriver SZS 0,4 x 2,5 Order No. 1205037	
Only for a 3.81 mm pitch		
	Insertion bridge EBPL...-3,81	498

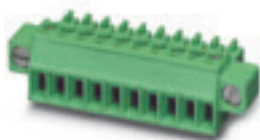
### Technical data

Technical data in accordance with IEC / DIN VDE	
Rated current / conductor cross-section	[A] / [mm <sup>2</sup> ]
Rated insulation voltage with pollution degree 2	[V]
Pitch	[mm]
Connection capacity	
Solid / stranded	[mm <sup>2</sup> ] / [mm <sup>2</sup> ] / AWG
Stranded with ferrules without plastic sleeve	[mm <sup>2</sup> ]
Stranded with ferrules with plastic sleeve	[mm <sup>2</sup> ]
Multi-conductor connection capacity (2 cond. with the same cross section)	
Solid / stranded	[mm <sup>2</sup> ]
Stranded with ferrules without plastic sleeve	[mm <sup>2</sup> ]
Stranded with TWIN ferrules with plastic sleeve	[mm <sup>2</sup> ]
Insulation coordination	
Surge voltage category / pollution degree	III / 3 III / 2 II / 2
Rated insulation voltage	[V]
Rated surge voltage	[kV]
Approval data (UL/CUL)	Use Group
Nominal voltage	[V]
Nominal current	[A]
Connection capacity AWG	AWG
Approval data (CSA)	Use Group
Nominal voltage	[V]
Nominal current	[A]
Connection capacity AWG	AWG
General data	
Stripping length	[mm]
Screw thread	
Tightening torque	[Nm]
Type of insulation material / group of insulation material	
Inflammability class acc. to UL 94	

		8 <sup>1)</sup> / 1.5
		160
		3.5 / 3.81
		0.14 - 1.5 / 0.14 - 1.5 / 28 - 16
		0.25 - 1.5
		0.25 - 0.5
		0.08 - 0.5 / 0.08 - 0.75
		0.25 - 0.34
		0.5 - 0.5
		III / 3 III / 2 II / 2
		160 160 320
		2.5 2.5 2.5
		B C D
		250 - 300
		8 - 8
		30 - 14 - 30 - 14
		B C D
		300 - 300
		8 - 8
		28 - 16 - 28 - 16
		7
		M2
		0.22 - 0.25
		PA / I
		V0

### Ordering data

Type	Order No.	Pcs. / Pkt.
Pitch 3.5 mm, color: green		
MC 1,5/ 2-ST-3,5	1840366	50
MC 1,5/ 3-ST-3,5	1840379	50
MC 1,5/ 4-ST-3,5	1840382	50
MC 1,5/ 5-ST-3,5	1840395	50
MC 1,5/ 6-ST-3,5	1840405	50
MC 1,5/ 7-ST-3,5	1840418	50
MC 1,5/ 8-ST-3,5	1840421	50
MC 1,5/ 9-ST-3,5	1840434	50
MC 1,5/10-ST-3,5	1840447	50
MC 1,5/11-ST-3,5	1840450	50
MC 1,5/12-ST-3,5	1840463	50
MC 1,5/13-ST-3,5	1840476	50
MC 1,5/14-ST-3,5	1840489	50
MC 1,5/15-ST-3,5	1840492	50
MC 1,5/16-ST-3,5	1840502	50
Pitch 3.81 mm, color: green		
MC 1,5/ 2-ST-3,81	1803578	50
MC 1,5/ 3-ST-3,81	1803581	50
MC 1,5/ 4-ST-3,81	1803594	50
MC 1,5/ 5-ST-3,81	1803604	50
MC 1,5/ 6-ST-3,81	1803617	50
MC 1,5/ 7-ST-3,81	1803620	50
MC 1,5/ 8-ST-3,81	1803633	50
MC 1,5/ 9-ST-3,81	1803646	50
MC 1,5/10-ST-3,81	1803659	50
MC 1,5/11-ST-3,81	1803662	50
MC 1,5/12-ST-3,81	1803675	50
MC 1,5/13-ST-3,81	1803688	50
MC 1,5/14-ST-3,81	1803691	50
MC 1,5/15-ST-3,81	1803701	50
MC 1,5/16-ST-3,81	1803714	50



### MC 1,5/...-STF-...

Plugs with screw flange,  
plug-in direction parallel to the conductor axis

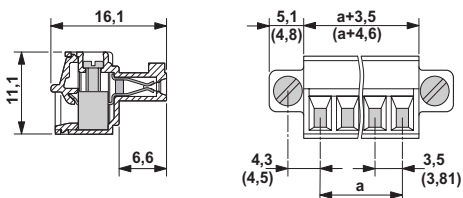


### MC 1,5/...-STZ...

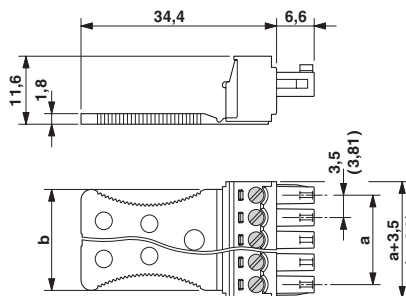
Plugs with pull-out aid,  
plug-in direction parallel to the conductor axis



#### Dimensional drawing

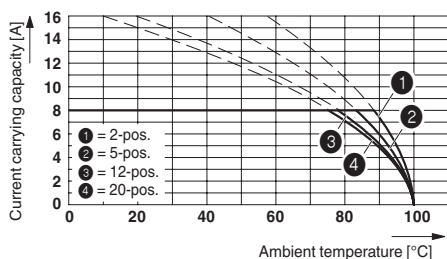


#### Dimensional drawing

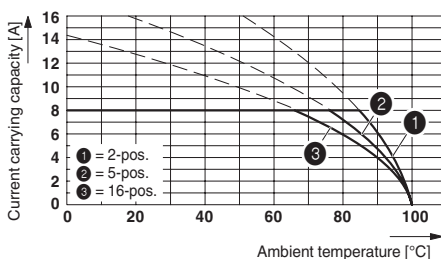


### Representative derating curves of the above-mentioned plugs

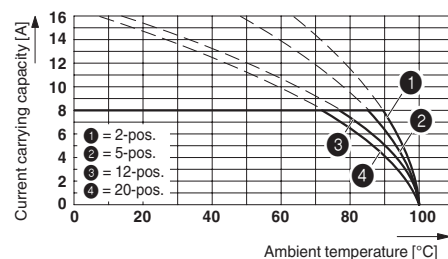
Type: MC 1,5/...-ST-3,81 with MC 1,5/...-G-3,81



Type: MC 1,5/...-ST-3,81 with MCD 1,5/...-G-3,81



Type: MC 1,5/...-ST-3,81 with SMC 1,5/...-G-3,81



#### Ordering data

Type	Order No.	Pcs. / Pkt.
<b>Pitch 3.5 mm, color: green</b>		
MC 1,5/ 2-STF-3,5	1847055	50
MC 1,5/ 3-STF-3,5	1847068	50
MC 1,5/ 4-STF-3,5	1847071	50
MC 1,5/ 5-STF-3,5	1847084	50
MC 1,5/ 6-STF-3,5	1847097	50
MC 1,5/ 7-STF-3,5	1847107	50
MC 1,5/ 8-STF-3,5	1847181	50
MC 1,5/ 9-STF-3,5	1847194	50
MC 1,5/10-STF-3,5	1847204	50
MC 1,5/11-STF-3,5	1847217	50
MC 1,5/12-STF-3,5	1847220	50
MC 1,5/13-STF-3,5	1847233	50
MC 1,5/14-STF-3,5	1847246	50
MC 1,5/15-STF-3,5	1847259	50
MC 1,5/16-STF-3,5	1847262	50
<b>Pitch 3.81 mm, color: green</b>		
MC 1,5/ 2-STF-3,81	1827703	50
MC 1,5/ 3-STF-3,81	1827716	50
MC 1,5/ 4-STF-3,81	1827729	50
MC 1,5/ 5-STF-3,81	1827732	50
MC 1,5/ 6-STF-3,81	1827745	50
MC 1,5/ 7-STF-3,81	1827758	50
MC 1,5/ 8-STF-3,81	1827761	50
MC 1,5/ 9-STF-3,81	1827774	50
MC 1,5/10-STF-3,81	1827787	50
MC 1,5/11-STF-3,81	1827790	50
MC 1,5/12-STF-3,81	1827800	50
MC 1,5/13-STF-3,81	1827813	50
MC 1,5/14-STF-3,81	1827826	50
MC 1,5/15-STF-3,81	1827839	50
MC 1,5/16-STF-3,81	1827842	50

#### Ordering data

Type	Order No.	Pcs. / Pkt.
<b>Pitch 3.5 mm, color: green</b>		
MC 1,5/ 3-STZ1-3,5	1768871	50
MC 1,5/ 4-STZ1-3,5	1767500	50
MC 1,5/ 5-STZ2-3,5	1767623	50
MC 1,5/ 6-STZ2-3,5	1767610	50
MC 1,5/ 7-STZ2-3,5	1768884	50
MC 1,5/ 8-STZ3-3,5	1765599	50
MC 1,5/ 9-STZ3-3,5	1768897	50
MC 1,5/10-STZ4-3,5	1766255	50
MC 1,5/11-STZ4-3,5	1768907	50
MC 1,5/12-STZ4-3,5	1768910	50
<b>Pitch 3.81 mm, color: green</b>		
MC 1,5/ 3-STZ1-3,81	1768923	50
MC 1,5/ 4-STZ1-3,81	1767461	50
MC 1,5/ 5-STZ2-3,81	1768936	50
MC 1,5/ 6-STZ2-3,81	1767694	50
MC 1,5/ 7-STZ2-3,81	1768949	50
MC 1,5/ 8-STZ3-3,81	1768952	50
MC 1,5/ 9-STZ3-3,81	1767665	50
MC 1,5/10-STZ4-3,81	1767209	50
MC 1,5/11-STZ4-3,81	1768965	50
MC 1,5/12-STZ4-3,81	1768978	50
MC 1,5/13-STZ4-3,81	1765557	50