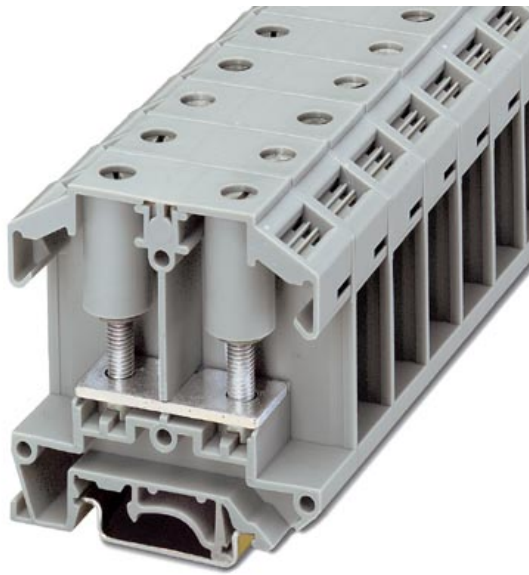


► **General data**



Universal terminal block with bolt connection, cross section: 0.1 - 25 mm², width: 18 mm, color: gray

Order number	0790488
Type	OTTA 25-M5

Barcode number	4017918005597
Unit pack	50 Pcs.
Customs tariff	85369010000

► **Technical data**

General

Number of levels	1
Number of connections	2
Color	gray
Insulating material	PA
Inflammability class acc. to UL 94	V2

Dimensions

Length	60 mm
Width	18 mm
Height NS 35:7,5	64.5 mm
Height NS 35:15	72 mm
Height NS 32	69 mm

Technical data

Rated surge voltage	8 kV
Contamination class	3
Surge voltage category	III
Insulating material group	I
Nominal current I_N	101 A
Nominal voltage U_N	800 V (The nominal voltage applies to insulated cable lugs)

Connection data

Conductor cross section flexible min.	0.1 mm ²
Max. conductor cross section, flexible	25 mm ²
Min. conductor cross section AWG/kcmil	26
Conductor cross section AWG/kcmil max	4
Screw thread	M 5
Tightening torque	2.5 Nm
Hole diameter	5.3 mm

► Certificates

UL

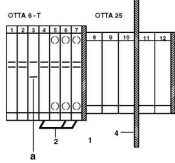
Nominal voltage U_N	600 V
Nominal current I_N	115 A

CSA

Nominal voltage U_N	600 V
Nominal current I_N	100 A
AWG/kcmil	18- 4

▸ Drawings

Circuit diagram



Approval logo



► Accessories

Item	Designation	Description
Assembly		
0790501	ATP-OTTA 25	Separating plate, width: 2 mm, color: gray
3022218	CLIPFIX 35	Snap-on end bracket, for 35 mm NS 35/7.5 or NS 35/15 mounting rail, can be fitted with Zack strip ZB 8 and ZB 8/27, terminal strip marker KLM 2 and KLM, width: 9.5 mm, color: gray
0790514	D-OTTA 25	Cover, width: 2 mm, color: gray
1201442	E/UK	End clamp, for supporting the electronic base, if mounted vertically, 2 end clamps are required in each case
1201002	NS 32 GELOCHT METER	G-profile DIN rail, material: Steel, perforated, height 15 mm, width 32 mm, length 2 m
1201015	NS 32 UNGELOCHT METER	G-profile DIN rail, material: Steel, unperforated, height 15 mm, width 32 mm, length 2 m
1201028	NS 32-AL UNGELOCHT METER	G rail 32 mm (NS 32)
1201358	NS 32-CU/ 35 QMM UNGEL. METER	G-profile DIN rail, material: Copper, unperforated, height 15 mm, width 32 mm, length 2 m
1201280	NS 32-CU/120 QMM UNGEL. METER	G-profile DIN rail, deep-drawn, material: Copper, unperforated, height 15 mm, width 32 mm, length 2 m
0801733	NS 35/ 7,5 GELOCHT METER	DIN rail, material: Steel, perforated, height 7.5 mm, width 35 mm, length: 2 m
0801681	NS 35/ 7,5 UNGELOCHT METER	DIN rail, material: Steel, unperforated, height 7.5 mm, width 35 mm, length: 2 m
0801762	NS 35/ 7,5-CU UNGELOCHT METER	DIN rail, material: Copper, unperforated, height 7.5 mm, width 35 mm, length: 2 m
1201730	NS 35/15 GELOCHT METER	DIN rail, material: Steel, perforated, height 15 mm, width 35 mm, length: 2 m
1201714	NS 35/15 UNGELOCHT METER	DIN rail, material: Steel, unperforated, height 15 mm, width 35 mm, length: 2 m
1201798	NS 35/15-2,3 UNGELOCHT METER	DIN rail, material: Steel, unperforated, 2.3 mm thick, height 15 mm, width 35 mm, length: 2 m
1201756	NS 35/15-AL UNGELOCHT METER	DIN rail, deep-drawn, high profile, unperforated, 1.5 mm thick, material: Aluminum, height 15 mm, width 35 mm, length 2 m
1201895	NS 35/15-CU UNGELOCHT METER	DIN rail, material: Copper, unperforated, 1.5 mm thick, height 15 mm, width 35 mm, length: 2 m

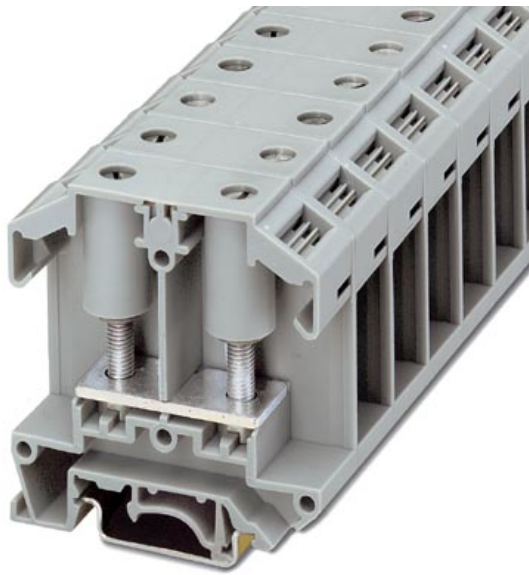
Marking

1050525	ZB10:SO/CMS	Zack strip, 10-section, divisible, special printing, marking according to customer requirements
---------	-------------	---

Tools

1205079	SZS 1,0X6,5	Screwdriver, bladed, matches all screw terminal blocks with a connection cross section of over 16 mm ² , blade: 1.0 x 6.5 mm
---------	-------------	---

► **General data**



Universal terminal block with bolt connection, cross section: 1 - 25 mm² , width: 18 mm, color: gray

Order number	0790491
Type	OTTA 25-M6

Barcode number	4017918005603
Unit pack	50 Pcs.
Customs tariff	85369010000

► **Technical data**

General

Number of levels	1
Number of connections	2
Color	gray
Insulating material	PA
Inflammability class acc. to UL 94	V2

Dimensions

Length	60 mm
Width	18 mm
Height NS 35:7,5	64.5 mm
Height NS 35:15	72 mm
Height NS 32	69 mm

Technical data

Rated surge voltage	8 kV
Contamination class	3
Surge voltage category	III
Insulating material group	I
Nominal current I_N	101 A
Nominal voltage U_N	800 V (The nominal voltage applies to insulated cable lugs)

Connection data

Conductor cross section flexible min.	1 mm ²
Max. conductor cross section, flexible	25 mm ²
Min. conductor cross section AWG/kcmil	16
Conductor cross section AWG/kcmil max	4
Screw thread	M 6
Tightening torque	3.2 Nm
Hole diameter	6.5 mm

► **Certificates**

UL

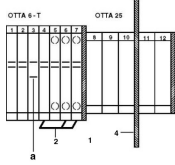
Nominal voltage U_N	600 V
Nominal current I_N	115 A

CSA

Nominal voltage U_N	600 V
Nominal current I_N	100 A
AWG/kcmil	18- 4

▶ Drawings

Circuit diagram



Approval logo



► Accessories

Item	Designation	Description
Assembly		
0790501	ATP-OTTA 25	Separating plate, width: 2 mm, color: gray
3022218	CLIPFIX 35	Snap-on end bracket, for 35 mm NS 35/7.5 or NS 35/15 mounting rail, can be fitted with Zack strip ZB 8 and ZB 8/27, terminal strip marker KLM 2 and KLM, width: 9.5 mm, color: gray
0790514	D-OTTA 25	Cover, width: 2 mm, color: gray
1201442	E/UK	End clamp, for supporting the electronic base, if mounted vertically, 2 end clamps are required in each case
1201002	NS 32 GELOCHT METER	G-profile DIN rail, material: Steel, perforated, height 15 mm, width 32 mm, length 2 m
1201015	NS 32 UNGELOCHT METER	G-profile DIN rail, material: Steel, unperforated, height 15 mm, width 32 mm, length 2 m
1201028	NS 32-AL UNGELOCHT METER	G rail 32 mm (NS 32)
1201358	NS 32-CU/ 35 QMM UNGEL. METER	G-profile DIN rail, material: Copper, unperforated, height 15 mm, width 32 mm, length 2 m
1201280	NS 32-CU/120 QMM UNGEL. METER	G-profile DIN rail, deep-drawn, material: Copper, unperforated, height 15 mm, width 32 mm, length 2 m
0801733	NS 35/ 7,5 GELOCHT METER	DIN rail, material: Steel, perforated, height 7.5 mm, width 35 mm, length: 2 m
0801681	NS 35/ 7,5 UNGELOCHT METER	DIN rail, material: Steel, unperforated, height 7.5 mm, width 35 mm, length: 2 m
0801762	NS 35/ 7,5-CU UNGELOCHT METER	DIN rail, material: Copper, unperforated, height 7.5 mm, width 35 mm, length: 2 m
1201730	NS 35/15 GELOCHT METER	DIN rail, material: Steel, perforated, height 15 mm, width 35 mm, length: 2 m
1201714	NS 35/15 UNGELOCHT METER	DIN rail, material: Steel, unperforated, height 15 mm, width 35 mm, length: 2 m
1201798	NS 35/15-2,3 UNGELOCHT METER	DIN rail, material: Steel, unperforated, 2.3 mm thick, height 15 mm, width 35 mm, length: 2 m
1201756	NS 35/15-AL UNGELOCHT METER	DIN rail, deep-drawn, high profile, unperforated, 1.5 mm thick, material: Aluminum, height 15 mm, width 35 mm, length 2 m
1201895	NS 35/15-CU UNGELOCHT METER	DIN rail, material: Copper, unperforated, 1.5 mm thick, height 15 mm, width 35 mm, length: 2 m

Marking

1050525	ZB10:SO/CMS	Zack strip, 10-section, divisible, special printing, marking according to customer requirements
---------	-------------	---

Tools

1205079	SZS 1,0X6,5	Screwdriver, bladed, matches all screw terminal blocks with a connection cross section of over 16 mm ² , blade: 1.0 x 6.5 mm
---------	-------------	---