

Section Overview

With over 25 locations around the globe, Littelfuse® is the supplier of choice when it comes to international fuses, fuseholders and accessories. With an ever expanding portfolio of products and global resources, we provide comprehensive solutions for each customer's unique application no matter where they are located around the world.



INTERNATIONAL PRODUCTS

Table of Contents

<i>NH Fuse Links</i>	169-170
<i>Diazed/Neozed Fuses and Accessories</i>	171-172
<i>Cylindrical Fuses</i>	173
<i>British Dimension HRCII-C Fuses</i>	174

NH FUSE LINKS

500 Volts • 2-630 Amperes



Description

Littelfuse® European style NH fuse links are designed for the protection of conductors and motors. The gL-gG characteristic fuse links are generally used to protect cables and installation lines from overloads and short-circuits. The aM characteristic fuse links are used for the short-circuit protection of motors and switchgear. They are available in NH00C to NH3 sizes up to 630 amperes.

Specifications

- Voltage Rating:** 500 VAC
440 VDC
- Ampere Range:** 2-630 A
- Interrupting Rating:** 120 kA AC
25 kA DC
- Standards:** DIN 43.620, IEC 269-2-1
- Approvals:** VDE
- Example part number:** NH1CG25 (size, characteristic and amperage)
- Indication:** All NH fuse links incorporate a blown fuse indicator

Recommended Fuseholders

- NH Fuse Basepg. 170
- NH Fuse Disconnectspg. 170

Web Resources

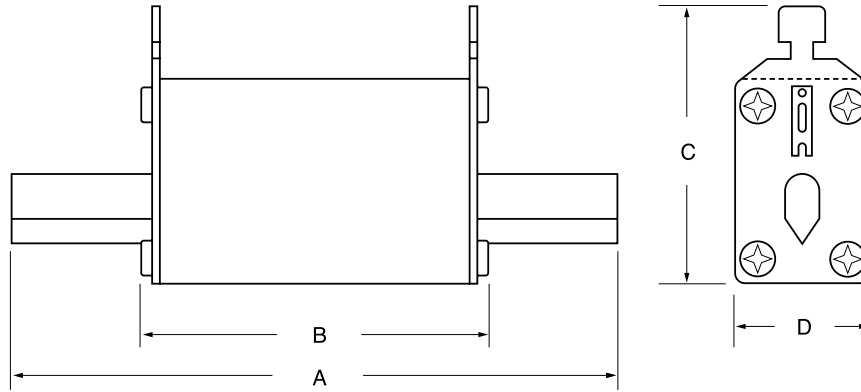
www.littelfuse.com/nh

Ordering Information

AMPERAGE	gL-gG 500 V CATALOG / SYSTEM NUMBER					aM 500 V CATALOG / SYSTEM NUMBER			
	NH00C / NH00	NH0	NH1C / NH1	NH2C / NH2	NH3C / NH3	NH00CM	NH1	NH2	NH3
2	NH00CG2	—	—	—	—	NH00CM2	—	—	—
4	NH00CG4	—	—	—	—	NH00CM4	—	—	—
6	NH00CG6	NH0G6	—	—	—	NH00CM6	—	—	—
10	NH00CG10	NH0G10	—	—	—	NH00CM10	—	—	—
16	NH00CG16	NH0G16	—	—	—	NH00CM16	—	—	—
20	NH00CG20	NH0G20	—	—	—	NH00CM20	—	—	—
25	NH00CG25	NH0G25	NH1CG25	—	—	NH00CM25	—	—	—
32	NH00CG32	NH0G32	NH1CG32	—	—	NH00CM32	—	—	—
35	NH00CG35	NH0G35	NH1CG35	—	—	NH00CM35	—	—	—
40	NH00CG40	NH0G40	NH1CG40	NH2CG40	—	NH00CM40	—	—	—
50	NH00CG50	NH0G50	NH1CG50	NH2CG50	—	NH00CM50	—	—	—
63	NH00CG63	NH0G63	NH1CG63	NH2CG63	—	NH00CM63	NH1M63	—	—
80	NH00CG80	NH0G80	NH1CG80	NH2CG80	—	NH00CM80	NH1M80	—	—
100	NH00CG100	NH0G100	NH1CG100	NH2CG100	—	NH00CM100	NH1M100	—	—
125	NH00G125	NH0G125	NH1CG125	NH2CG125	—	—	NH1M125	NH2M125	—
160	NH00G160	NH0G160	NH1CG160	NH2CG160	—	—	NH1M160	NH2M160	—
200	—	—	NH1G200	NH2CG200	—	—	NH1M200	NH2M200	—
224	—	—	NH1G224	NH2CG224	—	—	NH1M224	NH2M224	—
250	—	—	NH1G250	NH2CG250	—	—	NH1M250	NH2M250	—
300	—	—	—	NH2G300	—	—	—	NH2M300	—
315	—	—	—	NH2G315	NH3CG315	—	—	NH2M315	NH3M315
355	—	—	—	NH2G355	NH3CG355	—	—	NH2M355	NH3M355
400	—	—	—	NH2G400	NH3CG400	—	—	NH2M400	NH3M400
425	—	—	—	—	NH3G425	—	—	—	—
500	—	—	—	—	NH3G500	—	—	—	NH3M500
630	—	—	—	—	NH3G630	—	—	—	NH3M630

NH FUSE LINKS DIMENSIONS, BASES, AND DISCONNECTS

Dimensions in mm



SIZE	CURRENT RANGE	VOLTAGE (AC/DC)	INTERRUPTING RATING (AC/DC)	NOMINAL FREQUENCY	SELECTIVITY	DIMENSIONS (mm)			
						A	B	C	D
00C	2-100 A	500 V/440 V	120 kA/25 kA	45 - 62 HZ	1:1 25	78.00	54.00	51.30	20.00
00	125-160 A	500 V/440 V	120 kA/25 kA	45 - 62 HZ	1:1 25	78.00	54.00	56.40	30.00
0	6-160 A	500 V/440 V	120 kA/25 kA	45 - 62 HZ	1:1 25	123.95	70.11	53.34	30.00
1C	25-160 A	500 V/440 V	120 kA/25 kA	45 - 62 HZ	1:1 25	135.00	72.00	56.40	30.00
1	63-250 A	500 V/440 V	120 kA/25 kA	45 - 62 HZ	1:1 25	135.00	72.00	65.00	40.00
2C	40-250 A	500 V/440 V	120 kA/25 kA	45 - 62 HZ	1:1 25	150.00	72.00	61.00	40.00
2	125-400 A	500 V/440 V	120 kA/25 kA	45 - 62 HZ	1:1 25	150.00	72.00	74.20	50.00
3C	315-400 A	500 V/440 V	120 kA/25 kA	45 - 62 HZ	1:1 25	150.00	72.00	74.20	50.00
3	315-630 A	500 V/440 V	120 kA/25 kA	45 - 62 HZ	1:1 25	150.00	72.00	84.00	71.88

NH Fuse Bases and Disconnects

Fuse Bases

CATALOG NUMBER	SYSTEM NUMBER	SIZE	RATING	CONNECTION
NHB00B	NHB00B	00	690 V/160 A	Bolt
NHB00C	NHB00C	00	690 V/160 A	V-Clamp
NHB1B	NHB1B	1	690 V/250 A	Bolt
NHB2B	NHB2B	2	690 V/400 A	Bolt
NHB3B	NHB3B	3	690 V/630 A	Bolt

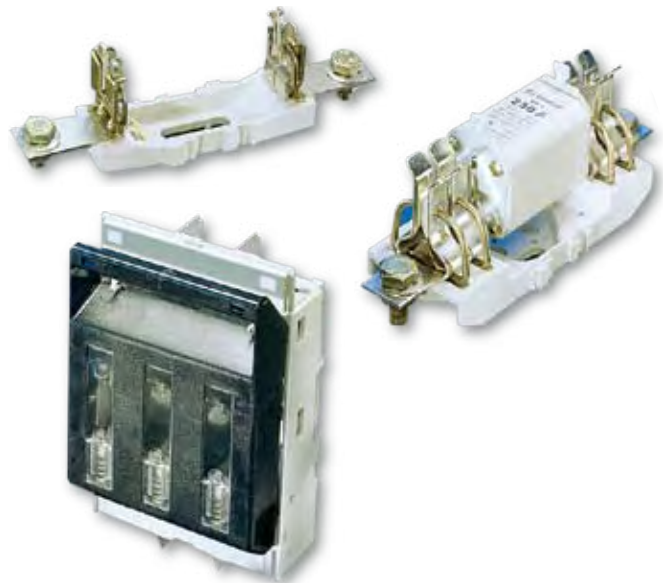
All fuse bases are single pole and gangable.

Fuse Disconnects

CATALOG NUMBER	SYSTEM NUMBER	SIZE	RATING	CONNECTION
NHFSC00B	NHFSC00B	C00	690 V/100 A	Bolt
NHFS0B	NHFS0B	0	690 V/160 A	Bolt
NHFS1B	NHFS1B	1	690 V/250 A	Bolt
NHFS2B	NHFS2B	2	690 V/400 A	Bolt
NHFS3B	NHFS3B	3	690 V/630 A	Bolt

All disconnects are 3 pole.

Contact factory for dimensional information.



Web Resources

www.littelfuse.com/nh

DIAZED/NEOZED FUSES

380-500 Volts AC • 2- 63 Amperes



Description

Littelfuse® fast acting (gL-gG) fuses are used for the protection of cables against short-circuits. Time-lag (aM) fuses are used for protection of motors. Ratings are available in standard Diazed and compact Neozed styles.

Specifications

Standards: DIN 49.522-DIN 49.525, IEC 269-3
Approvals: VDE

BASE SIZE	TYPE	CURRENT RANGE	VOLTAGE AC/DC	INTERRUPTING RATING
14	D01	2-16 A	380 V/250 V	50 KA
18	D02	20-63 A	380 V/250 V	50 KA
16	DI	2-25 A	500 V	80 KA
27	DII	2-25 A	500 V	80 KA
33	DIII	35-63 A	500 V	80 KA

All Diazed and Neozed fuses incorporate a blown fuse indicator.

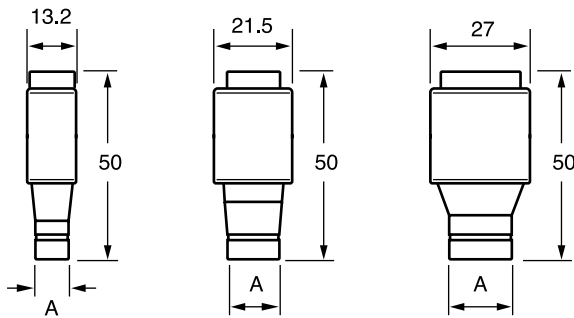
Web Resources

www.littelfuse.com/diazed



Dimensions in mm

Diazed Fuses

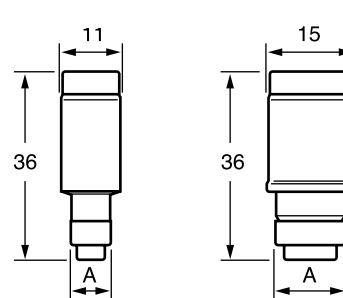


DI

DII

DIII

Neozed Fuses



D01

D02

Ordering Information

AMPERAGE	COLOR	DIAZED FUSES							NEOZED FUSES		
		gL-gG CATALOG / SYSTEM NUMBER			aM CATALOG / SYSTEM NUMBER			DIM. A (mm)	gL-gG CATALOG / SYSTEM #		DIM. A (mm)
		DI	DII	DIII	DI	DII	DIII		D01	D02	
2	Pink	DZ16F2	DZ27F2	—	DZ16T2	DZ27T2	—	6	D0Z14G2	—	7.3
4	Brown	DZ16F4	DZ27F4	—	DZ16T4	DZ27T4	—	6	D0Z14G4	—	7.3
6	Green	DZ16F6	DZ27F6	—	DZ16T6	DZ27T6	—	6	D0Z14G6	—	7.3
10	Red	DZ16F10	DZ27F10	—	DZ16T10	DZ27T10	—	8	D0Z14G10	—	8.5
16	Grey	DZ16F16	DZ27F16	—	DZ16T16	DZ27T16	—	10	D0Z14G16	—	9.7
20	Blue	DZ16F20	DZ27F20	—	DZ16T20	DZ27T20	—	12	—	D0Z18G20	10.9
25	Yellow	DZ16F25	DZ27F25	—	DZ16T25	DZ27T25	—	14	—	D0Z18G25	12.1
35	Black	—	—	DZ33F35	—	—	DZ33T35	16	—	D0Z18G35	13.3
50	White	—	—	DZ33F50	—	—	DZ33T50	18	—	D0Z18G50	14.5
63	Copper	—	—	DZ33F63	—	—	DZ33T63	20	—	D0Z18G63	15.9
BASE SIZE (mm)		16	27	33	16	27	33	—	14	18	—

DIAZED/NEOZED FUSE ACCESSORIES

Bases, Carriers and Gauge Rings



Figure 1



Figure 2



Figure 3

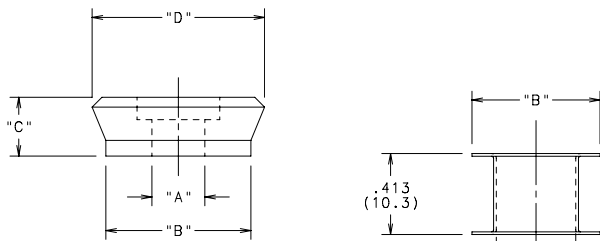


Figure 4

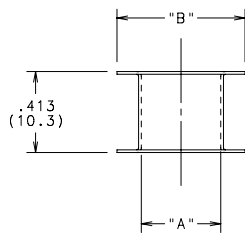


Figure 6

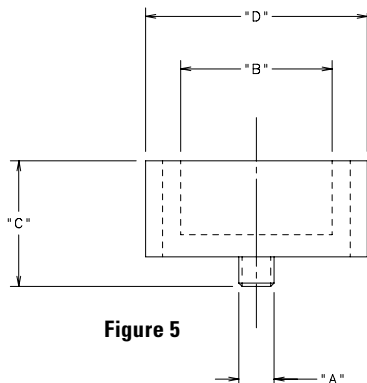


Figure 5

Description

Fuse bases, carriers, and gauge rings are available for Diazed (DZ) and Neozed (DOZ) type fuses. Fuseholders are comprised of a fuse base and carrier. Optional gauge rings act as a rejection feature and are used to prevent oversizing of fuses. All bases and carriers are single pole units. Contact factory for additional information.

Fuse Bases

CATALOG NUMBER	SYSTEM NUMBER	FUSE TYPE	BASE SIZE (mm)	MOUNTING TYPE	FIGURE
DZB27S	ODZB027SZ	DZ	27	Screw	1
DZB27DR	ODZB27DRZ	DZ	27	DIN Rail	1
DZB33S	ODZB033SZ	DZ	33	Screw	1
DZB33DR	ODZB33DRZ	DZ	33	DIN Rail	1
DOZB14S	DOZB014SZ	DOZ	14	Screw	2
DOZB14DR	DOZB14DRZ	DOZ	14	DIN Rail	2
DOZB18S	DOZB018SZ	DOZ	18	Screw	2
DOZB18DR	DOZB18DRZ	DOZ	18	DIN Rail	2

Fuse Carriers

CATALOG NUMBER	SYSTEM NUMBER	FUSE TYPE	BASE SIZE (mm)	FIGURE
DZC27	ODZC0027Z	DZ	27	3
DZC33	ODZC0033Z	DZ	33	3

Gauge Rings

AMP	COLOR	CATALOG NUMBERS			
		DZ (FIGURE 4)	DZ (FIGURE 5)	DOZ (FIGURE 6)	DOZ (FIGURE 6)
2	Pink	DZ27PK	—	DOZ14PK	DOZ18PK
4	Brown	DZ27BR	—	DOZ14BR	DOZ18BR
6	Green	DZ27GN	—	DOZ14GN	DOZ18GN
10	Red	DZ27RD	—	DOZ14RD	DOZ18RD
16	Grey	DZ27GY	—	—	DOZ18GY
20	Blue	DZ27BE	—	—	DOZ18BE
25	Yellow	DZ27YW	—	—	DOZ18YW
35	Black	—	DZ33BK	—	DOZ18BK
50	White	—	DZ33WE	—	DOZ18WE
63	Copper	—	DZ33CR	—	—

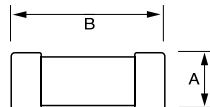
Contact factory for dimensional information.

Web Resources

www.littelfuse.com/diazed

CYLINDRICAL FUSES

500 Volts • 0.5-100 Amperes



Description

Littelfuse® fast acting (gL-gG) fuses are used for the protection of cables against short-circuits. Time-lag (aM) fuses are used for protection of motors.

Specifications

Standards: IEC 269-2-1

Ordering Information

CATALOG/ SYSTEM #	SIZE (mm)	CURRENT RANGE	VOLTAGE AC	INTERRUPTING RATING
CY10X38G1	10 X 38 mm	0.5-25 A 32 A	500 V 400 V	120 kA
CY14X51G2	14 X 51 mm	2-25 A 32-40 A 50A	690 V 500 V 400 V	80 kA 120 kA 120 kA
CY22X58G50	22 X 58 mm	16-63 A 80-100 A	690 V 500 V	80 kA 120 kA

AMPERAGE	gL-gG			aM			
	10 X 38	14 X 51	22 X 58	10 X 38	14 X 51	22 X 58	
0.5	CY10X38G.5	—	—	CY10X38M.5	—	—	
1	CY10X38G1	—	—	CY10X38M1	—	—	
2	CY10X38G2	CY14X51G2	—	CY10X38M2	CY14X51M2	—	
4	CY10X38G4	CY14X51G4	—	CY10X38M4	CY14X51M4	—	
6	CY10X38G6	CY14X51G6	—	CY10X38M6	CY14X51M6	—	
8	CY10X38G8	CY14X51G8	—	CY10X38M8	CY14X51M8	—	
10	CY10X38G10	CY14X51G10	—	CY10X38M10	CY14X51M10	—	
12	CY10X38G12	CY14X51G12	—	CY10X38M12	CY14X51M12	—	
16	CY10X38G16	CY14X51G16	CY22X58G16	CY10X38M16	CY14X51M16	CY22X58M16	
20	CY10X38G20	CY14X51G20	CY22X58G20	CY10X38M20	CY14X51M20	CY22X58M20	
25	CY10X38G25	CY14X51G25	CY22X58G25	CY10X38M25	CY14X51M25	CY22X58M25	
32	CY10X38G32	CY14X51G32	CY22X58G32	CY10X38M32	CY14X51M32	CY22X58M32	
40	—	CY14X51G40	CY22X58G40	—	CY14X51M40	CY22X58M40	
50	—	CY14X51G50	CY22X58G50	—	CY14X51M50	CY22X58M50	
63	—	—	CY22X58G63	—	—	CY22X58M63	
80	—	—	CY22X58G80	—	—	CY22X58M80	
100	—	—	CY22X58G100	—	—	CY22X58M100	
DIMENSIONS (mm)	A	10	14	22	10	14	22
	B	38	51	58	38	51	58

Fuseholders

CATALOG/ SYSTEM #	SIZE	POLES	AMP RATING	VOLTAGE	TERMINAL TYPE
CYH10381	10 X 38	1	32 A	690 V	Pressure Plate
CYH10382	10 X 38	2	32 A	690 V	Pressure Plate
CYH10383	10 X 38	3	32 A	690 V	Pressure Plate
CYH10381ID*	10 X 38	1	32 A	690 V	Pressure Plate
CYH14511	14 X 51	1	50 A	690 V	Pressure Plate
CYH14512	14 X 51	2	50 A	690 V	Pressure Plate
CYH14513	14 X 51	3	50 A	690 V	Pressure Plate
CYH22581	22 X 58	1	125 A	690 V	Pressure Plate
CYH22582	22 X 58	2	125 A	690 V	Pressure Plate
CYH22583	22 X 58	3	125 A	690 V	Pressure Plate

* Indicating

NOTE: All fuseholders are DIN-Rail mountable. Contact factory for dimensional information.

Web Resources

www.littelfuse.com/cy

HRC FORM II CLASS C FUSES

600 VAC-600 Amperes



Description

HRCII-C fuses are stud-mounted fuses designed to British standard dimensions. They are generally used for motor short-circuit protection in dead-front holders, and are normally required to be used in conjunction with a motor running overload device.

Specifications

Voltage Rating:	600 VAC, 460 VDC
Interrupting Rating:	200 kA rms symmetrical AC 40 kA rms symmetrical DC
Ampere Range:	2–600 A
Approvals:	CSA Certified to Standard C22.2 No. 106-M90 (File No. LR90341) IEC 269-1&2

Dimensions in inches (mm)

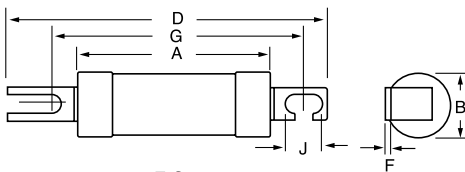


FIG. 1

Recommended Fuseholders

DF30F, DF30B, DF30FB (2-30 A)	00DF030.ZX
DF60F, DF60B, DF60FB (40-60 A)	00DF060.ZX
DF100F, DF100B, DF100FB (80-100 A).....	00DF100.ZX

Specify Fuseblock Terminations F=Front, FB=Front/Back, B=Back
With part # suffix (Example: 600 V 30 A Dead front Holder
with Front/Back termination 00DF030.ZXFB)

Web Resources

www.littelfuse.com/hrc

Ordering Information

FUSE		FUSE-HOLDER SYSTEM NUMBER	AMPS	FIGURE NO	DIMENSIONS IN INCHES (mm)					
CATALOG NUMBER	SYSTEM NUMBER				A	B	D	F	G	J
02C0002	02C0002.Z	00DF002.ZX	2	1	56 (2.2)	21 (0.83)	85 (3.3)	1 (0.04)	73 (2.87)	7.5 (0.29)
02C0004	02C0004.Z	00DF004.ZX	4	1	56 (2.2)	21 (0.83)	85 (3.3)	1 (0.04)	73 (2.87)	7.5 (0.29)
02C0006	02C0006.Z	00DF006.ZX	6	1	56 (2.2)	21 (0.83)	85 (3.3)	1 (0.04)	73 (2.87)	7.5 (0.29)
02C0010	02C0010.Z	00DF010.ZX	10	1	56 (2.2)	21 (0.83)	85 (3.3)	1 (0.04)	73 (2.87)	7.5 (0.29)
02C0015	02C0015.Z	00DF015.ZX	15	1	56 (2.2)	21 (0.83)	85 (3.3)	1 (0.04)	73 (2.87)	7.5 (0.29)
02C0020	02C0020.Z	00DF020.ZX	20	1	56 (2.2)	21 (0.83)	85 (3.3)	1 (0.04)	73 (2.87)	7.5 (0.29)
02C0025	02C0025.Z	00DF025.ZX	25	1	56 (2.2)	21 (0.83)	85 (3.3)	1 (0.04)	73 (2.87)	7.5 (0.29)
02C0030	02C0030.Z	00DF030.ZX	30	1	56 (2.2)	21 (0.83)	85 (3.3)	1 (0.04)	73 (2.87)	7.5 (0.29)
02C0040	02C0040.Z	00DF040.ZX	40	1	57 (2.24)	26 (1.02)	88 (3.45)	1.6 (0.06)	73 (2.87)	7.5 (0.29)
02C0050	02C0050.Z	00DF050.ZX	50	1	57 (2.24)	26 (1.02)	88 (3.45)	1.6 (0.06)	73 (2.87)	7.5 (0.29)
02C0060	02C0060.Z	00DF060.ZX	60	1	57 (2.24)	26 (1.02)	88 (3.45)	1.6 (0.06)	73 (2.87)	7.5 (0.29)
02C0080	02C0080.Z	00DF080.ZX	80	1	68 (2.88)	36 (1.42)	110 (4.33)	2.4 (0.09)	93 (3.7)	—
02C0100	02C0100.Z	00DF100.ZX	100	1	68 (2.88)	36 (1.42)	110 (4.33)	2.4 (0.09)	93 (3.7)	—

Up to 600 A available. Contact factory for higher amperages.