

NEMA AC Motor C-Face Kits for Field Conversion

Features: Complete kits with all hardware necessary for converting Baldor 56 through 445T frame rigid base motors to "C-Face" mounting with base. For a Baldor conversion, refer to the Mod Express Section in this catalog. Please furnish the motor specification number when ordering.



For use with Legacy Baldor Motor Designs

| Catalog Number | Description Type/Frame | Bearing | Enclosure | List Price | Mult. Sym. | Ap'x. Shpg. Wgt. | |
|----------------|------------------------|---------|-----------|------------|------------|------------------|-----|
| 34-3900T | 34/48C | 6203 | TEFC | 49 | A8 | 1 | |
| 34-171 | 34/56C | 6203 | TEFC | 49 | A8 | 2 | |
| 34-3903A | 34/143-5TC | 6205 | ODP | 60 | A8 | 2 | |
| 34-3903T | 34/143-5TC | 6205 | TEFC | 63 | A8 | 2 | |
| 35-8762 | 35/56C,143-5TC | 6205 | TEFC | 58 | A8 | 3 | |
| 35-8764 | 35/56C,143-5TC | 6205 | ODP | 58 | A8 | 3 | |
| 35-1300 | 35/56C,143-5TC | 6205 | TEFC | 99 | A8 | 6 | |
| 35-1325 | 35/182-4TC | 6206 | TEFC | 128 | A8 | 11 | |
| 35-1409 | 35/182-4TC | 6206 | ODP | 143 | A8 | 11 | |
| 36-1037 | 36/182-4C | 6206 | TEFC | 113 | A8 | 7 | |
| 36-1206A | 36/213-5TC | 6207 | OPSB | 146 | A8 | 13 | |
| 36-1206B | 36/213-5TC | 6207 | ODP | 154 | A8 | 14 | |
| 36-486 | 36/182-4C | 6206 | ODP | 161 | A8 | 8 | |
| 36-3301 | 36/182-4TC | 6206 | TEFC | 82 | A8 | 5 | |
| 36-3403 | 36/182-4TC | 6206 | ODP | 96 | A8 | 5 | |
| 36-1749 | 36/182-4TC | 6206 | TEFC | 144 | A8 | 12 | |
| 37-1404 | 37/213-5C, TC | 6307 | ODP | 192 | A8 | 14 | |
| 37-1304 | 37/213-5C, TC | 6307 | TEFC | 159 | A8 | 12 | |
| 37-1402 | 37/254-6UC, TC | 6309 | ODP | 228 | A8 | 18 | |
| 37-1302 | 37/254-6UC, TC | 6309 | TEFC | 243 | A8 | 18 | |
| 09-1309 | 09/254-6UC, TC | ● | 6309 | TEFC | 328 | A8 | 22 |
| 09-1310 | 09/284-6UC, TC | ● | 6311 | TEFC | 496 | A8 | 22 |
| 39-3400 | 39/254-6UC, TC | | 6309 | ODP | 213 | A8 | 19 |
| 39-1403 | 39/284-6UC, TC | | 6311 | ODP | 342 | A8 | 21 |
| 10-1304 | 10/324-6UC, TC | ● | 6312 | TEFC | 365 | A8 | 32 |
| 10-1305 | 10/284-6UC, TC | ● | 6311 | TEFC | 381 | A8 | 32 |
| 40-1400 | 40/284-6UC, TC | | 6311 | ODP | 347 | A8 | 30 |
| 40-1401 | 40/324-6 UC, TC | ● | 6312 | ODP | 356 | A8 | 40 |
| 12-1105 | 12/324-6UC, TC | | 6312 | TEFC | 469 | A8 | 48 |
| 42-1300 | 42/324-6UC, TC | ● | 6312 | ODP | 625 | A8 | 36 |
| 42-1400 | 42/364-5 UC & TC | ● | 6313 | ODP | 608 | A8 | 30 |
| 14-1303 | 14/404-5TC | | 6316 | TEFC | 831 | A8 | 50 |
| 14-1704 | 14/364-5UC, TC | ● | 6313 | TEFC | 608 | A8 | 57 |
| 14-1401 | 14/364-5UC, TC | ● | 6313 | ODP | 670 | A8 | 60 |
| 16-1704 | 16/404-5UC, TC | ● | 6316 | TEFC | 831 | A8 | 76 |
| 16-1400 | 16/404-5UC, TC | ● | 6316 | ODP | 905 | A8 | 78 |
| 18-1203 | 18/444-7UC, TSC | ✕● | 6313 | ODP | 1,079 | A8 | 118 |
| 18-1202 | 18/444-7UC, TC | | 6319 | ODP | 1,134 | A8 | 128 |
| 18-1302 | 18/444-9UC, TC | | 6319 | TEFC | 1,087 | A8 | 139 |
| 18-1304 | 18/444-5, TS-444-STSC | | 6313 | TEFC | 1,196 | A8 | 163 |
| 44-1402 | 44/404-5 UC & TC | | 6316 | ODP | 704 | A8 | 40 |
| 44-1403 | 44/404-5 UC & TSC | | 6313 | ODP | 704 | A8 | 40 |
| 44-1403A | 44/404 USC, TSC | | 6312 | OPEN | 704 | A8 | 40 |

NOTE: NEMA "BA" Dimension will be non-standard after conversion on NEMA 143-5T, 182-4T, 213-5T and 254-6T.

SHADED RATINGS ARE CAST IRON FRAMES

Specification number of motor should be verified when ordering.

- = Suitable only for field conversion of motors manufactured with external rabbets on the stator housings.
- ✕ = Contact a District Office with nameplate specification number to determine correct kit.

C-Face Kits

The following list of available motor kits may be purchased as a kit only and shipped as a separate item from stock, or the kit can be mounted on an suitable motor and shipped from the modification center.

56 - 140 Frames

For use with Legacy Reliance Motor Designs

| Frame | Enclosure | Catalog Number | Notes | Ap'x. Shpg. Wgt. Lbs. | List Price | Mult. Sym. |
|-------|--------------------|----------------|-------|-----------------------|------------|------------|
| 56 | Basic (TEFC, TENV) | K56H3055 | 81 | 1 | 58 | A8 |

NOTE: Basic (TEFC, TENV) motors that have aluminum end shields. This kit will not mount on XT/EMT/XEX and other enhanced enclosure product that have Cast Iron end shields. See notes on inside back flap and pages 5-6.

180T - 400T Frames

For use with Legacy Reliance Motor Designs

| Frame | Enclosure | Catalog Number | Notes | Ap'x. Shpg. Wgt. Lbs. | List Price | Mult. Sym. |
|---------|------------------------------|----------------|-------|-----------------------|------------|------------|
| 180T | TEFC, TEFC-XT, TEFC-XEX, ODP | K18G3 | 84 | 13 | 154 | A8 |
| 180 | TEFC U-FRAME | K18G5 | 84 | 15 | 161 | A8 |
| 210T, U | TEFC, TEFC-XT, TEFC-XEX, ODP | K21G3 | 84 | 16 | 192 | A8 |
| 250T, U | TEFC, TEFC-XT, TEFC-XEX, ODP | K25G2 | 84 | 26 | 328 | A8 |
| 280T, U | TEFC, TEFC-XT, TEFC-XEX, ODP | K28G2 | | 38 | 381 | A8 |
| 320T, U | TEFC, TEFC-XT, TEFC-XEX | K32G2 | | 45 | 469 | A8 |
| 360T, U | TEFC, TEFC-XT, TEFC-XEX | K36G2 | | 69 | 608 | A8 |
| 400T, U | TEFC, TEFC-XT, TEFC-XEX | K40G2 | 85 | 113 | 905 | A8 |

NOTE: See notes on inside back flap and pages 5-6.

NEMA DC Motor C-Face Kit for Field Conversion

Features: For DC motors with catalog number ending in "P".
These complete kits are for motors on pages 279-281.



For use with Legacy Baldor Motor Designs

| Catalog Number | Frame | Bearing | Enclosure | List Price | Mult. Sym. | Ap'x Shpg. Wgt. |
|----------------|--------|---------|--------------------------------|------------|------------|-----------------|
| 180-5002 | 180ATC | 6206 | Drip-Proof | 752 | A8 | 18 |
| 210-5001 | 210ATC | 6207 | Drip Proof or Totally Enclosed | 902 | A8 | 12 |
| 250-5001 | 250ATC | 6209 | Drip Proof of Totally Enclosed | 1,391 | A8 | 75 |
| 280-5002 | 280ATC | 6210 | Drip Proof | 1,843 | A8 | 57 |
| 320-5002 | 320ATC | 6211 | Drip Proof | 2,569 | A8 | 87 |
| 360-5001 | 360ATC | 6213 | Drip Proof or Totally Enclosed | 3,942 | A8 | 121 |
| 400-5001 | 400ATC | 6214 | Drip Proof or Totally Enclosed | 4,774 | A8 | 173 |

Double C-Face Motor Brake Kits

Coil Voltage: 115/208-230

Features: Double C-Face coupler brakes. Mounts on motors with C-Face, provides NEMA C-face mounting on brake. Spring set, electrically released.



| Brake Rating | Brake Mounting | Catalog Number | List Price | Mult. Sym. | Ap'x. Shpg. Wgt. |
|--------------|----------------|----------------|------------|------------|------------------|
| 3 ft-lb | 56C | CBK003-1 | 558 | A8 | 12 |
| 6 ft-lb | 56C | CBK006-1 | 822 | A8 | 12 |
| 6 ft-lb | 145TC | CBK006-2 | 822 | A8 | 12 |
| 10 ft-lb | 145TC | CBK010-1 | 959 | A8 | 12 |
| 15 ft-lb | 145TC | CBK015-1 | 2,050 | A8 | 12 |

NOTE: See notes on inside back flap and pages 5-6.

D-Flange Kits



Complete kits with hardware necessary for converting legacy Baldor 145T-445T frame rigid base motors to “D-Flange” mounting with base. Please furnish the motor specification number when ordering.

For use with Legacy Baldor Motor Designs

| NEMA Frame | Enclosure | Catalog Number | List Price | Mult. Sym. | Ap'x. Shpg. Weight Lbs. |
|-------------|-----------|----------------|------------|------------|-------------------------|
| 143-145T | TEFC | 35EP1506A01SP | 178 | A8 | 8 |
| 143-145T | OPEN | 35EP1604A01SP | 174 | A8 | 8 |
| 182-184T | OPEN | 36EP1405A09SP | 193 | A8 | 8 |
| 182-184TD | TEFC | 36EP1304A62SP | 196 | A8 | 15 |
| 286-286 U,T | TEFC | 10EP1502A01SP | 484 | A8 | 39 |
| 324-326 U,T | TEFC | 12EP1501A03SP | 836 | A8 | 50 |
| 364-365 U,T | OPEN | 14EP1601A01SP | 589 | A8 | 61 |
| 364-365 U,T | TEFC | 14EP1705A01SP | 1,019 | A8 | 73 |
| 404-405 U,T | OPEN | 16EP1601A01SP | 1,243 | A8 | 67 |
| 404-405 U,T | TEFC | 16EP1501A01SP | 1,309 | A8 | 75 |
| 444-445 U,T | OPEN | 18EP1600A01SP | 1,805 | A8 | 97 |
| 444-445 U,T | TEFC | 18EP1500A01SP | 1,593 | A8 | 168 |
| 447-449 | TEFC | 18EP1506A01SP | 1,648 | A8 | 155 |

D-Flange Kits

For use with Legacy Reliance Motor Designs

| Frame | Enclosure | Catalog Number | Notes | Ap'x. Shpg. Wgt. Lbs. | List Price | Mult. Sym. |
|-----------|-------------------------|----------------|-------|-----------------------|------------|------------|
| 180, 180T | TEFC, TEFC-XT, TEFC-XEX | K18G6 | 47 | 18 | 470 | A8 |
| 210, 210T | TEFC, TEFC-XT, TEFC-XEX | K21G6 | 47 | 128 | 576 | A8 |

NOTE: See notes on inside back flap and pages 5-6.

Drip Covers for Field Conversion



Standard ODP Motors to Vertical Mount

Features: Complete kits with all hardware, attaches to endplate with no drilling. Designed to protect open steel band motors from rain, snow and ice when mounted outdoors in a vertical position. Made from heavy steel. Primed and painted inside and out. For a Baldor conversion, refer to the Mod Express Section in this catalog.

For use with Legacy Baldor Motor Designs

| Catalog Number | Description | List Price | Mult. Sym. | Ap'x. Shpg. Wgt. |
|----------------|-------------|------------|------------|------------------|
| FCD34 | 34/48-56 | 78 | A8 | 1 |
| FCD35 | 35/56-145 | 109 | A8 | 1 |
| FCD36 | 36/182-184 | 95 | A8 | 2 |
| FCD37 | 37/213-256 | 115 | A8 | 3 |
| FCD39 | 39/254-256 | 154 | A8 | 3 |
| FCD40 | 40/284-286 | 165 | A8 | 12 |
| FCD42 | 42/324-326 | 177 | A8 | 5 |

NOTE: Refer to Abbreviations on the inside back flap for definitions of Kit Catalog No. and Description.

Fan Cover/Conduit Boxes for Field Conversion



Standard TEFC Cast Iron Motors

Applications: For all Cast Iron construction.

Features: Complete kits consists of cast iron fan covers and cast iron conduit boxes when necessary. The kits also include all necessary mounting hardware. These kits replace the standard steel fan cover and aluminum conduit box when used. For a Baldor conversion, refer to the Mod Express Section in this catalog.

For use with Legacy Baldor Motor Designs

| Catalog Number | Description | List Price | Mult. Sym. | Ap'x. Shpg. Wgt. |
|----------------|---------------|------------|------------|------------------|
| FFC05 | 05/143-5T | 154 | A8 | 6 |
| FFC06 | 06/182-4T | 165 | A8 | 10 |
| FFC07WB | 07/213-5T | 245 | A8 | 19 |
| FFC09WB | 09/254-6U & T | 337 | A8 | 28 |

NOTE: Refer to Abbreviations on the inside back flap for definitions of Kit Catalog No. and Description. Catalog numbers ending in WB include a cast iron conduit box and lid. NOT FOR USE ON EXPLOSION PROOF MOTORS.

SHADED RATINGS ARE CAST IRON FRAMES

Ball Bearing to Roller Bearing Conversion



TEFC Motors 449T thru 5011L

Applications: To accommodate heavy belted loads.

Features: Complete kit consists of roller bearings, retainer, spacers and proper grease. For Baldor conversion, refer to the Mod Express section in this catalog.

For use with Super-E® Liberator Motors

| NEMA Frame | Motor Poles | Motor Enclosure | Catalog Number | List Price | Mult. Sym. | Ap'x. Shpg. Wgt. |
|---------------|-------------|-----------------|----------------|------------|------------|------------------|
| G5008L-G5012L | 4 | TEFC | RBT322-G30 | 2,218 | A8 | 34 |

Gear Motor Accessories Conduit Box Kit



Baldor 24 Frame stock gearmotors are designed to accommodate this optional conduit/capacitor box.

| Motor Types | Kit Description | Catalog Number | List Price | Mult. Sym. | Ap'x. Shpg. Wgt. |
|------------------------|--|----------------|------------|------------|------------------|
| 2412, 2416, 2420, 2424 | Combination Conduit/Capacitor Mounting Box Kit | BKP2400 | 49 | A8 | 1 |

PSM Mounting Adapters



B92 is formed steel mounting base that bolts to machined surface on bottom of PSM gear box casting. Provides secure foot mounting of gear motor and drop-in interchangeability with other major manufacturers.

B93 is a three point face mounting adapter. Provides interchangeability with other manufacturers.

| Catalog Number | Description | List Price | Mult. Sym. | Ap'x. Shpg. Wgt. |
|----------------|--------------------|------------|------------|------------------|
| B92 | Foot Mount | 40 | A8 | 1 |
| B93 | 3 Point Face Mount | 51 | A8 | 1 |

"L" Type Mounting Brackets



Applications: Mounting bracket for PSSH and PSL gear motors. Securely mounts to gear face in 90 degree locations for floor, wall or ceiling mount. Catalog LB74 is not recommended for PSL/PSLH units weighing over 20 lbs. For units weighing more than 20 lbs. use LB75.

| Catalog Number | List Price | Mult. Sym. | Ap'x. Shpg. Wgt. |
|----------------|------------|------------|------------------|
| LB73 | 40 | A8 | 2 |
| LB73GR | 40 | A8 | 2 |
| LB74 | 57 | A8 | 2 |
| LB75 | 79 | A8 | 7 |

NOTE: (1) Painted Baldor gray. LB73 & LB73GR for PSSH style gearmotors, LB74 & LB75 for PSL/PSLH style gearmotors.

H Gearbox Accessories



Baldor offers single and three-phase hollow bore (shaft mount) gearmotors. By adding a base and shaft kit, they can also be used on applications requiring a right-angle shaft extension. The shaft can be used for either right or left hand output applications.

| Catalog Number | Description | List Price | Mult. Sym. | Ap'x. Shpg. Wgt. |
|----------------|------------------|------------|------------|------------------|
| B19H71 | Horiz Base Kit | 67 | A8 | 1 |
| SH10HS | Output Shaft Kit | 21 | A8 | 2 |

Motors and Gearmotors UL, cUL and CSA Approvals



| Product Type | CSA LR2262 | UL E46145 | CUL E46145 |
|--------------|--|--|-------------------------------------|
| AC | Motor Models and Frames 24, 25, 33 | Motor Models and Frames 24, 25, 33 | |
| DC | Motor Models and Frames 73, 74: 90V Ratings Only Motor Models and Frames 25, 33: Not Restricted to 90 Volts | Motor Models and Frames 23, 25, 33, 73, 74, 125, 135 | Motor Model and Frames 23, 125, 135 |

NOTE: See notes on inside back flap and pages 5-6.

Gearmotors and Gear Products

Motor Accessories

Grinders

Generators

Servo Motors and Controls

Mod Express

Baldor Education Workshops

Warranties and Sales Policies

Cross Reference and Index

Baldor Sales Offices

Adjustable Motor Bases

These motor bases simplify mounting and belt tension adjustment at installation and during later maintenance checks. These are heavy duty adjustable motor bases manufactured of steel or plate. All bases are detergent washed, painted with dark gray primer and oven baked for corrosion resistance. The nuts and bolts are zinc plated. NEMA 215T and smaller bases feature one adjusting screw. Bases for NEMA 254T frame and larger motors feature two adjusting screws. Motor mounting bolts are included. Bases listed can be used with motor frame numbers given and succeeded by the letters S, T, U, US and TS, or any other letter combinations provided the motors' base meets NEMA standards.

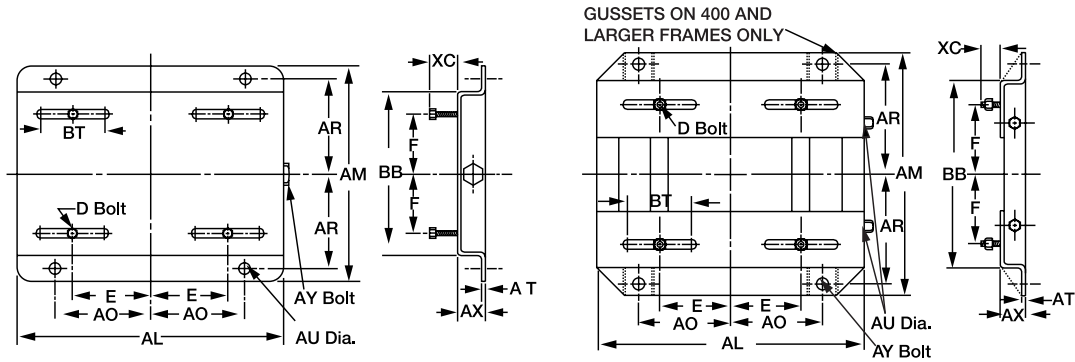


| NEMA Frame Motors | Base Catalog Number | List Price | Mult. Sym. | No. of Adjusting Screws | Motor Mounting Bolt Size | Ap'x Shpg. Wgt. |
|-------------------|---------------------|------------|------------|-------------------------|--------------------------|-----------------|
| 48 | B48T | 88 | A8 | 1 | 5/16 x 1 | 3 |
| 56 | B56T | 88 | A8 | 1 | 5/16 x 1 | 5 |
| 143T | B143T | 113 | A8 | 1 | 5/16 x 1 | 6 |
| 145T | B145T | 113 | A8 | 1 | 5/16 x 1 | 7 |
| 182T | B182T | 120 | A8 | 1 | 3/8 x 1 1/2 | 10 |
| 184T | B184T | 120 | A8 | 1 | 3/8 x 1 1/2 | 10 |
| 213T | B213T | 139 | A8 | 1 | 3/8 x 1 1/2 | 14 |
| 215T | B215T | 139 | A8 | 1 | 3/8 x 1 1/2 | 15 |
| 254T | B254T | 230 | A8 | 2 | 1/2 x 1 3/4 | 21 |
| 256T | B256T | 230 | A8 | 2 | 1/2 x 1 3/4 | 21 |
| 284T | B284T | 261 | A8 | 2 | 1/2 x 2 | 24 |
| 286T | B286T | 261 | A8 | 2 | 1/2 x 2 | 26 |
| 324T | B324T | 404 | A8 | 2 | 5/8 x 2 1/2 | 34 |
| 326T | B326T | 404 | A8 | 2 | 5/8 x 2 1/2 | 37 |
| 364T | B364T | 503 | A8 | 2 | 5/8 x 2 1/2 | 48 |
| 365T | B365T | 503 | A8 | 2 | 5/8 x 2 1/2 | 50 |
| 404T | B404T | 748 | A8 | 2 | 3/4 x 3 | 62 |
| 405T | B405T | 748 | A8 | 2 | 3/4 x 3 | 66 |
| 444T | B444T | 915 | A8 | 2 | 3/4 x 3 | 70 |
| 445T | B445T | 915 | A8 | 2 | 3/4 x 3 | 71 |
| 447T | B447T | 1,078 | A8 | 2 | 3/4 x 3 1/2 | 93 |
| 449T | B449T | 1,078 | A8 | 2 | 3/4 x 3 1/2 | 99 |
| 5007-11 | B5000RLS (1) | 1,624 | A8 | 2 | 7/8 x 3 1/2 | 149 |

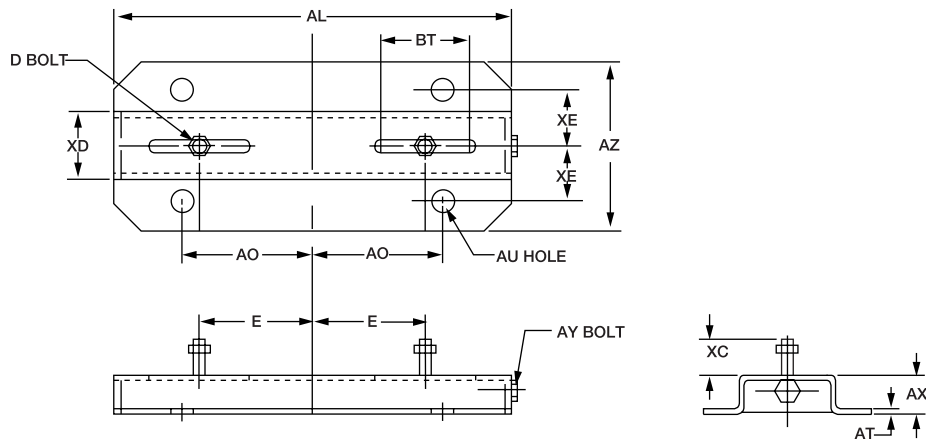
NOTE: Bases not suitable for vertical mounting. See base dimensions on next page.

(1) One adjustable motor rail.

Adjustable Motor Bases Dimension Diagrams



| NEMA Frame | Catalog Number | E | F | AL | AM | AO | AR | AT | AU | AX | BB | BT | XC | D Bolt | AY Bolt |
|------------|----------------|-------|-------|--------|--------|-------|--------|-------|-------|-------|--------|------|-------|-------------|----------|
| 48 | B48T | 2.125 | 1.375 | 10.00 | 6.25 | 3.50 | 2.75 | 0.078 | 0.375 | 1.125 | 4.25 | 3.00 | 0.875 | 5/16 x 1 | 3/8 x 4 |
| 56 | B56T | 2.437 | 1.50 | 10.625 | 6.50 | 3.812 | 2.875 | | | | 4.50 | | | | |
| 143 | B143T | 2.75 | 2.00 | 10.50 | 7.50 | 3.75 | 3.375 | 0.109 | 0.375 | 1.125 | 5.50 | 3.00 | 0.812 | 5/16 x 1 | 3/8 x 4 |
| 145 | B145T | | 2.50 | | 8.50 | | 3.875 | | | | 6.50 | | | | |
| 182 | B182T | 3.75 | 2.25 | 12.75 | 9.50 | 4.50 | 4.25 | 0.140 | 0.50 | 1.50 | 6.50 | 3.00 | 1.50 | 3/8 x 1-3/4 | 1/2 x 5 |
| 184 | B184T | | 2.75 | | 10.50 | | 4.75 | | | | 7.50 | | | | |
| 213 | B213T | 4.25 | 2.75 | 15.00 | 11.00 | 5.25 | 4.75 | 0.156 | 0.50 | 1.75 | 7.50 | 3.50 | 1.50 | 3/8 x 1-3/4 | 1/2 x 5 |
| 215 | B215T | | 3.50 | | 12.50 | | 5.50 | | | | 9.00 | | | | |
| 254 | B254T | 5.00 | 4.125 | 17.75 | 15.125 | 6.25 | 6.625 | 0.187 | 0.625 | 2.00 | 10.75 | 4.00 | 1.437 | 1/2 x 1-3/4 | 5/8 x 6 |
| 256 | B256T | | 5.00 | | 16.875 | | 7.50 | | | | 12.50 | | | | |
| 284 | B284T | 5.50 | 4.75 | 19.75 | 16.875 | 7.00 | 7.50 | 0.187 | 0.625 | 2.00 | 12.514 | 4.50 | 1.687 | 1/2 x 2 | 5/8 x 6 |
| 286 | B286T | | 5.50 | | 18.375 | | 8.25 | | | | | | | | |
| 324 | B324T | 6.25 | 5.256 | 22.75 | 19.25 | 8.00 | 8.50 | 0.187 | 0.75 | 2.50 | 14.00 | 5.25 | 2.187 | 5/8 x 2-1/2 | 3/4 x 9 |
| 326 | B326T | | 5.256 | | 20.75 | | 9.25 | | | | 15.50 | | | | |
| 364 | B364T | 7.00 | 5.625 | 25.50 | 20.50 | 9.00 | 9.125 | 0.25 | 0.75 | 2.50 | 15.50 | 6.00 | 2.062 | 5/8 x 2-1/2 | 3/4 x 9 |
| 365 | B365T | | 6.625 | | 21.50 | | 9.625 | | | | 16.50 | | | | |
| 404 | B404T | 8.00 | 6.125 | 28.75 | 22.375 | 10.00 | 9.875 | 0.25 | 0.875 | 3.00 | 16.50 | 7.00 | 2.50 | 3/4 x 3 | 3/4 x 11 |
| 405 | B405T | | 6.387 | | 23.875 | | 10.625 | | | | 18.00 | | | | |
| 444 | B444T | 9.00 | 7.25 | 31.25 | 24.625 | 11.00 | 11.00 | 0.25 | 0.875 | 3.00 | 19.25 | 7.50 | 2.50 | 3/4 x 3 | 3/4 x 11 |
| 445 | B445T | | 8.25 | | 26.625 | | 12.00 | | | | 21.25 | | | | |
| 447 | B447T | 9.00 | 10.00 | 31.25 | 30.125 | 11.00 | 13.75 | 0.312 | 1.125 | 3.00 | 24.75 | 7.50 | 3.00 | 3/4 x 3-1/2 | 3/4 x 14 |
| 449 | B449T | | 12.50 | | 35.125 | | 16.25 | | | | 29.75 | | | | 3/4 x 11 |



| NEMA Frame | Catalog Number | E | AL | AO | AL | AU | AX | AZ | BT | XC | XO | XE | D Bolt | AY Bolt |
|------------|-----------------|-------|-------|-------|-------|------|------|-------|------|------|------|------|-------------|----------|
| 500 | B5000RLS | 10.00 | 35.00 | 12.50 | 0.312 | 1.00 | 3.50 | 12.00 | 8.00 | 3.00 | 6.00 | 4.50 | 7/8 x 3-1/2 | 7/8 x 16 |

DIMENSIONS ARE FOR REFERENCE ONLY, CONSULT A BALDOR DISTRICT OFFICE FOR CERTIFIED DIMENSIONS

Conversion Bases

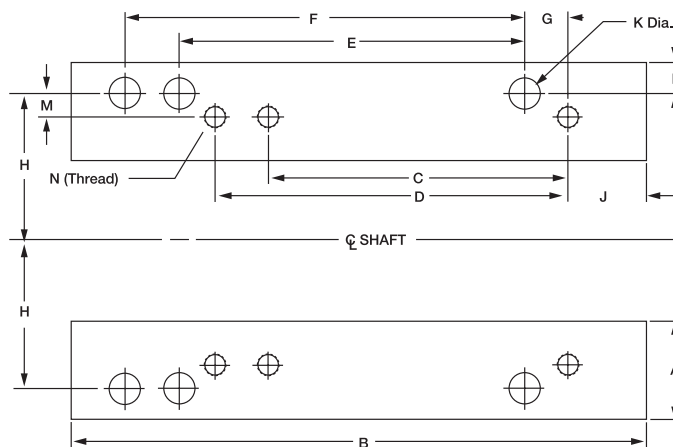


These Conversion Bases are designed to allow NEMA "T" frame motors to be used where corresponding NEMA "U" frame motors have been applied. Consisting of right and left hand pieces that fit to existing mounting studs positioned for "U" frame motors. The "T" frame motor is mounted to the pieces resulting in compensation for the difference in motor height, shaft position and mounting hole between the previous "U" frame motor and the replacement "T" frame motor. Made of the same top quality material as the adjustable motor bases.

| Catalog Number | Converts From "U" Frame | Converts To "T" Frame | List Price | Mult. Sym. | Ap'x Shpg. Wgt. | Height Inches | Width Inches | Length Inches | Thread |
|----------------|-------------------------|-----------------------|------------|------------|-----------------|---------------|--------------|---------------|---------|
| CB1814T | 182/184 | 143T/145T | 95 | A8 | 2 | 1 | 2 1/4 | 7 1/2 | 5/16-18 |
| CB2118T | 213/215 | 182T/184T | 134 | A8 | 2 | 3/4 | 1 3/4 | 9 1/2 | 3/8-16 |
| CB2521T | 254U/256U | 213T/215T | 154 | A8 | 6 | 1 | 2 7/16 | 12 3/4 | 3/8-16 |
| CB2825T | 284U/286U | 254T/256T | 209 | A8 | 7 | 3/4 | 2 3/4 | 14 1/4 | 1/2-13 |
| CB3228T | 324U/326U | 284T/286T | 288 | A8 | 9 | 1 | 3 1/4 | 15 3/4 | 1/2-13 |
| CB3632T | 364U/365U | 324T/326T | 355 | A8 | 12 | 1 | 3 11/16 | 16 1/2 | 5/8-11 |
| CB4036T | 404U/405U | 364T/365T | 487 | A8 | 20 | 1 | 4 1/4 | 18 5/8 | 5/8-11 |

NOTE: Dimensions are for one piece. Two pieces supplied. Design is for horizontal mounting. Motor shimming may be required for direct drive applications.

Conversion Bases Dimension Diagrams



| Catalog Number | Converts From | Converts To | A | B | Height | C | D | E | F | G | H | J | K | L | M | N(Thread) |
|----------------|---------------|-------------|-------|--------|--------|-------|-------|-------|-------|-------|------|------|-------|-------|------|-----------|
| CB1814T | 182-184 | 143T-145T | 2.25 | 7.50 | 1.00 | 4.00 | 5.00 | 4.50 | 5.50 | 0.50 | 3.75 | 1.00 | 0.437 | 0.50 | 1.0 | 5/16-18 |
| CB2118T | 213-215 | 182T-184T | 1.75 | 8.50 | 0.75 | 4.50 | 5.50 | 5.50 | 7.00 | 1.00 | 4.25 | 1.00 | 0.437 | 0.437 | 0.5 | 3/8-16 |
| CB2521T | 254U-256U | 213T-215T | 2.437 | 12.75 | 1.00 | 5.50 | 7.00 | 8.25 | 10.00 | 1.125 | 5.00 | 1.00 | 0.562 | 0.625 | 0.75 | 3/8-16 |
| CB2825T | 284U-286U | 254T-256T | 2.75 | 14.25 | 0.75 | 8.25 | 10.00 | 9.50 | 11.00 | 1.375 | 5.50 | 1.25 | 0.562 | 0.937 | 0.5 | 1/2-13 |
| CB3228T | 324U-326U | 284T-286T | 3.25 | 15.75 | 1.00 | 9.50 | 11.00 | 10.50 | 12.00 | 1.50 | 6.25 | 1.50 | 0.687 | 0.937 | 0.75 | 1/2-13 |
| CB3632T | 364U-365U | 324T-326T | 3.687 | 16.50 | 1.00 | 10.50 | 12.00 | 11.25 | 12.25 | 1.75 | 7.00 | 1.75 | 0.687 | 1.187 | 0.75 | 5/8-11 |
| CB4036T | 404U-405U | 364T-365T | 4.25 | 18.625 | 1.00 | 11.25 | 12.25 | 12.25 | 13.75 | 2.00 | 8.00 | 2.00 | 0.812 | 1.25 | 1.0 | 5/8-11 |

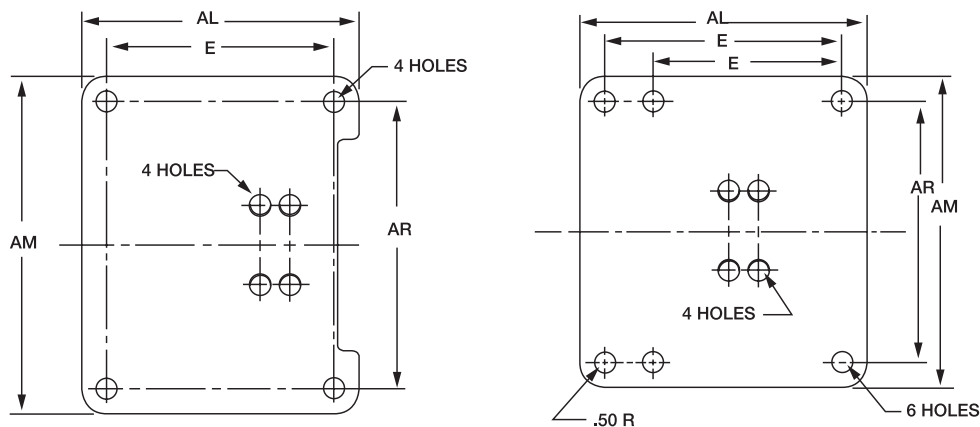
Metric Frame Weld On Bases

Heavy duty, stamped steel metric bases for welding to steel band motor designs. These give metric base mounting dimensions to NEMA frame motors.



| IEC Frame | Catalog Number | Description | List Price | Mult. Sym. | Ap'x Shpg. Wgt. |
|-----------|----------------|-------------|------------|------------|-----------------|
| D71 | MB3371 | 33/42 | 30 | A8 | 1 |
| D80 | MB3480 | 34/48-56 | 38 | A8 | 1 |
| D90 | MB3590 | 35/56-145 | 39 | A8 | 2 |
| D112 | MB36112 | 36/182-184 | 64 | A8 | 3 |
| D132 | MB37132 | 37/213-256 | 88 | A8 | 6 |

Metric Weld On Bases Dimension Diagrams



| IEC Frame | E | AL | AM | AR |
|----------------|----------------|-------|-------|-------|
| D71 | 3.531 | 4.25 | 5.125 | 4.406 |
| D80 | 3.937 | 5.125 | 6.00 | 4.921 |
| D90S D90L | 3.937 4.921 | 5.937 | 6.50 | 5.50 |
| D112S D112M | 4.50 5.50 | 6.50 | 8.625 | 7.50 |
| D132S D132M | 5.50 7.00 | 8.00 | 9.50 | 8.50 |

DIMENSIONS ARE FOR REFERENCE ONLY, CONSULT A BALDOR DISTRICT OFFICE FOR CERTIFIED DIMENSIONS

Conduit Box Kits



| Frame Size | Catalog Number | List Price | Mult. Sym. |
|--|----------------|------------|------------|
| Conduit Box Kit – Standard Size | | | |
| 56 - 140T | K56H3260 | 145 | P1 |
| 180T, 182T-4T | K18G7 | 86 | P1 |
| 210T, 213T-5 | K21G7 | 86 | P1 |
| 184T, 215T, 250, 254-6 | K25G8 | 115 | P1 |
| 254-6T, 280T, 284-6, 324-6 | K28G8 | 115 | P1 |
| 320T | K32G8 | 228 | P1 |
| 360T | K36G8 | 228 | P1 |
| 400T | K40G8 | 250 | P1 |
| 440T | K44G8 | 277 | P1 |
| Conduit Box Kit – Oversize | | | |
| 180T | K25G8 | 115 | P1 |
| 210T | K25G8 | 115 | P1 |
| 250T | K25G8 | 115 | P1 |
| 280T | K28G9 | 223 | P1 |
| 320T | K36G8 | 228 | P1 |
| 360T | K36G9 | 250 | P1 |
| 400T | K40G9 | 277 | P1 |
| 400T | K44G9 | 297 | P1 |

| NEMA Frame | Catalog Number | List Price | Ap'x Shpg. Wgt. Lbs. | Mult. Sym. |
|------------------------------------|----------------|------------|----------------------|------------|
| Conduit Box – Standard Size | | | | |
| 42 | 33CB5000A01SP | 30 | 1 | P1 |
| 42 | 33CB5001A01SP | 30 | 1 | P1 |
| 48 | 34CB5001A01SP | 29 | 1 | P1 |
| 56 - 143-5T | 35CB5001A01SP | 32 | 1 | P1 |
| 182T-4T | 36CB5001A01SP | 34 | 1 | P1 |
| 182T-4T | 36CB5001A06SP | 39 | 2 | P1 |
| 182T-4T | 36CB5001A07SP | 58 | 2 | P1 |
| 213T-5T | 37CB5002A06SP | 39 | 2 | P1 |
| 213T-5T | 37CB5002A07SP | 34 | 4 | P1 |
| 184T, 215T, 254-6 | 09CB5001A01SP | 67 | 3 | P1 |
| 184T, 215T, 254-6 | 09CB5001A15SP | 53 | 3 | P1 |
| 254-6T, 284-6, 324-6 | 10CB5001A01SP | 90 | 6 | P1 |
| 254-6T, 284-6, 324-6 | 10CB5002A01SP | 109 | 4 | P1 |

For use with Legacy Reliance Motor Designs

| Frame Size | Catalog Number | List Price | Mult. Sym. |
|--|----------------|------------|------------|
| Auxiliary Conduit Box Kits | | | |
| 180/210 | K18G21 | 102 | P1 |
| 250 | K25G23 | 112 | P1 |
| 280 | K28G23 | 131 | P1 |
| 320 | K32G23 | 139 | P1 |
| 360 | K36G16 | 260 | P1 |
| 400 | K40G3 | 277 | P1 |
| 440 | K44G5 | 591 | P1 |
| Drip Cover/Canopy Kit | | | |
| 180T | K18G2 | 152 | P1 |
| 180T | K18G19 | 152 | P1 |
| 210T | K21G2 | 191 | P1 |
| 210T | K21G19 | 191 | P1 |
| 250T | K25G3 | 462 | P1 |
| 280T | K28G3 | 554 | P1 |
| Mill and Chemical Duty Kit Cast Iron Shroud and Conduit Box | | | |
| 180T | K18G50 | 277 | P1 |
| 210T | K21G50 | 379 | P1 |
| 210T | K21G18 | 379 | P1 |
| 250T | K25G50 | 517 | P1 |
| 250T | K25G18 | 517 | P1 |
| 280T | K28G50 | 609 | P1 |
| 280T | K28G18 | 609 | P1 |
| 320T | K32G50 | 665 | P1 |
| 320T | K32G18 | 665 | P1 |
| 360T | K36G50 | 1,071 | P1 |
| 360T | K36G18 | 1,071 | P1 |
| Terminal Block Kit | | | |
| 56-140T | K56G3233 | 94 | P1 |
| 180 | K18G0060 | 213 | P1 |
| 250 | K25G0060 | 250 | P1 |
| 280 | K28G0060 | 250 | P1 |
| 320 | K32G0060 | 342 | P1 |
| 360 | K36G0060 | 517 | P1 |
| 440 | K44G0060 | 582 | P1 |
| 447 & 449 | K49G0060 | 970 | P1 |

Gearmotors and Gear Products

Motor Accessories

Grinders

Generators

Servo Motors and Controls

Mod Express

Baldor Education Workshops

Warranties and Sales Policies

Cross Reference and Index

Baldor Sales Offices

Encoder Mounting Kits

| Frame Size | Catalog Number | List Price | Mult. Sym. |
|-------------|-------------------|------------|------------|
| FL180-RL250 | 417077-170 | 1,337 | E8 |
| L280-L400 | 417077-171 | 1,337 | E8 |
| L440 | 417077-172 | 1,337 | E8 |
| FL180-RL250 | 417077-136 | 1,337 | E8 |
| FL180-RL250 | 417708-130 | 1,337 | E8 |
| L280-L400 | 417708-132 | 1,337 | E8 |
| FL180-RL250 | 417708-361 | 1,504 | E8 |
| FL180-RL250 | 417077-153 | 1,481 | E8 |
| L280-L400 | 417708-85 | 1,481 | E8 |
| L440 | 417708-121 | 2,500 | E8 |
| FL180-RL250 | 417077-156 | 1,910 | E8 |
| L280-L400 | 417708-87 | 1,910 | E8 |
| L440 | 417708-120 | 1,910 | E8 |
| FL180-RL250 | 417077-170 | 1,337 | E8 |
| FL180-RL250 | 417077-136 | 1,337 | E8 |
| FL180-RL250 | 417708-361 | 1,504 | E8 |
| FL180-RL250 | 417077-153 | 1,481 | E8 |
| FL180-RL250 | 417077-156 | 1,910 | E8 |
| FL180-RL250 | 417708-226 | 2,030 | E8 |
| FL180 | 417077-173 | 1,337 | E8 |
| RL210 | 417077-174 | 2,308 | E8 |
| RL250 | 417077-175 | 2,308 | E8 |
| L280 | 417077-176 | 1,337 | E8 |
| L320 | 417077-177 | 1,337 | E8 |
| L360 | 417077-178 | 1,337 | E8 |
| L400 | 417077-179 | 1,337 | E8 |
| FL180 | 417077-165 | 1,337 | E8 |
| RL210 | 417077-134 | 2,116 | E8 |
| RL250 | 417077-135 | 2,116 | E8 |
| L280 | 417708-131 | 1,337 | E8 |
| L320 | 417708-140 | 1,337 | E8 |
| L360 | 417708-141 | 1,337 | E8 |
| L400 | 417708-142 | 1,337 | E8 |
| L280 | 417708-96 | 1,910 | E8 |
| L320 | 417708-97 | 1,910 | E8 |
| L360 | 417708-98 | 1,910 | E8 |
| L400 | 417708-99 | 1,910 | E8 |
| RL210 | 417708-227 | 4,422 | E8 |
| RL250 | 417708-228 | 4,422 | E8 |

For use with Legacy Reliance Motor Designs

| Frame Size | Catalog Number | List Price | Mult. Sym. |
|--------------------------------|-------------------|------------|------------|
| FL180-RL210,RL250 | 417077-180 | 1,337 | E8 |
| FL180-RL210,RL250 | 417077-133 | 1,337 | E8 |
| FL180-RL210,RL250 | 417708-371 | 1,504 | E8 |
| L440 | 417708-132 | 1,337 | E8 |
| L440 | 417708-121 | 2,500 | E8 |
| L440 | 417708-120 | 1,910 | E8 |
| Encoder Only | | | |
| | 417708-230 | 1,514 | E8 |
| | 417708-231 | 1,666 | E8 |
| | 417708-232 | 1,514 | E8 |
| Stub shaft only | | | |
| | 417708-201 | 152 | E8 |
| | 417708-202 | 152 | E8 |
| | 417708-203 | 152 | E8 |
| | 417708-204 | 152 | E8 |
| | 417708-207 | 152 | E8 |
| | 417708-206 | 152 | E8 |
| | 417708-206 | 152 | E8 |
| | 417708-210 | 152 | E8 |
| | 417708-212 | 152 | E8 |
| | 417708-212 | 152 | E8 |
| | 417708-208 | 152 | E8 |
| | 417708-209 | 152 | E8 |
| | 417708-42 | 205 | E8 |
| | 417708-157 | 256 | E8 |
| Replacement Blower Kits | | | |
| RL210 | 417077-144 | 832 | E8 |
| RL250 | 417077-145 | 1,625 | E8 |
| L280 | 419947-31 | 1,620 | A8 |
| L320 | 419947-33 | 1,802 | A8 |
| L360 | 419947-35 | 2,059 | E8 |
| L400 | 417077-75 | 2,726 | A8 |
| FL180 | 417077-143 | 832 | E8 |
| RL210-RL250 | 417077-141 | 1,058 | E8 |