

## Contents

	Page
Technical characteristics Staf® .....	<b>09.02</b>
Staf® 6 .....	<b>09.03</b>
Staf® 14 .....	<b>09.04</b>
Staf® 20 .....	<b>09.05</b>
Staf® 40 .....	<b>09.06</b>

Staf

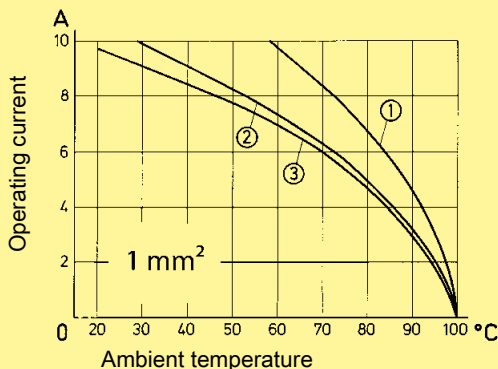
## Features

- Degree of protection for hoods/housings for coupled connector: IP 44

## Current carrying capacity

The current carrying capacity of the connectors is limited by the thermal load capability of the contact element material including the connections and the insulating parts. The derating curve is therefore valid for currents which flow constantly (non-intermittent) through each contact element of the connector evenly, without exceeding the allowed maximum temperature.

Measuring and testing techniques according to DIN EN 60 512-5



- ① Staf® 6
- ② Staf® 14
- ③ Staf® 20

## Features

Specifications DIN EN 60 664-1  
DIN EN 61 984

Approvals

### Inserts

Number of contacts 6, 14, 20, 40 (2x20)

Electrical data acc. to EN 61 984

Rated current 10 A  
Rated voltage ~ 25 V / - 60 V

Rated voltage acc. to UL/CSA 50 V

Insulation resistance ≥ 10<sup>10</sup> Ω  
Material polyamide  
Limiting temperatures -40 °C ... +100 °C

Flammability acc. to UL 94 HB  
Mechanical working life  
- mating cycles ≥ 500

### Contacts

Material copper alloy

Surface  
- hard-silver plated 3 μm Ag

Contact resistance ≤ 2 mΩ

Screw terminal  
- Wire gauge<sup>1)</sup> 1.5 mm<sup>2</sup>  
- AWG 16  
- Tightening/test torque 0.25 Nm

Solder terminal  
- Wire gauge<sup>1)</sup> 2.5 mm<sup>2</sup>  
- AWG 14

In accordance with the appropriate regulations a wire-end sleeve has to be used at clamps without wire protection (see „Screw terminal“, chapter 00).

Hoods/Housings see chapter 30 / 31

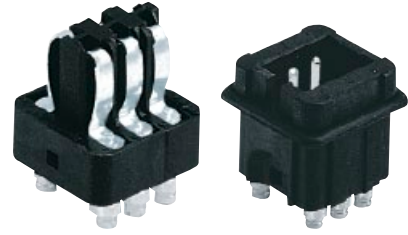
### Accessories


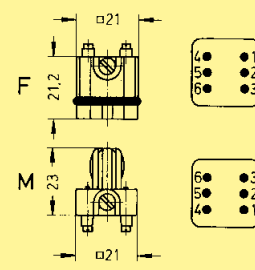

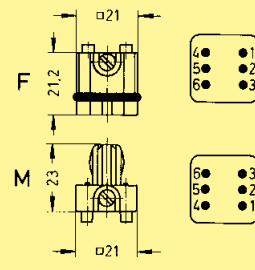
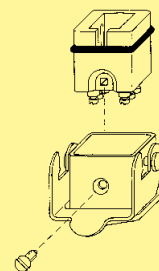
Cable clamps chapter 40  
Coding of hoods/housings chapter 40  
Label acc. to CSA-approval chapter 40

<sup>1)</sup> geometric wire gauge

Number of contacts

6



Identification	Series	Part number		Drawing	Dimensions in mm
		Female Insert (M)	Male insert (F)		
<p>Screw terminal</p> 	Staf®	<b>09 70 006 2813</b>	<b>09 70 006 2616</b>	<p>Contact arrangement (view from termination side)</p> 	
<p>Solder terminal</p> 	Staf®	<b>09 70 006 2812</b>	<b>09 70 006 2615</b>	<p>Contact arrangement (view from termination side)</p>  <p>Mounting example</p> 	

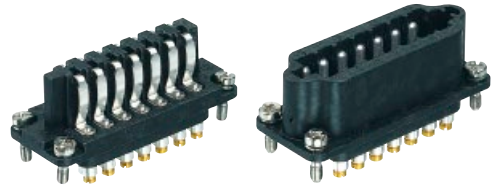
Staf

09  
03

Stock items in bold type

Number of contacts

14



Staf

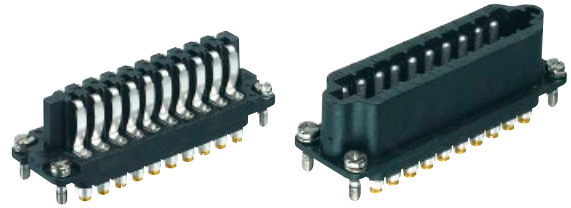
Identification	Series	Part number		Drawing	Dimensions in mm
		Female Insert (M)	Male insert (F)		
<p>Screw terminal</p>	Staf®	<b>09 70 014 2811</b>	<b>09 70 014 2614</b>	<p>1) Distance for contact max. 24 mm</p> <p>Contact arrangement (view from termination side)</p>	
<p>Solder terminal</p>	Staf®	<b>09 70 014 2810</b>	<b>09 70 014 2613</b>	<p>Panel cut out for inserts for use without hoods/housings</p>	


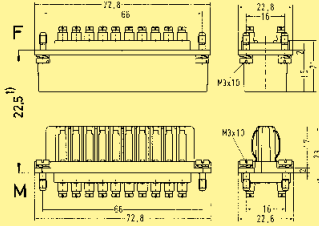
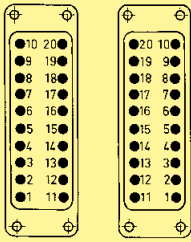

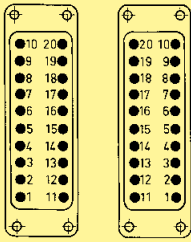
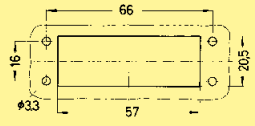
09  
04

Stock items in bold type

Number of contacts

20

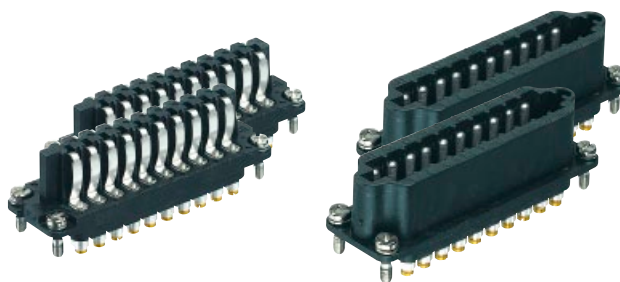


Identification	Series	Part number		Drawing	Dimensions in mm
		Female Insert (M)	Male insert (F)		
<p>Screw terminal</p> 	Staf®	<b>09 70 020 2817</b>	<b>09 70 020 2622</b>	 <p>1) Distance for contact max. 24 mm</p> <p>Contact arrangement (view from termination side)</p> 	
<p>Solder terminal</p> 	Staf®	<b>09 70 020 2816</b>	<b>09 70 020 2621</b>	 <p>Panel cut out for inserts for use without hoods/housings</p> 	

Stat

Number of contacts

40



Staf

Part number

Identification Series Female Insert (M) Male insert (F) Drawing Dimensions in mm

Screw terminal

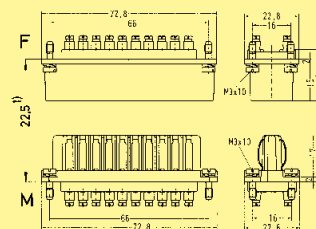


Staf®

1-20  
1-20

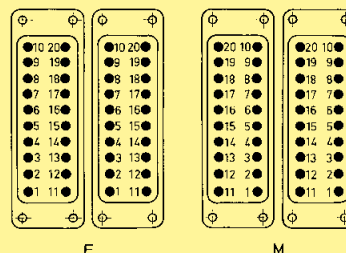
**09 70 020 2817**  
**09 70 020 2817**

09 70 020 2622  
09 70 020 2622



1) Distance for contact max. 24 mm

Contact arrangement (view from termination side)



Solder terminal



Staf®

1-20  
1-20

**09 70 020 2816**  
**09 70 020 2816**

**09 70 020 2621**  
**09 70 020 2621**

Panel cut out for inserts  
for use without hoods/housings

