

Corporate Overview

GP-Pro EX HMI
Software

AGP3000 Hardware
Specifications

AGP3000 Series
Operator Interface

Pro-Server EX
Data Management
Software

HMI Connectivity
and Accessories

Pro-face®



AGP3000 Series: Advanced Operator Interfaces for the Competitive Edge

xycom.com

CELEBRATING
35 Years
of Industrial
Automation
Solutions

Pro-face®
XYCOM™

The Best in Human Machine Interfaces



**Globally recognized,
globally supported,
globally trusted.**



- ||| We are the leading independent global supplier of industrial computing and visualization solutions for automation and manufacturing applications.
- ||| We continue to set the standards for HMI solutions by offering the industry's most extensive product offerings and the highest levels of connectivity and support.

Pro-face HMI Operator Interfaces

Programmable graphic HMIs



- 3.8" to 15" crisp, clear HMI displays
- TFT, STN color or mono touch screens
- Data sharing & collection through OPC, DDE, SQL, etc.
- Web-enabled & remote monitoring capabilities
- Large selection of controller connectivity
- Ethernet, USB, RS232, RS422/485 and CompactFlash™ interfaces
- Full-featured HMI screen editor software

HMI logic controllers



- 5.7" to 12.1" dedicated touch-screen logic controllers
- Supports local or distributed I/O applications
- Low-cost standalone or networked units
- TFT color and mono graphics displays
- Large selection of protocol connectivity
- Data sharing & collection through CompactFlash, OPC, DDE, SQL, etc.

Xycom HMI Industrial Computers & Monitors

Industrial computers



- 8.4" up to 15" TFT displays
- Up to 1024 x 768 XGA resolution
- Intel® Pentium III and 4 CPUs
- Up to 2.4 GHz processor speed
- UL, cUL HazLoc approvals
- NEMA 4/4X/12 front panel ratings
- Touch screens and/or keypads
- Extensive I/O connectivity
- 20 years of cutout compatibility

Flat-panel monitors



- 10" up to 19" TFT displays
- Up to 1280 x 1024 SXGA resolution
- NEMA 4/4X/12 front panel ratings
- UL, cUL HazLoc approvals
- Touch screens and/or keypads
- Adapters for cutout compatibility

World-class HMI products, service, support and reliability.

Advanced operator interfaces for the competitive edge

AGP 3700 Series

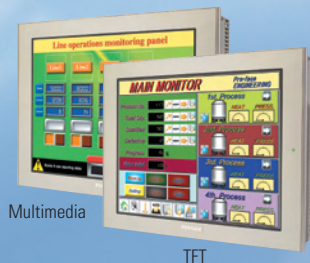
15"



Multimedia TFT

AGP 3600 Series

12.1"

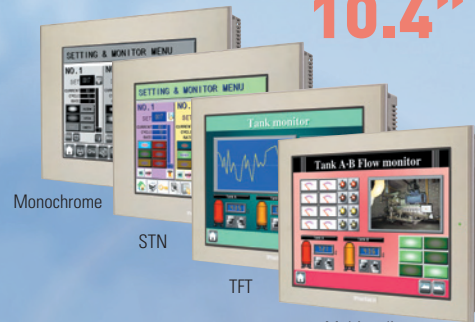


Multimedia

TFT

AGP 3500 Series

10.4"



Monochrome

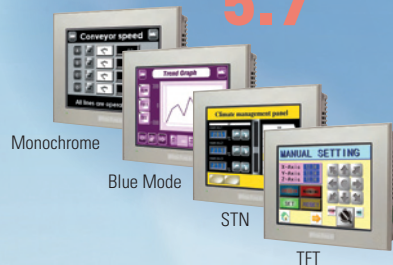
STN

TFT

Multimedia

AGP 3300 Series

5.7"



Monochrome

Blue Mode

STN

TFT

Screen Editor
GP-Pro EX
Intuitive HMI development
environment supporting all
AGP3000 units

AGP 3400 Series

7.5"



Multimedia

STN

TFT

An extensive line of HMI operator interfaces with the features you need, designed to lower your costs and improve your manufacturing processes

- ✓ **Lowers your HMI development cost**
 - Easy-to-learn, self-guiding HMI development environment requires less time to master
 - Extensive, built-in, time-saving features help you develop fast, consistent, standardized graphical interfaces
- ✓ **Increases your productivity & product quality**
 - Monitor, collect, analyze and report up-to-the-minute production data using Pro-Server EX data management software
 - AGP3000's extensive connectivity allows you to choose best-in-class complementary products, such as PLCs, drives and controllers, to match your application needs – without worrying about compatibility
- ✓ **Supports a more responsive and efficient work force**
 - Use multimedia features to create detailed audio and visual standardization maintenance guides
 - Gain instant access to machine training videos at each operator workstation
- ✓ **Reduces machine downtime**
 - Use Event Recorder to capture machine faults
 - Link video playback to alarm conditions
 - Play instructional videos to help you quickly isolate and correct the problem
 - Reduce your on-site field support calls by using remote maintenance feature

All the Best Features in One Product Family

HMI operator interface solutions

- Data management solutions
- Multimedia HMI solutions
- HMI Control Solutions
- Built-in security HMI solutions
- Distributed & integrated I/O solutions
- Point-to-point data-sharing HMI solutions

Connectivity

- Ethernet
- Audio/video
- USB
- CompactFlash™
- RS-232/422/485
- Multi-protocol

Performance

- Crisp, clear, bright displays
- Wide viewing angles
- No-grid, analog touch screen
- 65K color support
- 64-bit RISC CPU
- Fast data sampling

Get More From Your HMI With Pro-Server EX

Data management software

Pro-Server EX

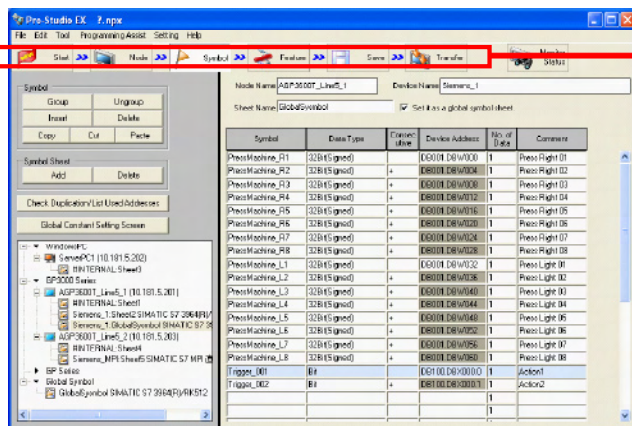
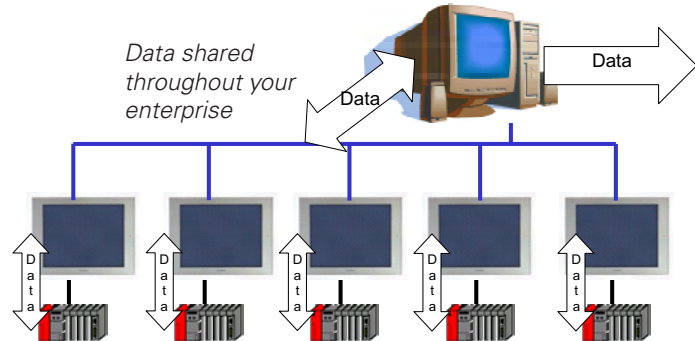
Data Management

Enhanced connectivity software

Up-to-the-minute, accurate data to optimize your productivity and maximize profits.

Collect, monitor and share factory-floor data:

- When you need it
- Where you need it
- With those who need it



Fast and simple setup

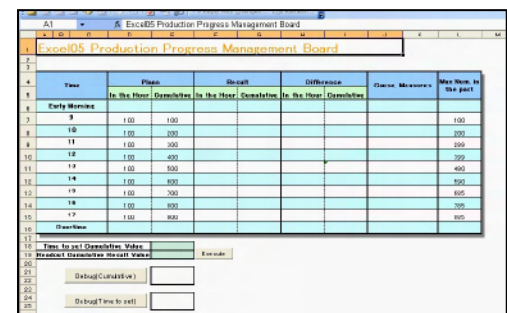
- Fill-in-the-blank data configuration, no programming!
- Built-in templates save you time and get you started quickly
- Shares data with Windows®-based applications
- Up-to-the-minute production data
- Collect and share data with multiple AGP HMIs and other departments

Includes 29 easy-to-use Excel® templates

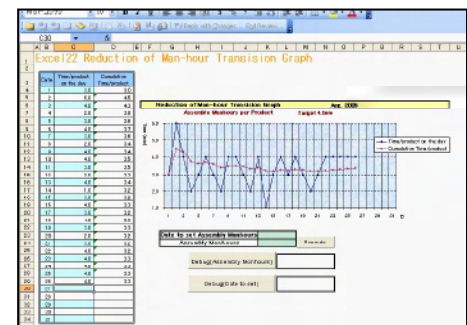
- Daily/monthly/yearly report
- Downtime shift
- Failure rate data
- Preparation time graph
- Direct first-run graph

Report examples

Production Planning and Product Output Monitoring



Up-to-the-minute Productivity Efficiency Reports



Create the report you need in minutes!

- Select data
 - Choose data operation
 - Update network
- No programming required!**

Factory-Floor Data at Your Fingertips

Get the competitive edge.

Information where you want it, when you want it.



Pro-Server EX

Architecture Overview

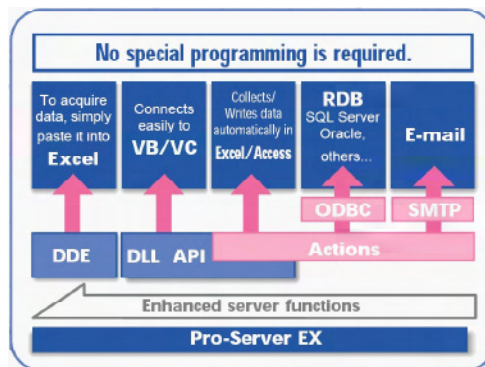
Pro-Server EX is cost-effective data management software that allows data collected by Pro-face operator interfaces to be shared and directly integrated into your existing MRP, MES business system or any Windows-based application. No additional drivers or software needed! Pro-Server EX takes advantage of all the protocol connectivity built into GP-Pro EX, allowing you to share data anywhere.

Architecture overview

Connectivity support

DDE
API (for VB or VC++)
SMTP e-mail
DLL
ODBC
Excel
Access
SQL Server

*Requires: Windows® 2000
(Service Pack 3 or later),
Windows® XP Home Edition/
Professional or/Server Intel
Pentium® III 500MHz or more*



Applications

- Share HMI data with your PC server
- Share HMI data with another HMI
 - Peer-to-peer data sharing with any Ethernet-based Pro-face HMI
- Write data to and log data from PLC
- Send e-mail to desktop, cell phone, pager, via SMTP
- Collect and write data
 - In Excel, CSV file, to or from database

**Integrate into your existing enterprise system.
Save your budget, and save thousands of dollars per year!**

GP-Pro EX

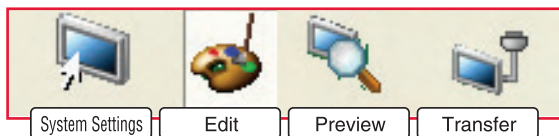
SELF-GUIDING

Intuitive HMI Screen Development Editor

With GP-Pro EX's simple four-step navigation process, HMI development has never been easier – or faster

Four Simple Steps

- III Icons across the top of the editor guide you through the four basic steps of screen editing with GP-Pro EX software!

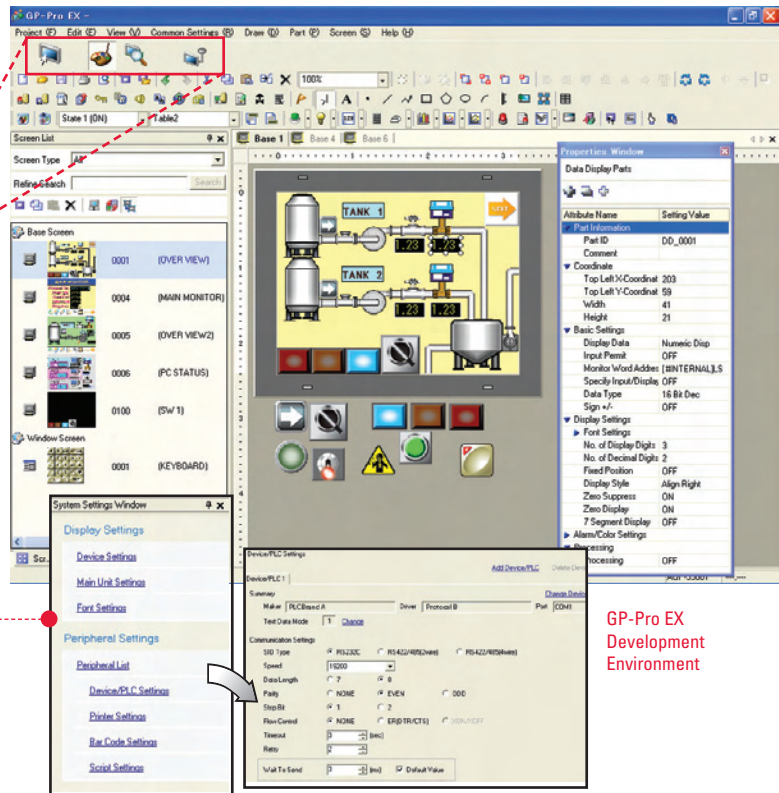


1

ESTABLISH SYSTEM SETTINGS

III Intuitive Communication Set-up

- Configure up to four different protocols that operate simultaneously
- One-step bar-code reader setup
- Scripting functions for interfacing to custom or proprietary third-party devices
- Lists recently used devices for fast access to relevant controllers



2

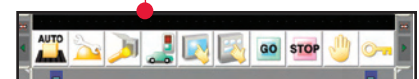
EDIT SCREENS

- III **Powerful, full-featured HMI editor for fast screen development**
Create complex HMI screens and reusable templates in minutes!

- Huge graphic parts library with high-resolution 2D and 3D part images
- Create standardized header and footer templates
- Multi-functional switches with on/off delay two-touch function
- Use any Windows®-based font for crisp and smooth, easy-to-read text, plus unlimited character sizing
- Double-click on a part to pop up its attribute window for easy editing
- Drag and drop parts between two projects – edit both simultaneously!



More than
1800 parts
and symbols



One-click access to multiple user-defined headers (i.e. title) and footers (i.e. menu) for perfect placement. Edits to headers/footers update all screens simultaneously!

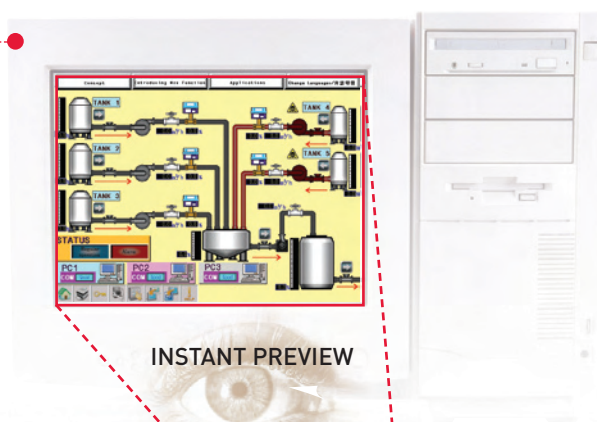
3

PREVIEW YOUR APPLICATION SCREENS

III Preview your HMI application on your PC and spare yourself from unnecessary downloads.

Review your HMI screens on your PC to fine-tune the look and feel of your application. **Saves valuable time!**

- Allows you to enter data and preview the results, enhancing screen development
- **Built-in documentation** support feature allows you to quickly create an HMI specification based on selected criteria
 - Add screen captures to create clear specifications for engineering documents



4

TRANSFER YOUR APPLICATION...AND GO!

III Download your applications *in seconds, not minutes!*

Large HMI projects? No problem. The **ultra-fast AGP3000 64-bit RISC processor** provides speedy and efficient application upload and download file transfers.

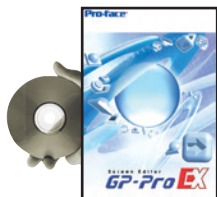
- **Built-in, powerful error-checking features**
 - GP-Pro EX will automatically check for errors before downloading your project
 - If an error is detected, a new status window opens to quickly indicate the error and where it occurs within your application
- **Download your HMI application through the Ethernet or USB ports**
- **Do field upgrades using the CompactFlash™ port – no software required!**



Fast Application Transfer

AGP3000

GP-Pro EX



GP-Pro EX. Designed for the beginner, but powerful enough to satisfy even the most experienced HMI developer.

- Create highly detailed and secure applications
- Speed up development with extensive time-saving features
- Interface to any controller with extensive built-in connectivity

Start today!

Download a trial version today at www.xycom.com.

GP-Pro EX – The Features You Depend On

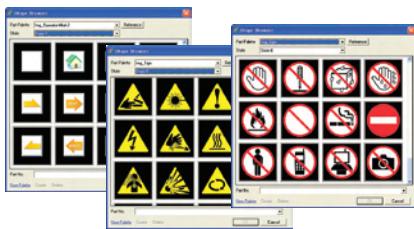


HMI Screen Editor

Self-guiding software for all
AGP3000 Series HMI models

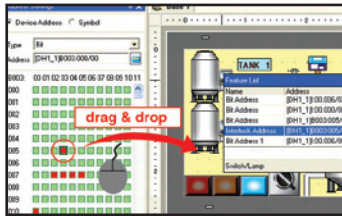
All the tools you need to create
highly functional, friendly and
versatile HMI applications

Setup, graphics and editing



Extensive image parts, symbols & fonts library

- Over 1,800 high-quality 3D parts provide international recognition of symbols - overcoming language barriers.
- BMP and JPG files can be freely placed and reduced/enlarged with high clarity.
- Windows®-based image fonts provide a wide range of font characters and crisp, readable text with unlimited sizing capabilities.

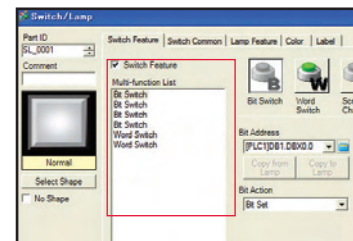


Visual PLC address mapping

- Smart visual address mapping for fast PLC-address-to-part communication connections
- Drag and drop PLC address onto part to quickly link controller address to pushbutton, tank, graph, etc.
- Gives a quick visual check on how each part is mapped to controller or I/O device
- Significantly reduces screen development time
- Quick indication of what controller addresses are still available

Multi-action switches

- Execute multiple actions with one switch
- No need to stack switches, leading to possible operator error
- Choose Bit Switch, Word Switch, Set Action setting, PLC Address, etc.



Easy bar-code reader setup

- As simple as enabling the COM port the reader is connected to
- Data is instantly displayed on the screen or can be logged
- Use for parts tracking or identifying machine operator



Part property window

- Property Window for quick review and changes of objects.
- Change part or symbol
- Change part attribute colors
- PLC communication address
- Part function type (e.g. Momentary to Toggle)

CompactFlash™ (CF card)

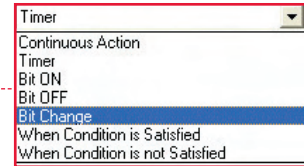
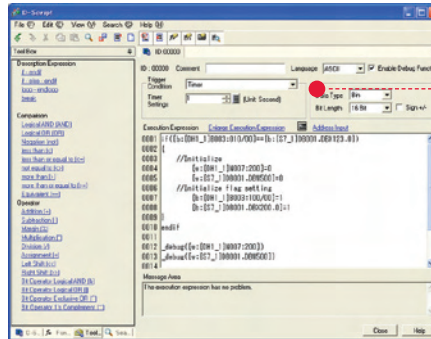
- Download HMI application to CompactFlash
- OEM machine field upgrades - no software needed!
- Log critical data to CF card for later retrieval and analysis
- Store large image files



User-defined macro functionality

Powerful D-scripting

- III Extend your serial communications capabilities!
Write your own simple ASCII protocol to communicate to custom controllers, third-party I/O boards, and interface to legacy plant-floor equipment
- III Create data logging algorithms – log to internal memory, CompactFlash, or print directly from AGP's touch screen, etc.
- III Develop custom functions (macros) to execute a sequence of events.

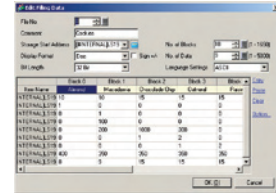


Select from various types of triggers for maximum flexibility of operations.

Advanced functionality

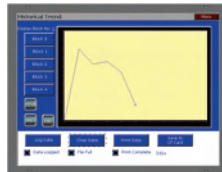
Recipes

- III Create hundreds of recipes and load them from internal memory or CompactFlash (CF) card
 - View all recipes on one screen or use multiple screens
 - Transfer recipe values to and from PLC
 - Create recipes via CSV files and transfer to AGP3000. Lets you write recipes in Excel® or other documents



Data logging and historical trending

- III Store data to CompactFlash (CF) or to a PC server for report generation
- III View data from AGP3000 in historical graph format
- III Real-time report generation



Alarms and events

- III Quick visual of current, event-triggered and historical alarms
- III View list and review detailed alarm descriptions
- III Acknowledge alarms and take action or Reset and Revert back to normal operating mode

Security pop-up keypads

- III Keep unauthorized users from viewing or modifying critical areas of your HMI application
 - Built-in 16 security level features to view and/or modify screens, system design
 - View data based on access level (e.g. production operator, maintenance personnel, plant-floor supervisor, HMI design engineer, etc.)



Various types of numeric and alpha-numeric keypads are available.

Time scheduling

- III Standardize equipment start-up times
- III Monitor productivity from each production shift
- III Set up periodic routine maintenance schedules
- III Use time scheduler to limit access to machine operations



Multi-language

- III Supports up to 16 different languages simultaneously
- III English, French, German, Spanish, Asian languages, etc.
- III Operators can view all screen images in the language of their choice

Text Table		Jump				Language Table 1				Language Table 2				Chinese Table			
No.	of Characters	1	2	3	4	1	2	3	4	1	2	3	4	1	2	3	4
1	10	1	10	1	10	1	10	1	10	1	10	1	10	1	10	1	10
2	10	1	10	1	10	1	10	1	10	1	10	1	10	1	10	1	10
3	10	1	10	1	10	1	10	1	10	1	10	1	10	1	10	1	10
4	10	1	10	1	10	1	10	1	10	1	10	1	10	1	10	1	10
5	10	1	10	1	10	1	10	1	10	1	10	1	10	1	10	1	10
6	10	1	10	1	10	1	10	1	10	1	10	1	10	1	10	1	10
7	10	1	10	1	10	1	10	1	10	1	10	1	10	1	10	1	10
8	10	1	10	1	10	1	10	1	10	1	10	1	10	1	10	1	10
9	10	1	10	1	10	1	10	1	10	1	10	1	10	1	10	1	10

AGP3000 Multimedia Features

Multimedia: A new world of possibilities for HMI developers

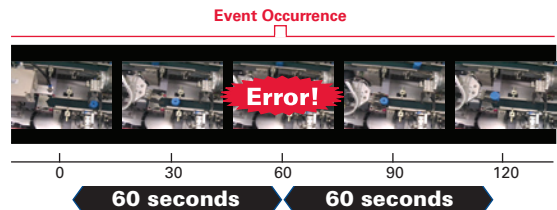
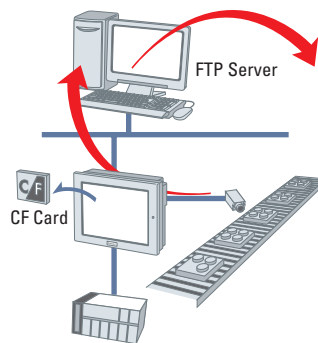
Now you can do what you always wanted to do:

- **Capture the moment**
Record the events that lead to machine breakdown
- **Create online audio/video machine tutorials.**
Keeps the operator trained with latest procedures
- **Record and play back audio**
Leave audio messages or instructions for next shift operator
- **Reduce downtime**
 - Use the movie converter software for instructor-type maintenance procedures
 - Use video cameras for remote monitoring and troubleshooting machines

**Make a good impression –
Enhance the operator interface experience.**

Event recorder

III You can record video and audio from a video camera connected to the built-in AGP3x50 multimedia ports. Store files on CompactFlash or place on FTP server connected to the AGP unit via Ethernet.

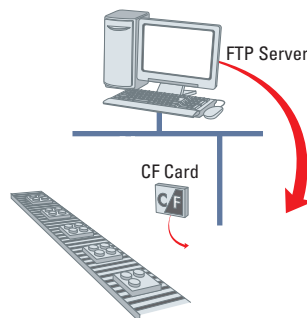


When a predefined event is triggered, video before and after the event (max. 120 sec.) is automatically recorded and stored as a log.

Fast & accurate troubleshooting

Movie file playback

III You can use the display of the AGP3000 to play back movie files. Simply select the desired files from a CompactFlash card or FTP server. You can also loop a series of movies.



It's easy to add movies to on-site instruction screens for better comprehension.



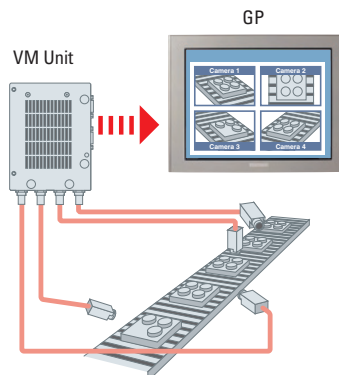
And now, you can create movie files with commercially available video software.

Note: Movie files you create must be converted with the Movie Converter EX converter tool, which requires the purchase of a license.

Video mix unit connection

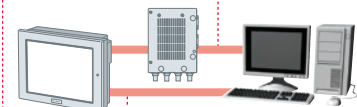
III With a VM unit (optional), visual monitoring of work details and conditions on the production site is available in real time. Up to four cameras can be connected, with all four images displayed simultaneously on one AGP3000 screen.

Note: Not all models can connect the VM unit.



GP can control a PC by displaying the PC screen on GP by using a VM unit.

RGB input (for display)



Serial communications
(for mouse emulation)

Note: Downloading Touch Panel Driver is necessary.

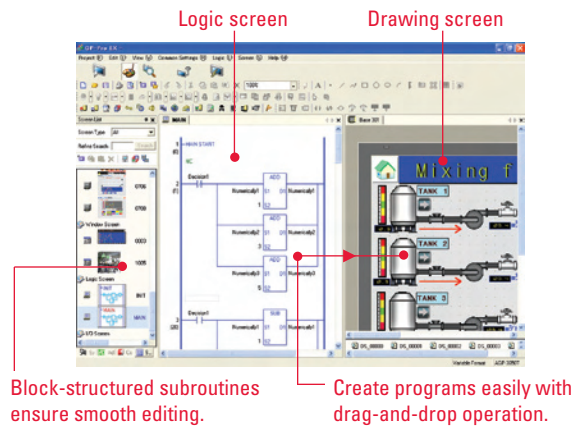
AGP3000 HMI Control – More Horsepower Under the Hood

HMI control: Operator interfaces with built-in logic programming

More capabilities and features for demanding HMI applications

Logic program

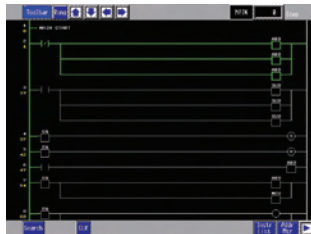
- III Develop logic programs and algorithms, as well as your HMI screen application, using the same AGP3000 development environment.
- III Import logic programs created from previous versions of GP-Pro/PBIII C-Package for easy upgrade to AGP3000 products.
- III Symbols for drawing/editing images and variables for creating logic programs are unified.
- III Symbol variables for drawing images and creating logic programs are not required to be imported or exported.
- III Block-structured subroutines reduce steps for development and management of logic programs.



Now, added instructions for greater use of use.

Logic monitoring function

- III You can use a variety of AGP monitoring screens to check logic programs.
- III English/Japanese display is selectable.



Logic display

Displays an entire logic program so you can check the operating status and the layout of instructions.



Address display

The addresses used in a logic program are listed so you can verify the names and current values of variables.

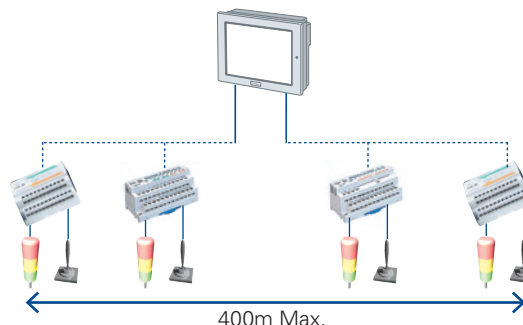
Build a Complete HMI Control System

Create an entire distributed I/O graphical HMI application using Pro-face AGP3000 HMI, GP-Pro EX HMI development software and any combination of Pro-face Flex Network I/O modules.

Features include: timers, counters, logical operations, mathematical, bit operation, etc. Mix and match any combination of analog and digital I/O modules.

63 stations max.

- 256 input points max.
- 256 output points max.
- 64 integer inputs max.
- 64 integer outputs max.



Use one HMI and control development environment to minimize the number of software packages you need to maintain and significantly reduce your support and maintenance costs.

AGP3000 Series HMI Operator Interface and HMI Control

AGP3000 Series Lineup

15 inch



12.1 inch



10.4 inch



AGP-3750T



Display

- TFT Color LCD (65K colors)
- Resolution: 1024 x 768
- Analog Resistive Touch Screen (no grid)

Ports

- Ethernet: 10Base-T/100Base-TX
- USB: Two USB 1.1 Host Type A
- Video: One NTSC, PAL, SECAM input
- Audio input: Microphone input¹
- Speaker output: 70mW
- COM Port 1: RS-232/422/485
- COM Port 2: RS-422/485
- CompactFlash card slot Type II
- Expansion bus port for optional communication modules

Environmental

- Operating temperature: 0° to 50° C
- Ratings: NEMA 4x/13, IP65f
- Humidity: 10-90% RH non-condensing
- External dimensions:
W395mm [15.55in] x H294mm [11.57in]
x D60mm [2.36in]

AGP-3650T -3600T



Display

- TFT Color LCD (65K colors)
- Resolution: 800 x 600
- Analog Resistive Touch Screen (no grid)

Ports

- Ethernet: 10Base-T/100Base-TX
- USB: Two USB 1.1 Host Type A
- Video: One NTSC, PAL, SECAM input¹
- Audio input: Microphone input¹
- Speaker output: 70mW
- COM Port 1: RS-232/422/485
- COM Port 2: RS-422/485
- Video mix module support
- CompactFlash card slot Type II
- Expansion bus port for optional communication modules
- Flex Network I/O module support²
- Built-in 6-input/2-output sink/source³

Environmental

- Operating temperature: 0° to 50° C
- Ratings: NEMA 4x/13, IP65f
- Humidity: 10-90% RH non-condensing
- Ext. dimensions: W313mm [12.31in]
x H239mm [9.41in] x D56mm [2.2in]

AGP-3550T -3500T



Display

- TFT Color LCD (65K colors)
- STN Color LCD (4,096 colors)
- Monochrome LCD (16 shades B/W)
- Resolution: 640 x 480
- Analog Resistive Touch Screen (no grid)

Ports

- Ethernet: 10Base-T/100Base-TX
- USB: Two USB 1.1 Host Type A
- Video: One NTSC, PAL, SECAM input¹
- Audio input: Microphone input¹
- Speaker output: 70mW
- COM Port 1: RS-232/422/485
- COM Port 2: RS-422/485
- Video mix module support*
- CompactFlash card slot Type II
- Expansion bus port for optional communication modules**
- Flex Network I/O module support²
- Built-in 6-input/2-output sink/source³

* AGP3500T, AGP3550T HMI units only

**Expansion bus and video mix unit cannot be used simultaneously.

-3500S -3500L

Environmental

- Operating temperature: 0° to 50° C
- Ratings: NEMA 4x/13, IP65f
- Humidity: 10-90% RH non-condensing
- External dimensions – TFT models:
W270.5mm [10.65in] x
H212.5mm [8.37in] x
D57mm [2.24in]
- External dimensions –
STN & Mono models:
W313mm [12.32in] x
H239mm [9.41in] x
D56mm [2.2in]

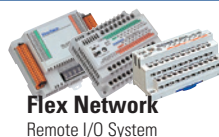
		AGP-3750		AGP-3600/3650		AGP-3500/3550				
Display Type		TFT		TFT		TFT		STN		Mono
Rated Voltage		AC100-240V	DC24V	AC100-240V	DC24V	AC100-240V	DC24V	AC100-240V	DC24V	DC24V
Advanced Multimedia		AGP3750-T1-AF	AGP3750-T1-D24	AGP3650-T1-AF		AGP3550-T1-AF				
HMI Control Integrated	DIO Sink			AGP3600-T1-AF-D81K	AGP3600-T1-D24-D81K	AGP3500-T1-AF-D81K	AGP3500-T1-D24-D81K	AGP3500-S1-AF-D81K	AGP3500-S1-D24-D81K	
	DIO Source			AGP3600-T1-AF-D81C	AGP3600-T1-D24-D81C	AGP3500-T1-AF-D81C	AGP3500-T1-D24-D81C	AGP3500-S1-AF-D81C	AGP3500-S1-D24-D81C	AGP3500-L1-D24-D81C
	Flex Network			AGP3600-T1-AF-FN1M	AGP3600-T1-D24-FN1M	AGP3500-T1-AF-FN1M	AGP3500-T1-D24-FN1M			
Standard HMI				AGP3600-T1-AF	AGP3600-T1-D24	AGP3500-T1-AF	AGP3500-T1-D24	AGP3500-S1-AF	AGP3500-S1-D24	AGP3500-L1-D24

¹AGP3x50 models only

²Discrete I/O AGP3000 "-FN1M" HMI units only

³AGP3000 "-D81K" and "-D81C" HMI units only

Pro-face's uniquely advanced approach to connectivity enables the AGP3000 Series to support existing equipment while accommodating future expansion.



Profibus
Profibus Slave Unit
(CA5-PFSALL/EX-01)

7.5 inch



5.7 inch



AGP-3450T -3400S
-3400T

DC24V     

Display

- TFT Color LCD (65K colors)/STN Color LCD (4,096 colors)
Monochrome LCD (16 shades B/W)
- Resolution: 640 x 480
- Analog Resistive Touch Screen (no grid)

Ports

- Ethernet: 10Base-T/100Base-TX
- USB: One USB 1.1 Host Type A
- Video: One NTSC, PAL, SECAM input (AGP3450T only)
- Audio input: Microphone input (AGP3450T only)
- Speaker output: 70mW
- COM Port 1: RS-232/422/485
- COM Port 2: RS-422/485
- CompactFlash card slot Type II
- Expansion bus port for optional comm. modules
- Flex Network I/O module support²
- Built-in 6-input/2-output sink/source³

Environmental

- Operating temperature: 0° to 50° C
- Ratings: NEMA 4x/13, IP65f
- Humidity: 10-90% RH non-condensing
- External dimensions: W215mm [8.46in] x H170mm [6.69in] x D60mm [2.36in]

AGP-3300T -3301S
-3300S -3301L
-3300L -3302B

DC24V     

Display

- TFT Color LCD (65K colors)
- STN Color LCD (4,096 colors)
- Monochrome LCD (16 shades B/W)
- Blue/white mode LCD (16 shades)
- Resolution: 320 x 240
- Analog Resistive Touch Screen (no grid)

Ports

- Ethernet: 10Base-T/100Base-TX*
- USB: One USB 1.1 Host Type A
- COM Port 1: RS-232/422/485**
- COM Port 2: RS-422/485
- CompactFlash card slot Type II***
- Expansion bus port for optional comm. modules
- Flex Network I/O module support²
- Built-in 6-input/2-output sink/source³

Environmental

- Operating temperature: 0° to 50° C
- Ratings: NEMA 4x/13, IP65f
- Humidity: 10-90% RH non-condensing
- External dimensions: W167.5mm [6.59in] x H135mm [5.31in] x D59.5mm [2.34in]

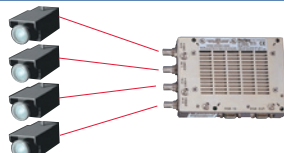
*Ethernet interface not available on AGP-3301 and AGP-3302 models.

**For model AGP-3302B, COM port 1 is RS232C only.

***CF card interface is not available on model AGP-3302B.

		AGP-3400/3450		AGP-3300/01/02					
				00			01		02
Display Type		TFT	STN	TFT	STN	Mono	STN	Mono	Blue
Rated Voltage		DC24V	DC24V	DC24V	DC24V	DC24V	DC24V	DC24V	DC24V
Advanced Multimedia		AGP3450-T1-D24							
HMI Control Integrated	DIO Sink	AGP3400-T1-D24-D81K	AGP3400-S1-D24-D81K	AGP3300-T1-D24-D81K	AGP3300-S1-D24-D81K	AGP3300-L1-D24-D81K			
	DIO Source	AGP3400-T1-D24-D81C	AGP3400-S1-D24-D81C	AGP3300-T1-D24-D81C	AGP3300-S1-D24-D81C	AGP3300-L1-D24-D81C			
	Flex Network	AGP3400-T1-D24-FN1M		AGP3300-T1-D24-FN1M		AGP3300-L1-D24-FN1M			
Standard HMI		AGP3400-T1-D24	AGP3400-S1-D24	AGP3300-T1-D24	AGP3300-S1-D24	AGP3300-L1-D24	AGP3301-S1-D24	AGP3301-L1-D24	AGP3302-B1-D24

Video
Mix Unit
I/F

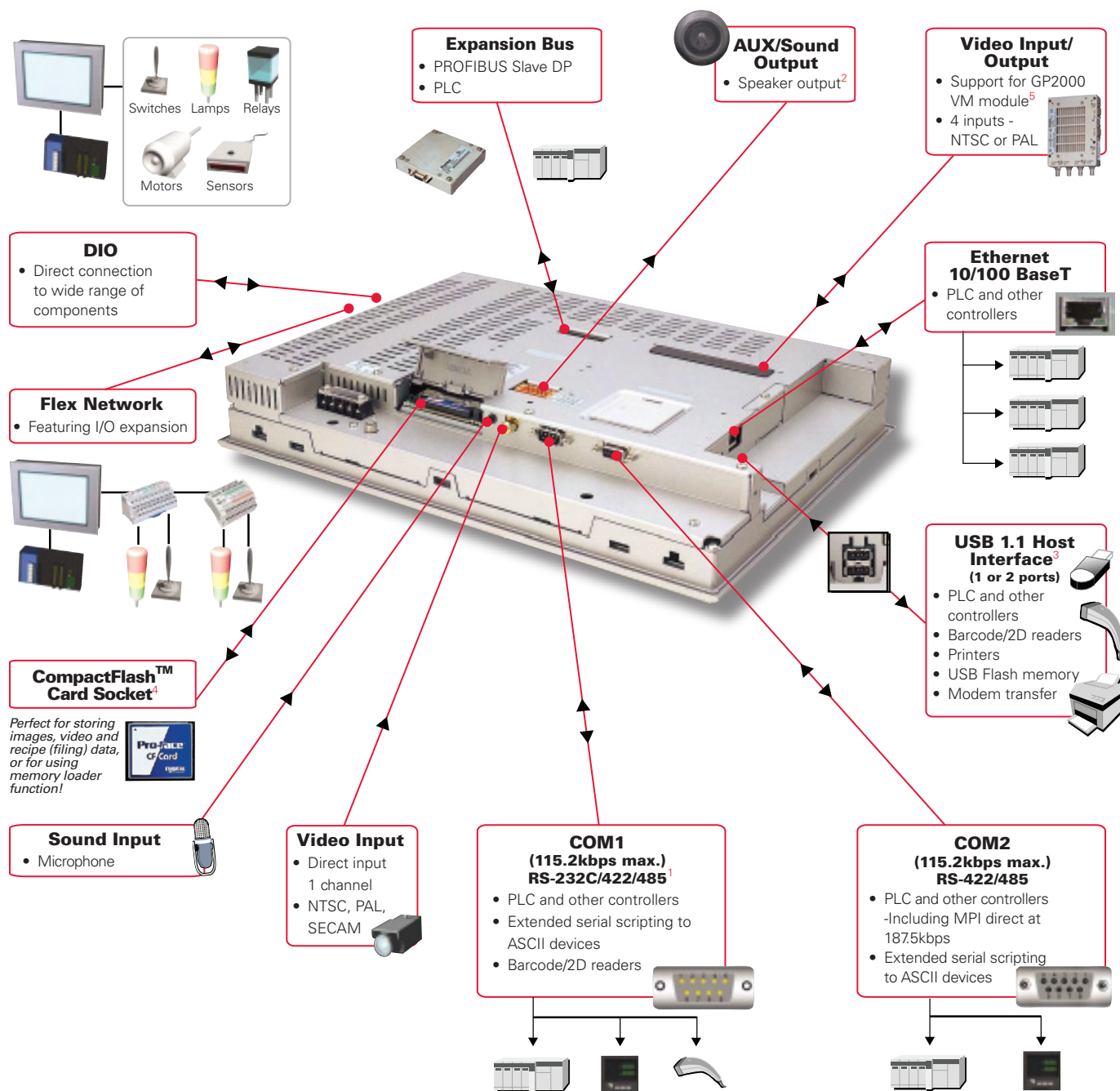


Video Mix Unit Interface

with four-camera NTSC/PAL input +RGB in/out
(GP2000-VM41)

The only HMI you need.

The AGP3000's extensive array of connectivity options makes it easy to standardize on one HMI model.



¹ AGP3302-B type model only has RS-232C asynchronous transmission

² AGP34xx, 35xx, 36xx and 37xx models include AUX/sound outputs
Sounds must be converted from .WAV format

³ Requires CA3-USBCB-01 for transfer of screen data

⁴ Not available on 3302B

⁵ Compatible with AGP35xxT and 36xxT TFT display models only

- These interfaces represent the entire line of AGP3000 products. See data sheets for individual model specifications.
- USB - See driver list for supported third-party devices
- Up to four PLC protocols simultaneously (AGP33xx supports two).
- Please refer to documentation for allowable configurations.

Interface to Virtually Anything on the Factory Floor!

Interface/Model	3302B	3300L/S/T	3400S/T	3450T	3500L/S	3500T	3550T	3600T	3650T	3750T
COM1 (115.2kbps max.) RS-232C/422/485	Yes (RS232C ONLY) DB9 Socket Type	Yes	Yes	Yes	Yes	Yes	Yes	Yes	Yes	Yes
COM2 (115.2kbps max.; 187.5kbps for MPI direct) RS-422/485	Yes	Yes	Yes	Yes	Yes	Yes	Yes	Yes	Yes	Yes
Ethernet 10/100 BaseT	-	Yes	Yes	Yes	Yes	Yes	Yes	Yes	Yes	Yes
USB 1.1 Host Interface	1 port	1 port	1 port	1 port	2 ports	2 ports	2 ports	2 ports	2 ports	2 ports
CompactFlash Card Socket	-	Yes	Yes	Yes	Yes	Yes	Yes	Yes	Yes	Yes
Expansion Bus	Yes	Yes	Yes	Yes	Yes	Yes	Yes	Yes	Yes	Yes
Video	-	-	-	1 Ch Video In	-	-	1 Ch Video In	-	1 Ch Video In	1 Ch Video In
GP2000-VM41 Support	-	-	-	Yes	-	Yes	Yes	Yes	Yes	-
Sound	-	-	Yes	Yes ¹	Yes	Yes ¹	Yes ¹	Yes	Yes ¹	Yes ¹
DIO	-	Yes ²	Yes ²	-	Yes ²	Yes ²	-	Yes ²	-	-
Flex Network	-	Yes ³	Yes ³	-	Yes ³	Yes ³	-	Yes ³	-	-

¹Sounds must be converted from .WAV format. Note: AGP3x50 models also include one microphone input.

²Sink or Source, depending on model; refer to individual data sheets. ³F/N AC/DC models vary; refer to individual data sheets.

Drivers

PLC Drivers

Rockwell Automation

DF1
DH-485
Ethernet I/P (Native tag support)

Siemens AG

SIMATIC S7 3964(R)/RK512
SIMATIC S7 MPI Direct
SIMATIC S7 Ethernet

GE Fanuc Automation

Series 90 Ethernet (SRTP)
Series 90-30/70 SNP
Series 90-30/70 SNP-X

Schneider Electric

MODBUS SIO¹ Master
MODBUS TCP Master
Uni-Telway
Modbus Slave (SIO¹ or Ethernet¹)

Sharp Mfg. Corp.

JW Series Computer Link SIO

YOKOGAWA Electric Corp.

Personal Computer Link SIO
Personal Computer Link Ethernet

LS Industrial Systems

Master-K Cnet

TOYODA Machine Works

TOYOPUC CMP-LINK SIO
TOYOPUC CMP-LINK Ethernet

Fuji Electric Corp.

MICREX-F Series SIO

Mitsubishi Electric Corp.

A Series CPU Direct
A Series Ethernet
A Series Computer Link
FX Series CPU Direct
FX Series Computer Link
Q Series CPU Direct
Q/QnA Serial Communication
Q/QnA Series Ethernet
QnA Series CPU Direct
QUTE Series CPU Direct
Modbus TCP Master

YASKAWA Electric Corp.

MEMOBUS SIO
MEMOBUS Ethernet

OMRON Corp.

C/CV Series HOST Link
CS/CJ Series Ethernet
CS/CJ Series HOST Link

Hitachi Industrial Equipment Systems

HIDIC H Series Ethernet
HIDIC H Series

Matsushita Electric Works

FP Series Computer Link SIO

KEYENCE Corp.

KV-700/1000 Series CPU Direct

Saia-Burgess Controls

SAIA S-Bus SIO

Temperature Controllers

Yamatake Corp.

Digital Controller SIO

RKC Instrument

Temp. Controller MODBUS SIO

OMRON Corp.

Temp. Controller CompoWay/F

Fieldbus Module

PROFIBUS International

PROFIBUS DP Slave

Other Connections

Digital Electronics Corp.

Memory Link
General Ethernet (using D-Script)¹

¹Contact your local sales rep for availability.

Barcode, 2D Readers & Printers

	Manufacturer	Model	Type	Comments
Serial	Aimex Corporation	BR-530RS	Pen	Requires BB-60 power supply
	OPT Electronics	OPT-6125-RS	Touch Scanner (read width: 65mm)	Requires DC5300T for power
	Denso Co.	HC-36IITR	Touch Scanner (read width: 61mm)	Requires P-200 for power, also requires KRS-423-XF1K (from Sanwa Supply) connector cable
	HHP	IT3800LR-12	Linear imager	Requires cable 42203758-03 (IT3800LR-12 Reader has been shown to work but is not fully tested)
USB	Aimex Corporation	BR-530UK	Pen	Power supply not required
	OPT Electronics	OPT-6125-USB	Touch Scanner (read width: 65 mm)	Power supply not required
	Denso Co.	HC-36TU-K	Touch Scanner (read width: 61mm)	Power supply not required
	HHP	IT5800	Hand-held Industrial Scanner	5800SR050-0F00 is complete with USB cable
	Symbol	LS3408-FZ	Hand-held Industrial Scanner	Part #LS3408-FZ20005 needs cable CBA-U01-S07ZA
	Epson	Stylus Photo R200	Inkjet printer	Use USB cable FP-US00 or commercial type
	Epson	ECS/P24-J84(C)	Command printer	Use USB conversion cable IEE1284 (commercially available)
	NEC	PC-PR201-PL	Command printer	Use USB conversion cable IEE1284 (commercially available)

AGP3000 Connectivity and Installation Accessories



USB Transfer Cable (1m)
CA3-USBCB-01
Downloads project data created with GP-Pro EX from PC's USB port to AGP's USB port.



USB Cable (5m)
FP-US00
Connects a USB printer (Type B) port to AGP's USB port.



USB Front Cable (1m)
CA5-USBEXT-01
USB extension cable.



RS-232 Cable (5m)
CA3-CBL232/5M-01
Connects Mitsubishi PLC A-Series to the AGP RS-232 COM port.



GP RS-422 Cable (5m)
CA3-CBL422-01
Connects the AGP RS-422 COM port 2 via 9-pin plug to host controller via open wires.



RS-422 Cable (5m)
CA3-CBL422/5M-01
Connects the AGP RS-422 COM port 1 via 9-pin socket to host controller via open wires.



Mitsubishi PLC A-Series Connection Cable (5m)
CA3-CBLA-01
Connects Mitsubishi PLC A-Series and QnA-Series programming console port to AGP.



Mitsubishi PLC Q-Series Cable (5m)
CA3-CBLQ-01
Connects Mitsubishi PLC Q-Series programming console port to AGP. Connection cable.



Mitsubishi PLC Q-Series Cable (5m)
CA3-CBLQNMQ-01
Connects Mitsubishi PLC Q-Series to the AGP RS-232C COM port. Link cable.



Mitsubishi PLC FX-Series Cable
CA3-CBLFX/5M-01 (5m)
CA3-CBLFX/1M-01 (1m)
Connects Mitsubishi PLC FX-Series programming console port to AGP RS-422 COM port.



Omron PLC SYSMAC Link Cable (5m)
CA3-CBLSYS-01
Connects Omron PLC SYSMAC Series unit to AGP RS-232C port.



GP Multi-Link Cable (5m)
CA3-CBLMLT-01
Connects a host controller to the AGP RS-422 port for multi-link (n:1) communication.



GP 2 Port Adapter Cable (5m)
CA3-MDCB11
Connects Mitsubishi PLC to the AGP RS-422 port using 2-port adapter II (GP070-MD11).



9-pin-to-25-pin RS-232C Conversion Cable
CA3-CBLCBT232-01
9-pin D-sub socket to 25-pin RS-232 cable adapter (for use with some HMI-CAB-Cxxx cables).



9-pin-to-25-pin RS-422 Conversion Cable
CA3-CBLCBT422-01
9-pin D-sub socket to 25-pin RS-422 cable adapter (for use with some HMI-CAB-Cxxx cables).



Allen-Bradley SLC 5/03, 5/04 Series Cable
HMI-CAB-ST52
HMI-CAB-ST52-30X
HMI-CAB-ST52-50X
Connects AGP3000/ST401 to A-B PLC via RS-232 9-pin D-sub.



Ethernet Crossover Cable
HMI-CAB-ETH
6-ft. HMI to PLC Ethernet port or to program HMI.



Micrologix PLC Cable
HMI-CAB-ST106
Connects AGP3000/ST401 to PLC RS-232 8-pin DIN port.



PLC Adapter Cable
HMI-CAB-ST001
Connects to AGP3000/ST40x serial port with 9-conductor open-ended wires for connecting to third-party screw terminal devices.



RS-232C Cross-Type Cable (5m)
GP410-IS00-0
25-pin D-sub connector both ends. Requires CA3-CBLCBT232-01.



Serial USB Cable for Modem Download
CA6-USB232-01



1-Amp Power Supply
510-1000-004
2-Amp Power Supply
510-1000-041
24VDC Din-Rail Mount Class 1 Div 2.

RS-485 Isolation Unit
CA3-ISO485-01

RS-232 Isolation Unit
CA3-ISO232-01

Unit for electrically isolating a serial interface signal from the AGP internal current (RS-422 and RS-485 are switchable, or RS-232C and RS-422 are switchable).

 <p>GP-Pro EX Editor Software EX-ED-V11 (Includes one user license.) Movie Converter Software EX-MOVCON-LICENSE Additional User License EX-ED-LICENSE</p>	 <p>Pro-Server EX Data Management Software EX-SDV-V10 (Includes one user license.) Additional User License EX-SED-LICENSE</p>	 <p>Siemens COM Port Conversion Adapter CA3-ADPSEI-01 9-pin D-sub to MPI adapter. Adapts COM port to accept Profibus MPI-style connectors and cables.</p>	 <p>COM Port Conversion Adapter CA3-ADPCOM-01 9-pin D-sub plug to 9-pin D-sub socket adapter for AGP3000 COM port 1. Not intended for AGP3302 model.</p>	 <p>Online Adapter CA4-ADPONL-01 9-pin D-sub plug to 9-pin D-sub socket adapter for AGP3000 COM port 2 only. NOTE: Includes network pull- up/pull-down resistors. Not intended for AGP3302 model.</p>
 <p>AUX Connector CA5-AUXCNALL-01 The AUX connector for AGP3000 series required in case an external output is used.</p>	 <p>Terminal Block Conversion CA3-ADPTRM-01 9-pin male D-sub to screw terminal.</p>	 <p>Mitsubishi PLC A, QnA, FX Series 2-Port Adapter II GP070-MD11 Allows simultaneous use of an AGP3000 Series unit and a Mitsubishi PLC A, QnA, FX series peripheral device.</p>	 <p>DC Power Supply Connector for AGP330x and AGP34x0 models CA5-DCCNM-01</p>	 <p>DC Power Supply Connector for AGP35x0 and AGP36x0 models CA5-DCCNL-01</p>
 <p>Installation Fastener CA3-ATFALL-01 Used to install the AGP3000 Series into a solid panel (included with unit).</p>	 <p>USB Cable Clamp (2-port) CA5-USBATL-01 USB cable clamp for 2-port HMI units to prevent disconnection.</p>	 <p>USB Cable Clamp (1 port) CA5-USBATM-01 USB cable clamp for 1-port HMI units to prevent disconnection.</p>	 <p>Panel Cutout Adapter for AGP3500 Series CA4-ATM10-01 Panel cutout adapter for mounting in cutout of GP2500 (TFT).</p>	 <p>Panel Cutout Adapter for AGP3300 Series CA4-ATM5-01 Panel cutout adapter for mounting in cutout of GP37W2B.</p>
 <p>PROFIBUS Slave Unit CA5-PFSALL/EX-01 PROFIBUS slave communication module for connecting AGP to PROFIBUS DP network.</p>	 <p>CF Card Adapter GP077-CFAD10 Used for read/write of CF card data via a PC's PCMCIA slot.</p>	 <p>CompactFlash card inserts into the unit's CF card slot.</p> <p>128MB CA3-CFCALL/128MB-01</p> <p>256MB CA3-CFCALL/256MB-01</p> <p>512MB CA3-CFCALL/512MB-01</p>	<p>AGP3500T/AGP3550T Backlight Replacement CA5-BLU10T-01</p> <p>AGP3750T Backlight Replacement CA3-BLU15-01</p> <p>AGP3600T/AGP3650T Backlight Replacement CA3-BLU12-01</p> <p>AGP3500S/GP2501S Backlight Replacement PS501S-BU00</p> <p><i>Note: AGP3300, AGP3400 and AGP3500L backlights cannot be replaced in the field.</i></p>	 <p>Protection Sheets Disposable, dirt-resistant cover for screen (5 sheets/set)</p> <p>15" for AGP3750 series CA3-DFS15-01</p> <p>12" for AGP3600 series CA3-DFS12-01</p> <p>10" for AGP3500 series CA5-DFS10-01</p> <p>8" for AGP3400 series PS400-DF00</p> <p>6" for AGP3300 series CA3-DFS6-01</p>

I/O Expansion Options

Expand the reach of your HMI operator interface

Need some extra I/O? Now there's no need to buy an extra controller when you just need a few more I/O points. The AGP3000 Series of HMI operator interfaces includes models that feature built-in discrete I/O. Or, expand to a distributed I/O network by choosing a model with the optional flex network interface. The choice is yours. Either way, you'll save money with these cost-effective options.

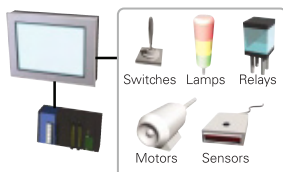
HMI Control With Integrated I/O

AGP3000 "DK81C/DK81K" Units

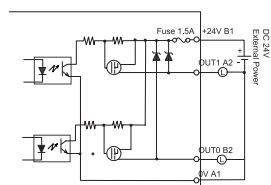
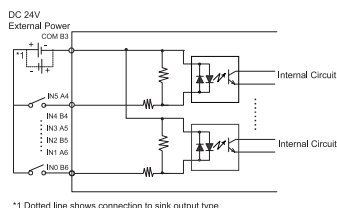
Built-in discrete I/O for when you need a few extra I/O points.

DIO type for direct connection to components

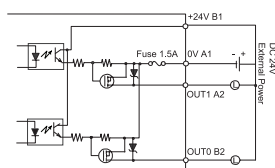
- III DIO (sink) type: 6 inputs/2 outputs
- III DIO (source) type: 6 inputs/2 outputs



A wide range of components can be used for ON/OFF control.



Source Outputs "DK81C"



Sink Outputs "DK81K"

Built-in 6 discrete inputs, 2 outputs

HMI Control for Distributed I/O

AGP3000 "FN1M" Units

Flex network interface for distributed I/O applications.

Flex network type featuring I/O expansion

- III Maximum number of expandable I/Os:
 - 512-bit I/Os (256 inputs and 256 outputs)
 - 128 integral I/Os (64 inputs and 64 outputs)



Mix and match any flex network I/O modules to fit your application needs

Discrete I/O modules

FN-X16TS41	16-pt discrete input
FN-X32TS41	32-pt discrete input
FN-Y08RL41	8-relay discrete output
FN-Y16SK41	16-pt discrete sink output
FN-Y16SC41	16-pt discrete source output



FN-X16TS41



FN-X32TS41



FN-Y08RL41



FN-Y16SK41



FN-Y16SC41

Discrete high-density I/O modules

FN-XY08TS41	8-pt discrete input, 8-pt sink output
FN-XY16SK41	16-pt discrete input, 16-pt sink output
FN-XY16SC41	16-pt discrete input, 16-pt source output
FN-XY32SKS41	32-pt discrete input, 32-pt sink output



FN-XY08TS41



FN-XY16SK41



FN-XY16SC41



FN-XY32SKS41

Analog I/O modules

FN-AD02AH41	Input 2-Ch: 0-10VDC 0-20ma, 4-20ma
FN-AD04AH11	Input 4-Ch: 0-10VDC, +/-10VDC, 0-20ma, 4-20ma
FN-DA02AH41	Output 2-Ch: 0-10VDC 0-20ma, 4-20ma
FN-DA04AH11	Output 4-Ch: 0-10VDC, +/-10VDC, 0-20ma, 4-20ma



FN-AD02AH41



FN-DA02AH41

With the AGP3000 family, you can create a complete HMI monitoring and control system in the same software development environment!

Our Commitment to You



A global company
with a local presence

Reliable operations worldwide

Pro-face products are known worldwide for their reliability, and they are just as reliable in your facility as they are everywhere else in the world. Our extensive certifications and global support network provide you complete peace of mind. Whether you're looking for HMI products for your own facility or for facilities around the world, Pro-face is there to serve you.



Restriction of Hazardous
Substances (RoHS) is a directive
of the European Union (EU).

ISO 9001:2000
Quality System Certified

ISO 14000
Quality System Certified

Committed to bringing you the best HMI products

No other HMI company will offer you more options, higher reliability or better investment protection than Pro-face. Pro-face strives to continually provide you with HMI products that have features you won't find anywhere else, like ultra-fast 64-bit RISC processors for unmatched HMI performance, the ultimate in multimedia and connectivity capabilities, plus integrated data management solutions and other features proven to boost your productivity and reduce your costs.

**The best HMI protection
money can buy.**

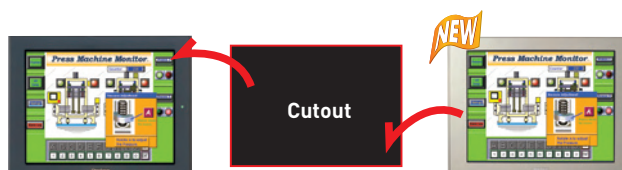
Protecting your investment



If you're already a Pro-face customer, then you realize the investment protection we've built into our operator interfaces. No other operator interface company can offer you:

- 16 years of cutout compatibility
- Built-in HMI application software migration tools
- Continuous software and hardware enhancements
- Local field application engineers ready to assist you
- A two-year warranty
- In-stock, next-day shipments

Drag out the old...drop in the new



Older GP2000,
GP77R, GP70,
GP*50, GP*30, and
GP*10 Series

AGP3000 Series

Panel cutout dimensions

Size (mm)	191.5x141.5	156x123.5	204.5x159.5	259x201	301.5x227.5	383.5x282.5
Series name	GP77R Series	GP37W2B GP377R Series	—	GP-477RE	GP577R Series	—
GP2000 Series	—	GP230* Series	GP240* Series	—	GP260* GP250* Series	—
GP3000 Series	GP-3300 Series		GP-3400 Series	GP-3500 Series(TFT)	GP-3600 GP-3500(STN) Series	GP-3700 Series

Note: In some instances, an available adapter plate may be required.



Xycom Automation LLC
750 North Maple Road
Saline, MI 48176 USA
Tel: 734-429-4971 or
Toll Free: 800-AT-XYCOM
Fax: 734-429-1010
<http://www.xycom.com>
Email: sales@xycom.com

Customer Care Center:
Tel: 734-944-0482
Web Support: <http://support.xycom.com>
Email: customercare@xycom.com



WORLDWIDE SUPPORT

Global Head Office

Digital Electronics Corporation
Osaka JAPAN
Tel: +81 (0)6 6613 3116
Fax: +81 (0)6 6613 5888
<http://www.pro-face.com>
info@pro-face.com

China

Pro-face China International Trading
(Shanghai) Co., Ltd.
Shanghai P. R. CHINA
Tel: +86 (0)21 6361 5175
Fax: +86 (0)21 6361 5176
<http://www.proface.com.cn>
proface@proface.com.cn

South-East Asia Pacific

Pro-face South-East Asia Pacific
Co., Ltd.
Bangkok THAILAND
Tel: +66 (0)2 260 8282
Fax: +66 (0)2 260 8283
<http://www.proface.co.th>
support@proface.co.th

South Korea

Pro-face Korea Co., Ltd.
Seoul SOUTH KOREA
Tel: +82 (0)2 2630 9850
Fax: +82 (0)2 2630 9860
<http://www.proface.co.kr>
proface@proface.co.kr

Taiwan

Pro-face Taiwan Co., Ltd.
Taipei TAIWAN
Tel: +886 (0)2 2657 1121
Fax: +886 (0)2 2657 1021
<http://www.proface.com.tw>
proface@proface.com.tw

Australia and New Zealand

Pro-face Australia Pty Ltd.
Melbourne AUSTRALIA
Tel: +61 (0)3 9550 7395
Fax: +61 (0)3 9550 7390
<http://www.pro-face.com.au>
<http://www.pro-face.co.nz>
pfau@pro-face.com

North/South American Head Office

Pro-face America / Xycom
Saline, MI U.S.A.
Tel: +1 734 429 4971
Fax: +1 734 429 1010
<http://www.profaceamerica.com>
sales.info@profaceamerica.com

European Head Office

Pro-face Europe B.V.
Hoofddorp THE NETHERLANDS
Tel: +31 (0)23 55 44 099
Fax: +31 (0)23 55 44 090
<http://www.proface.com>
info@proface.com

France

Pro-face France S.A.S.
Mitry-Mory FRANCE
Tel: +33 (0)1 60 21 22 91
Fax: +33 (0)1 60 21 22 92
<http://www.proface.fr>
info@proface.fr

Germany

Pro-face Deutschland GmbH
Solingen GERMANY
Tel: +49 (0)212 258 260
Fax: +49 (0)212 258 2640
<http://www.pro-face.de>
sales@pro-face.de

Italy

Pro-face Italia S.p.a.
Bovisio Masciago (Milano) ITALY
Tel: +39 0362 59 96 1
Fax: +39 0362 59 96 69
<http://www.proface.it>
info@proface.it

Poland

Pro-face Europe B.V.
(Warsaw Office)
Warsaw POLAND
Tel/Fax: +48 22 850 9154
<http://www.proface.pl>

Scandinavia

Pro-face Scandinavia ApS
Glostrup (Copenhagen) DENMARK
Tel: +45 70 22 01 22
Fax: +45 70 22 01 33
<http://www.pro-face-eu.net>
info@pro-face.dk

Spain and Portugal

Pro-face España
Cardedeu (Barcelona) SPAIN
Tel: +34 (0)93 846 07 45
Fax: +34 (0)93 845 48 68
<http://www.pro-face.es>
central@pro-face.es

Sweden

Pro-face Sweden AB
Loddekoping (Malmo) SWEDEN
Tel: +46 46 540 90 70
Fax: +46 46 71 27 90
<http://www.pro-face-eu.net>
info@pro-face.se

Switzerland

Pro-face Deutschland GmbH
Regensdorf SWITZERLAND
Tel: +41 (0)43 343 7272
Fax: +41 (0)43 343 7279
<http://www.pro-face.ch>
info@pro-face.ch

United Kingdom

Pro-face UK Ltd
Coventry ENGLAND
Tel: +44 (0)2476 440088
Fax: +44 (0)2476 440099
<http://www.profaceuk.com>
info@profaceuk.com

Pro-face®
XYCOM™

BR-GP3-001(B)

2006 Xycom Automation LLC. All rights reserved. All trademarks are the property of their respective owners.
Data subject to change without notice. Consult Xycom Automation data sheets for current product information.



ST400-AG41-24V (RS-422/485)
ST401-AG41-24V (RS-232)



ST400 & ST401 24VDC, RS-232 or RS-422/485 Serial

3.8" Amber Low Cost Graphic Touch Screen

- Fast and Powerful 100Mhz RISC Processor.
- Six function buttons configurable per screen.
- Industry's best protocol support.
- Bar Code support for parts tracking and inventory control.
- Extensive Multi-language character support.
- Zero maintenance amber LED backlight applications needing high contrast and visibility.
- UL Listed, Class 1, Division 2 hazardous location certifications.

FEATURES

- 3.8 Inch Touch Screen
- LED Backlit Amber LCD
- 320 x 240 QVGA Resolution
- Supports Wide Variety of Serial Protocols
- RS-422/485 Com Port (ST400)
- RS-232 Com Port (ST401)
- Six Function Keys
- 24V DC Power
- Multi-language

INFORMATION



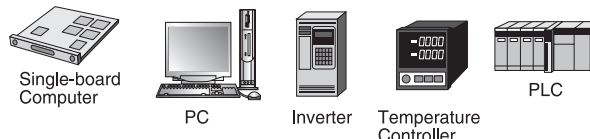
Powered by:
GP-PRO/PB III C
Package03 HMI Screen
Editor Development
Software

- Advanced featured graphics editor for drawing objects, animation, creating pre-configured operator objects, etc.
- Recipes Trending, Alarm/Event Management, Scheduling, Pop-up keypads, etc.
- Password protected; 15 level security.
- Time scheduling for equipment start uptime and periodic tasks.
- Script functions to interface to custom OEM equipment.

COMMUNICATION

Versatile interfaces support flexible and expanding control system needs:

- **Connect to various controllers via RS-232, RS-422, or RS-485 serial port.**



- **Also supports serial devices; such as single or two-dimensional bar code readers.**



CONNECTIVITY

Pin Connection	Pin No.	Signal	Signal Name	Direction
ST400 RS-422 Serial Interface 	1	RDA	Receive data A	Input
	2	RDB	Receive data B	Input
	3	SDA	Send data A	Output
	4	ERA	Enable receive A	Output
	5	SG	Ground	-
	6	CSB	Clear send B	Input
	7	SDB	Send data B	Output
	8	CSA	Clear send A	Input
	9	ERB	Enable receive B	Output
Pin Connection	Pin No.	Signal	Signal Name	Direction
ST401 RS-232 Serial Interface 	1	CD	Carrier detect	Input
	2	RD	Receive data	Input
	3	SD	Send data	Output
	4	ER	Enable receive	Output
	5	SG	Ground	-
	6	DR	Data set ready	Input
	7	RS	Request send	Output
	8	CS	Clear send	Input
	9	RI	Ring indicate	Input



Partial List of Controllers Supported:

GE Fanuc
Schneider
Fuji Electric
Modicon
Mitsubishi
Yokogawa

Koyo
Omron
Rockwell
Siemens
Matsushita
Toyota ... and MORE

ST400 & ST401 SPECIFICATIONS

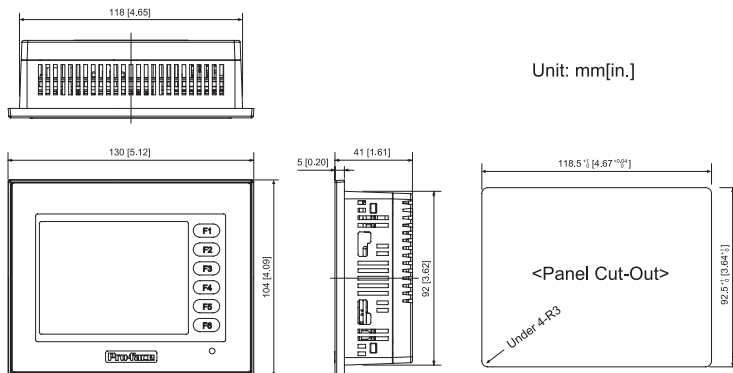
FUNCTIONAL SPECIFICATIONS

Display Type	Amber Monochrome LCD
Display Colors	Monochrome; up to 8 levels of gray
Backlight	LED backlight maintenance free
Display Resolution	320 x 240 pixels
Effective Display Area (mm)	W76.7mm [3.02in.] x H57.5mm [2.26in.]
Brightness Control	2 levels of adjustment available via touch panel
Contrast Control	8 levels of adjustment available via touch panel
Character Sizes	8x8, 8x16, 16x16, 32x32 dot fonts
Font Sizes	Width can be expanded 1 to 8 times. Height can be expanded 1/2 and 1 to 8 times
Memory - Application	640KB FLASH EPROM
Memory - Data Backup	96KB SRAM - uses a lithium battery
Serial (COM 1) Interface	(ST400) RS-422 / RS-485, 9-pin D-sub, Data Transmission Speed: 2400 to 115.2 kbps (ST401) RS-232, 9-pin D-sub, Data Transmission Speed: 2400 to 115.2 kbps
Tool Connector Port	8-pin mini Din, Asynchronous TTL Level non-procedural command interface for program download, barcode reader interface

GENERAL SPECIFICATIONS

Electrical	Input Voltage	24VDC
	Rated Voltage Range	19.2VDC to 28.8VDC
	Power Consumption	7W or less
Environmental	Ambient Operating Temp.	0°C to 50°C (Cabinet interior and panel face)
	Storage Temperature	-20°C to 60°C
	Operating Humidity	10%RH to 90%RH (non-condensing, drybulb temperature: 39°C or less)
	Storage Humidity	10%RH to 90%RH (non-condensing, drybulb temperature: 39°C or less)
Structural	Vibration Resistance	IEC61131-2 (JIS B 3501) compliant. When vibration is NOT continuous: 10Hz to 57Hz 0.075mm, 57Hz to 150Hz 9.8m/s ² . When vibration is continuous: 10Hz to 57Hz 0.035mm, 57Hz to 150Hz 4.9m/s ² X,Y, Z direction for 10 times 80 min.)
	Ratings	NEMA TYPE#250 Type 4 x/12 Equivalent to IP65 (Indoor use only)
	Certifications	UL/cUL Listed, UL508, UL1604 CL 1 Div 2, CE EN55011, EN61000-6-2
	External Dimensions	W130mm[5.12in.] x H104mm [4.09in.] x D41mm [1.61in.]
	Weight	0.4kg (1.1lb) or less

EXTERNAL DIMENSIONS



SOFTWARE COMPATIBILITY



Powered by:
GP-PRO/PB III C Package03
HMI Screen Editor Development
Software

ORDERING INFORMATION

ORDER NUMBER

ST400-AG41-24V

ST401-AG41-24V

OPTIONAL ACCESSORIES

GPW-CB02

GPW-CB03

HMI-CAB-ST001

ST400-DF01

PLC Cable

DESCRIPTION

3.8" Amber, 640KB Mem., 1 RS-422/485 Serial Port, 24VDC, UL, CE

3.8" Amber, 640KB Mem., 1 RS-232 Serial Port, 24VDC, UL, CE

Programming Cable, PC RS-232, 9 pin D-Sub application download cable

Programming Cable, PC USB, application download cable

Generic serial communication cable, ST40x to open end wires, 3 meters

Overlay Screen Protection Sheet (qty 5)

Wide variety of PLC cables available

Xycom Automation, Inc.
a Pro-face America Company

734-429-4971

Fax: 734-429-1010

http://www.xycom.com

Customer Support Hotline:
734-944-0482



© 2005 Xycom Automation, Inc. Is a wholly owned subsidiary of Pro-face America, Inc. Specifications may change without notice.
Xycom Automation is a trademark of Xycom Automation. Other brand or product names are the property of their respective owners.

PRO-FACE OPERATOR INTERFACES

product datasheet



ST401-AG41-12V-XY1



ST401 12VDC, RS-232 Serial

3.8" Amber Low Cost Graphic Touch Screen

- Fast and Powerful 100Mhz RISC Processor
- Six function buttons configurable per screen
- HMI designed for solar-powered remote flow monitoring applications
- 12V DC is ideal for in-vehicle heavy machinery display systems
- Bar code reader support for parts tracking and inventory control
- Extensive Multi-language character support
- Zero maintenance amber LED backlight ideal for applications needing high contrast and visibility
- UL Listed, Class 1, Division 2 Hazardous Location Certifications

FEATURES

- 3.8 Inch Touch Screen
- LED Backlit Amber LCD
- 320 x 240 QVGA Resolution
- Graphic Image Import
- Java-Based Scripting Support
- RS-232 Serial Com Port
- NEMA 4x/12
- 12V DC Power
- Multi-language

INFORMATION



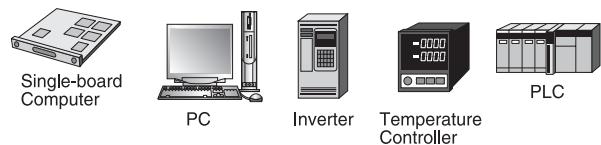
Powered by
**Pro-Designer V4.2.10 HMI
Development software**

- Easy-to-use multi-platform graphics editor for drawing objects, animation, creating pre-configured operator objects, etc.
- Recipes Trending, Alarm/Event Management, Security, Scheduling, Pop-up keypads, etc.
- Animation and Java-based scripting
- Graphic file import: BMP, JPG, EMF, PNG

COMMUNICATION

Versatile interfaces support flexible and expanding control system needs:

- **Connect to various controllers via RS-232**



- **Also supports serial devices such as single or two-dimensional bar code readers**



CONNECTIVITY

RS-232C Serial Interface

Pin Connection	Pin No.	Signal	Signal Name	Direction
	1	NC	No connection	-
	2	NC	No connection	-
	3	LINE(+)	Line (+)	In/Output
	4	RTS	Request Send	Output
	5	SG	Ground	-
	6	5V	5V External Output ^{*2}	Output
	7	NC	No connection	-
	8	LINE(-)	Line (-)	In/Output
	9	NC	No connection	-

*1 The connector of the ST side is socket type.

*2 When providing power via the Siemens Corporation Profibus connector, power cannot be connected to the Device/PLC.



Partial List of Controllers Supported:

GE Fanuc	Mitsubishi	Rockwell
Schneider	Yokogawa	Siemens
Fuji Electric	Koyo	Matsushita
Modicon	Omron	Toyoda

... and MORE

ST401 12V SPECIFICATIONS

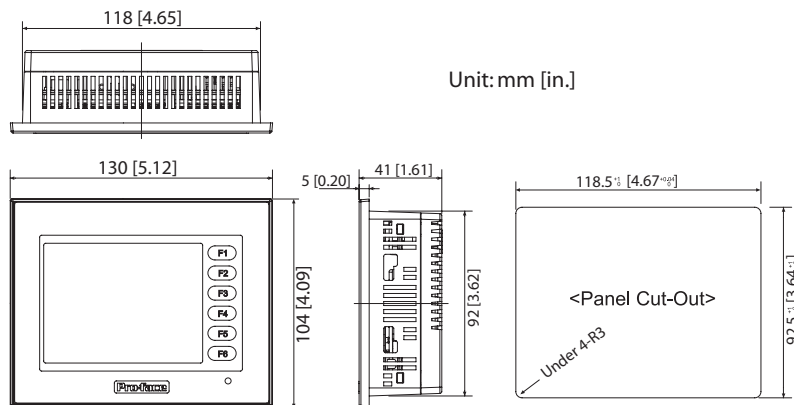
FUNCTIONAL SPECIFICATIONS

Display Type	Amber Monochrome LCD
Display Colors	Monochrome; up to 8 levels of gray
Backlight	LED backlight maintenance free
Display Resolution	320 x 240 pixels
Effective Display Area (mm)	W76.7mm [3.02in.] x H57.5mm [2.26in.]
Brightness Control	2 levels of adjustment available via touch panel
Contrast Control	8 levels of adjustment available via touch panel
Character Sizes	8x8, 8x16, 16x16, 32x32 dot fonts
Font Sizes	Width can be expanded 1 to 8 times. Height can be expanded 1/2 and 1 to 8 times
Memory - Application	8 MB FLASH EPROM
Memory - Data Backup	16MB SRAM - uses a lithium battery
Serial (COM 1) Interface	RS-232C, 9-pin D-sub, Data Transmission Speed: 2400 to 115.2 kbps
Tool Connector Port	8-pin mini Din, Asynchronous TTL Level non-procedural command interface for program download, barcode reader interface

GENERAL SPECIFICATIONS

Electrical	Input Voltage	12VDC
	Rated Voltage Range	9.6VDC to 14.4VDC
	Power Consumption	7W or less
Environmental	Ambient Operating Temp.	0°C to 50°C (Cabinet interior and panel face)
	Storage Temperature	-20°C to 60°C
	Operating Humidity	10%RH to 90%RH (non-condensing, drybulb temperature: 39°C or less)
	Storage Humidity	10%RH to 90%RH (non-condensing, drybulb temperature: 39°C or less)
Structural	Vibration Resistance	IEC61131-2 (JIS B 3501) compliant. When vibration is NOT continuous: 10Hz to 57Hz 0.075mm, 57Hz to 150Hz 9.8m/s ² . When vibration is continuous: 10Hz to 57Hz 0.035mm, 57Hz to 150Hz 4.9m/s ² X,Y, Z direction for 10 times 80 min.)
	Ratings	NEMA TYPE#250 Type 4 x/12 Equivalent to IP65
	Certifications	UL/cUL Listed, UL508, UL1604 CL 1 Div 2, CE EN55011, EN61000-6-2
	External Dimensions	W130mm[5.12in.] x H104mm [4.09in.] x D41mm [1.61in.]
	Weight	0.4kg (0.88lb) or less

EXTERNAL DIMENSIONS



SOFTWARE COMPATIBILITY



Powered by
Pro-Designer V4.2.10 HMI
Development software

ORDERING INFORMATION

ORDER NUMBER

ST401-AG41-12V-XY1

OPTIONAL ACCESSORIES

GPW-CB02

GPW-CB03

CA3-CBL232/5M-01

HMI-CAB-ST001

ST400-DF01

PLC Cables

DESCRIPTION

3.8" Amber, Pro-Designer Only, 1 RS-232 Port, 12VDC

Programming Cable, PC RS-232, 9 pin D-Sub application download cable

Programming Cable, PC USB, application download cable

RS-232C cable, 5 meter length, connect ST401 unit to PLC via 25 pin, D-sub plug

Generic serial communication cable, ST40x to open end wires, 3 meters

Overlay Screen Protection Sheet (qty 5)

Wide variety of PLC cables available

Xycom Automation, Inc.
a Pro-face America Company

734-429-4971

Fax: 734-429-1010

<http://www.xycom.com>

Customer Support Hotline:
734-944-0482



© 2006 Xycom Automation, LLC. Is a wholly owned subsidiary of Pro-face America, Inc. Specifications may change without notice.
Xycom Automation is a trademark of Xycom Automation. Other brand or product names are the property of their respective owners.



ST402-AG41-24V



ST402 - 24VDC, Siemens MPI 485

3.8" Amber Low Cost Graphic Touch Screen

- Fast and Powerful 100Mhz RISC Processor
- Six function buttons configurable per screen
- Direct support for Siemens MPI 485 communications
- UL CL1, Div 2 certifications
- Bar code reader support for security systems and inventory control
- Extensive Multi-language character support
- Zero maintenance LED backlight ideal for applications needing high contrast and visibility

FEATURES

- 3.8 Inch Touch Screen
- LED Backlit Amber LCD
- 320 x 240 QVGA Resolution
- 15-Level Password Security
- Siemens MPI 485 Com Port
- Secondary RS-422 (Limited) Serial Port
- Six Function Keys
- 24V DC Power
- Multi-language

INFORMATION



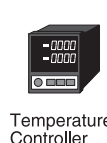
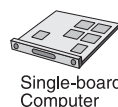
**Powered by:
GP-PRO/PB III C
Package03 HMI Screen
Editor Development
Software**

- Advanced featured graphics editor for drawing objects, animation, creating pre-configured operator objects, etc.
- Recipes Trending, Alarm/Event Management, Scheduling, Pop-up keypads, etc.
- Password protected; 15 level security.
- Time scheduling for equipment start uptime and periodic tasks.
- Script functions to interface to custom OEM equipment.

COMMUNICATION

Versatile interfaces support flexible and expanding control system needs:

■ Connect via Siemens MPI 485 Interface



■ Supports serial devices such as single or two-dimensional bar code readers



CONNECTIVITY



**Siemens MPI RS-485
Serial Interface**

Pin Connection	Pin No.	Signal	Signal Name	Direction
	1	NC	No connection	-
	2	NC	No connection	-
	3	LINE(+)	Line (+)	In/Output
	4	RTS	Request Send	Output
	5	SG	Ground	-
	6	5V	5V External Output ^{*1}	Output
	7	NC	No connection	-
	8	LINE(-)	Line (-)	In/Output
	9	NC	No connection	-

*1 The connector of the ST side is socket type.

**Port 2 RS-422 Serial Expansion Interface
for scripting and bar code readers *1**

Pin Connection	Pin No.	Signal	Signal Name	Direction
	1	RDA	Receive data A	Input
	2	RDB	Receive data B	Input
	3	SDA	Send data A	Output
	4	ERA	Enable receive A	Output
	5	SG	Ground	-
	6	CSB	Clear send B	Input
	7	SDB	Send data B	Output
	8	CSA	Clear send A	Input
	9	ERB	Enable receive B	Output

*1 The connector of the ST side is pin type.

Note: Standard serial protocol drivers are not supported with this port. Use ST400 model for RS-422 / RS-485 applications.

ST402 SPECIFICATIONS

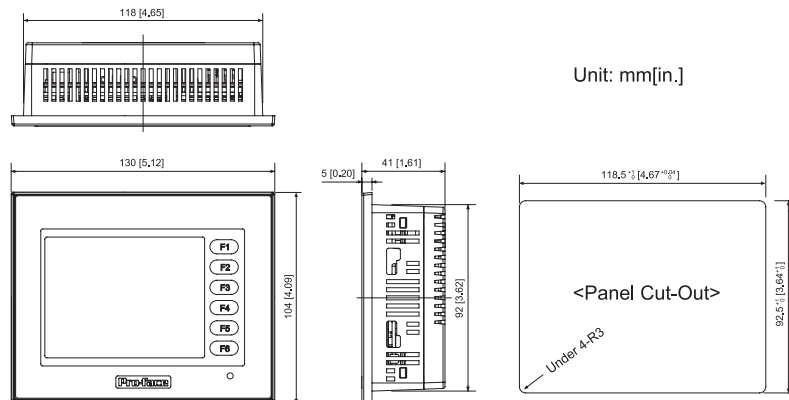
FUNCTIONAL SPECIFICATIONS

Display Type	Amber Monochrome LCD
Display Colors	Monochrome; up to 8 levels of gray
Backlight	LED backlight; maintenance free
Display Resolution	320 x 240 pixels
Effective Display Area (mm)	W76.7mm [3.02in.] x H57.5mm [2.26in.]
Brightness Control	2 levels of adjustment available via touch panel
Contrast Control	8 levels of adjustment available via touch panel
Character Sizes	8x8, 8x16, 16x16, 32x32 dot fonts
Font Sizes	Width can be expanded 1 to 8 times. Height can be expanded 1/2 and 1 to 8 times
Memory - Application	640 KB FLASH EPROM
Memory - Data Backup	96 KB SRAM - uses a lithium battery
Serial Interface	Siemens MPI RS-485, 9-pin D-sub, Data Transmission Speed: 2400 to 187.5 kbps
Expansion Serial Interface	RS-422, Data Transmission Speed: 2400 to 38.4 bps for scripting and bar code readers
Tool Connector Port	8-pin Din, Asynchronous TTL Level non-procedural command interface for program download, bar code reader interface

GENERAL SPECIFICATIONS

Electrical	Input Voltage	24VDC
	Rated Voltage Range	19.2VDC to 28.8VDC
	Power Consumption	7W or less
Environmental	Ambient Operating Temp.	0°C to 50°C (Cabinet interior and panel face)
	Storage Temperature	-20°C to 60°C
	Operating Humidity	10%RH to 90%RH (non-condensing, wetbulb temperature: 39°C or less)
	Storage Humidity	10%RH to 90%RH (non-condensing, wetbulb temperature: 39°C or less)
Structural	Vibration Resistance	IEC61131-2 (JIS B 3501) compliant. When vibration is NOT continuous: 10Hz to 57Hz 0.075mm, 57Hz to 150Hz 9.8m/s ² . When vibration is continuous: 10Hz to 57Hz 0.035mm, 57Hz to 150Hz 4.9m/s ² X,Y, Z direction for 10 times (80min.)
	Ratings	NEMA TYPE#250 Type 4 x/12 Equivalent to IP65
	Certifications	UL/cUL Listed, UL508, UL1604 CL 1 Div 2, CE EN55011, EN61000-6-2
	External Dimensions	W130mm[5.12in.] x H104mm [4.09in.] x D41mm [1.61in.]
	Weight	0.4kg (1.1lb) or less

EXTERNAL DIMENSIONS



SOFTWARE COMPATIBILITY



GP-PRO C-Package 03 HMI Development software

ORDERING INFORMATION

ORDER NUMBER

ST402-AG41-24V

DESCRIPTION

3.8" Amber, 640KB Mem., 1 Siemens MPI 485 Port, RS-422 port, 24V, UL, CE

OPTIONAL ACCESSORIES

GPW-CB02

Programming Cable, PC RS-232, 9 pin D-Sub application download cable

GPW-CB03

Programming Cable, PC USB, application download cable

HMI-CAB-ST001

Generic serial communication cable, ST40x to open end wires, 3 meters

ST400-DF01

Overlay Screen Protection Sheet (qty 5)

CA3-CBL422/5M-01

RS-422 cable, 5M, connects ST400/402, other end is 6 wire spade lug

Xycom Automation, Inc.
a Pro-face America Company

734-429-4971

Fax: 734-429-1010

http://www.xycom.com

Customer Support Hotline:
734-944-0482



© 2005 Xycom Automation, Inc. Is a wholly owned subsidiary of Pro-face America, Inc. Specifications may change without notice.
Xycom Automation is a trademark of Xycom Automation. Other brand or product names are the property of their respective owners.



Switch
between two
colors!

ST403-AG41-24V



ST403 - Ethernet & RS-232/RS-422

3.8" Amber/Red Low Cost Graphic Touch Screen

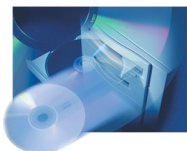
- Fast and Powerful 100Mhz RISC Processor
- Six function buttons configurable per screen
- Both Ethernet and RS-232/RS-422 communications
- Simultaneous multi-protocol support using Pro-Designer software
- Bar code reader support for security systems and inventory control
- Extensive Multi-language character support
- UL Listed, Class 1, Division 2 hazardous location certifications
- Data sharing connectivity to Microsoft programs using Pro-Server software

FEATURES

- 3.8 Inch Touch Screen
- LED Backlit Amber/Red LCD
- 320 x 240 QVGA Resolution
- Ethernet Port (10baseT)
- Data Sharing via Pro-Server
- RS-232/RS-422 Com Port Configurable
- Six Function Keys
- 24V DC Power
- Multi-language

INFORMATION

Various HMI software solutions available to match your needs:

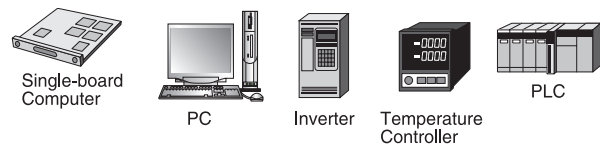


- Advanced featured Graphics Editor for drawing objects, animation, creating pre-configured operator objects, scripting, etc.
- Recipes Trending, Data Logging, Alarm/Event Management, Security, etc.
- Software application connectivity via OPC, DDE, SQL, DLL, SMTP Email
- Graphic file import: BMP, JPG, EMF, PNG
- Optional Web-enabled browser features

COMMUNICATION

Versatile interfaces support flexible and expanding control system needs:

■ **Connect to various controllers via Ethernet or serial interfaces**



■ **Supports serial devices such as single or two-dimensional bar code readers**



CONNECTIVITY



RS-232 / RS-422 Serial Interface

Pin Connection	Pin No.	Signal	Signal Name	Direction
	1	CD/RDA	Carrier detect /Receive data A	Input /Input
	2	RD/RDB	Receive data /Receive data B	Input /Input
	3	SD/SDA	Send data/Send data A	Output /Output
	4	ER/ERA	Enable receive /Enable receive A	Output /Output
	5	SG/SG	Ground/Ground	-
	6	DR/CSB	Data set ready/Clear send B	Input /Input
	7	RS/SDB	Request send /Send data B	Output /Output
	8	CS/CSA	Clear send/Clear send A	Input /Input
	9	RI/ERB	Ring indicate /Enable receive B	Input /Output

Partial List of Controllers Supported:

GE Fanuc

Series 90-30
Series 90-70
PowerMate (Motion Controller)
Fanuc Series 16, 18, 16i, 18i, 21i

Schneider

Twido
Quantum
Momentum
Micro & Nano

Mitsubishi

MELSEC-A
MELSEC-FX
MELSEC-Q
MELSEC-QNA

Rockwell

SLC500
MicroLogix
ControlLogix
CompactLogix

Koyo

DL205, 305, 405

Siemens

Simatic-S5
Simatic-S7-200, 300, 400

IDEC

Micro &
MicroSmart

Yokogawa

Matsushita

Fuji Electric

AND MORE...

ST403 SPECIFICATIONS

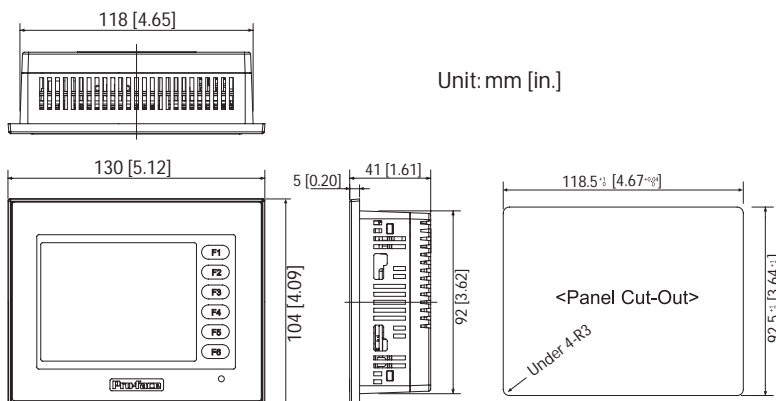
FUNCTIONAL SPECIFICATIONS

Display Type	Monochrome LCD
Display Colors	Monochrome up to 8 levels of gray
Backlight	LED backlight (Amber or Red color) maintenance free
Display Resolution	320 x 240 pixels
Effective Display Area (mm)	W76.7mm [3.02in.] x H57.5mm [2.26in.]
Brightness Control	2 levels of adjustment available via touch panel
Contrast Control	8 levels of adjustment available via touch panel
Character Sizes	8x8, 8x16, 16x16, 32x32 dot fonts
Font Sizes	Width can be expanded 1 to 8 times. Height can be expanded 1/2 and 1 to 8 times
Memory - Application	640 KB FLASH EPROM
Memory - Data Backup	96 KB SRAM - uses a lithium battery
Serial (COM 1) Interface	RS-232C/RS-422 configurable, 9-pin D-sub, Data Transmission Speed: 2400 to 115.2 kbps
Ethernet Interface	IEEE802.3, 10BASE-T
Tool Connector Port	8-pin Din, Asynchronous TTL Level non-procedural command interface for program download, bar code reader interface

GENERAL SPECIFICATIONS

Electrical	Input Voltage	24V DC
	Rated Voltage Range	19.2VDC to 28.8VDC
	Power Consumption	7W or less
Environmental	Ambient Operating Temp.	0°C to 50°C (Cabinet interior and panel face)
	Storage Temperature	-20°C to 60°C
	Operating Humidity	10%RH to 90%RH (non-condensing, drybulb temperature: 39°C or less)
	Storage Humidity	10%RH to 90%RH (non-condensing, drybulb temperature: 39°C or less)
	Vibration Resistance	IEC61131-2 (JIS B 3501) compliant. When vibration is NOT continuous: 10Hz to 57Hz 0.075mm, 57Hz to 150Hz 9.8m/s ² . When vibration is continuous: 10Hz to 57Hz 0.035mm, 57Hz to 150Hz 4.9m/s ² X,Y, Z direction for 10 times (80min.)
Structural	Ratings	NEMA TYPE#250 Type 4 x/12 Equivalent to IP65 (Indoor use only)
	Certifications	UL/cUL Listed, UL508, UL1604 CL 1 Div 2, CE EN55011, EN61000-6-2
	External Dimensions	W130mm[5.12in.] x H104mm [4.09in.] x D41mm [1.61in.]
	Weight	0.4kg (0.88lb) or less

EXTERNAL DIMENSIONS



SOFTWARE COMPATIBILITY



Pro-Designer V4.2.10 HMI Development software



GP-PRO C-Package 03 HMI Development software



Pro-Server V4.5 or better Data Collection software

ORDERING INFORMATION

ORDER NUMBER

ST403-AG41-24V

OPTIONAL ACCESSORIES

GPW-CB02

GPW-CB03

HMI-CAB-ETH

HMI-CAB-ST001

ST400-DF01

PLC Cables

DESCRIPTION

3.8" Dual Color Amber/Red LED, Ethernet and RS-232/RS-422 Port, 24V, UL, CE

Programming Cable, PC RS-232, 9 pin D-Sub application download cable

Programming Cable, PC USB, application download cable

Ethernet crossover cable, 6 ft. length

Generic serial communication cable, ST40x to open end wires, 3 meters

Overlay Screen Protection Sheet (qty 5)

Wide variety of PLC cables available

Xycom Automation

734-429-4971

Fax: 734-429-1010

http://www.xycom.com

Customer Support Hotline:

734-944-0482

XYCOM™
Pro-face®

© 2005 Xycom Automation. Specifications may change without notice.

Xycom Automation is a trademark of Xycom Automation. Other brand or product names are the property of their respective owners.

PRO-FACE OPERATOR INTERFACES

product data sheet



GP37W2-BG41-24V
(GP-PRO 03 Compatible)

GP37W3-BG41-24V
(Pro-Designer Compatible)



GP37W2 & GP37W3 Blue/White Low Cost HMI

5.7" Operator Interface with RS-232/RS-422 Serial Port Connectivity

GP37W2-BG41-24V touch screen operator interface is supported with Pro-face's full-featured GP-PRO 03 HMI development software. HMI unit includes one RS232/RS422 serial communication port for direct connection to PLC's, temperature controllers, inverters, and other various serial devices. A program download tool port that doubles as a bar code reader input port during runtime operation is also included. Interface to your custom controller using GP-Pro 03 scripting language and write your own simple ASCII protocol.

GP37W3-BG41-24V touch screen operator interface includes additional application memory to work specifically with Pro-face's multi-platform Pro-Designer HMI development software. The unit includes one RS232/RS422 serial communication port in addition to the program download tool port that doubles as a bar code reader input port during operation. This unit is ideal for basic graphical HMI applications such as monitoring environmental chambers, tank levels, machine on/off status, part tracking, system event monitoring, heat treating etc.

FEATURES

- 5.7 Inch Touch Screen
- 8-Shade Blue/White LCD
- 320 x 240 Resolution
- UL, cUL, CE Certifications
- RS-232/422 Com. Port Configurable
- Wide-Ranging DC Power
- Bar Code Reader Support
- Multi-Language Support
- NEMA 4x/12 Rated

INFORMATION

**Powerful
secure data
collection
and sharing**



Various HMI software solutions available to match your needs:

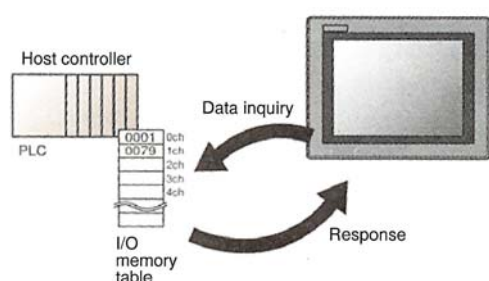
- Advanced featured Graphics Editor for drawing objects, animation, creating pre-configured operator objects, scripting, etc.
- Recipes Trending, Data Logging, Alarm Event/ Management, Security, etc.
- Multi-level security password features
- Graphic file import: BMP, JPEG, EMF, PNG
- Time-scheduler for production shift monitoring

SELECTION GUIDE

FEATURE	GP37W2-BG41-24V	GP37W3-BG41-24V
RS-232/RS-422 Com Port 25-pin D-sub	√	√
Bar Code Reader Support	√	√
UL Class 1 Div 2 Approved		√
Multi-Language Support	√	√
GP-Pro 03 Compatible	√	
Pro-Designer Compatible		√
Larger Application Memory		√

CONNECTIVITY: LARGEST SELECTION OF PROTOCOLS AVAILABLE!

Supports over 76 different PLC and motion controller protocols:



GE Fanuc
Series 90-30
Series 90-70
PowerMate (Motion Controller)
Fanuc Series 16, 18, 16i, 18i, 21i

Siemens
Simatic-S5
Simatic-S7-200, 300, 400

Rockwell
SLC500
Control Logix
MicroLogix
Compact Logix

Schneider
Twido
Quantum
Momentum
Micro & Nano
984/884

Mitsubishi
MELSEC-A
MELSEC-FX
MELSEC-Q
MELSEC-QNA

Koyo
DL205, 305, 405

IDEC
Micro
MicroSmart

Yokogawa

Matsushita

Fuji Electric

AND MORE....

GP37W2/W3 SPECIFICATIONS

FUNCTIONAL SPECIFICATIONS

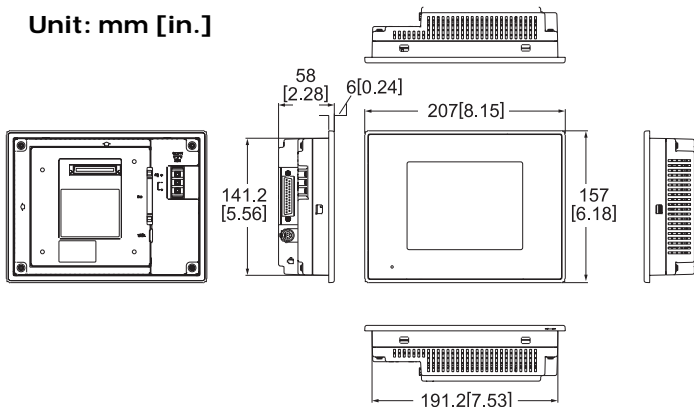
Model		GP37W2-BG41-24V	GP37W3-BG41-24V
Display	Type	Blue-mode LCD (Blue/White)	
	Backlight	CCFL (Service life: 25,000 hrs. at 25 degrees Celcius and 24 hr. operation)	
	Resolution	320 x 240 pixels	
	Effective Display Area	(W)115.2mm [4.53in.] x (H)86.4mm [3.4in.]	
	Brightness Control	8 levels of adjustment available via touch panel	
Memory	Application	1 MB FLASH EPROM	4 MB FLASH EPROM
Interface	Serial Interface	Asynchronous: RS-232C/RS-422, Data length: 7 or 8 bits, Stop bit: 1 or 2 bits, Parity: none, odd or even, Transmission Rate: 2400 to 115.2Kbps	
	Tool Port	8-pin mini Din for programming/bar code reader	

GENERAL SPECIFICATIONS

Electrical	Rated Voltage	24VDC
	Rated Voltage Range	20.4VDC to 27.6VDC
	Power Consumption	20W or less (TYP 10W)
Environmental	Ambient Operating Temp.	0°C to 50°C
	Storage Temperature	-20°C to 60°C
	Storage Humidity	20%RH to 85%RH (non-condensing)
	Vibration Resistance	10Hz to 25Hz (X, Y, Z directions for 30 minutes at 19.6ms ²)
Structural	Ratings	(For front panel of installed unit) Equivalent to IP65f, Nema #250 Type 4x/12
	External Dimensions	W207mm[8.15in.] x H157mm [6.18in.] x D58mm [2.28in.] (main unit only)
	Weight	1.1kg (2.4lb) or less (main unit only)

EXTERNAL DIMENSIONS

Unit: mm [in.]



SOFTWARE COMPATIBILITY



GP-PRO C-Package 03 HMI Development software
(For GP37W2-BG41-24V)



Pro-Designer 4.2.10 HMI Development software
(For GP37W3-BG41-24V)

ORDERING INFORMATION

ORDER NUMBER	DESCRIPTION
GP37W2-BG41-24V	5.7" Blue/white touch screen, 24V DC powered serial HMI
GP37W3-BG41-24V	5.7" Blue/White Pro-Designer ready, 24V DC powered serial HMI

OPTIONAL ACCESSORIES

GPW-CB02	Programming cable: PC RS-232, 9-pin D-sub application download cable
GPW-CB03	Programming cable: PC USB, application download cable
GP070-AT01	Installation Fasteners (included with unit)
GP37W2-DF00	Protective Hard Type Sheet (5 per pack)

Xycom Automation
734-429-4971
Fax: 734-429-1010
<http://www.xycom.com>

Customer Support Hotline:
734-944-0482



© 2007 Xycom Automation, Inc. Is a wholly owned subsidiary of Pro-face America, Inc. Specifications may change without notice. Xycom Automation is a trademark of Xycom Automation. Other brand or product names are the property of their respective owners.