

# Mod-Squad Stock Motor Modification Program

## Your motor, your way...now

The Mod-Squad stands on alert ready to tailor a LEESON or Lincoln stock motor to meet your modified motor needs in a few days or less. From one modified motor up to a few—there is no faster, more versatile source for mechanically or electrically “customerized” motors.

Starting with an off-the-shelf LEESON or Lincoln motor selected from the nearly 6,000 LEESON or Lincoln stock motors, the modifications listed here can be completed in the time frame noted for each item.

### Ordering Information

To order please specify the catalog number of the LEESON or Lincoln stock motor to be modified and the Mod-Squad modification catalog number or numbers desired.

An inventory of popular motors is maintained by the Modification Center for fast delivery. However, delivery of the modified motor is governed by availability of the stock motor. If a stock motor is shipped from a District Warehouse to the Modification Center in Indianapolis, IN, the cost of the inbound freight is added to the price of the modified motor and delivery of the modified motor will be extended by the inbound transit time.

Modification list prices are subject to the same discounts as apply to the motor. (Some motors, such as explosion-proof, may not be modified.) Days noted are working days excluding holidays and weekends—larger quantities may require additional leadtime.

### MOD-SQUAD Cancellation Policy

Modified motors may not be returned for credit or re-stocking. If a modification order is cancelled before shipment, a cancellation charge of double the modification charge will be invoiced to the customer. Any Mod-Squad order cancelled before modification is completed is subject to cancellation charges of 10% of total charges for that item.

Terms are net 30 days, FOB Indianapolis, IN, with freight prepaid on single shipments of 1,500 pounds or 3,000 dollars or more to the first destination within the continental United States, excluding Alaska.

## Index to Motor Modifications

Description	Mod-Squad Number	Page
Balancing - Discontinued - See Note page 398	L1	399
Bearing Modifications	L2	399
Blower Fan Kits - WATTSAYER®	L30	409
Brakemotor Modifications - LEESON Only	L3	400
CE Marking	L24	407
Condensate Drains - Totally Enclosed Motors	L8	401
Cords, Plugs & Grounding Provisions	L5	400
Drip Cover - Open, Drip-Proof Motors	L9	402
Dynamic Braking Boards - Micro Series - LEESON Only	L28	408
Encoder Kits - WATTSAYER® & SPEEDMASTER®	L29	409
Fungus Proofing and Tropicalization	L19	406
Leads - Reconnect, Remark or Extend	L10	402
Lint-Proof Textile Service Motors - LEESON Only	L17	406
Marine Service Motors - Three Phase, Totally Enclosed	L21	407
Motor Protection	L18	406
Mountings	L12	403
Nameplates	L13	405
Paint	L14	405
Remote Keypad Option - Micro Series - LEESON Only	L25	408
Rodent Screens - LEESON Only	L15	405
Severe Duty - Cast Iron Fan Covers - LEESON Only	L7	401
Shaft Modification	L22	407
Shaft Seals	L11	402
Space Heaters, Anti-Condensation	L16	405
Switches - Power or Electronic Starting	L6	401
Tachometer Mounting Provisions - DC Motors - LEESON Only	L23	407
Terminal Blocks - NEMA Motors	L27	408
Totally Enclosed Air Over Conversion	L22	407
Weatherproofing - Three Phase, Totally Enclosed Motors	L20	406
Larger Size Conduit Box - Lincoln Only	L31	409



## L1 Balancing

Two Days\*

The LEESON balancing modification has been discontinued due to high costs of re-balancing by an outside firm. Contact your sales office for a quote on special or precision balanced production motors, requiring a minimum order of 10 pieces or contact a LEESON Authorized Service Center for a quote on a Special balance modification.

## L2 Bearing Modifications

Two Days

**#L2a** Changing shielded bearings to sealed bearings on stock motors. 48, 56 and 143T-145T, Agricultural motors as well as all Washguard duty and Wash-Thru motors have sealed bearings as standard. Note: Adding sealed bearings to motors having grease fittings may not make the bearings regreaseable. Grease fittings will be removed and plugged.

NEMA Frame	Catalog Number	List Price
42	L2A42	192
48	L2A48	192
56	L2A56	192
143T-145T	L2A140	197
182T-184T	L2A180	215
213T-215T	L2A210	228
254T-256T	L2A250	401
284T-286T	L2A280	510
324T-326T	L2A320	671
364T-365T	L2A360	1,189
404T-405T	L2A400	1,231
444T-449T	L2A440	1,640

**#L2c** Change bearing grease on cast iron motors with open-type regreaseable bearings. Endbells and bearings are purged and repacked with low-temperature grease (Beacon #325 or equivalent) with a temperature range of -75°F to +250°F or high-temperature grease (Dow Corning DC44M or equivalent) with a temperature range of -40°F to +400°F. Specify grease to be used. Check with LEESON to verify the motor can operate in the temperature range required! LEESON Only.

NEMA Frame	IEC Frame	Catalog Number	List Price
254T-256T	—	L2C250	368
284T-286T	160	L2C280	411
324T-326T	180	L2C320	574
364T-365T	200	L2C360	614
404T-405T	225	L2C400	983
444T-449T	250	L2C440	1,351

**#L2b** Stock motors with shielded or sealed bearings – replace standard bearings with ones having low-temperature lubricant (Beacon #325 or equivalent), with a temperature range of -75°F to +250°F. Standard lubricant has a temperature range of -20°F to +300°F and is considered a high temp lubricant for these motors. Explosion proof motors can only be rated to a -13°F temperature.

NEMA Frame	Catalog Number	List Price
42	L2B42	192
48	L2B48	192
56	L2B56	192
143T-145T	L2B140	197
182T-184T*	L2B180	215
213T-215T*	L2B210	228

\*Rolled steel, cast iron or aluminum motors

**#L2d** Install insulated bearings to protect inverter-driven motors from inverter-sourced shaft voltages. May not be installed on Division 1 or Division 2 hazardous locations. Contact factory for lead time on installing insulated bearings.

NEMA Frame	Catalog Number	List Price
143T-145T	L2D140	476
182T-184T	L2D180	570
213T-215T	L2D215	1,676
254T-256T	L2D250	1,784
284T-286T	L2D280	1,784
324T-326T	L2D320	1,938
364T-365T	L2D360	1,981
404T-405T	L2D400	2,004
444T-449T	L2D440	2,221



# Mods / Factory Options

## L3 Brakemotor Modifications

Three Days

"Motors and BrakeKits sold separately"

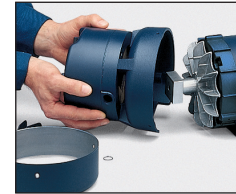
**#L3a** Convert brakemotors (TENV only) with standard enclosure brakes to weatherproof brakes by changing the disc brake. Weatherproof brakes have additional sealing and protection. Price includes cost of weatherproof brake.

Catalog Number	List Price
L3A3	840
L3A6	840
L3A10	857
L3A15	883
L3A25	972

**#L3b** Change the standard brake to one with a different torque rating. Specify torque rating. Standard enclosure brakes only—not weatherproof. Some torque limitations apply, specify torque rating. Catalog Number L3B. List price - \$164

**#L3c** Change Brake Coil Voltage. Change from standard coil voltage to 115 volts (for Stearns brand brakes only). Catalog Number L3C. List Price \$164

**#L3d** Install a LEESON BrakeKit. See page 276 for BrakeKits available and motors that can be converted. Specify the catalog number of both the stock motor and the BrakeKit. List Price \$326



BrakeKit Installation

**#L3e** Remove brake from stock brakemotor for customers supplying their own brake. Specify Catalog Number L3E. List Price \$335

**#L3f** Assemble double C-face coupler brake on C-face motor. MOD charge is for assembly only. Brake and motor are purchased separately. Specify the catalog number of the stock motor and coupler brake.

Catalog Number L3F56140 - 56C, 143TC, or 145TC motors. List Price \$326

Catalog Number L3F180210 - 182TC, 184TC, 213TC, or 215TC motors. List Price \$480

**#L3g** Change Brake Coil Voltage. Change from standard coil voltage to 200 volts (for Stearns brand brakes only).

Catalog Number L3G1.5-3 - 1.5 & 3 lb-ft brakes. List Price \$397

Catalog Number L3G6-10 - 6 & 10 lb-ft brakes. List Price \$397

## L5 Cords, Plugs and Grounding Provisions

Three Days

**#L5a** For single phase motors, install grounded line cord of type S.O., three-conductor oil resistant cord, connected in the conduit box or terminal panel, with strain relief. No plug. **Specify cord length, voltage and shaft rotation (clockwise or counterclockwise) viewed from the drive shaft end of the motor.**

Wire Gauge	Max Amp Rating Single Phase	Catalog Number 6 ft. or Less	List Price 6 ft. or Less	Catalog Number Each Add'l. Foot	List Price Each Add'l Foot to 10 ft. Max.
16	13	L5A16	160	L5A16ADD	3
14	18	L5A14	168	L5A14ADD	3
12	25	L5A12	176	L5A12ADD	4

**#L5b** Install 6-foot grounded type S.O. cord with plug, 115VAC single phase only. **Specify cord length, shaft rotation (clockwise or counterclockwise) viewed from the drive shaft end of the motor.**

HP	Catalog Number 6 ft. or Less	List Price 6 ft. or Less	Catalog Number Each Add'l. Foot	List Price Each Add'l Foot to 10 ft. Max.
1 and smaller	L5B	159	L5BADD	3

**#L5c** Add an additional grounding screw to the endbell of drip-proof or totally enclosed non-ventilated NEMA 48 or 56 frame motors. Meets UL 1081 swimming pool motor grounding provisions (includes slinger). Catalog Number L5C. List Price \$140



Grounded Cord w/Plug



IEC Motors  
DC Motors  
Gearmotors  
AC / DC Controls  
Accessories / Kits  
Mods / Factory Options  
X-Ref / Index  
Tech Information  
Terms / Warnings

**L6 Switches – Power or Electronic Starting**

**Three Days**

#L6a On-off switch for 2 HP and smaller single phase motors only. Install double-pole, single-throw switch in the conduit box, with switch guard and a 6-foot type S.O. cord with grounded plug, **115 VAC or 230 VAC—please specify. Also specify shaft rotation (clockwise or counterclockwise) viewed from the drive shaft end of the motor.**



On-Off Switch w/Guard

Rating	Catalog Number	List Price
16-20A/115V or 230V	L6A	339

#L6b Replace mechanical centrifugal switch on single phase motors 2HP and smaller with solid-state, encapsulated, electronic starting switch. Capacitor-start, induction-run motors only. **Subject to engineering approval.** Catalog Number L6B. List Price \$355

**L7 Severe Duty - Cast Iron Fan Covers - LEESON Only**

**Three Days**

#L7a Remove steel fan guard and install a cast iron fan guard on LEESON 150, G150 and 170 series NEMA and 193 series IEC TEFC cast iron motors to meet severe duty, mill and chemical duty specifications. Note: These motors have cast iron endbells, frame, and conduit box as standard. **Lincoln Motors has a line of Severe Duty motors that include a cast iron fan guard.** See page 100.

NEMA Frame	IEC Frame	Catalog Number	List Price
182T-184T	–	L7A180	356
213T-215T	–	L7A210	400
254T-256T	–	L7A250	489
284T-286T	160	L7A280	762
324T-326T	180	L7A320	790
364T-365T	200	L7A360	1,113
404T-405T	225	L7A400	1,206
444T-445T	250	L7A445	1,214
447T-449T	280	L7A449	1,238

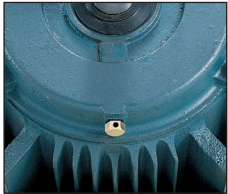


Cast Iron Fan Cover

**L8 Condensate Drains - Totally Enclosed Motors**

**Two Days**

#L8a 215T and smaller steel frame motors. Drill one or two condensation drain holes on the periphery or in the face of each endbell of steel frame 215T frame and smaller totally enclosed motors. **Specify location in both the shaft end and opposite endbell using a drawing or clockface analogy.** When specified, a drain can be added to the face of one endbell for shaft up or down mounting.



Condensate Drain

NEMA Frame	Catalog Number	List Price
215T and smaller	L8A40210	250
254T-365T	L8A250360	347
404T-449T	L8A400440	416

#L8b 182T and larger cast iron frame motors. Provides an additional one-way, cross-drilled stainless steel condensation drain on the periphery or in the face of each endbell. Provide a drawing or clockface analogy for position in each endbell.

NEMA Frame	Catalog Number	List Price
215T and smaller	L8B40210	250
254T-365T	L8B250360	347
404T-449T	L8B400440	416

- IEC Motors
- DC Motors
- Gearmotors
- AC / DC Controls
- Accessories / Kits
- Mods / Factory Options
- X-Ref / Index
- Tech Information
- Terms / Warnings



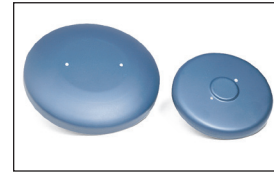
# Mods / Factory Options

## L9 Drip Cover – Open, Drip-Proof Motors

Two Days

#L9a Install a drip cover on steel frame motors. Price includes drip cover. **LEESON Only**

NEMA Frame	Catalog Number	List Price
48-145T	L9A40140	164
182T-184T	L9A180	178
213T-215T	L9A210	197



Drip Cover

#L9b Install a drip cover on cast iron motors. Price includes drip cover. **LEESON Only**

NEMA Frame	Catalog Number	List Price
182T-184T	L9B180	178
213T-215T	L9B210	197
254T-256T	L9B250	236

#L9c Install a drip cover on SPD, SRD and SSD Model Numbers. Not suitable for use on motors having NN in Notes column. **Lincoln Only**

NEMA Frame	Catalog Number	List Price
48-56*	L9C4856	164
56-145T	L9C56145	164
182T-184T	L9C182184	178
213T-215T	L9C213215	197

\* Motors having a 2.18 inch bolt circle for the mounting holes

## L10 Leads – Reconnect, Remark or Extend

Two Days

#L10a Re-Connect leads in the conduit box to a single voltage and/or for wye or delta connection. Most motors 444T frame and above are single voltage. Specify voltage and connection.

NEMA Frame	Catalog Number	List Price
48-145T	L10A40140	181
182T-184T	L10A180	287
213T-215T	L10A210	381
254T-256T	L10A250	427
284T-286T	L10A280	565
324T-326T	L10A320	638
364T-365T	L10A360	638
404T-405T	L10A400	715
444T-449T	L10A440	797

#L10c Extend leads up to 42 inches longer than standard by splicing. **Specify additional length required.**

NEMA Frame	Catalog Number	List Price
48-145T	L10C40140	181
182T-184T	L10C180	287
213T-215T	L10C210	381
254T-256T	L10C250	427
284T-286T	L10C280	565
324T-326T	L10C320	638
364T-365T	L10C360	638
404T-405T	L10C400	715
444T-449T	L10C440	715

#L10b Remark leads using metal markers. Any size motor. **Specify markings, letters or numbers. Specify Catalog Number L10B.** List Price \$192

#L10d Add crimp-type terminal lugs – steel frame motors. Lugs standard on LEESON cast iron motors. **Specify Catalog Number L10D.** List Price \$149

## L11 Shaft Seals

Three Days

#L11a Install an oil seal on the shaft end of 215T and smaller steel frame LEESON motors. May be installed on single, three phase or direct current motors, but not explosion-proof motors.

Catalog Number	List Price
L11A	477



L12 Mountings

#L12a Add a stamped steel rigid base to steel frame motors. For 182-4T frame motors, minimum 8.50" (TEFC, rigid, C face) or 8" (ODP, rigid, C face) frame length is required. **LEESON Only**

NEMA Frame	Catalog Number	List Price
42-48	L12A4248	192
56	L12A56	195
143T-145T	L12A140	195
182T-184T	L12A180	235
213T-215T	L12A210	287

Note: It is not possible to add a base to some three phase motors as the resulting rigid base motor will be subject to EISA mandated efficiency values. Contact the factory.

This Mod. cannot be done on an explosion proof motor for an F2 conduit box location.

#L12b Remove stamped steel rigid base from steel frame motors.

NEMA Frame	Catalog Number	List Price
42-56	L12B4256	295
143T-145T	L12B140	295

#L12c Install a NEMA C face on steel frame motors 215T and smaller. **Specify if the rigid base is to be removed. If so, add for modification #L12b listed above.** List Price includes C face Kit. **LEESON Only**

NEMA Frame	Catalog Number	List Price
42-56*	L12C4256	249
143T-145T	L12C140	249
182T-184T	L12C180	269
182T-184T**	L12C180U	269
213T-215T	L12C210	333

\*Adding a 48 C-Face results in a non-NEMA BA dimension.

\*\* Convert a 182T-184T frame motor to have a C-face dimensions of a 143T-145T or 182U-184U frame motor (AJ = 5 7/8", AK = 4 1/2"). The shaft dimensions and base location will not change.

#L12d Install a NEMA C face to 150, 170 or 199 series cast iron motors. **The rigid base cannot be removed from these cast iron frame motors.** List Price includes C Face Kit. **LEESON Only**

NEMA Frame	Catalog Number	List Price
182T-184T	L12D180	447
213T-215T	L12D210	487
254T-256T	L12D250	616
284T-286T	L12D280	745
324T-326T	L12D320	966
364T-365T	L12D360	1,050
404T-405T	L12D400	1,147
444T-445T	L12D440	1,410
447T-449T	L12D4479	1,490

#L12e Install a NEMA D flange to open or totally enclosed motors of steel frame construction in 182-4T frame and cast iron 150 and 170 series motors in 213T frames through 445T frame. Steel rigid base can be removed from steel frame 182-4T frame motors. **Specify and add for modification L12b.** Rigid base cannot be removed from cast iron frame motors. List Price includes D Flange. **LEESON Only**

NEMA Frame	Catalog Number	List Price
182T-184T	L12E180	447
213T-215T	L12E210	487
254T-256T	L12E250	616
284T-286T	L12E280	745
324T-326T	L12E320	966
364T-365T	L12E360	1,050
404T-405T	L12E400	1,407
444T-445T	L12E440	1,831

#L12f Convert standard F1 motors to F2, sidewall or ceiling mounting. Consists of repositioning the endbell vents and condensation drains where applicable and the conduit box lead hole. Note: If brakemotor, brake knob will be located at 6 o'clock. Note: Only the 56/140 frame motors can have the motor bases removed where needed. **LEESON or Lincoln Branded** motors where applicable.

NEMA Frame	Catalog Number	List Price
56-184T	L12F56180	381
213T-215T	L12F210	413
254T-326T	L12F250320	493
364T-449T	L12F360449	638

\* Three phase only; single phase motors cannot be converted. Please contact factory for Explosion proof motor approval for this modification. Washdown motors cannot be converted to F2.

#L12g Rotate standard conduit box position by 90° increments. **Specify by clock face, i.e. 9 o'clock, 12 o'clock, etc. for position (viewed from shaft end).** Consists of repositioning the endbell vents and condensation drains where applicable and the conduit box lead hole. Note: If brakemotor, brake knob will be rotated 90° from conduit box. **This mod. can no longer be offered on the 180 and 210 frame motors for the bases of these motors can no longer be removed without damaging the motor. List Price includes D Flange.**

NEMA Frame	Catalog Number	List Price
56-145T	L12G56140	381

\* Three phase rolled steel only; single phase motors cannot be converted.

IEC Motors

DC Motors

Gearmotors

AC / DC Controls

Accessories / Kits

Mods / Factory Options

X-Ref / Index

Tech Information

Terms / Warnings



L12 Mountings

Two Days

#L12h Install a metric (IEC) B5 flange to 190 series cast aluminum or cast iron AC motors and DC steel frame motors. List Price includes B-5 Kit. **LEESON Only**

IEC Frame	Catalog Number	List Price
63	L12H63	242
71	L12H71	250
71 (DC)	L12HD71	250
80	L12H80	260
80 (DC)	L12HD80	260
90	L12H90	264
90 (DC)	L12HD90	264
100	L12H100	290
112	L12H112	300
100/112 (DC)	L12HD100112	300
132	L12H132	339
160	L12H160	487
180	L12H180	554
200	L12H200	687
225	L12H225	878

#L12i Install C Face kit to an IEEE-841 motor. Modification includes C Face kit and new Inpro shaft seal. Bases cannot be removed from these motors.

NEMA Frame	Catalog Number	List Price
143T-145T	L12I140	314
182T-184T	L12I180	447
213T-215T	L12I210	487
254T-256T	L12I250	616
284T/TS-286T/TS	L12I280	745
324T/TS-326T/TS	L12I320	966
364T-365T	L12I360	1,605
404T-405T	L12I400	1,646

#L12j Install a metric (IEC) B14 face to 190 series cast aluminum or cast iron AC motors and DC steel frame motors. List Price includes B-14 Kit. **LEESON Only**

IEC Frame	Catalog Number	List Price
63	L12J63	234
71	L12J71	242
71 (DC)	L12JD71	242
80	L12J80	249
80 (DC)	L12JD80	249
90	L12J90	259
90 (DC)	L12JD90	259
100	L12J100	282
112	L12J112	290
100/112 (DC)	L12JD100112	290
132	L12J132	332
160	L12J160	477

#L12k Reposition feet and nameplate (to relocate conduit box) on AC aluminum-frame IEC motors (63 thru 90L frame). **LEESON Only**

IEC Frame	Catalog Number	List Price
63	L12K63	170
71	L12K71	180
80	L12K80	192
90	L12K90	240

#L12l Install C Face. For motors having AF/AAF in the model number. List Price includes C Face Kit. **Lincoln Only**

NEMA Frame	Catalog Number	List Price
182T-184T	L12L182184	269
213T-215T	L12L213215	333
254T-256T	L12L254256	376
284T-286T	L12L284286	422

#L12m Install C Face. For motors having SRF in the model number. List Price includes C Face Kit. **Lincoln Only**

NEMA Frame	Catalog Number	List Price
56 (203 brg)	L12M56203	249
56 (205 brg)	L12M56205	249

#L12n Install C Face. For motors having SSF in the model number. List Price includes C Face Kit. **Lincoln Only**

NEMA Frame	Catalog Number	List Price
143-145T	L12N143145	249
182-184T	L12N182184	269
213-215T	L12N213215	333

#L12o Install C Face. For motors having SF in the model number, having a cast iron endbell. List Price includes C Face Kit. **Lincoln Only**

NEMA Frame	Catalog Number	List Price
324T/TS-326T/TS	L12O324326	966
364T/TX-365T/TS	L12O364365	1,050
404T/TS-405T/TS	L12O404405	1,147
444T/TS-445T/TS	L12O444445	1,410
447T/TS-449T/TS	L12O447449	1,490

#L12p Install C Face. For motors having CCN in the model number. List Price includes C Face Kit. **Lincoln Only**

NEMA Frame	Catalog Number	List Price
143-145T	L12P143145	249



IEC Motors  
DC Motors  
Gearmotors  
AC / DC Controls  
Accessories / Kits  
Mods / Factory Options  
X-Ref / Index  
Tech Information  
Terms / Warnings

#L12q Install C Face. For motors having CCF in the model number. List Price includes C Face Kit. **Lincoln Only**

NEMA Frame	Catalog Number	List Price
143T-145T	L12Q143145	249
182T-184T	L12Q182184	447
213T-215T	L12Q213215	487
254T-256T	L12Q254256	616
284T-286T	L12Q284286	745
342T-326T	L12Q324326	966

#L12r Install C Face. For motors having CCS in the model number. List Price includes C Face Kit. **Lincoln Only**

NEMA Frame	Catalog Number	List Price
143T-145T	L12R143145	249
182T-184T	L12R182184	447
213T-215T	L12R213215	487
254T-256T	L12R254256	616
284T/TS-286T/TS	L12R284286	745
342T/TS-326T/TS	L12R324326	966
364T/TS-365T/TS	L12R364365	1,050
404T/TS-405T/TS	L12R404405	1,147
444T/TS-445T/TS	L12R444445	1,410

L13 Nameplates

Three Days

#L13a Provide an extra motor nameplate-unmounted. (Nameplate only) Add customer part number or change to other voltage or frequency service. **Unmounted nameplates are not available for explosion-proof motors. Note: Markings for UL and CSA cannot be included on unmounted nameplates that are shipped loose and not installed on a motor.** ① Add \$1 (net) for each additional Aluminum or Mylar nameplate. ② Add \$2 (net) for each additional stainless steel nameplate. ③ Catalog Number L13A. List Price per motor \$138  
60Hz single phase motors cannot be re-rated to 50Hz **Must Provide Date Code Information**

#L13b Replace, existing nameplate on provided motor. Add customer part number or change to other voltage or frequency service and mount to motor. ① List Price per motor \$160  
**Note: Not available for motors that are all stainless steel construction.**

#L13c Replace standard aluminum nameplate with stainless steel nameplate. LEESON cast iron, WASHGUARD and severe duty motors have stainless steel nameplates as standard. ① Add \$2 (net) for each additional stainless steel nameplate. ② List Price per motor \$164  
① Must specify catalog number and date code of motor's existing nameplate. Nameplates changed to a single voltage connection does not mean motors would be re-connected to this connection unless the L10 Mod is also requested. ② Additional nameplates must be identical.

L14 Paint

Two Days\*

#L14a Repaint motor to another LEESON or Lincoln stock paint color. A sample of choices include LEESON blue, white epoxy, farm duty red, light gray epoxy, black, or black epoxy. Powder coat paint is not available as a modification. For Lincoln motors, your choices include: Lincoln gray, severe duty blue, black or gloss white. Not available on Lincoln Wash-thru motors. **Specify color.**  
\*Note: Epoxy paint requires extra curing time. Please allow one additional day.

	Frame	Catalog Number	List Price
NEMA	42-215T	L14A40210	164
NEMA	254T-365T	L14A250360	332
NEMA	404T-449T	L14A400440	531
IEC	63-90	L14A6390	164
IEC	100-225	L14A100225	333

L15 Rodent Screens - LEESON Only

Two Days

#L15a Add rodent screens to open drip-proof motors, cast iron and steel frame, 326T and smaller.

NEMA Frame	Catalog Number	List Price
182T-S213T	L15A40210	261
254T-286T	L15A250280	596
324T-326T	L15A320	799

L16 Space Heaters, Anti-Condensation

Five Days

#L16a Add anti-condensation space heaters to totally enclosed or open motors. Standard space heater voltage is 115 VAC. **Heaters for 230 or 460 VAC are available. Specify circuit voltage.** May be installed in single, three phase or direct current motors. Explosion proof motors are not included. Washdown duty motors are **not** included.

NEMA Frame	Catalog Number	List Price
145T and smaller	L16A40140	363
182T-215T	L16A180210	458
254T-365T	L16A250360	684
404T-449T	L16A400440	898





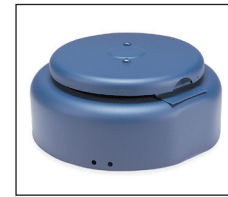
## Mods / Factory Options

### L17 Lint-Proof Textile Service Motors - LEESON Only

Two Days

#L17a Convert a standard totally enclosed-fan cooled motor to textile service by modifying the fan cover to reduce "snagging" of lint and reduction in cooling air for the motor. Price includes kit cost.

NEMA Frame	Catalog Number	List Price
56-145T	L17A40140	332
182T-184T	L17A180	433



Lint-Proof Kit

### L18 Motor Protection

Two Days

#L18a Thermostats on the winding. Install one or more thermostats in the windings of NEMA frame AC motors on the brush plate of DC motors or on the inside of frame on Sub-FHP DC motors. These are pilot or signal devices only, to be used in series with a motor controller or starter to remove power from the motor. Red color leads are brought into the conduit box.

**Specify normally open or closed contacts.** Normally closed thermostats connected in series. **Thermostats cannot be installed in explosion-proof or Washdown duty motors.**

#L18b For a motor equipped with a thermal overload, exchange a manual or automatic reset thermal overload to the opposite style. Delivery is dependent upon availability of the thermal overload. **LEESON Only**  
Not for Explosion Proof motors

Note: Automatic thermal overloads return power to the motor automatically after cooling-off. Automatic thermal overloads should not be used in installations where a sudden restart could cause injury.

Type	NEMA Frame	Catalog Number	No. of Devices	List Price
Single Phase	All	L18AS40210	1	207
Three Phase	42-215T	L18AT40210	2	235
Three Phase	254T-365T	L18AT250360	2	638
Three Phase	404T-449T	L18AT400440	2	797
Direct Current	42-56	L18AD4056	1	235

NEMA Frame	Catalog Number	List Price
48-56	L18B4056	261
143T-145T	L18B140	266
182T-184T	L18B180	304
213T-215T	L18B210	426

#L18c Thermistors on the winding. As standard, three (3) thermistors are furnished, one per phase. As the critical temperature of the motor's winding is reached, the resistance of the thermistor changes radically, causing operation of a control relay. Not available on washdown duty motors, explosion proof motors or medium voltage motors.

Note: Thermostat and Thermistor Descriptions:

Thermostats are made of two or three different metal strips that each expand at different rates when heated. They are sandwiched together to make a laminated strip, with a set of electrical contacts at one end securely mounted to a platform. When the strip is heated it warps and the contacts open as a threshold temperature is exceeded. Thermostats are reliable, noise immune and easily configured into control schemes. Typically, inverter-duty motors have thermostats as standard equipment.

Thermistors are conductive ceramic materials, whose resistance remains relatively constant over a broad temperature range, then changes abruptly at a design threshold point, creating essentially a solid-state thermal switch. Attached control modules register this abrupt resistance change and produce an amplified output signal, usually a contact closure or fault trip annunciation. Thermistors are more accurate and faster responding than thermostats.

Type	NEMA Frame	Catalog Number	No. of Devices	List Price
Three Phase	42-215T	L18CT40210	3	265
Three Phase	254T-365T	L18CT250360	3	668
Three Phase	404T-449T	L18CT400440	3	827

### L19 Fungus Proofing and Tropicalization

Two Days

#L19a Special treatment of the motors windings and mechanical parts to resist tropical environments. Not available on brakemotors, washguard duty motors and explosion proof motors.

\*\* AC or DC Motors

NEMA Frame	Catalog Number	List Price
42-215T**	L19A40210	274
254T-365T	L19A250360	398
404T-449T	L19A400440	636

### L20 Weatherproofing – Three Phase, Totally Enclosed Motors\*

Five Days

#L20a Treatment of mechanical and electrical components of LEESON steel frame totally enclosed motors to resist weather in application outside or in high-moisture conditions. NOTE: LEESON 150 and 170 series cast iron motors are weatherproofed as standard. LEESON WASHGUARD motors are also well-suited for outside and high-moisture applications. Not available on brakemotors or explosion proof motors. \*\* AC or DC Motors

NEMA Frame	Catalog Number	List Price
42-215T**	L20A40210	268

\* For single phase weatherproofed motors, see Washguard motors on pages 141 and 171.



**L21 Marine Service (IEEE 45) Motors – Three Phase, Totally Enclosed - LEESON Only**

**Five Days**

- #L21a In order for a motor to be approved for the L21 MOD, the motor must meet:
- IP 54 minimum protection
  - Motor frame, conduit box and endbells must be cast iron construction - cast iron fan cover must be added
  - Motor's temperature rise must meet 70 degrees C or less and must be rated at 1.15 or higher Service Factor (S.F.)
- Contact your local sales office for more information

NEMA Frame	Catalog Number	List Price
56-215T**	L21A40210	274
254T-365T	L21A250360	461
404T-405T	L21A400	684
444T-449T	L21A440	865

**L22 Shaft Modifications**

**Five Days**

- #L22a Drill and tap one hole in either end of motors shaft or mill a flat on the drive end shaft extension. **Provide details of hole, thread size or flat with the order.** List price is per modification. For example, a motor modified by adding a tapped hole and flat would be priced by adding the list price twice.
- 3 inches maximum depth hole. Does not include keyway modification.

NEMA Frame	Catalog Number	List Price
42-145T	L22A40140	248
182T-184T	L22A180	261
213T-215T	L22A210	408
250T-280T	L22A250280	456

- #L22b TEFC to air-over service. Convert a motor from totally enclosed, fan cooled construction to totally enclosed, air-over service by removing fan cover and fan and cutting off the fan end shaft. The modified motor must be mounted in the air stream of the driven fan for cooling purposes.

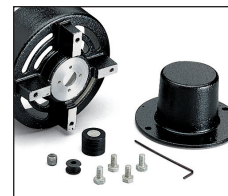
NEMA Frame	Catalog Number	List Price
42-145T	L22B40140	248
182T-184T	L22B180	261
213T-215T	L22B210	363

**L23 Tachometer Mounting Provisions – DC Motors - LEESON Only**

**Five Days**

- #L23a Add a tachometer mounting kit to NEMA frame size Direct Current motors. See page 282 for availability of tachometer mounting kits. Does not include tachometer.

NEMA Frame	Catalog Number	List Price
S56	L23AS56	477
SS56	L23ASS56	592
56/145T	L23A56140	613



Tach Kit Adaptor

**L24 CE Marking\***

**Five Days**

- #L24 Modify provided motor to comply with the nameplate designation, lead markings and connection diagrams required by the IEC34 motor specification. Modification includes a nameplate with the CE logo or a separate CE decal and a CE Declaration of Conformity document. Not available on DC motors below 75 V.D.C. **LEESON Only**



Catalog Number	List Price
L24	229

- #L24b CE Marking Kit - Includes new nameplate only with data in IEC34 format, lead markers for IEC lead designations, a connection diagram, and a CE Declaration of Conformity document. The nameplate will have the CE logo, or a CE decal will be provided. **LEESON Only**
- UL will not be stamped on nameplate - Must provide motors date code.

Catalog Number	List Price
L24B	138

\* Explosion proof motors cannot be built or modified to meet CE.



## Mods / Factory Options

### L25 Micro Series Inverter - Remote Keypad Option - LEESON Only

Two Days

#L25 A remote keypad for Micro Series inverters is available only as a factory installed option. The keypad is mounted in a gasketed steel faceplate that must be mounted in an enclosure for protection. An inverter modified for remote operation can only be operated from the remote keypad. Price includes remote keypad, faceplate, cable and factory modification charges. Not available on Washguard Duty Inverters. See page 208 for Remote Keypad kits for the Sub-Micro Series Inverters.



Description	Catalog Number	List Price
Keypad with 2.5 foot cable	L25A25	557
Keypad with 5 foot cable	L25A50	608
Keypad with 10 foot cable	L25A100	711

### L27 Terminal Blocks – NEMA Motors - LEESON Only

Five Days

#L27a Add a terminal block in the conduit box of rolled steel motor from 56 to 215T-frame. Install ring terminals on the motor leads.

- Conduit box on 56-frame motors will be changed to a longer version to accommodate the terminal board
- Use with single-phase or three-phase motors with no protector
- Specify connection voltage and direction of rotation for single-phase
- Not intended for 56, 143T & 145T-frame TENV or ODP motors that have a built-in conduit box. Contact LEESON for the suitability of adding a terminal board to one of these motors
- Cannot be added to WASHGUARD Duty motors

NEMA Frame	Catalog Number	List Price
56/143T/145T	L27A56140	268
182T/184T/S213T	L27A180	300
213T-215T	L27A210	330

#L27b Install a terminal block kit in the conduit box of a cast iron NEMA frame motor. Price includes kit. (IEC motors have a terminal block installed as standard.)

NEMA Frame	Catalog Number	List Price
180/210T	L27B180210	330
250/280T	L27B250280	390
320/360T	L27B320360	447
400/440T	L27B400440	587

### L28 Dynamic Braking Board – Micro Series Drives - LEESON Only

Two Days

#L28 Install Dynamic Braking board in Micro Series drive. Note: Does not include Dynamic Braking resistor, which is ordered as a separate line item. See Micro Series accessory section of catalog for resistor selection. See page 363 for Dynamic Brake kits for the Sub-Micro Series inverters.

HP Rating	Voltage	Catalog Number	List Price
1/2 - 3HP	All	L28A174184	1,075
5HP	200-230V	L28A174185	1,127
5HP	460-480V	L28A174185	1,127
5HP	550-575V	L28A174184	1,075
7 1/2HP	200-230V	L28A174192	1,059
7 1/2HP	460-480V	L28A174193	1,059
7 1/2HP	550-575V	L28A174193	1,059
10-60HP	All	L28A174192	1,059



## L29 Encoder Kits – WATTSAYER® & SPEEDMASTER® Motors

Two Days

#L29a Assemble a stock Encoder Kit on a WATTSAYER® motor. Price is for assembly only. Motor and kit are purchased separately. **Specify motor and kit numbers.** **Note:** The assembly of an encoder kit on a WATTSAYER® motor requires the removal of the external fan. The use of a Blower Fan Kit is strongly encouraged for proper cooling!

NEMA Frame	Catalog Number	List Price
56-215T	L29A56215	288
254T-324T	L29A250320	465
360T-405T	L29A360400	525

#L29b Assemble a stock Encoder Kit on a SPEEDMASTER® motor. Includes assembly of conduit box kit ECB175926 on 215T-449T frame motors. Price is for assembly only. Motor and kits are purchased separately. **Specify motor and kit numbers.** LEESON Only

NEMA Frame	Catalog Number	List Price
143T-215T	L29B140210	204
254T-365T	L29B250360	433
404T-449T	L29B400440	663

#L29c Available on Inverter Duty CTAC Motors that have Model Number ending with Q10. Price is for assembly only. Encoder kit, Mounting kit and Motor sold separately. Lincoln Only

NEMA Frame	Catalog Number	List Price
56-215T	L29C56210	204
254T-365T	L29C250360	433
404T-445T	L29C400440	663

## L30 Blower Fan Kits – WATTSAYER® Motors

Two Days

#L30b Install a blower fan kit on a WATTSAYER® motor. Price is for assembly only. Motor and kit are purchased separately. **Specify motor and kit numbers.** LEESON Only

NEMA Frame	Catalog Number	List Price
56-215T	L30B56210	204
254T-326T	L30B250320	353
360T-440T	L30B360440	522

## L31 Conduit Box Kits – Larger Size - Lincoln Only

#L31a Install larger size conduit box. AF, MD, SD and SF Model Numbers, S and H Efficiency Codes

NEMA Frame	Catalog Number	List Price
213T-215T	L31A213215	176
254T-256T	L31A254256	197
284T-286T	L31A284286	213
324T-326T	L31A324326	242
364T-365T	L31A364365	283
404T-405T	L31A404405	370

#L31b Install larger size conduit box. AF, AAF, CF, CS, CP, SD and SF Model Numbers, P and B Efficiency Codes

NEMA Frame	Catalog Number	List Price
143T-184T	L31B143184	161
213T-215T	L31B213215	176
254T-256T	L31B254256	197
284T-286T	L31B284286	213
324T-326T	L31B324326	242
364T-365T	L31B364365	283
404T-405T	L31B404405	370
444T-445T	L31B444449	533



# CUSTOMIZED AND MODIFIED PRODUCTS

## CUSTOM MOTORS, GEARBOXES & GEARMOTORS

LEESON is a leading designer and manufacturer of application-specific AC and DC motors and gearmotors in sub-fractional, fractional and integral horsepower sizes. We offer a database of over 30,000 custom designs, experienced application and design engineering teams, to ensure the best, most cost-effective custom motor solution.

## CUSTOM MULTI-SPEED & LOW-SPEED MOTORS

LEESON's PDQ Modular Production Program utilizes specially designed and standard components to make almost any imaginable NEMA frame multi-speed or low-speed motor available when you need it. We pride ourselves on fast turnaround times on highly customized motors.

Custom motors include two, three and four-speed motors and speed ranges of 900, 720, 600, 450 and 300 RPMs. We also specialize in non-standard shaft designs.

For quotations, availability and application assistance, phone toll-free to our Canadian manufacturing facility at 1-800-463-1797.



- IEC Motors
- DC Motors
- Gearmotors
- AC / DC Controls
- Accessories / Kits
- Mods / Factory Options
- X-Ref / Index
- Tech Information
- Terms / Warnings

Below is a listing of a few of our Factory “Build-up” options. Please contact our local Sales office for more information.

ADDITIONAL LEAD LENGTH	GROUND PROVISIONS
HIGH ALTITUDE	HARDWARE
AMBIENT	HIGH INERTIA LOAD
CONDUIT BOXES	INSULATION
BALANCE	LEADS
BEARINGS	LUBRICATION
ROLLER BEARINGS	MARINE DUTY
INSULATED BEARINGS	NAMEPLATES
BLOWER TYPES	PAINT
BRAKES	SCREENS
CONNECTIONS / CORDS	SEALS & SLINGERS
WYE DELTA	SEVERE DUTY
PART WIND START	SERVICE FACTOR
DOCUMENTATION - SUBMITTAL DATA	SHAFTS
DOWELING	SPACE HEATERS
DRAINS	TACHOMETERS - SEE ENCODERS
ENCODERS	TACONITE DUTY - SEE INPRO SEALS
END TURN BRACING	TERMINAL BLOCKS / STRIPS
END BRACKETS - FACES & FLANGES	TESTS
FREQUENCY - Other than 60HZ	THERMAL PROTECTION
GREASE FITTINGS	VERTICAL MODIFICATION
GREASE: LOW TEMP	VIBRATION DETECTOR
GREASE: HIGH TEMP	VOLTAGE - SPECIAL

- IEC Motors
- DC Motors
- Gearmotors
- AC / DC Controls
- Accessories / Kits
- Mods / Factory Options
- X-Ref / Index
- Tech Information
- Terms / Warnings



# Cross Reference Exception Codes

IEC Motors
DC Motors
Gearmotors
AC / DC Controls
Accessories / Kits
Mods / Factory Options
X-Ref / Index
Tech Information
Terms / Warnings

## LEESON Product Base Exceptions

- B01 Install base kit 175032 (Extra cost)
- B02 Install base kit 175033 (Extra cost)
- B03 Install base kit 175034 (Extra cost)
- B04 Install base kit 175035 (Extra cost)
- B05 Install base kit 175036 (Extra cost)
- B06 Install base kit 175037 (Extra cost)
- B07 Install base kit 175038 (Extra cost)
- B08 Install base kit 175039 (Extra cost)
- B09 Install base kit 175040 (Extra cost)
- B10 Install base kit 175041 (Extra cost)
- B11 Install base kit 175042 (Extra cost)
- B12 Install base kit 175043 (Extra cost)
- B13 Install base kit 175044 (Extra cost)
- B14 Install base kit 175045 (Extra cost)
- B15 Install base kit 175046 (Extra cost)
- B16 Install base kit 175047 (Extra cost)
- B17 Install base kit 175048 (Extra cost)
- B18 Install base kit 175049 (Extra cost)
- B19 Install base kit 175088 (Extra cost)
- B20 Install base kit 175089 (Extra cost)
- B21 Install base kit 175090 (Extra cost)
- B22 Install base kit 175091 (Extra cost)
- B23 Install base kit 175092 (Extra cost)
- B24 Install base kit 175093 (Extra cost)
- B25 Install base kit 175094 (Extra cost)
- B26 Install base kit 175095 (Extra cost)
- B27 Install base kit 175097 (Extra cost)
- B28 Install base kit 175098 (Extra cost)
- B29 Install base kit 175127 (Extra cost)
- B30 LEESON motor has a 56 frame base
- B31 LEESON motor has rigid base
- B32 LEESON motor has resilient base
- B33 LEESON motor has no base
- B34 LEESON's motor base is not removable
- B35 LEESON motor has base with mounting holes for 56 & 143-5T
- B36 LEESON base mounting holes not 'Drop-in' replacement
- B37 Install base kit M1760006 (Extra cost)
- B38 LEESON motor has 184JM base and shaft

## LEESON Product Construction Exceptions

- C01 LEESON motor has steel frame
- C02 LEESON motor has cast iron frame
- C03 LEESON motor has mechanical switch
- C04 Reassemble LEESON motor to F2 mounting
- C05 LEESON motor has base with mounting holes for 56, 143-5T and 5/8" Nema 56 shaft
- C06 LEESON motor is not BISSC certified
- C07 LEESON motor is capacitor start/capacitor run design
- C08 LEESON motor is normal efficiency
- C09 LEESON motor has double shielded ball bearings
- C10 LEESON motor is capacitor start/induction run design
- C11 LEESON motor has 1.0 service factor
- C12 LEESON motor is ball bearing design
- C13 LEESON motor is 208-230 volts
- C14 LEESON motor has steel fan-guard
- C15 LEESON motor is premium efficiency design
- C16 LEESON motor has ball bearing instead of roller bearing drive end
- C17 LEESON motor does not have extended thru-bolts
- C18 LEESON motor has 145TC face with 182T base
- C19 LEESON motor requires C face adapter
- C20 LEESON motor is 1650 RPM
- C21 LEESON motor has no cord or plug
- C22 LEESON motor is IP54
- C23 LEESON motor is 1625 RPM
- C24 LEESON motor is 1075 RPM
- C25 LEESON motor is class B insulated
- C26 LEESON motor is Class I Group D, Class II Groups F & G
- C27 LEESON motor is 60/50HZ
- C28 LEESON motor has external capacitor
- C29 LEESON motor is PSC design

- C30 LEESON does not have tapped-hole (as standard) for pulse generator
- C31 LEESON gearbox mounting face includes 3-point mounting
- C32 LEESON motor is dual voltage rated - 115/230
- C33 LEESON armature voltage is 90V DC
- C34 LEESON motor is 230V only
- C35 LEESON motor is non-reversible
- C36 LEESON motor is reversible
- C37 LEESON motor shaft endshield is totally enclosed
- C38 Install explosion proof conduit box 175026 (Extra cost)
- C39 LEESON motor has 1.15 service factor
- C40 LEESON motor has 1.25 service factor
- C41 LEESON motor has 1.35 service factor
- C42 LEESON motor has a 145T "C" face and shaft with welded on base
- C43 LEESON motor may not be used on 190-208/380-416V 50HZ at full rated HP
- C44 IEEE 841 modification required - reference mod squad motor modifications L26
- C45 LEESON motor has cast iron C face
- C46 LEESON motor is 60HZ Only
- C47 LEESON motor is 208-230/460V
- C48 LEESON motor is class F insulated
- C49 LEESON motor is EPAAct efficiency
- C50 LEESON motor is design B
- C51 LEESON motor is all stainless steel
- C52 LEESON motor has 12 leads
- C53 LEESON motor has standard paint
- C54 LEESON motor is 460 Volt only
- C55 LEESON motor has a solid-state switch
- C56 LEESON motor does not rodent screens

## LEESON Product Enclosure Exceptions

- E01 LEESON motor is totally enclosed non-ventilated
- E02 LEESON motor is totally enclosed fan-cooled
- E03 LEESON motor is drip proof

## LEESON Product Frame Size Exceptions

- F01 LEESON frame size is 48
- F02 LEESON frame size is S56
- F03 LEESON frame size is 56
- F04 LEESON frame size is 56C
- F05 LEESON frame size is 56H
- F06 LEESON frame size is 145T
- F07 LEESON frame size is 145TC
- F08 LEESON frame size is 182T
- F09 LEESON frame size is 184T
- F10 LEESON frame size is 184TC
- F11 LEESON frame size is 184JM
- F12 LEESON frame size is 215T
- F13 LEESON frame size is 286T
- F14 LEESON frame size is 326T
- F15 LEESON frame size is 364T
- F16 LEESON frame size is 365T
- F17 LEESON frame size is 405T
- F18 LEESON frame size is 444T
- F19 LEESON frame size is 445T
- F20 LEESON frame size is 447T
- F21 LEESON frame size is D63D
- F22 LEESON frame size is 143T
- F23 LEESON frame size is 404T
- F24 LEESON frame size is 213TC
- F25 LEESON frame size is 449T
- F26 LEESON frame size is 256JM
- F27 LEESON frame size is 284JM
- F28 LEESON frame size is 286JM
- F29 LEESON frame size is 56HC
- F30 LEESON frame size is SS56
- F31 LEESON frame size is S213T
- F32 LEESON frame size is 326TS
- F33 LEESON frame size is 324TS
- F34 LEESON frame size is 284TC
- F35 LEESON frame size is 324TC



Continued On Next Page

## LEESON Product Horsepower Exceptions

- H01 LEESON motor is rated 1/2 HP
- H02 LEESON motor is rated 1 HP
- H03 LEESON motor is rated 1/3 HP
- H04 LEESON motor is rated 1/4 HP
- H05 LEESON motor is rated 4.0 KW/5.5 HP
- H06 LEESON motor is rated 1/6 HP
- H07 LEESON motor is rated 3/4 HP

## LEESON Product Kit Exceptions

- K01 Install AC metric (63 frame) B5 flange kit 175850 (Extra cost)
- K02 Install AC metric (71 frame) B5 flange kit 175852 (Extra cost)
- K03 Install AC metric (80 frame) B5 flange kit 175854 (Extra cost)
- K04 Install AC metric (90 frame) B5 flange kit 175856 (Extra cost)
- K05 Install AC metric (100 frame) B5 flange kit 175984 (Extra cost)
- K06 Install AC metric (112 frame) B5 flange kit 175986 (Extra cost)
- K07 Install AC metric (132 frame) B5 flange kit 175988 (Extra cost)
- K08 Install AC metric (160 frame) B5 flange kit 175890 (Extra cost)
- K09 Install AC metric (180 frame) B5 flange kit 175890 (Extra cost)
- K10 Install AC metric (63 frame) B14 flange kit 175851 (Extra cost)
- K11 Install AC metric (71 frame) B14 flange kit 175863 (Extra cost)
- K12 Install AC metric (80 frame) B14 flange kit 175855 (Extra cost)
- K13 Install AC metric (90 frame) B14 flange kit 175857 (Extra cost)
- K14 Install AC metric (100 frame) B14 flange kit 175985 (Extra cost)
- K15 Install AC metric (112 frame) B14 flange kit 175987 (Extra cost)
- K16 Install AC metric (132 frame) B14 flange kit 175989 (Extra cost)
- K17 Install AC metric (160 frame) B14 flange kit 175991 (Extra cost)
- K18 Install DC metric (71 frame) B5 flange kit 175106 (Extra cost)
- K19 Install DC metric (80 frame) B5 flange kit 175108 (Extra cost)
- K20 Install DC metric (90 frame) B5 flange kit 175108 (Extra cost)
- K21 Install DC metric (100 frame) B5 flange kit 175137 (Extra cost)
- K22 Install DC metric (71 frame) B14 flange kit 175107 (Extra cost)
- K23 Install DC metric (80 frame) B14 flange kit 175109 (Extra cost)
- K24 Install DC metric (90 frame) B14 flange kit 175129 (Extra cost)
- K25 Install DC metric (100 frame) B14 flange kit 175130 (Extra cost)
- K26 Install NEMA steel frame C Face kit 175661 (Extra cost)
- K27 Install NEMA steel frame C Face kit 175294 (Extra cost)
- K28 Install NEMA steel frame C Face kit 175297 (Extra cost)
- K29 Install NEMA steel frame C Face kit 175075 (Extra cost)
- K30 Install NEMA steel frame C Face kit 175076 (Extra cost)
- K31 Install NEMA steel frame C Face kit 175078 (Extra cost)
- K32 Install NEMA steel frame C Face kit 175181 (Extra cost)
- K33 Install NEMA steel frame C Face kit 175077 (Extra cost)
- K34 Install NEMA steel frame C Face kit 175969 (Extra cost)
- K35 Install NEMA steel frame C Face kit 175691 (Extra cost)
- K36 Install NEMA steel frame C Face kit 175303 (Extra cost)
- K37 Install NEMA steel frame C Face kit 175007 (Extra cost)
- K38 Install NEMA steel frame C Face kit 175693 (Extra cost)
- K39 Install NEMA steel frame C Face kit 175008 (Extra cost)
- K40 Install NEMA steel frame C Face kit 175845 (Extra cost)
- K41 Install NEMA steel frame C Face kit 175844 (Extra cost)
- K42 Install NEMA steel frame C Face kit 175304 (Extra cost)
- K43 Install NEMA cast iron C Face kit 175655 (Extra cost)
- K44 Install NEMA cast iron C Face kit 175066 (Extra cost)
- K45 Install NEMA cast iron C Face kit 175068 (Extra cost)
- K46 Install NEMA cast iron C Face kit 175067 (Extra cost)
- K47 Install NEMA cast iron C Face kit 175069 (Extra cost)
- K48 Install NEMA cast iron C Face kit 175191 (Extra cost)
- K49 Install NEMA cast iron C Face kit 175058 (Extra cost)
- K50 Install NEMA cast iron C Face kit 175061 (Extra cost)
- K51 Install NEMA cast iron C Face kit 175059 (Extra cost)
- K52 Install NEMA cast iron C Face kit 175062 (Extra cost)
- K53 Install NEMA cast iron C Face kit 175060 (Extra cost)
- K54 Install NEMA cast iron C Face kit 175063 (Extra cost)
- K55 Install NEMA cast iron C Face kit 175199 (Extra cost)
- K56 Install NEMA cast iron C Face kit 175664 (Extra cost)
- K57 Install Chemical Service/Severe Duty (182/184T) kit 175663 (Extra cost)
- K58 Install Chemical Service/Severe Duty (213/215T) kit 175050 (Extra cost)
- K59 Install Chemical Service/Severe Duty (254/256T) kit 175051 (Extra cost)
- K60 Install Chemical Service/Severe Duty (284/286T) kit 175052 (Extra cost)

- K61 Install Chemical Service/Severe Duty (324/326T) kit 175053 (Extra cost)
- K62 Install Chemical Service/Severe Duty (364/365T) kit 175054 (Extra cost)
- K63 Install Chemical Service/Severe Duty (404/405T) kit 175055 (Extra cost)
- K64 Install Chemical Service/Severe Duty (444/445T) kit 175056 (Extra cost)
- K65 Install NEMA D Flange (182/184T) kit 175694 (Extra cost)
- K66 Install NEMA D Flange (182/184T) kit 175658 (Extra cost)
- K67 Install NEMA D Flange (213/215T) kit 175114 (Extra cost)
- K68 Install NEMA D Flange (213/215T) kit 175115 (Extra cost)
- K69 Install NEMA D Flange (254/256T) kit 175116 (Extra cost)
- K70 Install NEMA D Flange (364/365T) kit 175995 (Extra cost)
- K71 Install NEMA D Flange (254/256T) kit 175192 (Extra cost)
- K72 Install NEMA D Flange (284/286T) kit 175118 (Extra cost)
- K73 Install NEMA D Flange (284/286T) kit 175119 (Extra cost)
- K74 Install NEMA D Flange (324/326T) kit 175120 (Extra cost)
- K75 Install NEMA D Flange (324/326T) kit 175121 (Extra cost)
- K76 Install NEMA D Flange (364/365T) kit 175657 (Extra cost)
- K77 Install Textile "Lint-Proof" kit 175024 (Extra cost)
- K78 Install Textile "Lint-Proof" kit 175025 (Extra cost)
- K79 Install Textile "Lint-Proof" kit 175695 (Extra cost)
- K80 Install Drip-Cover (213/215JP) kit 175305 (Extra cost)
- K82 Install Drip-Cover (56) kit 175004 (Extra cost)
- K83 Install Drip-Cover (143/145T) kit 175004 (Extra cost)
- K84 Install Drip-Cover (182/184T) kit 175614 (Extra cost)
- K85 Install Drip-Cover (213/215T) kit 175849 (Extra cost)
- K86 Install conduit box kit M1760007 (Extra cost)
- K87 Install conduit box kit M1760021 (Extra cost)
- K88 Install NEMA Wattsaver cast iron C face kit 175869 (Extra cost)
- K89 Install Drip-Cover (56) kit 175298 (Extra cost)
- K90 Install NEMA Wattsaver cast iron C face kit 175842 (Extra cost)
- K91 Install Brake kit 175178 (Extra cost)
- K92 Install AC Metric (200 frame) B5 flange 175994 (Extra cost)
- K93 Install AC Metric (200 frame) B5 flange 175995 (Extra cost)
- K94 Install NEMA Cast Iron C-Face kit 175842 (Extra cost)
- K95 Install NEMA Cast Iron C-Face kit 175958 (Extra cost)
- K96 Install NEMA Cast Iron C-Face kit 175454 (Extra cost)
- K97 Install NEMA Cast Iron C-Face kit 175394 (Extra cost)
- K98 Install NEMA D Flange (324/326T) kit 175455 (Extra cost)
- K99 Install NEMA D Flange (404/405T) kit 175956 (Extra cost)
- K100 Install NEMA D Flange (404/405T) kit 175957 (Extra cost)
- K101 Install NEMA D Flange (213/215T) Wattsaver kit 175959 (Extra cost)
- K102 Install NEMA D Flange (182/184T) Wattsaver kit 175396 (Extra cost)
- K103 Install Drip-Cover (182/184T) Cast Iron kit 175961 (Extra cost)
- K104 Install Drip-Cover (213/215TT) Cast Iron kit 175962 (Extra cost)
- K105 Install Drip-Cover (254/256T) Cast Iron kit 175963 (Extra cost)
- K106 Install Chemical Service/Severe Duty (447/449T) kit 175891 (Extra cost)

## LEESON Product Protector Exceptions

- P01 LEESON motor has automatic reset protector
- P02 LEESON motor has manual reset protector
- P03 LEESON motor has no thermal overload protector

## LEESON Product Shaft Exceptions

- S01 LEESON motor has a 182-4T shaft extension
- S02 LEESON motor has a 213-5T shaft extension
- S03 LEESON motor has a 254-6T shaft extension
- S04 LEESON motor shaft is 1 inch longer
- S05 LEESON motor has shaft that is a TS not T
- S06 LEESON motor has phosphatized shaft
- S07 LEESON has .625 inch diameter shaft
- S08 LEESON has single output shaft
- S09 LEESON shaft center-line height from base is 1.48 inches
- S10 LEESON shaft on left side facing the gearbox
- S11 LEESON shaft center-line height from the base is 1.67 inches
- S12 LEESON motor has 1 1/8" shaft
- S13 LEESON motor has 416 stainless shaft
- S14 LEESON shaft dimensions not "drop in" replacement

## LEESON Product Thermostat Exceptions

- T01 LEESON motor has no thermostats
- T02 LEESON motor has normally closed thermostats

IEC Motors

DC Motors

Gearmotors

AC / DC Controls

Accessories / Kits

Mods / Factory Options

X-Ref / Index

Tech Information

Terms / Warnings

