

Pump Motors

Explosion Proof
Motors

Automotive
Duty Motors

Pump
Motors

Washguard
Motors

Agricultural
Duty Motors

HVAC / Fan
Motors

Special Voltage
Motors

Definite
Purpose Motors

Brake Motors



- Jet pump, JM & JP pump, carbonator pump and fire pump motors
- Washdown duty pump motors available
- Explosion proof jet pump motors available
- Three phase and single phase models
- Premium efficient JM & JP pump motors available
- 1.15 service factor or better
- Jet pump motors have quick connect terminal boards
- Drip-proof and totally enclosed designs
- Drip-cover kits available on drip-proof designs
- Threaded jet pump motors have stainless steel shafts
- Jet pump single phase motors have automatic overload protection
- 1-year warranty on standard motors, 2-year warranty on "G" models and 3-year warranty on premium efficiency models
- UL recognized and CSA certified

Applications:

Designed for various applications that you may find in the pumping industry where direct coupled motor to pump is required.



Pump Motors

Jet Pump Motors - Single Phase

General Specifications:

- NEMA 56 C face mounting flange
- Keyed shafts made of carbon steel
- Threaded shafts made of 416 grade stainless steel
- Dual rotation - Key shaft motors only
- Quiet flow-through ventilation system
- Double sealed bearings on shaft end
- Terminal board with quick connects
- Locked shaft-end bearings
- Automatic overload protection
- UL recognized and CSA certified



Keyed Shaft - Drip-Proof - Single Phase - C Face Less Base

HP	SYN RPM 60 Hz	NEMA Frame	Catalog Number	Stock	List Price	Model Number	App. Wgt. (lbs)	Voltage	Over-load Prot.	F. L. Amps @ 230 V	Service Factor	"C" Dim. (Inches)	♥Notes
1/2	3600	S56C	100204.00	√	346	A4C34DC4	19	115/208-230	Auto.	3.4	1.60	9.49	S, MX, 30
3/4	3600	S56C	100205.00	√	456	A4C34DC5	21	115/208-230	Auto.	5.1	1.50	9.99	S, MX, 30
1	3600	S56C	100722.00	√	492	A4C34DC21	24	115/208-230	Auto.	5.7	1.40	10.49	S, MX, 30
1 1/2	3600	56C	110288.00	√	646	U6C34DC18	31	115/208-230	Auto.	9.0	1.30	11.34	S, US, 30
2	3600	56C	110289.00	√	833	U6C34DC19	37	115/208-230	Auto.	10.5	1.25	12.34	S, US, 30
3	3600	56C	117715.00	√	851	U6K34DC19	49	230	Auto.	12.8	1.15	13.55	S, US, 30, 53

Specifications are subject to change without notice

♥ Note listing on inside back flap

Threaded Shaft - Drip-Proof - Single Phase - C Face Less Base

HP	SYN RPM 60 Hz	NEMA Frame	Catalog Number	Stock	List Price	Model Number	App. Wgt. (lbs)	Voltage	Over-load Prot.	F. L. Amps @ 230 V	Service Factor	"C" Dim. (Inches)	♥Notes
1/2	3600	S56J	100207.00	√	333	A4C34DC7	19	115/208-230	Auto.	3.4	1.60	10.00	S, MX, 30
3/4	3600	S56J	100208.00	√	433	A4C34DC8	21	115/208-230	Auto.	5.1	1.50	10.50	S, MX, 30
1	3600	S56J	100723.00	√	455	A4C34DC22	23	115/208-230	Auto.	5.7	1.40	11.00	S, MX, 30
1 1/2	3600	56J	110292.00	D	632	U6C34DC21	31	115/208-230	Auto.	9.0	1.30	11.34	S, US, 30
	3600	56J	119090.00	√	531	119090.00	25	115/230	Auto.	9.2	1.30	11.89	S, MX, 30
2	3600	56J	110293.00	D	779	U6C34DC22	37	115/208-230	Auto.	10.5	1.25	12.34	S, US, 30
	3600	56J	119091.00	√	717	119091.00	38	115/230	Auto.	10.6	1.20	13.73	S, MX, 30
3	3600	56J	117716.00	D	804	U6K34DC20	51	230	Auto.	12.8	1.15	14.15	S, US, 30, 53
	3600	56J	119092.00	√	733	119092.00	38	115/230	Auto.	14.7	1.15	13.17	S, MX, 30, 53

D - Item to be deleted once inventory is depleted

♥ Note listing on inside back flap

Specifications are subject to change without notice

View On-line Technical Information



Explosion Proof Motors

Automotive Duty Motors

Pump Motors

Washguard Motors

Agricultural Motors

HVAC / Fan Motors

Special Voltage Motors

Definite Purpose Motors

Brake Motors

Pump Motors

Jet Pump Motors - Single Phase

Threaded Shaft - Totally Enclosed - Single Phase • C Face Less Base

HP	SYN RPM 60 Hz	NEMA Frame	Catalog Number	Stock	List Price	Model Number	App. Wgt. (lbs)	Voltage	Over- load Prot.	F. L. Amps @ 230 V	Service Factor	"C" Dim. (Inches)	♥Notes
1/2	3600	56J	113955.00	√	391	A6C34FC44	22	115/208-230	Auto.	3.8	1.60	11.31	S, US, 30
3/4	3600	56J	113956.00	√	465	A6C34FC45	26	115/208-230	Auto.	5.0	1.50	11.81	S, US, 30
1	3600	56J	113639.00	√	567	A6C34FC41	30	115/208-230	Auto.	6.0	1.25	12.31	S, US, 30
1 1/2	3600	56J	113640.00	√	674	A6C34FC42	34	115/208-230	Auto.	8.5	1.00	12.81	S, US, 30
2	3600	56J	113641.00	√	797	U6C34FC34	41	115/208-230	Auto.	10.0	1.00	13.81	S, US, 30

Specifications are subject to change without notice

♥ Note listing on inside back flap

Threaded Shaft - Totally Enclosed - Single Phase - C Face With Base

HP	SYN RPM 60 Hz	NEMA Frame	Catalog Number	Stock	List Price	Model Number	App. Wgt. (lbs)	Voltage	Over- load Prot.	F. L. Amps @ 230 V	Service Factor	"C" Dim. (Inches)	♥Notes
1/2	3600	56J	113637.00	√	450	A6C34FK49	23	115/208-230	Auto.	3.8	1.60	11.31	S, US, 30
3/4	3600	56J	113638.00	√	480	A6C34FK50	26	115/208-230	Auto.	5.0	1.50	11.81	S, US, 30
1	3600	56J	113957.00	√	581	A6C34FK53	28	115/208-230	Auto.	6.0	1.25	12.31	S, US, 30
1 1/2	3600	56J	113958.00	√	691	A6C34FK54	34	115/208-230	Auto.	8.5	1.00	12.81	S, US, 30
2	3600	56J	113959.00	√	814	U6C34FK55	43	115/208-230	Auto.	10.0	1.00	13.81	S, US, 30

Specifications are subject to change without notice

♥ Note listing on inside back flap

Threaded Shaft - Explosion Proof - Totally Enclosed - Single Phase - C Face Less Base

HP	SYN RPM 60 Hz	NEMA Frame	Catalog Number	Stock	List Price	Model Number	App. Wgt. (lbs)	Voltage	Over- load Prot.	F. L. Amps @ 230 V	Service Factor	"C" Dim. (Inches)	♥Notes
1/2	3600	56J	116188.00	√	799	A6C34XC31	35	115/208-230	Auto.	3.8	1.00	13.96	S, US
3/4	3600	56J	116186.00	√	900	A6C34XC32	40	115/208-230	Auto.	5.0	1.00	14.46	S, US
1	3600	56J	116185.00	√	965	A6C34XC33	49	115/208-230	Auto.	6.0	1.00	14.96	S, US
1 1/2	3600	56J	116183.00	√	1,237	A6C34XC34	52	115/208-230	Auto.	8.5	1.00	15.46	S, US
2	3600	56J	116181.00	√	1,346	A6C34XC35	54	115/208-230	Auto.	10.5	1.00	16.46	S, US

Specifications are subject to change without notice

♥ Note listing on inside back flap

Drip-Cover Kits

Each kit includes one drip-cover, designed to protect motors from rain, snow and ice when mounted outdoors in a vertical position.



Drip Cover Kits For Jet Pump Motors

Frame	Catalog Number	App. Wgt. (lbs)	List Price	♥Notes
48-S56	175003.00	2	55	
48-S56	175298.00	2	55	P
56 / 143T-145T	175004.00	2	64	

Note P - For motors having a "P" suffix on date code ♥ Note listing on inside back flap
Specifications are subject to change without notice



View On-line Technical Information



Pump Motors

Jet Pump Motors - Three Phase



General Specifications:

- NEMA 56 C face mounting flange
- Threaded shafts made of 303 grade stainless steel
- CCW rotation facing lead end
- Quiet flow-through ventilation system
- Double sealed bearings on shaft end
- Terminal board with quick connects
- Locked shaft end bearings
- Automatic overload protection on explosion proof Jet Pump motors
- UL recognized and CSA certified

Threaded Shaft - Drip-Proof - Three Phase - C Face Less Base

HP	SYN RPM 60 Hz	NEMA Frame	Catalog Number	Stock	List Price	Model Number	App. Wgt. (lbs)	Voltage	F. L. Amps @ 230 V	% F.L. Eff.	Service Factor	"C" Dim. (Inches)	Notes
1/3	3600	S56J	102197.00	√	347	C4T34DC25	15	208-230/460	1.4	68.0	1.35	9.50	S, US
	1800	S56J	103723.00	√	378	C4T17DC50	16	208-230/460	1.8	64.3	1.35	10.00	S, MX
1/2	3600	S56J	102198.00	√	365	C4T34DC26	17	208-230/460	1.8	69.0	1.25	9.75	S, US
	1800	S56J	103724.00	√	410	C4T17DC51	18	208-230/460	2.0	68.0	1.25	10.00	S, MX
3/4	3600	S56J	101637.00	√	440	C4T34DC20	18	208-230/460	2.4	79.0	1.15	10.00	S, US
	1800	S56J	103725.00	√	484	C4T17DC52	19	208-230/460	2.8	75.0	1.25	10.50	S, MX
1	3600	S56J	101638.00	√	488	C4T34DC21	25	208-230/460	3.0	78.0	1.15	11.25	S, US
	1800	56J	117872.00	√	516	C6T17DC89	26	208-230/460	4.2	78.5	1.15	10.87	S, US
1 1/2	3600	56J	113891.00	√	583	C6T34DC64	28	208-230/460	4.2	81.5	1.15	11.34	S, US
	1800	56J	117873.00	√	609	C6T17DC87	29	208-230/460	5.6	78.5	1.15	11.87	S, US
2	3600	56J	113892.00	√	693	C6T34DC65	33	208-230/460	5.6	82.5	1.15	11.84	S, US
	1800	56J	117874.00	√	696	C6T17DC88	34	208-230/460	6.2	78.5	1.15	11.87	S, US
3	3600	56J	113893.00	√	819	C6T34DC66	36	208-230/460	7.6	84.0	1.15	12.34	S, US
5	3600	56J	116698.00	√	898	C6T34DC92	45	208-230/460	12.4	85.5	1.15	13.88	S, US

Specifications are subject to change without notice

♥ Note listing on inside back flap

Threaded Shaft - Drip-Proof - Three Phase - C Face With Base

HP	SYN RPM 60 Hz	NEMA Frame	Catalog Number	Stock	List Price	Model Number	App. Wgt. (lbs)	Voltage	F. L. Amps @ 230 V	% F.L. Eff.	Service Factor	"C" Dim. (Inches)	Notes
1/2	3600	S56J	102199.00	√	382	C4T34DK8	17	208-230/460	1.8	69.0	1.25	9.75	S, US
	1800	S56J	103726.00	√	423	C4T17DK12	18	208-230/460	2.4	68.0	1.25	10.50	S, MX
3/4	3600	S56J	101776.00	√	440	C4T34DK5	18	208-230/460	2.4	79.0	1.15	10.00	S, US
	1800	S56J	103727.00	√	499	C4T17DK13	19	208-230/460	2.8	75.0	1.25	10.50	S, MX
1	3600	S56J	101775.00	√	491	C4T34DK6	26	208-230/460	3.0	78.0	1.15	11.25	S, US
	1800	56J	117875.00	√	529	C6T17DK34	28	208-230/460	4.2	78.5	1.15	10.87	S, US
1 1/2	3600	56J	114203.00	√	598	C6T34DK5	33	208-230/460	4.2	81.5	1.15	11.34	S, US
	1800	56J	117876.00	√	630	C6T17DK35	34	208-230/460	5.6	78.5	1.15	11.87	S, US
2	3600	56J	114202.00	√	713	C6T34DK6	35	208-230/460	5.6	82.5	1.15	11.84	S, US
3	3600	56HJ	114201.00	√	840	C6T34DK7	35	208-230/460	8.0	84.0	1.15	11.84	S, US
5	3600	56HJ	116699.00	√	922	C6T34DK18	47	208-230/460	12.4	85.5	1.15	13.88	S, US

Specifications are subject to change without notice

♥ Note listing on inside back flap

View On-line Technical Information



Explosion Proof Motors

Automotive Duty Motors

Pump Motors

Washguard Motors

Agricultural Motors

HVAC / Fan Motors

Special Voltage Motors

Definite Purpose Motors

Brake Motors

Pump Motors

Jet Pump Motors - Three Phase

Threaded Shaft - Totally Enclosed - Three Phase - C Face Less Base

HP	SYN RPM 60 Hz	NEMA Frame	Catalog Number	Stock	List Price	Model Number	App. Wgt. (lbs)	Voltage	F. L. Amps @ 230 V	% F.L. Eff.	Service Factor	"C" Dim. (Inches)	♥Notes
1/2	3600	56J	114931.00	√	413	C6T34FC49	21	208-230/460	2.0	67.0	1.15	10.81	S, US
3/4	3600	56J	114208.00	√	456	C6T34FC37	22	208-230/460	2.4	75.5	1.15	11.31	S, US
1	3600	56J	114207.00	√	542	C6T34FC38	25	208-230/460	3.2	77.0	1.15	11.31	S, US
1 1/2	3600	56J	114206.00	√	564	C6T34FC39	31	208-230/460	4.2	81.5	1.15	12.31	S, US
2	3600	56J	114205.00	√	714	C6T34FC40	40	208-230/460	5.6	82.5	1.15	12.81	S, US
3	3600	56J	114204.00	√	772	C6T34FC41	52	208-230/460	7.6	84.0	1.15	13.31	S, US

Specifications are subject to change without notice

♥ Note listing on inside back flap

Threaded Shaft - Totally Enclosed - Three Phase - C Face With Base

HP	SYN RPM 60 Hz	NEMA Frame	Catalog Number	Stock	List Price	Model Number	App. Wgt. (lbs)	Voltage	F. L. Amps @ 230 V	% F.L. Eff.	Service Factor	"C" Dim. (Inches)	♥Notes
3/4	3600	56J	113028.00	√	547	C6T34FK34	23	208-230/460	2.4	75.5	1.15	11.31	S, US
1	3600	56J	113029.00	√	559	C6T34FK35	24	208-230/460	3.2	77.0	1.15	11.31	S, US
1 1/2	3600	56J	113030.00	√	576	C6T34FK36	31	208-230/460	4.2	81.5	1.15	12.31	S, US
2	3600	56J	113031.00	√	722	C6T34FK37	36	208-230/460	5.6	82.5	1.15	12.81	S, US
3	3600	56HJ	113032.00	√	788	C6T34FK38	39	208-230/460	7.6	84.0	1.15	13.31	S, US

Specifications are subject to change without notice

♥ Note listing on inside back flap

Threaded Shaft - Explosion Proof - TEFC/TENV Three Phase - C Face Less Base

HP	SYN RPM 60 Hz	NEMA Frame	Catalog Number	Stock	List Price	Model Number	App. Wgt. (lbs)	Voltage	F. L. Amps @ 230 V	% F.L. Eff.	Service Factor	"C" Dim. (Inches)	♥Notes
1/2	3600	56J	116187.00	√	987	A6T34EC28	33	208-230/460	1.6	82.5	1.00	12.87	S, US, 12, 47
1	3600	56J	116184.00	√	1,062	A6T34XC31	33	208-230/460	3.6	77.0	1.00	13.46	S, US, 13
1 1/2	3600	56J	116182.00	√	1,089	A6T34XC30	48	208-230/460	4.6	81.5	1.00	14.46	S, US, 13
2	3600	56J	116180.00	√	1,138	A6T34XC29	50	208-230/460	6.0	82.5	1.00	14.96	S, US, 13

Note 12 - TENV

♥ Note listing on inside back flap

Specifications are subject to change without notice



View On-line Technical Information





Pump Motors

Washguard® Jet Pump Motors

Washdown duty three phase jet pump motors for industrial service. These motors include all of the features of LEESON's White Duck Washguard® motors with the addition of a 56J threaded shaft for use on jet pumps. For demanding pump applications in wet, humid, or washdown environments.



Washguard® - Jet Pump - Threaded Shaft Three Phase - TEFC - C Face Less Base

HP	SYN RPM 60 Hz	NEMA Frame	Catalog Number	Stock	List Price	Model Number	App. Wgt. (lbs)	Voltage	F. L. Amps @ 230 V	% F.L. Eff.	Service Factor	"C" Dim. (Inches)	♥Notes
3/4	3600	56J	116774.00	√	714	C6T34WC14	23	208-230/460	2.4	75.5	1.15	10.81	S, US
1	3600	56J	116775.00	√	830	C6T34WC15	35	208-230/460	3.2	77.0	1.15	10.81	S, US
1 1/2	3600	56J	116776.00	√	883	C6T34WC13	42	208-230/460	4.2	81.5	1.15	11.81	S, US
2	3600	56J	116777.00	√	1,010	C6T34WC11	47	208-230/460	5.6	82.5	1.15	12.31	S, US
3	3600	56J	116778.00	√	1,059	C6T34WC10	49	208-230/460	7.6	84.0	1.15	13.25	S, US

Specifications are subject to change without notice

♥ Note listing on inside back flap

Washguard® - Jet Pump - Threaded Shaft Three Phase - TEFC - C Face With Base



HP	SYN RPM 60 Hz	NEMA Frame	Catalog Number	Stock	List Price	Model Number	App. Wgt. (lbs)	Voltage	F. L. Amps @ 230 V	% F.L. Eff.	Service Factor	"C" Dim. (Inches)	♥Notes
3/4	3600	56J	116779.00	√	733	C6T34WK12	24	208-230/460	2.4	75.5	1.15	10.81	S, US
1	3600	56J	116780.00	√	851	C6T34WK13	36	208-230/460	3.2	77.0	1.15	10.81	S, US
1 1/2	3600	56J	116781.00	√	923	C6T34WK11	43	208-230/460	4.2	81.5	1.15	11.81	S, US
2	3600	56J	116782.00	√	1,026	C6T34WK10	48	208-230/460	5.6	82.5	1.15	12.31	S, US
3	3600	56J	116783.00	√	1,093	C6T34WK9	50	208-230/460	7.6	84.0	1.15	13.25	S, US

Specifications are subject to change without notice

♥ Note listing on inside back flap

View On-line Technical Information



Explosion Proof Motors

Automotive Duty Motors

Pump Motors

Washguard Motors

Agricultural Motors

HVAC / Fan Motors

Special Voltage Motors

Definite Purpose Motors

Brake Motors



Features:

- 303 stainless shaft
- Capacitor run low speed, PSC high speed
- Meets California Energy Commission Appliance Regulations 2008
- Integrated timer interface
- Timer mode or manual mode
- Over current protection
- Battery backup - program saver
- LCD display with backlight
- Class B insulation
- High efficiency - high and low speed
- Rotation - CCW pump end

Jet Pump - 2-speed - With Timer
Single Phase - Drip Proof - C Face Less Base

Available June 2015

HP	RPM	Frame	Catalog Number	List Price	App. Wgt. (lbs)	Voltage	Over-load Prot.	F. L. Amps	"C" Dim. (Inches)	♥Notes
3/4 - .10	3600/1800	56J	117913.00		26	115	Auto	2.9	12.30	S, MX
1 - .12	3600/1800	56J	117914.00		30	230	Auto	4.2	13.05	S, MX
2 - .25	3600/1800	56J	117915.00		42	230	Auto	4.2	13.55	S, MX
3 - .38	3600/1800	56J	117916.00		45	230	Auto	5.4	14.29	S, MX

Contact Sales Office for List Price information
Specifications are subject to change without notice

♥ Note listing on inside back flap

Carbonator Pump Motors

Application information:

Used in liquid transfer pumps that you may see in vending machines ideal for compact pump to motor mount applications.

Features:

- Interchangeable with OEM units
- Automatic overload protection
- Ball bearing designs

Single Phase - Drip-Proof - Rigid or Resilient Base

HP	SYN RPM 60 Hz	NEMA Frame	Catalog Number	Stock	List Price	Model Number	App. Wgt. (lbs)	Voltage	F. L. Amps	Service Factor	"C" Dim. (Inches)	♥Notes
1/4	1800	48Y	103520.00	√	204	A4S17DR62	14	208-240	2.3-2.4	1.0	7.69	S, MX, 63
	1800	48Y	103530.00	√	215	A4S17DR63	16	115/230	4.3-2.2	1.0	8.75	S, MX, 63
1/3	1800	48Y	103521.00	√	218	A4S17DR64	14	100-120/200-240	5.5-5.6/2.7-2.8	1.0	7.69	S, MX, 60
	1800	48Y	103531.00	√	224	A4S17DR65	14	100-120/200-240	5.5-5.6/2.7-2.8	1.0	7.69	S, MX, 63
1/2	1800	48Y	103522.00	√	244	A4S17DR66	17	100-120/200-240	7.1-7.2/3.4-3.6	1.0	8.75	S, MX, 63
3/4	1800	48Y	103523.00	√	293	A4S17DR67	19	115/230	10.4/5.2	1.0	9.15	S, MX, 63

Note 60 - Rigid Base

♥ Note listing on inside back flap

Note 63 - Resilient Base

Specifications are subject to change without notice



View On-line Technical Information



Explosion Proof Motors

Automotive Duty Motors

Pump Motors

Washguard Motors

Agricultural Duty Motors

HVAC / Fan Motors

Special Voltage Motors

Definite Purpose Motors

Brake Motors

General Specifications:

For use with close-coupled pumps having NEMA JP mounting and shaft dimensions. In such applications, the pump impeller is mounted directly on the motor shaft.

For use where the environment is relatively clean and dry. For outdoor use, an enclosure or drip cover may be preferred.

Features:

- Open drip-proof construction with rigid base mounting.
- Locked bearing on shaft end limits axial shaft movement
- Drip cover kits available
- UL recognized and CSA certified
- Single phase designs are capacitor start, induction run
- All 180 and 210 frame rolled steel motors have class F insulation

Single Phase - Drip-Proof - C Face With Base

HP	SYN RPM 60 Hz	NEMA Frame	Catalog Number	Stock	List Price	Model Number	App. Wgt. (lbs)	Voltage	F. L. Amps @ 230 V	Service Factor	"C" Dim. (Inches)	♥Notes
5	3600	184JP	131881.00	√	1,438	C184K34DK6	95	230	22.0	1.15	19.38	S, MX
7/12	3600	213JP	140646.00	√	1,708	C213K34DK1	121	230	37.0	1.15	14.17	S, MX, 37
10	3600	215JP	140647.00	√	2,303	C215K34DK1	138	230	47.0	1.15	15.67	S, MX, 37

Specifications are subject to change without notice

♥ Note listing on inside back flap

Three Phase - Drip-Proof -C Face With Base & C Face Less Base thru 3 HP

HP	SYN RPM 60 Hz	NEMA Frame	Catalog Number	Stock	List Price	Model Number	App. Wgt. (lbs)	Voltage	F. L. Amps @ 230 V	% F.L. Eff.	Service Factor	"C" Dim. (Inches)	♥Notes
1	1800	143JP	122093.00	√	556	C143T17DK9	41	208-230/460	3.2	85.5	1.15	18.48	S, US, 39
	1800	143JPV	122094.00	√	556	C143T17DC20	41	208-230/460	3.2	85.5	1.15	18.48	S, US, 39
1 1/2	3600	143JP	122095.00	√	678	C143T34DK6	40	208-230/460	4.0	84.0	1.15	17.68	S, US, 39
	3600	143JPV	122096.00	√	678	C143T34DC8	40	208-230/460	4.0	84.0	1.15	17.68	S, US, 39
1800	145JP	G121846.00	√	579	C145T17DK16	38	208-230/460	4.4	84.0	1.15	17.68	S, US, 39	
	145JP	122097.00	√	665	C145T17DK25	44	208-230/460	4.8	86.5	1.15	18.18	S, US, 39	
	145JPV	122098.00	√	665	C145T17DC45	44	208-230/460	4.8	86.5	1.15	18.18	S, US, 39	
	145JPV	122099.00	√	693	C145T34DC15	43	208-230/460	4.8	85.5	1.15	16.18	S, US, 39	
2	1800	145JP	G121847.00	√	604	C145T17DK17	46	208-230/460	5.8	84.0	1.15	18.48	S, US, 39
	1800	145JP	122100.00	√	681	C145T17DK26	45	208-230/460	5.8	86.5	1.15	18.68	S, US, 39
	1800	145JPV	122101.00	√	681	C145T17DC46	45	208-230/460	5.8	86.5	1.15	18.68	S, US, 39
3	3600	145JP	G121849.00	√	760	C145T34DK12	46	208-230/460	8.4	84.0	1.15	16.68	S, US, 39
	3600	145JP	122102.00	√	865	C145T34DK18	47	208-230/460	7.2	86.5	1.15	13.62	S, US, 39
	3600	145JPV	122103.00	√	865	C145T34DC16	47	208-230/460	7.2	86.5	1.15	13.62	S, US, 39
1800	182JP	G131882.00	√	790	C182T17DK20	58	208-230/460	9.2	86.5	1.15	19.91	S, MX, 14, 45	
	1800	182JP	199770.00	√	908	C182T17DK44	123	208-230/460	8.4	89.5	1.15	15.35	S, CN
5	3600	182JP	G131884.00	√	912	C182T34DK13	65	208-230/460	12.0	85.5	1.15	19.65	S, MX, 45
	3600	182JP	199097.00	√	1,047	C182T34DK19	131	208-230/460	11.8	86.5	1.15	15.35	S, CN
1800	184JP	G131883.00	√	907	C184T17DK29	70	208-230/460	13.2	87.5	1.15	20.41	S, MX, 45	
	1800	184JP	199772.00	√	1,022	C184T17DK44	166	208-230/460	18.6	91.0	1.15	17.68	S, CN

Shaded items are less base and have drip covers

Green items are Premium Efficient

Specifications are subject to change without notice

♥ Note listing on inside back flap

Continued On Next Page

View On-line Technical Information



Explosion Proof Motors

Automotive Duty Motors

Pump Motors

Washguard Motors

Agricultural Motors

HVAC / Fan Motors

Special Voltage Motors

Definite Purpose Motors

Brake Motors

Pump Motors

JP Pump Motors - Single & Three Phase

Three Phase - Drip-Proof -C Face With Base & C Face Less Base thru 3 HP

HP	SYN RPM 60 Hz	NEMA Frame	Catalog Number	Stock	List Price	Model Number	App. Wgt. (lbs)	Voltage	F. L. Amps @ 230 V	% F.L. Eff.	Service Factor	"C" Dim. (Inches)	♥Notes
7 1/2	3600	184JP	G131885.00	✓	1,092	C184T34DK19	80	208-230/460	17.6	87.5	1.15	20.41	S, MX, 45
	3600	184JP	199773.00	✓	1,309	C184T34DK28	149	208-230/460	17.2	88.5	1.15	16.34	S, CN
	1800	213JP	G140667.00	✓	1,491	C213T17DK14	146	208-230/460	19.2	88.5	1.15	23.03	S, MX, 41
10	1800	213JP	199783.00	✓	1,670	C213T17DK47	166	230/460	18.6	91.0	1.15	17.68	S, CN
	3600	213JP	G140655.00	✓	1,404	C213T34DK2	140	208-230/460	23.4	88.5	1.15	23.03	S, MX, 37
	3600	213JP	199784.00	✓	1,572	C213T34DK49	156	208-230/460	23.0	89.5	1.15	17.68	S, CN
15	1800	215JP	G140668.00	✓	1,704	C215T17DK12	134	208-230/460	25.0	89.5	1.15	25.00	S, MX, 41
	1800	215JP	199785.00	✓	1,906	C215T17DK47		230/460	229.0	91.7	1.15	19.17	S, CN
	3600	215JP	G140656.00	✓	1,737	C215T34DK2	147	208-230/460	34.0	89.5	1.15	34.00	S, MX, 37
20	3600	215JP	199786.00	✓	1,962	C215T34DK48	191	208-230/460	34.0	90.2	1.15	19.17	S, CN
	1800	254JP	G801051.00	✓	2,106	254TTDX14067	170	208-230/460	38.5	91.0	1.15	38.50	S, US
	1800	254JP	199987.00	✓	3,519	C254T17DK13	322	208-230/460	36.5	93.0	1.15	24.41	CN
25	3600	254JP	G801056.00	✓	2,189	254TTDX14305	175	208-230/460	46.0	90.2	1.15	25.29	S, US
	3600	254JP	199988.00	✓	3,040	C254T34DK10	312	208-230/460	46.0	91.0	1.15	24.41	CN
	1800	256JP	G801052.00	✓	2,545	256TTDX14054	222	208-230/460	52.0	91.0	1.15	27.04	S, US
30	1800	256JP	199989.00	✓	3,655	C256T17DK9	374	208-230/460	49.0	93.0	1.15	26.00	CN
	3600	256JP	G801057.00	✓	2,578	256TTDX14019	181	208-230/460	58.0	91.0	1.15	27.04	S, US
	3600	256JP	199990.00	✓	3,246	C256T34DK9	328	208-230/460	57.0	91.7	1.15	26.00	CN
40	1800	284JP	G801053.00	✓	3,422	284TTDP14048	332	230/460	61.0	91.7	1.15	27.18	C, US
	1800	284JP	199991.00	✓	4,235	C284T17DK7	441	208-230/460	62.0	93.6	1.15	26.58	C, CN
	3600	284JP	G801058.00	✓	3,434	284TTDP14012	336	230/460	73.0	91.0	1.15	27.18	C, US
50	3600	284JP	199992.00	✓	3,953	C284T34DK5	412	208-230/460	68.0	91.7	1.15	26.58	C, CN
	1800	286JP	G801054.00	✓	3,551	286TTDP14052	342	230/460	72.0	92.4	1.15	28.68	C, US
	1800	286JP	199993.00	✓	4,746	C286T17DK8	502	208-230/460	74.0	94.1	1.15	27.10	C, CN
60	3600	286JP	G801059.00	✓	3,786	286TTDP14012	385	230/460	94.0	91.7	1.15	28.68	C, US
	3600	286JP	199994.00	✓	4,284	C286T34DK5	470	208-230/460	60.0	92.4	1.15	27.10	C, CN
	1800	324JP	G801055.00	✓	3,821	324TTDP14052	487	230/460	97.0	93.0	1.15	29.12	C, US
75	1800	324JP	199995.00	✓	5,512	C324T17DK13	604	208-230/460	95.0	94.1	1.15	28.95	C, CN
	3600	324JP	G801060.00	✓	5,028	324TTDP14014	472	230/460	117.0	92.4	1.15	29.12	C, US
	3600	324JP	199996.00	✓	5,203	C324T34DK5	570	208-230/460	113.0	93.0	1.15	28.95	C, CN
100	1800	326JP	199997.00	✓	5,799	C326T17DK7	738	208-230/460	118.0	94.5	1.15	30.12	C, CN

Green items are Premium Efficient

♥ Note listing on inside back flap

Specifications are subject to change without notice

Drip-Cover Kits For JP Pump Motors – See ♥ Note listing

Frame	Catalog Number	List Price	Enclosure	♥Notes
56-145JP	175932.00	35	ODP or TEFC	39
182JP-184JP	175933.00	39	ODP	40
213JP-215JP	175305.00	113	ODP	37
213JP-215JP	175846.00	113	ODP	41
182JP-184JP	175614.00	80	ODP	45



View On-line Technical Information



Pump Motors

JM Pump Motors - Single Phase

General Specifications:

Designed for continuous duty service on close-coupled pumps using NEMA JM mounting provisions. All motors have a rigid mounting base and NEMA JM pump shaft.

Features:

- Cooling air exhausts at shaft end for maximum cooling
- Locked bearing shaft end
- Drip-cover kits available

Electrical Features:

- High efficiency copper windings
- UL and CSA recognized designs
- Single phase designs are capacitor start/induction run unless indicated otherwise
- Class F Insulation



Single Phase - Drip-Proof - C Face With Base

HP	SYN RPM 60 Hz	NEMA Frame	Catalog Number	Stock	List Price	Model Number	App. Wgt. (lbs)	Voltage	F. L. Amps @ 230 V	Service Factor	"C" Dim. (Inches)	♥Notes
1	1800	143JM	120996.00	√	851	C143C17DK1	42	115/208-230	6.4	1.15	13.91	S, US, 38
1 1/2	1800	145JM	120994.00	√	858	C145K17DK8	45	115/208-230	8.6	1.15	14.91	S, US, 38, 53
2	3600	145JM	121190.00	√	878	C145C34DK3	47	115/208-230	10.5	1.15	14.91	S, US, 38
	1800	145JM	120995.00	√	860	C145K17DK9	45	115/208-230	10.5	1.15	15.41	S, US, 38, 53
3	1800	182JM	132073.00	√	898	C182C17DK3	70	115/208-230	12.4	1.15	13.19	S, MX, 40
	3600	182JM	131640.00	√	1,039	C182K34DK1	80	115/208-230	15.2	1.15	16.32	S, MX, 45, 53
5	1800	182JM	131604.00	√	1,194	C182C17DK2	73	230	16.8	1.15	15.82	S, MX, 45
	3600	184JM	131641.00	√	1,477	C184K34DK3	95	115/208-230	24.0	1.15	17.32	S, MX, 40, 53
7 1/2	1800	184JM	131605.00	√	1,697	C184K17DK14	82	230	21.0	1.15	16.32	S, MX, 40, 53
	3600	213JM	140642.00	√	2,100	C213K34DK2	109	230	37.0	1.15	14.17	S, MX, 37, 53
10	1800	215JM	140665.00	√	2,237	C215K17DK1	141	230	40.5	1.15	18.38	S, MX, 37, 53
	3600	215JM	140644.00	√	2,365	C215K34DK2	135	230	47.0	1.15	18.38	S, MX, 37, 53
	1800	215JM	140666.00	√	2,768	C215K17DK2	144	230	43.0	1.15	19.88	S, MX, 37, 53

Specifications are subject to change without notice

♥ Note listing on inside back flap

View On-line Technical Information



Explosion Proof Motors

Automotive Duty Motors

Pump Motors

Washguard Motors

Agricultural Motors

HVAC / Fan Motors

Special Voltage Motors

Definite Purpose Motors

Brake Motors

Pump Motors

JM Pump Motors - Three Phase

Three Phase - Drip-Proof - C Face With Base & C Face Less Base thru 3 HP

HP	SYN RPM 60 Hz	NEMA Frame	Catalog Number	Stock	List Price	Model Number	App. Wgt. (lbs)	Voltage	F. L. Amps @ 230 V	% F.L. Eff.	Service Factor	"C" Dim. (Inches)	Notes
1	1800	143JM	G121850.00	√	591	C143T17DK3	44	208-230/460	3.1	82.5	1.15	14.62	S, US, 39
	1800	143JM	122115.00	√	697	C143T17DK8	41	208-230/460	3.2	85.5	1.15	14.62	S, US, 39
1 1/2	3600	143JM	122074.00	√	767	C143T34DK4	40	208-230/460	4.0	84.0	1.15	13.12	S, US, 39
	3600	143JMV	122075.00	√	767	C143T34DC6	44	208-230/460	5.6	86.5	1.15	14.62	S, US
2	1800	145JM	G121851.00	√	640	C145T17DK18	44	208-230/460	4.8	84.0	1.15	14.62	S, US, 39
	1800	143JM	122076.00	√	750	C143T17DK7	44	208-230/460	5.6	86.5	1.15	14.62	S, US, 39
	1800	143JMV	122077.00	√	750	C143T17DC18	44	208-230/460	4.8	86.5	1.15	14.62	S, US
	3600	145JM	G121853.00	√	739	C145T34DK13	44	208-230/460	5.4	84.0	1.15	13.42	S, US, 39
3	3600	145JM	122078.00	√	873	C143T34DK5	43	208-230/460	4.8	85.5	1.15	13.12	S, US, 39
	3600	145JMV	122079.00	√	873	C143T34DC7	43	208-230/460	4.8	85.5	1.15	13.12	S, US
	1800	145JM	G121852.00	√	664	C145T17DK19	48	208-230/460	5.8	84.0	1.15	15.12	S, US, 39
	1800	145JMV	122080.00	√	845	C143T17DC19	45	208-230/460	5.8	86.5	1.15	15.12	S, US
5	3600	145JM	G121854.00	√	820	C145T34DK14	45	208-230/460	8.4	84.0	1.15	13.62	S, US, 39
	3600	145JM	122081.00	√	966	C145T34DK17	47	208-230/460	7.2	86.5	1.15	13.62	S, US, 39
	3600	145JMV	122082.00	√	966	C145T34DC14	47	208-230/460	7.2	86.5	1.15	13.62	S, US
	1800	182JM	G131562.00	√	877	C182T17DK19	64	208-230/460	9.2	86.5	1.15	16.09	S, MX, 45
7 1/2	1800	182JM	199589.00	√	1,029	C182T17DK43	123	208-230/460	7.8	89.5	1.15	15.35	S, CN
	3600	182JM	G131574.00	√	1,079	C182T34DK12	66	208-230/460	12.0	85.5	1.15	16.35	S, MX, 45
	3600	182JM	199763.00	√	1,230	C182T34DK20	131	208-230/460	11.8	86.5	1.15	15.35	S, CN
	1800	184JM	G131563.00	√	1,011	C184T17DK28	71	208-230/460	13.2	87.5	1.15	17.09	S, MX, 45
10	1800	184JM	199590.00	√	1,162	C184T17DK43	135	208-230/460	12.4	89.5	1.15	16.34	S, CN
	3600	184JM	G131576.00	√	1,185	C184T34DK18	108	208-230/460	17.6	87.5	1.15	17.09	S, MX, 45
	3600	184JM	199765.00	√	1,327	C184T34DK27	149	208-230/460	17.2	88.5	1.15	16.34	S, CN
	1800	213JM	G140618.00	√	1,261	C213T17DK13	147	208-230/460	19.2	88.5	1.15	19.16	S, MX, 41
15	1800	213JM	199775.00	√	1,521	C213T17DK46	166	230/460	18.6	91.0	1.15	17.68	S, CN
	3600	213JM	G141121.00	√	1,401	C213T34DK5	130	208-230/460	23.4	88.5	1.15	19.16	S, MX, 37
	3600	213JM	199090.00	√	1,700	C213T34DK48	156	208-230/460	23.0	89.5	1.15	17.68	S, CN
	1800	215JM	G140619.00	√	1,442	C215T17DK11	135	208-230/460	25.0	89.5	1.15	19.16	S, MX, 41
20	1800	215JM	199777.00	√	1,717	C215T17DK46	229	230/460	24.4	91.7	1.15	19.17	S, CN
	3600	215JM	G151380.60	√	2,009	C215T34DK9	175	208-230/460	34.0	89.5	1.15	20.41	C, CN, 43
	3600	215JM	199091.00	√	2,249	C215T34DK47	191	208-230/460	34.0	90.2	1.15	19.17	S, CN
	1800	254JM	G151361.60	√	2,167	C254T17DK7	268	208-230/460	38.5	91.0	1.15	25.45	C, CN, 44
25	1800	254JM	199964.00	√	2,470	C254T17DK12	322	208-230/460	38.0	93.0	1.15	24.41	C, CN
	3600	254JM	G151381.60	√	2,184	C254T34DK5	261	208-230/460	46.0	90.2	1.15	22.42	C, CN, 44
	3600	254JM	199965.00	√	3,040	C254T34DK9	312	208-230/460	46.0	91.0	1.15	24.41	C, CN
	1800	256JM	G151362.60	√	2,282	C256T17DK5	310	208-230/460	52.0	91.0	1.15	24.17	C, CN, 44
30	1800	256JM	199966.00	√	3,661	C256T17DK8	374	208-230/460	46.0	91.0	1.15	24.41	C, CN
	3600	256JM	G151382.60	√	2,732	C256T34DK5	295	208-230/460	58.0	91.0	1.15	24.17	C, CN, 44
	3600	256JM	199967.00	√	3,692	C256T34DK8	328	208-230/460	57.0	91.7	1.15	26.00	C, CN
	1800	284JM	G801028.00	√	3,386	284TDP14049	391	230/460	66.0	91.7	1.15	24.31	C, US
1800	284JM	199968.00	√	4,234	C284T17DK6	441	208-230/460	62.0	93.6	1.15	26.58	C, CN	

Shaded items are less base and have drip covers

Green items are Premium Efficient

Specifications are subject to change without notice

♥ Note listing on inside back flap

Continued On Next Page



View On-line Technical Information



Pump Motors

JM Pump Motors - Three Phase

Three Phase - Drip-Proof -C Face With Base & C Face Less Base thru 3 HP

HP	SYN RPM 60 Hz	NEMA Frame	Catalog Number	Stock	List Price	Model Number	App. Wgt. (lbs)	Voltage	F. L. Amps @ 230 V	% F.L. Eff.	Service Factor	"C" Dim. (Inches)	♥Notes
30	3600	284JM	G801040.00	√	3,425	284TTDP14013	376	230/460	73.0	91.0	1.15	24.31	C, US
	3600	284JM	199969.00	√	4,280	C284T34DK4	412	208-230/460	68.0	91.7	1.15	26.58	C, CN
	1800	286JM	G801029.00	√	3,551	286TTDP14053	437	230/460	72.0	92.4	1.15	25.81	C, US
	1800	286JM	199970.00	√	4,745	C286T17DK7	502	208-230/460	74.0	94.1	1.15	27.10	C, CN
40	3600	286JM	G801041.00	√	3,931	286TTDP14011	429	230/460	94.0	91.7	1.15	25.81	C, US
	3600	286JM	199971.00	√	4,807	C286T34DK4	470	208-230/460	90.0	92.4	1.15	27.10	C, CN
	1800	324JM	G801030.00	√	4,639	324TTDP14055	531	230/460	97.0	93.0	1.15	26.25	C, US
	1800	324JM	199972.00	√	5,512	C324T17DK12	604	208-230/460	95.0	94.1	1.15	28.95	C, CN
50	3600	324JM	G801042.00	√	5,343	324TTDP14013	514	230/460	117.0	92.4	1.15	26.25	C, US
	3600	324JM	199973.00	√	5,771	C324T34DK4	570	208-230/460	113.0	93.0	1.15	28.95	C, CN
	1800	326JM	199974.00	√	5,878	C326T17DK6	738	208-230/460	118.0	94.5	1.15	30.12	C, CN

Green items are Premium Efficient
Specifications are subject to change without notice

♥ Note listing on inside back flap

Drip-Cover Kits For JM Pump Motors – See ♥ Note listing

Frame	Catalog Number	List Price	Enclosure	♥Notes
143-145JM	175004.00	64	ODP	38
143-145JM	175932.00	35	ODP	39
182-184JM	175933.00	39	ODP	40
213-215JM	175305.00	113	ODP	37
213-215JM	175846.00	113	ODP	41
213-215JM ‡	175962.00	113	ODP	43
254-256JM ‡	175963.00	144	ODP	44
182-184JM	175614.00	80	ODP	45

‡ For use with Cast Iron Motors

View On-line Technical Information



Explosion Proof Motors

Automotive Duty Motors

Pump Motors

Washguard Motors

Agricultural Motors

HVAC / Fan Motors

Special Voltage Motors

Definite Purpose Motors

Brake Motors

Pump Motors

JM Pump Motors - TEFC - Three Phase

General Specifications:

Designed for continuous duty service on close-coupled pumps using NEMA JM mounting provisions. All motors have a rigid mounting base and NEMA JM pump shaft and face mount.

Features:

- Totally enclosed fan cooled construction for maximum life in dirty or severe environments. Oversized locked bearing on shaft end limits axial shaft movement. Drip covers are available as accessory kits for 143-5JM and 182-4JM motors—see letter designations in the table for the correct kit. Some 182-4JM frame motors have enclosed endshields as standard with frame vents meeting the 12° drip-proof requirement. No drip cover is needed, or shown in the table, for these motors
- Oversized locked bearing on shaft end limits axial shaft movement
- Drip cover kits available
- High efficiency copper windings
- UL and CSA recognized designs



Three Phase - TEFC - C Face With Base & C Face Less Base thru 2 HP

HP	SYN RPM 60 Hz	NEMA Frame	Catalog Number	Stock	List Price	Model Number	App. Wgt. (lbs)	Voltage	F. L. Amps @ 230 V	% F.L. Eff.	Service Factor	"C" Dim. (Inches)	Notes
1	1800	143JM	G121855.00	✓	657	C143T17FK19	35	208-230/460	3.0	82.5	1.15	15.00	S, MX
	1800	143JM	122083.00	✓	775	C143T17FK27	59	208-230/460	3.3	85.5	1.15	16.79	S, US
	1800	143JMV	122084.00	✓	775	C143T17FC39	57	208-230/460	3.3	85.5	1.15	16.00	S, US
1 1/2	3600	143JM	G121858.00	✓	662	C143T34FK14	37	208-230/460	4.0	82.5	1.15	15.50	S, US
	3600	143JM	122085.00	✓	799	C143T34FK17	63	208-230/460	4.0	84.0	1.15	15.50	S, US
	3600	143JMV	122086.00	✓	799	C143T34FC20	61	208-230/460	4.0	84.0	1.15	16.29	S, US
	1800	145JM	G121856.00	✓	718	C145T17FK53	46	208-230/460	4.4	84.0	1.15	16.50	S, US
	1800	145JM	122087.00	✓	846	C145T17FK71	68	208-230/460	4.6	86.5	1.15	16.50	S, US
	1800	145JMV	122088.00	✓	846	C145T17FC121	66	208-230/460	4.6	86.5	1.15	17.29	S, US
2	3600	145JM	G121859.00	✓	813	C145T34FK37	38	208-230/460	5.2	84.0	1.15	15.50	S, US
	3600	145JM	122089.00	✓	959	C145T34FK45	71	208-230/460	5.2	85.5	1.15	16.50	S, US
	3600	145JMV	122090.00	✓	959	C145T34FC42	69	208-230/460	5.2	85.5	1.15	17.29	S, US
	1800	145JM	G121857.00	✓	714	C145T17FK54	50	208-230/460	5.6	84.0	1.15	16.00	S, US
	1800	145JM	122091.00	✓	845	C145T17FK72	76	208-230/460	6.0	86.5	1.15	17.00	S, US
	1800	145JMV	122092.00	✓	845	C145T17FC122	74	208-230/460	6.0	86.5	1.15	17.79	S, US
3	3600	145JM	G121860.00	✓	862	C145T34FK38	49	208-230/460	7.4	85.5	1.15	17.35	S, US
	3600	182JM	199766.00	✓	990	C182T34FK43	83	208-230/460	7.6	86.5	1.15	17.51	S, CN
	1800	182JM	G131579.00	✓	874	C182T17FK26	75	230/460	8.4	87.5	1.15	17.85	S, MX
	1800	128JM	199767.00	✓	1,014	C182T17FK48	87	208-230/460	7.8	89.5	1.15	17.51	S, CN
5	3600	184JM	G131580.00	✓	1,170	C184T34FK39	82	208-230/460	12.4	87.5	1.15	18.35	S, MX
	3600	184JM	199768.00	✓	1,380	C184T34FK49	95	208-230/460	12.00	88.5	1.15	18.36	S, CN
	1800	184JM	G131581.00	✓	1,138	C184T17FK33	97	230/460	12.60	87.5	1.15	18.85	S, MX
1800	184JM	199769.00	✓	1,342	C184T17FK49	110	208-230/460	12.40	89.5	1.15	18.36	S, CN	

Shaded items are less base and have drip covers

Green items are Premium Efficient

Specifications are subject to change without notice

♥ Note listing on inside back flap

Continued On Next Page



View On-line Technical Information



Pump Motors

JM Pump Motors - TEFC - Three Phase

Three Phase - TEFC - C Face With Base

HP	SYN RPM 60 Hz	NEMA Frame	Catalog Number	Stock	List Price	Model Number	App. Wgt. (lbs)	Voltage	F. L. Amps @ 230 V	% F.L. Eff.	Service Factor	"C" Dim. (Inches)	♥Notes
7 1/2	3600	184JM	G131582.00	✓	1,297	C184T34FK40	104	208-230/460	18.4	88.5	1.00	22.09	S, MX
	3600	213JM	199779.00	✓	1,601	C213T34FK45	95	208-230/460	12.0	88.5	1.15	18.36	S, CN
	3600	S213JM	G132027.00	✓	1,432	C184T34FK41	121	208-230/460	18.4	88.5	1.15	22.09	S, MX
	1800	213JM	G140622.00	✓	1,512	C213T17FK23	127	208-230/460	20.0	89.5	1.15	20.59	S, MX
	1800	213JM	199780.00	✓	1,784	C213T17FK46	110	208-230/460	12.4	89.5	1.15	18.36	S, CN
10	3600	213JM	G141122.00	✓	1,732	C213T34FK2	130	208-230/460	24.0	89.5	1.15	22.09	S, MX
	3600	215JM	199781.00	✓	2,043	C215T34FK46	137	208-230/460	22.8	90.2	1.15	22.14	S, CN
	1800	215JM	G140623.00	✓	1,864	C215T17FK18	145	208-230/460	25.6	90.2	1.15	22.09	S, MX
	1800	215JM	199782.00	✓	2,199	C215T17FK46	164	230/460	24.4	91.7	1.15	22.14	S, CN
15	3600	215JM	G140764.00	✓	2,077	C215T34FK10	139	208-230/460	35.0	90.2	1.15	24.74	S, MX
	3600	254JM	G151567.60	✓	2,423	C254T34FK11	171	208-230/460	35.0	90.2	1.15	24.80	C, CN
	3600	254JM	199975.00	✓	3,137	C254T34FK15	350	208-230/460	34.0	91.0	1.15	26.60	C, CN
	1800	254JM	G151568.60	✓	2,357	A254T17FK12	287	208-230/460	37.0	91.0	1.15	24.80	C, CN
	1800	254JM	199976.00	✓	3,175	C254T17FK16	375	208-230/460	37.0	92.4	1.15	26.60	C, CN
20	3600	254JM	G151569.60	✓	2,643	C254T34FK12	299	208-230/460	46.2	90.2	1.15	24.80	C, CN
	3600	256JM	199977.00	✓	3,413	C256T34FK11	375	208-230/460	46.0	91.0	1.15	27.80	C, CN
	1800	256JM	G151570.60	✓	2,859	C256T17FK5	324	208-230/460	48.2	91.0	1.15	26.50	C, CN
	1800	256JM	199978.00	✓	3,987	C256T17FK16	425	208-230/460	48.0	93.0	1.15	27.80	C, CN
25	3600	256JM	G151417.60	✓	3,273	C256T34FK8	311	208-230/460	56.4	91.0	1.15	28.00	C, CN
	3600	284JM	199979.00	✓	4,065	C284T34FK12	475	208-230/460	55.5	91.7	1.15	30.92	C, CN
	1800	284JM	G151418.60	✓	3,219	C284T17FK6	373	208-230/460	58.8	92.4	1.15	28.17	C, CN
30	1800	284JM	199980.00	✓	4,504	C284T17FK14	500	208-230/460	62.0	93.6	1.15	30.92	C, CN
	3600	284JM	G151420.60	✓	3,883	C284T34FK12	378	208-230/460	69.2	91.0	1.15	28.17	C, CN
	3600	286JM	199981.00	✓	4,302	C286T34FK19	500	208-230/460	66.0	91.7	1.15	32.10	C, CN
40	1800	286JM	G151422.60	✓	3,820	C286T17FK11	431	208-230/460	69.8	92.4	1.15	29.74	C, CN
	1800	286JM	199982.00	✓	4,714	C286T17FK14	525	208-230/460	73.0	93.6	1.15	32.10	C, CN
	3600	286JM	G151424.60	✓	4,839	C286T34FK16	499	208-230/460	93.0	91.7	1.15	29.74	C, CN
50	3600	324JM	199983.00	✓	5,574	C324T34FK11	675	208-230/460	88.0	92.4	1.15	32.93	C, CN
	1800	324JM	G151426.60	✓	4,687	C324T17FK12	531	208-230/460	90.0	93.0	1.15	32.33	C, CN
50	3600	326JM	199985.00	✓	5,918	C326T34FK8	725	208-230/460	109.0	93.0	1.15	34.11	C, CN
	1800	326JM	199986.00	✓	6,695	C326T17FK11	775	208-230/460	119.0	94.5	1.15	34.11	C, CN

Green items are Premium Efficient
Specifications are subject to change without notice

♥ Note listing on inside back flap

View On-line Technical Information



Explosion Proof Motors

Automotive Duty Motors

Pump Motors

Washguard Motors

Agricultural Motors

HVAC / Fan Motors

Special Voltage Motors

Definite Purpose Motors

Brake Motors

Pump Motors

JP Pump Motors - TEFC - Three Phase

General Specifications:

For use with close-coupled pumps having NEMA JP mounting and shaft dimensions. Used in applications where the pump impeller is mounted directly on the motor shaft. Designed for continuous duty service.

Features:

- 1.25 Service Factor
- All cast iron construction
- EPAAct efficient
- Re-greasable bearings
- UL recognized and CSA certified
- Class F Insulation



TEFC JP Pump Motors - C Face With Base & C Face Less Base thru 2 HP

HP	SYN RPM 60 Hz	NEMA Frame	Catalog Number	Stock	List Price	Model Number	App. Wgt. (lbs)	Voltage	F. L. Amps @ 230 V	% F.L. Eff.	Service Factor	"C" Dim. (Inches)	♥Notes
1	1800	143JP	122105.00	√	784	C143T17FK28	59	208-230/460	3.3	85.5	1.15	19.13	S, US
	1800	143JPV	122106.00	√	784	C143T17FC40	57	208-230/460	3.3	85.5	1.15	19.85	S, US
1 1/2	3600	143JP	122107.00	√	809	C143T34FK18	63	208-230/460	4.0	84	1.15	18.63	S, US
	3600	143JPV	122108.00	√	809	C143T34FC21	61	208-230/460	4.0	84	1.15	19.35	S, US
2	1800	145JP	G151736.60	√	607	C145T17FK60	54	208-230/460	4.5	85.5	1.15	18.66	C, CN
	1800	145JP	122109.00	√	860	C145T17FK73	68	208-230/460	4.6	86.5	1.15	19.63	S, US
	1800	145JPV	122110.00	√	860	C145T17FC123	66	208-230/460	4.6	86.5	1.15	20.35	S, US
	3600	145JP	122111.00	√	974	C145T34FK46	71	208-230/460	5.2	85.5	1.15	19.63	S, US
2	3600	145JPV	122112.00	√	974	C145T34FC43	69	208-230/460	5.2	85.5	1.15	20.35	S, US
	1800	145JP	G151737.60	√	626	C145T17FK61	57	208-230/460	5.8	85.5	1.15	18.66	C, CN
	1800	145JP	122113.00	√	868	C145T17FK74	76	208-230/460	6.0	86.5	1.15	20.13	S, US
	1800	145JP	122114.00	√	868	C145T17FC124	74	208-230/460	6.0	86.5	1.15	20.85	S, US
3	3600	182JP	G151738.60	√	1,138	C182T34FK12	91	208-230/460	7.4	85.5	1.15	20.71	C, CN
	3600	182JP	199092.00	√	1,308	C182T34FK42	83	208-230/460	7.6	86.5	1.15	19.07	S, CN
	1800	182JP	G151739.60	√	1,043	C182T17FK24	95	208-230/460	8.5	87.5	1.15	20.71	C, CN
	1800	182JP	199093.00	√	1,210	C182T17FK47	87	208-230/460	7.8	89.5	1.15	19.07	S, CN
5	3600	184JP	G151740.60	√	1,168	C184T34FK35	103	208-230/460	12.0	87.5	1.15	20.71	C, CN
	3600	184JP	199094.00	√	1,377	C184T34FK48	95	208-230/460	12.0	88.5	1.15	20.05	S, CN
	1800	184JP	G151741.60	√	1,153	C184T17FK31	103	208-230/460	13.8	87.5	1.15	20.71	C, CN
	1800	184JP	199095.00	√	1,383	C184T17FK48	110	208-230/460	12.4	89.5	1.15	20.05	S, CN

Shaded items are less base and have drip covers

Green items are Premium Efficient

Specifications are subject to change without notice

♥ Note listing on inside back flap

Continued On Next Page



View On-line Technical Information



Pump Motors

JP Pump Motors - TEFC - Three Phase

TEFC JP Pump Motors - C Face With Base

HP	SYN RPM 60 Hz	NEMA Frame	Catalog Number	Stock	List Price	Model Number	App. Wgt. (lbs)	Voltage	F. L. Amps @ 230 V	% F.L. Eff.	Service Factor	"C" Dim. (Inches)	♥ Notes
7 1/2	3600	184JP	G151742.60	√	1,404	C184T34FK38	156	208-230/460	17.8	88.5	1.15	20.71	C, CN
	3600	213JP	199096.00	√	1,684	C213T34FK44	116	208-230/460	12.0	88.5	1.15	24.54	S, CN
	1800	213JP	G151743.60	√	1,320	C213T17FK17	158	208-230/460	19.2	89.5	1.15	24.02	C, CN
	1800	213JP	199787.00	√	1,755	C213T17FK47	143	208-230/460	12.4	89.5	1.15	24.54	S, CN
10	3600	213JP	G151744.60	√	1,637	C213T34FK4	166	208-230/460	23.6	89.5	1.15	24.02	C, CN
	3600	215JP	199788.00	√	1,931	C215T34FK47	137	208-230/460	22.8	90.2	1.15	26.03	S, CN
	1800	215JP	G151745.60	√	1,592	C215T17FK13	179	208-230/460	25.2	89.5	1.15	25.74	C, CN
	1800	215JP	199789.00	√	1,901	C215T17FK47	164	230/460	24.4	91.7	1.15	26.03	S, CN
15	3600	215JP	G151746.60	√	2,293	C215T34FK14	249	208-230/460	35.0	90.2	1.15	25.74	C, CN
	3600	254JP	199998.00	√	3,137	C254T34FK15	350	208-230/460	34.0	91.0	1.15	29.51	C, CN
	1800	254JP	G151747.60	√	2,434	C254T17FK10	281	208-230/460	37.0	92.4	1.15	28.03	C, CN
	1800	254JP	199999.00	√	3,175	C254T17FK17	375	208-230/460	37.0	92.4	1.15	29.51	C, CN
20	3600	254JP	G151748.60	√	3,038	C254T34FK10	260	208-230/460	46.2	90.2	1.15	28.03	C, CN
	3600	256JP	194118.00	√	3,584	C256T17FK17	375	208-230/460	45.0	91.0	1.15	30.71	C, CN
	1800	256JP	G151749.60	√	2,878	C256T34FK12	324	208-230/460	48.2	91.0	1.15	29.76	C, CN
	1800	256JP	194119.00	√	3,987	C256T17FK17	425	208-230/460	48.5	93.0	1.15	30.71	C, CN
25	3600	256JP	G151750.60	√	3,624	C256T34FK7	366	208-230/460	58.2	91.0	1.15	29.76	C, CN
	3600	284JP	194120.00	√	4,065	C284T34FK13	475	208-230/460	55.5	91.7	1.15	33.82	C, CN
	1800	284JP	G151751.60	√	3,639	C284T17FK8	391	208-230/460	58.8	92.4	1.15	30.04	C, CN
	1800	284JP	194121.00	√	4,503	C284T17FK15	500	208-230/460	62.0	93.6	1.15	33.82	C, CN
30	3600	284JP	G151752.60	√	3,946	C286T34FK7	380	208-230/460	69.2	91.0	1.15	30.04	C, CN
	3600	286JP	194122.00	√	4,656	C286T34FK20	500	208-230/460	66.0	91.7	1.15	35.00	C, CN
	1800	286JP	G151753.60	√	3,822	C286T17FK7	438	208-230/460	69.8	92.4	1.15	31.61	C, CN
	1800	286JP	194123.00	√	4,714	C286T17FK15	525	208-230/460	73.0	93.6	1.15	35.00	C, CN
40	3600	286JP	G151754.60	√	4,991	C324T34FK9	580	208-230/460	93.0	91.7	1.15	31.61	C, CN
	3600	324JP	194124.00	√	5,889	C324T34FK12	675	208-230/460	88.0	92.4	1.15	35.81	C, CN
	1800	324JP	G151755.60	√	4,757	C324T17FK8	583	208-230/460	90.0	93.0	1.15	32.80	C, CN
	1800	324JP	194125.00	√	5,978	C324T17FK16	750	208-230/460	94.0	94.1	1.15	35.81	C, CN
50	3600	324JP	G151756.60	√	6,140	C326T34FK7	610	208-230/460	112.0	92.4	1.15	34.17	C, CN
	3600	326JP	194126.00	√	6,877	C326T34FK9	725	208-230/460	109.0	93.0	1.15	36.99	C, CN
	1800	326JP	194127.00	√	6,912	C326T17FK12	775	208-230/460	119.0	94.5	1.15	36.99	C, CN

Green items are Premium Efficient
Specifications are subject to change without notice

♥ Note listing on inside back flap

View On-line Technical Information



Explosion Proof Motors

Automotive Duty Motors

Pump Motors

Washguard Motors

Agricultural Motors

HVAC / Fan Motors

Special Voltage Motors

Definite Purpose Motors

Brake Motors

Pump Motors

Lincoln Fire Pump Motors - Drip-Proof - Rigid Base



Features:

- 25 to 500 horsepower
- 3600 & 1800 RPM's
- 250 frame rolled steel construction
- 280 frame and larger - cast iron construction
- EPA efficiency
- Ball bearings
- NEMA design B, code G
- 230/460 and 460 volt motors rated for 50HZ at next lower HP, with 1.15 S.F. on nameplate
- Dual voltage motors – 12 leads suitable for Y-Delta, low voltage PWS, and across the line start
- Single voltage motors – 12 leads suitable for Y-Delta, PWS, and across the line start
- C Face kits available through 250HP
- For special designs contact district sales office near you
- Exterior red paint
- UL listed and CSA certified (UL1004A) and CE marked

Three Phase - Drip-Proof - Rigid Base

HP	SYN RPM 60 Hz	NEMA Frame	▼ Catalog Number	Stock	List Price	Model Number	App. Wgt. (lbs)	Voltage	* F. L. Amps	% F.L. Eff.	Service Factor	"C" Dim. (Inches)	♥Notes
25	3600	256T	LM80103	C/A	1,817	SSD2P25T62AP5	164	200/400	---	91.0	1.15	---	S, US
	3600	256T	LM80104	C/A	1,817	SSD2P25T61AP5	164	230/460	58.0	91.0	1.15	22.32	S, US
	1800	284T	LM80105	C/A	2,551	CCD4P25T62YAP5	420	200/400	70.0	91.7	1.15	23.49	C, US
	1800	284T	LM80106	C/A	2,551	CCD4P25T61YAP5	420	230/460	61.0	91.7	1.15	23.49	C, US
30	3600	284TS	LM80107	C/A	2,733	CCD2P30TS62YAP5	318	200/400	83.0	91.0	1.15	22.06	C, US
	3600	284TS	LM80108	C/A	2,733	CCD2P30TS61YAP5	318	230/460	72.0	91.0	1.15	22.06	C, US
	1800	286T	LM80109	C/A	3,007	CCD4P30T62YAP5	364	200/400	83.0	92.4	1.15	23.56	C, US
	1800	286T	LM80110	C/A	3,007	CCD4P30T61YAP5	364	230/460	72.0	92.4	1.15	23.49	C, US
40	3600	286TS	LM80111	C/A	3,049	CCD2P40TS62YAP5	360	200/400	123.0	91.7	1.15	23.64	C, US
	3600	286TS	LM80112	✓	3,049	CCD2P40TS61YAP5	360	230/460	107.0	91.7	1.15	23.56	C, US
	1800	324TS	LM80113	C/A	3,383	CCD4P40TS62YAP5	465	200/400	127.0	93.0	1.15	24.50	C, US
	1800	324TS	LM80114	C/A	3,383	CCD4P40TS61YAP5	465	230/460	97.0	93.0	1.15	24.50	C, US
	1800	324T	LM80115	C/A	3,383	CCD4P40T62YAP5	465	200/400	112.0	93.0	1.15	26.00	C, US
	1800	324T	LM80116	✓	3,383	CCD4P40T61YAP5	465	230/460	97.0	93.0	1.15	26.00	C, US
50	3600	324TS	LM80117	C/A	3,226	CCD2P50TS62YAP5	415	200/400	135.0	92.4	1.15	24.50	C, US
	3600	324TS	LM80118	✓	3,226	CCD2P50TS61YAP5	415	230/460	117.0	92.4	1.15	24.50	C, US
	1800	326TS	LM80119	C/A	3,604	CCD4P50TS62YAP5	515	200/400	142.0	93.0	1.15	26.00	C, US
	1800	326TS	LM80120	C/A	3,604	CCD4P50TS61YAP5	515	230/460	123.0	93.0	1.15	26.00	C, US
	1800	326T	LM80121	C/A	3,604	CCD4P50T62YAP5	515	200/400	161.0	93.0	1.15	26.00	C, US
	1800	326T	LM80122	✓	3,604	CCD4P50T61YAP5	515	230/460	123.0	93.0	1.15	27.50	C, US

▼ LM Numbers are Lincoln Models

♥ Note listing on inside back flap

* Full load Amps at lowest listed voltage

Continued On Next Page

C/A - Check Availability

Specifications are subject to change without notice



View On-line Technical Information



Lincoln Fire Pump Motors - Drip-Proof - Rigid Base

Three Phase - Drip-Proof - Rigid Base

HP	SYN RPM 60 Hz	NEMA Frame	▼ Catalog Number	Stock	List Price	Model Number	App. Wgt. (lbs)	Voltage	* F. L. Amps	% F.L. Eff.	Service Factor	"C" Dim. (Inches)	♥ Notes
60	3600	326TS	LM80123	C/A	3,595	CCD2P60TS62YAP5	340	200/400	155.0	93.0	1.15	26.00	C, US
	3600	326TS	LM80124	✓	3,595	CCD2P60TS61YAP5	340	230/460	135.0	93.0	1.15	26.00	C, US
	1800	364TS	LM80125	C/A	6,812	CCD4P60TS62YAP5	805	200/400	166.0	93.6	1.15	26.50	C, US
	1800	364TS	LM80126	C/A	6,818	CCD4P60TS61YAP5	805	230/460	144.0	93.6	1.15	26.50	C, US
	1800	364T	LM80127	C/A	6,818	CCD4P60T62YAP5	805	200/400	166.0	93.6	1.15	28.62	C, US
	1800	364T	LM80128	C/A	6,818	CCD4P60T61YAP5	805	230/460	144.0	93.6	1.15	28.62	C, US
75	3600	364TS	LM80129	C/A	6,660	CCD2P75TS62YAP5	950	200/400	211.0	93.0	1.15	26.50	C, US
	3600	364TS	LM80130	✓	7,079	CCD2P75TS61YAP5	950	230/460	183.0	93.0	1.15	26.50	C, US
	1800	365TS	LM80131	C/A	7,095	CCD4P75TS62YAP5	766	200/400	204.0	94.1	1.15	27.50	C, US
	1800	365TS	LM80132	C/A	7,095	CCD4P75TS61YAP5	766	230/460	177.0	94.1	1.15	27.50	C, US
	1800	365T	LM80133	C/A	7,095	CCD4P75T62YAP5	766	200/400	204.0	94.1	1.15	29.62	C, US
	1800	365T	LM80134	✓	7,095	CCD4P75T61YAP5	766	230/460	177.0	94.1	1.15	29.62	C, US
100	3600	365TS	LM80135	C/A	6,932	CCD2P100TS62YAP5	730	200/400	276.0	93.0	1.15	27.50	C, US
	3600	365TS	LM80136	✓	6,932	CCD2P100TS61YAP5	730	230/460	240.0	93.0	1.15	27.50	C, US
	1800	404TS	LM80137	C/A	8,723	CCD4P100TS62YAP5	1065	200/400	267.0	94.1	1.15	29.50	C, US
	1800	404TS	LM80138	C/A	8,723	CCD4P100TS61YAP5	1065	230/460	236.0	94.1	1.15	29.50	C, US
	1800	404T	LM80139	C/A	8,723	CCD4P100T62YAP5	1065	200/400	271.0	94.1	1.15	32.50	C, US
	1800	404T	LM80140	✓	8,723	CCD4P100T61YAP5	1065	230/460	236.0	94.1	1.15	32.50	C, US
125	3600	404TS	LM80141	C/A	8,260	CCD2P125TS62YAP5	949	200/400	327.0	93.6	1.15	29.50	C, US
	3600	404TS	LM80142	✓	8,260	CCD2P125TS61YAP5	949	230/460	284.0	93.6	1.15	29.50	C, US
	1800	405TS	LM80143	C/A	9,329	CCD4P125TS62YAP5	1070	200/400	327.0	94.5	1.15	29.50	C, US
	1800	405TS	LM80144	C/A	9,329	CCD4P125TS61YAP5	1070	230/460	288.0	94.5	1.15	31.00	C, US
	1800	405T	LM80145	C/A	9,329	CCD4P125T62YAP5	1070	200/400	331.0	94.5	1.15	34.00	C, US
	1800	405T	LM80146	✓	9,329	CCD4P125T61YAP5	1070	230/460	288.0	94.5	1.15	34.00	C, US
150	3600	405TS	LM80147	C/A	8,515	CCD2P150TS6011PYAP5	983	400	194.0	93.6	1.15	31.00	C, US
	3600	405TS	LM80148	✓	8,515	CCD2P150TS64PYAP5	983	460	169.0	93.6	1.15	31.00	C, US
	1800	444TS	LM80149	C/A	10,906	CCD4P150TS6011PYAP5	1265	400	199.0	95.0	1.15	34.00	C, US
	1800	444TS	LM80150	C/A	10,906	CCD4P150TS64PYAP5	1265	460	173.0	95.0	1.15	34.00	C, US
	1800	444T	LM80151	C/A	10,906	CCD4P150T6011PYAP5	1265	400	199.0	95.0	1.15	37.75	C, US
	1800	444T	LM80152	✓	10,906	CCD4P150T64PYAP5	1265	460	173.0	95.0	1.15	37.75	C, US
200	3600	444TS	LM80153	C/A	11,021	CCD2P200TS6011PYAP5	1315	400	259.0	94.5	1.15	34.00	C, US
	3600	444TS	LM80154	✓	11,021	CCD2P200TS64PYAP5	1315	460	225.0	94.5	1.15	34.00	C, US
	1800	445TS	LM80155	C/A	11,716	CCD4P200TS6011PYAP5	1412	400	268.0	95.0	1.15	36.00	C, US
	1800	445TS	LM80156	C/A	11,716	CCD4P200TS64PYAP5	1412	460	233.0	95.0	1.15	36.00	C, US
	1800	445T	LM80157	C/A	11,716	CCD4P200T6011PYAP5	1412	400	268.0	95.0	1.15	39.75	C, US
	1800	445T	LM80158	✓	11,716	CCD4P200T64PYAP5	1412	460	233.0	95.0	1.15	39.75	C, US
250	3600	445TS	LM80159	C/A	11,776	CCD2P250TS6011PYAP5	1387	400	321.0	94.5	1.15	36.00	C, US
	3600	445TS	LM80160	✓	11,776	CCD2P250TS64PYAP5	1387	460	279.0	94.5	1.15	36.00	C, US
	1800	445TS	LM80161	C/A	12,901	CCD4P250TS6011PYAP5	1428	400	328.0	95.4	1.15	36.00	C, US
	1800	445TS	LM80162	C/A	12,901	CCD4P250TS64PYAP5	1428	460	285.0	95.4	1.15	36.00	C, US
	1800	445T	LM80163	C/A	12,901	CCD4P250T6011PYAP5	1428	400	328.0	95.4	1.15	39.75	C, US
	1800	445T	LM80164	✓	12,901	CCD4P250T64PYAP5	1428	460	285.0	95.4	1.15	39.75	C, US

▼ LM Numbers are Lincoln Models

♥ Note listing on inside back flap

* Full load Amps at lowest listed voltage

Continued On Next Page

C/A - Check Availability

Specifications are subject to change without notice

View On-line Technical Information



Explosion Proof Motors

Automotive Duty Motors

Pump Motors

Washguard Motors

Agricultural Motors

HVAC / Fan Motors

Special Voltage Motors

Definite Purpose Motors

Brake Motors

Pump Motors

Lincoln Fire Pump Motors - Drip-Proof - Rigid Base

Three Phase - Drip-Proof - Rigid Base

HP	SYN RPM 60 Hz	NEMA Frame	▼ Catalog Number	Stock	List Price	Model Number	App. Wgt. (lbs)	Voltage	* F. L. Amps	% F.L. Eff.	Service Factor	"C" Dim. (Inches)	♥ Notes
300	3600	447TS	LM80165	C/A	15,803	CCD2P300TS6011PYAP5	2255	400	382.0	95.0	1.15	39.50	C, US
	3600	447TS	LM80166	✓	15,803	CCD2P300TS64PYAP5	2255	460	332.0	95.0	1.15	39.50	C, US
	1800	447TS	LM80167	C/A	16,606	CCD4P300TS6011PYAP5	1952	400	397.0	95.4	1.15	39.50	C, US
	1800	447TS	LM80168	C/A	16,606	CCD4P300TS64PYAP5	1952	460	345.0	95.4	1.15	39.50	C, US
	1800	447T	LM80169	C/A	16,606	CCD4P300T6011PYAP5	1952	400	397.0	95.4	1.15	43.25	C, US
	1800	447T	LM80170	✓	16,606	CCD4P300T64PYAP5	1952	460	345.0	95.4	1.15	43.25	C, US
350	3600	447TS	LM80171	C/A	16,464	CCD2P350TS6011PYAP5	2068	400	443.0	95.0	1.15	39.50	C, US
	3600	447TS	LM80172	✓	16,464	CCD2P350TS64PYAP5	2068	460	385.0	95.0	1.15	39.50	C, US
	1800	447TS	LM80173	C/A	16,567	CCD4P350TS6011PYAP5	1950	400	466.0	95.4	1.15	39.50	C, US
	1800	447TS	LM80174	C/A	16,567	CCD4P350TS64PYAP5	1950	460	405.0	95.4	1.15	39.50	C, US
	1800	447T	LM80175	C/A	16,567	CCD4P350T6011PYAP5	1950	400	466.0	95.4	1.15	43.25	C, US
	1800	447T	LM80176	✓	16,567	CCD4P350T64PYAP5	1950	460	405.0	95.4	1.15	43.25	C, US
400	1800	447TS	LM80178	✓	18,538	CCD4P400TS64PYAP5	2214	460	450.0	95.4	1.15	39.50	C, US
450	1800	449TS	LM80180	✓	24,596	CCD4P450TS64PYAP5	2675	460	505.0	95.8	1.15	44.50	C, US
500	1800	449TS	LM80182	✓	26,850	CCD4P500TS64PYAP5	2695	460	560.0	95.8	1.15	44.50	C, US

▼ LM Numbers are Lincoln Models

♥ Note listing on inside back flap

* Full Load Amps at 400 or 460 Volts

C/A - Check Availability

Specifications are subject to change without notice



View On-line Technical Information





Features:

- 3 to 450 horsepower
- 3600 & 1800 RPM's
- EPAct efficiency
- Ball bearings
- NEMA design B, code G
- 230/460 and 460 volt motors rated for 50HZ at next lower HP, with 1.15 S.F. on nameplate
- Dual voltage motors – 12 leads suitable for Y-Delta, low voltage PWS, and across the line start
- Single voltage motors – 12 leads suitable for Y-Delta, PWS, and across the line start
- C-Face kits available through 250HP
- For special designs contact district sales office near you
- Exterior red paint
- UL listed and CSA certified (UL1004A) and CE marked

Three Phase - TEFC - Rigid Base

HP	SYN RPM 60 Hz	NEMA Frame	▼ Catalog Number	Stock	List Price	Model Number	App. Wgt. (lbs)	Voltage	* F. L. Amps	% F.L. Eff.	Service Factor	"C" Dim. (Inches)	♥Notes
3	3600	182T	LM80050	C/A	957	CCF2P3T62AP5	84	200/400	8.5	86.5	1.15	15.87	C, US
	3600	182T	LM80051	C/A	957	CCF2P3T61AP5	84	230/460	7.4	86.5	1.15	15.87	C, US
	1800	182T	LM80052	C/A	1,039	CCF4P3T62AP5	90	200/400	9.9	87.5	1.15	15.87	C, US
	1800	182T	LM80053	C/A	1,039	CCF4P3T61AP5	90	230/460	8.6	87.5	1.15	15.87	C, US
5	3600	184T	LM80054	C/A	1,102	CCF2P5T62AP5	108	200/400	14.0	87.5	1.15	15.87	C, US
	3600	184T	LM80055	C/A	1,102	CCF2P5T61AP5	108	230/460	12.2	87.5	1.15	15.87	C, US
	1800	184T	LM80056	✓	1,136	CCF4P5T62AP5	123	200/400	15.0	87.5	1.15	15.87	C, US
	1800	184T	LM80057	✓	1,136	CCF4P5T61AP5	123	230/460	13.0	87.5	1.15	15.87	C, US
7 1/2	3600	213T	LM80058	C/A	1,537	CCF2P7.5T62AP5	188	200/400	21.9	88.5	1.15	18.20	C, US
	3600	213T	LM80059	C/A	1,537	CCF2P7.5T61AP5	188	230/460	19.0	88.5	1.15	18.20	C, US
	1800	213T	LM80060	C/A	1,512	CCF4P7.5T62AP5	194	200/400	23.0	89.5	1.15	18.20	C, US
	1800	213T	LM80061	C/A	1,512	CCF4P7.5T61AP5	194	230/460	20.0	89.5	1.15	19.63	C, US
10	3600	215T	LM80062	C/A	1,628	CCF2P10T62AP5	217	200/400	27.6	89.5	1.15	19.63	C, US
	3600	215T	LM80063	C/A	1,628	CCF2P10T61AP5	217	230/460	24.0	89.5	1.15	22.63	C, US
	1800	215T	LM80064	C/A	1,684	CCF4P10T62AP5	227	200/400	28.8	89.5	1.15	22.63	C, US
	1800	215T	LM80065	✓	1,684	CCF4P10T61AP5	227	230/460	25.0	89.5	1.15	22.63	C, US
15	3600	254T	LM80066	C/A	2,294	CCF2P15T62AP5	370	200/400	—	90.2	1.15	—	C, US
	3600	254T	LM80067	C/A	2,294	CCF2P15T61AP5	370	230/460	35.0	90.2	1.15	23.69	C, US
	1800	254T	LM80068	C/A	2,200	CCF4P15T62AP5	365	200/400	—	91.0	1.15	—	C, US
	1800	254T	LM80069	C/A	2,200	CCF4P15T61AP5	365	230/460	39.0	91.0	1.15	23.52	C, US
20	3600	256T	LM80070	C/A	2,772	CCF2P20T62AP5	334	200/400	—	90.2	1.15	—	C, US
	3600	256T	LM80071	C/A	2,772	CCF2P20T61AP5	334	230/460	46.5	90.2	1.15	25.27	C, US
	1800	256T	LM80072	C/A	2,361	CCF4P20T62AP5	420	200/400	57.5	91.0	1.15	25.27	C, US
	1800	256T	LM80073	C/A	2,361	CCF4P20T61AP5	420	230/460	50.0	91.0	1.15	25.27	C, US
25	3600	284TS	LM80074	C/A	3,586	CCF2P25TS62YAP5	384	200/400	—	91.0	1.15	—	C, US
	3600	284TS	LM80075	C/A	3,586	CCF2P25TS61YAP5	384	230/460	59.0	91.0	1.15	24.89	C, US
	1800	284T	LM80076	C/A	2,866	CCF4P25T62YAP5	440	200/400	—	92.4	1.15	—	C, US
	1800	284T	LM80077	C/A	2,866	CCF4P25T61YAP5	440	230/460	61.0	92.4	1.15	26.27	C, US

▼ LM Numbers are Lincoln Models

* Full load Amps at lowest listed voltage

C/A - Check Availability

Specifications are subject to change without notice

♥ Note listing on inside back flap

Continued On Next Page

View On-line Technical Information



Explosion Proof Motors

Automotive Duty Motors

Pump Motors

Washguard Motors

Agricultural Motors

HVAC / Fan Motors

Special Voltage Motors

Definite Purpose Motors

Brake Motors

Pump Motors

Lincoln Fire Pump Motors - TEFC - Rigid Base

Three Phase - TEFC - Rigid Base

HP	SYN RPM 60 Hz	NEMA Frame	▼ Catalog Number	Stock	List Price	Model Number	App. Wgt. (lbs)	Voltage	* F. L. Amps	% F.L. Eff.	Service Factor	"C" Dim. (Inches)	♥Notes
30	3600	286TS	LM80078	C/A	4,257	CCF2P30TS62YAP5	428	200/400	—	91.0	1.15	—	C, US
	3600	286TS	LM80079	C/A	4,257	CCF2P30TS61YAP5	428	230/460	70.0	91.0	1.15	26.43	C, US
	1800	286T	LM80080	C/A	3,427	CCF4P30T62YAP5	494	200/400	—	92.4	1.15	—	C, US
	1800	286T	LM80081	C/A	3,427	CCF4P30T61YAP5	494	230/460	72.0	92.4	1.15	27.84	C, US
40	3600	324TS	LM80084	C/A	5,960	CCF2P40TS62YAP5	520	200/400	—	91.7	1.15	—	C, US
	3600	324TS	LM80085	✓	5,960	CCF2P40TS61YAP5	520	230/460	92.0	91.7	1.15	27.47	C, US
	1800	324TS	LM80183	C/A	5,019	CCF4P40TS62YAP5	575	200/400	—	93.0	1.15	—	C, US
	1800	324TS	LM80184	C/A	5,019	CCF4P40TS61YAP5	575	230/460	100.0	93.0	1.15	27.47	C, US
	1800	324T	LM80027	C/A	5,019	CCF4P40T62YAP5	575	200/400	—	93.0	1.15	—	C, US
	1800	324T	LM80086	✓	5,019	CCF4P40T61YAP5	575	230/460	100.0	93.0	1.15	28.97	C, US
50	3600	326TS	LM80028	C/A	6,958	CCF2P50TS62YAP5	540	200/400	—	93.0	1.15	—	C, US
	3600	326TS	LM80087	✓	6,958	CCF2P50TS61YAP5	540	230/460	112.0	93.0	1.15	28.97	C, US
	1800	326TS	LM80186	C/A	5,636	CCF4P50TS62YAP5	675	200/400	—	93.6	1.15	—	C, US
	1800	326TS	LM80187	C/A	5,636	CCF4P50TS61YAP5	675	230/460	122.0	93.6	1.15	28.87	C, US
	1800	326T	LM80029	C/A	5,636	CCF4P50T62YAP5	675	200/400	140.0	93.6	1.15	30.37	C, US
	1800	326T	LM80088	✓	5,636	CCF4P50T61YAP5	675	230/460	122.0	93.6	1.15	31.87	C, US
60	3600	364TS	LM80030	C/A	8,385	CCF2P60TS62YAP5	875	200/400	—	93.0	1.15	—	C, US
	3600	364TS	LM80089	✓	8,385	CCF2P60TS61YAP5	875	230/460	138.0	93.0	1.15	29.38	C, US
	1800	364TS	LM80188	C/A	7,770	CCF4P60TS62YAP5	975	200/400	—	93.6	1.15	—	C, US
	1800	364TS	LM80185	C/A	7,770	CCF4P60TS61YAP5	975	230/460	142.0	93.6	1.15	29.38	C, US
	1800	364T	LM80031	C/A	7,770	CCF4P60T62YAP5	975	200/400	—	93.6	1.15	—	C, US
	1800	364T	LM80090	✓	7,770	CCF4P60T61YAP5	975	230/460	142.0	93.6	1.15	31.50	C, US
75	3600	365TS	LM80032	C/A	9,986	CCF2P75TS62YAP5	1000	200/400	—	93.6	1.15	—	C, US
	3600	365TS	LM80091	✓	9,986	CCF2P75TS61YAP5	1000	230/460	172.0	93.6	1.15	30.38	C, US
	1800	365TS	LM80189	C/A	9,800	CCF4P75TS62YAP5	1025	200/400	—	94.1	1.15	—	C, US
	1800	365TS	LM80190	C/A	9,800	CCF4P75TS61YAP5	1025	230/460	176.0	94.1	1.15	30.38	C, US
	1800	365T	LM80033	C/A	9,800	CCF4P75T62YAP5	1025	200/400	—	94.1	1.15	—	C, US
	1800	365T	LM80092	✓	9,800	CCF4P75T61YAP5	1025	230/460	176.0	94.1	1.15	32.50	C, US
100	3600	405TS	LM80034	C/A	13,662	CCF2P100TS62YAP5	1239	200/400	—	94.1	1.15	—	C, US
	3600	405TS	LM80093	✓	13,662	CCF2P100TS61YAP5	1239	230/460	224.0	94.1	1.15	34.12	C, US
	1800	405TS	LM80191	C/A	11,841	CCF4P100TS62YAP5	1267	200/400	172.0	94.5	1.15	30.38	C, US
	1800	405TS	LM80192	C/A	11,841	CCF4P100TS61YAP5	1267	230/460	224.0	94.5	1.15	32.62	C, US
	1800	405T	LM80035	C/A	11,841	CCF4P100T62YAP5	1267	200/400	—	94.5	1.15	—	C, US
	1800	405T	LM80094	✓	11,841	CCF4P100T61YAP5	1267	230/460	224.0	94.5	1.15	37.12	C, US
125	3600	444TS	LM80036	C/A	16,639	CCF2P125TS6011PYAP5	1750	400	—	94.5	1.15	—	C, US
	3600	444TS	LM80095	✓	16,639	CCF2P125TS64PYAP5	1750	460	—	94.5	1.15	—	C, US
	1800	444TS	LM80193	C/A	15,826	CCF4P125TS6011PYAP5	1805	400	167.0	94.5	1.15	39.60	C, US
	1800	444TS	LM80194	C/A	15,826	CCF4P125TS64PYAP5	1805	460	142.0	94.5	1.15	37.60	C, US
	1800	444T	LM80037	C/A	15,826	CCF4P125T6011PYAP5	1805	400	167.0	94.5	1.15	43.35	C, US
	1800	444T	LM80096	✓	15,826	CCF4P125T64PYAP5	1805	460	145.0	94.5	1.15	43.35	C, US

▼ LM Numbers are Lincoln Models

♥ Note listing on inside back flap

* Full load Amps at lowest listed voltage

Continued On Next Page

C/A - Check Availability

Specifications are subject to change without notice



View On-line Technical Information



Three Phase - TEFC - Rigid Base

HP	SYN RPM 60 Hz	NEMA Frame	▼ Catalog Number	Stock	List Price	Model Number	App. Wgt. (lbs)	Voltage	* F. L. Amps	% F.L. Eff.	Service Factor	"C" Dim. (Inches)	♥Notes
150	1800	445TS	LM80195	C/A	18,357	CCF4P150TS6011PYAP5	2116	400	—	95.0	1.15	—	C, US
	1800	445TS	LM80196	C/A	18,357	CCF4P150TS64PYAP5	2116	460	170.0	95.0	1.15	39.60	C, US
	1800	445T	LM80039	C/A	18,357	CCF4P150T6011PYAP5	2116	400	—	95.0	1.15	—	C, US
	1800	445T	LM80098	√	18,357	CCF4P150T64PYAP5	2116	460	170.0	95.0	1.15	43.35	C, US
200	1800	445TS	LM80197	C/A	22,702	CCF4P200TS6011PYAP5	2311	400	—	95.4	1.15	—	C, US
	1800	445TS	LM80198	C/A	22,702	CCF4P200TS64PYAP5	2311	460	—	95.4	1.15	—	C, US
	1800	445T	LM80041	C/A	22,702	CCF4P200T6011PYAP5	2311	400	—	95.4	1.15	—	C, US
	1800	445T	LM80100	√	22,702	CCF4P200T64PYAP5	2311	460	224.0	95.4	1.15	43.35	C, US
250	1800	449TS	LM80199	C/A	27,097	CC449F4P250TS6011PYAP5	2600	400	—	93.0	1.15	—	C, US
	1800	449TS	LM80200	C/A	27,097	CC449F4P250TS64PYAP5	2600	460	326.0	93.0	1.15	48.09	C, US
	1800	449T	LM80043	C/A	27,097	CC449F4P250T6011PYAP5	2600	400	—	95.4	1.15	—	C, US
	1800	449T	LM80102	√	27,097	CC449F4P250T64PYAP5	2600	460	290.0	95.4	1.15	51.85	C, US
300	1800	449TS	LM80201	C/A	28,331	CCF4P300TS6011PYAP5	3041	400	374.0	93.0	1.15	48.09	C, US
	1800	449TS	LM80202	C/A	28,331	CCF4P300TS64PYAP5	3041	460	335.0	93.0	1.15	48.09	C, US
	1800	449T	LM80045	C/A	28,331	CCF4P300T6011PYAP5	3041	400	385.0	95.4	1.15	51.86	C, US
	1800	449T	LM80018	√	28,331	CCF4P300T64PYAP5	3041	460	335.0	95.4	1.15	51.86	C, US
350	1800	449TS	LM80203	C/A	29,341	CCF4P350TS6011PYAP5	3202	400	—	93.0	1.15	—	C, US
	1800	449TS	LM80204	C/A	29,341	CCF4P350TS64PYAP5	3202	460	400.0	93.0	1.15	48.09	C, US
	1800	449T	LM80047	C/A	29,341	CCF4P350T6011PYAP5	3202	400	—	95.4	1.15	—	C, US
	1800	449T	LM80020	√	29,341	CCF4P350T64PYAP5	3202	460	400.0	95.4	1.15	51.88	C, US
400	1800	5011L	LM80049	C/A	60,869	CC5011F4P400L6011PYAP5	5500	400	—	95.8	1.15	—	C, US
	1800	449T	LM80022†	√	60,869	CC5011F4P400L64PYAP5	5500	460	448.0	95.8	1.15	51.85	C, US
450	1800	5011L	LM80082	C/A	62,573	CC5011F4P450L6011PYAP5	5500	400	—	95.8	1.15	—	C, US
	1800	5011L	LM80083±	√	62,573	CC5011F4P450L64PYAP5	5500	460	495.0	95.8	1.15	70.94	C, US

▼ LM Numbers are Lincoln Models

♥ Note listing on inside back flap

* Full load Amps at 400 or 460 Volts

Note † - 50 HZ rated at 300 HP

Note ± - 50 HZ rated at 350 HP

C/A - Check Availability

Specifications are subject to change without notice

View On-line Technical Information



Explosion Proof Motors

Automotive Duty Motors

Pump Motors

Washguard Motors

Agricultural Motors

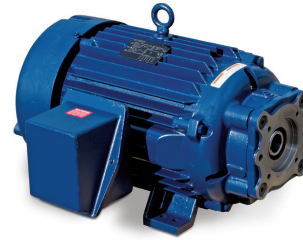
HVAC / Fan Motors

Special Voltage Motors

Definite Purpose Motors

Brake Motors

Hydraulic SAE Pump Motors



Specifications:

- Rolled steel and cast iron construction
- Rigid base construction
- 230/460 Volt
- IRIS™ Inverter insulation system
- 575 Volt ratings available - contact your local sales office
- Higher HP SAE Pump motors available - contact your local sales office

Three Phase - TEFC - SAE Flange - Rigid Base

HP	SYN RPM 60 Hz	NEMA Frame	▼ Catalog Number	Stock	List Price	Model Number	Flange Type	Voltage	* F. L. Amps	% F.L. Eff.	Service Factor	"C" Dim. (Inches)	♥Notes
1/2	3600	56YZ	117813.00	C/A	453	C6T34FZ47	2-Bolt SAE AA	208-230/460	2.0	72.0	1.15	8.67	S, US
	3600	56YZ	117925.00	C/A	453	C6T34FZ48	4-Bolt SAE AA	208-230/460	2.0	72.0	1.15	8.67	S, US
	3600	56YZ	117926.00	C/A	453	C6T34FZ49	2-Bolt SAE A	208-230/460	2.0	72.0	1.15	8.50	S, US
	3600	56YZ	117927.00	C/A	453	C6T34FZ50	2-Bolt SAE B	208-230/460	2.0	72.0	1.15	8.93	S, US
	1800	56YZ	117814.00	C/A	393	C6T17FZ97	2-Bolt SAE AA	208-230/460	2.0	74.0	1.15	8.67	S, US
	1800	56YZ	117928.00	C/A	393	C6T17FZ100	4-Bolt SAE AA	208-230/460	2.0	74.0	1.15	8.67	S, US
	1800	56YZ	117929.00	C/A	393	C6T17FZ101	2-Bolt SAE A	208-230/460	2.0	74.0	1.15	8.50	S, US
	1800	56YZ	117930.00	C/A	393	C6T17FZ102	2-Bolt SAE B	208-230/460	2.0	74.0	1.15	8.93	S, US
3/4	3600	56YZ	117815.00	C/A	548	C6T34FZ51	2-Bolt SAE AA	208-230/460	2.4	75.5	1.15	8.67	S, US
	3600	56YZ	117931.00	C/A	548	C6T34FZ55	4-Bolt SAE AA	208-230/460	2.4	75.5	1.15	8.67	S, US
	3600	56YZ	117932.00	C/A	548	C6T34FZ56	2-Bolt SAE A	208-230/460	2.4	75.5	1.15	8.50	S, US
	3600	56YZ	117933.00	C/A	548	C6T34FZ57	2-Bolt SAE B	208-230/460	2.4	75.5	1.15	8.93	S, US
	1800	56YZ	117816.00	C/A	516	C6T17FZ98	2-Bolt SAE AA	208-230/460	2.8	77.0	1.15	9.17	S, US
	1800	56YZ	117934.00	C/A	516	C6T17FZ104	4-Bolt SAE AA	208-230/460	2.8	77.0	1.15	9.17	S, US
	1800	56YZ	117935.00	C/A	516	C6T17FZ105	2-Bolt SAE A	208-230/460	2.8	77.0	1.15	9.00	S, US
	1800	56YZ	117936.00	C/A	516	C6T17FZ106	2-Bolt SAE B	208-230/460	2.8	77.0	1.15	9.43	S, US
1	3600	56YZ	117817.00	C/A	541	C6T34FZ52	2-Bolt SAE AA	208-230/460	3.2	77.0	1.15	8.67	S, US
	3600	56YZ	117937.00	C/A	541	C6T34FZ58	4-Bolt SAE AA	208-230/460	3.2	77.0	1.15	8.67	S, US
	3600	56YZ	117938.00	C/A	541	C6T34FZ59	2-Bolt SAE A	208-230/460	3.2	77.0	1.15	9.00	S, US
	3600	56YZ	117939.00	C/A	541	C6T34FZ60	2-Bolt SAE B	208-230/460	3.2	77.0	1.15	9.93	S, US
	1800	56YZ	117818.00	C/A	541	C6T17FZ99	2-Bolt SAE AA	208-230/460	3.8	77.0	1.15	9.17	S, US
	1800	56YZ	117940.00	C/A	541	C6T17FZ108	4-Bolt SAE AA	208-230/460	3.8	77.0	1.15	9.17	S, US
	1800	56YZ	117941.00	C/A	541	C6T17FZ109	2-Bolt SAE A	208-230/460	3.8	77.0	1.15	9.00	S, US
	1800	56YZ	117942.00	C/A	541	C6T17FZ110	2-Bolt SAE B	208-230/460	3.8	77.0	1.15	9.43	S, US
	1800	143YZ	122035.00	C/A	723	C143T17FZ2	2-Bolt SAE AA	208-230/460	3.8	77.0	1.15	10.67	S, US
	1800	143YZ	122036.00	C/A	723	C143T17FZ3	4-Bolt SAE AA	208-230/460	3.8	77.0	1.15	10.67	S, US
	1800	143YZ	122037.00	C/A	723	C143T17FZ4	2-Bolt SAE A	208-230/460	3.8	77.0	1.15	10.50	S, US
	1800	143YZ	122038.00	C/A	723	C143T17FZ5	2-Bolt SAE B	208-230/460	3.8	77.0	1.15	10.93	S, US

Note - 254T frame and larger - 2 & 4 bolt B flange has a 13 teeth internal spline
 Note - 254T frame and larger - 2 & 4 bolt BB flange has a 15 teeth internal spline
 C/A = Check Availability

♥ Note listing on inside back flap
 Continued On Next Page

Specifications are subject to change without notice



View On-line Technical Information



Three Phase - TEFC - SAE Flange - Rigid Base

HP	SYN RPM 60 Hz	NEMA Frame	▼ Catalog Number	Stock	List Price	Model Number	Flange Type	Voltage	* F. L. Amps	% F.L. Eff.	Service Factor	"C" Dim. (Inches)	♥Notes	
1 1/2	3600	56YZ	117819.00	C/A	579	C6T34FZ53	2-Bolt SAE AA	208-230/460	4.2	81.5	1.15	9.67	S, US	
	3600	56YZ	117943.00	C/A	579	C6T34FZ61	4-Bolt SAE AA	208-230/460	4.2	81.5	1.15	9.67	S, US	
	3600	56YZ	117944.00	C/A	579	C6T34FZ62	2-Bolt SAE A	208-230/460	4.2	81.5	1.15	10.00	S, US	
	3600	56YZ	117945.00	C/A	579	C6T34FZ63	2-Bolt SAE B	208-230/460	4.2	81.5	1.15	10.43	S, US	
	3600	143YZ	122039.00	C/A	673	C143T34FZ1	2-Bolt SAE AA	208-230/460	4.2	81.5	1.15	10.67	S, US	
	3600	143YZ	122040.00	C/A	673	C143T34FZ2	4-Bolt SAE AA	208-230/460	4.2	81.5	1.15	10.67	S, US	
	3600	143YZ	122041.00	C/A	673	C143T34FZ3	2-Bolt SAE A	208-230/460	4.2	81.5	1.15	10.50	S, US	
	3600	143YZ	122042.00	C/A	673	C143T34FZ4	2-Bolt SAE B	208-230/460	4.8	81.5	1.15	10.93	S, US	
1800	56YZ	117820.00	C/A	595	C6T17FZ103	2-Bolt SAE AA	208-230/460	5.0	78.5	1.15	10.17	S, US		
	56YZ	117946.00	C/A	595	C6T17FZ111	4-Bolt SAE AA	208-230/460	5.0	78.5	1.15	10.17	S, US		
	56YZ	117947.00	C/A	595	C6T17FZ112	2-Bolt SAE A	208-230/460	5.0	78.5	1.15	10.00	S, US		
	56YZ	117948.00	C/A	595	C6T17FZ113	2-Bolt SAE B	208-230/460	5.0	78.5	1.15	10.43	S, US		
	145YZ	122043.00	C/A	765	C145T17FZ18	2-Bolt SAE AA	208-230/460	5.0	78.5	1.15	10.67	S, US		
	145YZ	122044.00	C/A	765	C145T17FZ19	4-Bolt SAE AA	208-230/460	5.0	78.5	1.15	10.67	S, US		
	145YZ	122045.00	C/A	765	C145T17FZ20	2-Bolt SAE A	208-230/460	5.0	78.5	1.15	10.50	S, US		
	145YZ	122046.00	C/A	765	C145T17FZ21	2-Bolt SAE B	208-230/460	5.0	78.5	1.15	10.93	S, US		
2	3600	56YZ	117821.00	C/A	600	C6T34FZ54	2-Bolt SAE AA	208-230/460	5.6	82.5	1.15	10.17	S, US	
	3600	56YZ	117949.00	C/A	600	C6T34FZ64	4-Bolt SAE AA	208-230/460	5.6	82.5	1.15	10.17	S, US	
	3600	56YZ	117950.00	C/A	600	C6T34FZ65	2-Bolt SAE A	208-230/460	5.6	82.5	1.15	10.50	S, US	
	3600	56YZ	117951.00	C/A	600	C6T34FZ66	2-Bolt SAE B	208-230/460	5.6	82.5	1.15	9.93	S, US	
	1800	56YZ	117822.00	C/A	609	C6T17FZ107	2-Bolt SAE AA	208-230/460	6.2	81.5	1.15	10.67	S, US	
	1800	56YZ	117952.00	C/A	609	C6T17FZ114	4-Bolt SAE AA	208-230/460	6.2	81.5	1.15	10.67	S, US	
	1800	56YZ	117953.00	C/A	609	C6T17FZ115	2-Bolt SAE A	208-230/460	6.2	81.5	1.15	10.50	S, US	
	1800	56YZ	117954.00	C/A	609	C6T17FZ116	2-Bolt SAE B	208-230/460	6.2	81.5	1.15	11.43	S, US	
1800	145YZ	122047.00	C/A	814	C145T17FZ22	2-Bolt SAE AA	208-230/460	6.2	81.5	1.15	10.67	S, US		
	145YZ	122048.00	C/A	814	C145T17FZ23	4-Bolt SAE AA	208-230/460	6.2	81.5	1.15	10.67	S, US		
	145YZ	122049.00	C/A	814	C145T17FZ24	2-Bolt SAE A	208-230/460	6.2	81.5	1.15	11.00	S, US		
	145YZ	122050.00	C/A	814	C145T17FZ25	2-Bolt SAE B	208-230/460	6.2	81.5	1.15	11.43	S, US		
	3	3600	182TYZ	132345.00	✓	1,113	C182T34FZ7	2-Bolt SAE AA	208-230/460	7.8	86.5	1.15	12.04	S, MX
		3600	182TYZ	132356.00	✓	1,113	C182T34FZ8	2-Bolt SAE A	208-230/460	7.8	86.5	1.15	11.96	S, MX
		3600	182TYZ	132357.00	✓	1,113	C182T34FZ9	2-Bolt SAE B	208-230/460	7.8	86.5	1.15	12.21	S, MX
		1800	182TYZ	132346.00	✓	1,088	C182T17FZ17	2-Bolt SAE AA	208-230/460	8.6	87.5	1.15	12.04	S, MX
1800		182TYZ	132359.00	✓	1,088	C182T17FZ18	2-Bolt SAE A	208-230/460	8.6	87.5	1.15	11.96	S, MX	
1800		182TYZ	132360.00	✓	1,088	C182T17FZ19	2-Bolt SAE B	208-230/460	8.6	87.5	1.15	12.21	S, MX	
5	3600	184TYZ	132347.00	✓	1,230	C184T34FZ4	2-Bolt SAE AA	208-230/460	12.0	87.5	1.15	12.04	S, MX	
	3600	184TYZ	132362.00	✓	1,230	C184T34FZ5	2-Bolt SAE A	208-230/460	12.0	87.5	1.15	11.96	S, MX	
	3600	184TYZ	132363.00	✓	1,230	C184T34FZ6	2-Bolt SAE B	208-230/460	12.0	87.5	1.15	12.21	S, MX	
	1800	184TYZ	132348.00	✓	1,162	C184T17FZ35	2-Bolt SAE AA	208-230/460	13.0	87.5	1.15	12.04	S, MX	
	1800	184TYZ	132365.00	✓	1,162	C184T17FZ31	2-Bolt SAE A	208-230/460	13.0	87.5	1.15	11.96	S, MX	
	1800	184TYZ	132366.00	✓	1,162	C184T17FZ36	2-Bolt SAE B	208-230/460	13.0	87.5	1.15	12.21	S, MX	
7 1/2	3600	213TYZ	141156.00	✓	2,212	C213T34FZ1	2-Bolt SAE AA	208-230/460	18.4	88.5	1.15	17.22	S, MX	
	3600	213TYZ	141170.00	✓	2,212	C213T34FZ2	2-Bolt SAE A	208-230/460	18.4	88.5	1.15	17.05	S, MX	
	3600	213TYZ	141171.00	✓	2,212	C213T34FZ3	2-Bolt SAE B	208-230/460	18.4	88.5	1.15	17.18	S, MX	
	1800	213TYZ	141157.00	✓	2,144	C213T17FZ1	2-Bolt SAE AA	208-230/460	20.0	89.5	1.15	17.22	S, MX	
	1800	213TYZ	141173.00	✓	2,144	C213T17FZ2	2-Bolt SAE A	208-230/460	20.0	89.5	1.15	17.05	S, MX	
	1800	213TYZ	141174.00	✓	2,144	C213T17FZ3	2-Bolt SAE B	208-230/460	20.0	89.5	1.15	17.18	S, MX	

Note - 254T frame and larger - 2 & 4 bolt B flange has a 13 teeth internal spline
 Note - 254T frame and larger - 2 & 4 bolt BB flange has a 15 teeth internal spline
 C/A = Check Availability
 Specifications are subject to change without notice

♥ Note listing on inside back flap

Continued On Next Page

View On-line Technical Information



Explosion Proof Motors

Automotive Duty Motors

Pump Motors

Washguard Motors

Agricultural Motors

HVAC / Fan Motors

Special Voltage Motors

Definite Purpose Motors

Brake Motors

Hydraulic SAE Pump Motors

Three Phase - TEFC - SAE Flange - Rigid Base

HP	SYN RPM 60 Hz	NEMA Frame	▼ Catalog Number	Stock	List Price	Model Number	Flange Type	Voltage	* F. L. Amps	% F.L. Eff.	Service Factor	"C" Dim. (Inches)	♥Notes	
10	3600	215TYZ	141158.00	✓	2,486	C215T34FZ1	2-Bolt SAE AA	208-230/460	24.0	89.5	1.15	17.22	S, MX	
	3600	215TYZ	141176.00	✓	2,486	C215T34FZ2	2-Bolt SAE A	208-230/460	24.0	89.5	1.15	17.05	S, MX	
	3600	215TYZ	141177.00	✓	2,486	C215T34FZ3	2-Bolt SAE B	208-230/460	24.0	89.5	1.15	17.18	S, MX	
	1800	215TYZ	141159.00	✓	2,242	C215T17FZ5	2-Bolt SAE AA	208-230/460	26.0	89.5	1.15	17.22	S, MX	
	1800	215TYZ	141179.00	✓	2,242	C215T17FZ6	2-Bolt SAE A	208-230/460	26.0	89.5	1.15	17.05	S, MX	
	1800	215TYZ	141180.00	✓	2,242	C215T17FZ7	2-Bolt SAE B	208-230/460	26.0	89.5	1.15	17.18	S, MX	
15	3600	254TYZ	850788.00	C/A	4,752	254TTFNA17007	2-Bolt SAE A	230/460	35.5	89.5	1.15	23.66	C, US	
	3600	254TYZ	850820.00	C/A	4,690	254TTFNA17009	2 & 4 Bolt SAE B	230/460	35.5	89.5	1.15	23.66	C, US	
	3600	254TYZ	850821.00	C/A	4,594	254TTFNA17011	2 & 4 Bolt SAE BB	230/460	35.5	89.5	1.15	23.66	C, US	
	3600	254TYZ	850822.00	C/A	4,752	254TTFNA17008	2 & 4 Bolt SAE C	230/460	35.5	89.5	1.15	23.66	C, US	
	1800	254TYZ	850789.00	C/A	3,651	254TTFNA17053	2-Bolt SAE A	230/460	37	89.5	1.15	23.66	C, US	
	1800	254TYZ	850823.00	C/A	3,651	254TTFNA17055	2 & 4 Bolt SAE B	230/460	37	89.5	1.15	23.66	C, US	
	1800	254TYZ	850824.00	C/A	3,651	254TTFNA17056	2 & 4 Bolt SAE BB	230/460	37	89.5	1.15	23.66	C, US	
	1800	254TYZ	850825.00	C/A	3,651	254TTFNA17054	2 & 4 Bolt SAE C	230/460	37	89.5	1.15	23.66	C, US	
20	3600	256TYZ	850790.00	C/A	5,157	256TTFNA17015	2-Bolt SAE A	230/460	47	90.2	1.15	23.66	C, US	
	3600	256TYZ	850826.00	C/A	5,096	256TTFNA17016	2 & 4 Bolt SAE B	230/460	47	90.2	1.15	23.66	C, US	
	3600	256TYZ	850827.00	C/A	4,999	256TTFNA17017	2 & 4 Bolt SAE BB	230/460	47	90.2	1.15	23.66	C, US	
	3600	256TYZ	850828.00	C/A	5,157	256TTFNA17011	2 & 4 Bolt SAE C	230/460	47	90.2	1.15	23.66	C, US	
	1800	256TYZ	850791.00	C/A	4,148	256TTFNA18540	2-Bolt SAE A	230/460	50.0	90.2	1.15	25.44	C, US	
	1800	256TYZ	850829.00	C/A	4,148	256TTFNA17052	2 & 4 Bolt SAE B	230/460	50.0	90.2	1.15	25.44	C, US	
1800	256TYZ	850830.00	C/A	4,148	256TTFNA17054	2 & 4 Bolt SAE BB	230/460	50.0	90.2	1.15	25.44	C, US		
	256TYZ	850831.00	C/A	4,148	256TTFNA17055	2 & 4 Bolt SAE C	230/460	50.0	90.2	1.15	25.44	C, US		
	25	3600	284TYZ	850792.00	C/A	5,296	284TTFPA17011	2-Bolt SAE A	230/460	60	91.0	1.15	23.94	C, US
		3600	284TYZ	850832.00	C/A	5,235	284TTFPA17012	2 & 4 Bolt SAE B	230/460	60	91.0	1.15	23.94	C, US
		3600	284TYZ	850833.00	C/A	5,027	284TTFPA17013	2 & 4 Bolt SAE BB	230/460	60	91.0	1.15	23.94	C, US
		3600	284TYZ	850834.00	C/A	5,296	284TTFPA17010	2 & 4 Bolt SAE C	230/460	60	91.0	1.15	23.94	C, US
1800		284TYZ	850793.00	C/A	4,702	284TTFPA17052	2-Bolt SAE A	230/460	61	91.7	1.15	23.94	C, US	
1800		284TYZ	850835.00	C/A	4,702	284TTFPA17051	2 & 4 Bolt SAE B	230/460	61	91.7	1.15	25.44	C, US	
1800	284TYZ	850836.00	C/A	4,702	284TTFPA17049	2 & 4 Bolt SAE BB	230/460	61	91.7	1.15	23.94	C, US		
	284TYZ	850837.00	C/A	4,702	284TTFPA17050	2 & 4 Bolt SAE C	230/460	61	91.7	1.15	23.94	C, US		
	30	3600	286TYZ	850794.00	C/A	5,923	286TTFNA17005	2-Bolt SAE A	230/460	67	93.0	1.15	25.35	C, US
		3600	286TYZ	850838.00	C/A	5,862	286TTFNA17006	2 & 4 Bolt SAE B	230/460	70	91.0	1.15	25.44	C, US
3600		286TYZ	850839.00	C/A	5,766	286TTFNA17007	2 & 4 Bolt SAE BB	230/460	70	91.0	1.15	25.35	C, US	
3600		286TYZ	850840.00	C/A	5,923	286TTFNA17008	2 & 4 Bolt SAE C	230/460	70	91.0	1.15	25.35	C, US	
1800		286TYZ	850795.00	C/A	4,979	286TTFNA17055	2-Bolt SAE A	230/460	73	94.1	1.15	25.35	C, US	
1800		286TYZ	850841.00	C/A	4,979	286TTFNA17058	2 & 4 Bolt SAE B	230/460	73	94.1	1.15	25.35	C, US	
1800	286TYZ	850842.00	C/A	4,979	286TTFNA17057	2 & 4 Bolt SAE BB	230/460	73	94.1	1.15	25.35	C, US		
	286TYZ	850843.00	C/A	4,979	286TTFNA17056	2 & 4 Bolt SAE C	230/460	76	92.4	1.15	25.35	C, US		

Note - 254T frame and larger - 2 & 4 bolt B flange has a 13 teeth internal spline
 Note - 254T frame and larger - 2 & 4 bolt BB flange has a 15 teeth internal spline
 C/A = Check Availability
 Specifications are subject to change without notice

♥ Note listing on inside back flap
 Continued On Next Page



View On-line Technical Information



Three Phase - TEFC - SAE Flange - Rigid Base

HP	SYN RPM 60 Hz	NEMA Frame	▼ Catalog Number	Stock	List Price	Model Number	Flange Type	Voltage	* F. L. Amps	% F.L. Eff.	Service Factor	"C" Dim. (Inches)	♥ Notes
40	3600	324TYZ	850796.00	C/A	6,619	324TTFPA17008	2-Bolt SAE A	230/460	95	90.2	1.15	26.08	C, US
	3600	324TYZ	850844.00	C/A	6,557	324TTFPA17007	2 & 4 Bolt SAE B	230/460	95	90.2	1.15	26.08	C, US
	3600	324TYZ	850845.00	C/A	6,461	324TTFPA17009	2 & 4 Bolt SAE BB	230/460	95	90.2	1.15	26.08	C, US
	3600	324TYZ	850846.00	C/A	6,619	324TTFPA17006	2 & 4 Bolt SAE C	230/460	95	90.2	1.15	26.08	C, US
	1800	324TYZ	850797.00	C/A	5,172	324TTFP17026	2-Bolt SAE A	230/460	100	92.4	1.15	26.08	C, US
	1800	324TYZ	850847.00	C/A	5,172	324TTFPA17027	2 & 4 Bolt SAE B	230/460	100	92.4	1.15	26.08	C, US
	1800	324TYZ	850848.00	C/A	5,172	324TTFPA17052	2 & 4 Bolt SAE BB	230/460	100	92.4	1.15	26.08	C, US
	1800	324TYZ	850849.00	C/A	5,172	324TTFPA17027	2 & 4 Bolt SAE C	230/460	100	92.4	1.15	26.08	C, US
50	3600	326TYZ	850798.00	C/A	6,929	326TTFPA17009	2-Bolt SAE A	230/460	90	93	1.15	27.58	C, US
	3600	326TYZ	850850.00	C/A	6,868	326TTFPA17011	2 & 4 Bolt SAE B	230/460	115	91	1.15	27.58	C, US
	3600	326TYZ	850851.00	C/A	6,771	326TTFPA17013	2 & 4 Bolt SAE BB	230/460	115	91	1.15	27.58	C, US
	3600	326TYZ	850852.00	C/A	6,929	326TTFPA17010	2 & 4 Bolt SAE C	230/460	115	91	1.15	27.58	C, US
	1800	326TYZ	850799.00	C/A	6,315	326TTFPA17051	2-Bolt SAE A	230/460	122	93	1.15	27.58	C, US,ⓧ
	1800	326TYZ	850853.00	C/A	6,315	326TTFPA17050	2 & 4 Bolt SAE B	230/460	122	93	1.15	27.58	C, US,ⓧ
	1800	326TYZ	850854.00	C/A	6,315	326TTFPA17053	2 & 4 Bolt SAE BB	230/460	122	93	1.15	27.58	C, US,ⓧ
	1800	326TYZ	850855.00	C/A	6,315	326TTFPA17049	2 & 4 Bolt SAE C	230/460	122	93	1.15	27.58	C, US,ⓧ

ⓧ 2:1 Constant torque, all others are 10:1 constant torque

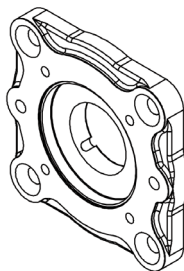
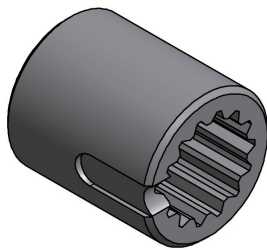
♥ Note listing on inside back flap

Note - 254T frame and larger - 2 & 4 bolt B flange has a 13 teeth internal spline

Note - 254T frame and larger - 2 & 4 bolt BB flange has a 15 teeth internal spline

C/A Check Availability

Specifications are subject to change without notice



SAE Pump Pad Kits and Bushing Kits

Kit Catalog Number	254 - 449 Frame Kits	Lead Time (days)	List Price
174341.00	Kit - SAE (A)	30	394
174342.00	Kit - SAE (B)	30	336
174343.00	Kit - SAE (BB)	30	336
174344.00	Kit - SAE (C)	30	242
174345.00	Kit Bushing SAE (A)	30	150
174346.00	Kit Bushing SAE (B)	30	150
174347.00	Kit Bushing SAE (BB)	30	150
174348.00	Kit Bushing SAE (C)	30	150

View On-line Technical Information



Explosion Proof Motors

Automotive Duty Motors

Pump Motors

Washguard Motors

Agricultural Motors

HVAC / Fan Motors

Special Voltage Motors

Definite Purpose Motors

Brake Motors