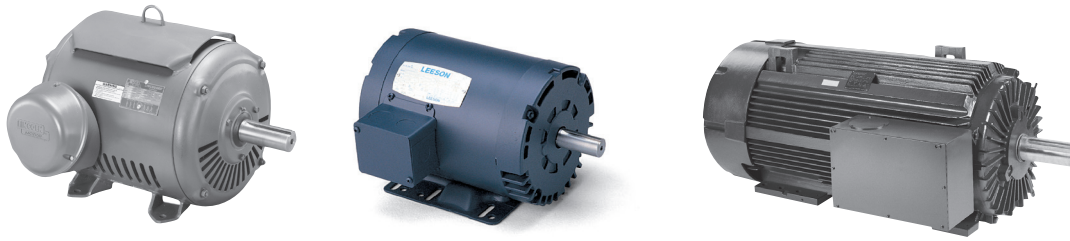


## Special Voltage Motors

**General Purpose – Totally Enclosed & Drip-Proof - 575 Volt - 200/400 Volt  
50 HZ - Medium Voltage Designs  
Steel Frame – Aluminum Frame – Cast Iron Frame**



- Standard, EPart and Premium efficient ratings
- Inverter rated
- Class B insulation systems – 42, 48 and 56 frames
- Class F insulation system – 140 frame and higher
- Shielded ball bearings for direct coupled applications. Contact your local sales office for belted load applications
- Rolled steel, aluminum, and cast iron frame material designs
- Continuous duty
- Dynamically balanced rotors
- Torques exceed NEMA performance standards
- UL recognized and CSA certified

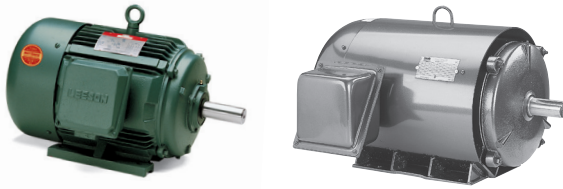
### Applications:

For use where special voltages are required. Ideally suited for use on pumps, compressors, fans, blowers, conveyors, machine tools and other industrial applications



# Special Voltage Motors

## 575 Volt - Three Phase - TEFC



### Three Phase - TEFC - Rigid Base

HP	RPM 60 Hz	NEMA Frame	▼ Catalog Number	Stock	List Price	Model Number	App. Wgt. (lbs)	Voltage	F. L. Amps @ 575 V	% F.L. Eff.	Service Factor	"C" Dim. (Inches)	♥ Notes
1/2	3600	56	110714.00	✓	416	C6T34NB6	25	575	0.6	82.5	1.15	10.40	S, US, 12
	1800	56	110199.00	✓	454	C6T17NB4	25	575	0.8	78.5	1.15	9.88	S, US, 12
	1800	56	LM24154	✓	473	SRF4S.5T65	22	575	0.9	70.0	1.25	10.72	S, MX
	1800	S56	101051.00	✓	454	C4T17FH3	24	575	0.8	68.0	1.15	9.94	S, MX
	1200	56	LM24295	C/A	684	SRF6S0.5T65	24	575	1.1	68.0	1.15	11.82	S, MX
3/4	3600	56	110354.00	✓	458	C6T34FB8	22	575	0.9	75.5	1.15	10.81	S, US
	1800	56	110178.00	✓	482	C6T17FB3	22	575	1.1	77.0	1.15	10.81	S, US
	1200	56	111394.00	✓	686	C6T11FB8	30	575	1.2	75.5	1.15	11.81	S, US
1	3600	56	110715.00	✓	535	C6T34FB15	24	575	1.3	77.0	1.15	10.81	S, US
	1800	56	110206.00	✓	506	C6T17FB4	24	575	1.5	77.0	1.15	11.31	S, US
	1800	56	LM25097	✓	526	SRF4S1T65	27	575	1.5	77.0	1.15	12.32	S, MX
	1800	143T	121937.00	✓	772	C143T17FB29	32	575	1.1	85.5	1.15	13.25	S, US
	1800	143T	LM24109	✓	589	SSF4P1T65	36	575	1.2	82.5	1.25	12.87	S, MX
	1200	145T	121938.00	✓	913	C145T11FB31	47	575	1.4	82.5	1.25	13.75	S, US
1 1/2	3600	145T	121939.00	✓	789	C145T34FB41	33	575	1.6	84.0	1.25	13.25	S, US
	1800	56	110893.00	✓	570	C6T17FB37	30	575	2.0	78.5	1.15	11.81	S, US
	1800	145T	121940.00	✓	801	C145T17FB90	34	575	1.8	86.5	1.15	13.75	S, US
	1800	145T	LM24142	C/A	564	SSF4P1.5T65	48	575	1.7	84.0	1.15	14.37	S, MX
	1200	182T	132251.00	✓	1,330	C182T11FB13	89	575	2.5	87.5	1.15	15.96	S, MX
2	3600	56H	LM25100	✓	674	SRF2S2T65	39	575	2.8	80.0	1.15	11.82	S, US
	3600	145T	121941.00	✓	863	C145T34FB42	44	575	2.1	85.5	1.15	13.75	S, US
	3600	145T	LM25103	✓	733	SSF2P2T65	39	575	2.1	84.0	1.25	13.37	S, US
	1800	145T	LM24108	✓	593	SSF4PT65	45	575	2.2	84.0	1.25	13.87	S, MX
	1800	145T	121942.00	✓	834	C145T17FB91	45	575	2.2	86.5	1.15	14.76	S, US
	1200	184T	132252.00	✓	1,355	C184T11FB26	92	575	2.9	88.5	1.15	15.96	S, MX

#### Green items are Premium Efficient

▼ LM Numbers are Lincoln Models

Note 12 - TENV

C/A - Check Availability

Other stock 575V motors are available from LEESON through our Canadian facility.

Contact LEESON for availability.

Specifications are subject to change without notice

♥ Note listing on inside back flap

Continued To Next Page

View On-line Technical Information



Explosion Proof  
Motors

Automotive  
Duty Motors

Pump  
Motors

Washguard  
Motors

Agricultural  
Motors

HVAC / Fan  
Motors

Special Voltage  
Motors

Definite  
Purpose Motors

Brake Motors

## Special Voltage Motors

### 575 Volt - Three Phase - TEFC

#### Three Phase - TEFC - Rigid Base

HP	RPM 60 Hz	NEMA Frame	▼ Catalog Number	Stock	List Price	Model Number	App. Wgt. (lbs)	Voltage	F. L. Amps @ 575 V	% F.L. Eff.	Service Factor	"C" Dim. (Inches)	♥Notes
3	3600	182T	171624.60	√	1,197	C182T34FB7	66	575	3.0	86.5	1.15	13.96	C, CN
	3600	182T	LM16383	C/A	882	AF2P3T65	72	575	3.0	85.5	1.25	14.19	A, US
	1800	182T	132253.00	√	944	C182T17FB52	80	575	3.3	89.5	1.15	14.96	S, MX
	1800	182T	LM16384	D	795	AF4P3T65	77	575	3.4	87.5	1.25	14.19	A, US
	1800	182T	LM33603	C/A	795	AF4P3T65AP26	77	575	3.4	87.5	1.25	14.19	A, MX
5	3600	184T	132254.00	√	1,070	C184T34FB24	88	575	4.8	88.5	1.15	16.46	S, MX
	1800	184T	132255.00	√	1,037	C184T17FB64	94	575	5.2	89.5	1.15	15.96	S, MX
	1800	184T	LM16387	D	918	AF4P5T65	88	575	5.2	87.5	1.25	15.19	A, US
	1800	184T	LM33488	√	918	AF4P5T65AP26	88	575	5.2	87.5	1.25	14.96	A, MX
	1200	215T	LM16388	√	1,665	AF6P5T65	155	575	6.0	87.5	1.25	18.70	A, US
	900	254T	LM33171	C/A	2,701	AF8P5T65	165	575	6.0	85.5	1.15	23.40	A, US
7 1/2	3600	213T	170196.60	√	1,527	C213T34FB43	156	575	7.4	90.2	1.25	19.84	C, CN
	1800	213T	141116.00	√	1,332	C213T17FB20	144	575	8.2	91.7	1.25	18.70	S, MX
	1800	213T	LM16391	√	1,475	AF4P7.5T65	160	575	8.0	91.0	1.25	19.70	A, US
10	3600	215T	170197.60	√	1,809	C215T34FB48	181	575	9.5	91.7	1.25	19.61	C, CN
	1800	215T	170212.60	√	1,756	C215T17FB44	177	575	10.1	91.7	1.25	19.61	C, CN
	1800	215T	LM16395	√	1,631	AF4P10T65	138	575	10.8	89.5	1.25	18.70	A, US

#### Green items are Premium Efficient

♥ Note listing on inside back flap

▼ LM Numbers are Lincoln Models

Continued To Next Page

D = To be discontinued when inventory is depleted

C/A - Check Availability

Other stock 575V motors are available from LEESON through our Canadian facility.  
Contact LEESON for availability.

Specifications are subject to change without notice



View On-line Technical Information



# Special Voltage Motors

## 575 Volt - Three Phase - TEFC

### Three Phase - TEFC - Rigid Base

HP	RPM 60 Hz	NEMA Frame	▼ Catalog Number	Stock	List Price	Model Number	App. Wgt. (lbs)	Voltage	F. L. Amps @ 575 V	% F.L. Eff.	Service Factor	"C" Dim. (Inches)	♥Notes
15	3600	254T	170198.60	√	2,457	C254T34FB5	282	575	13.8	92.4	1.25	23.19	C, CN
	1800	254T	170116.60	√	2,808	C254T17FB11	280	575	14.8	92.4	1.25	23.19	C, CN
	1800	254T	LM16400	√	2,824	AF4P15T65	240	575	15.6	91.0	1.25	23.40	A, US
20	3600	256T	170199.60	√	3,004	C256T34FB11	316	575	18.4	92.4	1.25	24.92	C, CN
	1800	256T	170117.60	√	2,974	C256T17FB5	322	575	19.2	93.0	1.25	24.92	C, CN
	1800	256T	LM15919	√	2,485	AF4B20T65	236	575	20.0	91.0	1.25	25.15	A, US
25	3600	284TS	170224.60	√	3,906	C284T34FB6	383	575	22.0	93.0	1.25	24.88	C, CN
	1800	284T	170118.60	√	3,689	C284T17FB6	385	575	23.7	93.6	1.25	26.26	C, CN
	1800	284T	LM16407	C/A	3,531	AF4P25T65	320	575	26.4	92.4	1.25	26.62	A, US
30	3600	286TS	170228.60	√	4,610	C286T34FB6	385	575	26.2	93.0	1.25	26.46	C, CN
	1800	286T	170119.60	√	4,297	C286T17FB6	432	575	29.0	94.1	1.25	27.83	C, CN
	1800	286T	LM19595	C/A	3,971	AF4P30T65Y	585	575	30.5	92.4	1.25	28.12	A, US
40	3600	324TS	170232.60	√	5,750	C324T34FB4	504	575	36.0	93.6	1.25	28.03	C, CN
	1800	324T	170120.60	√	5,708	C324T17FB6	528	575	38.1	94.1	1.25	29.53	C, CN
	1800	324T	LM14408	C/A	8,678	SF4B40T65Y	504	575	42.4	94.1	1.25	28.50	S, US
50	3600	326TS	LM14410	C/A	7,801	SF2B50TS65Y	558	575	45.0	93.0	1.15	28.50	S, US
	3600	326TS	LM14398	C/A	6,745	SF2P50TS65Y	558	575	45.0	92.4	1.15	28.50	S, US
	1800	326T	170121.60	√	6,894	C326T17FB8	587	575	46.7	94.5	1.25	31.02	C, CN
1800	326T	LM14399	√	5,740	SF4P50T65Y	558	575	51.6	93.0	1.25	30.00	S, US	

Green items are Premium Efficient

♥ Note listing on inside back flap

▼ LM Numbers are Lincoln Models

Continued To Next Page

C/A - Check Availability

Other stock 575V motors are available from LEESON through our Canadian facility. Contact LEESON for availability.

Specifications are subject to change without notice

View On-line Technical Information



Explosion Proof Motors

Automotive Duty Motors

Pump Motors

Washguard Motors

Agricultural Motors

HVAC / Fan Motors

Special Voltage Motors

Definite Purpose Motors

Brake Motors

Explosion Proof  
MotorsAutomotive  
Duty MotorsPump  
MotorsWashguard  
MotorsAgricultural  
Duty MotorsHVAC / Fan  
MotorsSpecial Voltage  
MotorsDefinite  
Purpose Motors

Brake Motors

## Special Voltage Motors

### 575 Volt - Three Phase - TEFC

#### Three Phase - TEFC - Rigid Base

HP	RPM 60 Hz	NEMA Frame	▼ Catalog Number	Stock	List Price	Model Number	App. Wgt. (lbs)	Voltage	F. L. Amps @ 575 V	% F.L. Eff.	Service Factor	"C" Dim. (Inches)	♥Notes	
60	3600	364TS	LM18370	C/A	9,674	SF2B60TS65Y	765	575	53.0	95.0	1.25	29.77	S, US	
	3600	364TS	LM18367	C/A	10,079	SF2P60TS65Y	765	575	53.0	93.0	1.25	29.77	S, US	
	1800	364T	170239.60	√	9,806	C364T17FB7	988	575	54.4	95.4	1.25	32.64	C, CN	
	1800	364T	LM18366	C/A	8,305	SF4P60T65Y	765	575	58.0	93.6	1.25	31.90	S, US	
75	3600	365TS	LM18376	C/A	12,465	SF2B75TS65Y	822	575	66.5	95.0	1.25	30.77	S, US	
	3600	365TS	LM18373	C/A	10,675	SF2P75TS65Y	822	575	66.5	93.0	1.25	30.77	S, US	
	1800	365T	170244.60	√	12,237	C365T17FB5	1050	575	68.7	95.8	1.25	33.62	C, CN	
	1800	365T	LM18372	C/A	10,476	SF4P75T65Y	822	575	73.0	94.1	1.25	32.90	S, US	
	3600	405TS	LM18290	C/A	14,605	SF2P100TS65Y	1002	575	85.0	94.1	1.15	35.40	S, US	
	1800	405T	170253.60	C/A	15,217	C405T17FB5	1070	575	89.6	95.4	1.25	37.91	C, CN	
	1800	405T	LM18292	C/A	12,657	SF4P100T65Y	1002	575	97.5	94.5	1.15	38.40	S, US	
	1200	444T	LM15121	C/A	20,945	SF6B100T65Y	1351	575	109.0	95.4	1.15	41.58	S, US	
125	3600	444TS	LM15119	C/A	22,458	SF2B125TS65Y	1351	575	106.0	95.8	1.15	37.49	S, US	
	3600	444TS	LM15078	C/A	17,788	SF2P125TS65Y	1351	575	106.0	94.5	1.15	37.49	S, US	
	1800	444T	LM15079	C/A	16,918	SF4P125T65Y	1351	575	117.0	94.5	1.15	41.58	S, US	
	3600	445TS	LM15084	C/A	22,014	SF2P150TS65Y	1504	575	—	94.5	1.15	—	S, US	
	1800	445T	LM15126	C/A	24,352	SF4B150T65Y	1531	575	136.0	96.2	1.15	43.56	S, US	
	1800	445T	LM15085	C/A	19,624	SF4P150T65Y	1531	575	136.0	95.0	1.15	43.56	S, US	
	200	3600	445TS	LM15122	C/A	35,224	SF2B200TS65Y	1531	575	—	96.2	1.15	—	S, US
	3600	445TS	LM15081	C/A	27,897	SF2P200TS65Y	1504	575	—	95.0	1.15	—	S, US	
1800	445T	LM15123	C/A	29,316	SF4B200T65Y	1531	575	188.0	96.2	1.15	43.58	S, US		
	445T	LM15082	√	24,270	SF4P200T65Y	1531	575	188.0	95.0	1.15	43.58	S, US		
	250	3600	447TS	LM15087	C/A	33,698	SF2P250TS65Y	1812	575	—	95.4	1.00	—	S, US
	1800	447T	LM15130	C/A	34,985	SF4B250T65Y	1812	575	226	95.4	1.15	47.08	S, US	
1800	447T	LM15092	C/A	28,968	SF4P250T65Y	1812	575	231	95.0	1.15	—	S, US		
	300	3600	449TS	LM15138	C/A	52,975	S449F2B300TS65Y	2185	575	—	96.2	1.15	—	S, US
	3600	449TS	LM15098	C/A	41,187	S449F2P300TS65Y	2185	575	—	95.4	1.15	—	S, US	
	1800	447T	LM15129	C/A	38,298	SF4B300T65Y	1812	575	282	96.2	1.15	47.08	S, US	
1800	447T	LM15089	C/A	30,285	SF4P300T65Y	1800	575	282	95.4	1.00	47.08	S, US		

#### Green items are Premium Efficient

♥ Note listing on inside back flap

▼ LM Numbers are Lincoln Models

C/A - Check Availability

Other stock 575V motors are available from LEESON through our Canadian facility.  
Contact LEESON for availability.

Specifications are subject to change without notice



View On-line Technical Information



# Special Voltage Motors

## 575 Volt - TEFC - C Face Less Base

### Three Phase - TEFC - C Face Less Base

HP	RPM 60 Hz	NEMA Frame	Catalog Number	Stock	List Price	Model Number	App. Wgt. (lbs)	Voltage	F. L. Amps @ 575 V	% F.L. Eff.	Service Factor	"C" Dim. (Inches)	♥Notes
1/2	1800	56C	110176.00	√	482	C6T17NC10	20	575	0.8	79.0	1.15	9.94	S, US, 12
3/4	1800	56C	110177.00	√	517	C6T17FC7	21	575	1.1	77.0	1.15	10.81	S, US, 13
1	1800	56C	110204.00	√	553	C6T17FC8	30	575	1.5	77.0	1.15	11.31	S, US, 13
	1800	143TC	G120176.00	√	569	C143T17FC22	32	575	1.2	82.5	1.15	12.25	S, US, 13
1 1/2	1800	56C	111444.00	√	585	C6T17FC39	33	575	2.0	78.5	1.15	11.81	S, US, 13
	1800	145TC	G120177.00	√	616	C145T17FC61	31	575	1.8	84.0	1.15	12.75	S, US, 13
2	3600	56C	111611.00	√	646	C6T34FC26	34	575	2.2	82.5	1.15	12.31	S, US, 13
	1800	145TC	G120178.00	√	657	C145T17FC60	45	575	2.3	84.0	1.15	13.75	S, US, 13
3	1800	182TC	G131498.00	√	756	C182T17FC36	68	575	3.3	87.5	1.15	13.97	S, MX, 13
5	1800	184TC	G131499.00	√	912	C184T17FC47	76	575	5.2	87.5	1.15	14.97	S, MX, 13

Note 12 - TENV

♥ Note listing on inside back flap

Specifications are subject to change without notice

### TEFC - 575 Volt - C Face With Base

### Three Phase - TEFC - C Face With Base

HP	RPM 60 Hz	NEMA Frame	▼ Catalog Number	Stock	List Price	Model Number	App. Wgt. (lbs)	Voltage	F. L. Amps @ 575 V	% F.L. Eff.	Service Factor	"C" Dim. (Inches)	♥Notes
1/2	1800	56C	LM24355	C/A	525	SRF4S0.5TC65	18	575	0.9	70.0	1.15	10.69	S, MX
3/4	1800	56C	LM24354	C/A	560	SRF4S0.75TC65	21	575	1.1	75.5	1.15	11.19	S, MX
1	3600	56C	LM25045	C/A	602	SRF2S1TC65	25	575	1.5	74.0	1.15	11.81	S, US
	1800	56C	LM25046	√	580	SRF4S1TC65	26	575	1.4	77.0	1.15	12.31	S, MX
	1800	143TC	LM25051	C/A	606	SSF4P1TC65	41	575	1.2	82.5	1.25	12.87	S, MX
1 1/2	3600	56C	LM25047	C/A	613	SRF2S1.5TC65	41	575	1.9	80.0	1.15	12.32	S, MX
	1800	56HC	LM25048	√	613	SRF4S1.5TC65	31	575	1.9	80.0	1.15	12.32	S, MX
	1800	145TC	LM24158	√	616	SSF4P1.5TC65	49	575	1.7	84.0	1.15	14.37	S, MX
2	3600	56HC	LM25049	C/A	727	SRF2S2TC65	31	575	2.4	80.0	1.15	12.32	S, US
	1800	56HC	LM25050	√	622	SRF4S2TC65	50	575	2.3	82.5	1.15	13.82	S, US
	1800	145TC	LM24137	C/A	647	SSF4P2TC65	47	575	2.3	84.0	1.15	13.87	S, MX
3	3600	182TC	LM33611	C/A	1,207	AF2B3TC65AP26	95	575	3.1	87.5	1.25	15.19	A, MX
	3600	182TC	LM33612	C/A	965	AF2P3TC65AP26	95	575	3.0	85.5	1.25	14.19	A, MX
	1800	182TC	LM33613	C/A	1,069	AF4B3TC65AP26	95	575	3.2	89.5	1.25	15.19	A, MX
	1800	182TC	LM33614	C/A	874	AF4P3TC65AP26	95	575	3.4	87.5	1.25	14.19	A, MX
5	3600	184TC	LM33615	C/A	1,376	AF2B5TC65AP26	104	575	5.0	88.5	1.25	15.19	A, MX
	3600	184TC	LM33616	C/A	1,153	AF2P5TC65AP26	104	575	5.0	87.5	1.25	15.19	A, MX
	1800	184TC	LM33617	C/A	1,240	AF4B5TC65AP26	104	575	5.0	89.5	1.25	16.19	A, MX
	1800	184TC	LM16593	√	999	AF4P5TC65	104	575	5.2	87.5	1.25	15.19	A, MX
	1200	215TC	LM16594	C/A	1,760	AF6P5TC65	149	575	6.0	87.5	1.25	18.70	A, US

Green items are Premium Efficient

♥ Note listing on inside back flap

▼ LM Numbers are Lincoln Models

Continued To Next Page

C/A - Check Availability

Specifications are subject to change without notice

View On-line Technical Information



Explosion Proof Motors

Automotive Duty Motors

Pump Motors

Washguard Motors

Agricultural Motors

HVAC / Fan Motors

Special Voltage Motors

Definite Purpose Motors

Brake Motors

# Special Voltage Motors

## TEFC - 575 Volt - C Face With Base

### Three Phase - TEFC - C Face With Base

HP	RPM 60 Hz	NEMA Frame	▼ Catalog Number	Stock	List Price	Model Number	App. Wgt. (lbs)	Voltage	F. L. Amps @ 575 V	% F.L. Eff.	Service Factor	"C" Dim. (Inches)	♥Notes
7 1/2	3600	213TC	LM17186	C/A	1,668	AF2B7.5TC65	138	575	7.2	91.0	1.25	17.20	A, US
	3600	213TC	LM16595	✓	1,459	AF2P7.5TC65	175	575	7.2	88.5	1.25	17.20	A, US
	1800	213TC	LM17187	C/A	1,608	AF4B7.5TC65	138	575	8.0	91.0	1.25	19.70	A, US
10	1800	213TC	LM16596	C/A	1,442	AF4P7.5TC65	127	575	8.0	89.5	1.25	19.70	A, US
	3600	215TC	LM17189	C/A	2,083	AF2B10TC65	149	575	9.4	91.0	1.25	19.61	A, US
	3600	215TC	LM16598	C/A	1,904	AF2P10TC65	210	575	9.4	89.5	1.25	19.61	A, US
15	1800	215TC	LM17190	C/A	2,006	AF4B10TC65	149	575	10.8	91.0	1.25	18.70	A, US
	1800	215TC	LM16599	✓	1,528	AF4P10TC65	200	575	10.8	89.5	1.25	18.70	A, US
	3600	254TC	LM17192	C/A	2,746	AF2B15TC65	221	575	13.8	91.7	1.25	23.19	A, US
20	3600	254TC	LM16601	C/A	2,553	AF2P15TC65	185	575	13.8	90.2	1.25	23.19	A, US
	1800	254TC	LM17193	C/A	2,474	AF4B15TC65	221	575	15.6	92.4	1.25	23.40	A, US
	1800	254TC	LM16602	✓	2,220	AF4P15TC65	260	575	15.6	91.0	1.25	23.40	A, US
25	3600	256TC	LM17195	C/A	3,244	AF2B20TC65	248	575	18.8	91.7	1.25	24.24	A, US
	3600	256TC	LM16604	C/A	2,774	AF2P20TC65	248	575	18.8	90.2	1.25	24.24	A, US
	1800	256TC	LM17196	C/A	3,072	AF4B20TC65	248	575	21.0	93.0	1.25	25.15	A, US
30	1800	256TC	LM16605	✓	2,613	AF4P20TC65	300	575	20.0	91.0	1.25	25.15	A, US
	3600	284TSC	LM17198	C/A	4,544	AF2B25TSC65	370	575	22.8	93.0	1.25	25.12	A, US
	3600	284TSC	LM16607	C/A	3,749	AF2P25TSC65	370	575	22.8	91.0	1.25	25.12	A, US
40	1800	284TC	LM17199	C/A	4,118	AF4B25TC65	370	575	26.4	94.1	1.25	26.62	A, US
	1800	284TC	LM16608	C/A	3,541	AF4P25TC65	370	575	26.4	92.4	1.25	26.62	A, US
	3600	286TSC	LM20087	C/A	5,075	AF2B30TSC65Y	415	575	26.4	93.0	1.25	26.62	A, US
50	3600	286TSC	LM19596	C/A	4,375	AF2P30TSC65Y	415	575	28.0	91.0	1.25	26.62	A, US
	1800	286TC	LM20088	C/A	5,352	AF4B30TC65Y	415	575	30.0	94.5	1.25	28.12	A, US
	1800	286TC	LM19597	✓	4,190	AF4P30TC65Y	415	575	30.5	92.4	1.25	28.12	A, US
60	3600	324TSC	LM14561	C/A	6,508	SF2B40TSC65Y	514	575	36.0	94.1	1.25	28.03	S, US
	3600	324TSC	LM14549	C/A	5,675	SF2P40TSC65Y	514	575	36.0	91.7	1.25	28.03	S, US
	1800	324TC	LM14562	C/A	6,270	SF4B40TC65Y	514	575	42.4	94.1	1.25	28.50	S, US
75	1800	324TC	LM14550	C/A	5,475	SF4P40TC65Y	518	575	42.4	93.0	1.25	28.50	S, US
	3600	326TSC	LM14564	C/A	8,162	SF2B50TSC65Y	568	575	45.0	94.1	1.25	28.50	S, US
	3600	326TSC	LM14552	✓	7,109	SF2P50TSC65Y	568	575	45.0	92.4	1.25	28.50	S, US
100	1800	326TC	LM14565	C/A	7,453	SF4B50TC65Y	568	575	51.6	95.0	1.25	30.00	S, US
	1800	326TC	LM14553	C/A	6,112	SF4P50TC65Y	568	575	51.6	93.0	1.25	30.00	S, US
	3600	364TSC	LM20037	C/A	10,252	SF2B60TSC65Y	777	575	53.0	95.0	1.25	29.77	S, US
150	3600	364TSC	LM19600	C/A	8,861	SF2P60TSC65Y	777	575	53.0	93.0	1.25	29.77	S, US
	1800	364TC	LM20038	C/A	10,680	SF4B60TC65Y	778	575	58.0	95.0	1.25	31.90	S, US
	1800	364TC	LM19603	C/A	8,897	SF4P60TC65Y	778	575	58.0	93.6	1.25	31.90	S, US
200	3600	365TSC	LM20040	C/A	13,045	SF2B75TSC65Y	834	575	66.5	95.0	1.25	30.77	S, US
	3600	365TSC	LM19602	C/A	11,254	SF2P75TSC65Y	834	575	66.5	93.0	1.25	30.77	S, US
	1800	365TC	LM20041	C/A	12,935	SF4B75TC65Y	834	575	73.0	95.0	1.15	32.90	S, US
250	1800	365TC	LM15921	C/A	11,055	SF4P75TC65Y	835	575	73.0	94.1	1.25	32.90	S, US
	3600	405TSC	LM20043	C/A	18,202	SF2B100TSC65Y	1018	575	84.0	95.8	1.15	33.87	S, US
	3600	405TSC	LM19605	C/A	15,292	SF2P100TSC65Y	1018	575	85.0	93.6	1.15	33.87	S, US
300	1800	405TC	LM20044	C/A	16,269	SF4B100TC65Y	1001	575	97.5	95.4	1.15	36.87	S, US
	1800	405TC	LM19606	C/A	13,361	SF4P100TC65Y	1018	575	96.0	94.5	1.15	36.87	S, US

Green items are Premium Efficient

♥ Note listing on inside back flap

▼ LM Numbers are Lincoln Models

C/A - Check Availability

Specifications are subject to change without notice



View On-line Technical Information



# Special Voltage Motors

## 575 Volt Motors - Drip-Proof - Rigid Base



### Three Phase - Drip-Proof - Rigid Base

HP	RPM 60 Hz	NEMA Frame	▼ Catalog Number	Stock	List Price	Model Number	App. Wgt. (lbs)	Voltage	F. L. Amps @ 575 V	% F.L. Eff.	Service Factor	"C" Dim. (Inches)	♥Notes
1/3	1800	56	LM25054	D	360	SRD4S0.33T65	15	575	0.6	65.5	1.15	9.97	S, MX
	1800	56	LM34061	✓	464	SRD4B0.33T65	23	575		73.4	1.15		S, MX
1/2	1800	56	LM24161	D	416	SRD4S0.5T65	17	575	0.9	70.0	1.25	10.47	S, MX
	1800	56	LM34062	✓	537	SRD4B0.5T65	26	575		78.2	1.25		S, MX
3/4	1800	56	LM25057	D	460	SRD4S0.75T65	20	575	1.2	75.5	1.15	10.44	S, MX
	1800	56	LM34063	C/A	593	SRD4B0.75T65	29	575		81.1	1.15		S, MX
1	3600	56	LM25058	D	493	SRD2S1T65	24	575	1.5	74.0	1.25	10.44	S, US
	3600	56	LM34064	C/A	666	SRD2B1T65	27	575		77.0	1.25		S, US
1	1800	56	LM25059	D	479	SRD4S1T65	23	575	1.5	77.0	1.15	10.94	S, US
	1800	56	LM34065	✓	724	SRD4B1T65	33	575		83.5	1.15		S, US
1 1/2	3600	56	LM25060	D	553	SRD2S1.5T65	23	575	2.0	80.0	1.15	10.44	S, US
	3600	56	LM34066	C/A	713	SRD2B1.5T65	35	575		84.0	1.15		S, US
1	1800	56H	LM25061	D	508	SRD4S1.5T65	28	575	1.9	80.0	1.15	10.94	S, MX
	1800	56H	LM34067	✓	750	SRD4B1.5T65	37	575		86.5	1.15		S, MX
2	3600	56H	LM25062	D	646	SRD2S2T65	25	575	2.5	80.0	1.15	10.44	S, US
	3600	56H	LM34068	✓	833	SRD2B2T65	41	575		85.5	1.15		S, US
1	1800	56H	LM25063	D	626	SRD4S2T65	36	575	2.5	81.5	1.15	11.94	S, US
	1800	56H	LM34069	✓	848	SRD4B2T65	42	575		86.5	1.15		S, US
3	3600	145T	LM25068	C/A	644	SSD2P3T65	33	575	—	84.0	1.25	—	S, US
	1800	182T	LM24227	C/A	620	SSD4P3T65	83	575	3.0	86.5	1.25	13.72	S, MX
5	3600	182T	LM25069	C/A	722	SSD2P5T65	88	575	—	86.5	1.25	—	S, MX
	1800	184T	LM25070	C/A	691	SSD4P5T65	87	575	5.3	87.5	1.25	14.22	S, MX
7 1/2	3600	184T	LM25071	✓	994	SSD2P7.5T65	88	575	7.1	87.5	1.15	14.72	S, MX
	1800	213T	LM33247	C/A	976	SSD4P7.5T65	121	575	—	88.5	1.25	—	S, MX

Green items are Premium Efficient and comply with SMR 2015

Continued To Next Page

▼ LM Numbers are Lincoln Models

D = To be discontinued when inventory is depleted

C/A - Check Availability

Specifications are subject to change without notice

♥ Note listing on inside back flap

Please view our on-line catalog for updated information that was unavailable at the time of this printing.

View On-line Technical Information



Explosion Proof Motors

Automotive Duty Motors

Pump Motors

Washguard Motors

Agricultural Motors

HVAC / Fan Motors

Special Voltage Motors

Definite Purpose Motors

Brake Motors



# Special Voltage Motors

## 575 Volt Motors - Drip-Proof - Rigid Base

### Three Phase - Drip-Proof - Rigid Base

HP	RPM 60 Hz	NEMA Frame	▼ Catalog Number	Stock	List Price	Model Number	App. Wgt. (lbs)	Voltage	F. L. Amps @ 575 V	% F.L. Eff.	Service Factor	"C" Dim. (Inches)	♥Notes
10	1800	215T	LM24231	√	1,197	SSD4P10T65	138	575	10.0	89.5	1.25	17.29	S, MX
15	1800	254T	LM24219	C/A	1,732	SSD4P15T65	215	575	15.3	91.0	1.25	22.32	S, US
20	1800	256T	LM24232	√	2,175	SSD4P20T65	233	575	20.8	91.0	1.25	22.32	S, US
25	1800	284T	LM29581	C/A	2,950	CCD4P25T65Y	350	575	24.4	91.7	1.25	23.49	C, US
30	1800	286T	LM29865	C/A	3,422	CCD4P30T65Y	400	575	28.8	92.4	1.25	24.99	C, US
40	1800	324T	LM14402	C/A	4,866	SD4P40T65Y	469	575	42.5	93.0	1.25	25.82	S, US
50	1800	326T	LM14405	√	5,198	SD4P50T65Y	522	575	52.0	93.0	1.25	27.32	S, US
60	1800	364T	LM18378	C/A	7,325	SD4P60T65Y	712	575	58	93.6	1.25	28.40	S, US
75	1800	365T	LM18384	C/A	7,984	SD4P75T65Y	763	575	75	94.1	1.25	29.40	S, US
100	1800	404T	LM18298	C/A	8,484	SD4P100T65Y	882	575	96	94.1	1.25	31.81	S, US
125	1800	405T	LM18306	C/A	9,769	SD4P125T65Y	958	575	152	95.4	1.25	33.31	S, US

### Green items are Premium Efficient

♥ Note listing on inside back flap

▼ LM Numbers are Lincoln Models

C/A - Check Availability

Specifications are subject to change without notice



View On-line Technical Information



# Special Voltage Motors

## 200/400 Volt - Drip-Proof - Rigid Base



### Three Phase - Drip-Proof - Rigid Base

HP	RPM 60 Hz	NEMA Frame	▼ Catalog Number	Stock	List Price	Model Number	App. Wgt. (lbs)	Voltage	F. L. Amps @ 200 V	% F.L. Eff.	Service Factor	"C" Dim. (Inches)	♥Notes
3/4	1800	S56	LM24163	D	433	SRD3S0.75T62	23	200/400	3.2	75.5	1.25	10.97	S, MX
1	1800	143T	LM33053	C/A	562	SD4P1T62	32	200/400	3.6	82.5	1.15	12.49	S, MX
1 1/2	1800	145T	LM33056	C/A	588	SSD4PT62	35	200/400	—	84.0	1.15	—	S, MX
2	1800	145T	LM33057	C/A	604	SSD4P2T62	48	200/400	6.7	84.0	1.15	12.99	S, MX
3	1800	182T	LM33059	C/A	686	SSD4P3T62	75	200/400	10.1	86.5	1.15	12.69	S, MX
5	1800	184T	G131500.00	√	709	C184T17DB78	62	200-208/400-416	15.4	86.0	1.15	13.19	S, MX
	1800	182T	LM33062	C/A	793	SSD4P5T62	82	200/400	15.2	87.5	1.15	13.19	S, MX
7 1/2	1800	213T	G141124.00	√	1,010	C213T17DB15	133	200-208/400-416	22.0	84.0	1.15	17.09	S, MX
10	1800	215T	G140004.00	√	1,234	C215T17DB33	138	200-208/400-416	32.0	86.5	1.15	15.76	S, MX
	1800	215T	LM32681	C/A	1,483	SSD4P10T62	120	200/400	28.8	91.7	1.15	18.54	S, MX
15	1800	254T	LM26334	√	1,892	SSD4P15T62	164	200/400	44.0	91.0	1.15	22.32	S, US
20	1800	256T	LM32675	C/A	2,258	SSD4P20T62	200	200/400	57.5	91.0	1.15	22.32	S, US
25	1800	284T	LM33067	C/A	3,738	SD4P25T62	278	200/400	70.0	91.7	1.15	24.93	S, US
30	1800	286T	LM32670	√	3,983	SD4P30T62	325	200/400	87.5	92.4	1.15	24.99	S, US
40	1800	324T	LM32680	√	8,626	SD4P40T62	378	200/400	147.0	93.0	1.15	25.82	S, US
50	1800	326T	LM33070	C/A	4,694	SD4P60T62	444	200/400	150.0	93.0	1.15	27.32	S, US
60	1800	364T	LM33072	C/A	6,404	SD4P60T62	575	200/400	—	93.6	1.15	—	S, US
75	1800	365T	LM33074	C/A	6,696	SD4P75T62	660	200/400	211.0	94.1	1.15	29.40	S, US

▼ LM Numbers are Lincoln Models

C/A - Check Availability

D = Item to be discontinued when stock is depleted

Specifications are subject to change without notice

♥ Note listing on inside back flap

View On-line Technical Information



Explosion Proof  
Motors

Automotive  
Duty Motors

Pump  
Motors

Washguard  
Motors

Agricultural  
Motors

HVAC / Fan  
Motors

Special Voltage  
Motors

Definite  
Purpose Motors

Brake Motors

Explosion Proof  
Motors

## Special Voltage Motors

### 200/400 Volt - TEFC - Rigid Base

Automotive  
Duty Motors

### Three Phase - TEFC - Rigid Base

HP	RPM 60 Hz	NEMA Frame	▼ Catalog Number	Stock	List Price	Model Number	App. Wgt. (lbs)	Voltage	F. L. Amps @ 200 V	% F.L. Eff.	Service Factor	"C" Dim. (Inches)	♥Notes
1	1800	56	110255.00	✓	530	C6T17FB8	30	200-208	4.4	77.0	1.15	11.31	S, US
	1800	143T	G120047.00	C/A	579	C143T17FB28	32	200-208	4.4	77.0	1.15	12.75	S, US
1 1/2	1800	145T	G120032.00	✓	587	C145T17FB88	35	200-208	5.6	80.0	1.15	12.75	S, US
2	1800	145T	G120034.00	✓	621	C145T17FB89	38	200-208	7.2	81.5	1.15	12.75	S, US
3	3600	182T	LM33621	C/A	964	AF2P3T62AP26	73	200/400	—	85.5	1.15	—	A, MX
	1800	182T	G131465.00	✓	725	C182T17FB51	82	200-208/400-416	10.0	84.0	1.15	12.96	S, MX
5	1800	182T	LM33622	C/A	882	AF4P3T62AP26	78	200/400	9.1	87.5	1.15	14.96	A, MX
	1800	184T	G131466.00	✓	836	C184T17FB63	63	200-208/400-416	15.4	86.0	1.15	13.96	S, MX
5	1800	184T	LM26285	C/A	1,002	AAF4P5T62	78	200/400	15.0	87.5	1.25	15.19	A, US
	1800	184T	LM33624	C/A	1,002	AAF4P5T62AP26	78	200/400	15.0	87.5	1.25	15.19	A, MX
7 1/2	1800	215T	LM33093	C/A	1,589	AF6P5T62	122	200/400	17.3	87.5	1.15	18.70	A, US
	1800	213T	G141123.00	✓	1,069	C213T17FB19	144	200-208/400-416	23.0	87.0	1.15	17.58	S, MX
10	3600	215T	LM33099	C/A	1,898	AF2P10T62	124	200/400	27.6	89.5	1.15	19.70	A, US
	1800	215T	G140013.00	✓	1,299	C215T17FB29	168	200-208/400-416	29.6	87.5	1.15	18.21	S, MX
15	1800	254T	LM32691	C/A	2,489	AF4P15T62	152	200/400	43.5	91.0	1.15	23.52	A, US
20	1800	256T	LM33103	C/A	2,827	AF4P20T62	202	200/400	58.5	91.0	1.15	14.87	A, US

▼ LM Numbers are Lincoln Models

♥ Note listing on inside back flap

C/A - Check Availability

Continued To Next Page

Specifications are subject to change without notice

Agricultural  
Duty MotorsHVAC / Fan  
MotorsSpecial Voltage  
MotorsDefinite  
Purpose Motors

Brake Motors



View On-line Technical Information



# Special Voltage Motors

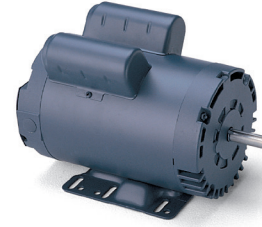
## 50 Hertz Motors - Single Phase - Rigid Base

### General Specifications:

50 Hz single phase designs produce full rated HP on 50 Hz power supply. Designed for general purpose applications.

### Features:

- High efficiency energy saving designs
- Centrifugal switch designed for 50 Hz service
- High torque



### Single Phase - Drip-Proof - Rigid Base - IP 22

HP	RPM 50 Hz	NEMA Frame	Catalog Number	Stock	List Price	Model Number	App. Wgt. (lbs)	Voltage	F. L. Amps @ 220 V	Service Factor	"C" Dim. (Inches)	♥Notes
1/3	1500	56	110394.00	√	480	C6C14DB5	22	110/220	3.2	1.35	9.88	S, US
1/2	3000	56	113901.00	√	429	C6C28DB24	25	110/220	3.8	1.25	10.34	S, US
	1500	56	110395.00	√	608	C6C14DB6	25	110/220	4.1	1.25	10.38	S, US
3/4	3000	56	113902.00	√	538	C6C28DB25	27	110/220	5.6	1.25	10.34	S, US
	1500	56	110396.00	√	730	C6C14DB7	30	110/220	5.9	1.25	10.88	S, US
1	3000	56	113903.00	√	598	C6C28DB26	31	110/220	6.6	1.25	10.84	S, US
	1500	56H	110397.00	√	804	C6C14DB8	35	110/220	6.4	1.15	11.88	S, US, 6
1 1/2	3000	56H	113904.00	√	767	C6C28DB27	37	110/220	8.6	1.15	11.84	S, US
	1500	56H	110398.00	√	907	C6K14DB1	43	110/220	8.4	1.15	12.35	S, US, 6, 53
2	3000	56H	113905.00	√	940	C6C28DB28	42	110/220	10.7	1.15	12.34	S, US
	1500	182T	131553.00	√	1,090	C182C14DB3	70	220	11.8	1.15	13.69	S, US
3	3000	56H	113937.00	√	1,112	C6K28DB5	47	220	12.4	1.15	12.84	S, US
	1500	184T	131554.00	√	1,246	C184C14DB2	80	220	16.8	1.15	14.69	S, MX
5	1500	184T	131555.00	√	2,548	C184K14DB9	95	220	23.2	1.15	15.69	S, MX, 53

Specifications are subject to change without notice

♥ Note listing on inside back flap

View On-line Technical Information



Explosion Proof  
Motors

Automotive  
Duty Motors

Pump  
Motors

Washguard  
Motors

Agricultural  
Motors

HVAC / Fan  
Motors

Special Voltage  
Motors

Definite  
Purpose Motors

Brake Motors

Explosion Proof  
MotorsAutomotive  
Duty MotorsPump  
MotorsWashguard  
MotorsAgricultural  
Duty MotorsHVAC / Fan  
MotorsSpecial Voltage  
MotorsDefinite  
Purpose Motors

Brake Motors

## Special Voltage Motors

### 50 Hertz Motors - Single Phase - Rigid Base



#### Single Phase - TEFC - Rigid Base - IP54

HP	RPM 50 Hz	NEMA Frame	Catalog Number	Stock	List Price	Model Number	App. Wgt. (lbs)	Voltage	F. L. Amps @ 220 V	Service Factor	"C" Dim. (Inches)	♥ Notes
1/3	3000	56	113916.00	√	443	C6C28FB25	25	110/220	3.2	1.00	10.81	S, US
	1500	56	110423.00	√	560	C6C14FB6	24	110/220	3.2	1.00	10.81	S, US
	1500	56	113908.00	√	566	M6C14FB22	26	110/220	3.2	1.00	10.81	S, US
1/2	3000	56	113917.00	√	473	C6C28FB26	27	110/220	3.8	1.00	11.31	S, US
	1500	56	110064.00	√	642	C6C14FB1	25	110/220	4.1	1.00	11.31	S, US
	1500	56	113909.00	√	642	M6C14FB23	29	110/220	4.1	1.15	11.31	S, US
3/4	3000	56	113918.00	√	538	C6C28FB27	29	110/220	5.6	1.00	11.31	S, US
	1500	56	110065.00	√	735	C6C14FB2	32	110/220	5.9	1.00	11.81	S, US
	1500	56	113910.00	√	762	M6C14FB24	32	110/220	5.9	1.00	11.81	S, US
1	3000	56	113919.00	√	623	C6C28FB28	32	110/220	6.6	1.00	11.81	S, US
	1500	56H	110066.00	√	884	C6C14FB3	38	110/220	6.4	1.00	12.81	S, US, 6
	1500	56	113911.00	√	884	M6C14FB25	34	110/220	6.4	1.00	12.31	S, US
1 1/2	3000	56H	113920.00	√	821	C6C28FB29	44	110/220	8.0	1.00	13.31	S, US
	1500	56H	110424.00	√	1,002	C6K14FB1	47	110/220	8.6	1.00	13.31	S, US, 6, 53
	1500	56H	113929.00	√	913	P6K14FB9	49	110/220	8.6	1.00	13.31	S, US, 6, 53
2	3000	56HZ	113928.00	√	993	C6C28FB24	44	110/220	10.7	1.00	13.76	S, US, 3
	1500	182T	131556.00	√	1,501	C182C14FB6	95	220	11.2	1.00	15.96	S, MX
	1500	182T	131600.00	C/A	1,482	P182C14FB5	71	220	12.0	1.00	14.96	S, MX
3	3000	145T	121070.00	√	1,222	C145K28FB6	50	220	12.4	1.00	12.84	S, US, 53
	3000	56H	113936.00	√	1,222	C6K28FB2	48	220	12.4	1.00	13.81	S, US, 53
	1500	184T	131557.00	√	2,144	C184C14FB6	98	220	15.9	1.00	16.96	S, MX
5	1500	184T	131601.00	√	2,112	P184C14FB7	98	220	15.9	1.00	16.96	S, MX
	3000	184T	131638.00	√	1,414	C184K28FB2	98	220	20.5	1.00	17.46	S, MX, 53
	1500	184T	131578.00	√	2,721	C184K14FB5	103	220	21.0	1.00	17.46	S, MX, 53
	1500	213TZ	140475.00	C/A	2,734	P213K14FB1	163	220	24.5	1.00	18.71	S, MX, 53

C/A - Check Availability

♥ Note listing on inside back flap

Specifications are subject to change without notice



View On-line Technical Information



# Special Voltage Motors

## 50 Hertz Motors - Single Phase

### Single Phase - Drip-Proof - Resilient Base - IP22

HP	SYN RPM 50 Hz	NEMA Frame	Catalog Number	Stock	List Price	Model Number	App. Wgt. (lbs)	Voltage	F. L. Amps @ 220 V	Service Factor	"C" Dim. (Inches)	♥Notes
1/3	3000	56	114222.00	√	376	C6C28DR1	24	110/220	3.2	1.35	10.82	S, US
	1500	56	114223.00	√	491	C6C14DR18	24	110/220	3.2	1.35	10.81	S, US
1/2	3000	56	114224.00	C/A	439	C6C28DR2	26	110/220	3.8	1.25	11.32	S, US
	1500	56	114225.00	√	612	C6C14DR19	27	110/220	4.1	1.25	11.31	S, US
3/4	3000	56	114226.00	√	533	C6C28DR3	28	110/220	5.6	1.25	11.32	S, US
	1500	56	114227.00	√	731	C6C14DR16	31	110/220	5.9	1.25	11.81	S, US
1	3000	56	114228.00	C/A	606	C6C28DR4	31	110/220	6.6	1.25	11.82	S, US
	1500	56	114229.00	C/A	806	C6C14DR17	35	110/220	6.4	1.15	12.31	S, US
1 1/2	1500	56H	114231.00	√	905	C6K14DR12	42	110/220	8.4	1.15	13.32	S, US, 53
2	1500	56H	114233.00	√	1,103	C6K14DR13	49	220	9.6	1.15	13.82	S, US

C/A - Check Availability

♥ Note listing on inside back flap

Specifications are subject to change without notice

### Single Phase - TEFC - C Face Less Base - IP54

HP	RPM 50 Hz	NEMA Frame	Catalog Number	Stock	List Price	Model Number	App. Wgt. (lbs)	Voltage	Over-load Prot.	F. L. Amps @ 220 V	Service Factor	"C" Dim. (Inches)	♥Notes
1/3	1500	56C	113921.00	√	576	M6C14FC5	22	110/220	Man.	3.2	1.00	10.81	S, US
1/2	3000	56C	113912.00	√	495	C6C28FC3	25	110/220	None	3.8	1.00	11.31	S, US
	1500	56C	113922.00	√	660	M6C14FC6	29	110/220	Man.	4.1	1.15	11.31	S, US
3/4	3000	56C	113913.00	√	550	C6C28FC4	28	110/220	None	5.6	1.00	11.31	S, US
	1500	56C	113923.00	√	755	M6C14FC7	31	110/220	Man.	5.9	1.00	11.81	S, US
1	3000	56C	113914.00	√	679	C6C28FC5	32	110/220	None	6.6	1.00	11.81	S, US
	1500	56C	113924.00	√	795	M6C14FC8	34	110/220	Man.	6.4	1.00	12.31	S, US
1 1/2	3000	56C	113915.00	√	883	C6C28FC6	43	110/220	None	8.0	1.00	13.31	S, US
	1500	56C	113925.00	√	963	P6K14FC4	42	110/220	Man.	8.6	1.00	13.31	S, US, 53
2	3000	145TC	120990.00	√	1,019	C145K28FC2	47	110/220	None	8.6	1.15	13.75	S, US, 53
	1500	182TC	131599.00	C/A	1,518	P182C14FC2	70	220	Man.	12.0	1.00	14.97	S, MX

C/A = Check Availability

♥ Note listing on inside back flap

Specifications are subject to change without notice

View On-line Technical Information



Explosion Proof Motors

Automotive Duty Motors

Pump Motors

Washguard Motors

Agricultural Motors

HVAC / Fan Motors

Special Voltage Motors

Definite Purpose Motors

Brake Motors

## Special Voltage Motors

### 50 Hertz Motors - Three Phase

#### General Specifications:

Totally enclosed fan cooled,  
12-lead motors designed specifically for 50 Hz service. These motors are intended for equipment built in North America and destined for use in 50 Hz service areas of the world.



#### Features:

- Suitable for 220/380 volt, 50 Hz, or 440 volt, 50 Hz, three phase power
- Torques exceed NEMA performance for Design B motors
- Construction meets IP 54 protection standards
- Class F insulation

#### Three Phase - TEFC - Rigid Base

kW/HP	RPM 50 Hz	NEMA Frame	Catalog Number	Stock	List Price	Model Number	App. Wgt. (lbs)	Voltage	F. L. Amps @ 380 V	% F.L. Eff.	Service Factor	"C" Dim. (Inches)	♥Notes
0.18/1/4	1500	48	102685.00	✓	466	C4T14FB4	19	220/380/440	1.0	56.0	1.15	9.06	S, MX
0.25/1/3	3000	48	102686.00	✓	465	C4T28FB2	19	220/380/440	0.8	60.0	1.15	9.93	S, US
	1500	48	102688.00	✓	560	C4T14FB5	19	220/380/440	1.1	65.0	1.15	9.31	S, MX
	1500	S56	102183.00	✓	524	C4T14FH1	19	220/380/440	1.1	65.0	1.15	9.69	S, MX
0.37/1/2	3000	48	102690.00	C/A	538	C4T28FB1	20	220/380/440	1.0	69.0	1.15	10.43	S, US
	1500	48	102692.00	✓	633	C4T14FB3	20	220/380/440	1.4	72.0	1.15	9.81	S, MX
	1500	S56	102693.00	✓	585	C4T14FH2	20	220/380/440	1.4	72.0	1.15	10.19	S, MX
	1500	56	114304.00	✓	630	C6T14NB1	25	220/380/440	1.0	78.0	1.15	10.38	S, US, 12
0.55/3/4	3000	56	114306.00	✓	570	C6T28FB4	24	220/380/440	1.8	72.0	1.15	10.81	S, US
	1500	56	114307.00	✓	671	C6T14FB7	27	220/380/440	1.9	74.0	1.15	11.31	S, US
0.75/1	3000	56	114308.00	✓	682	C6T28FB5	26	220/380/440	2.4	71.0	1.15	11.31	S, US
	1500	56	114888.00	✓	678	C6T14FB8	28	220/380/440	2.0	77.0	1.15	11.31	S, US
	1500	143T	121096.00	✓	678	C143T14FB2	35	220/380/440	2.0	77.0	1.15	12.75	S, US
1.1/1 1/2	3000	145T	121097.00	C/A	702	C145T28FB4	34	220/380/440	2.9	80.0	1.15	12.76	S, US
	1500	145T	121093.00	✓	702	C145T14FB13	40	220/380/440	3.3	75.5	1.15	12.75	S, US
1.5/2	3000	145T	121094.00	C/A	760	C145T28FB5	42	220/380/440	3.6	80.0	1.15	12.76	S, US
	1500	145T	121095.00	✓	795	C145T14FB14	40	220/380/440	3.7	81.5	1.15	13.25	S, US
2.2/3	3000	182T	131480.00	✓	981	C182T28FB3	58	220/380/440	4.8	82.5	1.15	13.46	S, MX
	1500	182T	131459.00	✓	939	C182T14FB5	64	220/380/440	4.7	84.0	1.15	13.46	S, MX
3.7/5	3000	184T	131481.00	✓	1,155	C184T28FB14	76	220/380/440	7.4	84.0	1.15	14.46	S, MX
	1500	184T	131454.00	✓	1,070	C184T14FB7	82	220/380/440	8.1	85.0	1.00	15.46	S, MX

C/A - Check Availability

Note 12 - TENV

Specifications are subject to change without notice

♥ Note listing on inside back flap



View On-line Technical Information



# Special Voltage Motors

## 50 Hertz Motors - Three Phase



### Three Phase - TEFC - C Face Less Base - IP54 Enclosure Protection

kW/HP	RPM 50 Hz	NEMA Frame	Catalog Number	Stock	List Price	Model Number	App. Wgt. (lbs)	Voltage	F. L. Amps @ 380 V	% F.L. Eff.	Service Factor	"C" Dim. (Inches)	♥ Notes
0.18/1/4	1500	S56C	102184.00	✓	495	C4T14FC2	18	220/380/440	1.0	56.0	1.15	9.44	S, MX
0.25/1/3	3000	S56C	102687.00	✓	489	C4T28FC2	19	220/380/440	0.8	60.0	1.15	10.31	S, US
	1500	S56C	102689.00	✓	535	C4T14FC4	19	220/380/440	1.1	65.0	1.15	9.69	S, MX
	1500	56C	114889.00	✓	573	C6T14FC5	18	220/380/440	1.1	68.0	1.15	10.31	S, US
0.37/1/2	3000	S56C	102691.00	✓	567	C4T28FC1	20	220/380/440	1.0	69.0	1.15	10.81	S, US
	1500	S56C	102694.00	✓	630	C4T14FC3	20	220/380/440	1.4	72.0	1.15	10.19	S, MX
	1500	56C	114891.00	✓	636	C6T14FC4	20	220/380/440	1.2	73.0	1.15	10.81	S, US
	1200	56C	114892.00	✓	702	C6T9FC1	28	220/380/440	1.5	68.0	1.15	11.31	S, US
0.55/3/4	3000	56C	114893.00	✓	570	C6T28FC1	24	220/380/440	1.8	72.0	1.15	10.81	S, US
	1500	56C	114894.00	✓	679	C6T14FC6	27	220/380/440	1.9	74.0	1.15	11.31	S, US
0.75/1	3000	56C	114895.00	✓	686	C6T28FC3	26	220/380/440	2.4	71.0	1.15	11.31	S, US
	1500	56C	114896.00	✓	707	C6T14FC7	28	220/380/440	2.0	77.0	1.15	11.31	S, US
	1500	143TC	121272.00	✓	707	C143T14FC2	31	220/380/440	2.0	77.0	1.15	11.75	S, US
	1200	145TC	121273.00	✓	813	C145T9FC3	39	220/380/440	2.7	73.0	1.15	13.25	S, US
1.1/11/2	3000	143TC	121274.00	C/A	730	C143T28FC1	33	220/380/440	2.9	80.0	1.15	12.25	S, US
	1500	145TC	121275.00	✓	739	C145T14FC6	37	220/380/440	3.3	75.5	1.15	12.75	S, US
1.5/2	3000	145TC	121276.00	✓	731	C145T28FC1	41	220/380/440	3.6	80.0	1.15	12.75	S, US
	1500	145TC	121277.00	✓	796	C145T14FC5	40	220/380/440	3.7	81.5	1.15	13.75	S, US
2.2/3	3000	182TC	131505.00	✓	998	C182T28FC2	59	220/380/440	4.8	82.5	1.15	13.97	S, MX
	1500	182TC	131506.00	✓	926	C182T14FC3	63	220/380/440	4.7	84.0	1.15	13.97	S, MX
3.7/5	3000	184TC	131507.00	✓	1,181	C184T28FC3	75	220/380/440	7.4	84.0	1.15	14.47	S, MX
	1500	184TC	131508.00	✓	1,057	C184T14FC3	82	220/380/440	8.1	85.0	1.00	15.47	S, MX

C/A - Check Availability

♥ Note listing on inside back flap

Specifications are subject to change without notice

View On-line Technical Information



Explosion Proof  
Motors

Automotive  
Duty Motors

Pump  
Motors

Washguard  
Motors

Agricultural  
Motors

HVAC / Fan  
Motors

Special Voltage  
Motors

Definite  
Purpose Motors

Brake Motors



## Special Voltage Motors

### Medium Voltage Motors

#### 2300/4000 Volts - Three Phase - Foot Mount

##### Applications:

Ideally suited for applications requiring heavy duty, large horsepower electric motors. Typical uses include pulp and paper mills, mineral processing, waste management facilities, lumber and wood processing mills, automobile manufacturing plants and other severe duty environments where medium voltage power is available.

##### Features Frames 447T - 449T:

- Full cast iron construction
- Double shielded radial ball bearings
- Designed for direct coupled loads (contact your local Sales office about belted loads)
- Grease fittings with extended grease tubes
- Internal and external epoxy finish
- Premium Class H insulation system
- Front and rear cast iron bearing caps

##### Features Frames 5011 - 5013

- Full cast iron construction
- Double shielded radial ball bearings
- Designed for direct coupled loads (contact your local Sales office about belted loads)
- Grease fittings with extended grease tubes
- Corrosion resistant breather/drains
- Oversized cast iron terminal box
- Internal and external epoxy finish
- Premium Class H insulation system
- Inpro/Seal™ bearing isolators on each end
- Front and rear cast iron bearing caps
- Provision for jacking bolts in all four feet
- Provision for dowel pins in drive end feet
- Grounding points located in terminal box and feet
- 100 ohm platinum winding RTDs as standard on sizes 400 HP and larger

Design ranges include 150 through 350 HP in 4, 6 and 8-pole designs

400 - 500 HP in 4 and 6-pole designs

600 and 700 HP ratings in 4-pole designs

Contact your local sales office for a quote



## 600 Volts and Lower Motors

	LV ODP	LV TEFC	LV DPFV	LV WPI	LV WPII	LV TEFC	LV TEAAC	LV TEWAC
	NEMA			IEC				
Range	15–600 HP	15–700 HP	25–1250 HP	250–3350 HP	250–3350 HP	250–2150 HP	300–2680 HP	250–3350 HP
Voltage	460V	460V	460V	460V	460V	460V	460V	460V
Pole	2-, 4-, 6-, 8-pole	2-, 4-, 6-, 8-pole	2-, 4-, 6-, 8-pole	2-, 4-, 6-, 8-pole	2-, 4-, 6-, 8-pole	2-, 4-, 6-, 8-pole	2-, 4-, 6-pole	2-, 4-, 6-, 8-pole
Frequency	60 and/or 50 Hertz	60 Hertz	60 and/or 50 Hertz	60 Hertz	60 Hertz	60 Hertz	60 Hertz	60 Hertz
Frame	254–510 NEMA	254–5013 NEMA	364–6805 NEMA	355–630 IEC	355–630 IEC	355–560 IEC	355–630 IEC	355–630 IEC
Protection	IP12 & 23	IP55	IP12 & 23	IP23	IP23	IP55	IP44	IP44
Ambient	40° C	40° C	40° C	40° C	40° C	40° C	40° C	40° C
Insulation	Class F	Class H VPI	Class F	Class F VPI	Class F VPI	Class F VPI	Class F VPI	Class F VPI
Construction	Rolled Steel & Cast Iron	Cast Iron	Cast Iron	Fabricated	Fabricated	Cast Iron	Fabricated	Fabricated
Performance	MG1	MG1	MG1	IEC	IEC	IEC	IEC	IEC
Bearings	Anti-Friction	Anti-Friction	Anti-Friction	Anti-Friction	Anti-Friction	Anti-Friction	Anti-Friction	Anti-Friction
Service Factor	1.15	1.15	1.15	1.15	1.15	1.15	1.15	1.15
Inverter	Yes	Yes	Yes	Yes	Yes	Yes	Yes	Yes

## Medium Voltage Motors

	MV ODP	MV TEFC	MV WPI	MV WPII	MV TEFC	MV TEAAC	MV TEWAC
	NEMA		IEC				
Range	125–700 HP	200–750 HP	250–3350 HP	250–3350 HP	250–2410 HP	300–3350 HP	250–3350 HP
Voltage	2300/4000V	2300/4000V	2300/4000V	2300/4000V	2300/4000V	2300/4000V	2300/4000V
Pole	2-, 4-, 6-, 8-pole	2-, 4-, 6-pole	2-, 4-, 6-pole	2-, 4-, 6-pole	2-, 4-, 6-pole	2-, 4-, 6-pole	2-, 4-, 6-, 8-pole
Frequency	60 Hertz	60 Hertz	60 Hertz	60 Hertz	60 Hertz	60 Hertz	60 Hertz
Frame	449T–510U NEMA	5011–5811 NEMA	355–630 IEC	355–630 IEC	355–560 IEC	355–630 IEC	355–630 IEC
Protection	IP23	IP55	IP23	IPW23	IP55	IP44	IP44
Ambient	40° C	40° C	40° C	40° C	40° C	40° C	40° C
Insulation	Class H VPI	Class H VPI	Class F VPI	Class F VPI	Class F VPI	Class F VPI	Class F VPI
Construction	Rolled Steel & Cast Iron	Cast Iron	Fabricated	Fabricated	Cast Iron	Fabricated	Fabricated
Performance	MG1	MG1	IEC	IEC	IEC	IEC	IEC
Bearings	Anti-Friction	Anti-Friction	Anti-Friction	Anti-Friction	Anti-Friction	Anti-Friction	Anti-Friction
Service Factor	1.15	1.15	1.15	1.15	1.15	1.15	1.15
Inverter	Yes	Yes	Yes	Yes	Yes	Yes	Yes

### Special Configurations:

There's more to LEESON large AC induction motor capabilities than what you see here. Contact your local LEESON Electric District Sales Office to discuss your unique application.

#### In some cases:

- HP capability can extend to 5000 HP
- Voltages can extend to 6.6KV & 11KV and higher

#### Available Accessories:

- Stator RTDs
- Bearing RTDs
- Space Heaters
- Vibration Detectors
- Split Sleeve Bearings
- Noise Reduction Packages
- Lightning Arrestors
- Surge Capacitors
- **Ask about other options**



Explosion Proof Motors

Automotive Duty Motors

Pump Motors

Washguard Motors

Agricultural Motors

HVAC / Fan Motors

Special Voltage Motors

Definite Purpose Motors

Brake Motors