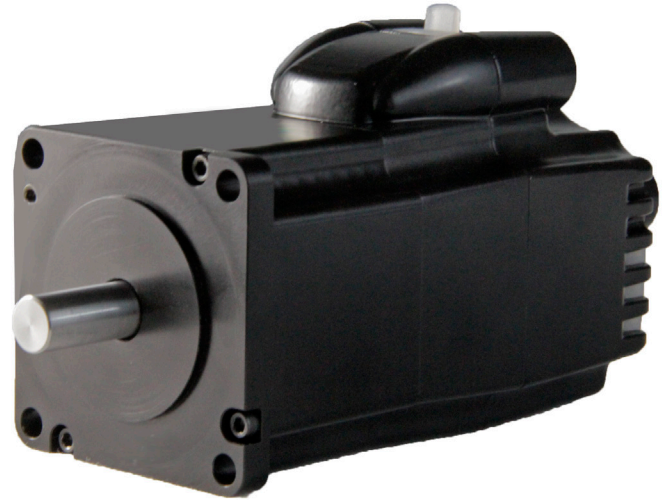


Key Features

- Dual Port Ethernet (no Ethernet switches or hubs required)
- USB interface for programming, configuration and live diagnostics
- RS-485 Half Duplex communications port
 - Modbus Remote Terminal Unit (RTU) Slave (RS-485)
- Full floating-point math and trigonometric functions with 32-bit precision results
- Dual trajectory generators enabling relative and absolute position moves or velocity moves on top of gearing or camming
- Advanced gearing, allowing preset traverse and take-up winding parameters, including dwells and wrap counts
- Advanced camming including cubic spline interpolation and dynamic frequency and amplitude changes
- Virtual-axis mastering into camming through gearing which enables stand-alone; multi-axis coordinated motion
- Programmable and non-programmable protection features (both hardware and software)
- On Board local I/O including:
 - Drive Enable Input
 - Fault Output
 - Travel Limit inputs
 - Differential Encoder bus up to 500k Hz count rate
 - 4 General Use inputs
 - 1 High Speed Input
 - 1 high current output (may be used for external brake)

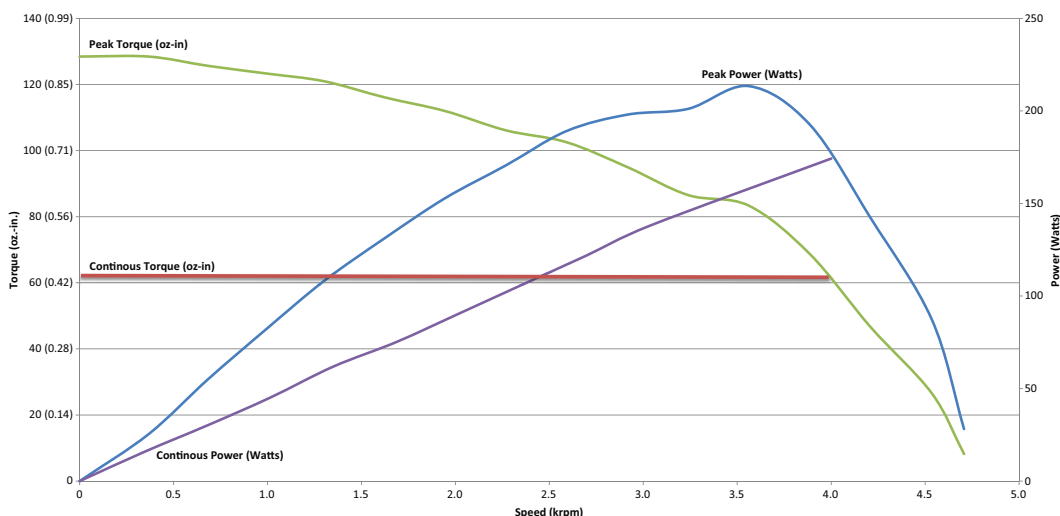


Specifications

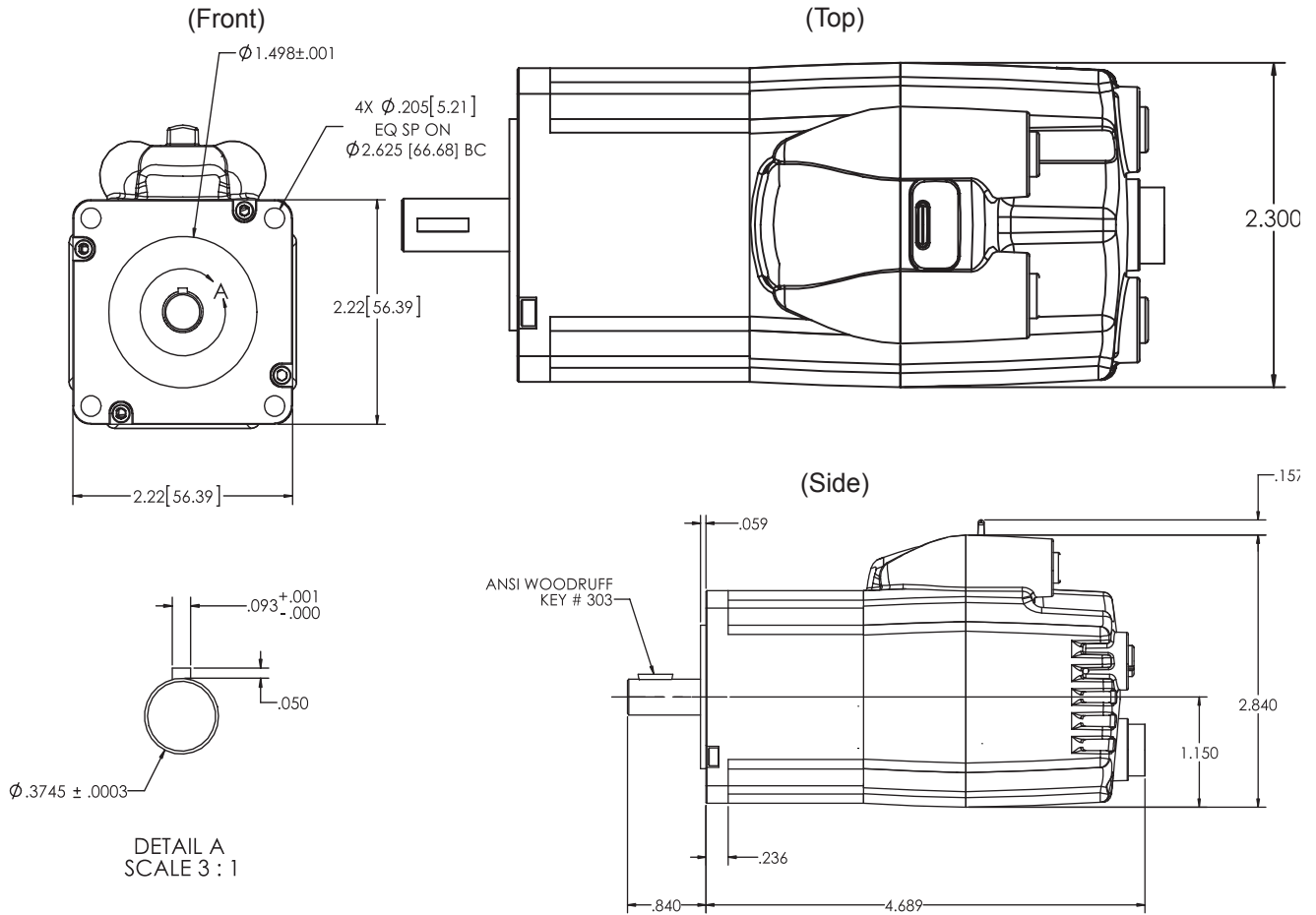
SmartMotor™ Series	SM23166MT-EEC	
Continuous Torque at 48v	68	oz-in
	0.48	N-m
Peak Torque	128	oz-in
	0.90	N-m
Nominal Continuous Power	189	Watt
Nominal Peak Power	213	Watts
No Load Speed	4,700	RPM
Encoder Resolution	4,000	Counts/Rev
Weight	1.7	lb
	0.77	kg
Shaft Diameter	0.375	in
	9.53	mm
Shaft, Radial Load	15.0	lb
	6.80	kg
Shaft, Axial Thrust Load	3.00	lb
	1.36	kg

Power Chart

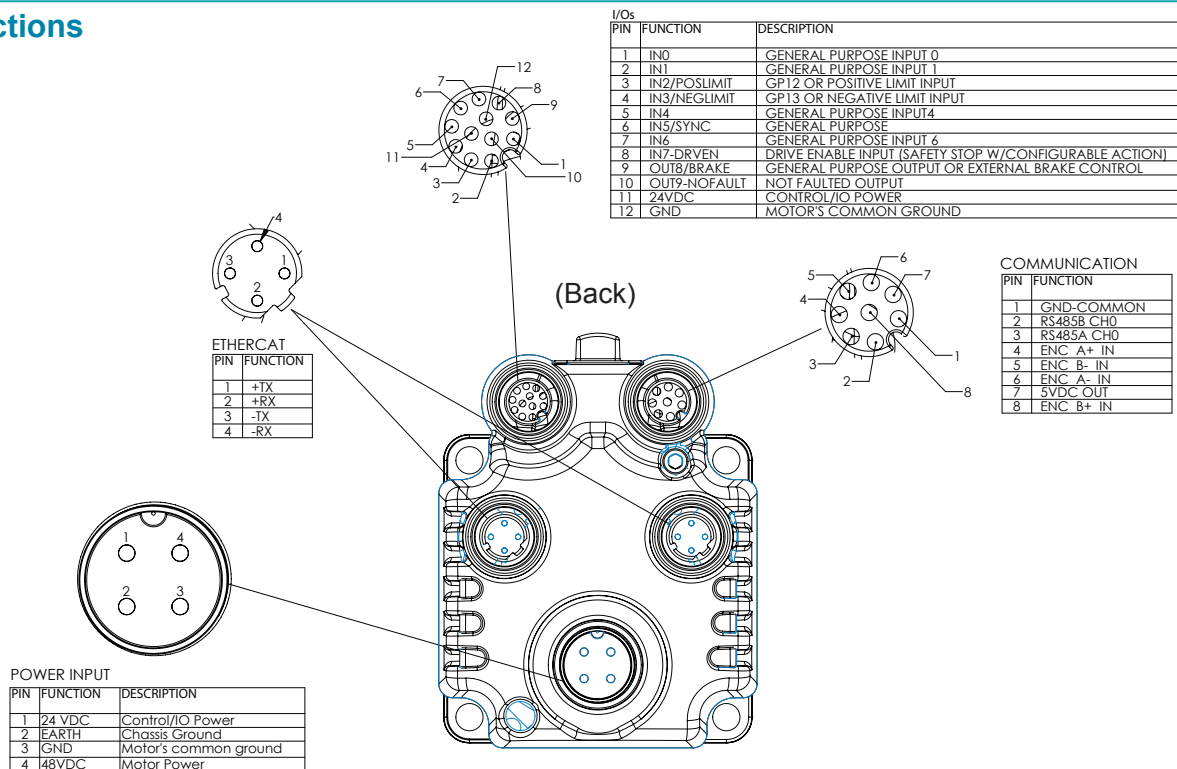
Servo Peak Torque at 48 volts MDC mode – SM23166MT-EEC motor Torque vs. Speed, 10% Derated Torque (85°C)



Dimensional Information

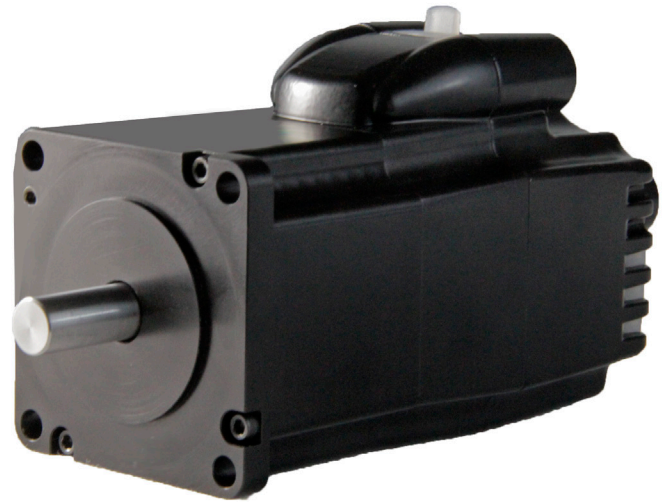


Connections



Key Features

- Dual Port Ethernet (no Ethernet switches or hubs required)
- USB interface for programming, configuration and live diagnostics
- RS-485 Half Duplex communications port
 - Modbus Remote Terminal Unit (RTU) Slave (RS-485)
- Full floating-point math and trigonometric functions with 32-bit precision results
- Dual trajectory generators enabling relative and absolute position moves or velocity moves on top of gearing or camming
- Advanced gearing, allowing preset traverse and take-up winding parameters, including dwells and wrap counts
- Advanced camming including cubic spline interpolation and dynamic frequency and amplitude changes
- Virtual-axis mastering into camming through gearing which enables stand-alone; multi-axis coordinated motion
- Programmable and non-programmable protection features (both hardware and software)
- On Board local I/O including:
 - Drive Enable Input
 - Fault Output
 - Travel Limit inputs
 - Differential Encoder bus up to 500k Hz count rate
 - 4 General Use inputs
 - 1 High Speed Input
 - 1 high current output (may be used for external brake)

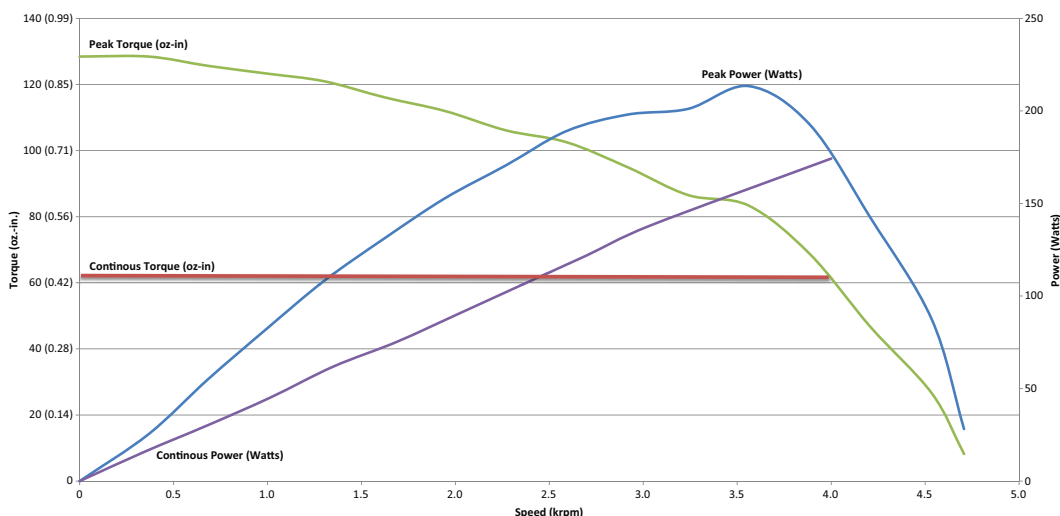


Specifications

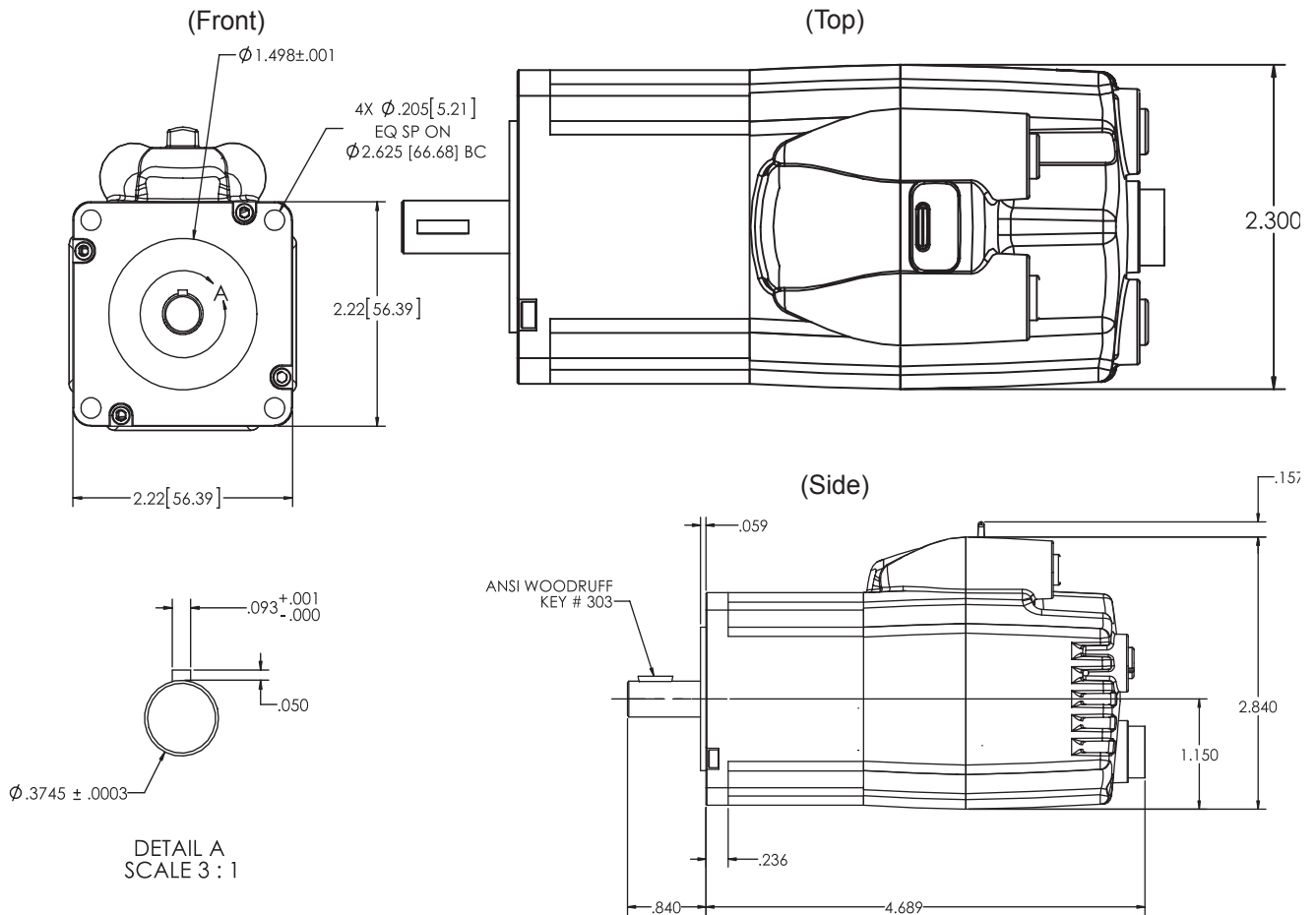
SmartMotor™ Series	SM23166MT-EPN	
Continuous Torque at 48v	68	oz-in
	0.48	N-m
Peak Torque	128	oz-in
	0.90	N-m
Nominal Continuous Power	189	Watt
Nominal Peak Power	213	Watts
No Load Speed	4,700	RPM
Encoder Resolution	4,000	Counts/Rev
Weight	1.7	lb
	0.77	kg
Shaft Diameter	0.375	in
	9.53	mm
Shaft, Radial Load	15.0	lb
	6.80	kg
Shaft, Axial Thrust Load	3.00	lb
	1.36	kg

Power Chart

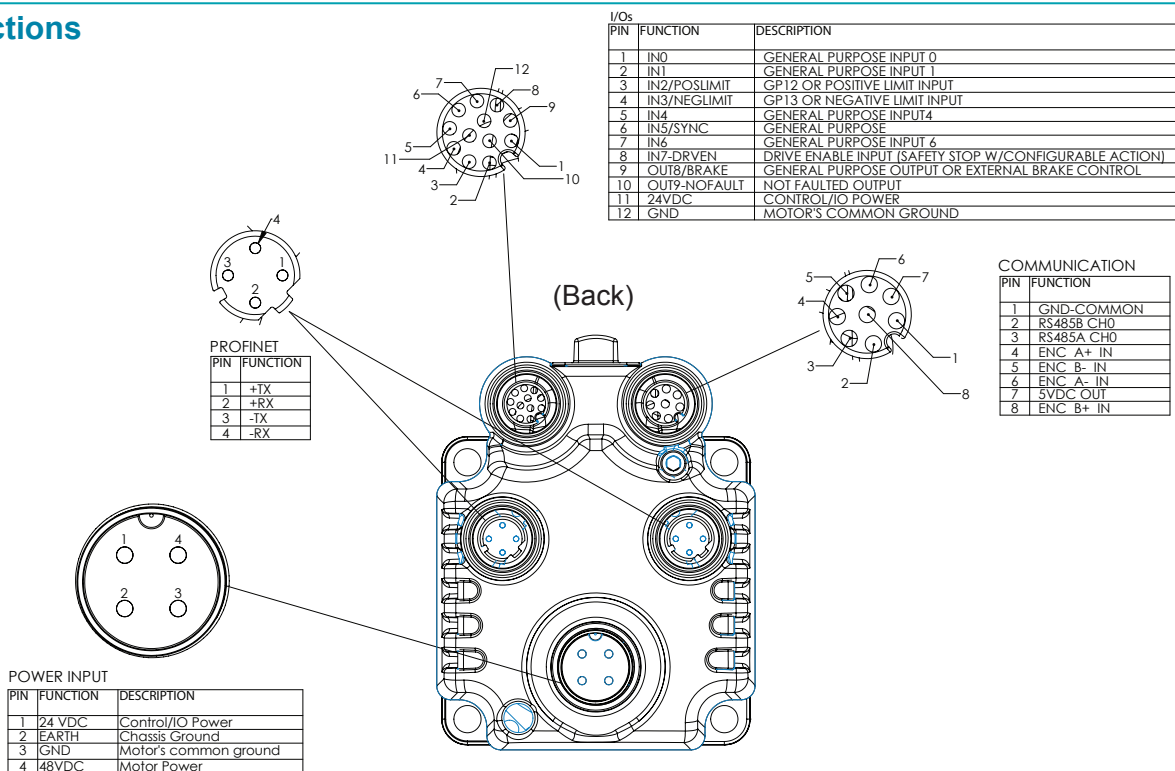
Servo Peak Torque at 48 volts MDC mode – SM23166MT-EPN motor Torque vs. Speed, 10% Derated Torque (85°C)



Dimensional Information

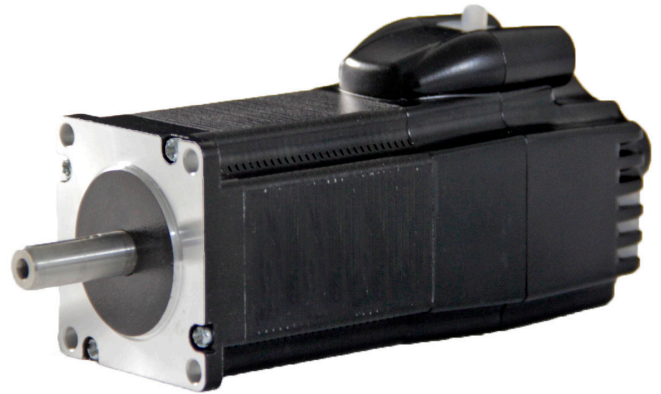


Connections



Key Features

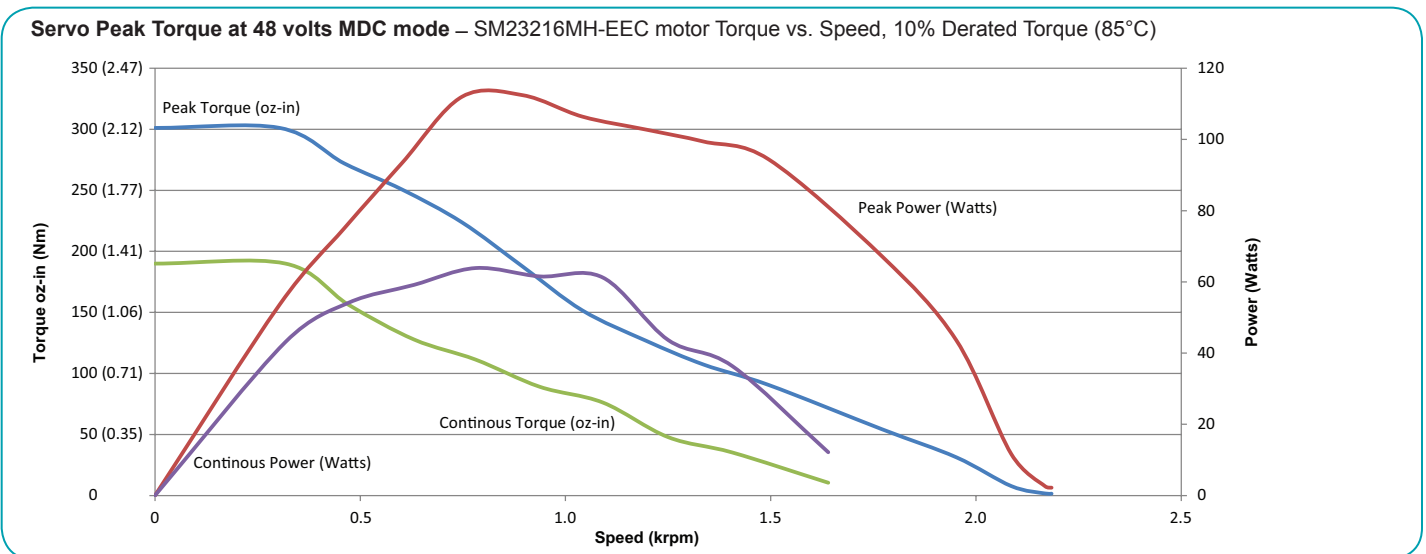
- Dual Port Ethernet (no Ethernet switches or hubs required)
- USB interface for programming, configuration and live diagnostics
- RS-485 Half Duplex communications port
 - Modbus Remote Terminal Unit (RTU) Slave (RS-485)
- Full floating-point math and trigonometric functions with 32-bit precision results
- Dual trajectory generators enabling relative and absolute position moves or velocity moves on top of gearing or camming
- Advanced gearing, allowing preset traverse and take-up winding parameters, including dwells and wrap counts
- Advanced camming including cubic spline interpolation and dynamic frequency and amplitude changes
- Virtual-axis mastering into camming through gearing which enables stand-alone; multi-axis coordinated motion
- Programmable and non-programmable protection features (both hardware and software)
- On Board local I/O including:
 - Drive Enable Input
 - Fault Output
 - Travel Limit inputs
 - Differential Encoder bus up to 500k Hz count rate
 - 4 General Use inputs
 - 1 High Speed Input
 - 1 high current output (may be used for external brake)



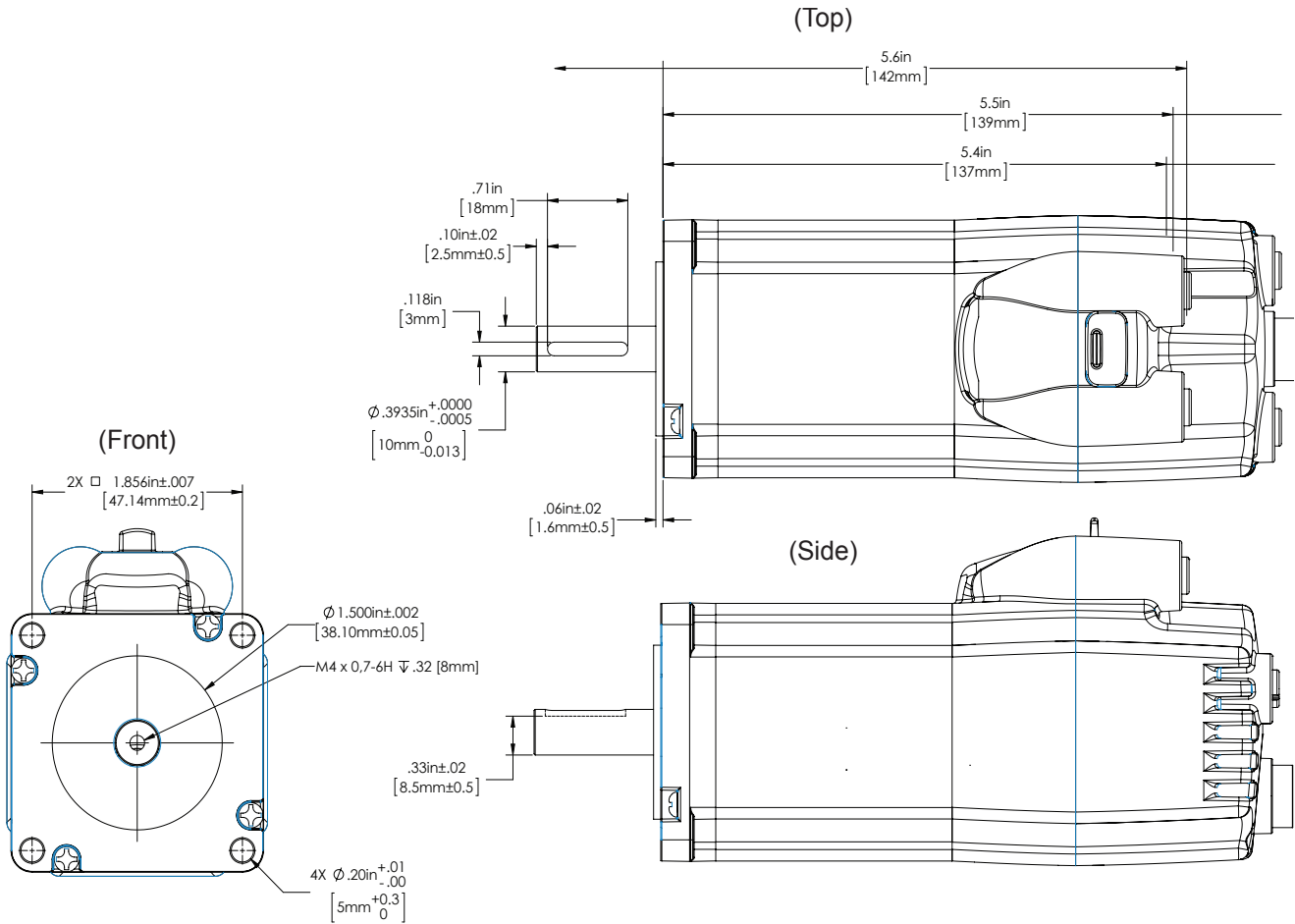
Specifications

SmartMotor™ Series	SM23216MH-EEC	
Continuous Torque at 48v	189	oz-in
	1.34	N-m
Peak Torque	304	oz-in
	2.15	N-m
Nominal Continuous Power	64	Watts
Nominal Peak Power	111	Watts
No Load Speed	2,250	RPM
Encoder Resolution	4,000	Counts/Rev
Weight	1.7	lb
	0.77	kg
Shaft Diameter	0.375	in
	9.53	mm
Shaft, Radial Load	15.0	lb
	6.80	kg
Shaft, Axial Thrust Load	3.00	lb
	1.36	kg

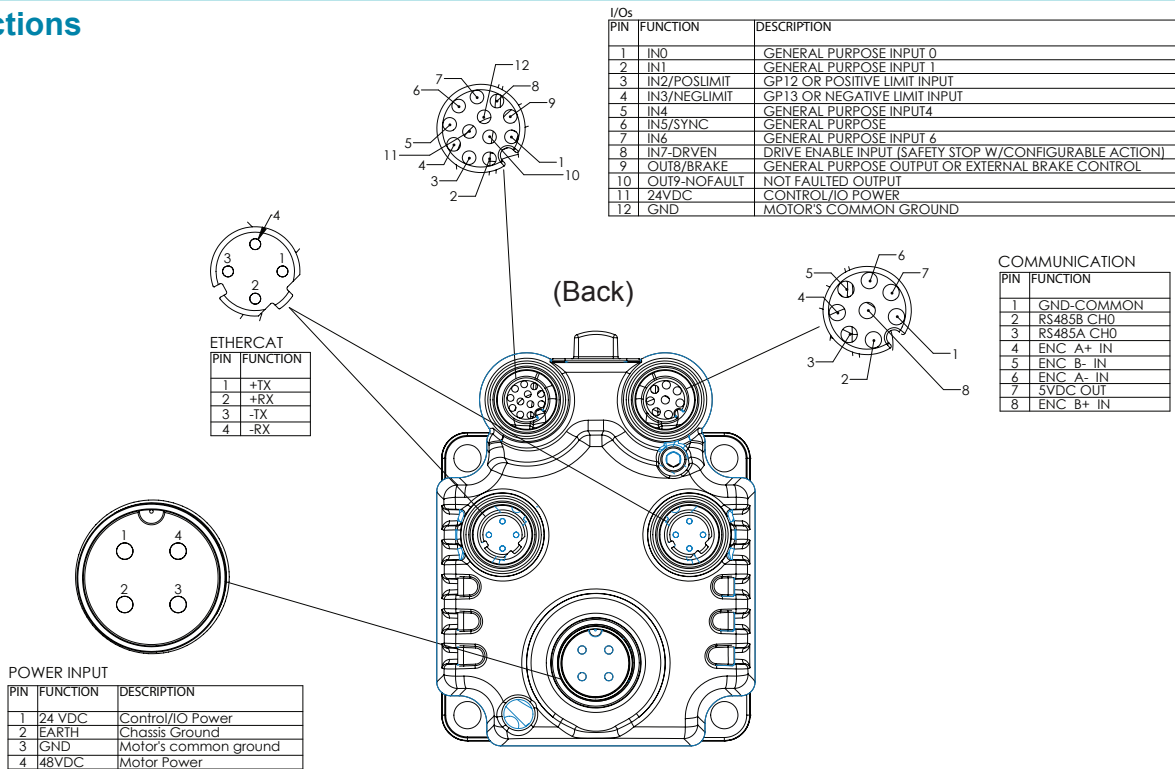
Power Chart



Dimensional Information

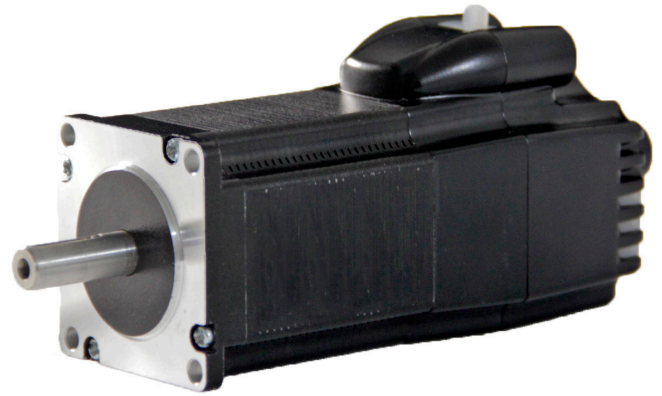


Connections



Key Features

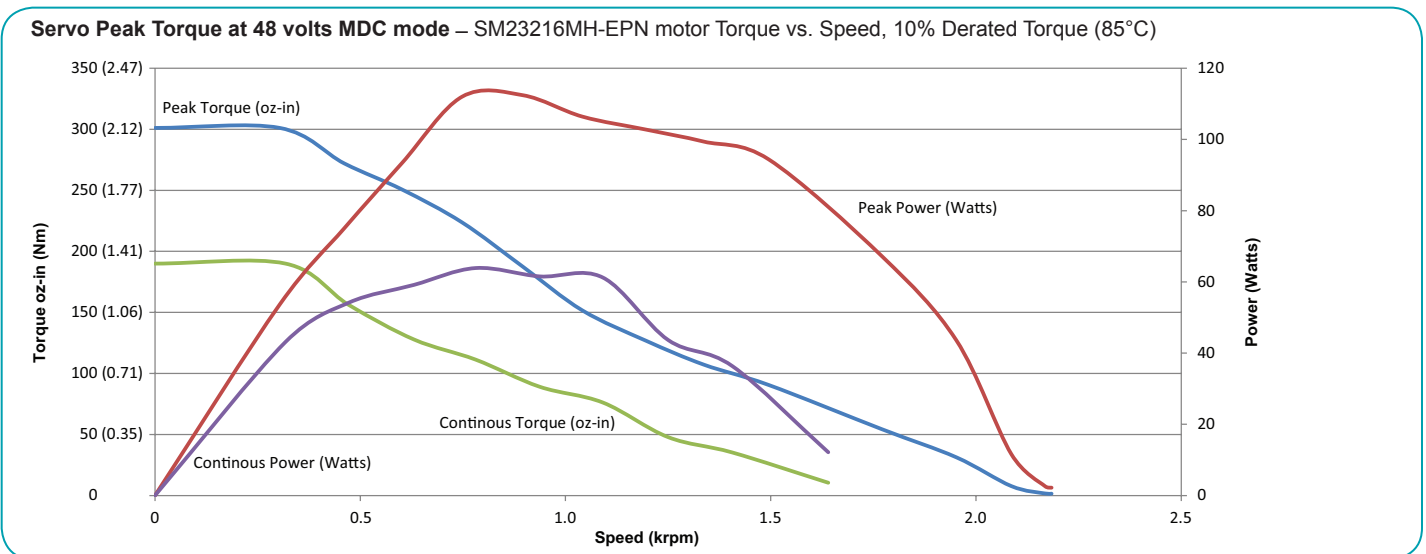
- Dual Port Ethernet (no Ethernet switches or hubs required)
- USB interface for programming, configuration and live diagnostics
- RS-485 Half Duplex communications port
 - Modbus Remote Terminal Unit (RTU) Slave (RS-485)
- Full floating-point math and trigonometric functions with 32-bit precision results
- Dual trajectory generators enabling relative and absolute position moves or velocity moves on top of gearing or camming
- Advanced gearing, allowing preset traverse and take-up winding parameters, including dwells and wrap counts
- Advanced camming including cubic spline interpolation and dynamic frequency and amplitude changes
- Virtual-axis mastering into camming through gearing which enables stand-alone; multi-axis coordinated motion
- Programmable and non-programmable protection features (both hardware and software)
- On Board local I/O including:
 - Drive Enable Input
 - Fault Output
 - Travel Limit inputs
 - Differential Encoder bus up to 500k Hz count rate
 - 4 General Use inputs
 - 1 High Speed Input
 - 1 high current output (may be used for external brake)



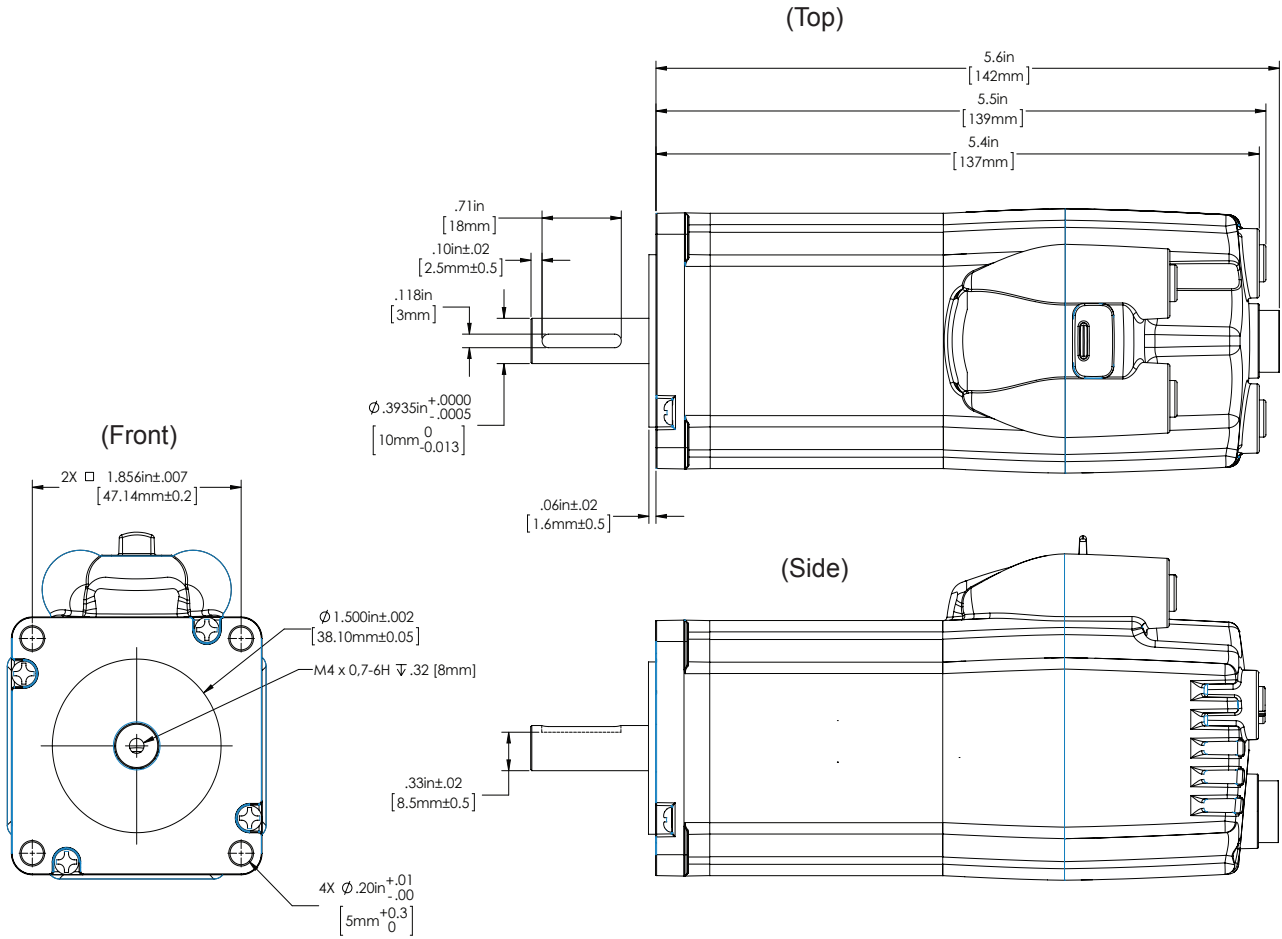
Specifications

SmartMotor™ Series	SM23216MH-EPN	
Continuous Torque at 48v	189	oz-in
	1.34	N-m
Peak Torque	304	oz-in
	2.15	N-m
Nominal Continuous Power	64	Watts
Nominal Peak Power	111	Watts
No Load Speed	2,250	RPM
Encoder Resolution	4,000	Counts/Rev
Weight	1.7	lb
	0.77	kg
Shaft Diameter	0.375	in
	9.53	mm
Shaft, Radial Load	15.0	lb
	6.80	kg
Shaft, Axial Thrust Load	3.00	lb
	1.36	kg

Power Chart



Dimensional Information



Connections

