

# Electrical equipment

## MICROSWITCHES

[switches.crouzet.com](http://switches.crouzet.com)

# ABOUT CROUZET

Switches & Position Sensors line offers snap action technology expertise through microswitches, limit switches and manually operated switches which are adaptable in terms of connectors, lever or body size.

The range also includes proximity sensors and switches.

These high quality and reliable products are suitable and crucial in harsh environments with severe constraints.

Crouzet is a brand of InnoVista Sensors™.

## MARKETS

Crouzet has worked for decades with customers who design products for highly technical applications that demand superior quality, reliability and meet national and international regulatory standards.

Crouzet's and sensors are utilized in a wide spectrum of applications in the following markets:

- › Industrial Valve & Pumps
- › Nuclear Industry
- › Energy Distribution
- › Trains
- › Specialty vehicles

## INNOVISTA SENSORS

InnoVista Sensors™ is a worldwide industrial specialist of sensors, controllers and actuators for automated systems.

Through its brands, Crouzet and Systron Donner Inertial, InnoVista Sensors™ offers a wide range of reliable, efficient and customizable components dedicated to the Aerospace & Defense, Transportation and Industrial markets and segments.

Thanks to the recognized expertise of its teams and a strong innovation policy, InnoVista Sensors™ brings performance enhancing solutions to its customers worldwide.

InnoVista Sensors™: your trusted partner of choice to face industrial challenges of today and tomorrow.

[www.innovistasensors.com](http://www.innovistasensors.com)

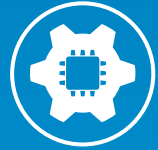
## Designs & Manufactures



Sensors



Controls



Actuators

## For



Aerospace  
& Defense



Transportation



Industry



Crouzet Switches' microswitches, installed in various electrical equipment devices (disconnectors, circuit breakers, fuse holders, etc), act as an auxiliary contact, perform signaling or send information when there is a change of electrical state. They can be used to inform maintenance operators or supervision centers of the equipment status.

**Whether integrated in high, medium or low voltage equipment, Crouzet Switches'**

**microswitches are reliable and ensure operational safety and reliability of the installed equipment throughout its lifetime.**

Depending on the switched currents and safety levels required, our products meet the technical requirements and comply with the standards relating to electrical equipment (magnetic blow-out, positive opening, UL/CCC approvals).

## ADAPTATION WHEEL

Crouzet has developed extensive expertise in adapting its products based on standard ranges, including the necessary project planning skills when it involves a new program.

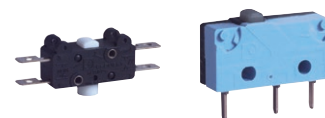
### SPECIAL PRODUCT

From the very start of a project, Crouzet Switches' experts work closely with your teams to develop the specifications. All our design, industrialization and approval expertise go into developing detection solutions that are tailored to your requirements.



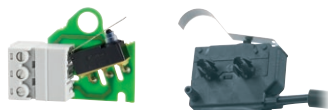
### STANDARD PRODUCT

A full range of microswitches, limit switches, manually operated switches and sensors, are immediately available so that you can design your system as quickly as possible.



### ADAPTED PRODUCT

Complete coordination between your project teams and our specialists, these adapted products have exactly the right levels of performance and functionality you need for your applications.

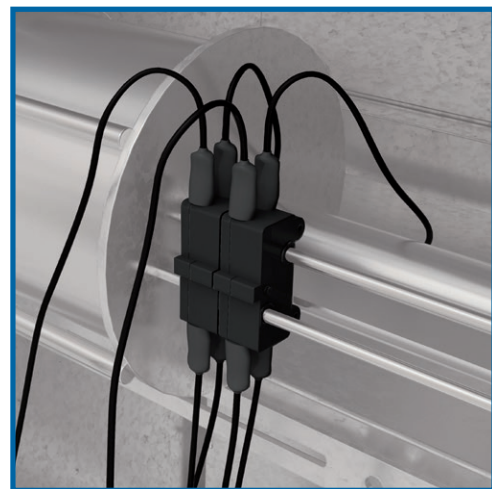
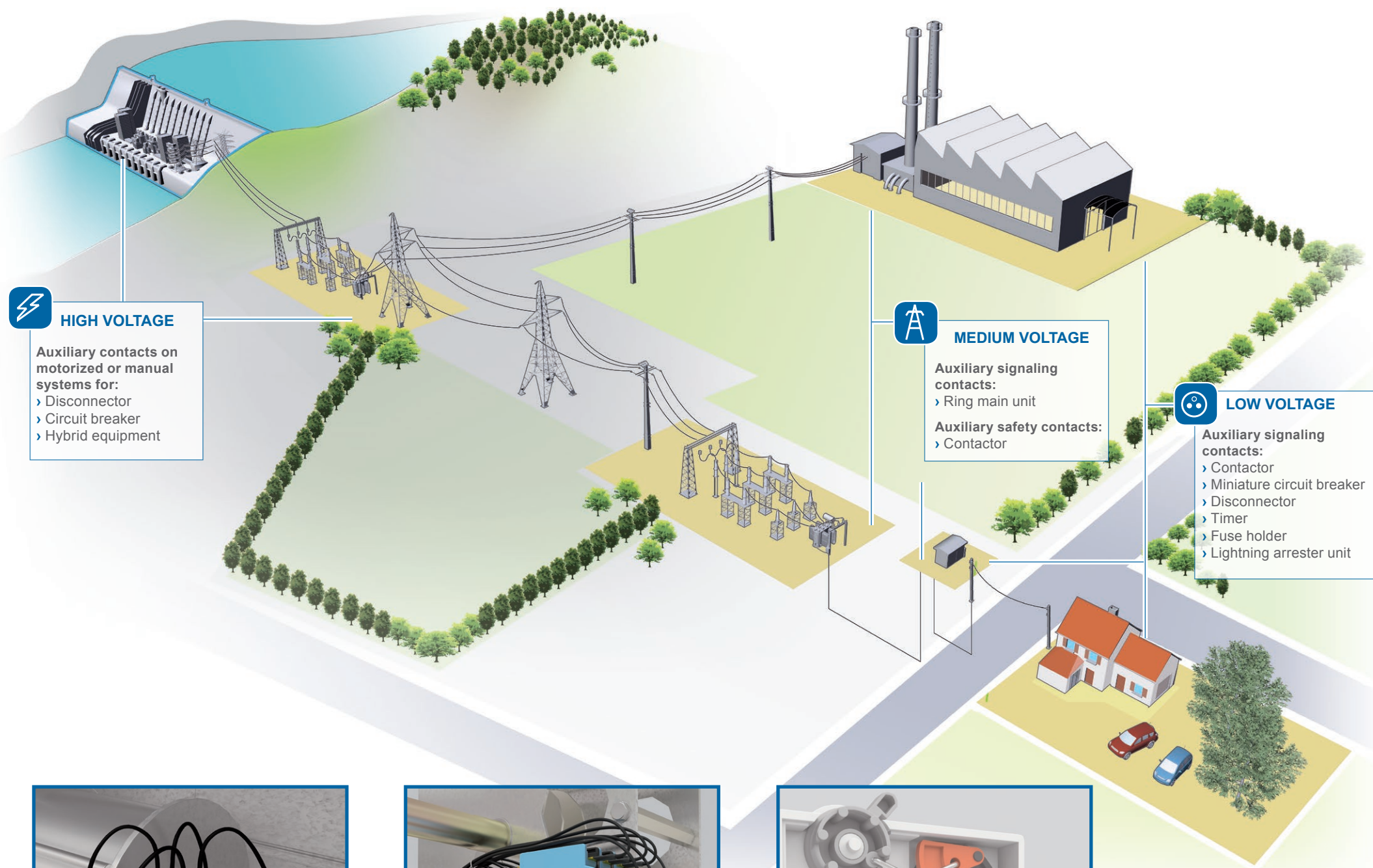


### PRODUCT WITH ADDED VALUE

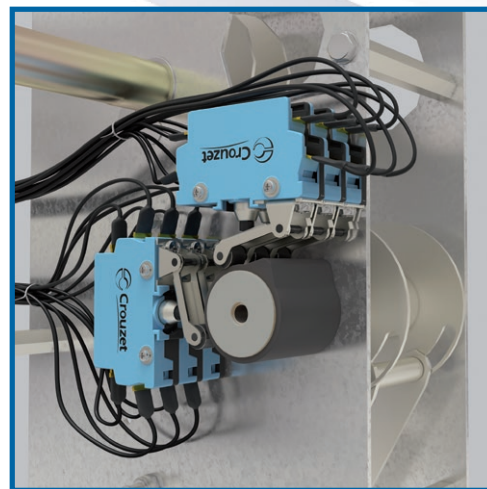
All our standard products can have additional factory-mounted auxiliaries or accessories, including connectors, leads, special terminals, fixings, levers, etc. Seamless integration into your equipment means you benefit from simpler logistics and optimum installation reliability.



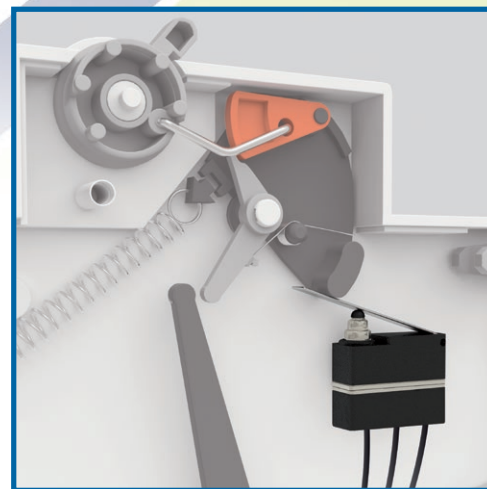
# THE CROUZET OFFER TO THE ELECTRICAL EQUIPMENT MARKET



Auxiliary contact (83106) for high voltage motorized disconnect switch



Auxiliary contact (PBX) on control mechanism associated with a Ring Main Unit



Signaling contact (V5 sealed) for low voltage MCBs

## SELECTION OF SNAP-ACTION MICROSWITCHES

|  |  |  |
|--|--|--|
|  | <p><b>8329 - Miniature, Operating force 0.5 to 4N, IP67 Protection</b></p> <ul style="list-style-type: none"> <li>› Max. rating 10 A 250 VAC</li> <li>› Quick connect terminal output &amp; lead output optional</li> <li>› 4 mm &amp; 7 mm width flat lever optional</li> </ul>   |  |
|  | <p><b>83106 - Double break, Momentary or Maintained action</b></p> <ul style="list-style-type: none"> <li>› Max. rating 10 A 250 VAC</li> <li>› Double break changeover switch (SPDT-form Za)</li> <li>› Multipole versions on metal plates</li> <li>› Wide choice of actuators for symmetrical mounting</li> </ul>  |  |
|  | <p><b>83154 - Double break, High DC rating</b></p> <ul style="list-style-type: none"> <li>› Max. rating 5 A 250 VDC</li> <li>› Double break changeover switch (SPDT-form Za) with magnetic blow-out</li> <li>› Multipole versions on metal plates</li> <li>› Wide choice of actuators</li> </ul>   |  |
|  | <p><b>PBX 8324 - Double break, Positive opening</b></p> <ul style="list-style-type: none"> <li>› Max. rating 10 A 250 VAC</li> <li>› Double break changeover switch (SPDT-form Zb) with positive break operation. Separate NO/NC circuits</li> <li>› IP65/IP67 sealed version, Low level version</li> <li>› Tag terminals or lead outputs. Levers. Mounting plates</li> </ul>                        |  |
|  | <p><b>V3 83161 &amp; 83160 - Miniature, Operating force 0.15 to 5 N</b></p> <ul style="list-style-type: none"> <li>› Max. rating 20 A 250 VAC</li> <li>› Dual-current version 1 mA 4 VDC to 5 A 250 VAC</li> <li>› High DC rating version with magnetic blow-out</li> <li>› Version with positive break operation</li> <li>› Extensive choice of actuators, multiposition fitting options</li> </ul> |  |
|  | <p><b>V4 83170 - Subminiature, Operating force 0.6 to 2.2 N</b></p> <ul style="list-style-type: none"> <li>› Max. rating 12 A 250 VAC</li> <li>› Dual-current version 1 mA 4 VDC to 5 A 250 VAC</li> <li>› Mushroom-head button version for multidirectional actuation up to 45°</li> <li>› Extensive choice of actuators, 2 fitting positions</li> </ul>  |  |
|  | <p><b>V4S 8318 - Subminiature, IP67 Sealed</b></p> <ul style="list-style-type: none"> <li>› Max. rating 10 A 250 VAC</li> <li>› Dual-current version 1 mA 4 VDC to 5 A 250 VAC</li> <li>› Easy installation versions</li> <li>› Tag terminals or lead/cable outputs</li> <li>› Extensive choice of actuators, 2 fitting positions</li> </ul>   |  |
|  | <p><b>V5S 8320 - Sub-subminiature, IP67 Sealed</b></p> <ul style="list-style-type: none"> <li>› Maximum rating 4 A 250 VAC</li> <li>› Low level version 1 to 50 mA 4 to 14 V</li> <li>› Long overtravel: &gt; 2 mm</li> <li>› Multidirectional actuation up to 45°</li> <li>› Tag terminals or lead outputs</li> </ul>   |  |
|  | <p><b>Special microswitches: the optimum response</b></p> <ul style="list-style-type: none"> <li>› Products developed to specification</li> <li>› Fully integrated in the application</li> <li>› Characteristics adapted to meet requirements</li> <li>› Built-in terminal block</li> <li>› Tried and tested or innovative mechanisms</li> </ul>   |  |

\* Approval pending



**AMERICAS**
**CANADA**

Tel.: +1 (855) 929-5465  
americas.custserv@crouzet.com

**MEXICO**

Tel.: +1 (855) 929-5465  
americas.custserv@crouzet.com

**USA**

Tel.: +1 (855) 929-5465  
americas.custserv@crouzet.com

**COUNTRIES NOT LISTED**

Tel.: +1 (855) 929-5465  
americas.custserv@crouzet.com

**EUROPE / MIDDLE EAST / AFRICA**
**BELGIUM**

Tel.: +32 (0) 2 620 06 05  
Fax: +32 (0) 2 461 00 23  
klantenservice@crouzet.com

**FRANCE**

Tel.: +33 (0) 475 802 101  
Fax: +33 (0) 475 828 900  
relationclient@crouzet.com

**GERMANY / AUSTRIA**

Tel.: +49 (0) 2103/9385930  
Fax: +49 (0) 2103/980-222  
kundenservice@crouzet.com

**ITALY**

Tel.: +39 (02) 38 594 099  
Fax: +39 (02) 82 952 104  
assistenzaclienti@crouzet.com

**SPAIN / PORTUGAL**

Tel.: +34 (91) 215 80 95  
Fax: +34 (93) 2 20 02 05  
atencionalcliente@crouzet.com

**SWITZERLAND**

Tel.: +41 (0) 225 67 57 90  
Fax: +41 (0) 565 88 02 75  
kundenservice@crouzet.com

**THE NETHERLANDS**

Tel.: +31 (0) 20-654 52 20  
klantenservice@crouzet.com

**UNITED KINGDOM**

Tel.: +44 (0) 2076 600 025  
customer.relation@crouzet.com

**COUNTRIES NOT LISTED**

Tel.: +33 (0) 475 802 102  
Fax: +33 (0) 475 828 900  
customer.relation@crouzet.com

**ASIA / PACIFIC**
**CHINA**

Tel.: +86 (21) 8025 7166  
Fax: +86 (21) 6107 1771  
china@crouzet.com

**INDIA**

Tel.: +91 (80) 4113 2204/05  
Fax: +91 (80) 4113 2206  
india@crouzet.com

**SOUTH KOREA**

Tel.: +82 (2) 2679 8312  
Fax: +82 (2) 2679 9888  
korea@crouzet.com

**EAST ASIA PACIFIC**

Tel.: +86 (21) 8025 7177  
Fax: +86 (21) 6107 1771  
eap@crouzet.com

**Warning:**

The product information contained in this catalogue is given purely as information and does not constitute a representation, warranty or any form of contractual commitment. Crouzet Automatismes SAS and its subsidiaries reserve the right to modify their products without notice. It is imperative that we should be consulted over any particular use or application of our products and it is the responsibility of the buyer to establish, particularly through all the appropriate tests, that the product is suitable for the use or application. Under no circumstances will our warranty apply, nor shall we be held responsible for any application (such as any modification, addition, deletion, use in conjunction with other electrical or electronic components, circuits or assemblies, or any other unsuitable material or substance) which has not been expressly agreed by us prior to the sale of our products.