

Simple & Clean Stainless  
Steel Construction

Multiple Curves,  
Inclines & Declines

Industry Best  
Product Transfers

High Speed Performance  
– Up to 250 FPM



# *AquaGard*<sup>®</sup> 7100 SERIES CONVEYORS

The Next Generation in Stainless  
Flexible Chain Conveyors!

**DORNER**<sup>®</sup>  
*MOVE FAST. MOVE SMART.*

# AquaGard® 7100 SERIES

## 7100 Series Conveyors are Best for:

- Packaging
- Bottling
- Dry Food Processing
- Secondary Packaging
- Inclines, Declines & Curves
- Part Handling
- Transfers
- Long Lengths
- Elevation Changes
- Accumulation
- Buffering

## Sizes & Measurements

Chain Width	4 1/2"	7 1/2"	10"	12"
Frame Width	5"	8"	10 1/2"	12 1/2"
Max Part Width	9 1/2"	12 1/2"	15"	17"
Max Length	100ft			

## Loads & Speeds

- Loads up to 700 lbs
- Speeds up to 222 fpm

## Flexible Chain Types

- Standard
  - Low Friction
  - Friction Insert
  - Roller Top
- Specialty
  - Metal Chain
  - Grip Top Chain
  - Cleated Chain



Low Friction



Friction Insert

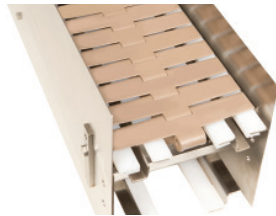


Roller Top

## Guiding Options



Fully Adjustable



Stainless High Sides

Adjustable Outboard Guides Also Available

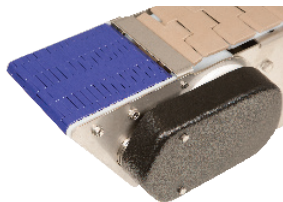
## Stands

- Fixed Foot Support Stands
- Stainless Steel, 2B Finish
- Durable Welded 7 ga Construction
- Incline Mount Version for Angled Applications
- Other Options Also Available



## Transfers

- Industry-Best Transfers
- Multiple Mounting Configurations



Powered Transfer



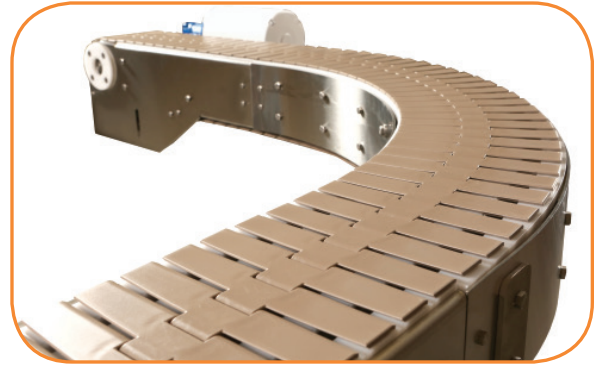
Roller Transfer



Side to Side Transfer

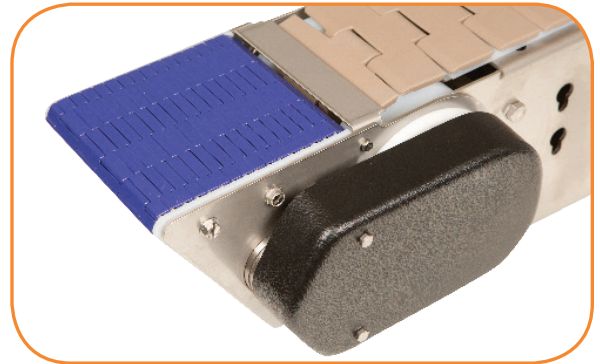
## Clean & Innovative Design

- Smooth frame design for ease of cleaning
- Capable of multiple curves as well as inclines and declines on a single conveyor
- Plain bend corners with 24" on centerline radius use FDA approved oil impregnated wear strips
- Inclines and declines available up to 30 degrees
  - Incline angles are integrated into the intermediate modules



## Innovative Transfer Options

- Powered Transfers
  - Provides smooth in line transfer of small parts
  - Slave driven off of drive or idler module
  - Transfers parts as small as 3" in diameter
- Standard Tails Side to Side Transfer
  - Side by side drive / idler tail
  - 1" from chain edge to edge
- Side Transfer Modules
  - Intermediate module that brings chain past the frame edge
  - 1/8" from chain edge to edge

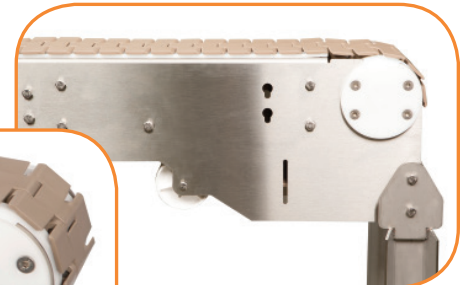


## Compact Drive Module & Idler Tail

- Idler Tail
  - 12" long
  - Bearings are located inboard
  - Flush design for side transfers
  - Sprocket comes standard for added shaft or powered transfer
- Drive Tail
  - 24" long with a 5" diameter sprocket
  - Catenary belt take-up with sight gauge
  - Motor can be mounted to the side or underneath



Idler Tail



Drive Tail

## The Benefits of a Dorner AquaGard 7100 Series Conveyor

### Industry Ready

- 300 Series Stainless Steel frame
- All materials are FDA approved plastics and Stainless Steel

### Quality Construction

- FDA approved oil impregnated wear strips on curves
- Bolt together construction for modularity and future add-ons

### Time Saving

- Dorner's online configurator engineers simple or complex conveyors to meet your needs in minutes
- The industry leading tool delivers a complete 3D CAD assembly model for instant validation of fit
- 7100 Series conveyors are shipped in sub-assemblies for fast and simple installation

At Dorner we make it our mission to provide you with a system that you can depend on to move your product from point A to point B with precision and speed. It's that commitment and history of proven excellence that has made the Dorner Brand a recognized leader in precision conveyors for nearly 50 years. With our complete line of customizable conveyor systems we have the perfect solution for you!



## 1X Series

The 1X Series Line is designed for small part handling and transfers where space is a premium.

### 1X Series Family:

- Flat Belt
- Aluminum Frame
- Widths to 10"
- Loads to 15 lbs
- Speeds up to 80 fpm



## 2X Series

The 2X Series Line is engineered for small to medium sized parts, precision applications and flexible layouts.

### 2X Series Family:

- Flat Belt
- Cleated Belt
- Modular Belt
- Precision Move - Timing Belt
- SmartFlex® - Flexible Chain
- Aluminum Frame
- Widths to 24"
- Loads to 200 lbs
- Speeds up to 400 fpm
- Curves
- Inclines & Declines



## 3X Series

The 3X Series Line is designed for medium to heavy sized parts, precision applications, bulk handling and flexible layouts.

### 3X Series Family:

- Flat Belt
- Cleated Belt
- Modular Belt
- Flexible Chain
- Precision Move - Timing Belt
- Aluminum Frame
- Widths to 60"
- Loads to 1000 lbs
- Speeds up to 600 fpm
- Curves
- Z-Frame Elevators



## 7X Series

The 7X Series Stainless Steel Line is engineered for small to heavy product requiring various levels of sanitary design and flexible layouts.

### 7X Series Family:

- AquaPruf® + AquaGuard®
- Flat Belt
- Cleated Belt
- Modular Belt
- Flexible Chain
- Stainless Steel Frame
- Widths to 60"
- Loads to 750 lbs
- Speeds up to 400 fpm
- Curves
- Z-Frame Elevators

### NEED SOMETHING DIFFERENT?

DORNER'S **ENGINEERED SOLUTIONS GROUP** PROVIDES EXACTLY WHAT YOU NEED FOR YOUR SPECIFIC APPLICATION. FROM MODIFIED STANDARD CONVEYORS TO COMPLETE CUSTOM DESIGNS.

### LOOKING FOR AFTER SALE SUPPORT?

DORNER'S **SERVICES TEAM** PROVIDES COMPLETE SUPPORT FROM REPLACEMENT PARTS TO INSTALLATION AND MAINTENANCE SERVICES.



DORNER MFG. CORP.  
PO Box 20 • 975 Cottonwood Ave.  
Hartland, WI 53029 USA

INSIDE THE USA  
TEL: 800.397.8664  
FAX: 800.369.2440

OUTSIDE THE USA  
TEL: 262.367.7600  
FAX: 262.367.5827

[www.dorner.com](http://www.dorner.com)  
[info@dorner.com](mailto:info@dorner.com)



© Dorner Mfg. Corp. 2015. All Rights Reserved. Made in the U.S.A. 851-768 Rev. B 10M-JBK-0215

Courtesy of Steven Engineering, Inc - (800) 258-9200 - [sales@steveneng.com](mailto:sales@steveneng.com) - [www.stevenengineering.com](http://www.stevenengineering.com)