

<b>Part Number Keys</b>	<b>G2</b>
<b>Cordsets</b>	<b>G4</b>
<b>Receptacles</b>	<b>G9</b>
<b>Field Wireables</b>	<b>G27</b>
<b>Closure Caps</b>	<b>G30</b>

**Features**

- M16 threaded connectors
- 5 through 8, 12, 14 and 19-pin
- Up to 8 Amp, 300 Volt rated
- Multiple tee configurations
- IEC IP67 protection
- Signal consolidation



## Cordset Part Number Key

Part Number Keys are to assist in IDENTIFICATION ONLY. Consult factory for catalog items not identified.

<b>B</b>	<b>S</b>	<b>M</b>	<b>12</b>	<b>999</b>	<b>*</b>	<b>/S..</b>
----------	----------	----------	-----------	------------	----------	-------------

**M16 Versafast Cordset**

**Gender**  
 K = female connector  
 S = male connector

**Configuration**  
 (blank) = assembled connector  
 M = straight molded  
 WM = right angle molded

**Housing Material**  
 (blank) = nickel plated brass  
 K = nylon  
 V = stainless steel

**Insertion Point of Extension Cable and Second Prefix\***  
 \* Male connector listed first, female connector second  
 Example: **BSM BKM 12-001-1**

**Number of Pins**

5 = 5	12 = 12
6 = 6	14 = 14
7 = 7	19 = 19
8 = 8	

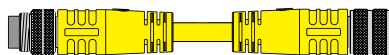
**Varieties**  
 (blank) = PVC jacket  
 /S90 = TPU jacket  
 /S101 = Flexlife®-20, high flex cable

**Length in Meters**

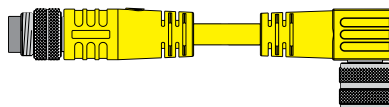
**Number of Wires / AWG / Color Codes**

<u>5-Pin</u>		
084	= 5x18 AWG	BN, BU, WH, BU, BK, GY
<u>6-Pin</u>		
085	= 6x18 AWG	BN, BU, WH, BU, BK, GY, PK
<u>7-Pin</u>		
086	= 7x18 AWG	WH, BN, GN, YE, GY, PK, BU
<u>8-Pin</u>		
087	= 8x18 AWG	WH, BN, GN, YE, GY, PK, BU, RD
<u>12-Pin</u>		
001	= 12x22 AWG	BN, BU, WH, GN, YE, GY, PK, RD, BK, OG, TN, VT / TPU jacket
967	= 12x22 AWG	(same color code as 001) / PVC jacket
999	= 12x22 AWG	(same color code as 001) / TPE jacket
<u>14-Pin</u>		
000	= 14x22 AWG	BN, RD/BU, BK, PK, GN, BU, OG, GY/BN, VT, WH, RD, GY, YE, TN / TPE jacket
002	= 14x22 AWG	(same color code as 000) / TPU jacket
755	= 12x24 AWG	OG, BK, GN, GY, BN, TN, VT, RD, WH, YE, PK, BU / PVC jacket
836	= 10x24 AWG	GY, GN, BK, BN, PK, YE, WH, RD, VT, BU / PVC jacket
917	= 12x24 AWG	RD/BU, GY, GN, BK, GY/PK, BN, PK, YE, WH, RD, VT, BU / PVC jacket
954	= 10x24 AWG	(same color code as 836) / TPE jacket
998	= 14x22 AWG	(same color code as 000) / PVC jacket
<u>19-Pin</u>		
995	= 19x22 AWG	BU, GY/PK, RD/BU, WH/GN, BK, BN/GN, PK, WH/YE, GN, YE/BN, BU, OG, GY/BN, VT, WH, RD, GY, YE, TN / PVC jacket
996	= 19x22 AWG	(same color code as 995) / TPU jacket
997	= 19x22 AWG	(same color code as 995) / TPE jacket

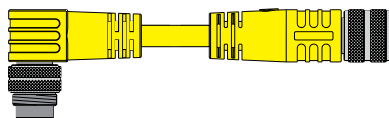
### Extension Examples



**B S M**    **B K W**    **12** - **999** - **\*** /S..



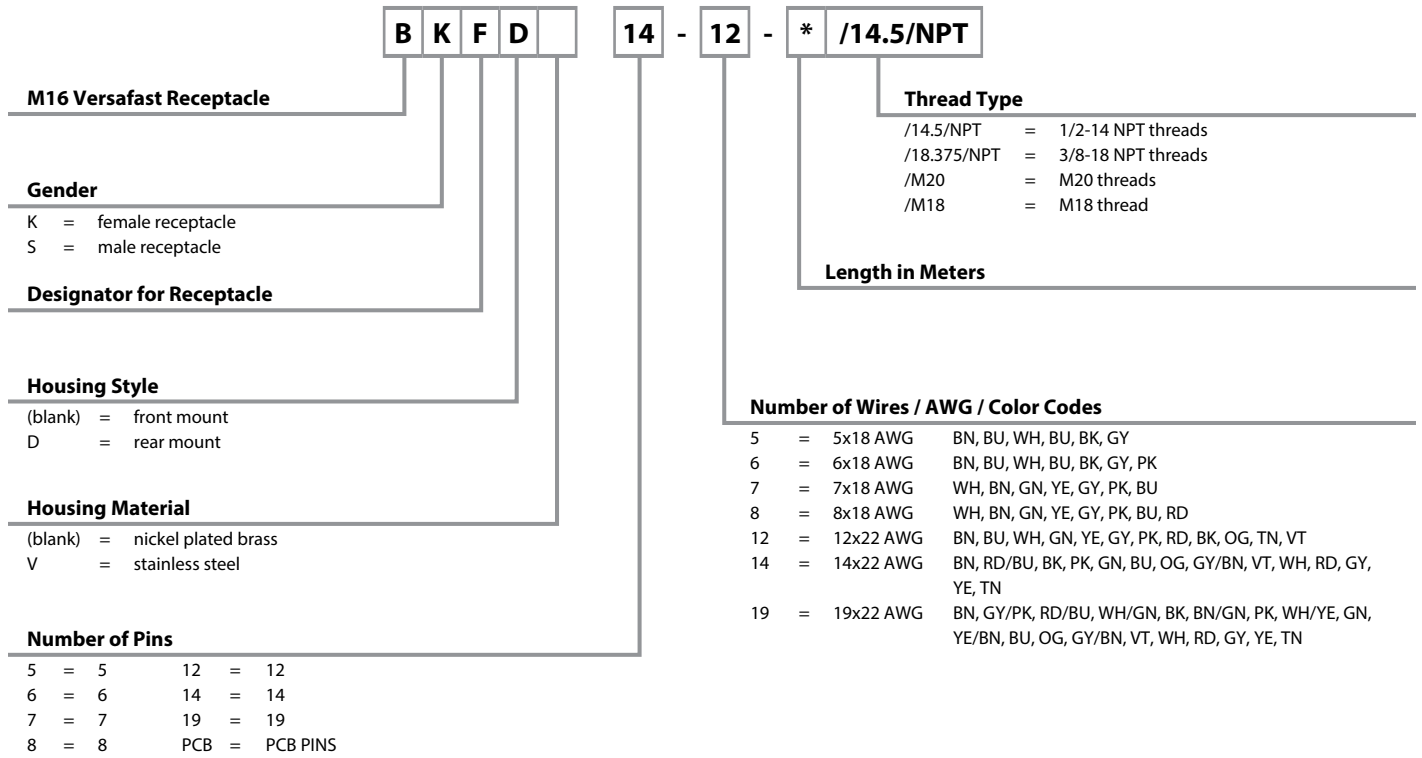
**B S M**    **B K W M**    **12** - **999** - **\*** /S..



**B S W M**    **B K M**    **12** - **999** - **\*** /S..

## Receptacle Part Number Key

Part Number Keys are to assist in IDENTIFICATION ONLY. Consult factory for catalog items not identified.



versafast®

## 5 - 8 Pin Cordsets

• IEC IP67 Protection



Connector Style	Female Part Number	Male Part Number	Features	Pinout
<p><b>BKM ..</b></p>	<p><b>BKM 5-084-*</b> <b>BKWM 5-084-*</b></p>	<p><b>BSM 5-084-*</b> <b>BSWM 5-084-*</b></p>	<p>ITC/PLTC PVC Yellow, 5x18 AWG, 105 °C, 300 VAC/VDC, 8 A, 7.6 mm OD, Cable #RF51084-*,M, 5-wire DC application, Flexlife®</p>	<p><b>Female</b></p> <p><b>Male</b></p>
<p><b>BKWM ..</b></p>	<p><b>BKM 6-085-*</b> <b>BKWM 6-085-*</b></p>	<p><b>BSM 6-085-*</b> <b>BSWM 6-085-*</b></p>	<p>ITC/PLTC PVC Yellow, 6x18 AWG, 105 °C, 300 VAC/VDC, 7 A, 8.4 mm OD, Cable #RF51085-*,M, 6-wire DC application, Flexlife</p>	<p><b>Female</b></p> <p><b>Male</b></p>
<p><b>BSM ..</b></p>	<p><b>BKM 7-086-*</b> <b>BKWM 7-086-*</b></p>	<p><b>BSM 7-086-*</b> <b>BSWM 7-086-*</b></p>	<p>ITC/ PLTC PVC Yellow, 7x18 AWG, 105 °C, 125 VAC/VDC, 7 A, 8.1 mm OD, Cable #RF51086-*,M, 7-wire DC application, Flexlife</p>	<p><b>Female</b></p> <p><b>Male</b></p>
<p><b>BSWM ..</b></p>	<p><b>BKM 8-087-*</b> <b>BKWM 8-087-*</b></p>	<p><b>BSM 8-087-*</b> <b>BSWM 8-087-*</b></p>	<p>ITC/PLTC PVC Yellow, 8x18 AWG, 105 °C, 125 VAC/VDC, 7 A, 8.9 mm OD, Cable #RF51087-*,M, 8-wire DC application, Flexlife</p>	<p><b>Female</b></p> <p><b>Male</b></p>

We reserve the right to make technical alterations without prior notice.

\* Length in meters. Standard cable lengths are 5 and 10 meters. Consult factory for other lengths.  
Standard housing and coupling nut material is anodized aluminum.. "BKM.."; "BKWM.." indicates stainless steel and "BKM.." indicates nylon.



## 12-Pin Cordsets

- For Eurofast® Junction Boxes and multi-conductor applications
- IEC IP67 Protection



Connector Style	Female Part Number	Male Part Number	Features	Pinout
<p><b>BKM ..</b></p>	<b>BKM 12-001-*</b> <b>BKWM 12-001-*</b>	<b>BSM 12-001-*</b> <b>BSWM 12-001-*</b>	AWM TPU Black, 12x22 AWG, 90 °C, 125 VAC/VDC, 4 A, 7.6 mm OD, Cable #RF51001-*M, 12-wire DC applications, Flexlife®	<p><b>Female</b></p> <p><b>Male</b></p>
<p><b>BKWM ..</b></p>	<b>BKM 12-967-*</b> <b>BKWM 12-967-*</b>	<b>BSM 12-967-*</b> <b>BSWM 12-967-*</b>	ITC/PLTC PVC Black, 12x22 AWG, 105 °C, 125 VAC/VDC, 4 A, 7.5 mm OD, Cable #RF50967-*M, 12-wire DC applications, Flexlife	
<p><b>BSM ..</b></p>				
<p><b>BSWM ..</b></p>	<b>BKM 12-999-*/S101</b> <b>BKWM 12-999-*/S101</b>	<b>BSM 12-999-*/S101</b> <b>BSWM 12-999-*/S101</b>	AWM TPE Black, 12x22 AWG, 105 °C, 125 VAC/VDC, 4 A, 8.0 mm OD, Cable #RF50999-*M, 12-wire DC applications, Flexlife-20, high flex - Over 20 million cycles	

We reserve the right to make technical alterations without prior notice.

Cordsets

\* Length in meters. Standard cable lengths are 5 and 10 meters. Consult factory for other lengths. Standard housing and coupling nut material is anodized aluminum.. "BKM.."; "BKMV.." indicates stainless steel and "BKMK.." indicates nylon.

## 14-Pin Cordsets

- For Picofast® Junction Boxes and multi-conductor applications
- IEC IP67 Protection



Connector Style	Female Part Number	Male Part Number	Features	Pinout
<p><b>BKM ..</b></p>	<p><b>BKM 14-002-*</b> <b>BKWM 14-002-*</b></p>	<p><b>BSM 14-002-*</b> <b>BSWM 14-002-*</b></p>	<p>AWM TPU Black, 14x22 AWG, 90 °C, 30 VAC/VDC, 3 A, 7.6 mm OD, Cable #RF51002-*M, 14-wire DC applications, Flexlife®</p>	<p><b>Female</b></p>
<p><b>BKWM ..</b></p>	<p><b>BKM 14-000-*/S101</b> <b>BKWM 14-000-*/S101</b></p>	<p><b>BSM 14-000-*/S101</b> <b>BSWM 14-000-*/S101</b></p>	<p>AWM TPE Black, 15x22 AWG, 105 °C, 30 VAC/VDC, 3 A, 9.0 mm OD, Cable #RF51000-*M, 14-wire DC applications, Flexlife-20, high flex - over 20 million cycles</p>	
<p><b>BKM ..</b></p>	<p><b>BKM 14-998-*</b> <b>BKWM 14-998-*</b></p>	<p><b>BSM 14-998-*</b> <b>BSWM 14-998-*</b></p>	<p>ITC/PLTC PVC Black, 14x22 AWG, 105 °C, 30 VAC/VDC, 3 A, 7.6 mm OD, Cable #RF50998-*M, 14-wire DC applications, Flexlife</p>	
<p><b>BSWM ..</b></p>	<p><b>BKM 14-755-*</b> <b>BKWM 14-755-*</b></p>	<p><b>BSM 14-755-*</b> <b>BSWM 14-755-*</b></p>	<p>AWM PVC Black, 12x24 AWG, 105 °C, 30 VAC/VDC, 3 A, 6.7 mm OD, Cable #RF50755-*M, 12-wire DC applications, Flexlife</p>	
				<p><b>Male</b></p>

We reserve the right to make technical alterations without prior notice.

\* Length in meters. Standard cable lengths are 5 and 10 meters. Consult factory for other lengths. Standard housing and coupling nut material is anodized aluminum.. "BKM.."; "BKWM.." indicates stainless steel and "BKMK.." indicates nylon.



## 14-Pin Cordsets

- For Eurofast®/Picofast® Junction Boxes and multi-conductor applications
- IEC IP67 Protection



Connector Style	Female Part Number	Male Part Number	Features	Pinout
<p><b>BKM ..</b></p>	<b>BKM 14-836-*</b> <b>BKWM 14-836-*</b>	<b>BSM 14-836-*</b> <b>BSWM 14-836-*</b>	AWM PVC Black, 10x24 AWG, 105 °C, 30 VAC/VDC, 3 A, 6.6 mm OD, Cable #RF50836-*M, 10-wire DC applications, junction box, VB 803M(Z)-BS14, Flexlife®	<p><b>Female</b></p>
<p><b>BKWM ..</b></p>	<b>BKM 14-954-*/S101</b> <b>BKWM 14-954-*/S101</b>	<b>BSM 14-954-*/S101</b> <b>BSWM 14-954-*/S101</b>	AWM TPE Black, 12x24 AWG, 105 °C, 30 VAC/VDC, 3 A, 7.6 mm OD, Cable #RF-50943*M, 10-wire DC applications, junction box VB 803M(Z)-BS14, Flexlife-20, high flex - over 20 million cycles	<p><b>Female</b></p>
<p><b>BSM ..</b></p>				
<p><b>BSWM ..</b></p>	<b>BKM 14-917-*</b> <b>BKWM 14-917-*</b>	<b>BSM 14-917-*</b> <b>BSWM 14-917-*</b>	AWM PVC Yellow, 12x24 AWG, 105 °C, 30 VAC/VDC, 3 A, 6.6 mm OD, Cable #RF50917-*M, 12-wire DC applications, junction boxes 4MBM12-5-BS14 & VB 404M(Z)-BS14, Flexlife	<p><b>Male</b></p>

We reserve the right to make technical alterations without prior notice.

\* Length in meters. Standard cable lengths are 5 and 10 meters. Consult factory for other lengths. Standard housing and coupling nut material is anodized aluminum.. "BKM.."; "BKWM.." indicates stainless steel and "BKMV.." indicates nylon.

## 19-Pin Cordsets

- For Picofast® Junction Boxes and multi-conductor applications
- IEC IP67 Protection






Connector Style	Female Part Number	Male Part Number	Features	Pinout
<p><b>BKM ..</b></p>	<p><b>BKM 19-873-*</b> <b>BKWM 19-873-*</b></p>	<p><b>BSM 19-873-*</b> <b>BSWM 19-873-*</b></p>	<p>AWM PVC Black, 19x26 AWG, 105 °C, 30 VAC/VDC, 3 A, 7.1 mm OD, Cable #RF50873-<i>*M</i>, 19-wire DC applications, Flexlife®</p>	<p>A. RD/BU B. WH/GN C. GY D. BN/GN E. GN F. GN/YE G. BK H. WH/YE I. WH/GY K. GY/BN L. GY/PK M. BN N. PK O. YE P. WH R. RD S. VT T. YE/BN U. BU</p> <p style="text-align: center;"><b>Female</b></p>
<p><b>BKWM ..</b></p>				
<p><b>BSM ..</b></p>	<p><b>BKM 19-995-*</b> <b>BKWM 19-995-*</b></p>	<p><b>BSM 19-995-*</b> <b>BSWM 19-995-*</b></p>	<p>ITC/PLTC PVC Black, 19x22 AWG, 105 °C, 30 VAC/VDC, 3 A, 8.5 mm OD, Cable #RF50995-<i>*M</i>, 19-wire DC applications &amp; junction box VB 804M(Z)-BS19, Flexlife</p>	<p>A. BU B. GY/PK C. RD/BU D. WH/GN E. BK F. BN/GN G. PK H. WH/YE I. GN K. YE/BN L. BN M. OG N. GY/BN O. VT P. WH R. RD S. GY T. YE U. TN</p> <p style="text-align: center;"><b>Male</b></p>
<p><b>BSWM ..</b></p>				

We reserve the right to make technical alterations without prior notice.

\* Length in meters. Standard cable lengths are 5 and 10 meters. Consult factory for other lengths. Standard housing and coupling nut material is anodized aluminum.. "BKM.."; "BKMV.." indicates stainless steel and "BKMK.." indicates nylon.



**M16 Receptacle Selection Guide**

Mounting Style	Image	Panel Thread Types	Page								
<p><b>Front Mount</b></p>		<table border="1"> <tr> <td><b>M18</b></td> <td><b>G12</b></td> </tr> <tr> <td><b>M20</b></td> <td><b>G14</b></td> </tr> <tr> <td><b>1/2-14 NPT</b></td> <td><b>G16</b></td> </tr> <tr> <td><b>3/8-18 NPT</b></td> <td><b>G18</b></td> </tr> </table>	<b>M18</b>	<b>G12</b>	<b>M20</b>	<b>G14</b>	<b>1/2-14 NPT</b>	<b>G16</b>	<b>3/8-18 NPT</b>	<b>G18</b>	
<b>M18</b>	<b>G12</b>										
<b>M20</b>	<b>G14</b>										
<b>1/2-14 NPT</b>	<b>G16</b>										
<b>3/8-18 NPT</b>	<b>G18</b>										
<p><b>Rear Mount</b></p>		<table border="1"> <tr> <td><b>M18</b></td> <td><b>G22</b></td> </tr> </table>	<b>M18</b>	<b>G22</b>							
<b>M18</b>	<b>G22</b>										
<p><b>PCB Mount</b></p>		<table border="1"> <tr> <td><b>PCB</b></td> <td><b>G24</b></td> </tr> </table>	<b>PCB</b>	<b>G24</b>							
<b>PCB</b>	<b>G24</b>										

We reserve the right to make technical alterations without prior notice.

Receptacles

## 5 - 8 Pin Receptacles, Front Mount

- IEC IP67 Protection



Connector Style	Female Part Number	Male Part Number	Features	Pinout
<p><b>BKF ..(5-8 pin)</b></p>	<b>BKF 5-5-*</b>	<b>BSF 5-5-*</b>	5x20 AWG, 105 °C, 300 VAC/VDC, 8 A, 5-Wire DC Application	<p><b>Female</b></p> <p><b>Male</b></p>
	<b>BKF 6-6-*</b>	<b>BSF 6-6-*</b>	6x20 AWG, 105 °C, 300 VAC/VDC, 7 A, 6-Wire DC Application	<p><b>Female</b></p> <p><b>Male</b></p>
	<b>BKF 7-7-*</b>	<b>BSF 7-7-*</b>	7x20 AWG, 105 °C, 125 VAC/VDC, 7 A, 7-Wire DC Application	<p><b>Female</b></p> <p><b>Male</b></p>
	<b>BKF 8-8-*</b>	<b>BSF 8-8-*</b>	8x20 AWG, 105 °C, 125 VAC/VDC, 7 A, 8-Wire DC Application	<p><b>Female</b></p> <p><b>Male</b></p>
<p><b>BSF ..(5-8 pin)</b></p>				

We reserve the right to make technical alterations without prior notice.

\* Length in meters. Standard lead length is 0.5 meters. Consult factory for other lengths.  
Standard housing material is nickel plated brass.  
To specify PVC jacketed cable, add "/S717" to the end of the part number.



## 12, 14 and 19-Pin Receptacles, Front Mount

- For use with Junction Box Home Run Cables
- IEC IP67 Protection



Connector Style	Female Part Number	Male Part Number	Features	Pinout
	<b>BKF 12-12-*</b>	<b>BSF 12-12-*</b>	12x24 AWG, 105 °C, 125 VAC/VDC, 4 A, mates with 12-pin connectors, 12 conductors	<p><b>Female</b></p> <p><b>Male</b></p>
	<b>BKF 14-10-*</b>	<b>BSF 14-10-*</b>	10x24 AWG, 105 °C, 30 VAC/VDC, 3 A, mates with 14-pin connectors, 10 conductors	<p><b>Female</b></p>
	<b>BKF 14-12-*</b>	<b>BSF 14-12-*</b>	12x24 AWG, 105 °C, 30 VAC/VDC, 3 A, mates with 14-pin connectors, 12 conductors	<p><b>Female</b></p> <p><b>Male</b></p>
	<b>BKF 14-14-*</b>	<b>BSF 14-14-*</b>	14x24 AWG, 105 °C, 30 VAC/VDC, 3 A, mates with 14-pin connectors, 14 conductors	<p><b>Female</b></p> <p><b>Male</b></p>
	<b>BKF 19-19-*</b>	<b>BSF 19-19-*</b>	19x24 AWG, 105 °C, 30 VAC/VDC, 3 A, mates with 19-pin connectors, 19 conductors	<p><b>Female</b></p> <p><b>Male</b></p>

We reserve the right to make technical alterations without prior notice.

Receptacles

\* Length in meters. Standard lead length is 0.5 meters. Consult factory for other lengths. Standard housing material is nickel plated brass. To specify PVC jacketed cable, add "/S717" to the end of the part number.

• IEC IP67 Protection



Connector Style	Female Part Number	Male Part Number	Features	Pinout
<p><b>BKF .. M18 (5-8 pin)</b></p> <p>Typical panel cutout is 18.6 mm</p>	<b>BKF 5-5-*/M18</b>	<b>BSF 5-5-*/M18</b>	5x18 AWG, 105 °C, 300 VAC/VDC, 8 A, 5-wire DC application	<p><b>Female</b></p> <p><b>Male</b></p>
	<b>BKF 6-6-*/M18</b>	<b>BSF 6-6-*/M18</b>	6x18 AWG, 105 °C, 300 VAC/VDC, 7 A, 6-wire DC application	<p><b>Female</b></p> <p><b>Male</b></p>
	<b>BKF 7-7-*/M18</b>	<b>BSF 7-7-*/M18</b>	7x18 AWG, 105 °C, 125 VAC/VDC, 7 A, 7-wire DC application	<p><b>Female</b></p> <p><b>Male</b></p>
	<b>BKF 8-8-*/M18</b>	<b>BSF 8-8-*/M18</b>	8x18 AWG, 105 °C, 125 VAC/VDC, 7 A, 8-wire DC application	<p><b>Female</b></p> <p><b>Male</b></p>

We reserve the right to make technical alterations without prior notice.

\* Length in meters. Standard lead length is 0.5 meters. Consult factory for other lengths.  
 Standard housing material is nickel plated brass "BSF.." and "BSFV.." indicates stainless steel.  
 To specify PVC jacketed cable, add "/S717" to the end of the part number.

12, 14 and 19-Pin Receptacles, Front Mount, M18 Threads

- For use with Junction Box Home Run Cables
- IEC IP67 Protection



Connector Style	Female Part Number	Male Part Number	Features	Pinout		
<p><b>BKF .. M18 (12, 14, 19 pin)</b></p> <p>Typical panel cutout is 18.6 mm</p>	<b>BKF 12-12-*/M18</b>	<b>BSF 12-12-*/M18</b>	12x22 AWG, 105 °C, 125 VAC/VDC, 4 A, mates with 12-pin connectors, 12 conductors	A. BN B. BU C. WH D. GN E. YE F. GY G. PK H. RD J. BK K. OG L. TN M. VT	<p><b>Female</b></p> <p><b>Male</b></p>	
	<b>BKF 14-10-*/M18</b>	<b>BSF 14-10-*/M18</b>	10x22 AWG, 105 °C, 30 VAC/VDC, 3 A, mates with 14-pin connectors, 10 conductors	C. GY E. GN G. BK M. BN N. PK	O. YE P. WH R. RD S. VT U. BU	<p><b>Female</b></p>
	<b>BKF 14-12-*/M18</b>	<b>BSF 14-12-*/M18</b>	12x22 AWG 105 °C 30 VAC/VDC, 3 A mates with 14-pin connectors, 12 conductors	C. OG E. BK G. GN J. GY M. BN N. TN	O. VT P. RD R. WH S. YE T. PK U. BU	<p><b>Male</b></p>
	<b>BKF 14-14-*/M18</b>	<b>BSF 14-14-*/M18</b>	14x22 AWG, 105 °C, 30 VAC/VDC, 3 A, mates with 14-pin connectors, 14 conductors	A. BN C. RD/BU E. BK G. PK J. GN L. BU M. OG	N. GY/BN O. VT P. WH R. RD S. GY T. YE U. TN	<p><b>Female</b></p> <p><b>Male</b></p>
<p><b>BSF .. M18 (12, 14, 19 pin)</b></p> <p>Typical panel cutout is 18.6 mm</p>	<b>BKF 19-19-*/M18</b>	<b>BSF 19-19-*/M18</b>	19x22 AWG, 105 °C, 30 VAC/VDC, 3 A, mates with 19-pin connectors, 19 conductors	A. BU B. GY/PK C. RD/BU D. WH/GN E. BK F. BN/GN G. PK H. WH/YE I. GN K. YE/BN	L. BN M. OG N. GY/BN O. VT P. WH R. RD S. GY T. YE U. TN	<p><b>Female</b></p> <p><b>Male</b></p>

We reserve the right to make technical alterations without prior notice.

Receptacles

\* Length in meters. Standard lead length is 0.5 meters. Consult factory for other lengths. Standard housing material is nickel plated brass "BSF.." and "BSFV.." indicates stainless steel. To specify PVC jacketed cable, add "/S717" to the end of the part number.

• IEC IP67 Protection



Connector Style	Female Part Number	Male Part Number	Features	Pinout
<p><b>BKF ..M20 (5-8 pin)</b></p> <p>Typical panel cutout is 18.6 mm</p>	<b>BKF 5-5-*/M20</b>	<b>BSF 5-5-*/M20</b>	5x18 AWG, 105 °C, 300 VAC/VDC, 8 A, 5-Wire DC applications	<p><b>Female</b></p> <p><b>Male</b></p>
	<b>BKF 6-6-*/M20</b>	<b>BSF 6-6-*/M20</b>	6x18 AWG, 105 °C, 300 VAC/VDC, 7 A, 6-Wire DC applications	<p><b>Female</b></p> <p><b>Male</b></p>
<p><b>BSF ..M20 (5-8 pin)</b></p> <p>Typical panel cutout is 20.4 mm</p>	<b>BKF 7-7-*/M20</b>	<b>BSF 7-7-*/M20</b>	7x18 AWG, 105 °C, 125 VAC/VDC, 7 A, 7-Wire DC applications	<p><b>Female</b></p> <p><b>Male</b></p>
	<b>BKF 8-8-*/M20</b>	<b>BSF 8-8-*/M20</b>	8x18 AWG, 105 °C, 125 VAC/VDC, 7 A, 8-Wire DC applications	<p><b>Female</b></p> <p><b>Male</b></p>

We reserve the right to make technical alterations without prior notice.

\* Length in meters. Standard lead length is 0.5 meters. Consult factory for other lengths.  
 Standard housing material is nickel plated brass "BSF.." and "BSFV.." indicates stainless steel.  
 To specify PVC jacketed cable, add "/S717" to the end of the part number.

12, 14 and 19-Pin Receptacles, Front Mount, M20 Threads

- For use with Junction Box Home Run Cables
- IEC IP67 Protection



Connector Style	Female Part Number	Male Part Number	Features	Pinout
<p><b>BKF ..M20 (12, 14, 19 pin)</b></p> <p>Typical panel cutout is 18.6 mm</p>	<b>BKF 12-12-*/M20</b>	<b>BSF 12-12-*/M20</b>	12x22 AWG, 105 °C, 125 VAC/VDC, 4 A, mates with 12-pin connectors, 12 conductors	<p><b>Female</b></p> <p><b>Male</b></p>
	<b>BKF 14-10-*/M20</b>	<b>BSF 14-10-*/M20</b>	10x22 AWG, 105 °C, 30 VAC/VDC, 3 A, mates with 14-pin connectors, 10 conductors	<p><b>Female</b></p>
<p><b>BSF ..M20 (12, 14, 19 pin)</b></p> <p>Typical panel cutout is 20.4 mm</p>	<b>BKF 14-12-*/M20</b>	<b>BSF 14-12-*/M20</b>	12x22 AWG, 105 °C, 30 VAC/VDC, 3 A, mates with 14-pin connectors, 12 conductors	<p><b>Female</b></p> <p><b>Male</b></p>
	<b>BKF 14-14-*/M20</b>	<b>BSF 14-14-*/M20</b>	14x22 AWG, 105 °C, 30 VAC/VDC, 3 A, mates with 14-pin connectors, 14 conductors	<p><b>Female</b></p> <p><b>Male</b></p>
	<b>BKF 19-19-*/M20</b>	<b>BSF 19-19-*/M20</b>	19x22 AWG, 105 °C, 30 VAC/VDC, 3 A, mates with 19-pin connectors, 19 conductors	<p><b>Female</b></p> <p><b>Male</b></p>

We reserve the right to make technical alterations without prior notice.

Receptacles

\* Length in meters. Standard lead length is 0.5 meters. Consult factory for other lengths. Standard housing material is nickel plated brass "BSF.." and "BSFV.." indicates stainless steel. To specify PVC jacketed cable, add "/S717" to the end of the part number.

• IEC IP67 Protection



Connector Style	Female Part Number	Male Part Number	Features	Pinout
<p><b>BKF ..1/2-14 NPT (5-8 pin)</b></p> <p>Typical panel cutout is 17.5 mm</p>	<b>BKF 5-5-*/14.5/NPT</b>	<b>BSF 5-5-*/14.5/NPT</b>	5x18 AWG, 105 °C, 300 VAC/VDC, 8 A, 5-Wire DC applications	<p><b>Female</b></p> <p><b>Male</b></p>
	<b>BKF 6-6-*/14.5/NPT</b>	<b>BSF 6-6-*/14.5/NPT</b>	6x18 AWG, 105 °C, 300 VAC/VDC, 7 A, 6-Wire DC applications	<p><b>Female</b></p> <p><b>Male</b></p>
<p><b>BSF ..1/2-14 NPT (5-8 pin)</b></p> <p>Typical panel cutout is 22.5 mm</p>	<b>BKF 7-7-*/14.5/NPT</b>	<b>BSF 7-7-*/14.5/NPT</b>	7x18 AWG, 105 °C, 125 VAC/VDC, 7 A, 7-Wire DC applications	<p><b>Female</b></p> <p><b>Male</b></p>
	<b>BKF 8-8-*/14.5/NPT</b>	<b>BSF 8-8-*/14.5/NPT</b>	8x18 AWG, 105 °C, 125 VAC/VDC, 7 A, 8-Wire DC applications	<p><b>Female</b></p> <p><b>Male</b></p>

We reserve the right to make technical alterations without prior notice.

\* Length in meters. Standard lead length is 0.5 meters. Consult factory for other lengths.  
 Standard housing material is nickel plated brass "BSF.." and "BSFV.." indicates stainless steel.  
 To specify PVC jacketed cable, add "/S717" to the end of the part number.



## 12, 14 and 19-Pin Receptacles, Front Mount, 1/2-14 NPT Threads

- For use with Junction Box Home Run Cables
- IEC IP67 Protection



Connector Style	Female Part Number	Male Part Number	Features	Pinout	
<p><b>BKF ..1/2-14 NPT (12, 14, 19 pin)</b></p>	<b>BKF 12-12-*/14.5/NPT</b>	<b>BSF 12-12-*/14.5/NPT</b>	12x22 AWG, 105 °C, 125 VAC/VDC, 4 A, mates with 12-pin connectors, 12 conductors	A. BN      G. PK B. BU      H. RD C. WH      J. BK D. GN      K. OG E. YE      L. TN F. GY      M. VT	<p><b>Female</b></p> <p><b>Male</b></p>
				<b>BKF 14-10-*/14.5/NPT</b> <b>BSF 14-10-*/14.5/NPT</b>	10x22 AWG, 105 °C, 30 VAC/VDC, 3 A, mates with 14-pin connectors, 10 conductors
<p><b>BSF ..1/2-14 NPT (12, 14, 19 pin)</b></p>	<b>BKF 14-12-*/14.5/NPT</b>	<b>BSF 14-12-*/14.5/NPT</b>	12x22 AWG, 105 °C, 30 VAC/VDC, 3 A, mates with 14-pin connectors, 12 conductors	C. OG      O. VT E. BK      P. RD G. GN      R. WH J. GY      S. YE M. BN      T. PK N. TN      U. BU	<p><b>Male</b></p>
				<b>BKF 14-14-*/14.5/NPT</b> <b>BSF 14-14-*/14.5/NPT</b>	14x22 AWG, 105 °C, 30 VAC/VDC, 3 A, mates with 14-pin connectors, 14 conductors
<p><b>BSF ..1/2-14 NPT (12, 14, 19 pin)</b></p>	<b>BKF 19-19-*/14.5/NPT</b>	<b>BSF 19-19-*/14.5/NPT</b>	19x22 AWG, 105 °C, 30 VAC/VDC, 3 A, mates with 19-pin connectors, 19 conductors	A. BU      L. BN B. GY/PK    M. OG C. RD/BU    N. GY/BN D. WH/GN    O. VT E. BK      P. WH F. BN/GN    R. RD G. PK      S. GY H. WH/YE    T. YE I. GN      U. TN K. YE/BN	<p><b>Female</b></p> <p><b>Male</b></p>

We reserve the right to make technical alterations without prior notice.

Receptacles

\* Length in meters. Standard lead length is 0.5 meters. Consult factory for other lengths. Standard housing material is nickel plated brass "BSF.." and "BSFV.." indicates stainless steel. To specify PVC jacketed cable, add "/S717" to the end of the part number.

• IEC IP67 Protection



Connector Style	Female Part Number	Male Part Number	Features	Pinout
<p><b>BKF ..3/8-18 NPT (5-8 pin)</b></p> <p>Typical panel cutout is 17.5 mm</p>	<b>BKF 5-5-*/18.375/NPT</b>	<b>BSF 5-5-*/18.375/NPT</b>	5x18 AWG, 105 °C, 300 VAC/VDC, 8 A, 5-Wire DC applications	<p><b>Female</b></p> <p><b>Male</b></p>
<p><b>BKF 6-6-*/18.375/NPT</b></p> <p>Typical panel cutout is 17.5 mm</p>	<b>BKF 6-6-*/18.375/NPT</b>	<b>BSF 6-6-*/18.375/NPT</b>	6x18 AWG, 105 °C, 300 VAC/VDC, 7 A, 6-Wire DC applications	<p><b>Female</b></p> <p><b>Male</b></p>
<p><b>BSF ..3/8-18 NPT (5-8 pin)</b></p> <p>Typical panel cutout is 17.5 mm</p>	<b>BKF 7-7-*/18.375/NPT</b>	<b>BSF 7-7-*/18.375/NPT</b>	7x18 AWG, 105 °C, 125 VAC/VDC, 7 A, 7-Wire DC applications	<p><b>Female</b></p> <p><b>Male</b></p>
<p><b>BSF 8-8-*/18.375/NPT</b></p> <p>Typical panel cutout is 17.5 mm</p>	<b>BKF 8-8-*/18.375/NPT</b>	<b>BSF 8-8-*/18.375/NPT</b>	8x18 AWG, 105 °C, 125 VAC/VDC, 7 A, 8-Wire DC applications	<p><b>Female</b></p> <p><b>Male</b></p>

We reserve the right to make technical alterations without prior notice.

\* Length in meters. Standard lead length is 0.5 meters. Consult factory for other lengths.  
Standard housing material is nickel plated brass "BSF..".  
To specify PVC jacketed cable, add "/S717" to the end of the part number.

## 12, 14 and 19-Pin Receptacles, Front Mount, 3/8-18 NPT Threads

- For use with Junction Box Home Run Cables
- IEC IP67 Protection



Connector Style	Female Part Number	Male Part Number	Features	Pinout	
<p><b>BKF ..3/8-18 NPT (12, 14, 19 pin)</b></p> <p>Typical panel cutout is 17.5 mm</p>	<b>BKF 12-12-*/18.375/NPT</b>	<b>BSF 12-12-*/18.375/NPT</b>	12x22 AWG, 105 °C, 125 VAC/VDC, 4 A, mates with 12-pin connectors, 12 conductors	<p><b>Female</b></p> <p>A. BN    G. PK B. BU    H. RD C. WH    J. BK D. GN    K. OG E. YE    L. TN F. GY    M. VT</p> <p><b>Male</b></p>	
				<p><b>BKF 14-10-*/18.375/NPT</b></p>	<b>BSF 14-10-*/18.375/NPT</b>
<p><b>BKF 14-12-*/18.375/NPT</b></p>	<b>BSF 14-12-*/18.375/NPT</b>	12x22 AWG, 105 °C, 30 VAC/VDC, 3 A, mates with 14-pin connectors, 12 conductors	<p><b>Female</b></p> <p>C. OG    O. VT E. BK    P. RD G. GN    R. WH J. GY    S. YE M. BN    T. PK N. TN    U. BU</p> <p><b>Male</b></p>		
			<p><b>BSF ..3/8-18 NPT (12, 14, 19 pin)</b></p> <p>Typical panel cutout is 17.5 mm</p>	<b>BKF 14-14-*/18.375/NPT</b>	<b>BSF 14-14-*/18.375/NPT</b>
<p><b>BKF 19-19-*/18.375/NPT</b></p>	<b>BSF 19-19-*/18.375/NPT</b>	19x22 AWG, 105 °C, 30 VAC/VDC, 3 A, mates with 19-pin connectors, 19 conductors			

We reserve the right to make technical alterations without prior notice.

Receptacles

\* Length in meters. Standard lead length is 0.5 meters. Consult factory for other lengths. Standard housing material is nickel plated brass "BSF..". To specify PVC jacketed cable, add "/S717" to the end of the part number.

## 5 - 8 Wire Receptacles, Rear Mount

• IEC IP67 Protection



Connector Style	Female Part Number	Male Part Number	Features	Pinout
<p><b>BKFD .. (5-8 pin)</b></p> <p>Typical panel cutout is 18 x 17 mm</p>	<b>BKFD 5-5-*</b>	<b>BSFD 5-5-*</b>	5x20 AWG, 105 °C, 300 VAC/VDC, 8 A, 5-Wire DC application	<p><b>Female</b></p> <p><b>Male</b></p>
	<b>BKFD 6-6-*</b>	<b>BSFD 6-6-*</b>	6x20 AWG, 105 °C, 300 VAC/VDC, 7 A, 6-Wire DC application	<p><b>Female</b></p> <p><b>Male</b></p>
	<b>BKFD 7-7-*</b>	<b>BSFD 7-7-*</b>	7x20 AWG, 105 °C, 125 VAC/VDC, 7 A, 7-Wire DC application	<p><b>Female</b></p> <p><b>Male</b></p>
	<b>BKFD 8-8-*</b>	<b>BSFD 8-8-*</b>	8x20 AWG, 105 °C, 125 VAC/VDC, 7 A, 8-Wire DC application	<p><b>Female</b></p> <p><b>Male</b></p>

We reserve the right to make technical alterations without prior notice.

\* Length in meters. Standard lead lengths is 0.5 meters. Consult factory for other lengths.  
 Standard housing material is nickel plated brass.  
 To specify PVC jacketed cable, add "/S717" to the end of the part number.



## 12, 14 and 19-Pin Receptacles, Rear Mount

- For use with Junction Box Home Run Cables
- IEC IP67 Protection



Connector Style	Female Part Number	Male Part Number	Features	Pinout
<p><b>BKFD ..(12, 14, 19 pin)</b></p> <p>Typical panel cutout is 18 x 17 mm</p>	<b>BKFD 12-12-*</b>	<b>BSFD 12-12-*</b>	12x24 AWG, 105 °C, 125 VAC/VDC, 4 A, mates with 12-pin connectors, 12 conductors	<p><b>Female</b></p> <p><b>Male</b></p>
	<b>BKFD 14-10-*</b>	<b>BSFD 14-10-*</b>	10x24 AWG, 105 °C, 30 VAC/VDC, 3 A, mates with 14-pin connectors, 10 conductors	<p><b>Female</b></p>
<p><b>BSFD ..(12, 14, 19 pin)</b></p> <p>Typical panel cutout is 18 x 17 mm</p>	<b>BKFD 14-12-*</b>	<b>BSFD 14-12-*</b>	12x24 AWG, 105 °C, 30 VAC/VDC, 3 A, mates with 14-pin connectors, 12 conductors	<p><b>Female</b></p> <p><b>Male</b></p>
	<b>BKFD 14-14-*</b>	<b>BSFD 14-14-*</b>	14x24 AWG, 105 °C, 30 VAC/VDC, 3 A, mates with 14-pin connectors, 14 conductors	<p><b>Female</b></p> <p><b>Male</b></p>
<p><b>BSFD ..(12, 14, 19 pin)</b></p> <p>Typical panel cutout is 18 x 17 mm</p>	<b>BKFD 19-19-*</b>	<b>BSFD 19-19-*</b>	19x24 AWG, 105 °C, 30 VAC/VDC, 3 A, mates with 19-pin connectors, 19 conductors	<p><b>Female</b></p> <p><b>Male</b></p>

We reserve the right to make technical alterations without prior notice.

Receptacles

\* Length in meters. Standard lead lengths is 0.5 meters. Consult factory for other lengths. Standard housing material is nickel plated brass. To specify PVC jacketed cable, add "/S717" to the end of the part number.

• IEC IP67 Protection



Connector Style	Female Part Number	Male Part Number	Features	Pinout
<p><b>BKFD.. M18 (5-8 pin)</b></p> <p>Typical panel cutout is 18.6 mm</p>	<b>BKFD 5-5-*/M18</b>	<b>BSFD 5-5-*/M18</b>	5x18 AWG, 105 °C, 300 VAC/VDC, 8 A, 5-Wire DC applications	<p><b>Female</b></p> <p><b>Male</b></p>
	<b>BKFD 6-6-*/M18</b>	<b>BSFD 6-6-*/M18</b>	6x18 AWG, 105 °C, 300 VAC/VDC, 7 A, 6-Wire DC applications	<p><b>Female</b></p> <p><b>Male</b></p>
	<b>BKFD 7-7-*/M18</b>	<b>BSFD 7-7-*/M18</b>	7x18 AWG, 105 °C, 125 VAC/VDC, 7 A, 7-Wire DC applications	<p><b>Female</b></p> <p><b>Male</b></p>
	<b>BKFD 8-8-*/M18</b>	<b>BSFD 8-8-*/M18</b>	8x18 AWG, 105 °C, 125 VAC/VDC, 7 A, 8-Wire DC applications	<p><b>Female</b></p> <p><b>Male</b></p>

We reserve the right to make technical alterations without prior notice.

\* Length in meters. Standard lead length is 0.5 meter. Consult factory for other lengths.  
 Standard housing material is nickel plated brass. "BSFDV.." indicates stainless steel.  
 To specify PVC jacketed cable, add "/S717" to the end of the part number.

12, 14 and 19-Pin Receptacles, Rear Mount, M18 Threads

• IEC IP67 Protection



Connector Style	Female Part Number	Male Part Number	Features	Pinout		
<p><b>BKFD .. M18 (12, 14, 19 pin)</b></p> <p>Typical panel cutout is 18.6 mm</p>	<b>BKFD 12-12-*/M18</b>	<b>BSFD 12-12-*/M18</b>	12x22 AWG, 105 °C, 125 VAC/VDC, 4 A, mates with 12-pin connectors, 12 conductors	A. BN B. BU C. WH D. GN E. YE F. GY	G. PK H. RD J. BK K. OG L. TN M. VT	<p><b>Female</b></p> <p><b>Male</b></p>
	<b>BKFD 14-10-*/M18</b>	<b>BSFD 14-10-*/M18</b>	10x22 AWG, 105 °C, 30 VAC/VDC, 3 A, mates with 14-pin connectors, 10 conductors	C. GY E. GN G. BK M. BN N. PK	O. YE P. WH R. RD S. VT U. BU	<p><b>Female</b></p>
	<b>BKFD 14-12-*/M18</b>	<b>BSFD 14-12-*/M18</b>	12x22 AWG, 105 °C, 30 VAC/VDC, 3 A, mates with 14-pin connectors, 12 conductors	C. OG E. BK G. GN J. GY M. BN N. TN	O. VT P. RD R. WH S. YE T. PK U. BU	<p><b>Male</b></p>
	<b>BKFD 14-14-*/M18</b>	<b>BSFD 14-14-*/M18</b>	14x22 AWG, 105 °C, 30 VAC/VDC, 3 A, mates with 14-pin connectors, 14 conductors	A. BN C. RD/BU E. BK G. PK J. GN L. BU M. OG	N. GY/BN O. VT P. WH R. RD S. GY T. YE U. TN	<p><b>Male</b></p>
<p><b>BSFD.. M18 (12, 14, 19 pin)</b></p> <p>Typical panel cutout is 18.6 mm</p>	<b>BKFD 19-19-*/M18</b>	<b>BSFD 19-19-*/M18</b>	19x22 AWG, 105 °C, 30 VAC/VDC, 3 A, mates with 19-pin connectors, 19 conductors	A. BU B. GY/PK C. RD/BU D. WH/GN E. BK F. BN/GN G. PK H. WH/YE I. GN K. YE/BN	L. BN M. OG N. GY/BN O. VT P. WH R. RD S. GY T. YE U. TN	<p><b>Female</b></p> <p><b>Male</b></p>

We reserve the right to make technical alterations without prior notice.

Receptacles

\* Length in meters. Standard lead length is 0.5 meter. Consult factory for other lengths. Standard housing material is nickel plated brass. "BSFDV.." indicates stainless steel. To specify PVC jacketed cable, add "/S717" to the end of the part number.

## 5 - 8 Pin Receptacles, Rear Mount, PCB Pins

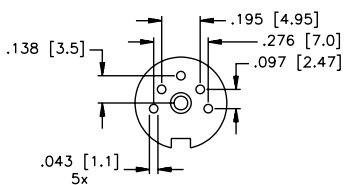
- Locknuts and O-rings included
- Easy Keyway Orientation
- IEC IP67 Protection



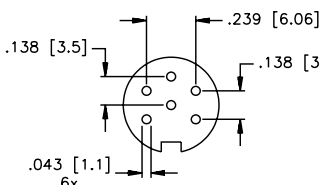
Connector Style	Female Part Number	Male Part Number	Features	Pinout
	<b>BKFD 5-PCB</b>	<b>BSFD 5-PCB</b>	Nickel plated brass, 5-pin PCB pins, 105 °C, 60 V, 5 A, M18 x .75 threads, mates with 5-pin cordsets	
	<b>BKFD 6-PCB</b>	<b>BSFD 6-PCB</b>	Nickel plated brass, 5-pin PCB pins, 105 °C, 250 V, 5 A, M18 x .75 threads, mates with 6-pin cordsets	
	<b>BKFD 7-PCB</b>	<b>BSFD 7-PCB</b>	Nickel plated brass, 5-pin PCB pins, 105 °C, 60 V, 5 A, M18 x .75 threads, mates with 7-pin cordsets	
	<b>BKFD 8-PCB</b>	<b>BSFD 8-PCB</b>	Nickel plated brass, 5-pin PCB pins, 105 °C, 60 V, 5 A, M18 x .75 threads, mates with 8-pin cordsets	

We reserve the right to make technical alterations without prior notice.

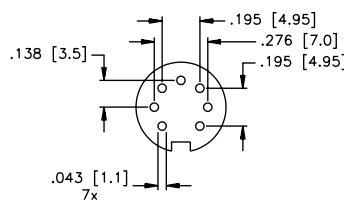
5-Pin PCB Layout



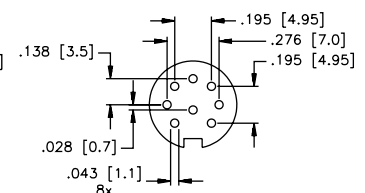
6-Pin PCB Layout



7-Pin PCB Layout



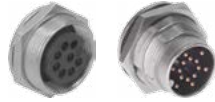
8-Pin PCB Layout





12, 14 and 19-Pin Receptacles, Rear Mount, PCB Pins

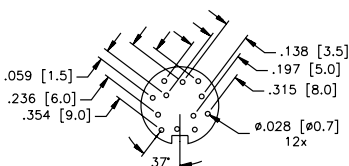
- Locknuts and O-rings included
- Easy Keyway Orientation
- IEC IP67 Protection



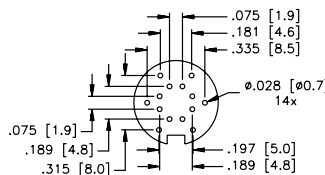
We reserve the right to make technical alterations without prior notice.

Connector Style	Female Part Number	Male Part Number	Features	Pinout
<p><b>BKFD ..PCB (12, 14, 19 pin)</b></p>	<b>BKFD 12-PCB</b>	<b>BSFD 12-PCB</b>	Nickel plated brass, 12-pin PCB pins, 105 °C, 60 V, 3 A, M18 x .75 threads, mates with 12-pin cordsets	<p><b>Female</b></p> <p><b>Male</b></p>
	<b>BKFD 14-PCB</b>	<b>BSFD 14-PCB</b>	Nickel plated brass, 14-pin PCB pins, 105 °C, 60 V, 3 A, M18 x .75 threads, mates with 14-pin cordsets	<p><b>Female</b></p> <p><b>Male</b></p>
<p><b>BSFD ..PCB (12, 14, 19 pin)</b></p>	<b>BKFD 19-PCB</b>	<b>BSFD 19-PCB</b>	Nickel plated brass, 19-pin PCB pins, 105 °C, 60 V, 3 A, M18 x .75 threads, mates with 19-pin cordsets	<p><b>Female</b></p> <p><b>Male</b></p>

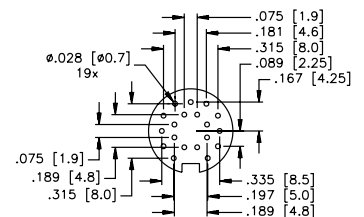
5-Pin PCB Layout



7-Pin PCB Layout



8-Pin PCB Layout



Receptacles

## 12, 14 and 19-Pin Receptacles, Solder Cups, Front and Rear Mount

- Facilitates Field Replacements



Connector Style	Female Part Number	Male Part Number	Features	Pinout
<p><b>BKF (12, 14, 19 pin)</b></p>	<b>BKF 12</b>	<b>BSF 12</b>	Nickel plated brass, solder cup, accepts up to 12x24 AWG conductors, 95 °C, 125 V, 4 A, mates with Picofast® junction boxes, front mount	<p><b>Female</b></p>
	<b>BKFD 12</b>	<b>BSFD 12</b>	Nickel plated brass, solder cup, accepts up to 12x24 AWG conductors, 95 °C, 125 V, 3 A, mates with Picofast junction boxes, rear mount	<p><b>Male</b></p>
<p><b>BKFD (12, 14, 19 pin)</b></p>	<b>BKF 14</b>	<b>BSF 14</b>	Nickel plated brass, solder cup, accepts up to 14x24 AWG conductors, 95 °C, 125 V, 3 A, mates with Picofast junction boxes, front mount	<p><b>Female</b></p>
	<b>BKFD 14</b>	<b>BSFD 14</b>	Nickel plated brass, solder cup, accepts up to 14x24 AWG conductors, 95 °C, 125 V, 3 A, mates with Picofast junction boxes, rear mount	<p><b>Male</b></p>
<p><b>BSF (12, 14, 19 pin)</b></p>	<b>BKF 19</b>	<b>BSF 19</b>	Nickel plated brass, solder cup, accepts up to 19x24 AWG conductors, 95 °C, 125 V, 3 A, mates with Picofast junction boxes, front mount	<p><b>Female</b></p>
<p><b>BSFD (12, 14, 19 pin)</b></p>	<b>BKFD 19</b>	<b>BSFD 19</b>	Nickel plated brass, solder cup, accepts up to 19x24 AWG conductors, 95 °C, 30 V, 3 A, mates with Picofast junction boxes, rear mount	<p><b>Male</b></p>

We reserve the right to make technical alterations without prior notice.

## 5 - 8 Pin Field Wireable, In-line Connectors

- For use with Custom Wiring or Junction Boxes
- IEC IP67 Protection



Connector Style	Female Part Number	Male Part Number	Features	Pinout
	<b>BK 5-0</b>	<b>BS 5-0</b>	Nylon PG 9 cable gland, accepts 6-8 mm cable diameter, solder cup, accepts up to 5x18 AWG conductors, 85 °C, 60 VAC/DC, 6 A, Mates with 5-pin cordsets and receptacles	<p><b>Female</b></p> <p><b>Male</b></p>
	<b>BK 6-0</b>	<b>BS 6-0</b>	Nylon PG 9 cable gland, accepts 6-8 mm cable diameter, solder cup, accepts up to 6x18 AWG conductors, 85 °C, 60 VAC/DC, 3 A, Mates with 6-pin cordsets and receptacles	<p><b>Female</b></p> <p><b>Male</b></p>
	<b>BK 7-0</b>	<b>BS 7-0</b>	Nylon PG 9 cable gland, accepts 6-8 mm cable diameter, solder cup, accepts up to 7x18 AWG conductors, 85 °C, 60 VAC/DC, 3 A, Mates with 7-pin cordsets and receptacles	<p><b>Female</b></p> <p><b>Male</b></p>
	<b>BK 8-0</b>	<b>BS 8-0</b>	Nylon PG 9 cable gland, accepts 6-8 mm cable diameter, solder cup, accepts up to 8x18 AWG conductors, 85 °C, 60 VAC/DC, 3 A, Mates with 8-pin cordsets and receptacles	<p><b>Female</b></p> <p><b>Male</b></p>

We reserve the right to make technical alterations without prior notice.

Accessories

## 12-pin Field Wireable, In-line Connectors

- Standard Nylon and Shielded
- IEC IP67 Protection



Connector Style	Female Part Number	Male Part Number	Features	Pinout
<p><b>BK ..</b></p> <p><b>BS ..</b></p>	<b>BK 12-0</b>	<b>BS 12-0</b>	Nylon PG 9 cable gland, accepts 6-8 mm cable diameter solder cup, accepts up to 12x24 AWG conductors, 85 °C, 60 VDC/VAC, 3 A, mates with 12-pin cordsets and receptacles	<p><b>Female</b></p>
<p><b>BKS ..</b></p> <p><b>BSS ..</b></p>	<b>BKS 12-0</b>	<b>BSS 12-0</b>		

We reserve the right to make technical alterations without prior notice.

14 and 19-Pin Field Wireable, In-line Connectors

- Male Connectors
- For use with Custom Wiring or Junction Boxes
- IEC IP67 Protection



Connector Style	Female Part Number	Male Part Number	Features	Pinout
<p><b>BK ..</b></p>	<b>BK 14-0</b>	<b>BS 14-0</b>	Nylon PG 9 cable gland, accepts 6-8 mm cable diameter, solder cup, accepts up to 14x24 AWG conductors, 85 °C, 60 VAC/DC, 3 A, Mates with Picofast® junction boxes, unshielded	<p><b>Female</b></p> <p><b>Male</b></p>
<p><b>BS ..</b></p>	<b>BK 19-0</b>	<b>BS 19-0</b>	Nylon PG 9 cable gland, accepts 6-8 mm cable diameter, solder cup, accepts up to 19x24 AWG conductors, 85 °C, 60 VAC/DC, 3 A, Mates with Picofast junction boxes, unshielded	<p><b>Female</b></p> <p><b>Male</b></p>
<p><b>WBK ..</b></p>	<b>WBK 14-0</b>	<b>WBS 14-0</b>	Nylon PG 9 cable gland, accepts 6-8 mm cable diameter, solder cup, accepts up to 14x24 AWG conductors, 85 °C, 60 VAC/DC, 3 A, Mates with Picofast junction boxes, unshielded	<p><b>Female</b></p> <p><b>Male</b></p>
<p><b>WBS ..</b></p>	<b>WBK 19-0</b>	<b>WBS 19-0</b>	Nylon PG 9 cable gland, accepts 6-8 mm cable diameter, solder cup, accepts up to 19x24 AWG conductors, 85 °C, 60 VAC/DC, 3 A, Mates with Picofast junction boxes, unshielded	<p><b>Male</b></p>

We reserve the right to make technical alterations without prior notice.

Accessories

## Closure Caps



Connector Style	Part Number	Features
	<b>BKK-CC</b>	Nylon, M16 threads, 4 1/2 inch plastic lanyard and 3/4 inch loop, mates to male cordsets, receptacles, or junction boxes
	<b>BKFK-CC</b>	Nylon, M16 threads, 2 3/4 inch plastic lanyard and #10 eye-let, mates to male cordsets, receptacles, or junction boxes
	<b>BSK-CC</b>	Nylon, M16 threads, 4 1/2 inch plastic lanyard and 3/4 inch loop, mates to female cordsets, receptacles, or junction boxes
	<b>BSFK-CC</b>	Nylon, M16 threads, 2 3/4 inch plastic lanyard and #10 eye-let, mates to female cordsets, receptacles, or junction boxes
	<b>BKM-CC</b>	Nickel plated brass, M16 threads, 6" lanyard, mates with male cordsets and receptacles
	<b>BKF-CC</b>	Nickel plated brass, M16 threads, 6" lanyard with eyelet, mates with male cordsets and receptacles
	<b>BKM-MC</b>	Nickel plated brass, M16 threads, no lanyard, mates with male cordsets and receptacles
	<b>BSM-CC</b>	Nickel plated brass, M16 threads, 6" lanyard
	<b>BSF-CC</b>	Nickel plated brass, M16 threads, 6" lanyard with eyelet
	<b>BSM-MC</b>	Nickel plated brass, M16 threads, no lanyard

We reserve the right to make technical alterations without prior notice.