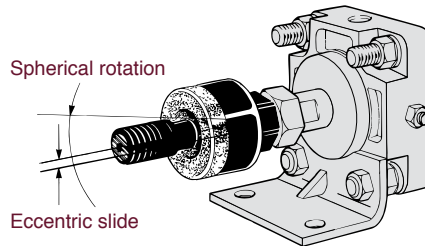




## Floating Joints - NJ Series

### Reduce Effects of Side Load due to Misalignment

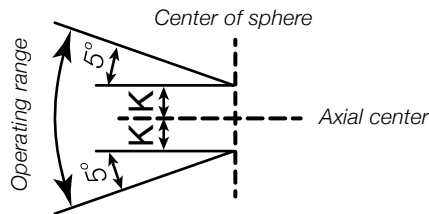
- Align deflected loads for longer cylinder life
- High level of machining accuracy is unnecessary
- Increased range for concentric misalignment
- Compact design suitable for high tensile stresses
- Spherical rotation operating range  $\pm 5^\circ$



#### REDUCE

Sideloading  
Misalignment  
Uneven Wear  
Piston Seal Leakage  
Inconsistent Travel Speed  
Internal Cylinder Damage

#### Operating Range



#### BENEFITS

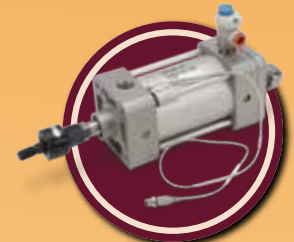
Decrease Maintenance Time  
Save Installation Time  
Aid Effective and Efficient Production  
Reduce Air Leaks  
Reduce Replacement Cylinder Costs



#### Compatible Cylinders



**NCG2**



**NCA1**



**NCM**



**NCG**

**NF283-B**

Related Products

Metric Threads



JC Lightweight Male Threads



JA Standard Male Threads



JS Stainless Steel Male Threads



SMC Corporation of America  
10100 SMC Blvd.  
Noblesville, IN 46060  
www.smcusa.com

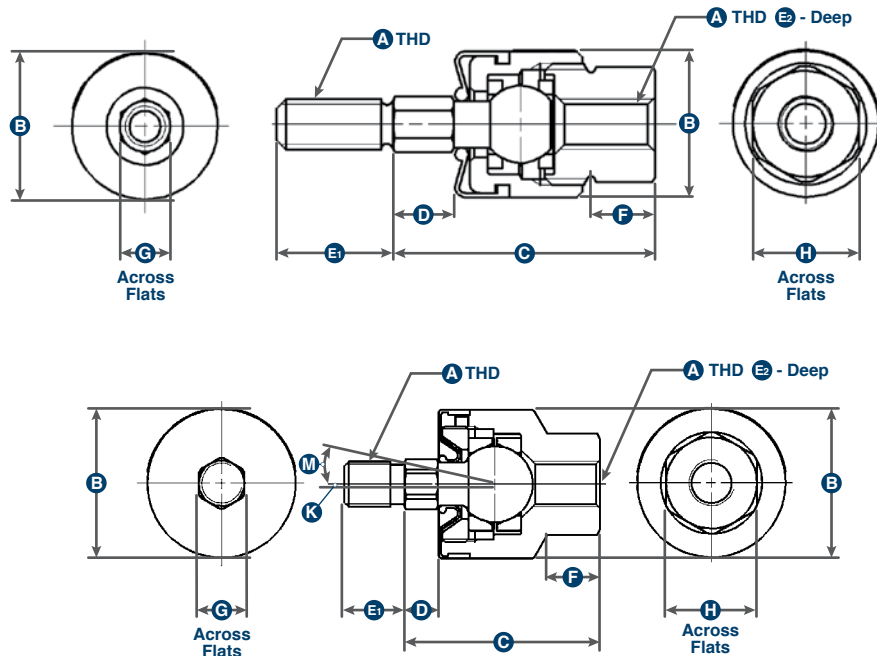
**(800) SMC.SMC1**  
**(800 - 762 - 7621)**

SMC Pneumatics (Canada) Ltd.  
www.smc Pneumatics.ca

e-mail: sales@smcusa.com  
For International inquires:  
www.smcworld.com

All reasonable efforts to ensure the accuracy of the information detailed in this flyer were made at the time of publishing. However, SMC can in no way warrant the information herein contained as specifications are subject to change without notice.

Dimensional Information



NJ5-40 6-40 8-32 10-32  
 NJ04 to NJ12

Model	A	Cylinder Max Pressure	Working Thrust (lbs)	B	C	D	E1	E2	F	G	H	K	M
NJ5-40	No.5-40 UNC	100 PSI (7 kgf/cm <sup>2</sup> )	110	0.47	0.82	0.22	0.38	0.27	0.21	0.31	0.31	0.02	5°
NJ6-40	No.6-40 UNF		140										
NJ8-32	No.8-32 UNF		175	0.47	0.85	0.22	0.38	0.3	0.21	0.15	0.34	0.02	
NJ10-32	No.10-32 UNF		250	0.63	1.16	0.23	0.63	0.5	0.22	0.38	0.38	0.02	
NJ04	1/4-28 UNF	150 PSI (9.9kgf/cm <sup>2</sup> )	760	0.94	1.38	0.25	0.5		0.41	0.31	0.56	0.03	
NJ05	5/16-24 UNF		1200										
NJ06	3/8-24 UNF		2500	1.22	1.61	0.28	0.5	0.43	0.38	0.75	0.03		
NJ07	7/16-20 UNF		2600	1.22	1.83	0.31	0.75	0.63	0.44	0.75	0.03		
NJ08	1/2-20 UNF		3500	1.61	2.11	0.31	0.75	0.63	0.5	1	0.06		
NJ10	5/8-18 UNF		6200	1.61	2.18	0.39	0.74	0.75	0.63	0.62	1	0.06	
NJ12	3/4-16 UNF		8500	1.97	2.91	0.5	1.13	0.94	0.81	1.13	0.06		

Care & Maintenance

- For applications other than air cylinder consult factory.
- Joint is not suitable for rotation applications.
- Do not reuse if disassembled.
- NJ floating joints are sealed and pre-lubricated.
- Ambient temperature range 40° to 140°F (5° to 60°C).
- Do not exceed an axial misalignment of 5°.
- Do not exceed an allowable eccentricity or the life of the joint could be shortened.
- For installation tighten completely and loosen 1 to 2 turns.

For CAD models: [www.smcusa.com/CAD](http://www.smcusa.com/CAD) Actuator Accessories>Floating Joint