

! Contact our sales office for delivery dates and prices as this is a special model.

Specialized Product

Point to Group
P.G. information

Pilot Check Valve with State Detection

XT34-303-□

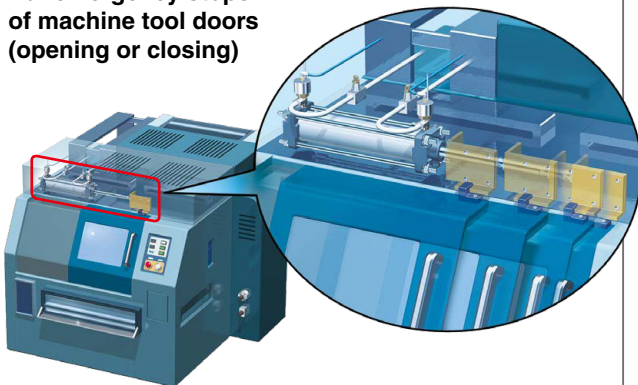
Features

- **The use of positive overlap ensures that signals are output only after the valve has closed completely.**
* Positive overlap: Structure that ensures a completely closed state by slightly displacing the position of the valve after it has fully closed (to eliminate the effects of hysteresis)
- **The open or closed position of the check valve is detected by the auto switch.**
- **Wide size variations**
Body size: 5 types
Port size: M5, G1/8, G1/4, G3/8, G1/2

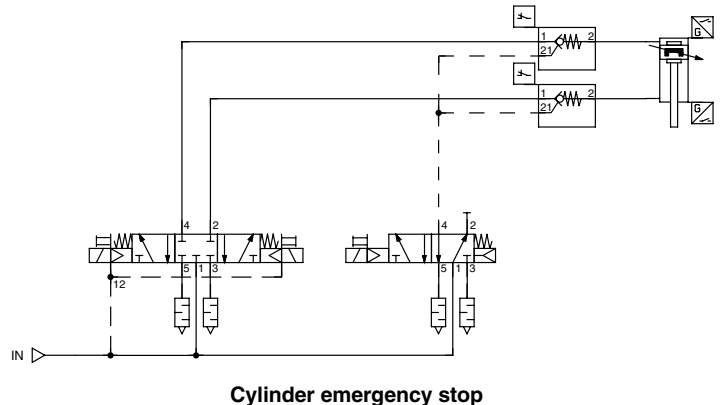


Application Example

For emergency stops of machine tool doors (opening or closing)



Circuit Example



Caution

To ensure the safest possible operation of this product, please be sure to thoroughly read the "Safety Instructions" in our "Best Pneumatics" catalog before use.

SMC Corporation 4-14-1, SOTO-KANDA, CHIYODA-KU, TOKYO 101-0021, JAPAN URL: <http://www.smcworld.com>
©2018 SMC Corporation All Rights Reserved



SP173X-020E
P: WX