

Protective conductor terminal - XTV 16-PE



1329674

<https://www.phoenixcontact.com/us/products/1329674>

Please be informed that the data shown in this PDF document is generated from our Online Catalog. Please find the complete data in the user documentation. Our General Terms of Use for Downloads are valid.



Protective conductor terminal, number of connections: 2, number of positions: 1, connection method: Push-X-connection, Rated cross section: 16 mm², cross section: 2.5 mm² - 25 mm², mounting type: NS 35/7,5, NS 35/15, color: green/yellow

Your advantages

- Fast, powerless conductor connection for all conductor types with the pretensioned contact spring
- A high level of flexibility when inserting conductors enables conductors with or without ferrules to be connected easily
- Clear conductor connection with the lateral connection direction and the clear pusher position
- Easy procurement of information – the QR code on the terminal block provides all important information about the product
- Terminal blocks with Push-X connection are part of the COMPLETE line system

Commercial Data

Item number	1329674
Packing unit	1 pc
Minimum order quantity	50 pc
Sales Key	B02
Product Key	BE2521
GTIN	4063151625320
Weight per Piece (including packing)	53.86 g
Weight per Piece (excluding packing)	52.5 g
Customs tariff number	85369010
Country of origin	CN

Protective conductor terminal - XTV 16-PE



1329674

<https://www.phoenixcontact.com/us/products/1329674>

Technical Data

Product properties

Product type	Ground terminal block
Number of positions	1
Area of application	Railway industry
	Machine building
	Plant engineering
Number of connections	2
Number of rows	1

Insulation characteristics

Overvoltage category	III
Degree of pollution	3

Electrical properties

Maximum power dissipation for nominal condition	0 W
---	-----

Connection data

Number of connections per level	2
Stripping length	18 mm ... 20 mm
Internal cylindrical gage	A7
	B7
Conductor cross section solid	2.5 mm ² ... 25 mm ²
Cross section AWG	14 ... 4
Conductor cross section flexible	4 mm ² ... 25 mm ²
Conductor cross section, flexible [AWG]	12 ... 4
Flexible conductor cross section flexible (ferrule, w/o plastic sleeve)	2.5 mm ² ... 16 mm ²
Flexible conductor cross section (ferrule with plastic sleeve)	2.5 mm ² ... 16 mm ²
Nominal cross section	16 mm ²

Dimensions

Width	12.2 mm
Height	49.8 mm
Height NS 35/15	58.8 mm
Height NS 35/7,5	51.3 mm
Length	77.2 mm

Material specifications

Color	green/yellow
Flammability rating according to UL 94	V0
Insulating material group	I
Insulating material	PA

Protective conductor terminal - XTV 16-PE



1329674

<https://www.phoenixcontact.com/us/products/1329674>

Static insulating material application in cold	-60 °C
Relative insulation material temperature index (Elec., UL 746 B)	130 °C
Fire protection for rail vehicles (DIN EN 45545-2) R22	HL 1 - HL 3
Fire protection for rail vehicles (DIN EN 45545-2) R23	HL 1 - HL 3
Fire protection for rail vehicles (DIN EN 45545-2) R24	HL 1 - HL 3
Fire protection for rail vehicles (DIN EN 45545-2) R26	HL 1 - HL 3
Surface flammability NFPA 130 (ASTM E 162)	passed
Specific optical density of smoke NFPA 130 (ASTM E 662)	passed
Smoke gas toxicity NFPA 130 (SMP 800C)	passed

Mechanical properties

Mechanical data

Open side panel	Yes
-----------------	-----

Environmental and real-life conditions

Oscillation/broadband noise

Specification	DIN EN 50155 (VDE 0115-200):2018-05
Spectrum	Service life test category 2, bogie-mounted
Frequency	$f_1 = 5 \text{ Hz}$ to $f_2 = 250 \text{ Hz}$
ASD level	6.12 (m/s ²) ² /Hz
Acceleration	3.12g
Test duration per axis	5 h
Test directions	X-, Y- and Z-axis
Result	Test passed

Shocks

Specification	DIN EN 50155 (VDE 0115-200):2018-05
Pulse shape	Half-sine
Acceleration	30g
Shock duration	18 ms
Number of shocks per direction	3
Test directions	X-, Y- and Z-axis (pos. and neg.)
Result	Test passed

Ambient conditions

Ambient temperature (operation)	-60 °C ... 105 °C (max. short-term operating temperature RTI Elec.)
Ambient temperature (storage/transport)	-25 °C ... 60 °C (for a short time, not exceeding 24 h, -60 °C to +70 °C)
Ambient temperature (assembly)	-5 °C ... 70 °C
Ambient temperature (actuation)	-5 °C ... 70 °C
Permissible humidity (storage/transport)	30 % ... 70 %

Standards and regulations

Connection in acc. with standard	IEC 60947-7-2
----------------------------------	---------------

Protective conductor terminal - XTV 16-PE



1329674

<https://www.phoenixcontact.com/us/products/1329674>

Mounting

Mounting type	NS 35/7,5
	NS 35/15

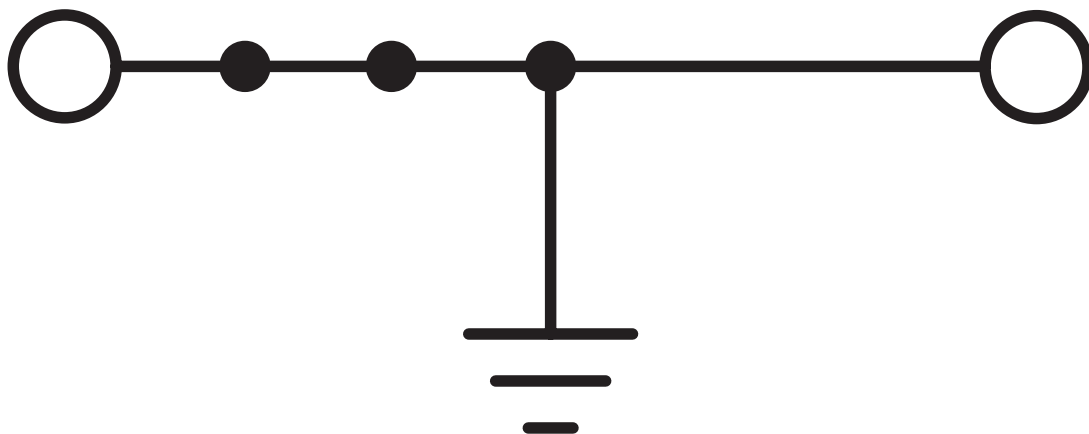
Protective conductor terminal - XTV 16-PE

1329674

<https://www.phoenixcontact.com/us/products/1329674>

Drawings

Circuit diagram




Protective conductor terminal - XTV 16-PE



1329674

<https://www.phoenixcontact.com/us/products/1329674>

Approvals

 cULus Recognized Approval ID: E60425				
	Nominal Voltage U_N	Nominal Current I_N	Cross Section AWG	Cross Section mm^2
Use group B			10 - 4	-
Use group C			10 - 4	-

Protective conductor terminal - XTV 16-PE



1329674

<https://www.phoenixcontact.com/us/products/1329674>

Classifications

ECLASS

ECLASS-11.0

27141141

ETIM

ETIM 8.0

EC000901

UNSPSC

UNSPSC 21.0

39121400

Protective conductor terminal - XTV 16-PE

1329674

<https://www.phoenixcontact.com/us/products/1329674>

Accessories

Plug-in bridge

Plug-in bridge - FBS 2-12 - 3005950

<https://www.phoenixcontact.com/us/products/3005950>



Plug-in bridge, pitch: 12 mm, color: red

Reducing bridge

Reducing bridge - RB ST 16-1,5/S - 3213254

<https://www.phoenixcontact.com/us/products/3213254>



Reducing bridge, pitch: 10 mm, color: red

Protective conductor terminal - XTV 16-PE

1329674

<https://www.phoenixcontact.com/us/products/1329674>

Reducing bridge

Reducing bridge - RB ST 16-(2,5/4) - 3030886

<https://www.phoenixcontact.com/us/products/3030886>



Reducing bridge, pitch: 11 mm, color: red

Reducing bridge

Reducing bridge - RB 35-16 - 3032169

<https://www.phoenixcontact.com/us/products/3032169>



Reducing bridge, pitch: 14 mm, color: red

Protective conductor terminal - XTV 16-PE

1329674

<https://www.phoenixcontact.com/us/products/1329674>

Reducing bridge

Reducing bridge - RB 16-6 - 3047072

<https://www.phoenixcontact.com/us/products/3047072>



Reducing bridge, pitch: 12.2 mm, color: red

Screwdriver

Screwdriver - SZF 1-0,6X3,5 - 1204517

<https://www.phoenixcontact.com/us/products/1204517>



Actuation tool, for ST terminal blocks, also suitable for use as a bladed screwdriver, size: 0.6 x 3.5 x 100 mm, 2-component grip, with non-slip grip

Protective conductor terminal - XTV 16-PE

1329674

<https://www.phoenixcontact.com/us/products/1329674>

End cover

End cover - D-XTV 16 - 1329675

<https://www.phoenixcontact.com/us/products/1329675>

End cover, length: 77.2 mm, width: 2.2 mm, height: 43.6 mm, color: gray



Screwdriver

Screwdriver - SZF 3-1,0X5,5 - 1206612

<https://www.phoenixcontact.com/us/products/1206612>

Actuation tool, for ST terminal blocks, also suitable for use as a bladed screwdriver, size: 1.0 x 5.5 x 150 mm, 2-component grip, with non-slip grip



Protective conductor terminal - XTV 16-PE

1329674

<https://www.phoenixcontact.com/us/products/1329674>

Ferrule

Ferrule - AI 4 -18 GY - 3200593

<https://www.phoenixcontact.com/us/products/3200593>

Ferrule, sleeve length: 18 mm, length: 26 mm, color: gray



Ferrule

Ferrule - AI 6 -18 YE - 3200603

<https://www.phoenixcontact.com/us/products/3200603>

Ferrule, sleeve length: 18 mm, length: 26 mm, color: yellow



Protective conductor terminal - XTV 16-PE

1329674

<https://www.phoenixcontact.com/us/products/1329674>

Ferrule

Ferrule - AI 10 -18 RD - 3200616

<https://www.phoenixcontact.com/us/products/3200616>

Ferrule, sleeve length: 18 mm, length: 28 mm, color: red



Ferrule

Ferrule - AI 16 -18 BU - 3200629

<https://www.phoenixcontact.com/us/products/3200629>

Ferrule, sleeve length: 18 mm, length: 28 mm, color: blue



Protective conductor terminal - XTV 16-PE

1329674

<https://www.phoenixcontact.com/us/products/1329674>

DIN rail perforated

DIN rail perforated - NS 35/ 7,5 PERF 2000MM - 0801733

<https://www.phoenixcontact.com/us/products/0801733>



DIN rail perforated, acc. to EN 60715, material: Steel, galvanized, passivated with a thick layer, Standard profile, color: silver, Pack of 25 (50 m)

DIN rail, unperforated

DIN rail, unperforated - NS 35/ 7,5 UNPERF 2000MM - 0801681

<https://www.phoenixcontact.com/us/products/0801681>



DIN rail, unperforated, acc. to EN 60715, material: Steel, galvanized, passivated with a thick layer, Standard profile, color: silver, Pack of 25 (50 m)

Protective conductor terminal - XTV 16-PE

1329674

<https://www.phoenixcontact.com/us/products/1329674>

DIN rail perforated

DIN rail perforated - NS 35/ 7,5 WH PERF 2000MM - 1204119

<https://www.phoenixcontact.com/us/products/1204119>



DIN rail perforated, acc. to EN 60715, material: Steel, Galvanized, white passivated, Standard profile, color: silver, Pack of 25 (50 m)

DIN rail, unperforated

DIN rail, unperforated - NS 35/ 7,5 WH UNPERF 2000MM-VPE 10 - 1204122

<https://www.phoenixcontact.com/us/products/1204122>



DIN rail, unperforated, acc. to EN 60715, material: Steel, Galvanized, white passivated, Standard profile, color: silver, Pack of 10 (20 m)

Protective conductor terminal - XTV 16-PE

1329674

<https://www.phoenixcontact.com/us/products/1329674>

DIN rail, unperforated

DIN rail, unperforated - NS 35/ 7,5 AL UNPERF 2000MM - 0801704

<https://www.phoenixcontact.com/us/products/0801704>



DIN rail, unperforated, acc. to EN 60715, material: Aluminum, uncoated, Standard profile, color: silver, Pack of 25 (50 m)

DIN rail perforated

DIN rail perforated - NS 35/ 7,5 ZN PERF 2000MM - 1206421

<https://www.phoenixcontact.com/us/products/1206421>



DIN rail perforated, acc. to EN 60715, material: Steel, galvanized, Standard profile, color: silver, Pack of 25 (50 m)

Protective conductor terminal - XTV 16-PE

1329674

<https://www.phoenixcontact.com/us/products/1329674>

DIN rail, unperforated

DIN rail, unperforated - NS 35/ 7,5 ZN UNPERF 2000MM - 1206434

<https://www.phoenixcontact.com/us/products/1206434>



DIN rail, unperforated, acc. to EN 60715, material: Steel, galvanized, Standard profile, color: silver, Pack of 25 (50 m)

DIN rail, unperforated

DIN rail, unperforated - NS 35/ 7,5 CU UNPERF 2000MM-VPE 10 - 0801762

<https://www.phoenixcontact.com/us/products/0801762>



DIN rail, unperforated, acc. to EN 60715, material: Copper, uncoated, Standard profile, color: copper-colored, Pack of 10 (20 m)

Protective conductor terminal - XTV 16-PE

1329674

<https://www.phoenixcontact.com/us/products/1329674>



End cap

End cap - NS 35/ 7,5 CAP - 1206560

<https://www.phoenixcontact.com/us/products/1206560>

DIN rail end piece, for DIN rail NS 35/7.5



DIN rail perforated

DIN rail perforated - NS 35/15 PERF 2000MM - 1201730

<https://www.phoenixcontact.com/us/products/1201730>



DIN rail perforated, similar to EN 60715, material: Steel, galvanized, passivated with a thick layer, Standard profile, color: silver, Pack of 25 (50 m)

Protective conductor terminal - XTV 16-PE

1329674

<https://www.phoenixcontact.com/us/products/1329674>

DIN rail, unperforated

DIN rail, unperforated - NS 35/15 UNPERF 2000MM - 1201714

<https://www.phoenixcontact.com/us/products/1201714>



DIN rail, unperforated, similar to EN 60715, material: Steel, galvanized, passivated with a thick layer, Standard profile, color: silver, Pack of 25 (50 m)

DIN rail perforated

DIN rail perforated - NS 35/15 WH PERF 2000MM - 0806602

<https://www.phoenixcontact.com/us/products/0806602>



DIN rail perforated, similar to EN 60715, material: Steel, Galvanized, white passivated, Standard profile, color: white, Pack of 25 (50 m)

Protective conductor terminal - XTV 16-PE

1329674

<https://www.phoenixcontact.com/us/products/1329674>

DIN rail, unperforated

DIN rail, unperforated - NS 35/15 WH UNPERF 2000MM-VPE 10 - 1204135

<https://www.phoenixcontact.com/us/products/1204135>



DIN rail, unperforated, similar to EN 60715, material: Steel, Galvanized, white passivated, Standard profile, color: silver, Pack of 10 (20 m)

DIN rail, unperforated

DIN rail, unperforated - NS 35/15 AL UNPERF 2000MM - 1201756

<https://www.phoenixcontact.com/us/products/1201756>



DIN rail, unperforated, similar to EN 60715, material: Aluminum, uncoated, Standard profile, color: silver

Protective conductor terminal - XTV 16-PE

1329674

<https://www.phoenixcontact.com/us/products/1329674>

DIN rail perforated

DIN rail perforated - NS 35/15 ZN PERF 2000MM - 1206599

<https://www.phoenixcontact.com/us/products/1206599>



DIN rail perforated, similar to EN 60715, material: Steel, galvanized, Standard profile, color: silver, Pack of 25 (50 m)

DIN rail, unperforated

DIN rail, unperforated - NS 35/15 ZN UNPERF 2000MM - 1206586

<https://www.phoenixcontact.com/us/products/1206586>



DIN rail, unperforated, similar to EN 60715, material: Steel, galvanized, Standard profile, color: silver, Pack of 25 (50 m)

Protective conductor terminal - XTV 16-PE

1329674

<https://www.phoenixcontact.com/us/products/1329674>

DIN rail, unperforated

DIN rail, unperforated - NS 35/15 CU UNPERF 2000MM-VPE 10 - 1201895

<https://www.phoenixcontact.com/us/products/1201895>



DIN rail, unperforated, similar to EN 60715, material: Copper, uncoated, Standard profile, color: copper-colored, Pack of 10 (20 m)

End cap

End cap - NS 35/15 CAP - 1206573

<https://www.phoenixcontact.com/us/products/1206573>

DIN rail end piece, for DIN rail NS 35/15



Protective conductor terminal - XTV 16-PE

1329674

<https://www.phoenixcontact.com/us/products/1329674>

DIN rail, unperforated

DIN rail, unperforated - NS 35/15-2,3 UNPERF 2000MM-VPE 10 - 1201798

<https://www.phoenixcontact.com/us/products/1201798>



DIN rail, unperforated, acc. to EN 60715, material: Steel, galvanized, passivated with a thick layer, Standard profile 2.3 mm, color: silver, Pack of 10 (20 m)

Zack Marker strip, flat

Zack Marker strip, flat - ZBF 12:UNBEDRUCKT - 0809735

<https://www.phoenixcontact.com/us/products/0809735>



Zack Marker strip, flat, Strip, white, unlabeled, can be labeled with: PLOTMARK, CMS-P1-PLOTTER, mounting type: snapped, for terminal block width: 12 mm, lettering field size: 5.15 x 12.15 mm, Number of individual labels: 5

Protective conductor terminal - XTV 16-PE

1329674

<https://www.phoenixcontact.com/us/products/1329674>

Zack Marker strip, flat

Zack Marker strip, flat - ZBF 12 CUS - 0825018

<https://www.phoenixcontact.com/us/products/0825018>



Zack Marker strip, flat, can be ordered: Strip, white, labeled according to customer specifications, mounting type: snap into flat marker groove, for terminal block width: 12 mm, lettering field size: 5.15 x 12.15 mm, Number of individual labels: 5

Marker for terminal blocks

Marker for terminal blocks - UC-TMF 12 - 0819233

<https://www.phoenixcontact.com/us/products/0819233>



Marker for terminal blocks, Sheet, white, unlabeled, can be labeled with: BLUEMARK ID COLOR, BLUEMARK ID, BLUEMARK CLED, PLOTMARK, CMS-P1-PLOTTER, mounting type: snapped, for terminal block width: 12 mm, lettering field size: 11.45 x 5.1 mm, Number of individual labels: 40

Protective conductor terminal - XTV 16-PE



1329674

<https://www.phoenixcontact.com/us/products/1329674>

Marker for terminal blocks

Marker for terminal blocks - UC-TMF 12 CUS - 0824670

<https://www.phoenixcontact.com/us/products/0824670>



Marker for terminal blocks, can be ordered: by sheet, white, labeled according to customer specifications, mounting type: snap into flat marker groove, for terminal block width: 12 mm, lettering field size: 11.45 x 5.1 mm, Number of individual labels: 40

Marker for terminal blocks

Marker for terminal blocks - UCT-TMF 12 - 0829214

<https://www.phoenixcontact.com/us/products/0829214>



Marker for terminal blocks, Sheet, white, unlabeled, can be labeled with: TOPMARK NEO, TOPMARK LASER, BLUEMARK ID COLOR, BLUEMARK ID, BLUEMARK CLED, THERMOMARK PRIME, THERMOMARK CARD 2.0, THERMOMARK CARD, mounting type: snapped, for terminal block width: 12 mm, lettering field size: 11.2 x 4.7 mm, Number of individual labels: 30

Protective conductor terminal - XTV 16-PE

1329674

<https://www.phoenixcontact.com/us/products/1329674>

Marker for terminal blocks

Marker for terminal blocks - UCT-TMF 12 CUS - 0829686

<https://www.phoenixcontact.com/us/products/0829686>



Marker for terminal blocks, can be ordered: by sheet, white, labeled according to customer specifications, mounting type: snap into flat marker groove, for terminal block width: 12 mm, lettering field size: 11.2 x 4.7 mm, Number of individual labels: 30

Zack marker strip

Zack marker strip - ZB 12:UNPRINTED - 0812120

<https://www.phoenixcontact.com/us/products/0812120>



Zack marker strip, Strip, white, unlabeled, can be labeled with: PLOTMARK, CMS-P1-PLOTTER, mounting type: snapped, for terminal block width: 12.2 mm, lettering field size: 12 x 10.5 mm, Number of individual labels: 5

Protective conductor terminal - XTV 16-PE

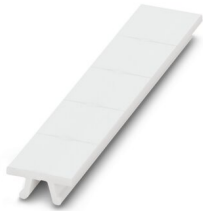
1329674

<https://www.phoenixcontact.com/us/products/1329674>

Zack marker strip

Zack marker strip - ZB 12 CUS - 0824942

<https://www.phoenixcontact.com/us/products/0824942>



Zack marker strip, can be ordered: Strip, white, labeled according to customer specifications, mounting type: snap into tall marker groove, for terminal block width: 12.2 mm, lettering field size: 10.5 x 12.15 mm, Number of individual labels: 5

Zack marker strip

Zack marker strip - ZB 12,LGS:L1-N,PE - 0812146

<https://www.phoenixcontact.com/us/products/0812146>



Zack marker strip, Strip, white, labeled, printed horizontally: L1, L2, L3, N, PE, mounting type: snapped, for terminal block width: 12.2 mm, lettering field size: 10.5 x 12.15 mm, Number of individual labels: 5

Protective conductor terminal - XTV 16-PE



1329674

<https://www.phoenixcontact.com/us/products/1329674>

Marker for terminal blocks

Marker for terminal blocks - UC-TM 12 - 0819194

<https://www.phoenixcontact.com/us/products/0819194>



Marker for terminal blocks, Sheet, white, unlabeled, can be labeled with: BLUEMARK ID COLOR, BLUEMARK ID, BLUEMARK CLED, PLOTMARK, CMS-P1-PLOTTER, mounting type: snapped, for terminal block width: 12 mm, lettering field size: 11.45 x 10.5 mm, Number of individual labels: 40

Marker for terminal blocks

Marker for terminal blocks - UC-TM 12 CUS - 0824613

<https://www.phoenixcontact.com/us/products/0824613>



Marker for terminal blocks, can be ordered: by sheet, white, labeled according to customer specifications, mounting type: snap into tall marker groove, for terminal block width: 12 mm, lettering field size: 11.45 x 10.5 mm, Number of individual labels: 40

Protective conductor terminal - XTV 16-PE



1329674

<https://www.phoenixcontact.com/us/products/1329674>

Marker for terminal blocks

Marker for terminal blocks - UCT-TM 12 - 0829144

<https://www.phoenixcontact.com/us/products/0829144>



Marker for terminal blocks, Sheet, white, unlabeled, can be labeled with: TOPMARK NEO, TOPMARK LASER, BLUEMARK ID COLOR, BLUEMARK ID, BLUEMARK CLED, THERMOMARK PRIME, THERMOMARK CARD 2.0, THERMOMARK CARD, mounting type: snapped, for terminal block width: 12 mm, lettering field size: 10.8 x 9.6 mm, Number of individual labels: 30

Marker for terminal blocks

Marker for terminal blocks - UCT-TM 12 CUS - 0829630

<https://www.phoenixcontact.com/us/products/0829630>



Marker for terminal blocks, can be ordered: by sheet, white, labeled according to customer specifications, mounting type: snap into tall marker groove, for terminal block width: 12 mm, lettering field size: 10.8 x 9.6 mm, Number of individual labels: 30

Protective conductor terminal - XTV 16-PE

1329674

<https://www.phoenixcontact.com/us/products/1329674>

Test plugs

Test plugs - MPS-MT - 0201744

<https://www.phoenixcontact.com/us/products/0201744>



Test plugs, with solder connection up to 1 mm² conductor cross section, color: gray

Insulating sleeve

Insulating sleeve - MPS-IH WH - 0201663

<https://www.phoenixcontact.com/us/products/0201663>



Insulating sleeve, color: white

Protective conductor terminal - XTV 16-PE

1329674

<https://www.phoenixcontact.com/us/products/1329674>

Insulating sleeve

Insulating sleeve - MPS-IH RD - 0201676

<https://www.phoenixcontact.com/us/products/0201676>

Insulating sleeve, color: red

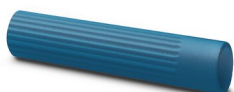


Insulating sleeve

Insulating sleeve - MPS-IH BU - 0201689

<https://www.phoenixcontact.com/us/products/0201689>

Insulating sleeve, color: blue



Protective conductor terminal - XTV 16-PE

1329674

<https://www.phoenixcontact.com/us/products/1329674>

Insulating sleeve

Insulating sleeve - MPS-IH YE - 0201692

<https://www.phoenixcontact.com/us/products/0201692>

Insulating sleeve, color: yellow



Insulating sleeve

Insulating sleeve - MPS-IH GN - 0201702

<https://www.phoenixcontact.com/us/products/0201702>

Insulating sleeve, color: green



Protective conductor terminal - XTV 16-PE

1329674

<https://www.phoenixcontact.com/us/products/1329674>

Insulating sleeve

Insulating sleeve - MPS-IH GY - 0201728

<https://www.phoenixcontact.com/us/products/0201728>

Insulating sleeve, color: gray



Insulating sleeve

Insulating sleeve - MPS-IH BK - 0201731

<https://www.phoenixcontact.com/us/products/0201731>

Insulating sleeve, color: black



Protective conductor terminal - XTV 16-PE



1329674

<https://www.phoenixcontact.com/us/products/1329674>

Software

Software - PROJECT COMPLETE - 1050453

<https://www.phoenixcontact.com/us/products/1050453>



Intuitive planning and marking software for configuring terminal strips and for professional marking of marking materials for terminal blocks, conductors, cables, devices, and systems. The software is available for download

End clamp

End clamp - E/UK - 1201442

<https://www.phoenixcontact.com/us/products/1201442>



End clamp, material: PA, color: gray, Mounting on a DIN rail NS 32 or NS 35

Protective conductor terminal - XTV 16-PE



1329674

<https://www.phoenixcontact.com/us/products/1329674>

End clamp

End clamp - E/UK 1 - 1201413

<https://www.phoenixcontact.com/us/products/1201413>



End clamps, for supporting the ends of double-level and three-level terminal blocks, width: 10 mm, color: gray

Marker for terminal blocks

Marker for terminal blocks - TMT (EX9,5)R - 0828295

<https://www.phoenixcontact.com/us/products/0828295>



Marker for terminal blocks, Roll, white, unlabeled, can be labeled with: THERMOMARK ROLL 2.0, THERMOMARK ROLL, THERMOMARK ROLL X1, THERMOMARK ROLLMASTER 300/600, THERMOMARK X1.2, mounting type: snapped, snap into tall marker groove, lettering field size: 9.5 x 50000 mm, Number of individual labels: 1

Protective conductor terminal - XTV 16-PE

1329674

<https://www.phoenixcontact.com/us/products/1329674>

Marker for terminal blocks

Marker for terminal blocks - US-TM 100 - 0829255

<https://www.phoenixcontact.com/us/products/0829255>



Marker for terminal blocks, Card, white, unlabeled, can be labeled with: BLUEMARK ID COLOR, BLUEMARK ID, THERMOMARK PRIME, THERMOMARK CARD 2.0, THERMOMARK CARD, mounting type: snapped, lettering field size: 104 x 9.8 mm, Number of individual labels: 13

End clamp

End clamp - CLIPFIX 35 - 3022218

<https://www.phoenixcontact.com/us/products/3022218>



Quick mounting end clamp for NS 35/7,5 DIN rail or NS 35/15 DIN rail, with marking option, width: 9.5 mm, color: gray

Protective conductor terminal - XTV 16-PE

1329674

<https://www.phoenixcontact.com/us/products/1329674>

End clamp

End clamp - CLIPFIX 35-5 - 3022276

<https://www.phoenixcontact.com/us/products/3022276>

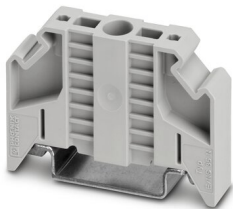


Quick mounting end clamp for NS 35/7,5 DIN rail or NS 35/15 DIN rail, with marking option, with parking option for FBS...5, FBS...6, KSS 5, KSS 6, width: 5.15 mm, color: gray

End clamp

End clamp - E/NS 35 N - 0800886

<https://www.phoenixcontact.com/us/products/0800886>



End clamp, width: 9.5 mm, color: gray

Protective conductor terminal - XTV 16-PE

1329674

<https://www.phoenixcontact.com/us/products/1329674>

Crimping pliers

Crimping pliers - CRIMPFOX CENTRUS 6S - 1213144

<https://www.phoenixcontact.com/us/products/1213144>



Crimping pliers, for uninsulated and insulated ferrules, DIN 46228 Part 1 and 4, from 0.14 mm² ... 6 mm², also for TWIN ferrules up to 2 x 4 mm², automatic cross section adjustment, lateral insertion, equipped with fall protection

Crimping pliers

Crimping pliers - CRIMPFOX CENTRUS 10S - 1213154

<https://www.phoenixcontact.com/us/products/1213154>



Crimping pliers, for uninsulated and insulated ferrules, DIN 46228 Part 1 and 4, from 0.14 mm² ... 10 mm², also for TWIN ferrules up to 2 x 4 mm², automatic cross section adjustment, lateral insertion, equipped with fall protection

Protective conductor terminal - XTV 16-PE

1329674

<https://www.phoenixcontact.com/us/products/1329674>

Crimping pliers

Crimping pliers - CRIMPFOX CENTRUS 6H - 1213146

<https://www.phoenixcontact.com/us/products/1213146>



Crimping pliers, for uninsulated and insulated ferrules, DIN 46228 Part 1 and 4, from 0.14 mm² ... 6 mm², also for TWIN ferrules up to 2 x 4 mm², automatic cross section adjustment, lateral insertion, equipped with fall protection

Crimping pliers

Crimping pliers - CRIMPFOX CENTRUS 10H - 1213156

<https://www.phoenixcontact.com/us/products/1213156>



Crimping pliers, for uninsulated and insulated ferrules, DIN 46228 Part 1 and 4, from 0.14 mm² ... 10 mm², also for TWIN ferrules up to 2 x 4 mm², automatic cross section adjustment, lateral insertion, equipped with fall protection

Protective conductor terminal - XTV 16-PE

1329674

<https://www.phoenixcontact.com/us/products/1329674>

Crimping pliers

Crimping pliers - CRIMPFOX 10S - 1212045

<https://www.phoenixcontact.com/us/products/1212045>



Crimping pliers, for ferrules without insulating collar according to DIN 46228 Part 1 and ferrules with insulating collar according to DIN 46228 Part 4, 0.14 mm² ... 10 mm², unlockable pressure lock, lateral entry

Crimping pliers

Crimping pliers - CRIMPFOX 6H - 1212046

<https://www.phoenixcontact.com/us/products/1212046>



Crimping pliers, for ferrules without insulating collar according to DIN 46228 Part 1 and ferrules with insulating collar according to DIN 46228 Part 4, 0.14 mm² ... 6 mm², unlockable pressure lock, lateral entry

Protective conductor terminal - XTV 16-PE

1329674

<https://www.phoenixcontact.com/us/products/1329674>

Crimping pliers

Crimping pliers - CRIMPFOX 2,5-M - 1212719

<https://www.phoenixcontact.com/us/products/1212719>



Crimping pliers, for ferrules without insulating collar according to DIN 46228 Part 1 and ferrules with insulating collar according to DIN 46228 Part 4, 0.25 mm² ... 2.5 mm², lateral entry, trapezoidal crimp

Crimping pliers

Crimping pliers - CRIMPFOX 6-M - 1212720

<https://www.phoenixcontact.com/us/products/1212720>



Crimping pliers, for ferrules without insulating collar according to DIN 46228 Part 1 and ferrules with insulating collar according to DIN 46228 Part 4, 0.25 mm² ... 6.0 mm², lateral entry, trapezoidal crimp

Protective conductor terminal - XTV 16-PE

1329674

<https://www.phoenixcontact.com/us/products/1329674>

Crimping pliers

Crimping pliers - CRIMPFOX 6 - 1212034

<https://www.phoenixcontact.com/us/products/1212034>



Crimping pliers, for ferrules without insulating collar according to DIN 46228 Part 1 and ferrules with insulating collar according to DIN 46228 Part 4, 0.25 mm² ... 6.0 mm², lateral entry, trapezoidal crimp

Crimping pliers

Crimping pliers - CRIMPFOX 6T - 1212037

<https://www.phoenixcontact.com/us/products/1212037>



Crimping pliers, for ferrules without insulating collar according to DIN 46228 Part 1 and ferrules with insulating collar according to DIN 46228 Part 4, 0.25 mm² ... 6 mm², lateral entry, trapezoidal crimp

Protective conductor terminal - XTV 16-PE

1329674

<https://www.phoenixcontact.com/us/products/1329674>

Crimping pliers

Crimping pliers - CRIMPFOX 6T-F - 1212038

<https://www.phoenixcontact.com/us/products/1212038>



Crimping pliers, for ferrules without insulating collar according to DIN 46228 Part 1 and ferrules with insulating collar according to DIN 46228 Part 4, 0.25 mm² ... 6 mm², front entry, trapezoidal crimp

Crimping pliers

Crimping pliers - CRIMPFOX 6S-F - 1212043

<https://www.phoenixcontact.com/us/products/1212043>



Crimping pliers, for ferrules without insulating collar according to DIN 46228 Part 1 and ferrules with insulating collar according to DIN 46228 Part 4, 0.5 mm² ... 6 mm², front entry, square crimp

Protective conductor terminal - XTV 16-PE

1329674

<https://www.phoenixcontact.com/us/products/1329674>

Crimping pliers

Crimping pliers - CRIMPFOX 10 - 1212721

<https://www.phoenixcontact.com/us/products/1212721>



Crimping pliers, for ferrules without insulating collar according to DIN 46228 Part 1 and ferrules with insulating collar according to DIN 46228 Part 4, 4 mm² ... 10 mm², lateral entry, trapezoidal crimp

Crimping pliers

Crimping pliers - CRIMPFOX 25R - 1212039

<https://www.phoenixcontact.com/us/products/1212039>



Crimping pliers, for ferrules without insulating collar according to DIN 46228 Part 1 and ferrules with insulating collar according to DIN 46228 Part 4, 10 mm² ... 25 mm², lateral entry, WM crimp

Protective conductor terminal - XTV 16-PE



1329674

<https://www.phoenixcontact.com/us/products/1329674>

Crimping pliers

Crimping pliers - CRIMPFOX-M - 1212072

<https://www.phoenixcontact.com/us/products/1212072>



Basic pliers, for accommodating dies for a wide range of type of contacts

Phoenix Contact 2022 © - all rights reserved

<https://www.phoenixcontact.com>

Phoenix Contact USA
586 Fulling Mill Road
Middletown, PA 17057, United States
(+717) 944-1300
info@phoenixcon.com

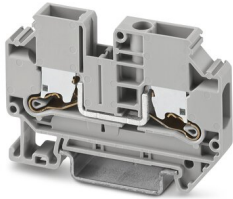
Feed-through terminal block - XTV 6



1329493

<https://www.phoenixcontact.com/us/products/1329493>

Please be informed that the data shown in this PDF document is generated from our Online Catalog. Please find the complete data in the user documentation. Our General Terms of Use for Downloads are valid.



Feed-through terminal block, nom. voltage: 1000 V, nominal current: 41 A, connection method: Push-X-connection, Rated cross section: 6 mm², cross section: 1.5 mm² - 10 mm², mounting type: NS 35/7,5, NS 35/15, color: gray

Your advantages

- Fast, powerless conductor connection for all conductor types with the pretensioned contact spring
- A high level of flexibility when inserting conductors enables conductors with or without ferrules to be connected easily
- Clear conductor connection with the lateral connection direction and the clear pusher position
- Easy procurement of information – the QR code on the terminal block provides all important information about the product
- Terminal blocks with Push-X connection are part of the COMPLETE line system

Commercial Data

Item number	1329493
Packing unit	1 pc
Minimum order quantity	50 pc
Sales Key	B02
Product Key	BE2511
GTIN	4063151622497
Weight per Piece (including packing)	17.2 g
Weight per Piece (excluding packing)	17.2 g
Customs tariff number	85369010
Country of origin	CN

Feed-through terminal block - XTV 6



1329493

<https://www.phoenixcontact.com/us/products/1329493>

Technical Data

Notes

General

Note	The max. load current must not be exceeded by the total current of all connected conductors.
------	--

Product properties

Product type	Feed-through terminal block
Number of positions	1
Area of application	Railway industry
	Machine building
	Plant engineering
Number of connections	2
Number of rows	1

Insulation characteristics

Overvoltage category	III
Degree of pollution	3

Electrical properties

Rated surge voltage	8 kV
Maximum power dissipation for nominal condition	1.31 W

Connection data

Number of connections per level	2
Nominal cross section	6 mm ²
Stripping length	10 mm ... 12 mm
Internal cylindrical gage	A5
	B4
Conductor cross section solid	1.5 mm ² ... 10 mm ²
Cross section AWG	16 ... 8
Conductor cross section flexible	1.5 mm ² ... 6 mm ²
Conductor cross section, flexible [AWG]	16 ... 10
Flexible conductor cross section flexible (ferrule, w/o plastic sleeve)	1.5 mm ² ... 6 mm ²
Flexible conductor cross section (ferrule with plastic sleeve)	1.5 mm ² ... 6 mm ²
2 conductors with the same cross section, flexible, with TWIN ferrule with plastic sleeve	1.5 mm ² ... 4 mm ²
Nominal current	41 A
Maximum load current	52 A (with 10 mm ² conductor cross section)
Nominal voltage	1000 V
Nominal cross section	6 mm ²

Dimensions

Feed-through terminal block - XTV 6



1329493

<https://www.phoenixcontact.com/us/products/1329493>

Width	8.2 mm
End cover width	2.2 mm
Height	42.2 mm
Height NS 35/15	51.2 mm
Height NS 35/7,5	43.7 mm
Length	62.8 mm

Material specifications

Color	gray
Flammability rating according to UL 94	V0
Insulating material group	I
Insulating material	PA
Static insulating material application in cold	-60 °C
Relative insulation material temperature index (Elec., UL 746 B)	130 °C
Fire protection for rail vehicles (DIN EN 45545-2) R22	HL 1 - HL 3
Fire protection for rail vehicles (DIN EN 45545-2) R23	HL 1 - HL 3
Fire protection for rail vehicles (DIN EN 45545-2) R24	HL 1 - HL 3
Fire protection for rail vehicles (DIN EN 45545-2) R26	HL 1 - HL 3
Surface flammability NFPA 130 (ASTM E 162)	passed
Specific optical density of smoke NFPA 130 (ASTM E 662)	passed
Smoke gas toxicity NFPA 130 (SMP 800C)	passed

Mechanical properties

Mechanical data

Open side panel	Yes
-----------------	-----

Environmental and real-life conditions

Needle-flame test

Time of exposure	30 s
------------------	------

Oscillation/broadband noise

Specification	DIN EN 50155 (VDE 0115-200):2018-05
Spectrum	Service life test category 2, bogie-mounted
Frequency	$f_1 = 5 \text{ Hz}$ to $f_2 = 250 \text{ Hz}$
ASD level	6.12 (m/s ²)/Hz
Acceleration	3.12g
Test duration per axis	5 h
Test directions	X-, Y- and Z-axis

Shocks

Specification	DIN EN 50155 (VDE 0115-200):2018-05
Pulse shape	Half-sine
Acceleration	30g
Shock duration	18 ms

Feed-through terminal block - XTV 6



1329493

<https://www.phoenixcontact.com/us/products/1329493>

Number of shocks per direction	3
Test directions	X-, Y- and Z-axis (pos. and neg.)

Ambient conditions

Ambient temperature (operation)	-60 °C ... 105 °C (max. short-term operating temperature RTI Elec.)
Ambient temperature (storage/transport)	-25 °C ... 60 °C (for a short time, not exceeding 24 h, -60 °C to +70 °C)
Ambient temperature (assembly)	-5 °C ... 70 °C
Ambient temperature (actuation)	-5 °C ... 70 °C
Permissible humidity (storage/transport)	30 % ... 70 %

Standards and regulations

Connection in acc. with standard	IEC 60947-7-1
----------------------------------	---------------

Mounting

Mounting type	NS 35/7,5
	NS 35/15

Phoenix Contact 2022 © - all rights reserved
<https://www.phoenixcontact.com>

Phoenix Contact USA
586 Fulling Mill Road
Middletown, PA 17057, United States
(+717) 944-1300
info@phoenixcon.com

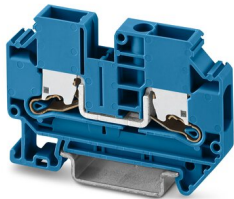
Feed-through terminal block - XTV 6 BU



1329494

<https://www.phoenixcontact.com/us/products/1329494>

Please be informed that the data shown in this PDF document is generated from our Online Catalog. Please find the complete data in the user documentation. Our General Terms of Use for Downloads are valid.



Feed-through terminal block, nom. voltage: 1000 V, nominal current: 41 A, connection method: Push-X-connection, Rated cross section: 6 mm², cross section: 1.5 mm² - 10 mm², mounting type: NS 35/7,5, NS 35/15, color: blue

Your advantages

- Fast, powerless conductor connection for all conductor types with the pretensioned contact spring
- A high level of flexibility when inserting conductors enables conductors with or without ferrules to be connected easily
- Clear conductor connection with the lateral connection direction and the clear pusher position
- Easy procurement of information – the QR code on the terminal block provides all important information about the product
- Terminal blocks with Push-X connection are part of the COMPLETE line system

Commercial Data

Item number	1329494
Packing unit	1 pc
Minimum order quantity	50 pc
Sales Key	B02
Product Key	BE2511
GTIN	4063151623791
Weight per Piece (including packing)	17.2 g
Weight per Piece (excluding packing)	17.2 g
Customs tariff number	85369010
Country of origin	CN

Feed-through terminal block - XTV 6 BU



1329494

<https://www.phoenixcontact.com/us/products/1329494>

Technical Data

Product properties

Product type	Feed-through terminal block
Number of positions	1
Area of application	Railway industry
	Machine building
	Plant engineering
Number of connections	2
Number of rows	1

Insulation characteristics

Overvoltage category	III
Degree of pollution	3

Electrical properties

Rated surge voltage	8 kV
Maximum power dissipation for nominal condition	1.31 W

Connection data

Number of connections per level	2
Nominal cross section	6 mm ²
Stripping length	10 mm ... 12 mm
Internal cylindrical gage	A5
	B4
Conductor cross section solid	1.5 mm ² ... 10 mm ²
Cross section AWG	16 ... 8
Conductor cross section flexible	1.5 mm ² ... 6 mm ²
Conductor cross section, flexible [AWG]	16 ... 10
Flexible conductor cross section flexible (ferrule, w/o plastic sleeve)	1.5 mm ² ... 6 mm ²
Flexible conductor cross section (ferrule with plastic sleeve)	1.5 mm ² ... 6 mm ²
2 conductors with the same cross section, flexible, with TWIN ferrule with plastic sleeve	1.5 mm ² ... 4 mm ²
Nominal current	41 A
Maximum load current	52 A (with 10 mm ² conductor cross section)
Nominal voltage	1000 V
Nominal cross section	6 mm ²

Dimensions

Width	8.2 mm
End cover width	2.2 mm
Height	42.2 mm
Height NS 35/15	51.2 mm
Height NS 35/7,5	43.7 mm

Feed-through terminal block - XTV 6 BU



1329494

<https://www.phoenixcontact.com/us/products/1329494>

Length	62.8 mm
--------	---------

Material specifications

Color	blue
Flammability rating according to UL 94	V0
Insulating material group	I
Insulating material	PA
Static insulating material application in cold	-60 °C
Relative insulation material temperature index (Elec., UL 746 B)	130 °C
Fire protection for rail vehicles (DIN EN 45545-2) R22	HL 1 - HL 3
Fire protection for rail vehicles (DIN EN 45545-2) R23	HL 1 - HL 3
Fire protection for rail vehicles (DIN EN 45545-2) R24	HL 1 - HL 3
Fire protection for rail vehicles (DIN EN 45545-2) R26	HL 1 - HL 3
Surface flammability NFPA 130 (ASTM E 162)	passed
Specific optical density of smoke NFPA 130 (ASTM E 662)	passed
Smoke gas toxicity NFPA 130 (SMP 800C)	passed

Mechanical properties

Mechanical data

Open side panel	Yes
-----------------	-----

Environmental and real-life conditions

Ambient conditions

Ambient temperature (operation)	-60 °C ... 105 °C (max. short-term operating temperature RTI Elec.)
Ambient temperature (storage/transport)	-25 °C ... 60 °C (for a short time, not exceeding 24 h, -60 °C to +70 °C)
Ambient temperature (assembly)	-5 °C ... 70 °C
Ambient temperature (actuation)	-5 °C ... 70 °C
Permissible humidity (storage/transport)	30 % ... 70 %

Standards and regulations

Connection in acc. with standard	IEC 60947-7-1
----------------------------------	---------------

Mounting

Mounting type	NS 35/7,5
	NS 35/15

Feed-through terminal block - XTV 6 BU



1329494

<https://www.phoenixcontact.com/us/products/1329494>

Phoenix Contact 2022 © - all rights reserved

<https://www.phoenixcontact.com>

Phoenix Contact USA
586 Fulling Mill Road
Middletown, PA 17057, United States
(+717) 944-1300
info@phoenixcon.com

Protective conductor terminal - XTV 6-PE



1329495

<https://www.phoenixcontact.com/us/products/1329495>

Please be informed that the data shown in this PDF document is generated from our Online Catalog. Please find the complete data in the user documentation. Our General Terms of Use for Downloads are valid.



Protective conductor terminal, number of connections: 2, number of positions: 1, connection method: Push-X-connection, cross section: 1.5 mm² - 10 mm², mounting type: NS 35/7,5, NS 35/15, color: green/yellow

Your advantages

- Fast, powerless conductor connection for all conductor types with the pretensioned contact spring
- A high level of flexibility when inserting conductors enables conductors with or without ferrules to be connected easily
- Clear conductor connection with the lateral connection direction and the clear pusher position
- Easy procurement of information – the QR code on the terminal block provides all important information about the product
- Terminal blocks with Push-X connection are part of the COMPLETE line system

Commercial Data

Item number	1329495
Packing unit	1 pc
Minimum order quantity	50 pc
Sales Key	B02
Product Key	BE2521
GTIN	4063151623067
Weight per Piece (including packing)	21.189 g
Weight per Piece (excluding packing)	18 g
Customs tariff number	85369010
Country of origin	CN

Protective conductor terminal - XTV 6-PE



1329495

<https://www.phoenixcontact.com/us/products/1329495>

Technical Data

Notes

General

Note	When establishing a connection on the open housing side of a feed-through modular terminal block of the same series and size, the block must be provided with a cover if the expected insulation voltage is >320 V.
------	---

Product properties

Product type	Ground terminal block
Number of positions	1
Area of application	Railway industry
	Machine building
	Plant engineering
Number of connections	2
Number of rows	1

Insulation characteristics

Overvoltage category	III
Degree of pollution	3

Electrical properties

Rated surge voltage	8 kV
Maximum power dissipation for nominal condition	0 W

Connection data

Number of connections per level	2
Nominal cross section	6 mm ²
Stripping length	10 mm ... 12 mm
Internal cylindrical gage	A5
	B4
Conductor cross section solid	1.5 mm ² ... 10 mm ²
Cross section AWG	16 ... 8
Conductor cross section flexible	1.5 mm ² ... 6 mm ²
Conductor cross section, flexible [AWG]	16 ... 10
Flexible conductor cross section flexible (ferrule, w/o plastic sleeve)	1.5 mm ² ... 6 mm ²
Flexible conductor cross section (ferrule with plastic sleeve)	1.5 mm ² ... 6 mm ²

Dimensions

Width	8.2 mm
End cover width	2.2 mm
Height	42.2 mm
Height NS 35/15	51.2 mm

Protective conductor terminal - XTV 6-PE



1329495

<https://www.phoenixcontact.com/us/products/1329495>

Height NS 35/7,5	43.7 mm
Length	62.8 mm

Material specifications

Color	green/yellow
Flammability rating according to UL 94	V0
Insulating material group	I
Insulating material	PA
Static insulating material application in cold	-60 °C
Relative insulation material temperature index (Elec., UL 746 B)	130 °C
Fire protection for rail vehicles (DIN EN 45545-2) R22	HL 1 - HL 3
Fire protection for rail vehicles (DIN EN 45545-2) R23	HL 1 - HL 3
Fire protection for rail vehicles (DIN EN 45545-2) R24	HL 1 - HL 3
Fire protection for rail vehicles (DIN EN 45545-2) R26	HL 1 - HL 3
Surface flammability NFPA 130 (ASTM E 162)	passed
Specific optical density of smoke NFPA 130 (ASTM E 662)	passed
Smoke gas toxicity NFPA 130 (SMP 800C)	passed

Mechanical properties

Mechanical data

Open side panel	Yes
-----------------	-----

Environmental and real-life conditions

Oscillation/broadband noise

Specification	DIN EN 50155 (VDE 0115-200):2018-05
Spectrum	Service life test category 2, bogie-mounted
Frequency	$f_1 = 5 \text{ Hz}$ to $f_2 = 250 \text{ Hz}$
ASD level	$6.12 \text{ (m/s}^2\text{)}^2\text{/Hz}$
Acceleration	3.12g
Test duration per axis	5 h
Test directions	X-, Y- and Z-axis

Shocks

Specification	DIN EN 50155 (VDE 0115-200):2018-05
Pulse shape	Half-sine
Acceleration	30g
Shock duration	18 ms
Number of shocks per direction	3
Test directions	X-, Y- and Z-axis (pos. and neg.)

Ambient conditions

Ambient temperature (operation)	-60 °C ... 105 °C (max. short-term operating temperature RTI Elec.)
Ambient temperature (storage/transport)	-25 °C ... 60 °C (for a short time, not exceeding 24 h, -60 °C to +70 °C)

Protective conductor terminal - XTV 6-PE



1329495

<https://www.phoenixcontact.com/us/products/1329495>

Ambient temperature (assembly)	-5 °C ... 70 °C
Ambient temperature (actuation)	-5 °C ... 70 °C
Permissible humidity (storage/transport)	30 % ... 70 %

Standards and regulations

Connection in acc. with standard	IEC 60947-7-2
----------------------------------	---------------

Mounting

Mounting type	NS 35/7,5
	NS 35/15

Phoenix Contact 2022 © - all rights reserved

<https://www.phoenixcontact.com>

Phoenix Contact USA
586 Fulling Mill Road
Middletown, PA 17057, United States
(+717) 944-1300
info@phoenixcon.com

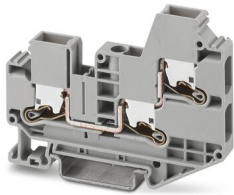
Feed-through terminal block - XTV 6-TWIN



1329499

<https://www.phoenixcontact.com/us/products/1329499>

Please be informed that the data shown in this PDF document is generated from our Online Catalog. Please find the complete data in the user documentation. Our General Terms of Use for Downloads are valid.



Feed-through terminal block, nom. voltage: 1000 V, nominal current: 41 A, connection method: Push-X-connection, Rated cross section: 6 mm², cross section: 1.5 mm² - 10 mm², mounting type: NS 35/7,5, NS 35/15, color: gray

Your advantages

- Fast, powerless conductor connection for all conductor types with the pretensioned contact spring
- A high level of flexibility when inserting conductors enables conductors with or without ferrules to be connected easily
- Clear conductor connection with the lateral connection direction and the clear pusher position
- Easy procurement of information – the QR code on the terminal block provides all important information about the product
- Terminal blocks with Push-X connection are part of the COMPLETE line system

Commercial Data

Item number	1329499
Packing unit	1 pc
Minimum order quantity	50 pc
Sales Key	B02
Product Key	BE2512
GTIN	4063151624088
Weight per Piece (including packing)	25 g
Weight per Piece (excluding packing)	25 g
Customs tariff number	85369010
Country of origin	CN

Feed-through terminal block - XTV 6-TWIN



1329499

<https://www.phoenixcontact.com/us/products/1329499>

Technical Data

Notes

General

Note	The max. load current must not be exceeded by the total current of all connected conductors.
------	--

Product properties

Product type	Feed-through terminal block
Number of positions	1
Area of application	Railway industry
	Machine building
	Plant engineering
Number of connections	3
Number of rows	1

Insulation characteristics

Overvoltage category	III
Degree of pollution	3

Electrical properties

Rated surge voltage	8 kV
Maximum power dissipation for nominal condition	1.31 W

Connection data

Number of connections per level	3
Nominal cross section	6 mm ²
Stripping length	10 mm ... 12 mm
Internal cylindrical gage	A5
	B4
Conductor cross section solid	1.5 mm ² ... 10 mm ²
Cross section AWG	16 ... 8
Conductor cross section flexible	1.5 mm ² ... 6 mm ²
Conductor cross section, flexible [AWG]	16 ... 10
Flexible conductor cross section flexible (ferrule, w/o plastic sleeve)	1.5 mm ² ... 6 mm ²
Flexible conductor cross section (ferrule with plastic sleeve)	1.5 mm ² ... 6 mm ²
2 conductors with the same cross section, flexible, with TWIN ferrule with plastic sleeve	1.5 mm ² ... 4 mm ²
Nominal current	41 A
Maximum load current	52 A (with 10 mm ² conductor cross section)
Nominal voltage	1000 V
Nominal cross section	6 mm ²

Dimensions

Feed-through terminal block - XTV 6-TWIN



1329499

<https://www.phoenixcontact.com/us/products/1329499>

Width	8.2 mm
End cover width	2.2 mm
Height	57.6 mm
Height NS 35/15	66.6 mm
Height NS 35/7,5	59.1 mm
Length	76.7 mm

Material specifications

Color	gray
Flammability rating according to UL 94	V0
Insulating material group	I
Insulating material	PA
Static insulating material application in cold	-60 °C
Relative insulation material temperature index (Elec., UL 746 B)	130 °C
Fire protection for rail vehicles (DIN EN 45545-2) R22	HL 1 - HL 3
Fire protection for rail vehicles (DIN EN 45545-2) R23	HL 1 - HL 3
Fire protection for rail vehicles (DIN EN 45545-2) R24	HL 1 - HL 3
Fire protection for rail vehicles (DIN EN 45545-2) R26	HL 1 - HL 3
Surface flammability NFPA 130 (ASTM E 162)	passed
Specific optical density of smoke NFPA 130 (ASTM E 662)	passed
Smoke gas toxicity NFPA 130 (SMP 800C)	passed

Mechanical properties

Mechanical data

Open side panel	Yes
-----------------	-----

Environmental and real-life conditions

Needle-flame test

Time of exposure	30 s
------------------	------

Oscillation/broadband noise

Specification	DIN EN 50155 (VDE 0115-200):2018-05
Spectrum	Service life test category 2, bogie-mounted
Frequency	$f_1 = 5 \text{ Hz}$ to $f_2 = 250 \text{ Hz}$
ASD level	6.12 (m/s ²)/Hz
Acceleration	3.12g
Test duration per axis	5 h
Test directions	X-, Y- and Z-axis

Shocks

Specification	DIN EN 50155 (VDE 0115-200):2018-05
Pulse shape	Half-sine
Acceleration	30g
Shock duration	18 ms

Feed-through terminal block - XTV 6-TWIN



1329499

<https://www.phoenixcontact.com/us/products/1329499>

Number of shocks per direction	3
Test directions	X-, Y- and Z-axis (pos. and neg.)

Ambient conditions

Ambient temperature (operation)	-60 °C ... 105 °C (max. short-term operating temperature RTI Elec.)
Ambient temperature (storage/transport)	-25 °C ... 60 °C (for a short time, not exceeding 24 h, -60 °C to +70 °C)
Ambient temperature (assembly)	-5 °C ... 70 °C
Ambient temperature (actuation)	-5 °C ... 70 °C
Permissible humidity (storage/transport)	30 % ... 70 %

Standards and regulations

Connection in acc. with standard	IEC 60947-7-1
----------------------------------	---------------

Mounting

Mounting type	NS 35/7,5
	NS 35/15

Phoenix Contact 2022 © - all rights reserved
<https://www.phoenixcontact.com>

Phoenix Contact USA
586 Fulling Mill Road
Middletown, PA 17057, United States
(+717) 944-1300
info@phoenixcon.com

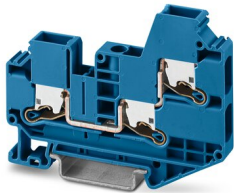
Feed-through terminal block - XTV 6-TWIN BU



1329506

<https://www.phoenixcontact.com/us/products/1329506>

Please be informed that the data shown in this PDF document is generated from our Online Catalog. Please find the complete data in the user documentation. Our General Terms of Use for Downloads are valid.



Feed-through terminal block, nom. voltage: 1000 V, nominal current: 41 A, connection method: Push-X-connection, Rated cross section: 6 mm², cross section: 1.5 mm² - 10 mm², mounting type: NS 35/7,5, NS 35/15, color: blue

Your advantages

- Fast, powerless conductor connection for all conductor types with the pretensioned contact spring
- A high level of flexibility when inserting conductors enables conductors with or without ferrules to be connected easily
- Clear conductor connection with the lateral connection direction and the clear pusher position
- Easy procurement of information – the QR code on the terminal block provides all important information about the product
- Terminal blocks with Push-X connection are part of the COMPLETE line system

Commercial Data

Item number	1329506
Packing unit	1 pc
Minimum order quantity	50 pc
Sales Key	B02
Product Key	BE2512
GTIN	4063151621490
Weight per Piece (including packing)	25 g
Weight per Piece (excluding packing)	25 g
Customs tariff number	85369010
Country of origin	CN

Feed-through terminal block - XTV 6-TWIN BU



1329506

<https://www.phoenixcontact.com/us/products/1329506>

Technical Data

Product properties

Product type	Feed-through terminal block
Number of positions	1
Area of application	Railway industry
	Machine building
	Plant engineering
Number of connections	3
Number of rows	1

Insulation characteristics

Overvoltage category	III
Degree of pollution	3

Electrical properties

Rated surge voltage	8 kV
Maximum power dissipation for nominal condition	1.31 W

Connection data

Number of connections per level	3
Nominal cross section	6 mm ²
Stripping length	10 mm ... 12 mm
Internal cylindrical gage	A5
	B4
Conductor cross section solid	1.5 mm ² ... 10 mm ²
Cross section AWG	16 ... 8
Conductor cross section flexible	1.5 mm ² ... 6 mm ²
Conductor cross section, flexible [AWG]	16 ... 10
Flexible conductor cross section flexible (ferrule, w/o plastic sleeve)	1.5 mm ² ... 6 mm ²
Flexible conductor cross section (ferrule with plastic sleeve)	1.5 mm ² ... 6 mm ²
2 conductors with the same cross section, flexible, with TWIN ferrule with plastic sleeve	1.5 mm ² ... 4 mm ²
Nominal current	41 A
Maximum load current	52 A (with 10 mm ² conductor cross section)
Nominal voltage	1000 V
Nominal cross section	6 mm ²

Dimensions

Width	8.2 mm
End cover width	2.2 mm
Height	57.6 mm
Height NS 35/15	66.6 mm
Height NS 35/7,5	59.1 mm

Feed-through terminal block - XTV 6-TWIN BU



1329506

<https://www.phoenixcontact.com/us/products/1329506>

Length	76.7 mm
--------	---------

Material specifications

Color	blue
Flammability rating according to UL 94	V0
Insulating material group	I
Insulating material	PA
Static insulating material application in cold	-60 °C
Relative insulation material temperature index (Elec., UL 746 B)	130 °C
Fire protection for rail vehicles (DIN EN 45545-2) R22	HL 1 - HL 3
Fire protection for rail vehicles (DIN EN 45545-2) R23	HL 1 - HL 3
Fire protection for rail vehicles (DIN EN 45545-2) R24	HL 1 - HL 3
Fire protection for rail vehicles (DIN EN 45545-2) R26	HL 1 - HL 3
Surface flammability NFPA 130 (ASTM E 162)	passed
Specific optical density of smoke NFPA 130 (ASTM E 662)	passed
Smoke gas toxicity NFPA 130 (SMP 800C)	passed

Mechanical properties

Mechanical data

Open side panel	Yes
-----------------	-----

Environmental and real-life conditions

Ambient conditions

Ambient temperature (operation)	-60 °C ... 105 °C (max. short-term operating temperature RTI Elec.)
Ambient temperature (storage/transport)	-25 °C ... 60 °C (for a short time, not exceeding 24 h, -60 °C to +70 °C)
Ambient temperature (assembly)	-5 °C ... 70 °C
Ambient temperature (actuation)	-5 °C ... 70 °C
Permissible humidity (storage/transport)	30 % ... 70 %

Standards and regulations

Connection in acc. with standard	IEC 60947-7-1
----------------------------------	---------------

Mounting

Mounting type	NS 35/7,5
	NS 35/15

Feed-through terminal block - XTV 6-TWIN BU

1329506

<https://www.phoenixcontact.com/us/products/1329506>



Phoenix Contact 2022 © - all rights reserved

<https://www.phoenixcontact.com>

Phoenix Contact USA
586 Fulling Mill Road
Middletown, PA 17057, United States
(+717) 944-1300
info@phoenixcon.com

Protective conductor terminal - XTV 6-TWIN-PE



1329507

<https://www.phoenixcontact.com/us/products/1329507>

Please be informed that the data shown in this PDF document is generated from our Online Catalog. Please find the complete data in the user documentation. Our General Terms of Use for Downloads are valid.



Protective conductor terminal, number of connections: 3, number of positions: 1, connection method: Push-X-connection, cross section: 1.5 mm² - 10 mm², mounting type: NS 35/7,5, NS 35/15, color: green/yellow

Your advantages

- Fast, powerless conductor connection for all conductor types with the pretensioned contact spring
- A high level of flexibility when inserting conductors enables conductors with or without ferrules to be connected easily
- Clear conductor connection with the lateral connection direction and the clear pusher position
- Easy procurement of information – the QR code on the terminal block provides all important information about the product
- Terminal blocks with Push-X connection are part of the COMPLETE line system

Commercial Data

Item number	1329507
Packing unit	1 pc
Minimum order quantity	50 pc
Sales Key	B02
Product Key	BE2522
GTIN	4063151622541
Weight per Piece (including packing)	28.614 g
Weight per Piece (excluding packing)	26 g
Customs tariff number	85369010
Country of origin	CN

Protective conductor terminal - XTV 6-TWIN-PE



1329507

<https://www.phoenixcontact.com/us/products/1329507>

Technical Data

Notes

General

Note	When establishing a connection on the open housing side of a feed-through modular terminal block of the same series and size, the block must be provided with a cover if the expected insulation voltage is >320 V.
	The max. load current must not be exceeded by the total current of all connected conductors.

Product properties

Product type	Ground terminal block
Number of positions	1
Area of application	Railway industry
	Machine building
	Plant engineering
Number of connections	3
Number of rows	1

Insulation characteristics

Overvoltage category	III
Degree of pollution	3

Electrical properties

Rated surge voltage	8 kV
Maximum power dissipation for nominal condition	0 W

Connection data

Number of connections per level	3
Nominal cross section	6 mm ²
Stripping length	10 mm ... 12 mm
Internal cylindrical gage	A5
	B4
Conductor cross section solid	1.5 mm ² ... 10 mm ²
Cross section AWG	16 ... 8
Conductor cross section flexible	1.5 mm ² ... 6 mm ²
Conductor cross section, flexible [AWG]	16 ... 10
Flexible conductor cross section flexible (ferrule, w/o plastic sleeve)	1.5 mm ² ... 6 mm ²
Flexible conductor cross section (ferrule with plastic sleeve)	1.5 mm ² ... 6 mm ²

Dimensions

Width	8.2 mm
End cover width	2.2 mm

Protective conductor terminal - XTV 6-TWIN-PE



1329507

<https://www.phoenixcontact.com/us/products/1329507>

Height	57.6 mm
Height NS 35/15	66.6 mm
Height NS 35/7,5	59.1 mm
Length	76.7 mm

Material specifications

Color	green/yellow
Flammability rating according to UL 94	V0
Insulating material group	I
Insulating material	PA
Static insulating material application in cold	-60 °C
Relative insulation material temperature index (Elec., UL 746 B)	130 °C
Fire protection for rail vehicles (DIN EN 45545-2) R22	HL 1 - HL 3
Fire protection for rail vehicles (DIN EN 45545-2) R23	HL 1 - HL 3
Fire protection for rail vehicles (DIN EN 45545-2) R24	HL 1 - HL 3
Fire protection for rail vehicles (DIN EN 45545-2) R26	HL 1 - HL 3
Surface flammability NFPA 130 (ASTM E 162)	passed
Specific optical density of smoke NFPA 130 (ASTM E 662)	passed
Smoke gas toxicity NFPA 130 (SMP 800C)	passed

Mechanical properties

Mechanical data

Open side panel	Yes
-----------------	-----

Environmental and real-life conditions

Oscillation/broadband noise

Specification	DIN EN 50155 (VDE 0115-200):2018-05
Spectrum	Service life test category 2, bogie-mounted
Frequency	$f_1 = 5 \text{ Hz}$ to $f_2 = 250 \text{ Hz}$
ASD level	$6.12 \text{ (m/s}^2\text{)}^2\text{/Hz}$
Acceleration	3.12g
Test duration per axis	5 h
Test directions	X-, Y- and Z-axis

Shocks

Specification	DIN EN 50155 (VDE 0115-200):2018-05
Pulse shape	Half-sine
Acceleration	30g
Shock duration	18 ms
Number of shocks per direction	3
Test directions	X-, Y- and Z-axis (pos. and neg.)

Ambient conditions

Ambient temperature (operation)	-60 °C ... 105 °C (max. short-term operating temperature RTI)
---------------------------------	---

Protective conductor terminal - XTV 6-TWIN-PE



1329507

<https://www.phoenixcontact.com/us/products/1329507>

	Elec.)
Ambient temperature (storage/transport)	-25 °C ... 60 °C (for a short time, not exceeding 24 h, -60 °C to +70 °C)
Ambient temperature (assembly)	-5 °C ... 70 °C
Ambient temperature (actuation)	-5 °C ... 70 °C
Permissible humidity (storage/transport)	30 % ... 70 %

Standards and regulations

Connection in acc. with standard	IEC 60947-7-2
----------------------------------	---------------

Mounting

Mounting type	NS 35/7,5
	NS 35/15

Phoenix Contact 2022 © - all rights reserved
<https://www.phoenixcontact.com>

Phoenix Contact USA
586 Fulling Mill Road
Middletown, PA 17057, United States
(+717) 944-1300
info@phoenixcon.com

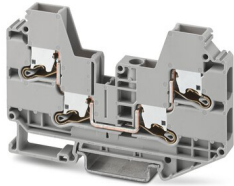
Feed-through terminal block - XTV 6-QUATTRO



1329511

<https://www.phoenixcontact.com/us/products/1329511>

Please be informed that the data shown in this PDF document is generated from our Online Catalog. Please find the complete data in the user documentation. Our General Terms of Use for Downloads are valid.



Feed-through terminal block, nom. voltage: 1000 V, nominal current: 41 A, connection method: Push-X-connection, Rated cross section: 6 mm², cross section: 1.5 mm² - 10 mm², mounting type: NS 35/7,5, NS 35/15, color: gray

Your advantages

- Fast, powerless conductor connection for all conductor types with the pretensioned contact spring
- A high level of flexibility when inserting conductors enables conductors with or without ferrules to be connected easily
- Clear conductor connection with the lateral connection direction and the clear pusher position
- Easy procurement of information – the QR code on the terminal block provides all important information about the product
- Terminal blocks with Push-X connection are part of the COMPLETE line system

Commercial Data

Item number	1329511
Packing unit	1 pc
Minimum order quantity	50 pc
Sales Key	B02
Product Key	BE2513
GTIN	4063151624422
Weight per Piece (including packing)	31.2 g
Weight per Piece (excluding packing)	31.2 g
Customs tariff number	85369010
Country of origin	CN

Feed-through terminal block - XTV 6-QUATTRO



1329511

<https://www.phoenixcontact.com/us/products/1329511>

Technical Data

Notes

General

Note	The max. load current must not be exceeded by the total current of all connected conductors.
------	--

Product properties

Product type	Feed-through terminal block
Number of positions	1
Area of application	Railway industry
	Machine building
	Plant engineering
Number of connections	4
Number of rows	1

Insulation characteristics

Overvoltage category	III
Degree of pollution	3

Electrical properties

Rated surge voltage	8 kV
Maximum power dissipation for nominal condition	1.31 W

Connection data

Number of connections per level	4
Nominal cross section	6 mm ²
Stripping length	10 mm ... 12 mm
Internal cylindrical gage	A5
	B4
Conductor cross section solid	1.5 mm ² ... 10 mm ²
Cross section AWG	16 ... 8
Conductor cross section flexible	1.5 mm ² ... 6 mm ²
Conductor cross section, flexible [AWG]	16 ... 10
Flexible conductor cross section flexible (ferrule, w/o plastic sleeve)	1.5 mm ² ... 6 mm ²
Flexible conductor cross section (ferrule with plastic sleeve)	1.5 mm ² ... 6 mm ²
2 conductors with the same cross section, flexible, with TWIN ferrule with plastic sleeve	1.5 mm ² ... 4 mm ²
Nominal current	41 A
Maximum load current	52 A (with 10 mm ² conductor cross section)
Nominal voltage	1000 V
Nominal cross section	6 mm ²

Dimensions

Feed-through terminal block - XTV 6-QUATTRO



1329511

<https://www.phoenixcontact.com/us/products/1329511>

Width	8.2 mm
End cover width	2.2 mm
Height	57.6 mm
Height NS 35/15	66.6 mm
Height NS 35/7,5	59.1 mm
Length	90.6 mm

Material specifications

Color	gray
Flammability rating according to UL 94	V0
Insulating material group	I
Insulating material	PA
Static insulating material application in cold	-60 °C
Relative insulation material temperature index (Elec., UL 746 B)	130 °C
Fire protection for rail vehicles (DIN EN 45545-2) R22	HL 1 - HL 3
Fire protection for rail vehicles (DIN EN 45545-2) R23	HL 1 - HL 3
Fire protection for rail vehicles (DIN EN 45545-2) R24	HL 1 - HL 3
Fire protection for rail vehicles (DIN EN 45545-2) R26	HL 1 - HL 3
Surface flammability NFPA 130 (ASTM E 162)	passed
Specific optical density of smoke NFPA 130 (ASTM E 662)	passed
Smoke gas toxicity NFPA 130 (SMP 800C)	passed

Mechanical properties

Mechanical data

Open side panel	Yes
-----------------	-----

Environmental and real-life conditions

Needle-flame test

Time of exposure	30 s
------------------	------

Oscillation/broadband noise

Specification	DIN EN 50155 (VDE 0115-200):2018-05
Spectrum	Service life test category 2, bogie-mounted
Frequency	$f_1 = 5 \text{ Hz}$ to $f_2 = 250 \text{ Hz}$
ASD level	6.12 (m/s ²)/Hz
Acceleration	3.12g
Test duration per axis	5 h
Test directions	X-, Y- and Z-axis

Shocks

Specification	DIN EN 50155 (VDE 0115-200):2018-05
Pulse shape	Half-sine
Acceleration	30g
Shock duration	18 ms

Feed-through terminal block - XTV 6-QUATTRO



1329511

<https://www.phoenixcontact.com/us/products/1329511>

Number of shocks per direction	3
Test directions	X-, Y- and Z-axis (pos. and neg.)

Ambient conditions

Ambient temperature (operation)	-60 °C ... 105 °C (max. short-term operating temperature RTI Elec.)
Ambient temperature (storage/transport)	-25 °C ... 60 °C (for a short time, not exceeding 24 h, -60 °C to +70 °C)
Ambient temperature (assembly)	-5 °C ... 70 °C
Ambient temperature (actuation)	-5 °C ... 70 °C
Permissible humidity (storage/transport)	30 % ... 70 %

Standards and regulations

Connection in acc. with standard	IEC 60947-7-1
----------------------------------	---------------

Mounting

Mounting type	NS 35/7,5
	NS 35/15

Phoenix Contact 2022 © - all rights reserved
<https://www.phoenixcontact.com>

Phoenix Contact USA
586 Fulling Mill Road
Middletown, PA 17057, United States
(+717) 944-1300
info@phoenixcon.com

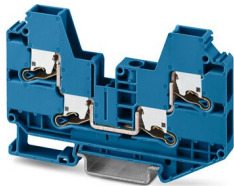
Feed-through terminal block - XTV 6-QUATTRO BU



1329512

<https://www.phoenixcontact.com/us/products/1329512>

Please be informed that the data shown in this PDF document is generated from our Online Catalog. Please find the complete data in the user documentation. Our General Terms of Use for Downloads are valid.



Feed-through terminal block, nom. voltage: 1000 V, nominal current: 41 A, connection method: Push-X-connection, Rated cross section: 6 mm², cross section: 1.5 mm² - 10 mm², mounting type: NS 35/7,5, NS 35/15, color: blue

Your advantages

- Fast, powerless conductor connection for all conductor types with the pretensioned contact spring
- A high level of flexibility when inserting conductors enables conductors with or without ferrules to be connected easily
- Clear conductor connection with the lateral connection direction and the clear pusher position
- Easy procurement of information – the QR code on the terminal block provides all important information about the product
- Terminal blocks with Push-X connection are part of the COMPLETE line system

Commercial Data

Item number	1329512
Packing unit	1 pc
Minimum order quantity	50 pc
Sales Key	B02
Product Key	BE2513
GTIN	4063151623074
Weight per Piece (including packing)	31.2 g
Weight per Piece (excluding packing)	31.2 g
Customs tariff number	85369010
Country of origin	CN

Feed-through terminal block - XTV 6-QUATTRO BU



1329512

<https://www.phoenixcontact.com/us/products/1329512>

Technical Data

Product properties

Product type	Feed-through terminal block
Number of positions	1
Area of application	Railway industry
	Machine building
	Plant engineering
Number of connections	4
Number of rows	1

Insulation characteristics

Overvoltage category	III
Degree of pollution	3

Electrical properties

Rated surge voltage	8 kV
Maximum power dissipation for nominal condition	1.31 W

Connection data

Number of connections per level	4
Nominal cross section	6 mm ²
Stripping length	10 mm ... 12 mm
Internal cylindrical gage	A5
	B4
Conductor cross section solid	1.5 mm ² ... 10 mm ²
Cross section AWG	16 ... 8
Conductor cross section flexible	1.5 mm ² ... 6 mm ²
Conductor cross section, flexible [AWG]	16 ... 10
Flexible conductor cross section flexible (ferrule, w/o plastic sleeve)	1.5 mm ² ... 6 mm ²
Flexible conductor cross section (ferrule with plastic sleeve)	1.5 mm ² ... 6 mm ²
2 conductors with the same cross section, flexible, with TWIN ferrule with plastic sleeve	1.5 mm ² ... 4 mm ²
Nominal current	41 A
Maximum load current	52 A (with 10 mm ² conductor cross section)
Nominal voltage	1000 V
Nominal cross section	6 mm ²

Dimensions

Width	8.2 mm
End cover width	2.2 mm
Height	57.6 mm
Height NS 35/15	66.6 mm
Height NS 35/7,5	59.1 mm

Feed-through terminal block - XTV 6-QUATTRO BU



1329512

<https://www.phoenixcontact.com/us/products/1329512>

Length	90.6 mm
--------	---------

Material specifications

Color	blue
Flammability rating according to UL 94	V0
Insulating material group	I
Insulating material	PA
Static insulating material application in cold	-60 °C
Relative insulation material temperature index (Elec., UL 746 B)	130 °C
Fire protection for rail vehicles (DIN EN 45545-2) R22	HL 1 - HL 3
Fire protection for rail vehicles (DIN EN 45545-2) R23	HL 1 - HL 3
Fire protection for rail vehicles (DIN EN 45545-2) R24	HL 1 - HL 3
Fire protection for rail vehicles (DIN EN 45545-2) R26	HL 1 - HL 3
Surface flammability NFPA 130 (ASTM E 162)	passed
Specific optical density of smoke NFPA 130 (ASTM E 662)	passed
Smoke gas toxicity NFPA 130 (SMP 800C)	passed

Mechanical properties

Mechanical data

Open side panel	Yes
-----------------	-----

Environmental and real-life conditions

Ambient conditions

Ambient temperature (operation)	-60 °C ... 105 °C (max. short-term operating temperature RTI Elec.)
Ambient temperature (storage/transport)	-25 °C ... 60 °C (for a short time, not exceeding 24 h, -60 °C to +70 °C)
Ambient temperature (assembly)	-5 °C ... 70 °C
Ambient temperature (actuation)	-5 °C ... 70 °C
Permissible humidity (storage/transport)	30 % ... 70 %

Standards and regulations

Connection in acc. with standard	IEC 60947-7-1
----------------------------------	---------------

Mounting

Mounting type	NS 35/7,5
	NS 35/15

Feed-through terminal block - XTV 6-QUATTRO BU



1329512

<https://www.phoenixcontact.com/us/products/1329512>

Phoenix Contact 2022 © - all rights reserved

<https://www.phoenixcontact.com>

Phoenix Contact USA
586 Fulling Mill Road
Middletown, PA 17057, United States
(+717) 944-1300
info@phoenixcon.com

Protective conductor terminal - XTV 6-QUATTRO-PE



1329513

<https://www.phoenixcontact.com/us/products/1329513>

Please be informed that the data shown in this PDF document is generated from our Online Catalog. Please find the complete data in the user documentation. Our General Terms of Use for Downloads are valid.



Protective conductor terminal, number of connections: 4, number of positions: 1, connection method: Push-X-connection, cross section: 1.5 mm² - 10 mm², mounting type: NS 35/7,5, NS 35/15, color: green/yellow

Your advantages

- Fast, powerless conductor connection for all conductor types with the pretensioned contact spring
- A high level of flexibility when inserting conductors enables conductors with or without ferrules to be connected easily
- Clear conductor connection with the lateral connection direction and the clear pusher position
- Easy procurement of information – the QR code on the terminal block provides all important information about the product
- Terminal blocks with Push-X connection are part of the COMPLETE line system

Commercial Data

Item number	1329513
Packing unit	1 pc
Minimum order quantity	50 pc
Sales Key	B02
Product Key	BE2523
GTIN	4063151624330
Weight per Piece (including packing)	33 g
Weight per Piece (excluding packing)	33 g
Customs tariff number	85369010
Country of origin	CN

Technical Data

Notes

General

Note	When establishing a connection on the open housing side of a feed-through modular terminal block of the same series and size, the block must be provided with a cover if the expected insulation voltage is >320 V.
	The max. load current must not be exceeded by the total current of all connected conductors.

Product properties

Product type	Ground terminal block
Number of positions	1
Area of application	Railway industry
	Machine building
	Plant engineering
Number of connections	4
Number of rows	1

Insulation characteristics

Overvoltage category	III
Degree of pollution	3

Electrical properties

Rated surge voltage	8 kV
Maximum power dissipation for nominal condition	0 W

Connection data

Number of connections per level	4
Nominal cross section	6 mm ²
Stripping length	10 mm ... 12 mm
Internal cylindrical gage	A5
	B4
Conductor cross section solid	1.5 mm ² ... 10 mm ²
Cross section AWG	16 ... 8
Conductor cross section flexible	1.5 mm ² ... 6 mm ²
Conductor cross section, flexible [AWG]	16 ... 10
Flexible conductor cross section flexible (ferrule, w/o plastic sleeve)	1.5 mm ² ... 6 mm ²
Flexible conductor cross section (ferrule with plastic sleeve)	1.5 mm ² ... 6 mm ²

Dimensions

Width	8.2 mm
End cover width	2.2 mm

Protective conductor terminal - XTV 6-QUATTRO-PE



1329513

<https://www.phoenixcontact.com/us/products/1329513>

Height	57.6 mm
Height NS 35/15	66.6 mm
Height NS 35/7,5	59.1 mm
Length	90.6 mm

Material specifications

Color	green/yellow
Flammability rating according to UL 94	V0
Insulating material group	I
Insulating material	PA
Static insulating material application in cold	-60 °C
Relative insulation material temperature index (Elec., UL 746 B)	130 °C
Fire protection for rail vehicles (DIN EN 45545-2) R22	HL 1 - HL 3
Fire protection for rail vehicles (DIN EN 45545-2) R23	HL 1 - HL 3
Fire protection for rail vehicles (DIN EN 45545-2) R24	HL 1 - HL 3
Fire protection for rail vehicles (DIN EN 45545-2) R26	HL 1 - HL 3
Surface flammability NFPA 130 (ASTM E 162)	passed
Specific optical density of smoke NFPA 130 (ASTM E 662)	passed
Smoke gas toxicity NFPA 130 (SMP 800C)	passed

Mechanical properties

Mechanical data

Open side panel	Yes
-----------------	-----

Environmental and real-life conditions

Oscillation/broadband noise

Specification	DIN EN 50155 (VDE 0115-200):2018-05
Spectrum	Service life test category 2, bogie-mounted
Frequency	$f_1 = 5 \text{ Hz}$ to $f_2 = 250 \text{ Hz}$
ASD level	$6.12 \text{ (m/s}^2\text{)}^2\text{/Hz}$
Acceleration	3.12g
Test duration per axis	5 h
Test directions	X-, Y- and Z-axis

Shocks

Specification	DIN EN 50155 (VDE 0115-200):2018-05
Pulse shape	Half-sine
Acceleration	30g
Shock duration	18 ms
Number of shocks per direction	3
Test directions	X-, Y- and Z-axis (pos. and neg.)

Ambient conditions

Ambient temperature (operation)	-60 °C ... 105 °C (max. short-term operating temperature RTI)
---------------------------------	---

Protective conductor terminal - XTV 6-QUATTRO-PE



1329513

<https://www.phoenixcontact.com/us/products/1329513>

	Elec.)
Ambient temperature (storage/transport)	-25 °C ... 60 °C (for a short time, not exceeding 24 h, -60 °C to +70 °C)
Ambient temperature (assembly)	-5 °C ... 70 °C
Ambient temperature (actuation)	-5 °C ... 70 °C
Permissible humidity (storage/transport)	30 % ... 70 %

Standards and regulations

Connection in acc. with standard	IEC 60947-7-2
----------------------------------	---------------

Mounting

Mounting type	NS 35/7,5
	NS 35/15

Phoenix Contact 2022 © - all rights reserved

<https://www.phoenixcontact.com>

Phoenix Contact USA
586 Fulling Mill Road
Middletown, PA 17057, United States
(+717) 944-1300
info@phoenixcon.com

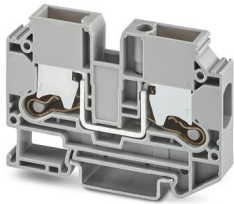
Feed-through terminal block - XTV 10



1329547

<https://www.phoenixcontact.com/us/products/1329547>

Please be informed that the data shown in this PDF document is generated from our Online Catalog. Please find the complete data in the user documentation. Our General Terms of Use for Downloads are valid.



Feed-through terminal block, nom. voltage: 1000 V, nominal current: 57 A, connection method: Push-X-connection, Rated cross section: 10 mm², cross section: 1.5 mm² - 16 mm², mounting type: NS 35/7,5, NS 35/15, color: gray

Your advantages

- Fast, powerless conductor connection for all conductor types with the pretensioned contact spring
- A high level of flexibility when inserting conductors enables conductors with or without ferrules to be connected easily
- Clear conductor connection with the lateral connection direction and the clear pusher position
- Easy procurement of information – the QR code on the terminal block provides all important information about the product
- Terminal blocks with Push-X connection are part of the COMPLETE line system

Commercial Data

Item number	1329547
Packing unit	1 pc
Minimum order quantity	50 pc
Sales Key	B02
Product Key	BE2511
GTIN	4063151622084
Weight per Piece (including packing)	32 g
Weight per Piece (excluding packing)	32 g
Customs tariff number	85369010
Country of origin	CN

Feed-through terminal block - XTV 10



1329547

<https://www.phoenixcontact.com/us/products/1329547>

Technical Data

Product properties

Product type	Feed-through terminal block
Number of positions	1
Area of application	Railway industry
	Machine building
	Plant engineering
Number of connections	2
Number of rows	1
Potentials	1

Insulation characteristics

Overvoltage category	III
Degree of pollution	3

Electrical properties

Maximum power dissipation for nominal condition	1.82 W
Test surge voltage	8 kV

Connection data

Number of connections per level	2
Stripping length	17 mm ... 19 mm
Internal cylindrical gage	A6
Conductor cross section solid	1.5 mm ² ... 16 mm ²
Cross section AWG	16 ... 6
Conductor cross section flexible	2.5 mm ² ... 10 mm ²
Conductor cross section, flexible [AWG]	14 ... 8
Flexible conductor cross section flexible (ferrule, w/o plastic sleeve)	1.5 mm ² ... 10 mm ²
Flexible conductor cross section (ferrule with plastic sleeve)	1.5 mm ² ... 10 mm ²
2 conductors with the same cross section, flexible, with TWIN ferrule with plastic sleeve	1.5 mm ² ... 4 mm ²
Nominal current	57 A
Maximum load current	70 A (with 16 mm ² conductor cross section)
Nominal voltage	1000 V
Nominal cross section	10 mm ²

Dimensions

Width	10.2 mm
End cover width	2.2 mm
Height	48.8 mm
Height NS 35/15	57.8 mm
Height NS 35/7,5	50.3 mm
Length	72 mm

Feed-through terminal block - XTV 10



1329547

<https://www.phoenixcontact.com/us/products/1329547>

Material specifications

Color	gray
Flammability rating according to UL 94	V0
Insulating material group	I
Insulating material	PA
Static insulating material application in cold	-60 °C
Relative insulation material temperature index (Elec., UL 746 B)	130 °C
Fire protection for rail vehicles (DIN EN 45545-2) R22	HL 1 - HL 3
Fire protection for rail vehicles (DIN EN 45545-2) R23	HL 1 - HL 3
Fire protection for rail vehicles (DIN EN 45545-2) R24	HL 1 - HL 3
Fire protection for rail vehicles (DIN EN 45545-2) R26	HL 1 - HL 3
Surface flammability NFPA 130 (ASTM E 162)	passed
Specific optical density of smoke NFPA 130 (ASTM E 662)	passed
Smoke gas toxicity NFPA 130 (SMP 800C)	passed

Electrical tests

Surge voltage test

Result	Test passed
--------	-------------

Temperature-rise test

Requirement temperature-rise test	Increase in temperature \leq 45 K
Result	Test passed
Short-time withstand current 10 mm ²	1.2 kA
Result	Test passed

Power-frequency withstand voltage

Test voltage setpoint	2.2 kV
Result	Test passed

Mechanical properties

Mechanical data

Open side panel	Yes
-----------------	-----

Mechanical tests

Mechanical strength

Result	Test passed
--------	-------------

Attachment on the carrier

DIN rail/fixing support	NS 35
Result	Test passed

Test for conductor damage and slackening

Rotation speed	9 rpm
Revolutions	135

Feed-through terminal block - XTV 10



1329547

<https://www.phoenixcontact.com/us/products/1329547>

Conductor cross section/weight	1.5 mm ² / 0.4 kg
	10 mm ² / 2 kg
	16 mm ² / 2.9 kg
Result	Test passed

Environmental and real-life conditions

Aging

Temperature cycles	192
	192
	192
	192
	192
	192
Result	Test passed
	Test passed
	Test passed
	Test passed
	Test passed
	Test passed

Needle-flame test

Time of exposure	30 s
Result	Test passed

Oscillation/broadband noise

Specification	DIN EN 50155 (VDE 0115-200):2018-05
Spectrum	Service life test category 2, bogie-mounted
Frequency	$f_1 = 5 \text{ Hz}$ to $f_2 = 250 \text{ Hz}$
ASD level	6.12 (m/s ²) ² /Hz
Acceleration	3.12g
Test duration per axis	5 h
Test directions	X-, Y- and Z-axis
Result	Test passed

Shocks

Specification	DIN EN 50155 (VDE 0115-200):2018-05
Pulse shape	Half-sine
Acceleration	30g
Shock duration	18 ms
Number of shocks per direction	3
Test directions	X-, Y- and Z-axis (pos. and neg.)
Result	Test passed

Ambient conditions

Ambient temperature (operation)	-60 °C ... 105 °C (max. short-term operating temperature RTI Elec.)
---------------------------------	---

Feed-through terminal block - XTV 10



1329547

<https://www.phoenixcontact.com/us/products/1329547>

Ambient temperature (storage/transport)	-25 °C ... 60 °C (for a short time, not exceeding 24 h, -60 °C to +70 °C)
Ambient temperature (assembly)	-5 °C ... 70 °C
Ambient temperature (actuation)	-5 °C ... 70 °C
Permissible humidity (storage/transport)	30 % ... 70 %

Standards and regulations

Connection in acc. with standard	IEC 60947-7-1
----------------------------------	---------------

Mounting

Mounting type	NS 35/7,5
	NS 35/15

Phoenix Contact 2022 © - all rights reserved

<https://www.phoenixcontact.com>

Phoenix Contact USA
586 Fulling Mill Road
Middletown, PA 17057, United States
(+717) 944-1300
info@phoenixcon.com

Feed-through terminal block - XTV 10 BU



1329549

<https://www.phoenixcontact.com/us/products/1329549>

Please be informed that the data shown in this PDF document is generated from our Online Catalog. Please find the complete data in the user documentation. Our General Terms of Use for Downloads are valid.



Feed-through terminal block, nom. voltage: 1000 V, nominal current: 57 A, connection method: Push-X-connection, Rated cross section: 10 mm², cross section: 1.5 mm² - 16 mm², mounting type: NS 35/7,5, NS 35/15, color: blue

Your advantages

- Fast, powerless conductor connection for all conductor types with the pretensioned contact spring
- A high level of flexibility when inserting conductors enables conductors with or without ferrules to be connected easily
- Clear conductor connection with the lateral connection direction and the clear pusher position
- Easy procurement of information – the QR code on the terminal block provides all important information about the product
- Terminal blocks with Push-X connection are part of the COMPLETE line system

Commercial Data

Item number	1329549
Packing unit	1 pc
Minimum order quantity	50 pc
Sales Key	B02
Product Key	BE2511
GTIN	4063151623197
Weight per Piece (including packing)	32 g
Weight per Piece (excluding packing)	32 g
Customs tariff number	85369010
Country of origin	CN

Feed-through terminal block - XTV 10 BU



1329549

<https://www.phoenixcontact.com/us/products/1329549>

Technical Data

Notes

General

Note	When establishing a connection on the open housing side of a feed-through modular terminal block of the same series and size, the block must be provided with a cover if the expected insulation voltage is >320 V.
------	---

Product properties

Product type	Feed-through terminal block
Number of positions	1
Area of application	Railway industry
	Machine building
	Plant engineering
Number of connections	2
Number of rows	1

Insulation characteristics

Overvoltage category	III
Degree of pollution	3

Electrical properties

Maximum power dissipation for nominal condition	1.82 W
Test surge voltage	8 kV

Connection data

Number of connections per level	2
Stripping length	17 mm ... 19 mm
Internal cylindrical gage	A6
Conductor cross section solid	1.5 mm ² ... 16 mm ²
Cross section AWG	16 ... 6
Conductor cross section flexible	2.5 mm ² ... 10 mm ²
Conductor cross section, flexible [AWG]	14 ... 8
Flexible conductor cross section flexible (ferrule, w/o plastic sleeve)	1.5 mm ² ... 10 mm ²
Flexible conductor cross section (ferrule with plastic sleeve)	1.5 mm ² ... 10 mm ²
2 conductors with the same cross section, flexible, with TWIN ferrule with plastic sleeve	1.5 mm ² ... 4 mm ²
Nominal current	57 A
Maximum load current	70 A (with 16 mm ² conductor cross section)
Nominal voltage	1000 V
Nominal cross section	10 mm ²

Dimensions

Feed-through terminal block - XTV 10 BU



1329549

<https://www.phoenixcontact.com/us/products/1329549>

Width	10.2 mm
End cover width	2.2 mm
Height	48.8 mm
Height NS 35/15	57.8 mm
Height NS 35/7,5	50.3 mm
Length	72 mm

Material specifications

Color	blue
Flammability rating according to UL 94	V0
Insulating material group	I
Insulating material	PA

Mechanical properties

Mechanical data

Open side panel	Yes
-----------------	-----

Environmental and real-life conditions

Needle-flame test

Time of exposure	30 s
------------------	------

Oscillation/broadband noise

Specification	DIN EN 50155 (VDE 0115-200):2018-05
Spectrum	Service life test category 2, bogie-mounted
Frequency	$f_1 = 5 \text{ Hz}$ to $f_2 = 250 \text{ Hz}$
ASD level	$6.12 \text{ (m/s}^2\text{)}^2\text{/Hz}$
Acceleration	3.12g
Test duration per axis	5 h
Test directions	X-, Y- and Z-axis

Shocks

Specification	DIN EN 50155 (VDE 0115-200):2018-05
Pulse shape	Half-sine
Acceleration	30g
Shock duration	18 ms
Number of shocks per direction	3
Test directions	X-, Y- and Z-axis (pos. and neg.)

Ambient conditions

Ambient temperature (operation)	-60 °C ... 105 °C (max. short-term operating temperature RTI Elec.)
Ambient temperature (storage/transport)	-25 °C ... 60 °C (for a short time, not exceeding 24 h, -60 °C to +70 °C)
Ambient temperature (assembly)	-5 °C ... 70 °C
Ambient temperature (actuation)	-5 °C ... 70 °C

Feed-through terminal block - XTV 10 BU



1329549

<https://www.phoenixcontact.com/us/products/1329549>

Permissible humidity (storage/transport)	30 % ... 70 %
--	---------------

Standards and regulations

Connection in acc. with standard	IEC 60947-7-1
----------------------------------	---------------

Mounting

Mounting type	NS 35/7,5
	NS 35/15

Phoenix Contact 2022 © - all rights reserved

<https://www.phoenixcontact.com>

Phoenix Contact USA
586 Fulling Mill Road
Middletown, PA 17057, United States
(+717) 944-1300
info@phoenixcon.com

Protective conductor terminal - XTV 10-PE



1329550

<https://www.phoenixcontact.com/us/products/1329550>

Please be informed that the data shown in this PDF document is generated from our Online Catalog. Please find the complete data in the user documentation. Our General Terms of Use for Downloads are valid.



Protective conductor terminal, number of connections: 2, number of positions: 1, connection method: Push-X-connection, Rated cross section: 10 mm², cross section: 1.5 mm² - 16 mm², mounting type: NS 35/7,5, NS 35/15, color: green/yellow

Your advantages

- Fast, powerless conductor connection for all conductor types with the pretensioned contact spring
- A high level of flexibility when inserting conductors enables conductors with or without ferrules to be connected easily
- Clear conductor connection with the lateral connection direction and the clear pusher position
- Easy procurement of information – the QR code on the terminal block provides all important information about the product
- Terminal blocks with Push-X connection are part of the COMPLETE line system

Commercial Data

Item number	1329550
Packing unit	1 pc
Minimum order quantity	50 pc
Sales Key	B02
Product Key	BE2521
GTIN	4063151624477
Weight per Piece (including packing)	34 g
Weight per Piece (excluding packing)	34 g
Customs tariff number	85369010
Country of origin	CN

Protective conductor terminal - XTV 10-PE



1329550

<https://www.phoenixcontact.com/us/products/1329550>

Technical Data

Product properties

Product type	Ground terminal block
Number of positions	1
Area of application	Railway industry
	Machine building
	Plant engineering
Number of connections	2
Number of rows	1

Insulation characteristics

Overvoltage category	III
Degree of pollution	3

Electrical properties

Maximum power dissipation for nominal condition	0 W
Test surge voltage	8 kV

Connection data

Number of connections per level	2
Stripping length	17 mm ... 19 mm
Internal cylindrical gage	A6
Conductor cross section solid	1.5 mm ² ... 16 mm ²
Cross section AWG	16 ... 6
Conductor cross section flexible	2.5 mm ² ... 10 mm ²
Conductor cross section, flexible [AWG]	14 ... 8
Flexible conductor cross section flexible (ferrule, w/o plastic sleeve)	1.5 mm ² ... 10 mm ²
Flexible conductor cross section (ferrule with plastic sleeve)	1.5 mm ² ... 10 mm ²
Nominal cross section	10 mm ²

Dimensions

Width	10.2 mm
End cover width	2.2 mm
Height	48.8 mm
Height NS 35/15	57.8 mm
Height NS 35/7,5	50.3 mm
Length	72 mm

Material specifications

Color	green/yellow
Flammability rating according to UL 94	V0
Insulating material group	I

Protective conductor terminal - XTV 10-PE



1329550

<https://www.phoenixcontact.com/us/products/1329550>

Insulating material	PA
Static insulating material application in cold	-60 °C
Relative insulation material temperature index (Elec., UL 746 B)	130 °C
Fire protection for rail vehicles (DIN EN 45545-2) R22	HL 1 - HL 3
Fire protection for rail vehicles (DIN EN 45545-2) R23	HL 1 - HL 3
Fire protection for rail vehicles (DIN EN 45545-2) R24	HL 1 - HL 3
Fire protection for rail vehicles (DIN EN 45545-2) R26	HL 1 - HL 3
Surface flammability NFPA 130 (ASTM E 162)	passed
Specific optical density of smoke NFPA 130 (ASTM E 662)	passed
Smoke gas toxicity NFPA 130 (SMP 800C)	passed

Mechanical properties

Mechanical data

Open side panel	Yes
-----------------	-----

Environmental and real-life conditions

Oscillation/broadband noise

Specification	DIN EN 50155 (VDE 0115-200):2018-05
Spectrum	Service life test category 2, bogie-mounted
Frequency	$f_1 = 5 \text{ Hz}$ to $f_2 = 250 \text{ Hz}$
ASD level	6.12 (m/s ²)/Hz
Acceleration	3.12g
Test duration per axis	5 h
Test directions	X-, Y- and Z-axis

Shocks

Specification	DIN EN 50155 (VDE 0115-200):2018-05
Pulse shape	Half-sine
Acceleration	30g
Shock duration	18 ms
Number of shocks per direction	3
Test directions	X-, Y- and Z-axis (pos. and neg.)

Ambient conditions

Ambient temperature (operation)	-60 °C ... 105 °C (max. short-term operating temperature RTI Elec.)
Ambient temperature (storage/transport)	-25 °C ... 60 °C (for a short time, not exceeding 24 h, -60 °C to +70 °C)
Ambient temperature (assembly)	-5 °C ... 70 °C
Ambient temperature (actuation)	-5 °C ... 70 °C
Permissible humidity (storage/transport)	30 % ... 70 %

Standards and regulations

Connection in acc. with standard	IEC 60947-7-2
----------------------------------	---------------

Protective conductor terminal - XTV 10-PE



1329550

<https://www.phoenixcontact.com/us/products/1329550>

Mounting

Mounting type	NS 35/7,5
	NS 35/15

Phoenix Contact 2022 © - all rights reserved

<https://www.phoenixcontact.com>

Phoenix Contact USA
586 Fulling Mill Road
Middletown, PA 17057, United States
(+717) 944-1300
info@phoenixcon.com

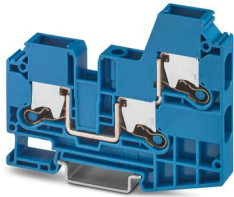
Feed-through terminal block - XTV 10-TWIN BU



1329605

<https://www.phoenixcontact.com/us/products/1329605>

Please be informed that the data shown in this PDF document is generated from our Online Catalog. Please find the complete data in the user documentation. Our General Terms of Use for Downloads are valid.



Feed-through terminal block, nom. voltage: 1000 V, nominal current: 57 A, connection method: Push-X-connection, Rated cross section: 10 mm², cross section: 1.5 mm² - 16 mm², mounting type: NS 35/7,5, NS 35/15, color: blue

Your advantages

- Fast, powerless conductor connection for all conductor types with the pretensioned contact spring
- A high level of flexibility when inserting conductors enables conductors with or without ferrules to be connected easily
- Clear conductor connection with the lateral connection direction and the clear pusher position
- Easy procurement of information – the QR code on the terminal block provides all important information about the product
- Terminal blocks with Push-X connection are part of the COMPLETE line system

Commercial Data

Item number	1329605
Packing unit	1 pc
Minimum order quantity	50 pc
Sales Key	B02
Product Key	BE2512
GTIN	4063151624491
Weight per Piece (including packing)	44 g
Weight per Piece (excluding packing)	44 g
Customs tariff number	85369010
Country of origin	CN

Feed-through terminal block - XTV 10-TWIN BU



1329605

<https://www.phoenixcontact.com/us/products/1329605>

Technical Data

Notes

General

Note	When establishing a connection on the open housing side of a feed-through modular terminal block of the same series and size, the block must be provided with a cover if the expected insulation voltage is >320 V.
	The max. load current must not be exceeded by the total current of all connected conductors.

Product properties

Product type	Feed-through terminal block
Number of positions	1
Area of application	Railway industry
	Machine building
	Plant engineering
Number of connections	2
Number of rows	1

Insulation characteristics

Overvoltage category	III
Degree of pollution	3

Electrical properties

Maximum power dissipation for nominal condition	1.82 W
Test surge voltage	8 kV

Connection data

Number of connections per level	2
Stripping length	17 mm ... 19 mm
Internal cylindrical gage	A6
Conductor cross section solid	1.5 mm ² ... 16 mm ²
Cross section AWG	16 ... 6
Conductor cross section flexible	2.5 mm ² ... 10 mm ²
Conductor cross section, flexible [AWG]	14 ... 8
Flexible conductor cross section flexible (ferrule, w/o plastic sleeve)	1.5 mm ² ... 10 mm ²
Flexible conductor cross section (ferrule with plastic sleeve)	1.5 mm ² ... 10 mm ²
2 conductors with the same cross section, flexible, with TWIN ferrule with plastic sleeve	1.5 mm ² ... 4 mm ²
Nominal current	57 A
Maximum load current	70 A (with 16 mm ² conductor cross section)
Nominal voltage	1000 V
Nominal cross section	10 mm ²

Feed-through terminal block - XTV 10-TWIN BU



1329605

<https://www.phoenixcontact.com/us/products/1329605>

Dimensions

Width	10.2 mm
End cover width	2.2 mm
Height	68.5 mm
Height NS 35/15	77.5 mm
Height NS 35/7,5	70 mm
Length	89.1 mm

Material specifications

Color	blue
Flammability rating according to UL 94	V0
Insulating material group	I
Insulating material	PA

Mechanical properties

Mechanical data

Open side panel	Yes
-----------------	-----

Environmental and real-life conditions

Needle-flame test

Time of exposure	30 s
------------------	------

Oscillation/broadband noise

Specification	DIN EN 50155 (VDE 0115-200):2018-05
Spectrum	Service life test category 2, bogie-mounted
Frequency	$f_1 = 5 \text{ Hz}$ to $f_2 = 250 \text{ Hz}$
ASD level	6.12 (m/s ²) ² /Hz
Acceleration	3.12g
Test duration per axis	5 h
Test directions	X-, Y- and Z-axis

Shocks

Specification	DIN EN 50155 (VDE 0115-200):2018-05
Pulse shape	Half-sine
Acceleration	30g
Shock duration	18 ms
Number of shocks per direction	3
Test directions	X-, Y- and Z-axis (pos. and neg.)

Ambient conditions

Ambient temperature (operation)	-60 °C ... 105 °C (max. short-term operating temperature RTI Elec.)
Ambient temperature (storage/transport)	-25 °C ... 60 °C (for a short time, not exceeding 24 h, -60 °C to +70 °C)

Feed-through terminal block - XTV 10-TWIN BU



1329605

<https://www.phoenixcontact.com/us/products/1329605>

Ambient temperature (assembly)	-5 °C ... 70 °C
Ambient temperature (actuation)	-5 °C ... 70 °C
Permissible humidity (storage/transport)	30 % ... 70 %

Standards and regulations

Connection in acc. with standard	IEC 60947-7-1
----------------------------------	---------------

Mounting

Mounting type	NS 35/7,5
	NS 35/15

Phoenix Contact 2022 © - all rights reserved

<https://www.phoenixcontact.com>

Phoenix Contact USA
586 Fulling Mill Road
Middletown, PA 17057, United States
(+717) 944-1300
info@phoenixcon.com

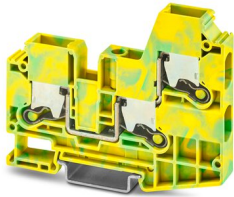
Protective conductor terminal - XTV 10-TWIN-PE



1329606

<https://www.phoenixcontact.com/us/products/1329606>

Please be informed that the data shown in this PDF document is generated from our Online Catalog. Please find the complete data in the user documentation. Our General Terms of Use for Downloads are valid.



Protective conductor terminal, number of connections: 2, number of positions: 1, connection method: Push-X-connection, Rated cross section: 10 mm², cross section: 1.5 mm² - 16 mm², mounting type: NS 35/7,5, NS 35/15, color: green/yellow

Your advantages

- Fast, powerless conductor connection for all conductor types with the pretensioned contact spring
- A high level of flexibility when inserting conductors enables conductors with or without ferrules to be connected easily
- Clear conductor connection with the lateral connection direction and the clear pusher position
- Easy procurement of information – the QR code on the terminal block provides all important information about the product
- Terminal blocks with Push-X connection are part of the COMPLETE line system

Commercial Data

Item number	1329606
Packing unit	1 pc
Minimum order quantity	50 pc
Sales Key	B02
Product Key	BE2522
GTIN	4063151624194
Weight per Piece (including packing)	44 g
Weight per Piece (excluding packing)	44 g
Customs tariff number	85369010
Country of origin	CN

Protective conductor terminal - XTV 10-TWIN-PE



1329606

<https://www.phoenixcontact.com/us/products/1329606>

Technical Data

Notes

General

Note	When establishing a connection on the open housing side of a feed-through modular terminal block of the same series and size, the block must be provided with a cover if the expected insulation voltage is >320 V.
	The max. load current must not be exceeded by the total current of all connected conductors.

Product properties

Product type	Ground terminal block
Number of positions	1
Area of application	Railway industry
	Machine building
	Plant engineering
Number of connections	2
Number of rows	1

Insulation characteristics

Overvoltage category	III
Degree of pollution	3

Electrical properties

Maximum power dissipation for nominal condition	0 W
Test surge voltage	8 kV

Connection data

Number of connections per level	2
Stripping length	17 mm ... 19 mm
Internal cylindrical gage	A6
Conductor cross section solid	1.5 mm ² ... 16 mm ²
Cross section AWG	16 ... 6
Conductor cross section flexible	2.5 mm ² ... 10 mm ²
Conductor cross section, flexible [AWG]	14 ... 8
Flexible conductor cross section flexible (ferrule, w/o plastic sleeve)	1.5 mm ² ... 10 mm ²
Flexible conductor cross section (ferrule with plastic sleeve)	1.5 mm ² ... 10 mm ²
Nominal cross section	10 mm ²

Dimensions

Width	10.2 mm
End cover width	2.2 mm
Height	68.5 mm

Protective conductor terminal - XTV 10-TWIN-PE



1329606

<https://www.phoenixcontact.com/us/products/1329606>

Height NS 35/15	77.5 mm
Height NS 35/7,5	70 mm
Length	89.1 mm

Material specifications

Color	green/yellow
Flammability rating according to UL 94	V0
Insulating material group	I
Insulating material	PA
Static insulating material application in cold	-60 °C
Relative insulation material temperature index (Elec., UL 746 B)	130 °C

Mechanical properties

Mechanical data

Open side panel	Yes
-----------------	-----

Environmental and real-life conditions

Oscillation/broadband noise

Specification	DIN EN 50155 (VDE 0115-200):2018-05
Spectrum	Service life test category 2, bogie-mounted
Frequency	$f_1 = 5 \text{ Hz}$ to $f_2 = 250 \text{ Hz}$
ASD level	6.12 (m/s ²) ² /Hz
Acceleration	3.12g
Test duration per axis	5 h
Test directions	X-, Y- and Z-axis

Shocks

Specification	DIN EN 50155 (VDE 0115-200):2018-05
Pulse shape	Half-sine
Acceleration	30g
Shock duration	18 ms
Number of shocks per direction	3
Test directions	X-, Y- and Z-axis (pos. and neg.)

Ambient conditions

Ambient temperature (operation)	-60 °C ... 105 °C (max. short-term operating temperature RTI Elec.)
Ambient temperature (storage/transport)	-25 °C ... 60 °C (for a short time, not exceeding 24 h, -60 °C to +70 °C)
Ambient temperature (assembly)	-5 °C ... 70 °C
Ambient temperature (actuation)	-5 °C ... 70 °C
Permissible humidity (storage/transport)	30 % ... 70 %

Standards and regulations

Connection in acc. with standard	IEC 60947-7-2
----------------------------------	---------------

Protective conductor terminal - XTV 10-TWIN-PE



1329606

<https://www.phoenixcontact.com/us/products/1329606>

Mounting

Mounting type	NS 35/7,5
	NS 35/15

Phoenix Contact 2022 © - all rights reserved

<https://www.phoenixcontact.com>

Phoenix Contact USA
586 Fulling Mill Road
Middletown, PA 17057, United States
(+717) 944-1300
info@phoenixcon.com

Feed-through terminal block - XTV 16



1329672

<https://www.phoenixcontact.com/us/products/1329672>

Please be informed that the data shown in this PDF document is generated from our Online Catalog. Please find the complete data in the user documentation. Our General Terms of Use for Downloads are valid.



Feed-through terminal block, nom. voltage: 1000 V, nominal current: 76 A, connection method: Push-X-connection, Rated cross section: 16 mm², cross section: 2.5 mm² - 25 mm², mounting type: NS 35/7,5, NS 35/15, color: gray

Your advantages

- Fast, powerless conductor connection for all conductor types with the pretensioned contact spring
- A high level of flexibility when inserting conductors enables conductors with or without ferrules to be connected easily
- Clear conductor connection with the lateral connection direction and the clear pusher position
- Easy procurement of information – the QR code on the terminal block provides all important information about the product
- Terminal blocks with Push-X connection are part of the COMPLETE line system

Commercial Data

Item number	1329672
Packing unit	1 pc
Minimum order quantity	50 pc
Sales Key	00
Product Key	BE2511
GTIN	4063151624910
Weight per Piece (including packing)	44 g
Weight per Piece (excluding packing)	44 g
Customs tariff number	85369010
Country of origin	CN

Feed-through terminal block - XTV 16



1329672

<https://www.phoenixcontact.com/us/products/1329672>

Technical Data

Product properties

Product type	Feed-through terminal block
Number of positions	1
Area of application	Railway industry
	Machine building
	Plant engineering
Number of connections	2
Number of rows	1

Insulation characteristics

Overvoltage category	III
Degree of pollution	3

Electrical properties

Maximum power dissipation for nominal condition	2.43 W
---	--------

Connection data

Number of connections per level	2
Stripping length	18 mm ... 20 mm
Internal cylindrical gage	A7
	B7
Conductor cross section solid	2.5 mm ² ... 25 mm ²
Cross section AWG	14 ... 4
Conductor cross section flexible	4 mm ² ... 25 mm ²
Conductor cross section, flexible [AWG]	12 ... 4
Flexible conductor cross section flexible (ferrule, w/o plastic sleeve)	2.5 mm ² ... 16 mm ²
Flexible conductor cross section (ferrule with plastic sleeve)	2.5 mm ² ... 16 mm ²
2 conductors with the same cross section, flexible, with TWIN ferrule with plastic sleeve	1.5 mm ² ... 10 mm ²
Nominal current	76 A
Maximum load current	85 A (with 25 mm ² conductor cross section, rigid)
Nominal voltage	1000 V
Nominal cross section	16 mm ²

Dimensions

Width	12.2 mm
Height	49.8 mm
Height NS 35/15	58.8 mm
Height NS 35/7,5	51.3 mm
Length	77.2 mm

Material specifications

Feed-through terminal block - XTV 16



1329672

<https://www.phoenixcontact.com/us/products/1329672>

Color	gray
Flammability rating according to UL 94	V0
Insulating material group	I
Insulating material	PA
Static insulating material application in cold	-60 °C
Relative insulation material temperature index (Elec., UL 746 B)	130 °C
Fire protection for rail vehicles (DIN EN 45545-2) R22	HL 1 - HL 3
Fire protection for rail vehicles (DIN EN 45545-2) R23	HL 1 - HL 3
Fire protection for rail vehicles (DIN EN 45545-2) R24	HL 1 - HL 3
Fire protection for rail vehicles (DIN EN 45545-2) R26	HL 1 - HL 3
Surface flammability NFPA 130 (ASTM E 162)	passed
Specific optical density of smoke NFPA 130 (ASTM E 662)	passed
Smoke gas toxicity NFPA 130 (SMP 800C)	passed

Electrical tests

Surge voltage test

Test voltage setpoint	9.8 kV
Result	Test passed

Temperature-rise test

Requirement temperature-rise test	Increase in temperature \leq 45 K
Result	Test passed
Short-time withstand current 16 mm ²	1.92 kA
Result	Test passed

Power-frequency withstand voltage

Test voltage setpoint	2.2 kV
Result	Test passed

Mechanical properties

Mechanical data

Open side panel	Yes
-----------------	-----

Mechanical tests

Mechanical strength

Result	Test passed
--------	-------------

Attachment on the carrier

DIN rail/fixing support	NS 35
Result	Test passed

Test for conductor damage and slackening

Rotation speed	9 rpm
Revolutions	135
	2.5 mm ² / 0.7 kg

Feed-through terminal block - XTV 16



1329672

<https://www.phoenixcontact.com/us/products/1329672>

Conductor cross section/weight	16 mm ² / 2.9 kg
	25 mm ² / 4.5 kg
Result	Test passed

Environmental and real-life conditions

Aging

Temperature cycles	192
	192
	192
	192
	192
	192
Result	Test passed
	Test passed
	Test passed
	Test passed
	Test passed
	Test passed

Needle-flame test

Time of exposure	30 s
Result	Test passed

Oscillation/broadband noise

Specification	DIN EN 50155 (VDE 0115-200):2018-05
Spectrum	Service life test category 2, bogie-mounted
Frequency	$f_1 = 5 \text{ Hz}$ to $f_2 = 250 \text{ Hz}$
ASD level	6.12 (m/s ²) ² /Hz
Acceleration	3.12g
Test duration per axis	5 h
Test directions	X-, Y- and Z-axis
Result	Test passed

Shocks

Specification	DIN EN 50155 (VDE 0115-200):2018-05
Pulse shape	Half-sine
Acceleration	30g
Shock duration	18 ms
Number of shocks per direction	3
Test directions	X-, Y- and Z-axis (pos. and neg.)
Result	Test passed

Ambient conditions

Ambient temperature (operation)	-60 °C ... 105 °C (max. short-term operating temperature RTI Elec.)
---------------------------------	---

Feed-through terminal block - XTV 16



1329672

<https://www.phoenixcontact.com/us/products/1329672>

Ambient temperature (storage/transport)	-25 °C ... 60 °C (for a short time, not exceeding 24 h, -60 °C to +70 °C)
Ambient temperature (assembly)	-5 °C ... 70 °C
Ambient temperature (actuation)	-5 °C ... 70 °C
Permissible humidity (storage/transport)	30 % ... 70 %

Standards and regulations

Connection in acc. with standard	IEC 60947-7-1
----------------------------------	---------------

Mounting

Mounting type	NS 35/7,5
	NS 35/15

Phoenix Contact 2022 © - all rights reserved

<https://www.phoenixcontact.com>

Phoenix Contact USA
586 Fulling Mill Road
Middletown, PA 17057, United States
(+717) 944-1300
info@phoenixcon.com

Feed-through terminal block - XTV 16 BU



1329673

<https://www.phoenixcontact.com/us/products/1329673>

Please be informed that the data shown in this PDF document is generated from our Online Catalog. Please find the complete data in the user documentation. Our General Terms of Use for Downloads are valid.



Feed-through terminal block, nom. voltage: 1000 V, nominal current: 76 A, connection method: Push-X-connection, Rated cross section: 16 mm², cross section: 2.5 mm² - 25 mm², mounting type: NS 35/7,5, NS 35/15, color: blue

Your advantages

- Fast, powerless conductor connection for all conductor types with the pretensioned contact spring
- A high level of flexibility when inserting conductors enables conductors with or without ferrules to be connected easily
- Clear conductor connection with the lateral connection direction and the clear pusher position
- Easy procurement of information – the QR code on the terminal block provides all important information about the product
- Terminal blocks with Push-X connection are part of the COMPLETE line system

Commercial Data

Item number	1329673
Packing unit	1 pc
Minimum order quantity	50 pc
Sales Key	B02
Product Key	BE2511
GTIN	4063151625047
Weight per Piece (including packing)	44.02 g
Weight per Piece (excluding packing)	43.5 g
Customs tariff number	85369010
Country of origin	CN

Feed-through terminal block - XTV 16 BU



1329673

<https://www.phoenixcontact.com/us/products/1329673>

Technical Data

Product properties

Product type	Feed-through terminal block
Number of positions	1
Area of application	Railway industry
	Machine building
	Plant engineering
Number of connections	2
Number of rows	1

Insulation characteristics

Overvoltage category	III
Degree of pollution	3

Electrical properties

Maximum power dissipation for nominal condition	2.43 W
---	--------

Connection data

Number of connections per level	2
Stripping length	18 mm ... 20 mm
Internal cylindrical gage	A7
	B7
Conductor cross section solid	2.5 mm ² ... 25 mm ²
Cross section AWG	14 ... 4
Conductor cross section flexible	4 mm ² ... 25 mm ²
Conductor cross section, flexible [AWG]	12 ... 4
Flexible conductor cross section flexible (ferrule, w/o plastic sleeve)	2.5 mm ² ... 16 mm ²
Flexible conductor cross section (ferrule with plastic sleeve)	2.5 mm ² ... 16 mm ²
2 conductors with the same cross section, flexible, with TWIN ferrule with plastic sleeve	1.5 mm ² ... 10 mm ²
Nominal current	76 A
Maximum load current	85 A (with 25 mm ² conductor cross section, rigid)
Nominal voltage	1000 V
Nominal cross section	16 mm ²

Dimensions

Width	12.2 mm
Height	49.8 mm
Height NS 35/15	58.8 mm
Height NS 35/7,5	51.3 mm
Length	77.2 mm

Material specifications

Feed-through terminal block - XTV 16 BU



1329673

<https://www.phoenixcontact.com/us/products/1329673>

Color	blue
Flammability rating according to UL 94	V0
Insulating material group	I
Insulating material	PA
Static insulating material application in cold	-60 °C
Relative insulation material temperature index (Elec., UL 746 B)	130 °C
Fire protection for rail vehicles (DIN EN 45545-2) R22	HL 1 - HL 3
Fire protection for rail vehicles (DIN EN 45545-2) R23	HL 1 - HL 3
Fire protection for rail vehicles (DIN EN 45545-2) R24	HL 1 - HL 3
Fire protection for rail vehicles (DIN EN 45545-2) R26	HL 1 - HL 3
Surface flammability NFPA 130 (ASTM E 162)	passed
Specific optical density of smoke NFPA 130 (ASTM E 662)	passed
Smoke gas toxicity NFPA 130 (SMP 800C)	passed

Electrical tests

Surge voltage test

Test voltage setpoint	9.8 kV
Result	Test passed

Temperature-rise test

Requirement temperature-rise test	Increase in temperature \leq 45 K
Result	Test passed
Short-time withstand current 16 mm ²	1.92 kA
Result	Test passed

Power-frequency withstand voltage

Test voltage setpoint	2.2 kV
Result	Test passed

Mechanical properties

Mechanical data

Open side panel	Yes
-----------------	-----

Mechanical tests

Mechanical strength

Result	Test passed
--------	-------------

Attachment on the carrier

DIN rail/fixing support	NS 35
Result	Test passed

Test for conductor damage and slackening

Rotation speed	9 rpm
Revolutions	135
	2.5 mm ² / 0.7 kg

Feed-through terminal block - XTV 16 BU



1329673

<https://www.phoenixcontact.com/us/products/1329673>

Conductor cross section/weight	16 mm ² / 2.9 kg
	25 mm ² / 4.5 kg
Result	Test passed

Environmental and real-life conditions

Aging

Temperature cycles	192
	192
	192
	192
	192
	192
Result	Test passed
	Test passed
	Test passed
	Test passed
	Test passed
	Test passed

Needle-flame test

Time of exposure	30 s
Result	Test passed

Oscillation/broadband noise

Specification	DIN EN 50155 (VDE 0115-200):2018-05
Spectrum	Service life test category 2, bogie-mounted
Frequency	$f_1 = 5 \text{ Hz}$ to $f_2 = 250 \text{ Hz}$
ASD level	6.12 (m/s ²) ² /Hz
Acceleration	3.12g
Test duration per axis	5 h
Test directions	X-, Y- and Z-axis
Result	Test passed

Shocks

Specification	DIN EN 50155 (VDE 0115-200):2018-05
Pulse shape	Half-sine
Acceleration	30g
Shock duration	18 ms
Number of shocks per direction	3
Test directions	X-, Y- and Z-axis (pos. and neg.)
Result	Test passed

Ambient conditions

Ambient temperature (operation)	-60 °C ... 105 °C (max. short-term operating temperature RTI Elec.)
---------------------------------	---

Feed-through terminal block - XTV 16 BU



1329673

<https://www.phoenixcontact.com/us/products/1329673>

Ambient temperature (storage/transport)	-25 °C ... 60 °C (for a short time, not exceeding 24 h, -60 °C to +70 °C)
Ambient temperature (assembly)	-5 °C ... 70 °C
Ambient temperature (actuation)	-5 °C ... 70 °C
Permissible humidity (storage/transport)	30 % ... 70 %

Standards and regulations

Connection in acc. with standard	IEC 60947-7-1
----------------------------------	---------------

Mounting

Mounting type	NS 35/7,5
	NS 35/15

Phoenix Contact 2022 © - all rights reserved

<https://www.phoenixcontact.com>

Phoenix Contact USA
586 Fulling Mill Road
Middletown, PA 17057, United States
(+717) 944-1300
info@phoenixcon.com