



**ASCO** Power Technologies™

## ASCO Critical Power Management Appliance Overview

[ascopower.com](http://ascopower.com)

Life Is On

**Schneider**  
Electric

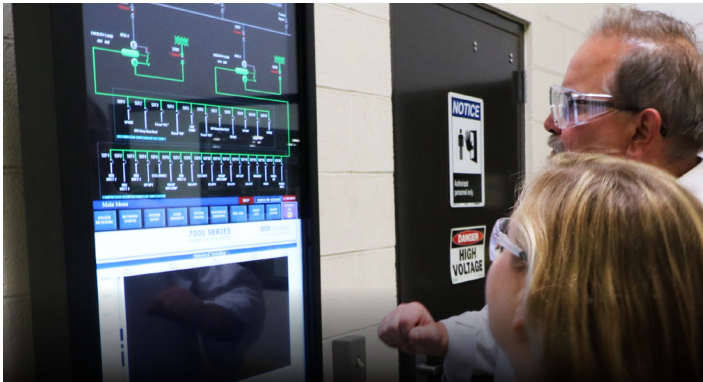
Courtesy of Steven Engineering, Inc - (800) 258-9200 - [sales@steveneng.com](mailto:sales@steveneng.com) - [www.stevenengineering.com](http://www.stevenengineering.com)



# Challenges



Learning of power issues quickly



Seeing equipment status for quick response



Evaluating prior power events



Testing systems for readiness and compliance



Operating equipment remotely

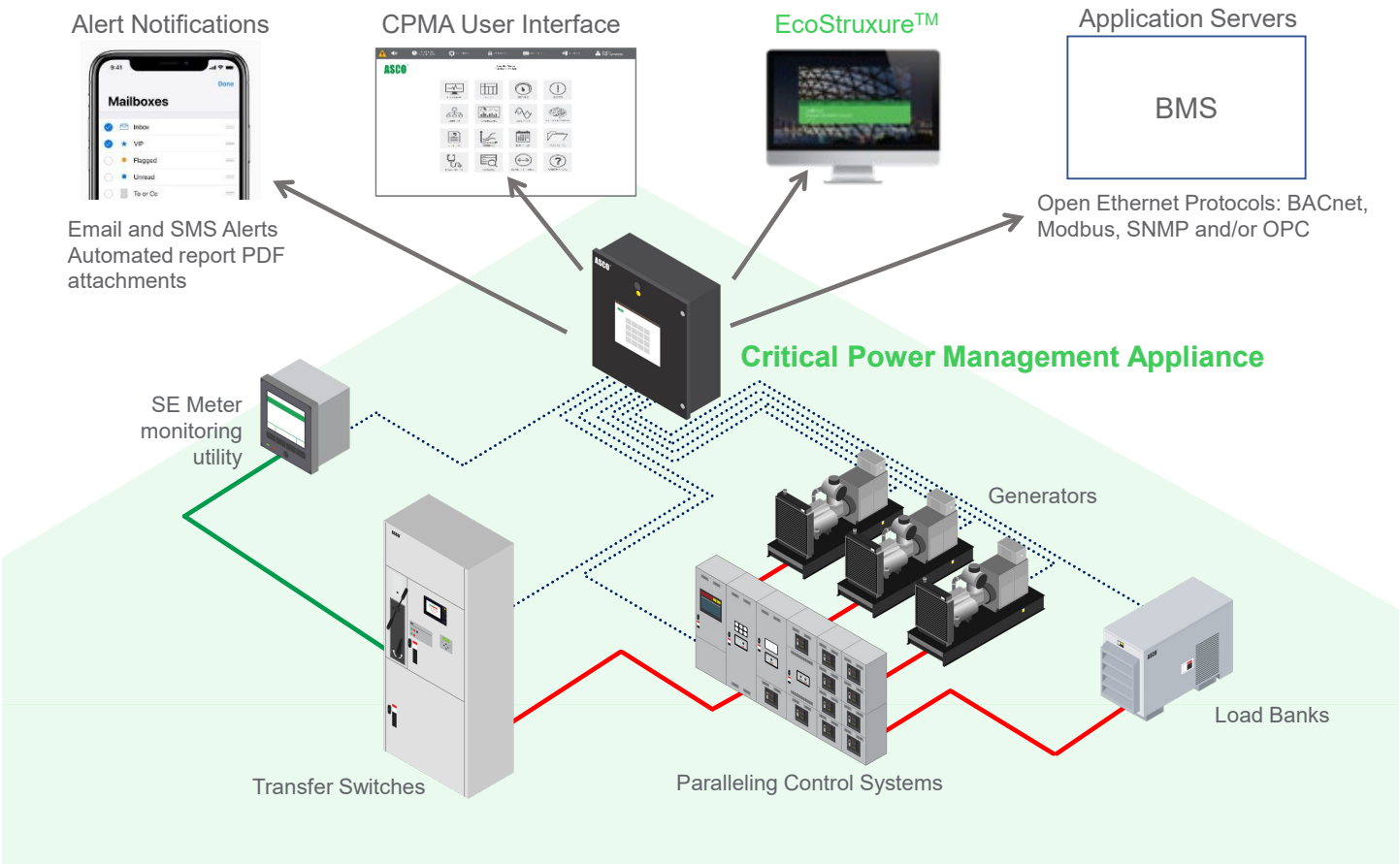


Integrating equipment from multiple manufacturers

# ASCO Solutions

ASCO Critical Power Management Appliances (CPMA) provide scalable solutions for managing engine-generators, transfer switches, paralleling switchgear, load banks, and circuit breakers. They optimize power device monitoring and control in the following ways:

- Automatically log power events and evaluate equipment performance
- Quickly notify users of power conditions and events via email and text messages
- Show real-time power equipment status and metrics through computers, tablets, smart phones, and ASCO annunciators
- Enable equipment operation for remote or off-site locations for greater safety
- Speed installation and integration with power devices from multiple manufacturers using pre-configured device maps for communicating with equipment from multiple manufacturers
- Use open protocols to integrate critical power equipment monitoring with a building management system or Schneider Electric's EcoStruxure solution



**What do these challenges have in common?**

All of them can be solved by ASCO Critical Power Management Appliances.



# ASCO Solutions

## Critical Power Equipment for a Wide Range of Applications

Healthcare

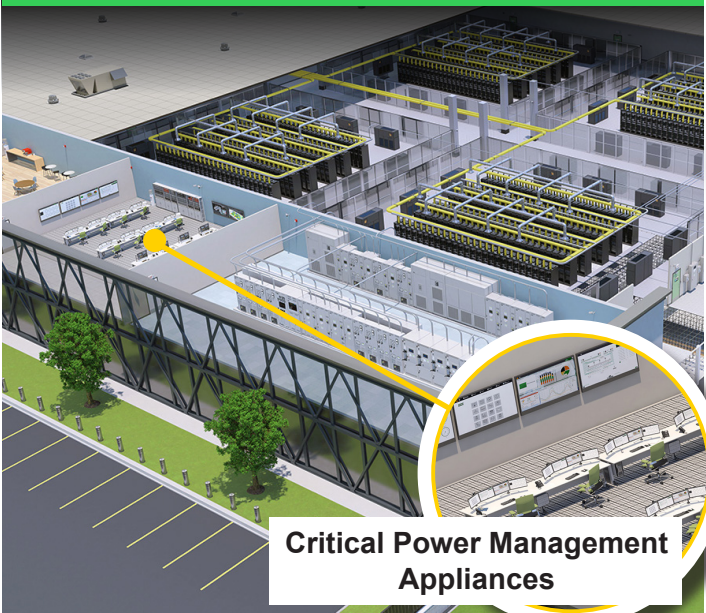
Lifesaving Care



Critical Power Management Appliances

Data Center


Maximum Uptime



Critical Power Management Appliances

Water Treatment Plant

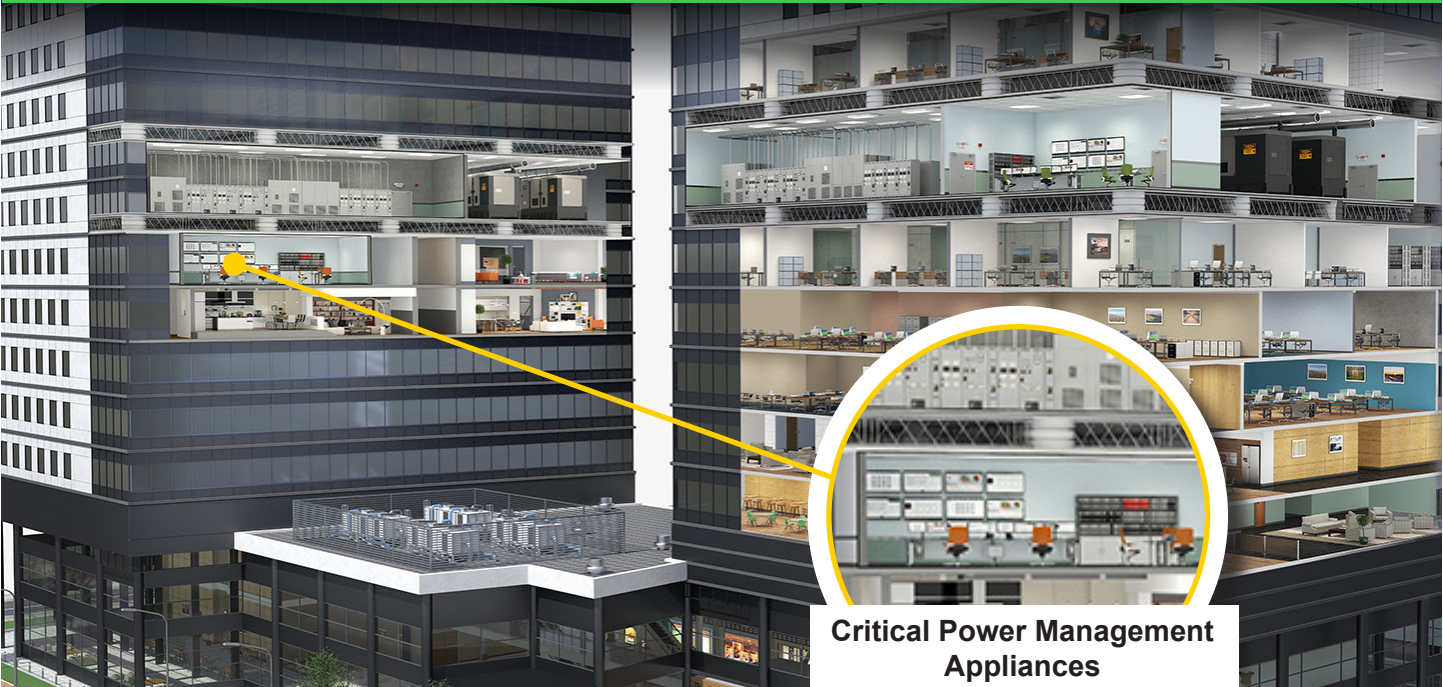
Environmental Protection



Critical Power Management Appliances

Commercial Building

Business Continuity



Critical Power Management Appliances

Residential Healthcare Facilities

Occupant Safety & Comfort



Model 5705 Annunciator

Small Business/Critical Operations

Public Service



Model 5701 Gateway



# CPMA Solutions

## Annunciators



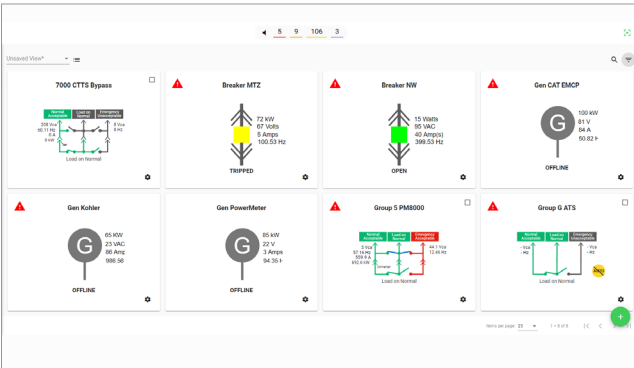
Consolidate transfer switch and generator annunciators into a single touch-screen solution with advanced reporting, logging, and notification capabilities.

## Gateways

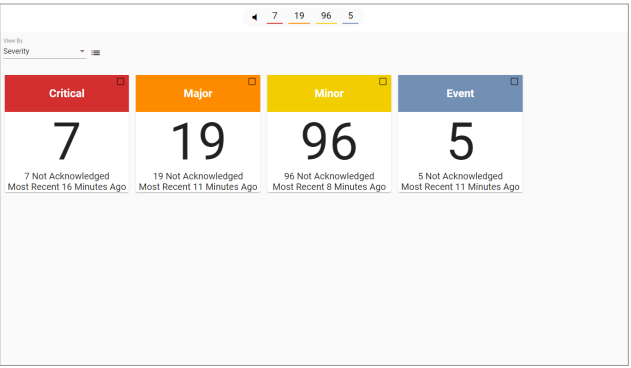


Monitors multiple transfer switches, paralleling gear, and generators. Preloaded device maps speed integration of equipment operating software with EcoStruxure™ or Building Management Systems for fast installation.

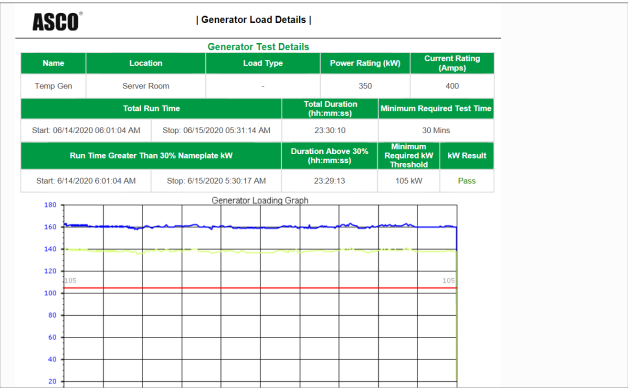
# Sample CPMA Screens



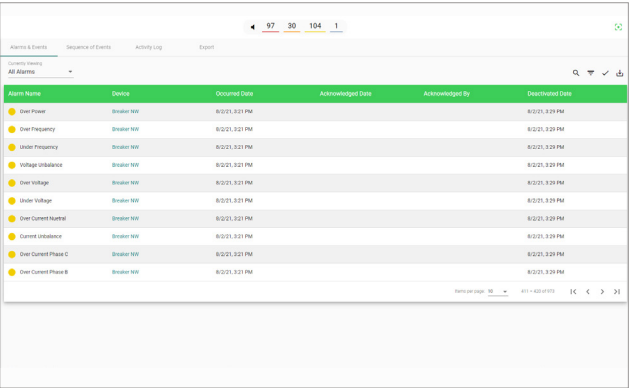
Real-Time Monitoring & System Visualization



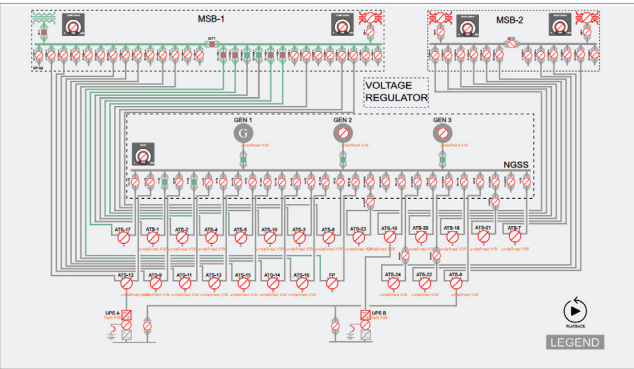
Alarming & Notification



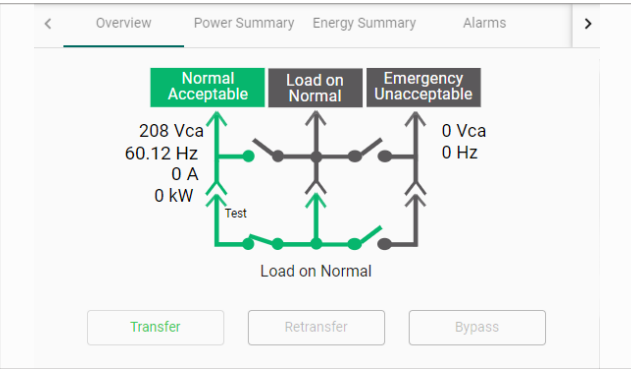
Automated Test Reports



Event Logging



One-Line Diagram with Playback



Equipment Operation

Critical Power Management platform makes it easy to see, evaluate, and respond to real-time power events and conditions.

# CPMA Gateways

## All Benefits in a Single-Device Solution

### 5701 | 8-Device Gateway



Mounts inside an ASCO Transfer Switch to monitor its operation and the status of generators, load banks, and other power devices.

### Product Details

- [5701 8-Device Gateway](#)
- [5702 Facility Gateway](#)
- [5705 8-Device Annunciator](#)

### 5702 | Facility Gateway



Enables communication between power equipment with options scaled for size and redundancy. Provides a unified interface for monitoring power equipment.

- Bridges OT and IoT
- Provides a full suite of tools to manage power usage, assess power data, and respond to real-time conditions

# CPMA Annunciators

## Monitor Critical Power Devices from Remote Locations

### 5705 | 8-Device Annunciator



Consolidates annunciators for up to 8 devices onto a single, wall-mountable, touch-screen interface

- Monitors and displays critical information from engine-generators, transfer switches, and load banks
- Provides for remote testing of power generators and transfer switches
- Works with engine-generators from every major manufacturer

*“The CPMA displays the functionality of a building’s power system better than the LED indicators we previously used. When power incidents happen, minutes matter ... there are patients on the other end of that incident.”* Patrick D, Healthcare Facility Manager

# Metering

ASCO Power Meters monitor, display, and communicate the key data needed to make key decisions about power utilization and load planning.

### 5211/5212 | Power Meter



**ASCO Model 5211** is ASCO's standard solution for providing deeper visibility into the electrical conditions within power devices.

- Integrated monitoring for Ethernet and RS485 networks
- Accepts 24VDC or 120VAC operational power

**ASCO Model 5212** is a more comprehensive solution. This unit includes the features of the 5211 and adds digital inputs and outputs for monitoring additional equipment.

### PM8000 | PowerLogic Meter



Schneider Electric’s compact, high-performance, power meter simplifies power quality monitoring and maximizes versatility.

- Reveal and understand complex power quality conditions
- Gather and act on facility-wide energy and consumption data
- Integrates easily with energy management systems

For additional information, see the [PM8000 brochure](#).

# Connectivity and Communications

ASCO Connectivity Units make it is easy to create fast, effective, linear monitoring networks.



MODEL	TYPE	CONNECTS	PRODUCT INFORMATION
5160	Remote Connectivity Unit	Up to 14 Ethernet Devices	5160 CPMA Connectivity Units Pub 2057
5161	Serial Connectivity Unit	Up to 4 RS-485 Devices	
5162	IO Connectivity Unit	Up to 60 Hardwired Devices	
5163	Hybrid Connectivity Unit	Up to 14 RS-485 or Hardwired Devices	



ASCO Power Technologies - Global Headquarters  
160 Park Avenue  
Florham Park, NJ 07932  
Tel: 800 800 ASCO

[www.ascopower.com](http://www.ascopower.com)  
[customercare@ascopower.com](mailto:customercare@ascopower.com)