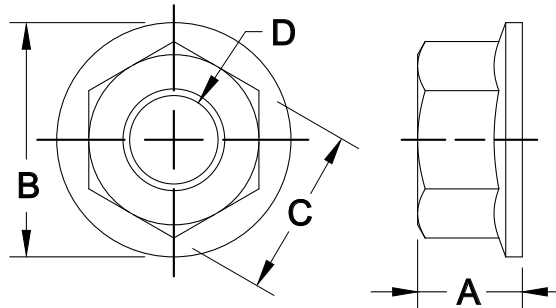


DUALVEE® FLANGE NUTS

Flange nuts are general purpose fastening hardware that is ideal for use where compact assembly heights are required. These thin height flange nuts are compatible with DualVee® SWS and SWI series eccentric studed wheels and are recommended for most applications. Physical dimensions are defined by DIN 6923. Assemble using metric socket wrench and tighten to the recommended fastening torque. Made from carbon steel with Zinc plating.

- Use to attach DualVee SWS and SWI series eccentric guide wheels
- Metal flange nut is steel with Zinc plating
- Low profile for compact space requirements
- Assemble using metric socket wrench
- Always tighten to the recommended fastening torque



Dimensions

SIZE	STOCK CODE	MATERIAL	OVERALL HEIGHT	OVERALL DIAMETER	HEX	THREAD	RECOMMENDED ASSEMBLY TORQUE
			A	B	C	D	
0	NUTHXFLM5	Carbon Steel	.197 [5.00]	Ø.465 [11.80]	8 mm	M5 X 0.8	6 lb-ft [8 N-m]
1	NUTHXFLM6	Carbon Steel	.236 [6.00]	Ø.559 [14.20]	10 mm	M6 X 1.0	8 lb-ft [11 N-m]
2	NUTHXFLM8	Carbon Steel	.315 [8.00]	Ø.705 [17.90]	13 mm	M8 X 1.25	19 lb-ft [25 N-m]
3	NUTHXFLM10	Carbon Steel	.394 [10.00]	Ø.858 [21.80]	15 mm	M10 X 1.5	30 lb-ft [41 N-m]
4	NUTHXFLM12	Carbon Steel	.472 [12.00]	Ø1.024 [26.00]	18 mm	M12 X 1.75	45 lb-ft [61 N-m]

Notes:

1. Material is carbon steel with Zinc plating.
2. RoHS compliant.

Part Number Scheme:

PREFIX	TYPE	STYLE	SIZE	MATERIAL / FINISH
NUT	HX	Blank	M#	Blank
	PT	FL		SS
				CH

Part Number Example:

NUTHXFLM8 = Nut, Hex, Flanged, M8

NUTPTM10SS = Nut, Prevailing Torque, M10, Stainless Steel

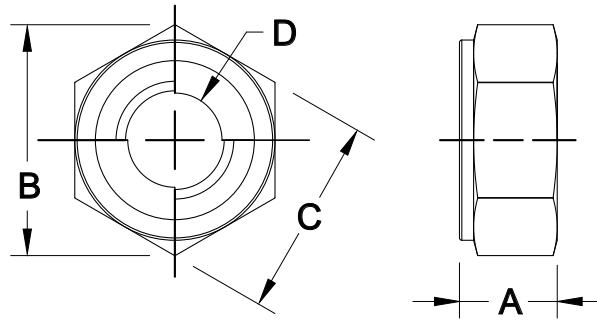
Notes:

1. Fewer than every combination is available.

DUALVEE® PREVAILING TORQUE LOCK NUTS

Prevailing torque lock nuts feature a stainless steel friction ring that makes contact with the threads on studed guide wheels to prevent loosening. These thin height lock nuts are compatible with SWS and SWI series eccentric studed wheels and are recommended for use on applications where additional eccentric preload retention is desired. The all-metal design is reusable and able to withstand high and low temperature environments and can be used where exposure to chemicals is expected. Available in either 1018 carbon steel with chromate finish, or in 304 stainless steel for enhanced corrosion resistance. Both material versions are RoHS compliant.

- Use to attach DualVee SWS and SWI series eccentric guide wheels
- All-metal prevailing torque lock nuts are reusable
- Resistance to heat, cold and chemicals
- Vibration resistant for anti-loosening performance
- Assemble using metric socket wrench



Dimensions

SIZE	STOCK CODE	MATERIAL	OVERALL HEIGHT	OVERALL WIDTH	HEX	THREAD	RECOMMENDED ASSEMBLY TORQUE
			A	B	C	D	
0	NUTPTM5CH	1018 Carbon Steel	0.1811	0.3622	8 mm	M5 X 0.8	6 lb-ft [8 N-m]
	NUTPTM5SS	304 Stainless Steel	[4.60]	[9.20]			
1	NUTPTM6CH	1018 Carbon Steel	0.2088	0.4528	10 mm	M6 X 1.0	8 lb-ft [11 N-m]
	NUTPTM6SS	304 Stainless Steel	[5.10]	[11.50]			
2	NUTPTM8CH	1018 Carbon Steel	0.2874	0.5905	13 mm	M8 X 1.25	19 lb-ft [25 N-m]
	NUTPTM8SS	304 Stainless Steel	[7.30]	[15.00]			
3	NUTPTM10CH	1018 Carbon Steel	0.3268	0.7717	17 mm	M10 X 1.5	30 lb-ft [41 N-m]
	NUTPTM10SS	304 Stainless Steel	[8.30]	[19.60]			
4	NUTPTM12CH	1018 Carbon Steel	0.4134	0.8622	19 mm	M12 X 1.75	45 lb-ft [61 N-m]
	NUTPTM12SS	304 Stainless Steel	[10.50]	[21.90]			

Notes:

1. Material of steel version is 1018 carbon steel with chromate finish.
2. Material of stainless steel version is 304 stainless steel.
3. RoHS compliant.

Contact

Phone: (925) 439-8272

Email: Sales@bwc.com



Courtesy of Steven Engineering, Inc - (800) 258-9200 - sales@steveneng.com - www.stevenengineering.com

2104 Martin Way
Pittsburg, CA 94565

UTILITRAK® WHEEL PLATE ASSEMBLIES WITH LOCK NUTS

The UtiliTrak® SW Series, PW Series, and VC Series wheel plates contain flange nuts on the eccentric wheel as standard and are suited for most applications and conditions due to their higher overall strength characteristics. Optional prevailing torque lock nuts are available for use in more challenging conditions where additional eccentric preload retention is needed. The all metal lock nuts are vibration resistant and will not fall off the threaded stud when loosened. Available as a complete assembly with lock nuts pre-installed.

PW, VC, and SW Series Wheel Plate Assemblies

- Compatible with all wheel plate sizes and versions
- Size 0, 1, 2, and 3
- 3-wheel, 4-wheel and 5-wheel versions
- Vee wheels, crown wheels, vee/crown wheels
- Not available for CR Series wheel plate assemblies

Key Features

- Additional friction retains preload adjustment
- Vibration resistant for anti-loosening performance
- All metal lock nuts made from 304 stainless steel
- Resistant to heat, cold and chemicals



Vee Wheels & Crown Wheels



Vee/Crown Wheels



Polymer Wheels

Part Number Scheme:

PREFIX	SERIES	SIZE	WHEELS	ASSEMBLY	PROTECTION	PROFILE	# OF WHEELS
UT	Blank	0	Blank	Blank	Blank	Blank	Blank
	VC	1	X	WPA	X	R	4
	CCA	2	SS	WPLA	P	S	4A
		3	SSX				5
			227				5A
			SS227				
			SS300				

Part Number Example:

UT1WPLAXR-5A = SW Series, Size 1, Carbon Steel, Lock Nuts, Sealed, Crown Roller, 5 Wheels

UTVC3XWPLA4 = VC Series, Size 3, Carbon Steel, Lock Nuts, Sealed, 90-Degree, 4 Wheels

Notes:

1. WPLA specifies assembly with lock nut option.
2. Fewer than every combination is available.
3. Lock nut option is not available for the CR Series wheel plate assemblies because a thinner jam nut is used.

Need Ordering Assistance? Contact BWC Technical Sales at 1 (925) 439-8272

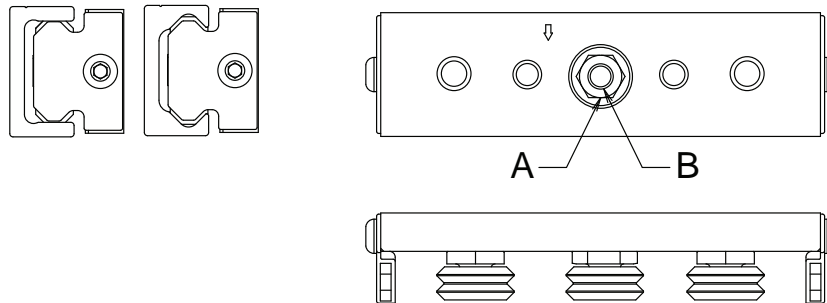


*UtiliTrak Wheel Plate
With Prevailing Torque
Lock Nut*

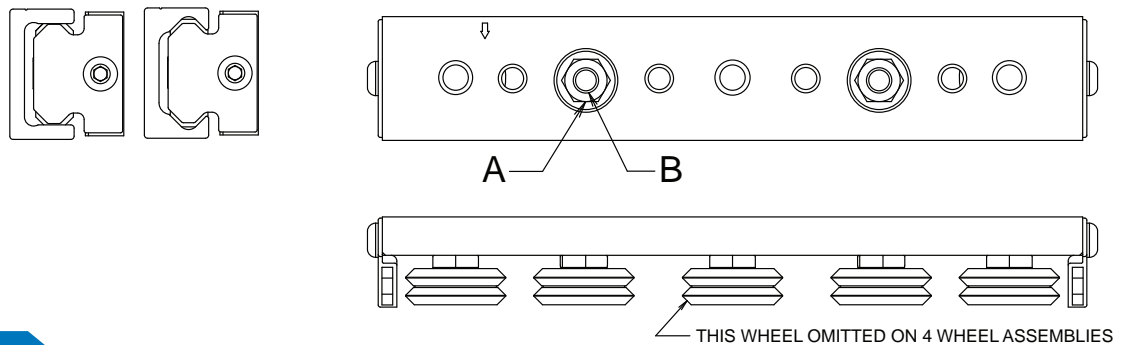
UTILITRAK® WHEEL PLATE ASSEMBLIES

The hex feature of the lock nut option is larger than the standard flange nut on the size 3 versions and requires a larger socket wrench to assemble and adjust the eccentric wheel offset. The wheel plate counter bore diameters on older wheel plates are too small to accept the size 3 socket wrench and are therefore not backwards compatible with lock nut upgrades. New revision wheel plates are recommended.

Wheel Plates with 3 Guide Wheels



Wheel Plates with 4 or 5 Guide Wheels



Dimensions					
SIZE	ECCENTRIC NUT	MATERIAL	NUT HEX	NUT THREAD	RECOMMENDED ASSEMBLY TORQUE
			A	B	
0	Flange Nut	Carbon Steel with Chromate Finish	8 mm	M5 X 0.8	6 lb-ft [8 N-m]
	Lock Nut	304 Stainless Steel			
1	Flange Nut	Carbon Steel with Chromate Finish	10 mm	M6 X 1.0	8 lb-ft [11 N-m]
	Lock Nut	304 Stainless Steel			
2	Flange Nut	Carbon Steel with Chromate Finish	13 mm	M8 X 1.25	19 lb-ft [25 N-m]
	Lock Nut	304 Stainless Steel			
3	Flange Nut	Carbon Steel with Chromate Finish	15 mm	M10 X 1.5	30 lb-ft [41 N-m]
	Lock Nut	304 Stainless Steel	17 mm		

Notes:

1. All nuts are RoHS compliant.

Contact

LOPRO® BASIC WHEEL PLATE ASSEMBLIES WITH LOCK NUTS

The LoPro linear actuator product line includes complete actuator assemblies and sub-assemblies. Wheel plates contain flange nuts on the eccentric guide wheels as standard and are suited for most applications and conditions due to their higher overall strength characteristics. Optional prevailing torque lock nuts are available for use in more challenging conditions where additional eccentric preload retention is needed. The all metal lock nuts are vibration resistant and will not fall off the threaded stud when loosened. Available as a wheel plate assembly with lock nuts pre-installed on an actuator.



LoPro Basic Wheel Plate Assembly

Assemblies with Lock Nuts

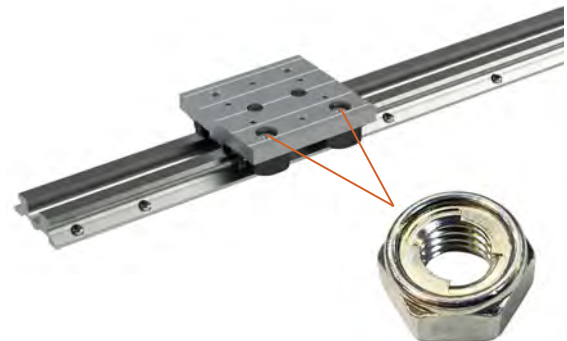
- Compatible with the basic wheel plate versions
- All actuator sizes including 1, 2, 3 and 4
- Belt, chain, lead screw and ball screw drive versions
- All wheel versions including polymer, steel and stainless
- Not available for the wiper wheel plate assemblies



LoPro Actuator with Basic Wheel Plate

Key Features

- Additional friction retains preload adjustment
- Vibration resistant for anti-loosening performance
- All metal lock nuts made from 304 stainless steel
- Resistant to heat, cold and chemicals
- Reusable for repeated eccentric adjustment



LoPro Undriven With Prevailing Torque Lock Nuts

Part Number Scheme:

PREFIX	DRIVE	SIZE	MATERIAL	CARRIAGE	WHEEL	OPTION	DRIVE	BEAM	VERSION	TRAVEL
LP	B	1Z	C	W	C	Z	A, B, C	U	A	0.1mm Increments
	C	2Z	S	C	S	R	D, E, F	A	B	
	L	2S		D	H	L	G, L, R	S		
	S	2L		L	L	Y		D		
	U	3Z		M	W					
		4Z			V					

Part Number Example:

LPB3ZSMHZLAB 250.0 = Actuator, Belt Drive, Size 3, Stainless, Basic Wheel Plate w/ Lubricators and Lock Nuts, Stainless SS227 Wheels, No Sensor Flags, Left Hand Output Shaft, Aluminum Beam, Version B, 250.0mm Travel Length

Notes:

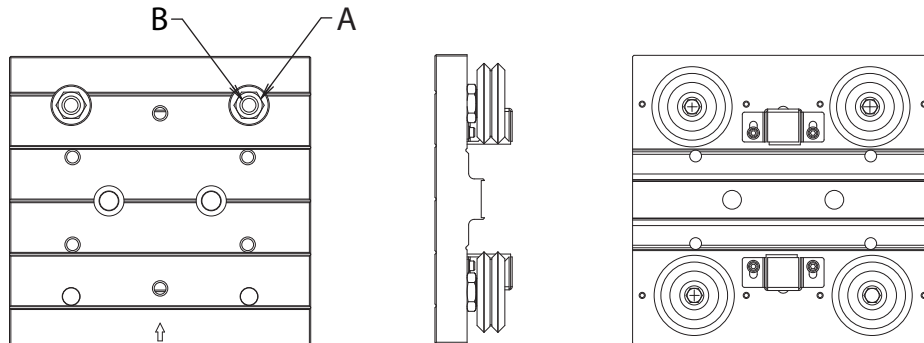
1. Carriage type D is for basic wheel plate w/ wheel covers and lock nuts.
2. Carriage type M is for basic wheel plate w/ lubricators and lock nuts.
3. Fewer than every combination is available.
3. Lock nut option is not available for wiper wheel plate versions.

Need Ordering Assistance? Contact BWC Technical Sales at 1 (925) 439-8272

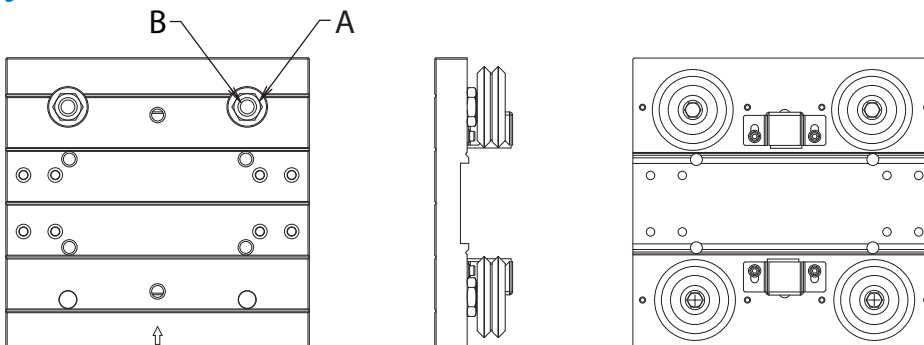
LOPRO® WHEEL PLATE ASSEMBLIES

The hex feature of the lock nut option is larger than the standard flange nut on the size 3 versions and requires a larger socket wrench to assemble and adjust the eccentric wheel offset. The wheel plate counter bore diameters on older wheel plates are too small to accept the size 3 socket wrench and are therefore not backwards compatible with lock nut upgrades. New revision wheel plates are recommended.

Wheel Plates for Belt/Chain Drive



Wheel Plates for Lead Screw/Ball Screw Drive



Dimensions

SIZE	ECCENTRIC NUT	MATERIAL	NUT HEX	NUT THREAD	RECOMMENDED ASSEMBLY TORQUE
			A	B	
1	Flange Nut	Carbon Steel with Chromate Finish	10 mm	M6 X 1.0	8 lb-ft [11 N-m]
	Lock Nut	304 Stainless Steel			
2	Flange Nut	Carbon Steel with Chromate Finish	13 mm	M8 X 1.25	19 lb-ft [25 N-m]
	Lock Nut	304 Stainless Steel			
3	Flange Nut	Carbon Steel with Chromate Finish	15 mm	M10 X 1.5	30 lb-ft [41 N-m]
	Lock Nut	304 Stainless Steel	17 mm		
4	Flange Nut	Carbon Steel with Chromate Finish	18 mm	M12 X 1.75	45 lb-ft [61 N-m]
	Lock Nut	304 Stainless Steel	19 mm		

Part Number Example:

BWP3XSWSTLBCL = Basic Wheel Plate, W3X Carbon Steel Wheels, SWS Series Studs, Track Lubricators, Belt/Chain, w/ Lock Nuts

Notes:

1. All nuts are RoHS compliant.
2. All part numbers for wheel plate versions with lock nuts have an "L" character at the end.

BISHOP
WISECARVER
Expertly Designed, Delivered to Perform

Courtesy of Steven Engineering, Inc - (800) 258-9200 - sales@steveneng.com - www.stevenengineering.com

Contact

Phone: (925) 439-8272

Email: Sales@bwc.com

2104 Martin Way
Pittsburg, CA 94565

MINVEE® WHEEL PLATE ASSEMBLIES WITH LOCK NUTS

The MinVee® wheel plate assemblies contain flange nuts on the concentric and eccentric guide wheels as standard and are suited for most applications and conditions due to their higher overall strength characteristics. Optional prevailing torque lock nuts are available for use in more challenging conditions where additional eccentric preload retention is needed. The all metal lock nuts are vibration resistant and will not fall off the threaded stud when loosened. Available as a complete assembly with lock nuts pre-installed.

Key Features

- Additional friction retains preload adjustment
- Vibration resistant for anti-loosening performance
- All metal lock nuts made from 304 stainless steel
- Resistant to heat, cold and chemicals
- Reusable for repeated eccentric adjustment
- Assemble and adjust using metric socket wrench



*MinVee Wheel Plate
On Double Edge Track*

Dimensions

SIZE	ECCENTRIC NUT	MATERIAL	NUT HEX	NUT THREAD	RECOMMENDED ASSEMBLY TORQUE
0	Flange Nut	Carbon Steel with Chromate Finish	8 mm	M5 X 0.8	6 lb-ft [8 N-m]
	Lock Nut	304 Stainless Steel			

Notes:

1. All nuts are RoHS compliant.

Part Number Scheme:

PREFIX	SIZE	ASSEMBLY	WHEELS & PROTECTION
MV	0	WPA	Blank (Carbon, Shielded)
		WPLA	X (Carbon, Sealed)
			P (Polymer)
			SS227 (Stainless)

Part Number Example:

MV0WPAX = MinVee, Size 0, Flange Nuts, Carbon Steel, Sealed
MV0WPLA-SS227 = MinVee, Size 0, Lock Nuts, Stainless Steel SS227 Wheels

Notes:

1. WPLA specifies assembly with lock nut option.



*MinVee Wheel Plate With
Prevailing Torque
Lock Nuts*

Contact

Phone: **(925) 439-8272**
Email: **Sales@bwc.com**

Need Ordering Assistance? Contact BWC Technical Sales at 1 (925) 439-8272

2104 Martin Way
Pittsburg, CA 94565